

CENTERPOINT ENERGY TELEPHONE NUMBERS	3
1 INTRODUCTION	4
1.1 APPLICABILITY	4
1.2 PURPOSE.....	4
1.3 COPIES OF THIS PROCEDURE.....	4
1.4 FACILITY OWNERSHIP OR NAME CHANGE.....	4
1.5 PROCEDURE CONFLICTS.....	4
1.6 MAINTENANCE RESPONSIBILITY	4
1.7 EQUIPMENT CHANGES	4
1.8 GENERATION INSTALLATION AND OPERATION	5
1.9 POWER FACTOR.....	5
1.10 VOLTAGE FLUCTUATIONS	5
1.11 EMERGENCY RESPONSE	5
2 CNP ACCESS TO THE CUSTOMER'S FACILITIES	5
2.1 AUTHORIZED REPRESENTATIVE OF CNP	5
3 COMMUNICATIONS WITH CNP	6
3.1 REAL TIME OPERATIONS DEPARTMENT	6
3.2 SCHEDULING TRANSMISSION EQUIPMENT OUTAGES	6
3.3 TRANSMISSION ACCOUNTS DIVISION	7
3.4 SUBSTATION AND EQUIPMENT IDENTIFICATION	7
3.5 TELEPHONE LINES AND DATA COMMUNICATION	8
3.6 ALARM RESPONSE.....	8
4 SWITCHING, CLEARANCES, GROUNDING	10
4.1 BILLABLE COSTS	10
4.2 SWITCHING	10
4.3 CLEARANCES	11
4.4 GROUNDING.....	11
4.5 SWITCHING 345 kV FACILITIES EQUIPPED WITH FERRORESONANCE PROTECTION..	12
4.6 TERMINOLOGY FOR SWITCHING ORDERS.....	12
4.7 SWITCHING ORDER	14
4.8 TRANSMISSION SWITCHING CHECK LIST.....	15
5 OUTAGE SCHEDULING CHECK LIST	16
5.1 OUTAGE SCHEDULING CHECK LIST	16
6 UNPLANNED OUTAGES.....	17
6.1 UNPLANNED OUTAGES	17
6.2 UNPLANNED OUTAGES OF 345 kV FACILITIES EQUIPPED WITH FERRORESONANCE PROTECTION.....	17
6.3 EMERGENCY SWITCHING	18
6.4 EMERGENCY SWITCHING CHECK LIST	19

6.5	OTHER EMERGENCY CONDITIONS	19
7	GENERATION OPERATION	19
7.1	APPLICABILITY	19
7.2	UNIT OPERATION.....	19
8	PROTECTIVE RELAYING AND CONTROL.....	20
8.1	SETTINGS FOR RELAYS INSTALLED FOR THE PROTECTION AND AUTOMATIC RECLOSING OF CNP TRANSMISSION LINES.....	20
8.2	APPLICABLE RELAY SETTINGS.....	20
8.3	COMMUNICATIONS CONNECTIONS TO ELECTRONIC DEVICES	20
9	EQUIPMENT ADDITIONS, REPLACEMENT, UPGRADES AND REMOVAL	21
9.1	EQUIPMENT CHANGES	21
9.2	MODIFICATION, REPAIR, AND REPLACEMENT OF CUSTOMER EQUIPMENT	21
10	EQUIPMENT MAINTENANCE	23
10.1	CNP MAINTENANCE.....	23
10.2	CUSTOMER MAINTENANCE	23
10.3	MONTHLY INSPECTIONS	23
10.4	QUARTERLY, SEMI-ANNUAL TESTING, AND INSPECTION	24
10.5	DC BATTERY SYSTEM	24
10.6	FUNCTIONAL TESTING.....	24
10.7	SPECIAL INSPECTION AND TESTING	24
11	PLANT DESIGN CONSIDERATIONS.....	25
11.1	EMERGENCY SYSTEMS	25
11.2	AUTOMATIC RECLOSING	25
11.3	SYSTEM VOLTAGE.....	25
11.4	ELECTRICAL PROTECTION COORDINATION STUDIES.....	25
11.5	SUBSTATION DESIGN SPECIFICATIONS	26



CenterPoint Energy Telephone Numbers

Real Time Operations Department ("RTO")

RTO System Controller	281-894-0491 (24 hours)
RTO HOTLINE (Emergency)	281-894-1625 (24 hours)

Outage Scheduling:

Submit request to: OutageRequest@centerpointenergy.com

Outage Questions call 713/207-2714 (Primary) or 713-207-2196

Metering Department:

High Voltage Metering	713-945-6689
Metering Engineering	713-207-7507

Transmission Accounts Representatives:

Gary Dwyer	713-207-3621
Arodi Gonzalez	713-207-3512
Joe (Cliff) Teaster	713-207-2263
Gary Shadwell	713-207-3538

1 Introduction

1.1 Applicability

- 1.1.1 This procedure applies to entities ("the Customers") who own high voltage transmission and/or generation facilities interconnected to CenterPoint Energy Houston Electric, LLC's ("CNP") 69 kV, 138 kV, or 345 kV transmission system. Customer, as used in this document, includes the Customer's authorized contractors or agents. The Customer shall ensure that the provisions in this document are applied to facilities that may be owned by others and that are interconnected to the Customer's facility at the same voltage at which the Customer's facility is interconnected to CNP's transmission system.

1.2 Purpose

- 1.2.1 The purpose of this document is to facilitate the coordinated operation, outage coordination, maintenance, design, and modification of the Customer's high voltage transmission or generation facilities with CNP facilities.

1.3 Copies of This Procedure

- 1.3.1 The Customer shall keep copies of this procedure in applicable Customer substation control houses and plant operating centers. This procedure, including forms, may be reproduced.

1.4 Facility Ownership or Name Change

- 1.4.1 The Customer shall inform CNP of any change in ownership or name of their interconnected facilities or facilities owned by others that are interconnected to their facilities.

1.5 Procedure Conflicts

- 1.5.1 Any conflicts between this procedure and the Customer's procedures shall be thoroughly discussed with appropriate CNP representatives and resolved before beginning any work.

1.6 Maintenance Responsibility

- 1.6.1 The Customer is responsible for the operation and periodic preventive maintenance of all substation facilities owned by the Customer except for equipment designated by CNP to be maintained by CNP. The Customer shall not perform preventive maintenance on equipment maintained by CNP.

1.7 Equipment Changes

- 1.7.1 The Customer shall provide all equipment, in accordance with CNP specifications, whenever changes in CNP transmission system, including monitoring and protection devices, require changes in the Customer's interconnected facilities to maintain compatibility.

- 1.7.2 The Customer shall provide sufficient notice to CNP of any proposed changes to their facilities as specified in Section 9. This notification shall include providing necessary details, so that CNP can provide comments based upon a general, functional review. The Customer shall not procure any equipment or materials or begin any work until all CNP comments are incorporated or resolved.

1.8 Generation Installation and Operation

- 1.8.1 Customers desiring to connect generation that will operate in parallel to CNP's transmission system shall file an application with the Electric Reliability Council of Texas ("ERCOT") requesting interconnection in accordance with ERCOT's Generation Interconnection Procedure.

- 1.8.2 The Customer's generation facility must be operated in accordance with the ERCOT Protocols and Operating Guides available at:

<http://www.ercot.com/mktrules/nprotocols/current>

<http://www.ercot.com/mktrules/guides/noperating/cur>

1.9 Power Factor

- 1.9.1 The Customer shall provide suitable apparatus to maintain power factor consistent with the requirements of CNP's Tariff for Retail Delivery Service.

1.10 Voltage Fluctuations

- 1.10.1 The Customer shall provide suitable apparatus to mitigate voltage fluctuations to reasonable limits should the Customer's equipment cause voltage fluctuations that interfere with CNP's transmission system.

1.11 Emergency Response

- 1.11.1 In an emergency, the Customer shall switch substation equipment, reduce MW output, change reactive output, or perform other measures as directed by ERCOT or CNP's Real Time Operations Department ("RTO"), to help alleviate the emergency.
- 1.11.2 CNP may interrupt transmission service to and deliveries from the Customer in the event of an emergency.

2 CNP Access to the Customer's Facilities

2.1 Authorized Representative of CNP

- 2.1.1 An authorized representative of CNP shall have access to the Customer's premises for the purpose of inspecting CNP's wiring and apparatus, repairing, erecting, removing, or replacing CNP owned equipment, reading CNP meters, and for all other purposes related to the interconnection including switching CNP equipment. The Customer shall provide necessary equipment outages to

allow CNP to perform periodic maintenance on equipment that CNP owns or to repair or replace equipment that CNP owns.

3 Communications with CNP

3.1 Real Time Operations Department

3.1.1 RTO operates CNP's transmission system and coordinates the operation of interconnected high voltage facilities. RTO provides routine and emergency switching instructions, issues clearances, and dispatches CNP personnel in response to electrical outages and problems. The Customer shall schedule planned outages with RTO and obtain from RTO switching instructions for any equipment at the Customer's substation that is directly interconnected with CNP's transmission system. Switching in the Customer's facilities that are remote to the Customer's substation directly interconnected with CNP's transmission system does not need to be scheduled. CNP will notify the Customer one or more days in advance if switching is required in the Customer's substation for planned transmission line outages or if the Customer's substation will be placed in a single-ended condition.

3.2 Scheduling Transmission Equipment Outages

- 3.2.1 CNP's substation equipment outage scheduling and reporting requirements have been developed to support ERCOT requirements for scheduling outages on circuit breakers, bus sections, transmission lines, and transformers that have an operating voltage of 60 kV and higher and to support requirements for scheduling outages of ERCOT Polled-Settlement ("EPS") metering equipment.
- 3.2.2 The Customer shall contact the RTO Outage Scheduler as shown in Table 1 at the end of this section to coordinate outages in the substation that is directly interconnected with CNP's transmission system. Requests are considered in the order they are received.
- 3.2.3 Switching Orders, Clearances - The Customer shall follow switching instructions provided by the RTO System Controller prior to initiating any switching to remove equipment from service or return equipment to service in the Customer's facilities. The Customer shall request a clearance from the RTO System Controller when required. A "Switching Order" form and a "Transmission Switching Check List" form are included in this document. The RTO System Controller can be contacted at 281-894-0491.
- 3.2.4 Unplanned Outages, Emergencies - The Customer shall contact the RTO System Controller as soon as possible whenever any unplanned tripping of any circuit breaker operating at a voltage of 60 kV and higher occurs. An "Unplanned Outage Check List" form is included in this document. In the event of an unplanned generation outage, the Customer or his designated representative shall advise CNP's RTO System Controller as soon as possible. In emergency situations, switching may be performed by a qualified person, which is authorized by the Customer, based upon switching instructions

provided by the RTO System Controller. An "Emergency Switching Check List" form is included in this document. The RTO System Controller can be contacted at 281-894-0491 or at the RTO HOTLINE 281-894-1625.

3.2.5 ERCOT Approvals - The RTO System Scheduler will coordinate a review and notifies the Customer whether the outage can be scheduled for the desired day. Transmission line outages and the energization of new equipment require the approval of ERCOT. The Customer shall notify the RTO System Scheduler as soon as possible if an outage is canceled prior to the outage date. The Customer shall immediately notify the RTO System Controller if an outage is canceled on the day of the outage. CNP endeavors to notify the Customer as soon as possible when it is deemed necessary to cancel an outage.

3.2.6 Customer Substation Evacuations – During emergencies requiring evacuation of the Customer's facility, the Customer shall contact RTO prior to the evacuation and provide information regarding the operational status of their substation and associated support facilities, such as substation station service power, battery and battery charger, and ability for CNP to access the substation. The Customer's substation is an integral part of the interconnected transmission system and disabling them has an impact on the electrical grid.

3.3 Transmission Accounts Division

3.3.1 CNP's Transmission Accounts Division is responsible for coordinating the Customer's service needs within CNP. Transmission Accounts representatives endeavor to inform the Customer of long range planned switching and projects that may affect the Customer's facility.

3.3.2 The Customer shall notify the Transmission Accounts representative as specified in Section 9 when equipment additions or removals are planned or when high voltage equipment 60 kV and higher or associated equipment requires modification or replacement. The Customer shall contact a Transmission Accounts representative to request current CNP specifications and applicable bills of material for substation equipment additions and replacement.

3.3.3 Transmission Accounts representatives may be contacted for any questions concerning the operation of the Customer's substation. The Transmission Accounts representatives are listed on Page 1 of this document.

3.4 Substation and Equipment Identification

3.4.1 CNP assigns a substation name, or a Substation ID of six characters or less, to identify the Customer's substation facility. The Substation ID is also referred to as the six character mnemonic name in which some characters may be blank. CNP mounts signs with the substation name or the Substation ID on a substation control house door and on a substation entrance gate at the Customer's facility.

- 3.4.2 The Customer's high voltage circuit breakers switches, transformers, and certain low side equipment shall be identified with CNP's assigned numbers. CNP develops a substation basic one-line diagram that includes these assigned numbers. CNP or the Customer shall mark these numbers on the substation equipment. CNP may stencil identification numbers on substation equipment and mount signs, labels, drawings, telephone numbers, and instructions on the Customer's facilities.
 - 3.4.3 The Customer shall use CNP's assigned substation name, or Substation ID, and equipment identification numbers in discussions with the RTO System Controller and the RTO System Scheduler.
- 3.5 Telephone Lines and Data Communication
- 3.5.1 The Customer shall maintain a telephone in the substation control house connected to an outside telephone line that is independent from the Customer's telephone system.
 - 3.5.2 The Customer shall maintain data acquisition equipment to provide real-time data to RTO when it has been installed at electric generating facilities.
 - 3.5.3 CNP maintains a communication circuit for real time data if CNP Supervisory Control and Data Acquisition ("SCADA") equipment is installed at the Customer's facility.
- 3.6 Alarm Response
- 3.6.1 CNP responds to alarms for communication equipment installed to protect CNP transmission circuits.
 - 3.6.2 The Customer shall report substation alarms to the RTO System Controller and respond to alarms pertaining to their equipment. A "Loss of DC" alarm shall be immediately reported to the RTO System Controller and investigated by the customer.

Outage Scheduling Requirements

Per ERCOT and CNP outage reporting requirements: planned outages on circuit breakers, transmission lines, and autotransformers that are rated 60 kV and higher must be submitted to the ERCOT Outage Coordinator by the CNP RTO Outage Coordinator.

Per ERCOT Protocols, planned outages on ERCOT Polled Settlement ("EPS") meters and the equipment to which they are connected require a 5 day minimum notice. A 10 calendar-day minimum notice is required for any modifications to approved EPS equipment.

Table 1 Planned Outage Scheduling

Equipment Being Requested	Minimum Advance Notice	Contact
69 kV and 138 kV lines, single load transformers, individual breakers and bus outages of no more than one day in duration.	No later than 1200 hours Wednesday two weeks before the Planned Outage is to take place.	Outage Scheduler @ 713-207-2196 or 713-207-2714
All transmission line outages and equipment outages, including busses, of up to four contiguous days duration (daily or continuous outages).	35 Calendar Days	Outage Scheduler @ 713-207-2196 or 713-207-2714
Any transmission line outages and/or equipment outages, including busses, of 5 days or longer duration (daily or continuous)	90 Calendar Days	Outage Scheduler @ 713-207-2196 or 713-207-2714

Amount of time between the request for approval of the proposed Outage and the scheduled start date of the proposed Outage:	ERCOT shall approve or reject no later than:
Three days	1800 hours, two days before the start of the proposed Outage
Between four and eight days	1800 hours, three days before the start of the proposed Outage
Between nine days and 45 days	Four days before the start of the proposed Outage
Between 46 and 90 days	30 days before the start of the proposed Outage
Greater than 90 days	75 days before the start of the proposed Outage

4 Switching, Clearances, Grounding

4.1 Billable Costs

4.1.1 Grounding and switching requested by the Customer to be performed during other than normal working hours is billable to the Customer.

4.1.2 Grounding and switching charges will be waived under the following conditions:

4.1.2.1 The Customer requesting switching or grounding activities by CNP is a transmission voltage service customer that is interconnected to CNP's transmission system through a customer-owned substation; and

4.1.2.2 The requested activities are to allow the Customer to perform maintenance activities or equipment upgrades on its transmission voltage facilities within the Customer's substation; and

4.1.2.3 The switching and grounding field activities are requested to occur on a normal CNP work day, with outages commencing no earlier than 0800, and outages concluding no later than 1600.

4.1.3 Outages extending beyond the timeframes identified in Section 4.1.2.3 on a forced basis may result in billing for associated switching and grounding activities, as determined on a case-by-case basis.

4.1.4 Outages with switching or grounding activities requested for more than two consecutive days may be subject to charges for each additional consecutive day, even if the outages occur within the timeframes identified in Section 4.1.2.3, unless early or intermittent outage restoration is required by ERCOT or for CNP system requirements.

4.1.5 Questions regarding charges should be directed to the Transmission Accounts representative.

4.2 Switching

4.2.1 CNP performs necessary switching at the remote end of a CNP transmission line for outages at the Customer's substation that require switching of CNP transmission lines. CNP provides switching instructions for the high voltage devices in the Customer's substation that is directly interconnected with CNP's transmission system. Switching instructions are not provided for remote facilities interconnected to the Customer's substation that is directly interconnected with CNP's transmission system. A "Switching Order" form and a "Transmission Switching Check List" form are included in this document.

4.2.2 The Customer shall follow switching instructions provided by the RTO System Controller prior to initiating any switching to remove equipment from service or return equipment to service in the Customer's facilities. The Customer shall implement specific procedures for the switching of its facilities. These procedures shall include a visual check that all phases have fully opened or

closed. A device bearing a Hold Tag shall not be operated under any circumstances.

- 4.2.3 The Customer shall provide a Hold Order to RTO for switching at generation facilities for equipment that interconnects with CNP.

4.3 Clearances

- 4.3.1 A clearance is required for applicable work on high voltage apparatus connected to CNP transmission lines when switching at the remote end of a CNP transmission line is necessary. Clearances are also issued when the Customer and CNP will be working on apparatus within the same isolated area at the Customer's facilities. Each party will be issued an individual clearance.
- 4.3.2 The Customer shall request a clearance from the RTO System Controller when required. Personnel authorized by CNP will perform either "trip & hold" or "check for trip & hold" on necessary devices before a clearance will be issued.
- 4.3.3 A clearance cannot be released by anyone other than the person to whom it was issued unless uncontrollable circumstances make that impossible. In this situation, the person's supervisor may, after informing each member of the crew that such action is being taken, contact the RTO System Controller to release the clearance. For field personnel shift changes, the person assuming the leadership of the work will be issued a new clearance and the person to whom the clearance was originally issued will then release the clearance.

4.4 Grounding

- 4.4.1 CNP issues clearances indicating that high voltage devices have been opened, locked, and tagged to prevent the devices from operating. The Customer shall verify that the apparatus is de-energized before protective grounding is attached or work on high voltage facilities begins.
- 4.4.2 The Customer shall install protective grounds on all de-energized electrical apparatus before applicable work is performed on it. When more than one party (e.g., the Customer and CNP) will be working on apparatus within the same isolated area at the Customer's facilities, each party shall install their own individual grounds before applicable work is performed.
- 4.4.3 Work may be performed on the control circuits and mechanisms of a device without grounding the apparatus, if such work can be performed without risk of contact with primary voltages. Grounds may be temporarily removed if required by testing procedures.
- 4.4.4 Before a grounding device is attached to any conductor, the conductor shall first be tested to confirm that it is de-energized. Grounds shall be placed such that the operation of a switching device cannot remove their protection.
- 4.4.5 The clamps and conductors of grounding devices shall be designed for the available fault current. Grounding devices must be inspected for broken

strands and loose connections. The surface of the ground clamps shall be clean of corrosion and oxides.

4.4.6 Grounding devices for transmission voltage conductors shall be installed and removed with the use of applicable live line tools. Grounding devices shall be securely connected at the ground end before connection is made to the conductor. Grounds shall be removed by first detaching the connection at the conductor and, then, detaching the connection at the ground end. When grounding to a steel structure, the ground shall not be applied to a flat surface unless an appropriate flat surface clamp is used.

4.4.7 CNP does not ground Customer-owned substation equipment except for work being performed by CNP.

4.5 Switching 345 kV Facilities Equipped with Ferroresonance Protection

4.5.1 Ferroresonance protection is installed whenever a wound potential transformer ("PT") is connected to 345 kV and the possibility of a ferroresonance condition occurring exists. If applicable, the Customer shall implement specific procedures for switching 345 kV equipment that has ferroresonance protection installed. Procedures shall include the following:

- Place the sync handle in position for the last breaker that will be opened.
- Monitor the potential lights on all three phases before and after the last breaker is opened. If one or more of the lights do not dim immediately but gets brighter:
 - immediately close the last breaker opened to reenergize the bus
 - investigate the ferroresonance protection
- If all three lights dim immediately:
 - reset the targets (flags) on the ferroresonance protection relays
- If relay targets did not operate:
 - investigate the ferroresonance protection circuit

4.6 Terminology for Switching Orders

Time - Military time, or 24 hour clock, based on prevailing Central Time.

Check Ring for Close - Verify by visual inspection that all devices in the ring are in the closed position.

Remove / Roll Loads - Remove all loads connected to a power transformer. This may be done by tripping applicable low side breakers or by rolling load to an adjacent transformer and tripping applicable low side breakers.

Trip - Initiate and complete an opening operation on a device.

Close - Initiate and complete a closing operation on a device.

Hold Tag - A tag placed on a device to indicate the equipment shall not be allowed to change operating state. The tag shall indicate the party who placed the tag.

Trip and Hold - Trip device, physically or mechanically (e.g., affix padlock) disable device from closing, and place a Hold Tag on the device.

Check for Trip and Hold - Verify by visual inspection that a device is in the trip position and place a Hold Tag on the device.

Secure Against Operation (SAO) - Physically, mechanically, or electrically disable a device (e.g., a motor operated disconnect switch) to prevent it from operating.

Secondary Potential Fuse (SPF) - Remove and tag fuses on the secondary side of potential devices to prevent the possibility of back energizing isolated equipment.

4.7 Switching Order

SWITCHING

ORDER # _____

SUBSTATION _____

EQUIPMENT _____

OUT

RESTORE

DISP _____ DISP. _____

TIME _____ TIME _____

DATE _____ DATE _____

EXEC. BY _____ EXEC. BY _____

TIME _____ TIME _____

CLEARANCE # _____

ISSUED

RELEASED

DISP. _____ DISP. _____

TIME _____ TIME _____

DATE _____ DATE _____

ISSUED TO _____

NUMBER OF MEN _____ AND GROUNDS _____

ON _____

INSTRUCTIONS

SWITCHING PROCEDURES DISCUSSED
WITH ALL MEMBERS OF CREW: Y N

CREW INITIALS _____

4.8 Transmission Switching Check List

4.8.1 The following basic procedures are for the day of the switching after the outage has been scheduled with and authorized by the RTO System Scheduler (713-207-2196). This applies to the Customer's substation that is directly interconnected with CNP's transmission system.

- ☐ Call the RTO System Controller at 281-894-0491 and request a Switching Order
 - ☐ Provide name, company affiliation, and telephone number
 - ☐ Provide Substation ID
 - ☐ Describe reason for request
 - ☐ Fill out Switching Order
 - ☐ Record the Switching Order number
 - ☐ Record start time provided by the RTO System Controller
 - ☐ Record the RTO System Controller's name
 - ☐ Record the instructions to take equipment OUT
 - ☐ Repeat the instructions
- ☐ Execute the Switching Order placing Hold Tags where appropriate
- ☐ Call the RTO System Controller when the instructions have been completed
 - ☐ Report the actual completion time
 - ☐ Record the completion time provided by the RTO System Controller on Switching Order
 - ☐ Request a Clearance if necessary
 - ☐ Provide the number of personnel in the crew
 - ☐ Provide the number of and location of grounds
- ☐ Verify apparatus is de-energized with a hot line indicator
- ☐ Install protective grounds when required
- ☐ Perform work
- ☐ Remove protective grounds if installed
- ☐ Call the RTO System Controller to request to RESTORE equipment
 - ☐ Report whether more than one Hold Tag is on any device
 - ☐ Provide Clearance number if applicable
 - ☐ Provide the number of personnel in the crew clear of the apparatus
 - ☐ Provide the number of grounds removed
 - ☐ Provide the Switching Order number
 - ☐ Fill out Switching Order
 - ☐ Record start time provided by the RTO System Controller
 - ☐ Record the RTO System Controller's name
 - ☐ Discuss performing Switching Order instructions in reverse order
- ☐ Alert all personnel to move to a safe distance from apparatus being energized
- ☐ Execute the Switching Order removing Hold Tags where appropriate
- ☐ Call the RTO System Controller when restoration has been completed
 - ☐ Report the actual completion time
 - ☐ Record the completion time provided by the RTO System Controller on Switching Order

6 Unplanned Outages

6.1 Unplanned Outages

- 6.1.1 ERCOT Protocols require that CNP notify ERCOT of all unplanned transmission outages.
- 6.1.2 The Customer shall contact the RTO System Controller as soon as possible whenever any unplanned tripping of any high voltage (60 kV and higher) circuit breaker occurs. CNP crews will be dispatched when high voltage circuit breakers remain open in the Customer's substation that is directly interconnected with CNP's transmission system. CNP crews will reset relay targets except in emergency situations. An "Unplanned Outage Check List" form is included in this procedure.
- 6.1.3 CNP crews are not dispatched when high voltage circuit breakers remain open in a remote, non-CNP substation connected to the Customer's substation, but not directly interconnected with the CNP system. In such a case, the Customer shall discuss and evaluate the event with the RTO System Controller. The Customer shall notify the RTO System Controller prior to any switching.
- 6.1.4 In the event of an unplanned generation outage, the Customer or his designated representative shall advise CNP's RTO System Controller as soon as possible.

6.2 Unplanned Outages of 345 kV Facilities Equipped with Ferroresonance Protection

- 6.2.1 Ferroresonance protection is installed whenever a wound potential transformer ("PT") is connected to a 345 kV and the possibility of a ferroresonance condition occurring exists. If applicable, the Customer shall implement specific procedures for unplanned tripping of 345 kV equipment that has ferroresonance protection installed. Procedures shall include the following:

- ☐ Visually inspect the potential transformer lights on all three phases
- ☐ If one or more of the lights are bright and not dim
 - ☐ Open all the breaker disconnect switches to isolate the potential transformers
 - ☐ Disconnect/Remove the PTs from service on the phases with the bright lights
- ☐ If one or more of the lights are dark and not dim
 - ☐ Open all the breaker disconnect switches along the affected bus
 - ☐ Disconnect/Remove the PTs from service on the phases with the dark lights
- ☐ If remote monitoring of potential transformer voltages indicated a ferroresonance condition occurred
 - ☐ Open all the breaker disconnect switches to isolate the potential transformers
 - ☐ Disconnect/Remove the PTs from service on the phases that indicated ferroresonance
- ☐ If all three lights are dim
 - ☐ Reset the targets on the ferroresonance protection relays
- ☐ If relay targets do not indicate proper action
 - ☐ Investigate the ferroresonance protection circuit

6.3 Emergency Switching

6.3.1 In emergency situations, switching may be performed prior to a CNP crew arriving at the Customer's substation. A qualified person, authorized by the Customer, may operate breakers and switches based upon switching instructions provided by the RTO System Controller. Prior to switching, all relay trip targets shall be reset after the Customer has recorded them and reported them to the RTO System Controller. All personnel shall move to a safe distance from apparatus being energized prior to switching. An "Emergency Switching Check List" form is included in this procedure.

6.3.2 UNPLANNED OUTAGE CHECK LIST

6.3.3 The following instructions are for whenever an unplanned tripping of a transmission service voltage breaker occurs.

- ☐ Call the RTO System Controller at 281-894-0491
- ☐ Provide the following information to the RTO System Controller
 - ☐ Your name, company affiliation, and telephone number
 - ☐ Substation ID
 - ☐ Nature of the problem
 - ☐ Time of outage
 - ☐ Status of all breakers and switches (i.e., open, closed, tagged)
 - ☐ Cause of the event if known
 - ☐ Fault location and faulted equipment if known
 - ☐ Fires and their proximity to energized equipment
 - ☐ Plant and substation entry constraints (e.g., chemical releases)
- ☐ Record the RTO System Controller's name
- ☐ Investigate and provide the following information to the RTO System Controller
 - ☐ Cause of the event if found during investigation
 - ☐ Fault location and faulted equipment if found during investigation
 - ☐ Number of trip operations for each breaker (i.e., change in breaker veeder reading)
 - ☐ Relay trip targets - Do not reset targets
- ☐ Discuss outage with CNP crews
- ☐ CNP crews record and reset relay trip targets
- ☐ CNP crews record breaker veeder readings
- ☐ Resolve outage and complete any necessary corrective action
 - ☐ Call the RTO System Controller at 281-894-0491 to request to RESTORE equipment
 - ☐ Record the instructions to RESTORE equipment
 - ☐ Repeat the instructions
- ☐ Execute the instructions
- ☐ Call the RTO System Controller when instructions have been completed

BY: _____ DATE: _____

6.4 EMERGENCY SWITCHING CHECK LIST

6.4.1 The following basic procedures are for emergency situations. Contact the RTO System Controller at one of the following telephone numbers.

- ☐ Call the RTO System Controller HOTLINE at 281-894-1625
- ☐ Provide the following information to the RTO System Controller
 - ☐ Your name, company affiliation, and telephone number
 - ☐ Substation ID ☐ Nature of the problem
 - ☐ Time of outage
 - ☐ Status of all breakers and switches (i.e., open, closed, tagged)
 - ☐ Cause of the event if known
 - ☐ Fault location and faulted equipment if known
 - ☐ Fires and their proximity to energized equipment
 - ☐ Plant and substation entry constraints (e.g., chemical releases)
 - ☐ Relay trip targets
- ☐ Record the RTO System Controller's name
- ☐ Record the instructions to RESTORE equipment
- ☐ Reset relay trip targets
- ☐ Execute the instructions
- ☐ Call the RTO System Controller at 281-894-0491 when instructions have been completed

BY: _____ DATE: _____

6.5 Other Emergency Conditions

6.5.1 Customer substations are an integral part of the interconnected transmission system and disabling them has an impact on the electrical grid. In certain emergency situations, the Customer may evacuate or shut down their facility. In such cases, the Customer shall endeavor to keep the portion of their substation that is directly connected to the transmission grid in service, unless specifically directed otherwise by ERCOT or CNP's RTO System Controller.

7 Generation Operation

7.1 Applicability

7.1.1 This section applies only if the Customer operates electric generating facilities and participates in the wholesale transmission market. The Customer shall follow the ERCOT Operating Guides and ERCOT Protocols or other regulatory requirements that apply to their facilities

7.2 Unit Operation

7.2.1 Where CNP owns the interconnecting substation and there is not an in-line breaker to synchronize a generating unit, the Customer has control of CNP's

substation breakers that are functioning as generator breakers. CNP has operational control of the disconnect switches associated with these breakers.

- 7.2.2 The Customer shall have generation control personnel on duty at the generating unit site at all times that the generating units are on-line.
- 7.2.3 The Customer or Customer's representative shall notify the RTO System Controller (281-894-0491) immediately before a unit is synchronized and connected to CNP's transmission system.
- 7.2.4 The Customer shall operate units to support the transmission system voltage by regulating reactive power output up to levels demonstrated in the ERCOT tests as required in the ERCOT Protocols. The Customer shall maintain the ERCOT specified voltage level unless otherwise directed by the RTO System Dispatcher or ERCOT.
- 7.2.5 The Customer's voltage regulators, speed governors, and power system stabilizers, if required by ERCOT, shall be in service whenever generating units are on-line. The Customer shall immediately notify ERCOT whenever a voltage regulator, speed governor, or power system stabilizer is taken out of service or placed back in service. The Customer shall maintain settings as close as practical to five percent speed regulation.
- 7.2.6 The Customer shall maintain generating units on-line during system frequency and voltage excursions per ERCOT Operating Guides: www.ercot.com/mktrules/guides/noperating/cur.

8 Protective Relaying and Control

- 8.1 Settings for Relays Installed for the Protection and Automatic Reclosing of CNP Transmission Lines
 - 8.1.1 CNP calculates and implements all settings for the Customer's relays installed for the protection and automatic reclosing of CNP transmission lines and for the Customer's relays installed to prevent back-energizing CNP's system from generation installed on the low side of the Customer's power transformers. On a case-by-case basis, CNP may issue settings for other relays owned by the Customer. The relay settings implemented by CNP for the Customer's relays will be provided to the Customer upon request.
- 8.2 Applicable Relay Settings
 - 8.2.1 The Customer shall provide CNP with the settings of the Customer's relays that trip or close the Customer's high voltage (60 kV and higher) circuit breakers. The Customer shall provide to the Transmission Accounts representative any proposed settings changes for such relays for CNP's review.
- 8.3 Communications Connections to Electronic Devices
 - 8.3.1 An electronic device that can directly or indirectly trip a circuit breaker connected to a CNP transmission circuit is not allowed to be monitored through routable protocol communication (i.e. Ethernet) or dial-up communication. Monitoring of

this electronic device for metering data or event data or any communications processor connected to this electronic device is only allowed through a serial port, such as Modbus, DNP3, or SEL Fast Meter. Control commands are not allowed through the serial port.

9 Equipment Additions, Replacement, Upgrades and Removal

9.1 Equipment Changes

9.1.1 The Customer shall notify the Transmission Accounts representative with sufficient notice to meet the timeline and data reporting requirements in Table 2 below when equipment additions or removals are planned or when high voltage equipment or associated equipment requires modification or replacement. The Customer shall notify the Transmission Accounts representative prior to performing functional testing and allow CNP to witness the testing.

9.1.2 The Customer shall provide equipment and installation, including testing and inspections, per applicable CNP specifications and bill of materials. The Customer shall provide necessary details, such as drawings, specifications, and manufacturer type and catalog number, for CNP's review. All CNP comments must be incorporated or resolved before any equipment or materials are procured or any work is begun.

9.1.3 ERCOT Protocols require that all changes to equipment rated at 60 kV and above be communicated by CNP to ERCOT prior to the in-service date as specified in Table 2 below.

9.1.4 ERCOT only approves energization requests when the transmission element is satisfactorily modeled in the ERCOT Network Operations Model.

9.2 Modification, Repair, and Replacement of Customer Equipment

9.2.1 CNP notifies the Customer of problems in their facilities of which CNP becomes aware. The Customer shall provide any needed equipment modifications, repairs, or replacement within an appropriate time frame. The Customer shall replace equipment that CNP demonstrates is no longer maintainable. On a case-by-case basis, the Customer and CNP shall develop the responsibilities for the modification, repair, and replacement of this equipment.

9.2.2 Industry experience may dictate that certain equipment be modified, repaired, or replaced due to manufacturing defects or unacceptable failure rates and consequences. The Customer shall, within an appropriate time frame, modify, repair, or replace equipment based on manufacturer issued product service advisories or CNP issued advisories.

Customer Substation Equipment Additions, Relocations, Upgrades and/or Removals

When installing, relocating, or upgrading transmission system equipment, Customers must contact their appropriate CNP Transmission Accounts representative with sufficient notice to meet the timelines and data requirements shown below. ERCOT Nodal Protocols Section 3.10.1 requires that all changes to transmission equipment energized at 60 kV and above be communicated by CNP to ERCOT using the Network Operations Model Change Request ("NOMCR") process as summarized below:

Table 2

Target Physical Equipment In-Service Month	Deadline to Submit to RTO	Timeline to Submit initial information to Transmission Accounts Rep
Month of January	Sept. 1	June 1 (prior year)
Month of February	Oct. 1	July 1 (prior year)
Month of March	Nov. 1	August 1 (prior year)
Month of April	Dec. 1	September 1 (prior year)
Month of May	Jan. 1	October 1 (prior year)
Month of June	Feb. 1	November 1 (prior year)
Month of July	Mar. 1	December 1 (prior year)
Month of August	Apr. 1	January 1
Month of September	May 1	February 1
Month of October	June 1	March 1
Month of November	July 1	April 1
Month of December	Aug. 1	May 1

(1) Pursuant to the ERCOT Nodal Protocols, CNP requires the following information to meet the deadlines shown above. The NOMCR data requirements include, but are not limited to:

- Completed project expected in-service date
- Equipment ratings
- Device nomenclature will be provided by CNP
- Engineering drawings showing the final configuration.
- Construction sequence with expected energization dates for each piece of equipment.
- Identification of SCADA data points
- Additional data as may be determined by ERCOT

(2) Known outage requests must be submitted by Real Time Operations with the NOMCR's for each expected energization date.

(3) ERCOT only approves energization requests when the Transmission Element is satisfactorily modeled in the ERCOT Network Operations Model.

10 Equipment Maintenance

10.1 CNP Maintenance

- 10.1.1 CNP will perform periodic testing of certain of the Customer's equipment if the equipment is installed for the protection of CNP transmission lines. This includes power line carrier tuning and testing of wave traps, tuners, and carrier sets and calibration and testing of relays and fiber optic communication equipment. CNP will perform periodic calibration and testing of SCADA transducers that provide real time data to CNP. CNP may designate additional equipment of the Customer for maintenance by CNP. CNP will label equipment maintained by CNP.
- 10.1.2 CNP will endeavor to coordinate CNP maintenance with the Customer's maintenance outages.
- 10.1.3 CNP transmission line outages are required for CNP to perform testing of applicable wave traps of the Customer.
- 10.1.4 Outages of approximately ten hours duration for certain of the Customer's facilities are required for CNP's periodic maintenance of CNP high voltage metering instrument transformers. Transformer outages are required for metering instrument transformers installed on the high side of transformers. A total separation from CNP's system may be required for certain substation configurations.

10.2 Customer Maintenance

- 10.2.1 The Customer shall perform periodic inspections and preventive maintenance on all structures and equipment owned by the Customer except for equipment designated by CNP for maintenance by CNP. The Customer shall not perform preventive maintenance on the equipment maintained by CNP. The Customer shall maintain equipment logs and test reports, which shall be provided to CNP upon request.
- 10.2.2 Depending upon ownership, equipment maintained by the Customer may include the following: line surge arresters, potential and current transformers not owned by CNP, coupling capacitors, coupling capacitor potential devices, switches (including auxiliary contacts and motors if installed), breakers (bushings, mechanism, tanks), transformers (bushings, surge arresters, main tank, load tap changer, alarms), relays not tested by CNP, and DC battery system equipment.
- 10.2.3 The Customer shall notify the RTO System Scheduler at least ten (10) business days in advance before performing maintenance on potential or current transformers connected to CNP meters.

10.3 Monthly Inspections

- 10.3.1 The Customer shall perform monthly inspections to include the following as applicable.
 - ☐ Visual inspection of outdoor equipment including inside control cabinets
 - ☐ Verify oil levels
 - ☐ Verify transformer nitrogen blanket pressure

- ☐ Verify transformer fan operation
- ☐ Verify breaker compressor or hydraulic pump operation
- ☐ Drain condensate from breaker mechanism air tanks
- ☐ Verify operation of control house heating and air conditioning

10.4 Quarterly, Semi-annual Testing, and Inspection

10.4.1 CNP recommends Total Combustible Gas ("TCG") testing once every three months on transformers equipped with a nitrogen blanket.

10.4.2 Infrared thermography of high voltage equipment is recommended once every six months.

10.5 DC Battery System

10.5.1 The Customer shall perform periodic DC battery system equipment inspections and maintenance to include the following as applicable.

- ☐ Every Month
 - ☐ Visually inspect batteries (corroded connections, leaks, cracked cases)
 - ☐ Visually inspect chargers
 - ☐ Verify and correct water levels
 - ☐ Record and verify float voltage
 - ☐ Record and verify ground reference voltage
- ☐ Every Six Months
 - ☐ Clean battery surfaces
 - ☐ Check charger ventilation
 - ☐ Record and verify cell voltages
 - ☐ Perform internal cell resistance testing
 - ☐ Measure inter-cell connection resistance
 - ☐ Record and verify specific gravity reading
 - ☐ Verify float and equalize voltage settings
 - ☐ Verify proper operation of chargers and alarms
 - ☐ Verify proper operation of high voltage shutdown circuits

10.6 Functional Testing

10.6.1 The Customer shall perform functional trip testing of each high voltage circuit breaker by tripping and closing the breaker from the breaker control switch at least once every year. This breaker tripping may be coordinated with the switching required for maintenance outages.

10.6.2 High voltage circuit breakers equipped with dual trip coils that use a common actuating shaft (e.g., Allis Chalmers, Westinghouse) require special functional testing. The Customer shall perform a test on each breaker by applying trip voltage simultaneously to both trip coils. If the breaker does not immediately trip, the voltage must be quickly removed to avoid damaging the coils. After verifying the wiring, the Customer shall appropriately label the control wiring. The Customer's maintenance procedures shall include tagging and properly reconnecting trip coil wiring. The Customer shall perform this test whenever a trip coil is replaced or breaker control wiring is modified.

10.7 Special Inspection and Testing

- 10.7.1 Industry experience may dictate that certain equipment requires special inspection and testing due to manufacturing defects or unacceptable failure rates and consequences. The Customer shall perform special inspection and testing based on manufacturer issued product service advisories and CNP issued advisories.

11 Plant Design Considerations

11.1 Emergency Systems

- 11.1.1 Continuous electric service from utility power systems cannot be guaranteed even for facilities that are connected to a large number of transmission lines. The possibility exists that a total power outage or separation from the utility system may occur. It is important to consider this when plant emergency systems are designed.

11.2 Automatic Reclosing

- 11.2.1 CNP utilizes automatic reclosing of high voltage circuit breakers following unplanned tripping of CNP transmission lines. CNP endeavors to intentionally delay the initial reclose attempt by at least one second. The Customer is responsible for the separation of necessary motors or other equipment within one second of the tripping.

11.3 System Voltage

- 11.3.1 Electric service from a utility power system cannot be guaranteed against fluctuations. Voltage sag is a common fluctuation that occurs during the time of a fault. The large majority of faults on a utility transmission system are single line-to-ground faults. With automatic reclosing of circuit breakers, several voltage sags can occur within a one-minute period. Most voltage sags from faults on transmission systems have a very short duration of less than ten cycles with high-speed fault clearing. Another common fluctuation is a transient voltage oscillation that occurs each time a capacitor bank is energized. Equipment, such as motor contractors, adjustable speed drives, programmable logic controllers, and high intensity discharge lamps, can be sensitive to these short duration voltage sag and transient voltage oscillation.
- 11.3.2 It is important to consider voltage sag "ride-through" for equipment applied to critical processes where nuisance tripping can cause a whole process to shut down. Plant power systems and equipment control systems can be designed or modified to ride-through the most common voltage sags and transient voltage oscillations on utility power systems. CNP will provide additional information upon request.

11.4 Electrical Protection Coordination Studies

- 11.4.1 If the Customer performs plant electrical protection coordination studies, the Customer may contact a Transmission Accounts representative to request the available CNP system fault current and system impedance at the Customer's facility.

11.5 Substation Design Specifications

- 11.5.1 The Customer can contact a Transmission Accounts representative to request current CNP specifications and applicable bills of material for new substations and substation equipment additions and replacement.

**Exhibit “G”
Telemetry Specification**

Attached

SPECIFICATION
FOR
REMOTE TELEMETRY OF A CUSTOMER OWNED FACILITY



ELECTRIC ENGINEERING DEPARTMENT
P.O. BOX 1700 HOUSTON, TEXAS 77251

REFERENCE DRAWINGS: Latest Revisions of
CenterPoint Energy, CNP Drawing No.BSC-007-400-01 SH.3.
CenterPoint Energy, CNP Drawing No.BSC-564-500-01 SH.1, 2.

REFERENCE SPECIFICATIONS: Latest Revisions of
CenterPoint Energy, CNP Specification No. 007-231-14, Customer 138kV Substation Design.

REFERENCE DOCUMENTS: Latest Revisions of
CenterPoint Energy Transmission & Substation Outage and Clearance Coordination Procedures.

						CenterPoint Energy Houston Electric			
						WRITTEN	12/30/03	C.W. Mogannam	
						CHECKED	12/30/03	R.M. Secrest	
						APPROVED	12/30/03	M.W. Furnish	
						Page 1 of 12			
						SPC	007	400	02
6	3/26/2012	Revised Sec.2, 3, 5, 7, Fig 1,2	CWM	WAC	MDB				
5	2/30/2004	Revised for EPS METER Communication	CWM	CWM	MWF				
NO	DATE	REVISION	BY	CH	APP				

CONTENTS

TITLE	PAGE NO.
SCOPE	3
GENERAL	3
SCADA SYSTEM	4
DESIGN, LAYOUT, AND PHYSICAL CRTERIA	5
COMMUNICATION LINES	6
CALIBRATION AND MAINTENANCE	6
CURRENT TRANSFORMERS AND POTENTIAL TRANSFORMERS	7
DRAWING APPROVAL	7
TABLE 1 – APPROVED TRANSDUCERS & TEST SWITCHES	8
LIST OF ABBREVIATIONS USED IN FIGURES	9
FIGURE 1 – CUSTOMER COMMUNICATION BLOCK DIAGRAM	10
FIGURE 2 – GENERATOR COMMUNICATIONS BLOCK DIAGRAM	11
FIGURE 3 – BREAKER CONTROL AND STATUS WIRING	12
ATTACHMENT - SCADA RTU CABINET DETAIL	

CenterPoint Energy				
Houston Electric				
WRITTEN	12/30/03	C.W. Mogannam		
CHECKED	12/30/03	R.M. Secrest		
APROVED	12/30/03	M.W. Furnish		
	Page 2 of 12			
	SPC	007	400	02

1. SCOPE

- 1.1. This specification defines the requirements for the engineering, installation, calibration, and commissioning of a Supervisory Control and Data Acquisition (SCADA) Remote Terminal Unit (RTU) and Metering Telemetry, as applicable, at a customer owned facility on the CenterPoint Energy (CNP) transmission system.

2. GENERAL

- 2.1. Installation of a CNP SCADA RTU in customer-owned facilities is typically required for all new transmission substations that have a circuit breaker that sectionalizes a CNP transmission line.
- 2.2. At tap substations CNP typically uses the high voltage revenue meters for telemetry of real time data.
- 2.3. All equipment and work covered by this specification shall be designed, constructed, and tested in accordance with the latest revisions or editions of industry requirements in effect at the time of fabrication. Industry requirements include the applicable codes, standards, specifications, regulations, tests, and procedures of all federal, state and local laws, and include (but are not limited to) the following:
 - 2.3.1. American National Standards Institute (ANSI)
 - 2.3.2. IEEE formerly the Institute of Electrical and Electronics Engineers, Inc.
 - 2.3.3. National Electrical Manufacturers Association (NEMA)
 - 2.3.4. Occupational Safety and Health Administration (OSHA)
 - 2.3.5. Federal Communications Commission (FCC)
- 2.4. In the event of conflicting requirements, the order of precedence shall be this specification, other referenced CNP specifications, and the standards referenced in section 2.2.
- 2.5. CNP will specify the SCADA RTU and associated SCADA equipment. The SCADA RTU will be in a standalone cabinet to be installed in the Customer substation control building. The customer must provide interface equipment such as transducers, status and alarm contacts, cabling, terminal blocks, and conduit. Communication equipment must also be installed and wired by Customer in the Customer substation control building. Metering Cabinets will be installed in accordance with the CNP Customer 138KV Substation Design Specification.
- 2.6. Communications between substation devices shall be serial. Routable protocol communication (i.e., Ethernet) or dial-up communication shall not be used for the CNP transmission system protection devices.
- 2.7. Equipment specified may be substituted with written approval from CNP Substation Projects, System Operations.
- 2.8. All equipment, engineering and installation shall be furnished by the Customer unless otherwise noted in this specification or separate agreements.
- 2.9. Generating facilities will provide CNP additional generator data via Modbus or DNP3 communications protocol from the Plant control system or RTU to the CNP RTU located in the substation. Selected substation data from the CNP RTU is available to the plant. See Figure 2 for typical communications diagram.

CenterPoint Energy Houston Electric			
WRITTEN	12/30/03	C.W. Mogannam	
CHECKED	12/30/03	R.M. Secrest	
APROVED	12/30/03	M.W. Furnish	
	Page 3 of 12		
	SPC	007	400 02

3. SCADA SYSTEM

- 3.1. The SCADA RTU is composed of three subsystems: (1) analog, (2) status, and (3) control.
- 3.2. Analog Subsystem: Analog Data is typically gathered from Intelligent Electronic Devices (IEDs) or transducers. IEDs include Electronic Meters and microprocessor relays. Communication to various IEDs shall be serial, via DNP3 or Modbus protocols. If transducers are used, CNP will determine the transducer electrical requirements. See Table 1 for acceptable transducer models. Meter test switches are required for the transducer current and voltage connections. The Customer shall provide an electrical relaying and metering one-line diagram of the proposed Customer-owned substation for review by CNP.
- 3.2.1. Customer Substation Analog Telemetry Requirements
- 3.2.1.1. Kilovolts for each substation bus, AØ
 - 3.2.1.2. Megawatts for each line position, 3Ø
 - 3.2.1.3. Megavars for each line position, 3Ø
 - 3.2.1.4. Megawatts for each substation load, 3Ø
 - 3.2.1.5. Megavars for each substation load, 3Ø
- 3.2.2. CNP will require the following additional analog data from a Generating facility:
- 3.2.2.1. Generator terminal voltage for each generator bus, A phase only
 - 3.2.2.2. Megawatts (net preferred) for each generator unit, 3Ø
 - 3.2.2.3. Megavars (net preferred) for each generator unit, 3Ø
 - 3.2.2.4. Frequency for each generator unit
 - 3.2.2.5. Data from the plant electrical load EPS meters (watts, vars, watt-hour from each meter)
- 3.3. Status Subsystem: The status subsystem of the SCADA RTU shall consist of the following.
- 3.3.1. Status of selected transmission voltage circuit breakers or other devices directly affecting the CNP electrical system, as determined by CNP RTO. Status shall be derived from either an isolated auxiliary "a" contact in the breaker or monitoring a trip coil of the breaker. Refer to Figure 3 for Breaker Status Connections.
- 3.3.2. Indication of low voltage and battery charger failure is required for the 130 VDC battery system(s). Typical charger alarms include the following: low voltage, high voltage, loss of AC input, and loss of charger. All these indications shall be combined so that an occurrence of any one of these shall cause a single battery alarm (normally open contact) to the SCADA RTU.
- 3.3.3. SCADA Close Inhibit (SCI) indication is required of breakers controlled by SCADA whenever a lockout relay can inhibit breaker closure by SCADA. A dry, normally open, contact from that relay shall be supplied for SCI indication. Indication contacts from all lockout relays shall be wired in parallel for a single indication in the SCADA cabinet, see Figure 1.
- 3.3.4. Indication of Carrier Tester (CAR) or Pilot (PIL) relaying failure.
- 3.3.5. Indication for the loss of a potential to a line relay (PTI) that could cause a misoperation of the zone relaying under high load conditions. This alarm is typically generated by a contact from the line relay. Indications from separate relays will be combined for a single alarm.
- 3.3.6. Indication of a failed self check diagnostic of a microprocessor based relay. Designated Relay CPU Fail (RCPU). This alarm is typically generated by a contact from the line relay. Indications from separate relays will be combined for a single alarm.

CenterPoint Energy			
Houston Electric			
WRITTEN	12/30/03	C.W. Mogannam	
CHECKED	12/30/03	R.M. Secrest	
APPROVED	12/30/03	M.W. Furnish	
	Page 4 of 12		
	SPC	007	400 02

3.3.7. CNP will require the following additional status signals from the Generating facility:

3.3.7.1. Generator Breaker for each unit

3.3.7.2. Motor operated switches for each unit

3.3.7.3. Generator automatic voltage regulator status (Automatic/Manual).

3.4. Control Subsystem: The control subsystem of the SCADA RTU shall consist of the following:

3.4.1. CNP shall have remote control of all transmission (69kV, 138kV, 345kV) circuit breakers that directly affect the CNP transmission system. Dual remote control (control of a breaker by both the Customer's control system and CNP RTO) is not permitted. Figure 3 illustrates how SCADA control will interface with a typical breaker control scheme.

3.4.2. CNP shall have remote control, automatic carrier removal (ATCR), of each pilot relaying scheme. A control contact from the SCADA RTU shall be installed in each pilot circuit. See Figure 3 for typical carrier control circuit.

4. DESIGN, LAYOUT , AND PHYSICAL CRITERIA

4.1. SCADA Set Designation: The type of SCADA RTU installed by CNP will depend on the number of controlled breakers.

4.1.1. A free-standing cabinet typically 24" wide by 18" deep and 72" tall, with front access. Clearance of 30" in front of the door shall be reserved for maintenance access. Substations with more than four transmission breakers may require a larger cabinet(s). Refer to latest Customer RTU drawing submitted by CNP at the project kick-off.

4.2. Connections to the RTU: The Construction Contractor shall install all interconnections between the SCADA RTU and the substation panels.

4.2.1. The Customer shall provide a 120 VAC, fifteen (15) amp, dedicated AC power circuit, protected by a fifteen (15) amp circuit breaker, to the SCADA RTU Cabinet for lighting and a convenience outlet.

4.2.2. The Customer shall provide a 130 VDC, fifteen (15) amp, dedicated DC power circuit, protected by a fifteen (15) amp circuit breaker, to the SCADA RTU Cabinet for the main RTU power.

4.2.3. All cable shields shall be grounded at a location other than the SCADA RTU Cabinet. Cable shields shall be grounded at one end only.

4.3. Cabling: The Customer shall size and install all conduit or cable troughs in accordance with ANSI/NFPA 70 (National Electrical Code).

4.3.1. Polyethylene Polyvinylchloride (PEPVC) insulated shielded 2/C #16 cable with stranded copper conductors shall be used for terminations for all transducer outputs.

4.3.2. Breaker controls shall use seven conductor (#12) PEPVC insulated cable with stranded copper conductors for terminations.

4.3.3. Two conductor (#10 or larger) PEPVC insulated cable with stranded copper conductors shall be used for terminations of the AC and DC power circuit.

4.3.4. Status and alarms shall be terminated with two conductor (#16) PEPVC insulated cable with stranded copper conductors.

4.3.5. The Customer shall install the necessary conduit or cable management between the SCADA RTU and the relay panels.

CenterPoint Energy			
Houston Electric			
WRITTEN	12/30/03	C.W. Mogannam	
CHECKED	12/30/03	R.M. Secrest	
APROVED	12/30/03	M.W. Furnish	
	Page 5 of 12		
	SPC	007	400
			02

- 4.4. Every breaker with 130 VDC SCADA control circuits shall have breaker coil surge suppression. A one hundred (100) ohm, eleven (11) watt resistor (Ohmite style 995-10A) and a zener diode (Motorola type IN3051A) or equivalent shall be used for this suppression. The series combination of the zener diode and the resistor shall be parallel to each breaker trip and breaker close coil. States slider-link terminal blocks shall be installed in the breakers for terminating the resistors and zener diodes. CNP will verify breaker coil surge suppression. See Figure 3.

5. COMMUNICATION LINES

- 5.1. The Customer shall provide and maintain a full business (1FB) phone line and telephone for voice communications terminating inside the substation control house. This phone shall be direct dial and not go through the Customer's main switchboard or extension. This phone shall have a cord extendable such that the front of the relay panels and SCADA RTU are visible from the phone. This line may also be used by CNP for remote interrogation of meters.
- 5.2. CNP shall provide additional 1FB communication line(s) from the telephone company for EPS Generation metering, as required, terminating at the Customer's telephone demarcation point.
- 5.3. CNP shall provide a separate 4 wire data communication line(s) from the telephone company, terminating at the Customer's telephone demarcation point. This communication line will be used for the SCADA RTU to transmit real time data to CNP RTO. The Customer shall supply the name and telephone number of a representative for purposes of co-ordinating the installation of these line(s). See Figure 1 for a typical Customer Substation Communications Block Diagram. For generator substations, CNP will install two SCADA communication lines. The second line shall be for a back up RTU for redundant generator data. See Figure 2 for a typical generator substation Communications Block Diagram.
- 5.4. For new substations the Customer shall provide and install a communication cable with multiple pairs between the telephone service provider demarcation point and the substation control house. These communication circuits will terminate at the SCADA RTU cabinet and metering cabinet(s). At existing customer substations it may be necessary to install additional cable if there are no existing spares available.
- 5.5. CNP, at its option, may use SCADA Radio (952/928 MHz FM) for the SCADA communication circuit specified in section 5.3. The requirements of the radio, antenna, and associated equipment will be determined by CNP. The Customer shall provide a location for this equipment less than fifty feet from the SCADA RTU.
- 5.6. The telephone communication circuit(s) shall be specified to operate in the event of power failure. The communication line shall remain operational in the event a line conditioner or loopback device fails.

6. CALIBRATION AND MAINTENANCE

- 6.1. After all equipment necessary for remote telemetry has been installed, CNP personnel will calibrate and verify operation of all equipment installed per this specification.
- 6.2. The RTU and transducers installed per this specification will be maintained by CNP unless otherwise noted in an agreement with the Customer. Maintenance will include accuracy checks, recalibration and replacement/repair of equipment when needed.

CenterPoint Energy			
Houston Electric			
WRITTEN	12/30/03	C.W. Mogannam	
CHECKED	12/30/03	R.M. Secrest	
APROVED	12/30/03	M.W. Furnish	
	Page 6 of 12		
	SPC	007	400
			02

6.3. CNP shall furnish locks that will remain in series with Customer locks to permit access to all switchyard gates, substation control house door(s), and disconnect switches.

7. CURRENT TRANSFORMERS AND POTENTIAL TRANSFORMERS

- 7.1. The current transformers (CTs) and potential transformers (PTs) necessary for transducers and meter circuits itemized in this specification shall be provided according to CNP specification 007-231-14. If a particular application is not covered by this specification, then CNP will designate the necessary PT(s) and CT(s) on the substation one-line diagram that the Customer submits for comment and approval.
- 7.2. For some substation layouts a potential rollover circuit shall be needed. If a potential rollover circuit is needed, it will be designated by CNP on the one-line diagram that the Customer submits for comment and approval.

8. DRAWING APPROVAL

8.1. The Contractor shall provide electronic and paper copies of all drawings showing equipment connections and structural details of all equipment associated with SCADA installation as follows.

8.1.1. IFA – Issued For Approval and comment to CNP Substation Projects. These can be submitted electronically or with paper copies. CNP will review the drawings and make corrections, comments or changes as required. PDF (Adobe Acrobat V5 or greater) is the preferred format for IFA.

8.1.2. IFC – Issued For Construction to CNP Substation Projects. These shall be 7 sets of 11 x 17 paper copies for CNP Engineering, CNP Substation Construction Coordinators and Substation Performance. Additionally, the Contractor shall supply a CD with a complete set of prints saved in Microstation ver. J(7) and PDF format for additional copies.

8.1.3. As Built – The Contractor shall make any reasonable corrections to the drawings that result from installation and commissioning of the SCADA RTU. These shall be completed within 30 days of the construction completion. CNP Substation Projects shall approve as-built drawings for final issue.

8.1.4. Final Issue – the Contractor shall issue all SCADA prints to the CNP drawing management system in Microstation Version J(7) Format. All drawings (Customer and SCADA) shall be saved on a compact disc (CD) for CNP records. Customer drawing(s) shall be in the PDF format. The CD shall be labelled with the Project name, Contractor name, Contractor project number, CNP contract number and date.

8.1.5. The Customer shall be copied on these drawings as specified by the Customer.

8.2. Drawings required by this specification include:

1. Substation one-line relaying and metering diagrams illustrating the overall telemetry scheme,
2. Substation control house layout(s) and floor plan(s),
3. Conduit and cable lists
4. Conduit Layout or Plan and Profile
5. RTU manufacturers prints and Customer connections
6. AC Schematics for all power and control circuits,
7. AC Relaying Schematics (Electrical Three-Line),
8. Relay panel layouts,
9. Bill of material for items required by this specification,

CenterPoint Energy			
Houston Electric			
WRITTEN	12/30/03	C.W. Mogannam	
CHECKED	12/30/03	R.M. Secrest	
APROVED	12/30/03	M.W. Furnish	
	Page 7 of 12		
	SPC	007	400

10. Battery charger alarm relay(s) schematics,
11. AC & DC Distribution Panels,
12. Communication cable and conduit routing through Customer facility,
13. Customer Facility Plot Layout,

Table 1 ACCEPTABLE TRANSDUCERS AND TEST SWITCHES

DESCRIPTION	MANUFACTURER	MODEL NO.	MONITORING POINTS
VOLTAGE TRANSDUCER	AMETEK SCIENTIFIC COLUMBUS	VT110A4	ONE PER SUBSTATION BUS
TEST SWITCH SINGLE PHASE	DURHAM	2-1022F-03	ONE PER EACH TRANSDUCER
WATT/VAR TRANSDUCER SINGLE PHASE	AMETEK SCIENTIFIC COLUMBUS	XLWV5C5	ONE PER EACH LINE OR LOAD
WATT/VAR TRANSDUCER THREE PHASE	AMETEK SCIENTIFIC COLUMBUS	XLWV342K5A4	ONE PER EACH LINE, GENERATOR OR LOAD
TEST SWITCH THREE PHASE	DURHAM	2-1058F-00	ONE PER EACH TRANSDUCER

CenterPoint Energy			
Houston Electric			
WRITTEN	12/30/03	C.W. Mogannam	
CHECKED	12/30/03	R.M. Secrest	
APPROVED	12/30/03	M.W. Furnish	
Page 8 of 12			
SPC	007	400	02

LIST OF ABBREVIATIONS AND SYMBOLS USED IN FIGURES

aN4, aN14 = TYPICAL WIRE NAMES IN CNP CARRIER RELAYING SCHEMES

ATCR = AUTOMATIC CARRIER REMOVAL

C = CLOSE

CS = CONTROL SWITCH

CVE = SYNCRO-VERIFIER RELAY

ICR = INDICATION CONTROL RELAY

N 11, N21 = TYPICAL WIRE NAMES IN CNP RECLOSE REMOVAL SCHEMES

NO = NORMALLY OPEN

OC = BREAKER CLOSE COTL

RC = AUTOMATIC RECLOSING RELAY

RR = RECLOSE REMOVAL LATCHING RELAY

T = TRIP

TC = BREAKER TRIP COIL

X, Y = AUXILIARY COILS OF RC RELAY

SSS = SLIDER-LINK TERMINAL

R = RESISTOR

DDD = ZENER DIODE

AMS = AUTOMATIC / MANUAL THROWOVER SWITCH

CenterPoint Energy			
Houston Electric			
WRITTEN	12/30/03	C.W. Mogannam	
CHECKED	12/30/03	R.M. Secrest	
APROVED	12/30/03	M.W. Furnish	
	Page 9 of 12		
	SPC	007	400 02

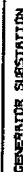
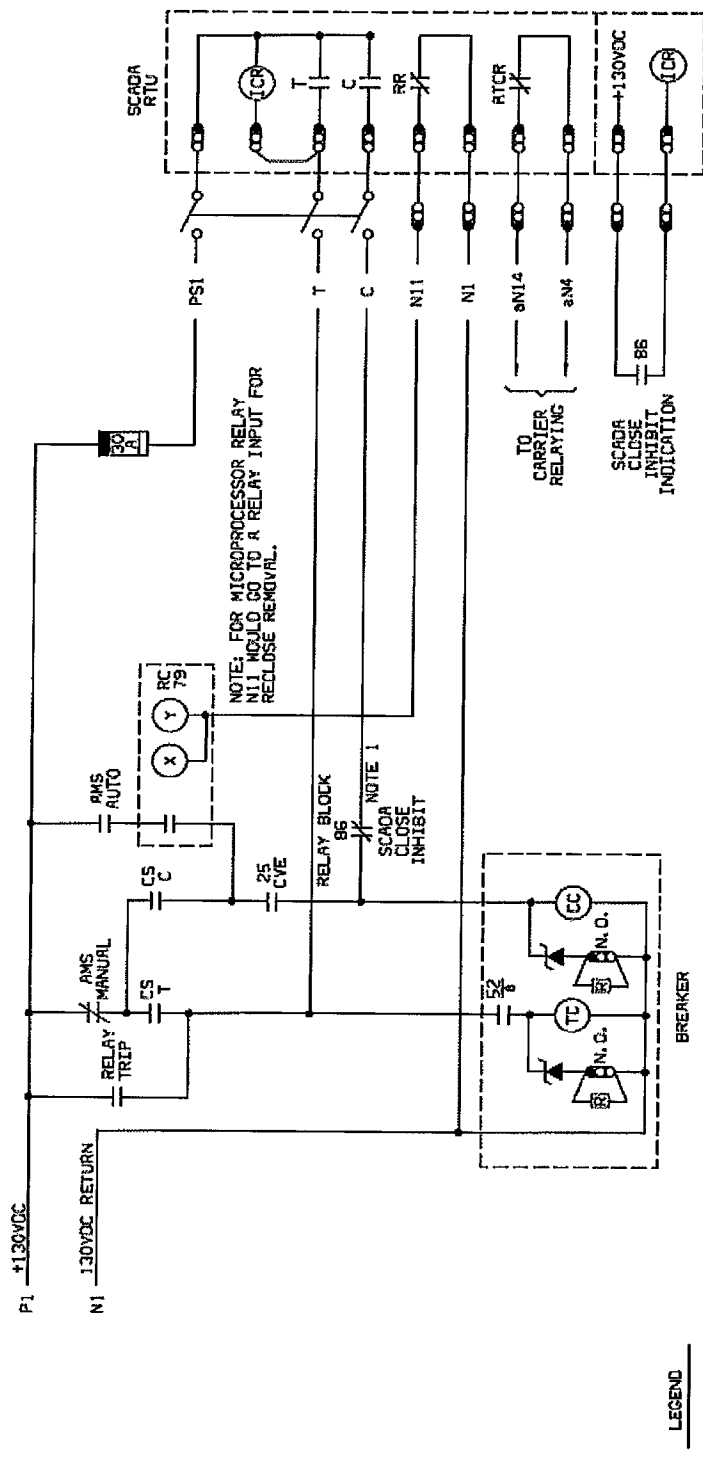


Diagram Figure 2

87



LEGEND

- RR = RECLOSE REMOVAL LATCHING RELAY INSIDE SCADA
- ATCR = AUTOMATIC CARRIER REMOVAL
- ICR = INDICATION CONTROL RELAY MONITORS STATUS OF A SWITCH
- SCI = SCADA CLOSE INHIBIT
- 8↓ - DISCONNECTING TERMINAL BLOCK,
DARK END IS TOP, LINK OPENS DOWN
- FUSE

NOTE: 1,1 RELAY BLOCK SHOWN COULD REPRESENT SEVERAL CONTACTS IN SERIES

SUBSTATION BASIC

FIGURE 3 TYPICAL

TRANSMISSION BKR SCADA CONTROL

CNP Drawing: BSC-007-400-02 SH.3
Transmission breaker SCADA Control

Figure 3

CenterPoint Energy
Houston Electric

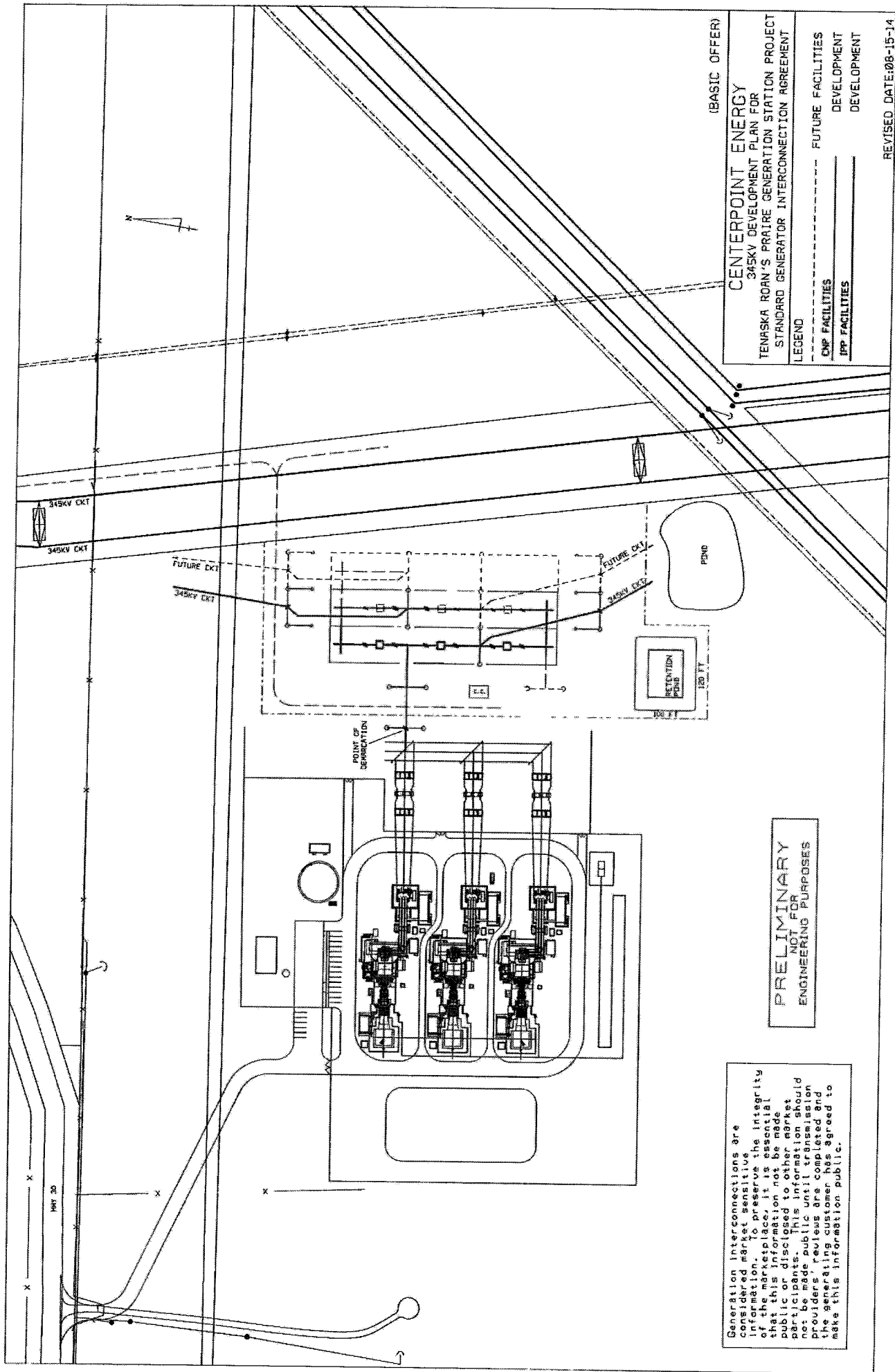
WRITTEN	12/30/03	C.W. Mogannam
CHECKED	12/30/03	R.M. Secrest
APPROVED	12/30/03	M.W. Furnish

Page 12 of 12

SPC	007	400	02
-----	-----	-----	----

**Exhibit “H”
Attached Drawings**

Attached



(BASIC OFFER)

CENTERPOINT ENERGY

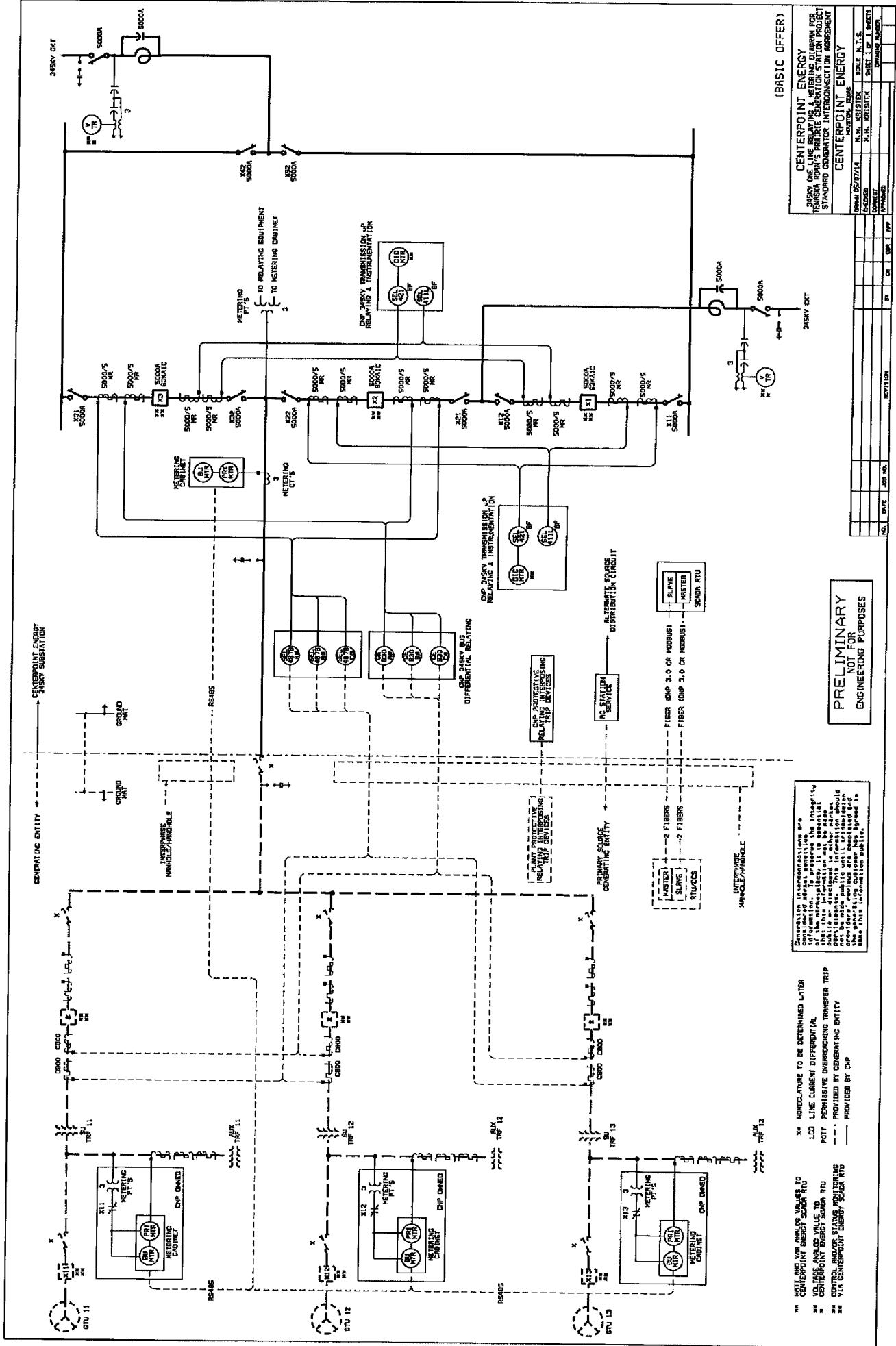
TENASKA ROAN'S PRAIRIE GENERATION STATION PROJECT
STANDARD GENERATOR INTERCONNECTION AGREEMENT

LEGEND	
---	FUTURE FACILITIES
---	DEVELOPMENT
---	DEVELOPMENT

REVISED DATE: 08-15-14

PRELIMINARY
NOT FOR
ENGINEERING PURPOSES

Generation interconnections are considered market sensitive information. To preserve the integrity of the marketplace, it is essential that this information not be made public or disclosed to other market participants. This information should not be made public until transmission providers' reviews are completed and generating customer has agreed to make this information public.



(BASIC OFFER)

CENTERPOINT ENERGY
 JASKY ONE LINE RELAYING & METERING DIAGRAM FOR
 JASKY ONE LINE RELAYING & METERING DIAGRAM FOR
 STANDARD CONNECTION AGREEMENT

CENTERPOINT ENERGY
 JASKY ONE LINE RELAYING & METERING DIAGRAM FOR
 JASKY ONE LINE RELAYING & METERING DIAGRAM FOR
 STANDARD CONNECTION AGREEMENT

DATE: 02/27/14
 DRAWN: N.K. KRISTEK
 CHECKED: N.K. KRISTEK
 APPROVED: N.K. KRISTEK

SCALE: 1/8" = 1' 0"

SHEET: 1 OF 1

PROJECT: JASKY ONE LINE RELAYING & METERING DIAGRAM FOR
 STANDARD CONNECTION AGREEMENT

PRELIMINARY
 NOT FOR
 ENGINEERING PURPOSES

Generating interconnections are
 information. To preserve the integrity
 of this information, it is essential
 that this information is not released
 or otherwise made available to the public
 without the express written consent of
 the generating customer. No person
 shall make this information public.

1. NOT FOR CONSTRUCTION
 2. VOLTAGE AND/OR STATUS MONITORING
 3. CONTROL AND/OR STATUS MONITORING
 4. VIA CENTERPOINT ENERGY SCADA RTU

5. NONREGULATORY TO BE DETERMINED LATER
 6. LINE CURRENT DIFFERENTIAL
 7. POTENTIAL DIFFERENTIAL
 8. PROVIDED BY GENERATING ENTITY
 9. PROVIDED BY CDP

Exhibit "I"

**Minimum acceptable electrical, mechanical, and structural design
characteristics for new 345 kV interconnection substation
construction**

Attached

The CenterPoint Energy minimum acceptable electrical, mechanical, and structural design characteristics for new 345 kV interconnection substation construction are listed below:

1. Maximum operating voltage = 362.5 kV.
2. Impulse level (for equipment not listed below) = 1300 kV BIL.
3. Bus and switch insulator impulse level (leakage) = 1300 kV BIL (231 inches).
4. Apparatus bushing (porcelain insulators, circuit breaker bushings transformer bushings, etc.) impulse level (leakage) = 1300 kV BIL (225 Inches).
5. In a contaminated area, all porcelain (i.e. insulators, circuit breaker bushings transformer bushings, etc.) shall be coated with a room temperature vulcanizing (RTV) silicone rubber.
6. Phase-to-ground clearance (metal-to-metal) = 105 inches.
7. Phase-to-phase clearance (metal-to-metal) = 119 inches.
8. If the configuration of the interconnection substation facilities and connection to the CenterPoint Energy facilities is such that 345 kV transmission system network power flow could flow through the interconnection substation during planned and next contingency outages, then the minimum continuous current rating of all equipment in the interconnection substation is 4,000 amperes.
9. Any 345 kV conductor connections shall utilize a minimum bundled 795 kcmil conductors.
10. Maximum anticipated fault current = 63 kA rms symmetrical three phase and single phase, X/R of 15 and a duration of 0.25 seconds.
11. Normal anticipated wind speed conditions combined with maximum fault current = 15 mph, 63 kA.
12. Maximum anticipated wind speed conditions combined with reduced fault current (80%) = 140 mph, 50 kA.
13. When a CenterPoint Energy substation is adjacent to the interconnection substation, the interconnection substation bus height shall conform to CenterPoint Energy substation bus elevations unless otherwise agreed to by CenterPoint Energy.
14. Direct lightning stroke shielding design shall comply with IEEE standard 998.
15. Substation ground mat and fence grounding system shall comply with IEEE standard 80.

~~16. When a CenterPoint Energy substation is adjacent to the interconnection substation, the~~
interconnection substation shall connect its substation ground mat to the CenterPoint Energy substation ground mat.

17. Unless otherwise agreed to by CenterPoint Energy, the circuit breakers shall have a 4000 ampere continuous current rating, symmetrical interrupting capability of 50 kA (terminal fault as well as short-line fault capability), RMS upgradable to 63 kA RMS with the addition of TRV capacitors. The circuit breaker shall not have a capacitor across the interrupters. Circuit breaker current transformers (CTs) that directly connect to the CenterPoint Energy protective relaying schemes shall be 4000:5 multi-ratio, two CTs per bushing, with C800 accuracy at the 3000:5 tap. The secondary resistance of the CTs shall not exceed 0.0025 ohms per turn.

18. Surge arresters shall be station class with a minimum rated MCOV of 224 kV.