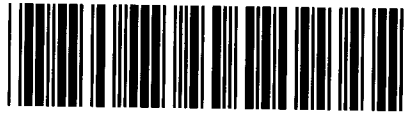




Control Number: 35077



Item Number: 491

Addendum StartPage: 0

**PUC Project No. 35077**

RECEIVED  
2014 OCT 10 PM 4:34  
PUBLIC UTILITY COMMISSION  
FILING CLERK

**Amendment No. 4**

**INTERCONNECTION AGREEMENT**

**Between**

**LCRA Transmission Services Corporation**

**and**

**City of Lampasas**

**Dated**

**September 25, 2014**

491

**FOURTH AMENDMENT TO  
INTERCONNECTION AGREEMENT**

This Fourth Amendment ("Amendment") is made and entered into this 25 day of September, 2014, between the City of Lampasas ("City") and the LCRA Transmission Services Corporation ("LCRA TSC") collectively referred to hereinafter as the Parties.

**WHEREAS**, the LCRA TSC and the City entered into that certain Interconnect Agreement executed June 16, 2008, as amended by that certain Amendment No. 1, executed as of September 30, 2008, as amended by that certain Amendment No. 2, executed as of November 19, 2009, as amended by that certain Amendment No. 3, executed as of December 3, 2010 (collectively, as amended, the "Agreement"); and

**WHEREAS**, the LCRA TSC removed total breakers LP30 and LP90 at Lampasas Substation and replaced them with load break switches

**NOW, THEREFORE**, in consideration of the mutual promises and undertakings herein set forth, the Parties agree to amend the Agreement as follows:

1. Exhibit "A" is deleted in its entirety and the Exhibit "A" attached to this Fourth Amendment is hereby added to the Agreement in lieu thereof.

2. Facility Schedule No. 1 (including the diagrams attached thereto) is deleted in its entirety and Facility Schedule No. 1 attached to this Fourth Amendment is hereby added to the Agreement in lieu thereof.

3. Facility Schedule No. 1 (including the diagrams attached thereto) attached to this Fourth Amendment will become effective upon execution of this Fourth Amendment by the Parties.

Except as otherwise expressly provided for herein, the Agreement will continue in full force and effect in accordance with its terms.

IN WITNESS WHEREOF, the Parties have caused this Fourth Amendment to be executed in several counterparts, each of which shall be deemed an original but all shall constitute one and the same instrument.

CITY OF LAMPASAS

By: 

Name: Jerry Grayson

Title: Mayor  
City of Lampasas

Date: 9/25/14

LCRA TRANSMISSION SERVICES  
CORPORATION

By: 

Name: Ray Pfeiffer, P.E.

Title: Manager, Transmission Engineering  
Lower Colorado River Authority

Date: 9/23/14



**EXHIBIT A**  
Fourth Amendment

[illegible]

## **FACILITY SCHEDULE NO. 1**

### **Amendment No. 4**

1. **Name:** Lampasas Substation
2. **Facility Location:** The Lampasas Substation is located at 494 CR 3400, Lampasas, Lampasas County, Texas 76550.
3. **Points of Interconnection:** There are Twelve (12) Points of Interconnection the Lampasas Substation generally described as:
  - where the incoming distribution line connects to the tubular bus between switches LP11 and LP13 at breaker LP10.
  - where the jumper from breaker LP10 connects to the 4 hole pad on switch LP9.
  - where the jumper from breaker LP10 connects to the 4 hole pad on switch LP11.
  - where the incoming distribution line connects to the tubular bus between switches LP21 and LP23 at breaker LP20.
  - where the jumper from breaker LP20 connects to the 4 hole pad on switch LP19.
  - where the jumper from breaker LP20 connects to the 4 hole pad on switch LP21.
  - where the incoming distribution line connects to the tubular bus between switches LP61 and LP63 at breaker LP60.
  - where the jumper from breaker LP60 connects to the 4 hole pad on switch LP59.
  - where the jumper from breaker LP60 connects to the 4 hole pad on switch LP61.
  - where the incoming distribution line connects to the tubular bus between switches LP81 and LP83 at breaker LP80.
  - where the jumper from breaker LP80 connects to the 4 hole pad on switch LP79.
  - where the jumper from breaker LP80 connects to the 4 hole pad on switch LP81.
4. **Transformation Services Provided by LCRA TSC:** Yes
5. **Metering Services Provided by LCRA TSC:** Yes
6. **Delivery Voltage:** 12.5 kV
7. **Metered Voltage and Location:** The metered voltage is 12.5 kV. The metering current transformers are located in total bay #3 and internal to transformer T3. The metering potential transformers are located on each 12.5 kV operating bus.
8. **One Line Diagram Attached:** Yes
9. **Description of Facilities Owned by Each Party:**

City of Lampasas owns:

  - Four (4) distribution circuits including dead-end insulators that attach to the dead-end structure, conductor, and hardware

- Four (4) distribution circuit breakers LP10, LP20, LP60, and LP80 and associated foundations, jumpers, relaying and cabling

LCRA TSC owns:

The Lampasas Substation including, but not limited to, the following items:

- Two (2) power transformers T3 and T2 with associated surge arresters
- Two (2) circuit switchers CS3345 and CS3715 with disconnect switches 3344 and 3274 and bypass switches 3347 and 3717
- Four (4) 138 kV switches 3342, 3343, 3712 and 3723
- Two (2) load break switches LP35 and LP95
- One (1) single phase current transformer CT8
- Ten (10) distribution, mobile tie bus and total bays including A-frames, trusses, insulators, disconnect switches, surge arresters, 12.5 kV operating and transfer bus, bus potential transformers, and metering current transformers
- Underfrequency relaying equipment
- Station Service equipment
- Control house with battery
- Substation property ground grid, gravel, fencing and other appurtenances

**10. Operational Responsibilities of Each Party:**

- The City will be responsible for the operation of the four (4) distribution circuit breakers serving the City feeders.
- LCRA TSC will be responsible for the operation of the power transformer and the 138 kV equipment.

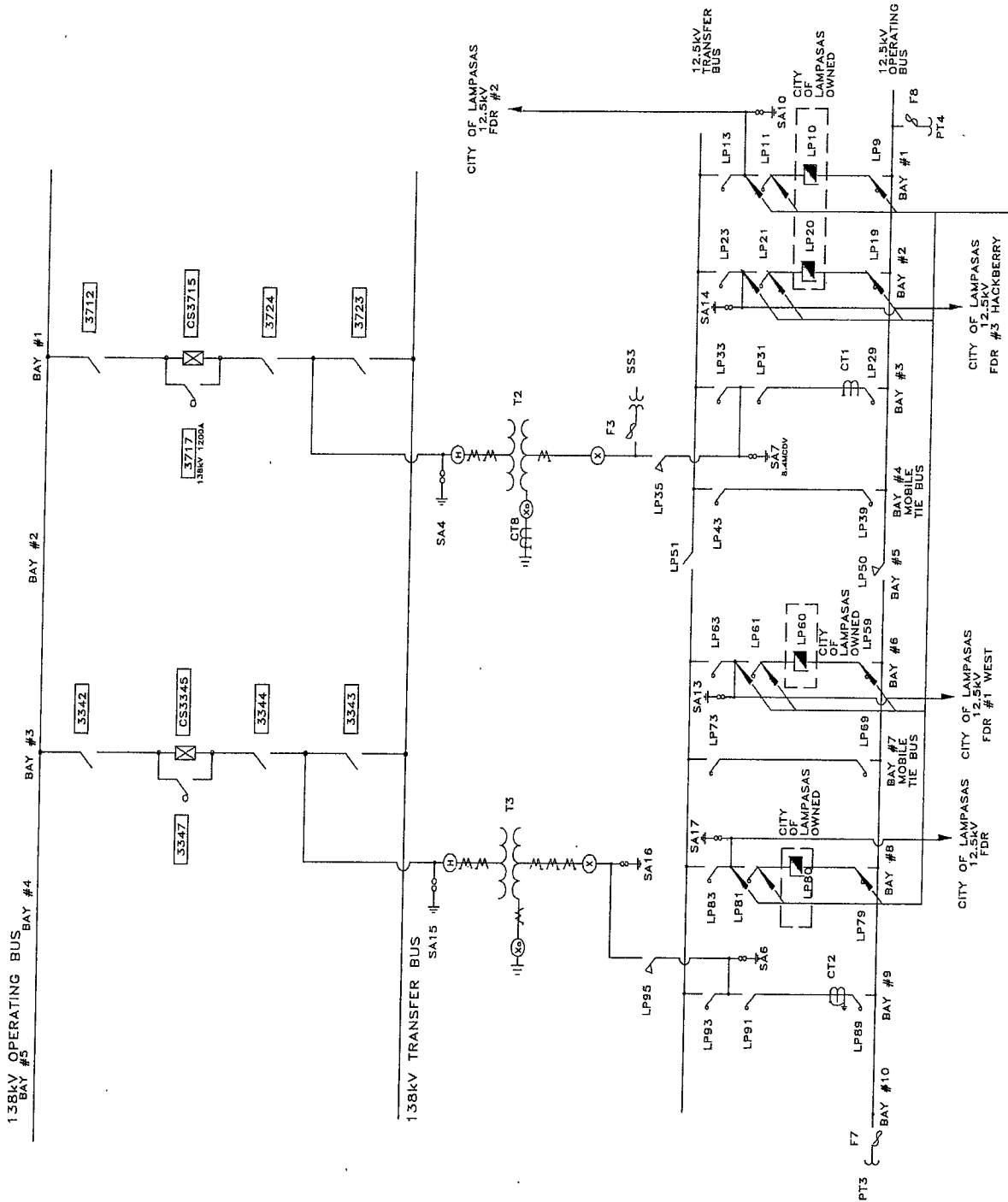
**11. Maintenance Responsibilities of Each Party:** Each Party will be fully responsible for the maintenance of the equipment it owns.

**12. Other Terms and Conditions:**

- The City and LCRA TSC are to share access to the substation by LCRA TSC locks in the gate and in the control house doors.
- LCRA TSC will provide City access to 125 VDC and 120 VAC power. Circuits must have over current protection devices (OCPD) sized according to NEC standards. Panel boards containing the OCPD may belong to either LCRA TSC (if space is available) or City.
- LCRA TSC will provide City with floor space (as available and as necessary) in its control house for the installation of City required panels and equipment.

# LAMPASAS ONE-LINE DIAGRAM

Amendment No. 4



THIS IS NOT A COMPLETE ONE-LINE DIAGRAM  
FOR A COMPLETE ONE-LINE DIAGRAM OF THIS  
SUBSTATION REFER TO DRAWING S150-E-0001-01-XX