



Control Number: 35077



Item Number: 460

Addendum StartPage: 0

Project No. 35077

14 JUN 13 PM 3:55

FILED
FILING CLERK

First Amendment to

INTERCONNECTION AGREEMENT

Between

San Marcos Electric Utility

and

LCRA Transmission Services Corporation

Dated

April 18, 2013

460

/

**FIRST AMENDMENT TO
INTERCONNECTION AGREEMENT**

This First Amendment ("Amendment") is made and entered into this 18th day of April, 2013, between the San Marcos Electric Utility ("City") and the LCRA Transmission Services Corporation ("LCRA TSC"), collectively referred to hereinafter as the Parties.

WHEREAS, LCRA TSC and the City entered into that certain Interconnection Agreement executed May 26, 2009, and;

WHEREAS, LCRA TSC is adding mobile transformer disconnect switches at Strahan substation, and;

WHEREAS, an error was made in the description of the ownership of the property at San Marcos substation in the Interconnection Agreement executed May 26, 2009

NOW, THEREFORE, in consideration of the mutual promises and undertakings herein set forth, the Parties agree to amend the Agreement as follows:

1. Exhibit "A" attached to the Agreement is deleted in its entirety and the Exhibit "A" attached to this First Amendment is hereby added to the Agreement in lieu thereof.
2. Facility Schedule No. 2 (including the diagrams attached thereto) is deleted in its entirety and Facility Schedule No. 2 attached to this First Amendment is hereby added to the Agreement in lieu thereof.
3. Facility Schedule No. 2 (including the diagrams attached thereto) attached to this First Amendment will become effective upon execution of this First Amendment by the Parties.
4. Facility Schedule No. 6 (including the diagrams attached thereto) is deleted in its entirety and Facility Schedule No. 6 attached to this First Amendment is hereby added to the Agreement in lieu thereof.
5. Facility Schedule No. 6 (including the diagrams attached thereto) attached to this First Amendment will become effective upon execution of this First Amendment by the Parties.

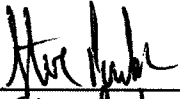
Except as otherwise expressly provided for herein, the Agreement will continue in full force and effect in accordance with its terms.

---The remainder of this page has intentionally been left blank. ---

2

IN WITNESS WHEREOF, the Parties have caused this First Amendment to be executed in several counterparts, each of which shall be deemed an original but all shall constitute one and the same instrument.

SAN MARCOS ELECTRIC UTILITY


By: 

Name: James R. Nuse, P.E.

Asst
Title: City Manager

Date: 4-18-13

LCRA TRANSMISSION SERVICES CORPORATION

By: 

Name: Ray Pfefferkorn, P.E.

Title: LCRA Transmission Engineering Manager

Date: 4/1/13



EXHIBIT A

[illegible]

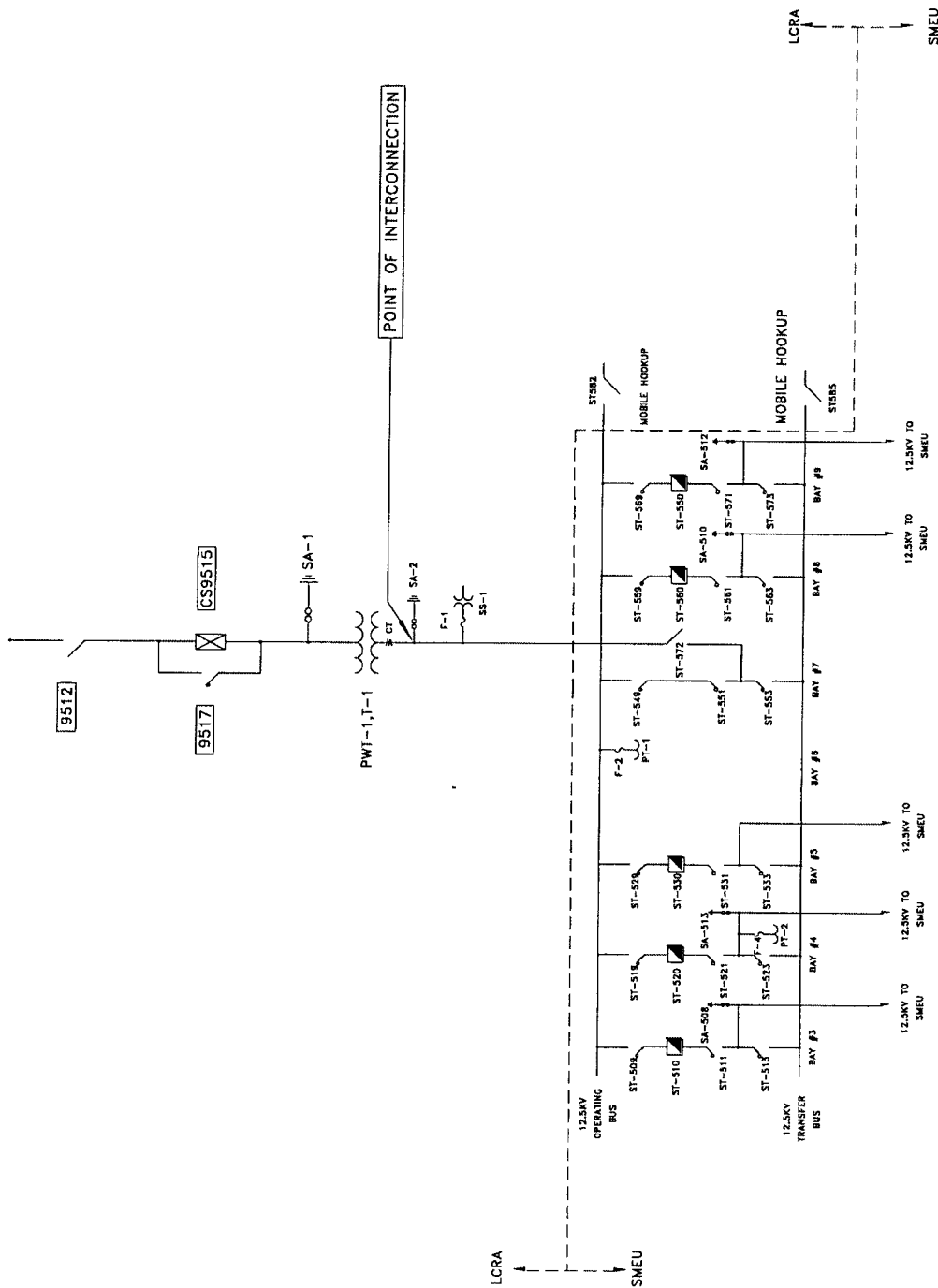
FACILITY SCHEDULE NO. 2

1. **Name:** Strahan Substation
2. **Facility Location:** The Loop 82/Strahan Substation is located at 709 Aquarena Springs Dr. (Loop 82), San Marcos, Hays County, Texas.
3. **Point of Interconnection:** There is one (1) Point of Interconnection in the Strahan Substation: where the 12.5 kV bus terminates at the power transformer T-1 LV bushings.
4. **Transformation Services Provided by LCRA TSC:** Yes
5. **Metering Services Provided by LCRA TSC:** Yes
6. **Delivery Voltage:** 12.5 kV
7. **Metered Voltage and Location:** The metered voltage is 12.5 kV. The metering current transformers are located in T-1. The metering potential transformers are located on the 12.5 kV operating bus.
8. **One Line Diagram Attached:** Yes
9. **Description of Facilities Owned by Each Party:**
 - San Marcos Electric Utilities owns:
 - The site (property), including site work, fence, foundations, and ground grid
 - Five (5) distribution circuit breakers ST-510, ST-520, ST-530, ST-550, ST-560
 - 15 kV (60:1 ratio) bus potential transformers
 - Six (6) distribution and total bays including A-frames, trusses, insulators, disconnect switches, surge arresters, 12.5 kV operating and transfer bus, bus potential transformers and metering current transformers
 - Control house with station battery
 - LCRA TSC owns:
 - One (1) power transformer T-1 with associated surge arresters
 - One (1) 138 kV circuit switcher CS-9515 with bypass switch 9517 and disconnect switch 9512
 - Two (2) mobile transformer disconnect switches ST-582 and ST-585 on the ends of the 12.5 kV operating and transfer buses
 - Station Service equipment
10. **Operational Responsibilities of Each Party:** Each Party will be responsible for the operation of the equipment it owns.
11. **Maintenance Responsibilities of Each Party:** Each Party will be fully responsible for

the maintenance of the equipment it owns.

12. **Other Terms and Conditions:** The City and LCRA TSC are to share access to the substation by LCRA TSC locks in the gate and in the control house doors.

STRAHAN ONE-LINE DIAGRAM



STRAHAN SUBSTATION
THIS IS NOT A COMPLETE ONE-LINE DIAGRAM
FOR A COMPLETE ONE-LINE DIAGRAM OF THIS
SUBSTATION, REFER TO DRAWING S439-E-0001-01.

7

FACILITY SCHEDULE NO. 6

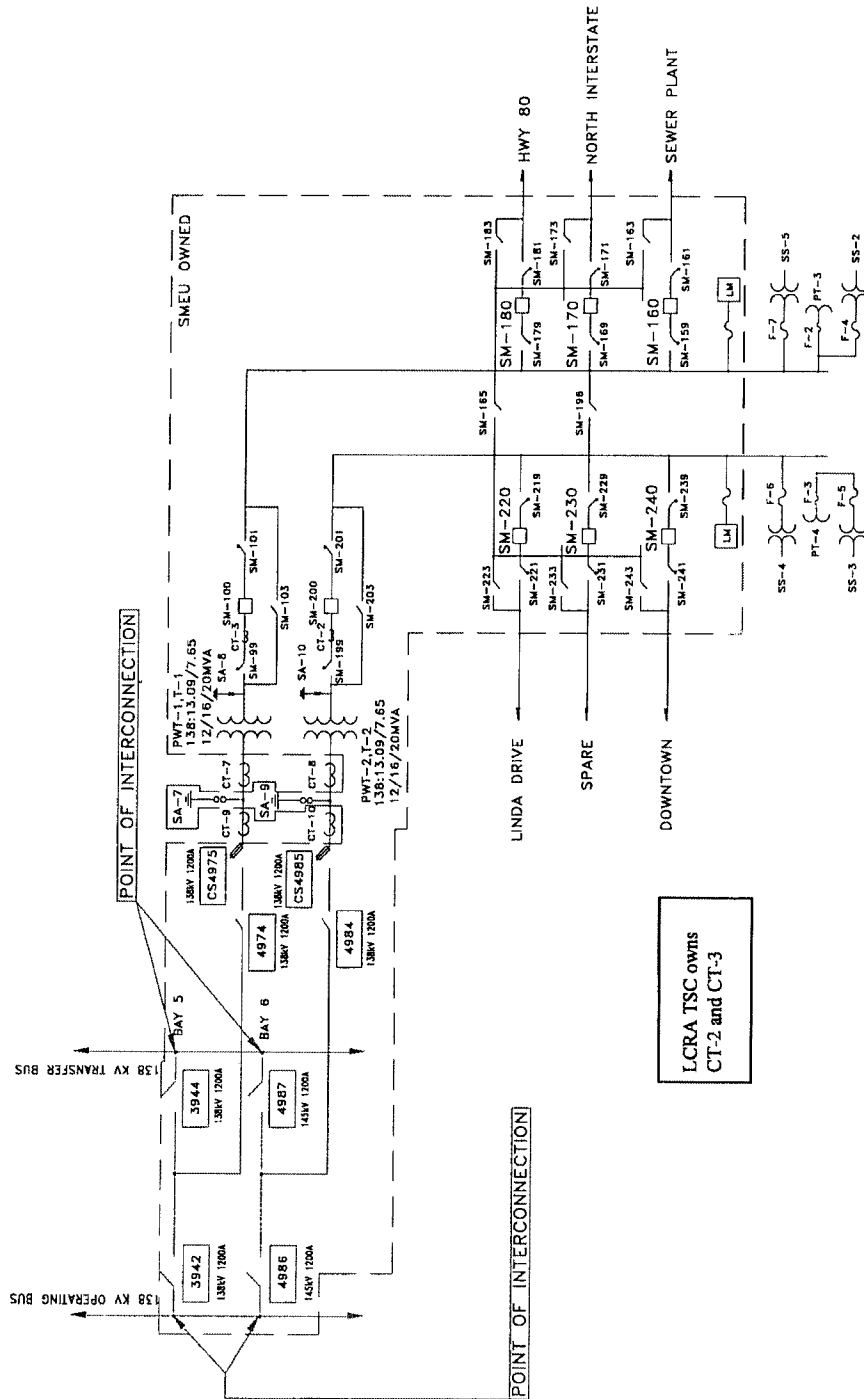
1. **Name:** San Marcos Substation
2. **Facility Location:** The San Marcos Substation is located at 1301 River Road, San Marcos, Hays County, Texas.
3. **Points of Interconnection:** There are four (4) points of interconnection at San Marcos Substation generally described as:
 - where the jumper from switch 3942 on the transformer bus for power transformer PWT-1 connects to the 138 kV main bus.
 - where the jumper from switch 3944 on the transformer bus for power transformer PWT-1 connects to the 138 kV transfer bus.
 - where the jumper from switch 4986 on the transformer bus for power transformer PWT-2 connects to the 138 kV main bus.
 - where the jumper from switch 4987 on the transformer bus for power transformer PWT-2 connects to the 138 kV transfer bus.
4. **Transformation Services Provided by LCRA TSC:** No
5. **Metering Services Provided by LCRA TSC:** Yes
6. **Delivery Voltage:** 138 kV
7. **Metered Voltage and Location:** The metered voltage is 12.5 kV. The metering current transformers are located in the 12.5 kV total bays for the two power transformers (PWT-1 and PWT-2). The metering potential transformers are located on the respective 12.5 kV operating buses.
8. **One Line Diagram Attached:** Yes
9. **Description of Facilities Owned by Each Party:**
 - San Marcos Electric Utilities owns: Two (2) transformers PWT-1, T-1 and PWT-2, T-2
 - Two (2) circuit switchers CS-4975 and CS-4985 and 138 kV disconnect switches 4974, 3942, 3944, 4984, 4986 and 4987.
 - 138 kV transformer bus with associated steel structures and insulators
 - Six (6) distribution circuit breakers SM-160, SM-170, SM-180, SM-220, SM-230, SM-240
 - Two (2) total circuit breakers SM-100 and SM-200
 - Eight (8) distribution and total bays including A-frames, trusses, insulators, disconnect switches, surge arresters, 12.5 kV operating and transfer bus, bus and potential transformers

LCRA TSC owns:

- The site (property), including site work, fence, foundations, and ground grid
- 138 kV operating and transfer bus
- 12.5 kV and 138 kV bus potential transformers
- Four (4) Relaying current transformers CT-7, CT-8, CT-9 and CT-10
- Metering current transformers CT-2 and CT-3
- Underfrequency relay panel
- Control house and station battery
- Station Service equipment

10. **Operational Responsibilities of Each Party:** Each Party will be responsible for the operation of the equipment it owns.
11. **Maintenance Responsibilities of Each Party:** Each Party will be fully responsible for the maintenance of the equipment it owns.
12. **Other Terms and Conditions:** The City and LCRA TSC are to share access to the substation by LCRA TSC locks in the gate and in the control house doors.

SAN MARCOS ONE-LINE DIAGRAM



SAN MARCOS SUBSTATION

THIS IS NOT A COMPLETE ONE-LINE DIAGRAM
FOR A COMPLETE ONE-LINE DIAGRAM OF THIS
SUBSTATION, REFER TO DWG. S179-E-1.