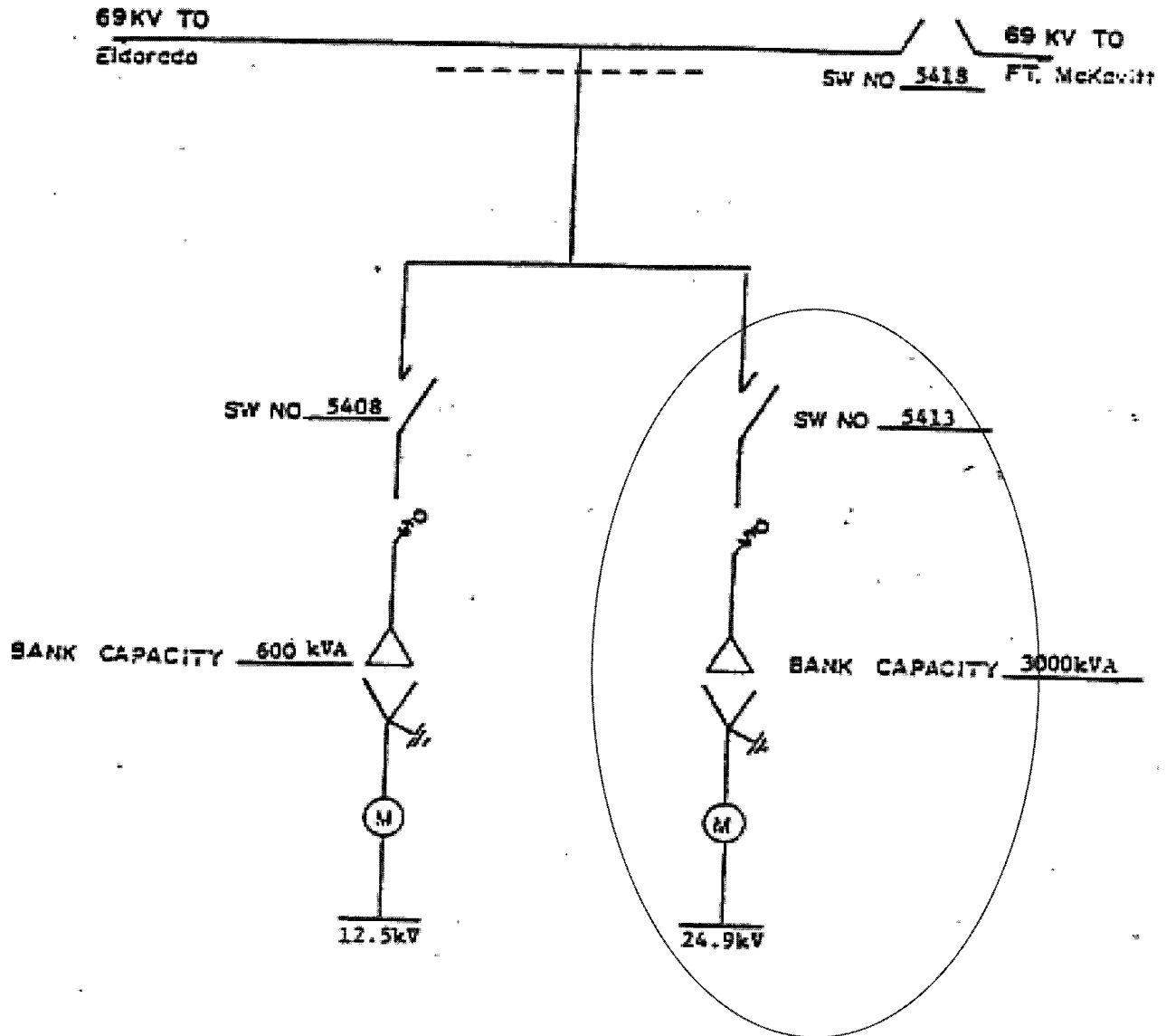


FACILITY SCHEDULE NO. 12

1. Name: **Middle Valley 24.9**
2. Facility Location: Point of Interconnection is inside Cooperative's substation on 24.9 kV side of the transformer banks
3. Voltage at Point of Interconnection: 69.0 kV
4. Metered Voltage: 24.9 kV
5. Loss Adjustment Due To Meter Location: No
6. Normal Operation of Interconnection: Closed
7. One-Line Diagram Attached: Yes
8. Description of Facilities Installed and Owned by Each Party:
9. Operation Responsibilities of Each Party:
 - Each Party operates the facilities it owns.
10. Maintenance Responsibilities of Each Party:
 - Each Party maintains the facilities it owns.
11. Maximum Contract Demand: 570 kW
12. Other Terms and Conditions:
 - Company is to have access to switch #5413
 - PT & CT sold to Cooperative

Middle Valley Substation

ONE LINE DIAGRAM FOR EXHIBIT A



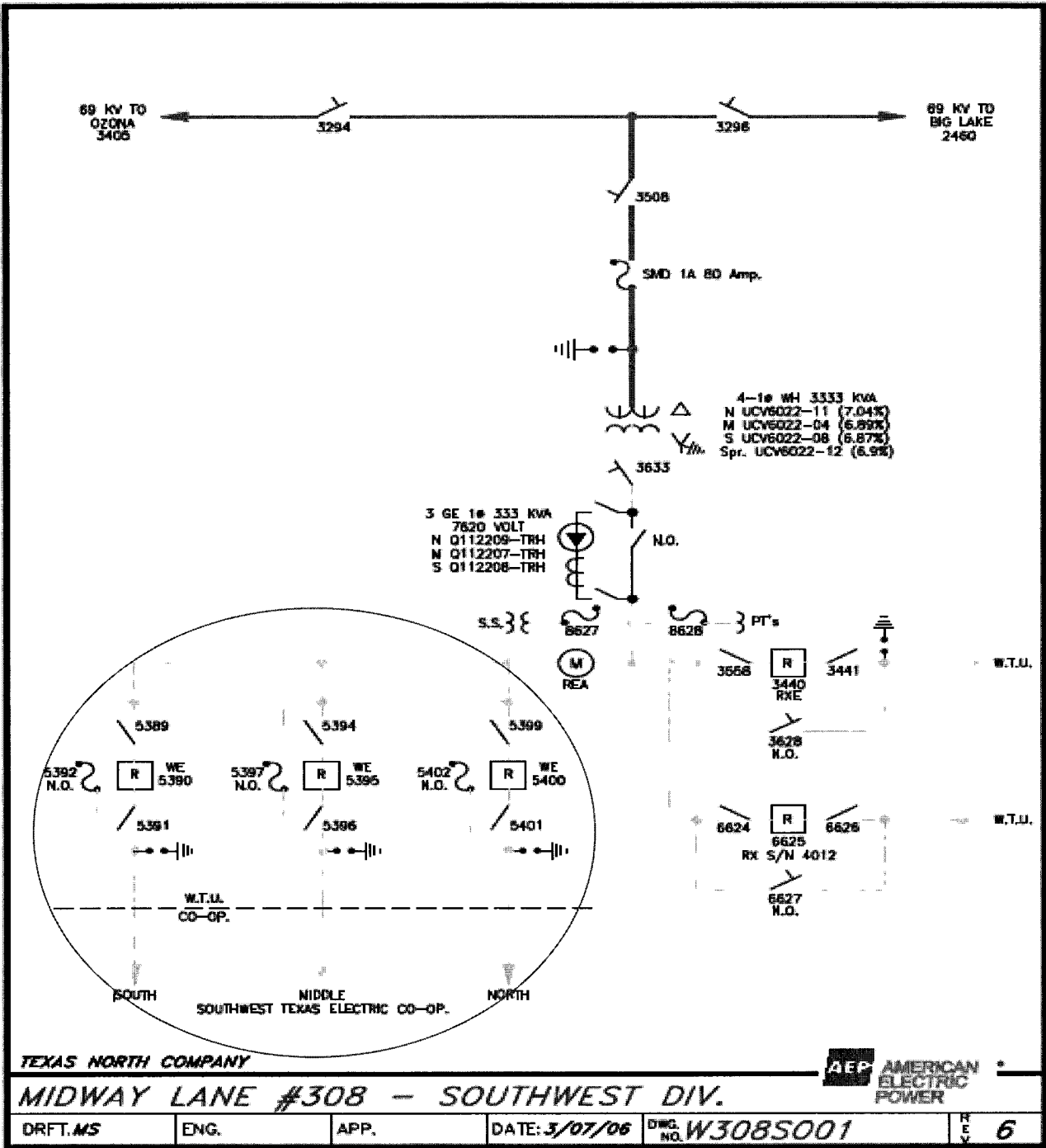
1. Dashed line indicates point of change in ownership.
2. West Texas Utilities is to have access to switches # 5408 and # 5413 .

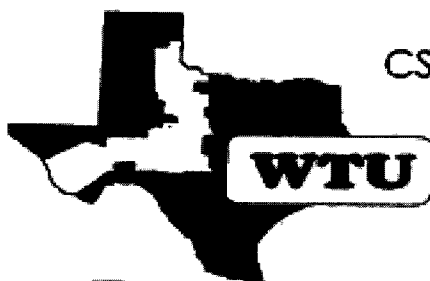
FACILITY SCHEDULE NO. 13

1. Name: **Midway Lane**

2. Facility Location: Point of Interconnection is inside Company Midway Lane substation south from Big Lake, TX on Highway 137, then east three (3) miles on Highway 190. Substation is one-hundred (100) yards south of Highway 190, Crockett County.

3. Voltage at Point of Interconnection: 12.5 kV
4. Metered Voltage: 12.5 kV
5. Loss Adjustment Due To Meter Location: No
6. Normal Operation of Interconnection: Closed
7. One-Line Diagram Attached: Yes
8. Description of Facilities Installed and Owned by Each Party:
9. Operation Responsibilities of Each Party:
 - See Operating Agreement for Midway Lane Cooperative Point of Delivery July 30, 1999 (AFTER ONE-LINE DIAGRAM BELOW).
10. Maintenance Responsibilities of Each Party:
 - Each Party maintains the facilities it owns.
11. Maximum Contract Demand: 5,832 kW
2. Other Terms and Conditions:
 - Cooperative is to have access to OCR 5390, 5395 and 5400 and load side disconnect switches 5391, 5396, and 5401





CSW Transmission & Distribution Operations
Dispatch Operations - WTU

Subject: Southwest Texas Electric Co-op – Midway Lane Point of Delivery Operating Procedure

**OPERATING AGREEMENT FOR MIDWAY LANE SWTEC POINT OF DELIVERY
July 30, 1999 (supersedes all previous operating agreements)**

SOUTH WEST TEXAS ELECTRIC COOPERATIVE

1. Southwest Texas Electric Cooperative (SWTEC) shall have access to West Texas Utilities Company's (WTU) Midway Lane Substation to operate OCR 5390, 5395, and 5400 and line side disconnects 5391, 5396, and 5401.
2. SWTEC may operate OCR 5390, 5395, and 5400 using the operator on each recloser.
3. If SWTEC closes the recloser after the recloser is locked out, WTU's Dispatch Operations Dispatcher shall be notified in a timely manner.
4. SWTEC may operate line-side disconnect switches 5391, 5396, and 5401 after obtaining switching instructions from WTU's Dispatch Operations.
5. If SWTEC takes a planned clearance on this circuit, WTU's Dispatch Operations shall be notified in advance of the clearance.
6. SWTEC shall notify WTU's Dispatch Operations of the times when a switch or recloser in the substation was operated.

WEST TEXAS UTILITIES COMPANY

1. WTU shall notify SWTEC of any planned outages or work at the Midway Lane Substation prior to the time that work is to be done.
2. WTU shall not close OCR's 5390, 5395, and 5400 to pick up load without specific instructions from SWTEC to do so.
3. WTU shall not transfer load to another recloser without first notifying SWTEC of the planned transfer.
4. WTU shall make provisions for SWTEC to access the Midway Lane Substation.

Subject: Southwest Texas Electric Co-op - Midway Lane Point of Delivery Operating Procedure

OPERATING AGREEMENT FOR MIDWAY LANE SWTEC POINT OF DELIVERY
July 30, 1999 (supersedes all previous operating agreements)

IN WITNESS WHEREOF, COMPANY and Customer have caused this Agreement to be executed in duplicate in their names by their respective duly authorized representatives as of the date and year first above written.

SOUTHWEST TEXAS ELECTRIC COOPERATIVE, INC.

CUSTOMER

ATTEST:

Jack Williams

By: William W. Whitten
General Manager

WEST TEXAS UTILITIES COMPANY

COMPANY

ATTEST:

Martha Murray

By: Paul H. Fuster P.E.
Director, Transmission & Distribution
Operations

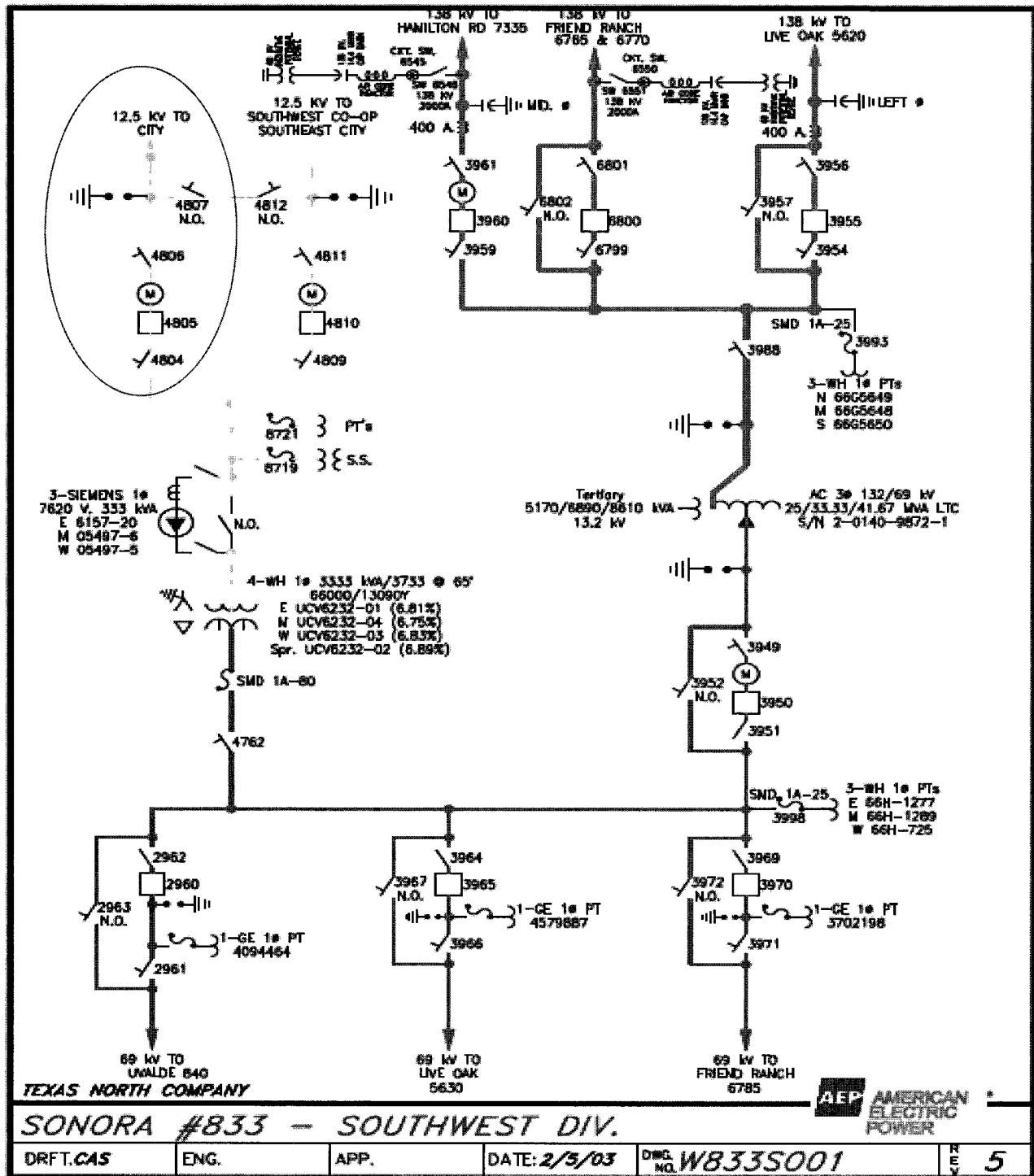
FACILITY SCHEDULE NO. 14

1. Name: **North Sonora**

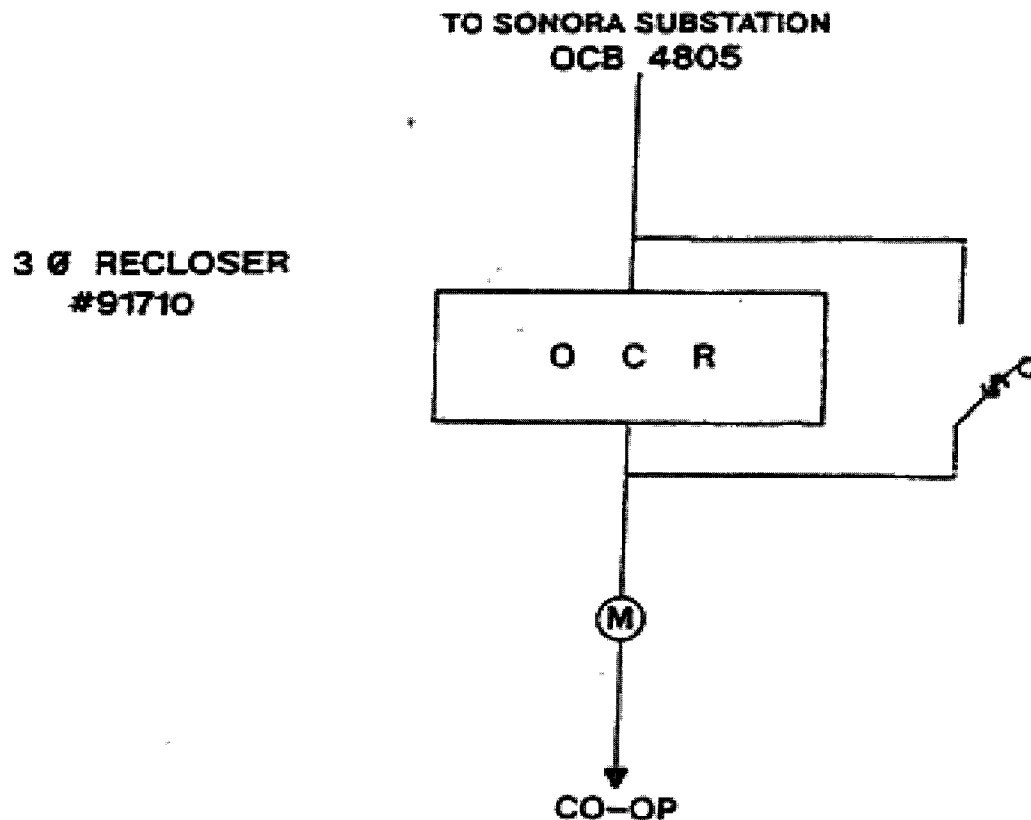
2. Facility Location: Point of Interconnection is at the north end of the Company's 12.5 kV, 3 phase power line which terminates at the Company/Cooperative - Cooperative certification boundary three and a half (3.5) mi. north of Sonora, TX, and one and a half (1.5) miles west of Highway 277 in Sutton County

3. Voltage at Point of Interconnection: 12.5 kV
4. Metered Voltage: 12.5 kV
5. Loss Adjustment Due To Meter Location: No
6. Normal Operation of Interconnection: Closed
7. One-Line Diagram Attached: Yes
8. Description of Facilities Installed and Owned by Each Party:
9. Operation Responsibilities of Each Party:
 - Each Party operates the facilities it owns.
10. Maintenance Responsibilities of Each Party:
 - Each Party maintains the facilities it owns.
11. Maximum Contract Demand: 340 kW

3. Other Terms and Conditions:
 - Cooperative is to have access to OCR #R91710



SOUTHWEST TEXAS ELECTRIC CO-OP NORTH SONORA METER POINT



1. SOUTHWEST TEXAS ELECTRIC CO-OP IS TO HAVE ACCESS TO OCR #91710.
2. OCR #91710 WILL BE INSTALLED ONE SPAN SOUTH OF THE METER POINT ON A WTU POLE.

LOCATION: AT THE NORTH END OF A WEST TEXAS UTILITIES 12.5 KV, 3 PHASE POWER LINE WHICH TERMINATES AT THE WTU/SWTEC - SWTEC CERTIFICATION BOUNDARY 3 1/2 ME. NORTH OF SONORA AND 1/2 MI. WEST OF HWY 277 IN SUTTON COUNTY.

FACILITY SCHEDULE NO. 15

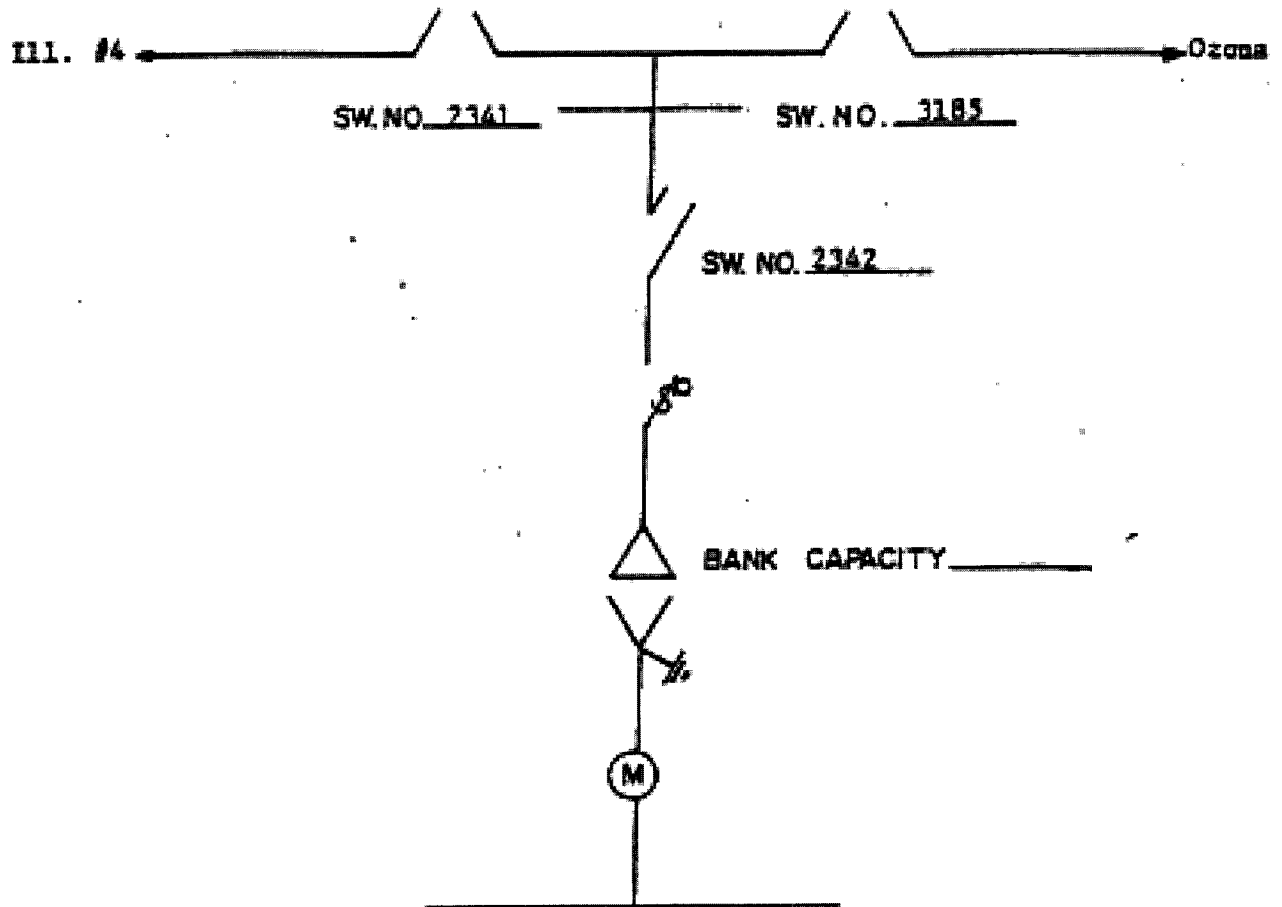
1. Name: **Ozona**

2. Facility Location: Point of Interconnection is in Cooperative's Ozona substation, three (3) miles west of Ozona, TX, and four-tenths (.4) mile north of Highway 10, Crockett County.

3. Voltage at Point of Interconnection: 69.0 kV
4. Metered Voltage: 12.5 kV
5. Loss Adjustment Due To Meter Location: No
6. Normal Operation of Interconnection: Closed
7. One-Line Diagram Attached: Yes
8. Description of Facilities Installed and Owned by Each Party:
9. Operation Responsibilities of Each Party:
 - Each Party operates the facilities it owns.
10. Maintenance Responsibilities of Each Party:
 - Each Party maintains the facilities it owns.
11. Maximum Contract Demand: 616 kW
12. Other Terms and Conditions:
 - Company is to have access to switch 2342
 - PT & CT sold to Cooperative

Ozona

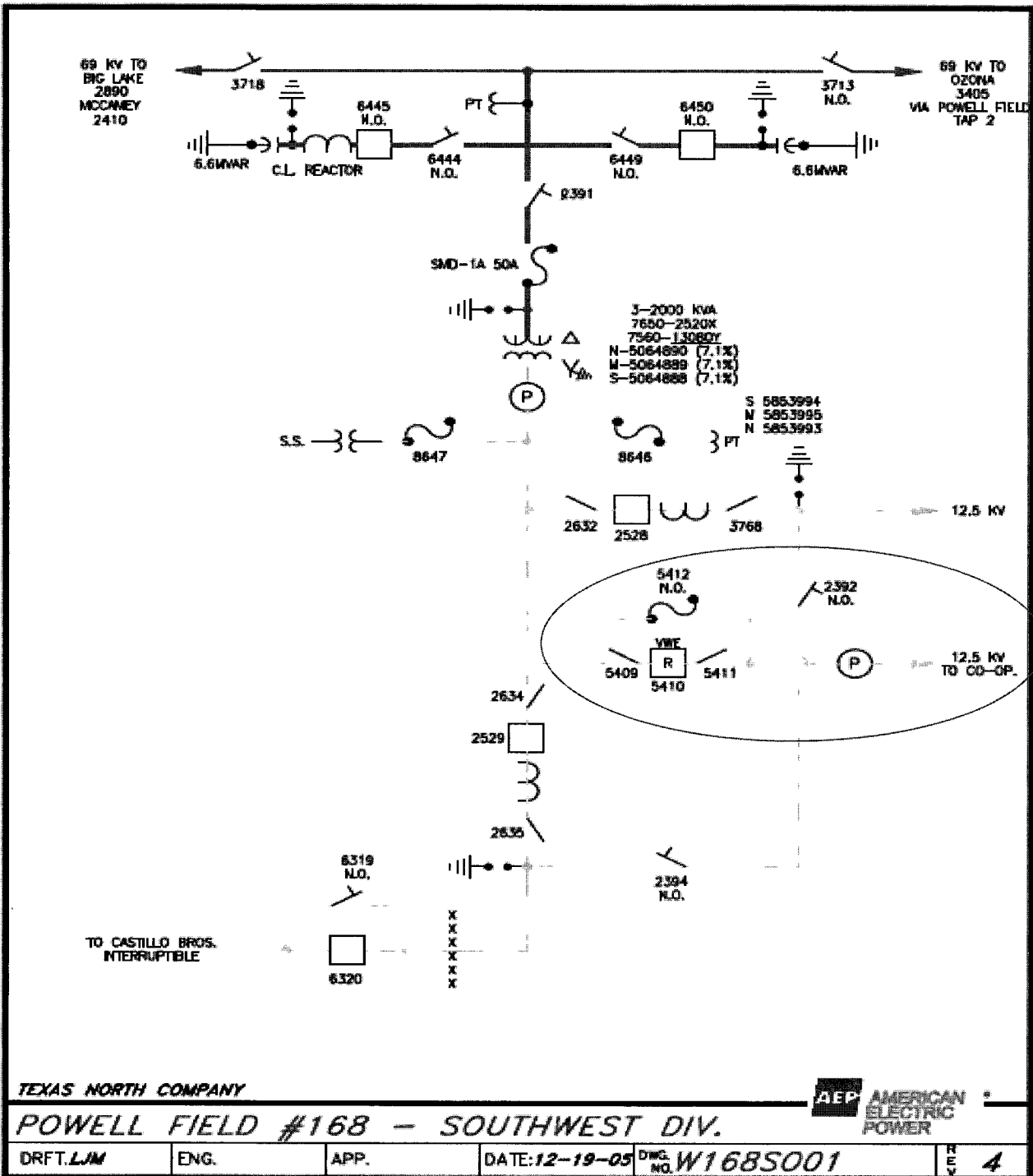
ONE LINE DIAGRAM FOR EXHIBIT A



1. West Texas Utilities Co. is to have access to bank switch #2342.
2. Dashed line indicates change of ownership.

FACILITY SCHEDULE NO. 16

1. Name: **Powell Field**
2. Facility Location: Point of Interconnection is on primary meter pole approximately one hundred twenty-five (125) feet southwest of Company's Power Field substation which is located west from Big Lake, TX, for four (4) miles on US 67, then south from US 67 on Ranch 1676 Spur county road for 13 miles, Crockett County.
3. Voltage at Point of Interconnection: 12.5 kV
4. Metered Voltage: 12.5 kV
5. Loss Adjustment Due To Meter Location: No
6. Normal Operation of Interconnection: Closed
7. One-Line Diagram Attached: Yes
8. Description of Facilities Installed and Owned by Each Party:
9. Operation Responsibilities of Each Party:
 - Each Party operates the facilities it owns.
10. Maintenance Responsibilities of Each Party:
 - Each Party maintains the facilities it owns.
11. Maximum Contract Demand: 1,011 kW
12. Other Terms and Conditions:
 - Cooperative is to have access to OCR 5410 and load side disconnect switch 5411
 - Recloser 5410 is leased from Cooperative

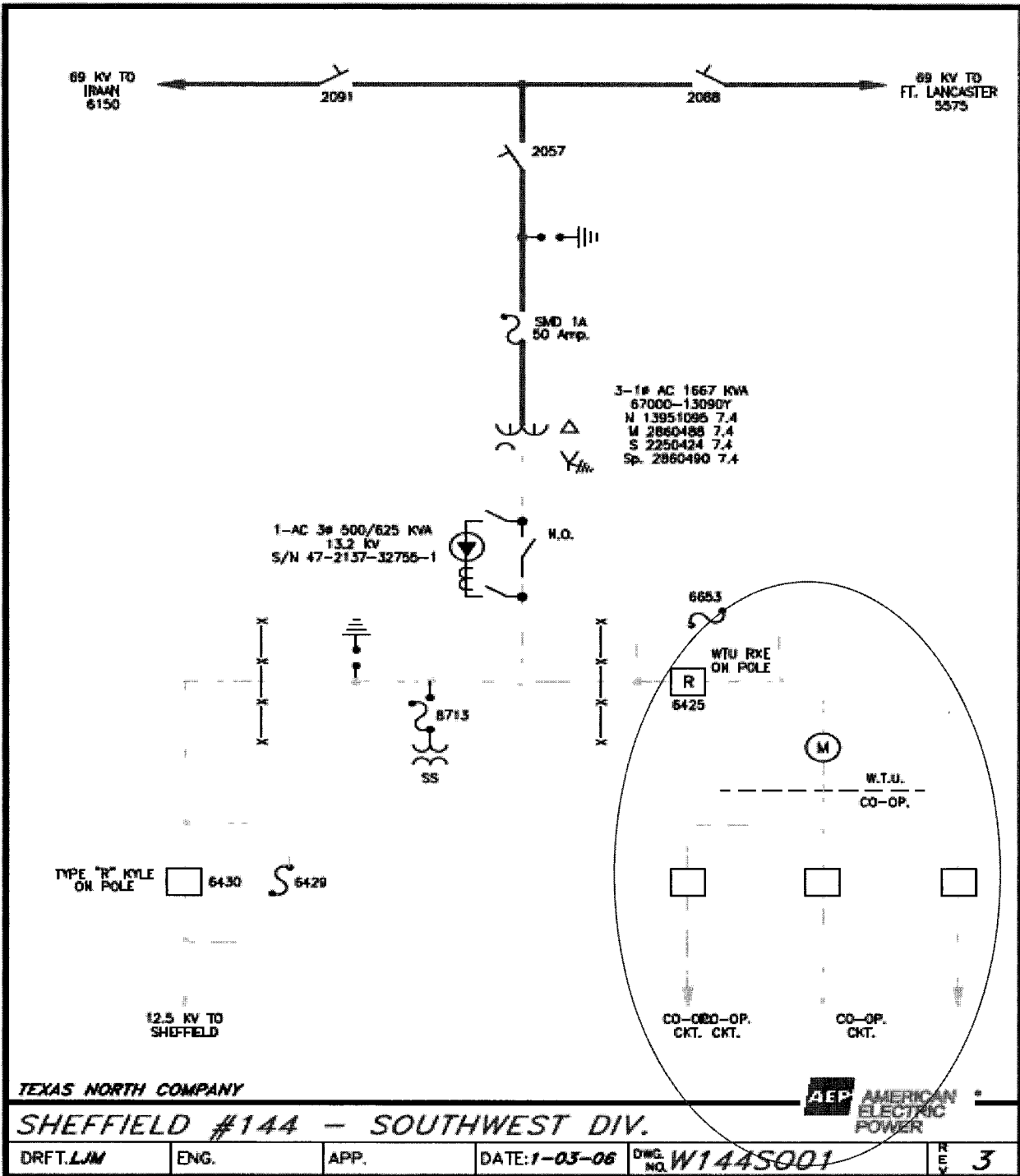


FACILITY SCHEDULE NO. 17

1. Name: **Sheffield**

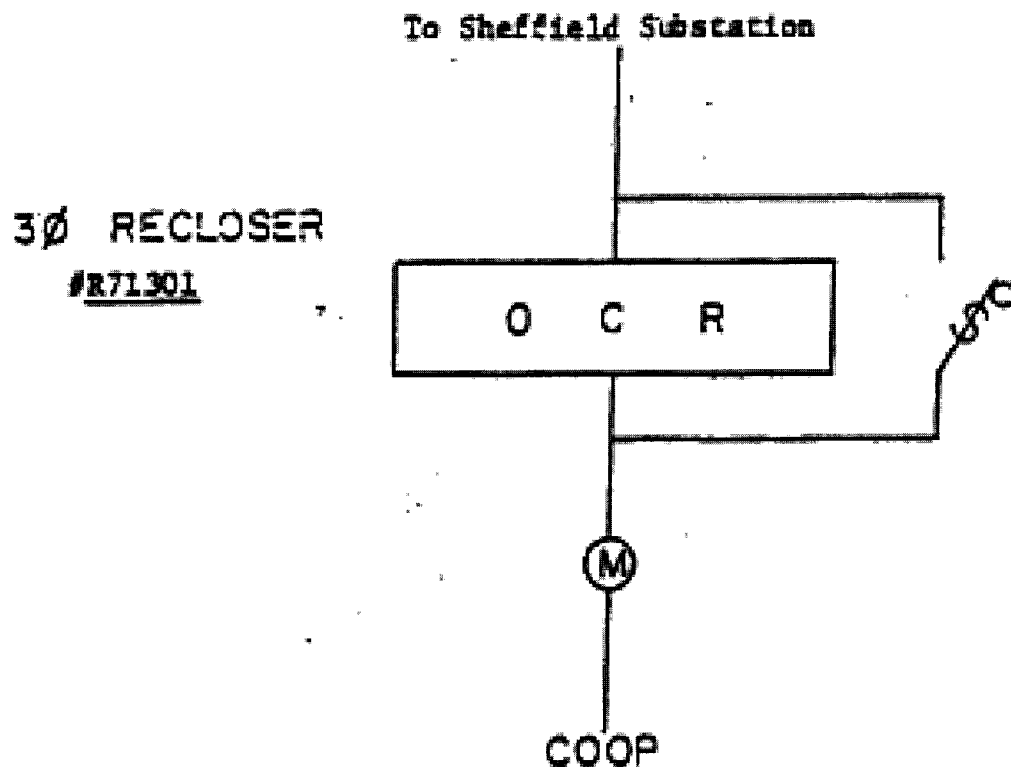
2. Facility Location: Point of Interconnection is at a meter point outside Company's Sheffield substation on 12.5 kV meter pole, Pecos County.

3. Voltage at Point of Interconnection: 12.5 kV
4. Metered Voltage: 12.5 kV
5. Loss Adjustment Due To Meter Location: No
6. Normal Operation of Interconnection: Closed
7. One-Line Diagram Attached: Yes
8. Description of Facilities Installed and Owned by Each Party:
9. Operation Responsibilities of Each Party:
 - Each Party operates the facilities it owns.
10. Maintenance Responsibilities of Each Party:
 - Each Party maintains the facilities it owns.
11. Maximum Contract Demand: 2,430 kW
12. Other Terms and Conditions:
 - Cooperative is to have access to OCR R71301



SHEFFIELD SUB

ONE LINE DIAGRAM FOR EXHIBIT A



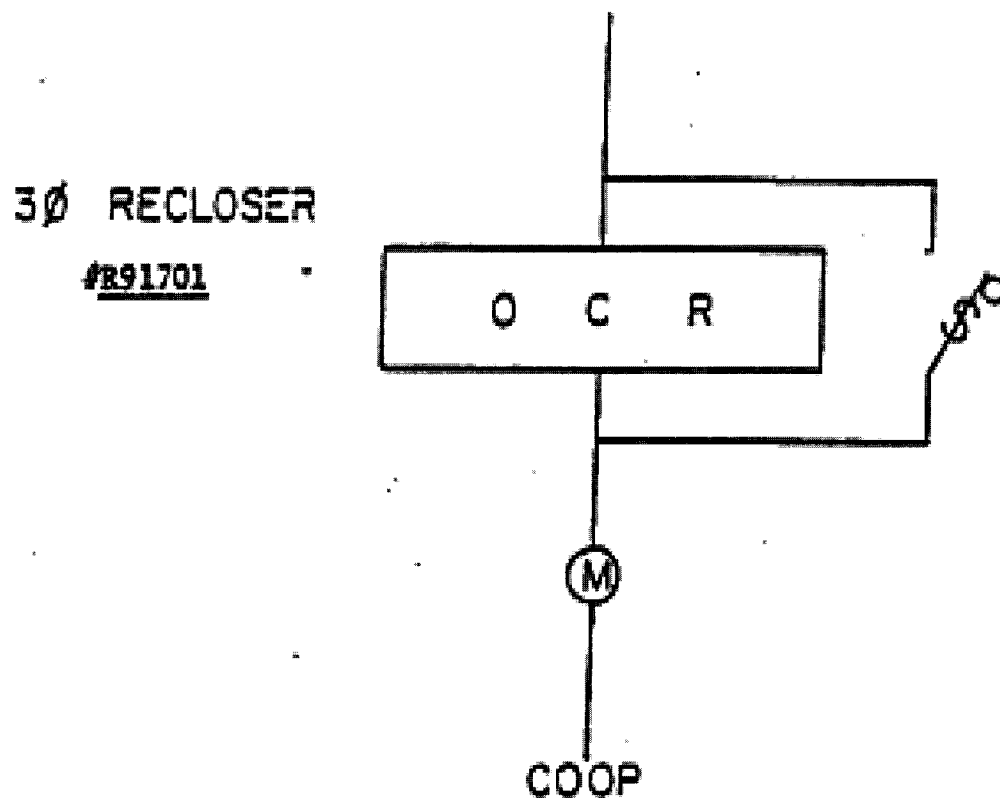
1. Southwest Texas Electric Co-op is to have access to OCR #R71301.
2. OCR #R71301 is a proposed facility that will be installed at the meter point.

FACILITY SCHEDULE NO. 18

1. Name: **Sonora**
2. Facility Location: Point of Interconnection is near the south edge of Sonora, 1/4 mile off Highway 277 on the east side.
3. Voltage at Point of Interconnection: 12.5 kV
4. Metered Voltage: 12.5 kV
5. Loss Adjustment Due To Meter Location: No
6. Normal Operation of Interconnection: Closed
7. One-Line Diagram Attached: Yes
8. Description of Facilities Installed and Owned by Each Party:
9. Operation Responsibilities of Each Party:
 - Each Party operates the facilities it owns.
10. Maintenance Responsibilities of Each Party:
 - Each Party maintains the facilities it owns.
11. Maximum Contract Demand: 1,412 kW
12. Other Terms and Conditions:
 - Cooperative is to have access to OCR R91701

SONORA 138/69/12 KV

ONE LINE DIAGRAM FOR EXHIBIT A



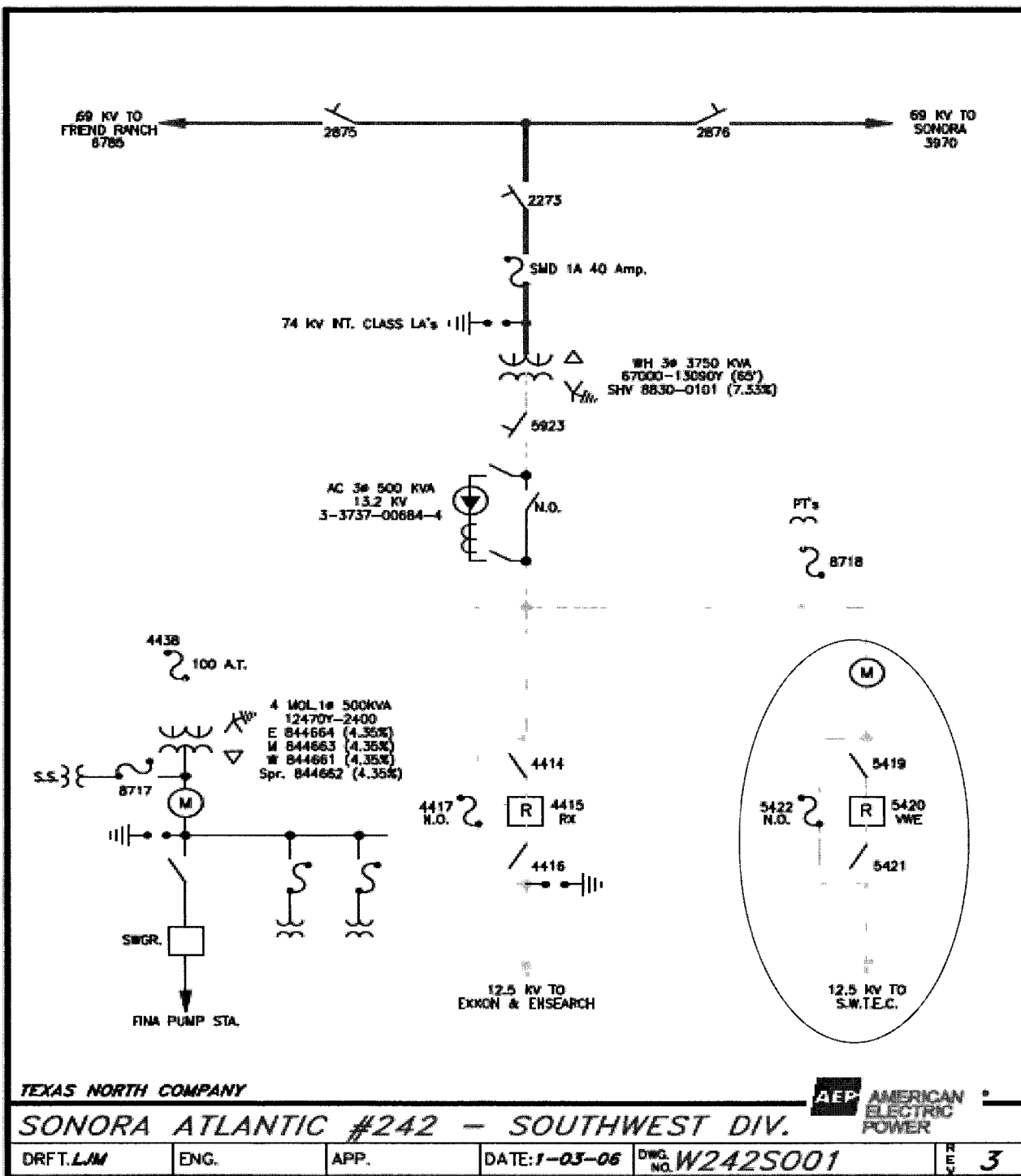
1. Southwest Texas Electric Co-op is to have access to OCR #R91701.
2. OCR #R91701 is a proposed facility that is to be installed at the meter point.

FACILITY SCHEDULE NO. 19

1. Name: **Sonora Atlantic**

2. Facility Location: Point of Interconnection is in Company's Atlantic Sonora substation, twelve (12) miles west of Sonora, TX, Sutton County, on Old Sonora to Ozona Highway 290

3. Voltage at Point of Interconnection: 12.5 kV
4. Metered Voltage: 12.5 kV
5. Loss Adjustment Due To Meter Location: No
6. Normal Operation of Interconnection: Closed
7. One-Line Diagram Attached: Yes
8. Description of Facilities Installed and Owned by Each Party:
9. Operation Responsibilities of Each Party:
 - Each Party operates the facilities it owns.
10. Maintenance Responsibilities of Each Party:
 - Each Party maintains the facilities it owns.
11. Maximum Contract Demand: 920 kW
12. Other Terms and Conditions:
 - Cooperative is to have access to OCR 5420 and load side disconnect switch 5421

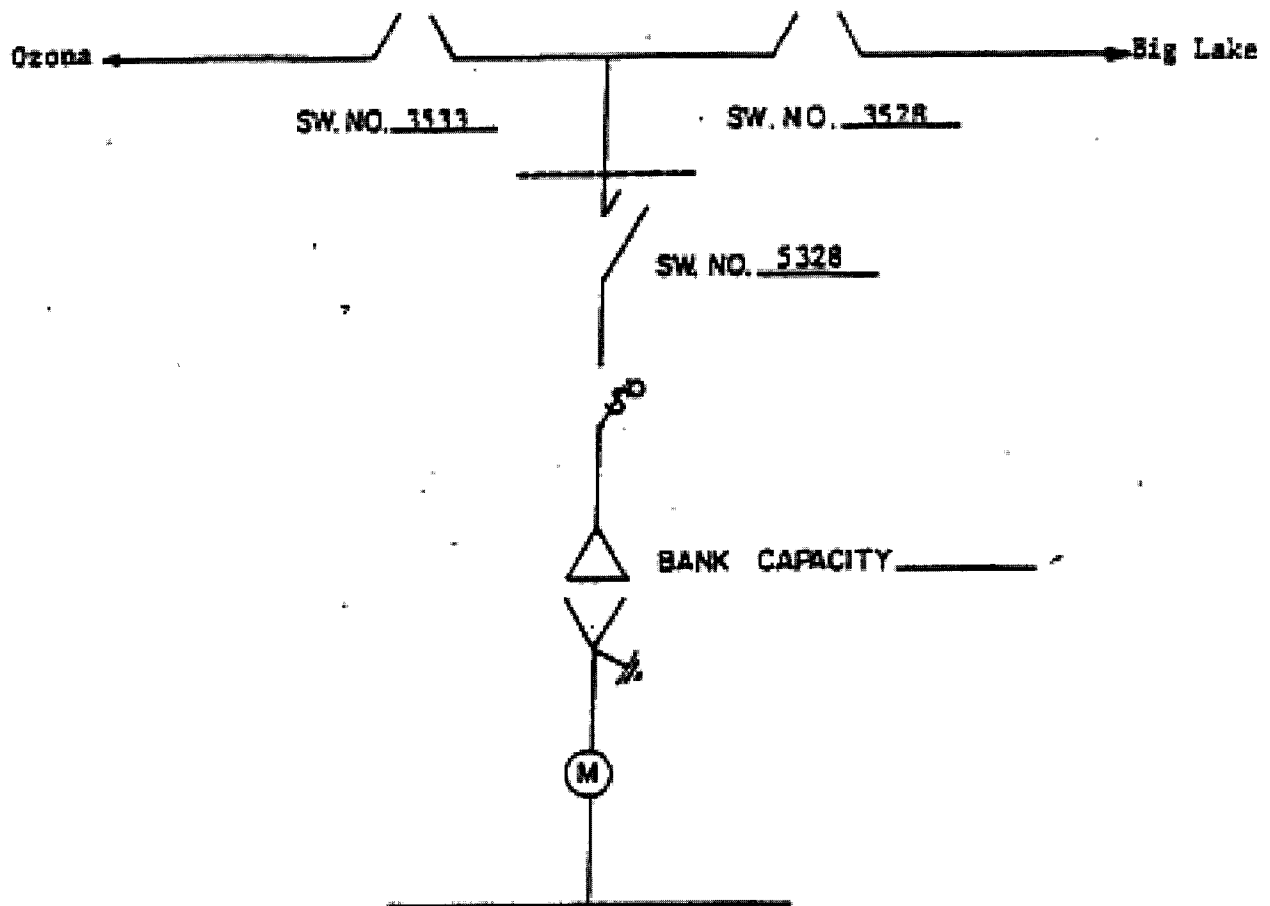


FACILITY SCHEDULE NO. 20

1. Name: **Strauss Ranch**
2. Facility Location: Point of Interconnection is in Company's Atlantic Sonora substation, twelve (12) miles west of Sonora, TX, Sutton County, on Old Sonora to Ozona Highway 290
3. Voltage at Point of Interconnection: 69.0 kV
4. Metered Voltage: 12.5 kV
5. Loss Adjustment Due To Meter Location: No
6. Normal Operation of Interconnection: Closed
7. One-Line Diagram Attached: Yes
8. Description of Facilities Installed and Owned by Each Party:
9. Operation Responsibilities of Each Party:
 - Each Party operates the facilities it owns.
10. Maintenance Responsibilities of Each Party:
 - Each Party maintains the facilities it owns.
11. Maximum Contract Demand: 2,080 kW
12. Other Terms and Conditions:
 - Company is to have access to switch 5328
 - PT & CT sold to Cooperative

Strauss

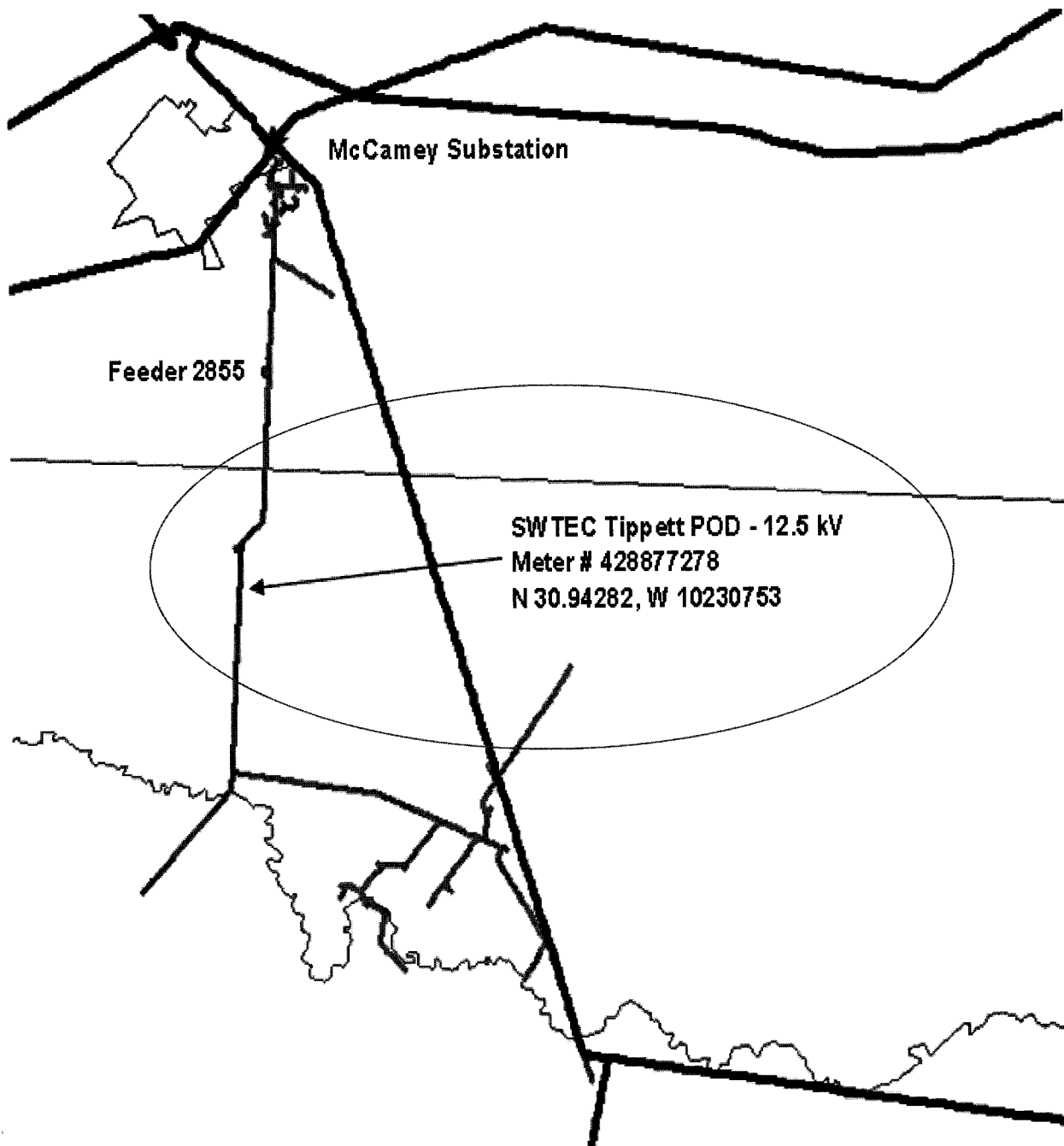
ONE LINE DIAGRAM FOR EXHIBIT A



1. WTC is to have access to bank switch #5328.
2. Dashed line indicates change of ownership.

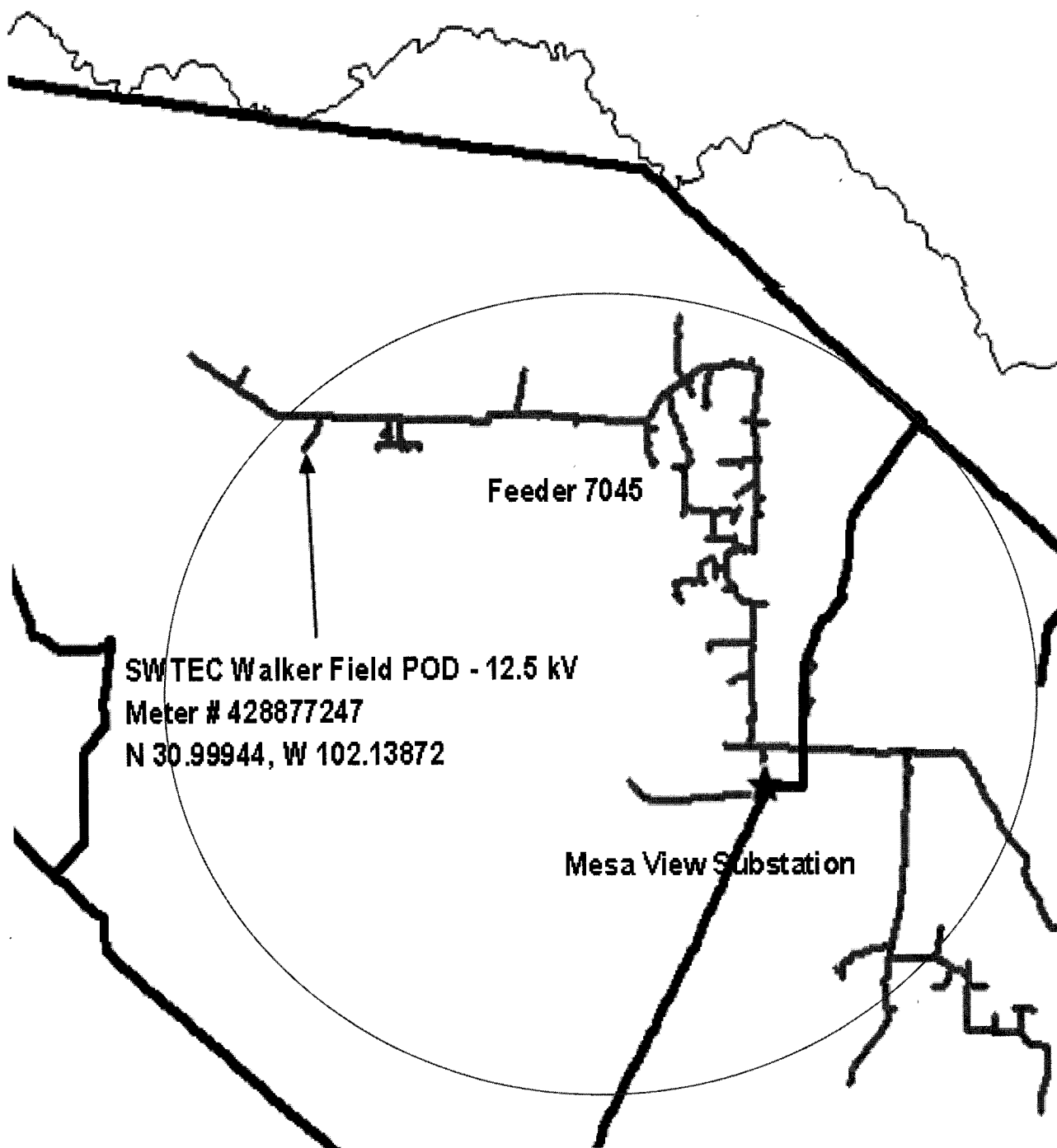
FACILITY SCHEDULE NO. 21

1. Name: **Tippett/McCamey**
2. Facility Location: Point of Interconnection is approximately ten (10) miles south of McCamey, TX, Pecos County, on Country Road 305
3. Voltage at Point of Interconnection: 12.5 kV
4. Metered Voltage: 12.5 kV
5. Loss Adjustment Due To Meter Location: No
6. Norman Operation of Interconnection: Closed
7. One-Line Diagram Attached: Yes
8. Description of Facilities Installed and Owned by Each Party:
9. Operation Responsibilities of Each Party:
 - Each Party operates the facilities it owns.
10. Maintenance Responsibilities of Each Party:
 - Each Party maintains the facilities it owns.
11. Maximum Contract Demand: 370 kW
12. Other Terms and Conditions:
 - On Primary Substation Rate



FACILITY SCHEDULE NO. 22

1. Name: **Walker Field/Mesa View**
2. Facility Location: Point of Interconnection is approximately fifteen (15) miles south of McCamey, TX, Pecos County, on Highway 305
3. Voltage at Point of Interconnection: 12.5 kV
4. Metered Voltage: 12.5 kV
5. Loss Adjustment Due To Meter Location: No
6. Normal Operation of Interconnection: Closed
7. One-Line Diagram Attached: Yes
8. Description of Facilities Installed and Owned by Each Party:
9. Operation Responsibilities of Each Party:
 - Each Party operates the facilities it owns.
10. Maintenance Responsibilities of Each Party:
 - Each Party maintains the facilities it owns.
11. Maximum Contract Demand: 158 kW
12. Other Terms and Conditions:
 - On Primary Substation Rate



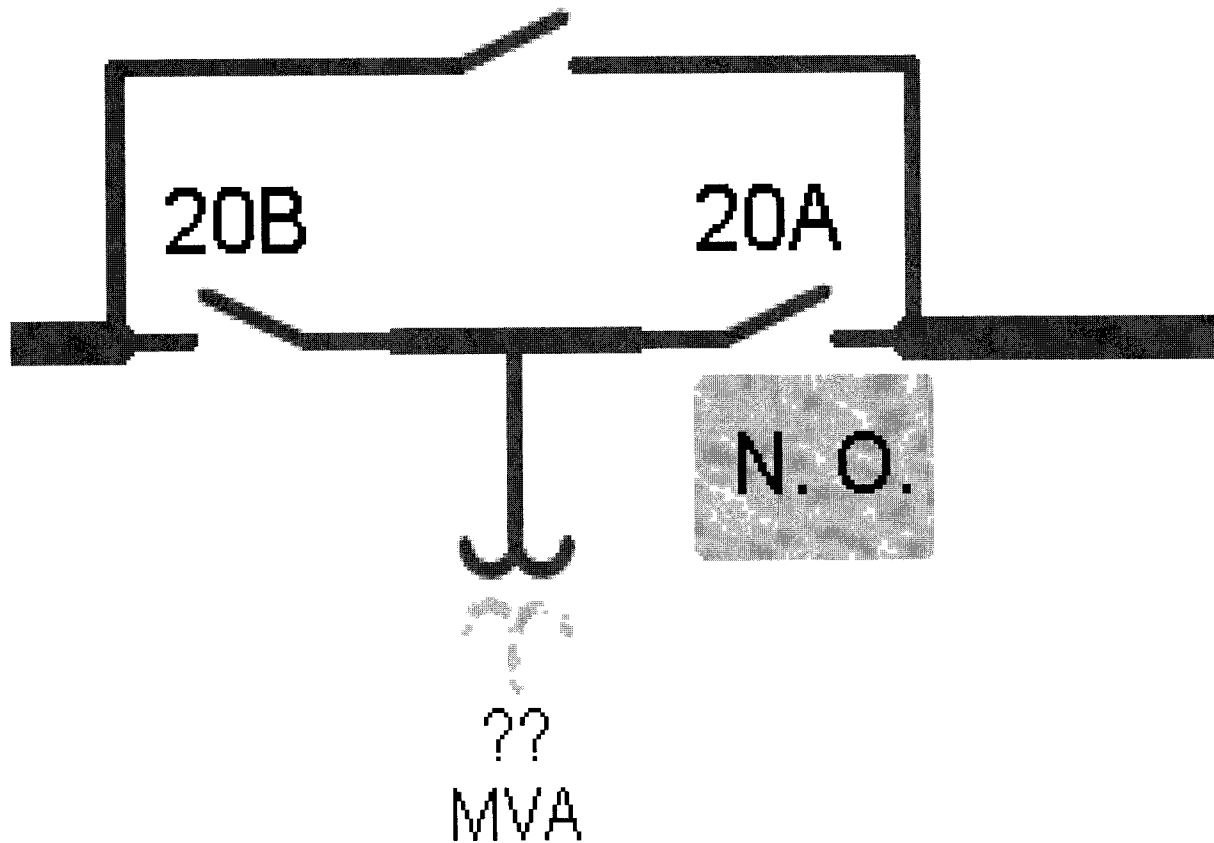
FACILITY SCHEDULE NO. 23

1. Name: **White-Baker**
2. Facility Location: Point of Interconnection is in 12.5 kV bus of Cooperative's White-Baker substation located south of Interstate Highway 10, approximately seven and three tenths (7.3) mile west of Bakersfield, TX, Pecos County
3. Voltage at Point of Interconnection: 69.0 kV
4. Metered Voltage: 12.5 kV
5. Loss Adjustment Due To Meter Location: No
6. Normal Operation of Interconnection: Closed
7. One-Line Diagram Attached: Yes
8. Description of Facilities Installed and Owned by Each Party:
9. Operation Responsibilities of Each Party:
 - Each Party operates the facilities it owns.
10. Maintenance Responsibilities of Each Party:
 - Each Party maintains the facilities it owns.
11. Maximum Contract Demand: 1,853 kW
12. Other Terms and Conditions:
 - PT & CT sold to Cooperative

WHITE BAKER

SWTEC

30



FACILITY SCHEDULE NO. 24

1. Name: **Pecos River**
2. Facility Location: The Pecos River substation is located approximately 8.5 miles north of Sheffield, TX, east of State Road 349, near the intersection of Deer Canyon Rd and River Rd in Sheffield, Texas in Crockett County. The Point of Interconnection is located at the dead-end structure in the Cooperatives Pecos River substation, where the jumper conductors from the Pecos River substation equipment physically contact the connectors on the Company's 69 kV transmission line conductors from the Cactus tap.
3. Voltage at Point of Interconnection: 69 kV
4. Metered Voltage 12.5 kV
5. Loss Adjustment Due To Meter Location: Yes
6. Normal Operation of Interconnection: Closed
7. One-Line Diagram Attached: Yes
8. Description of Facilities Installed and Owned by Each Party:

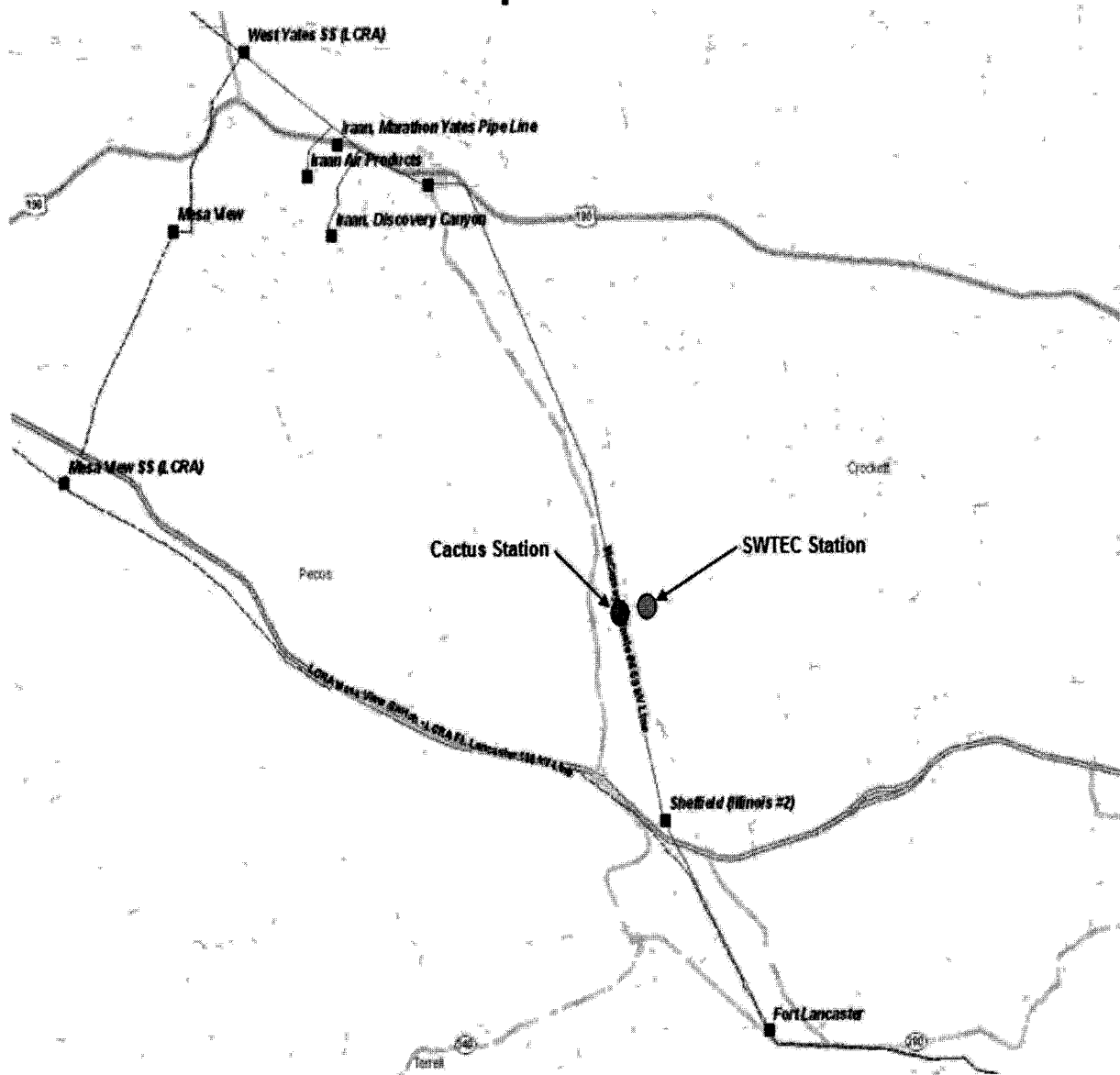
Company:
 - tap structure (Cactus) with three (3) switches in the Ft Lancaster to West Yates 69 kV transmission line
 - construct approximately 4300 feet of 69 kV transmission line from Cactus to Pecos River dead-end substation structure
 - meter and associated meter equipment on the load side of the Pecos River substation transformer.

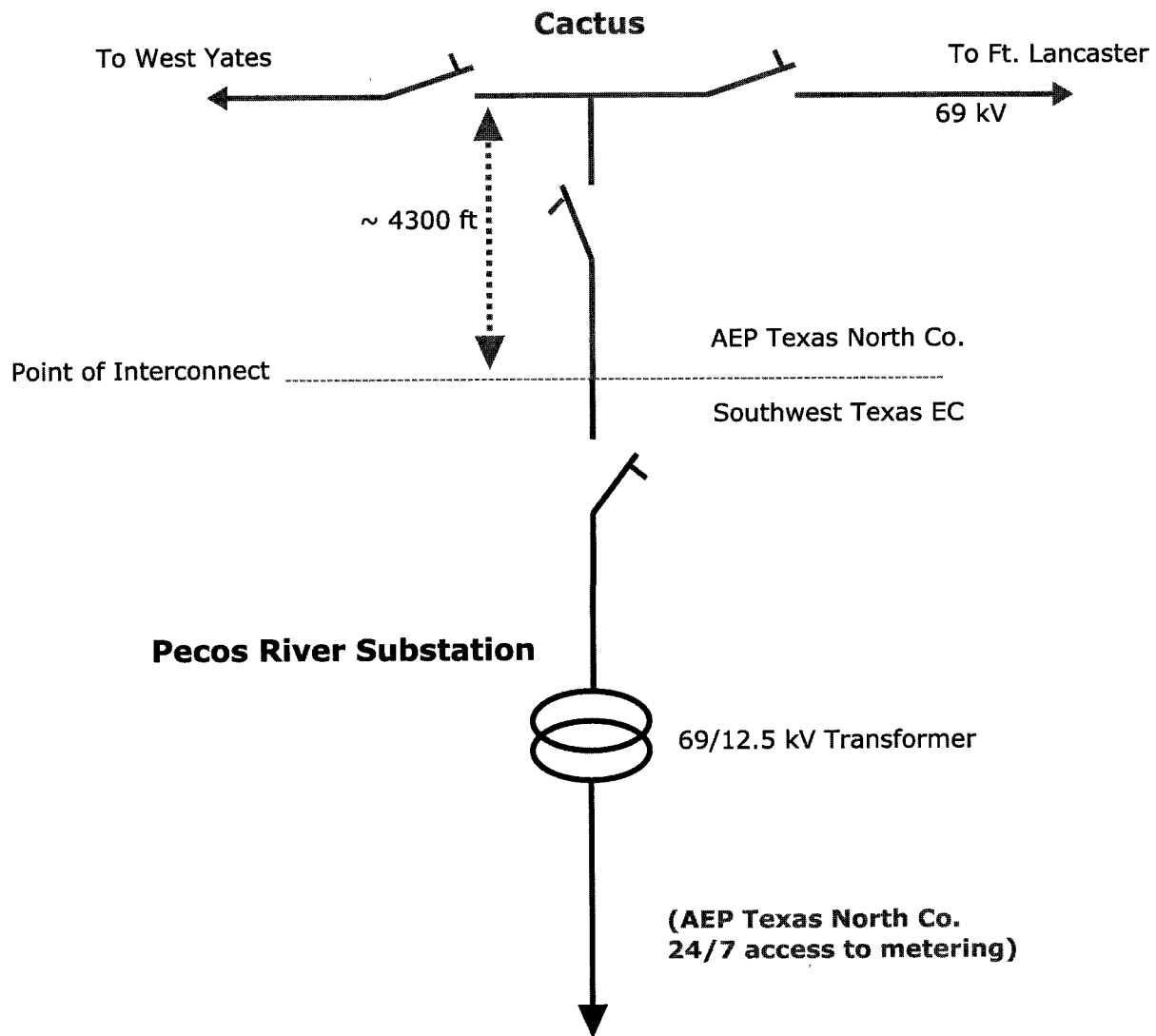
Cooperative:
 - all facilities within the Pecos River substation, except Company's meter and associated meter equipment provided hereinabove
9. Operational Responsibilities of Each Party:
 - Each party will be responsible to operate the facilities it owns
10. Maintenance Responsibilities of Each Party:
 - Each Party is responsible for the maintenance of the facilities it owns
11. Other Terms and Conditions:

Cooperative recognizes that Company is installing the Facilities described hereinabove to facilitate Cooperative's request for a new Point of Interconnection to be provided by this Agreement. If Cooperative cancels its request for this Point of Interconnection prior to

energizing this Point of Interconnection because the Facilities are not required, Cooperative agrees to pay the actual installed costs incurred and committed to be incurred by Company, and the actual costs of removal of the Company material and equipment, that Company determines cannot be recovered through transmission cost of service rates. The total installed cost of the Company Facilities described hereinabove is estimated to be two million eight thousand dollars (\$2,008,000) which Cooperative agrees is reasonable. In the event Cooperative terminates this Point of Interconnection in accordance with Section 4.5, Cooperative shall pay Company the depreciated book value plus removal cost less salvage value of such facilities used to supply Cooperative, or Cooperative may purchase such facilities at depreciated book value provided Cooperative removes or otherwise disconnects such facilities from a direct connection to the Company system.

Map of Area





———— AEP Texas North Co. Facilities
———— Southwest Texas EC Facilities

FACILITY SCHEDULE NO. 25

1. **Name:** Barnhart Phillips
2. **Facility Location:** The Point of Interconnection is located in Crockett County, Texas, approximately 230 circuit feet east of the Barnhart Phillips substation. More specifically, the Point of Interconnection is where the Cooperative's primary conductors terminate on the meter pole.
3. **Delivery Voltage:** 12.5 kV
4. **Metered Voltage:** 12.5 kV
5. **Loss Adjustment Due To Meter Location:** None
6. **Normal Operation of Interconnection:** Closed
7. **One-Line Diagram Attached:** Yes
8. **Facilities Ownership and Installation Responsibilities of the Parties:**
 - A. Company will install and own the following facilities:
 - i. the Barnhart Phillips substation and all the facilities within it
 - ii. approximately 200 feet of 1/0 AAAC of 4 kV distribution feeder
 - iii. approximately 30 feet of 1/0 AAAC of 12.5 kV distribution feeder from the step-up transformers to the Point of Interconnection
 - iv. the (3) 333 kV step-up transformer and pole mounted rack
 - v. the meter pole
 - vi. the metering facilities
 - B. Cooperative will install and own the following facilities:
 - i. the facilities on the load-side of the meter
 - ii. overcurrent devices at the Point of Interconnection
 - iii. SCADA meter in series/parallel with the Company CTs/PTs
9. **Facility Operation Responsibilities of the Parties:**

Each Party will operate the facilities it owns.
10. **Facility Maintenance Responsibilities of the Parties:**

Each Party will maintain the equipment it owns at its expense.
11. **Maximum Contract Demand:** 900 kW

12. Other Terms and Conditions:

- A. Cooperative and Company will mutually agree on the coordination of the overcurrent devices provided by Cooperative at the Point of Interconnection.

- B. Cooperative recognizes that Company is installing the facilities described hereinabove to facilitate Cooperative's request for a new Point of Interconnection to be provided by this Agreement. If Cooperative cancels its request for this Point of Interconnection prior to or after energizing this Point of Interconnection because the facilities are not required, Cooperative, subject to the provision below, agrees to pay the actual installed costs incurred and committed to be incurred by Company and the actual costs of removal of the Company material and equipment. The total installed cost of the Company facilities described hereinabove is estimated to be Forty-two Thousand Dollars (\$42,000) which Cooperative agrees is reasonable. In the event Cooperative cancels its request for this Point of Interconnection prior to the time that the Point of Interconnection is placed in service, or if Cooperative terminates and discontinues use of this Point of Interconnection after it is placed in service, the provisions of Section 4.11 or 4.12 of the Interconnection Agreement, as applicable, shall control. In either such case, any payment by the Cooperative will be treated as a contribution in aid of construction for tax purposes and the Cooperative agrees to reimburse Company a tax gross up amount for any federal income tax that may be due as a result any such payment by Cooperative to Company.

[The remainder of this page intentionally left blank]

BARNHART PHILLIPS
97SAPHBA

C/O 2-2-2 AAC TO 1/0 AAC
DELTA PRIMARY

Sun 3000
19891530254346

BARNHART PHILLIPS
0371

2 10 240W/20V

Faxing
 Folio 1
 38624676254415
 40*4
 D531J

Install
Pole 2
39094638254350
45' 2
D5301

Instal
Pole 3
39094606254334
45' 2
08301

Install
Pole 4
30004506254321
45 4
DS317

INSTALL 2-45-2 POLES, 1-45-4 POLE, 3 SPANS
OF 1/0-1/0-1/0 AAAC 3PH PRI, 3-333KVA 2400
TO 7200 STEP-UP TRANSFORMERS ON A RACK
AND PRIMARY METER POINT FOR SWTEC.
REMOVE 1 SPAN OF #2 QUAD SEC

FACILITY SCHEDULE NO. 26

1. **Name:** **Northern Natural Line**
2. **Facility Location:** The Point of Interconnection is approximately 13.5 miles northwest of Eldorado, in Schleicher County, Texas. More specifically, the Point of Interconnection is where Company's jumpers physically connect to the Cooperative's primary conductors terminating on the tap pole.
3. **Delivery Voltage:** 12.5 kV
4. **Metering Voltage:** 12.5 kV
5. **Loss Adjustment Due To Meter Location:** None
6. **Normal Operation of Interconnection:** Closed
7. **One-Line Diagram Attached:** Yes
8. **Facilities Ownership and Installation Responsibilities of the Parties:**
 - A. Company will install and own the following facilities:
 - i. 12.5 kV distribution feeder including all facilities the distribution feeder needs to accommodate and serve the Point of Interconnection
 - ii. the meter pole
 - iii. the metering facilities
 - iv. the tap pole
 - B. Cooperative will install and own the following facilities:
 - i. the facilities on the load-side of the tap pole
 - ii. overcurrent devices at the Point of Interconnection
 - iii. SCADA meter in series/parallel with the Company CTs/PTs
9. **Facility Operation Responsibilities of the Parties:**

Each Party will operate the facilities it owns.
10. **Facility Maintenance Responsibilities of the Parties:**

Each Party will maintain the equipment it owns at its expense.
11. **Maximum Contract Demand:** 900 kW
12. **Other Terms and Conditions:**
 - A. Cooperative and Company will mutually agree on the coordination of the overcurrent devices provided by Cooperative at the Point of Interconnection.

B. Cooperative recognizes that Company is installing the facilities described hereinabove to facilitate Cooperative's request for a new Point of Interconnection to be provided by this Agreement. If Cooperative cancels its request for this Point of Interconnection prior to or after energizing this Point of Interconnection because the facilities are not required, Cooperative, subject to the provision below, agrees to pay the actual installed costs incurred and committed to be incurred by Company, and the actual costs of removal of the Company material and equipment. The total installed cost of the Company facilities described hereinabove is estimated to be One Hundred Twenty-four Thousand Dollars (\$124,000) which Cooperative agrees is reasonable. In the event Cooperative cancels its request for this Point of Interconnection prior to the time that the Point of Interconnection is placed in service, or if Cooperative terminates and discontinues use of this Point of Interconnection after it is placed in service, the provisions of Section 4.11 or 4.12 of the Interconnection Agreement, as applicable, shall control. In either such case, any payment by the Cooperative will be treated as a contribution in aid of construction for tax purposes and the Cooperative agrees to reimburse Company a tax gross up amount for any federal income tax that may be due as a result any such payment by Cooperative to Company.

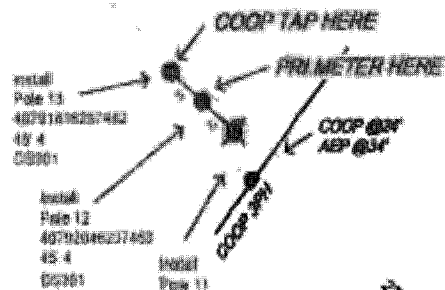
[The remainder of this page intentionally left blank]

ELDORADO OCB 2800
3-SBD ON POLE#
40840686235231

REMOVE 1-35', 1-40' 3PH TAN POLE. INSTALL 2-40'
3-45' TAN POLES, 2 SPANS OF 2-2-2-2 AAAC 3PH
UNDERBUILD, AND PRIMARY METER POINT.

Install
Pole 18
40708440237585
40' 4
DSB01

Remove
Pole 15
40708440237086
35' 4
DSB01



Install
Pole 13
4070180237462
40' 4
DSB01

Install
Pole 12
407010046237458
45' 4
DSB01

Remove
Pole 11
40702270237444
45' 4
DSB01

Remove
Pole 15
40702270237444
40' 4
DSB01

Remove
Pole 10
40708440237273
40' 4
DSB01

MAP#3

FACILITY SCHEDULE NO. 27

1. **Name:** Yucca
2. **Facility Location:** The Point of Interconnection (30° 59' 26.70" N., 101° 04' 37.704" W.), is located in Crockett County, Texas, within the Yucca substation ("Substation"). More specifically, the Point of Interconnection is where Company's jumpers from the meter pole physically connect to the Cooperative's primary conductors terminating on the meter pole.
3. **Delivery Voltage:** 12.5 kV
4. **Metering Voltage:** 12.5 kV
5. **Loss Adjustment Due To Meter Location:** None
6. **Normal Operation of Interconnection:** Closed
7. **One-Line Diagram Attached:** Yes
8. **Facilities Ownership and Installation Responsibilities of the Parties:**
 - A. **Company will install and own the following facilities:**
 - v. the Yucca substation and all the facilities within it
 - vi. the meter pole within the Substation
 - vii. the metering facilities
 - viii. the jumpers from the meter pole
 - B. **Cooperative will install and own the following facilities:**
 - iv. the facilities on the load-side of the meter pole
 - v. overcurrent devices at the Point of Interconnection
 - vi. SCADA meter in series/parallel with the Company CTs/PTs
9. **Facility Operation Responsibilities of the Parties:**

Each Party will operate the facilities it owns.
10. **Facility Maintenance Responsibilities of the Parties:**

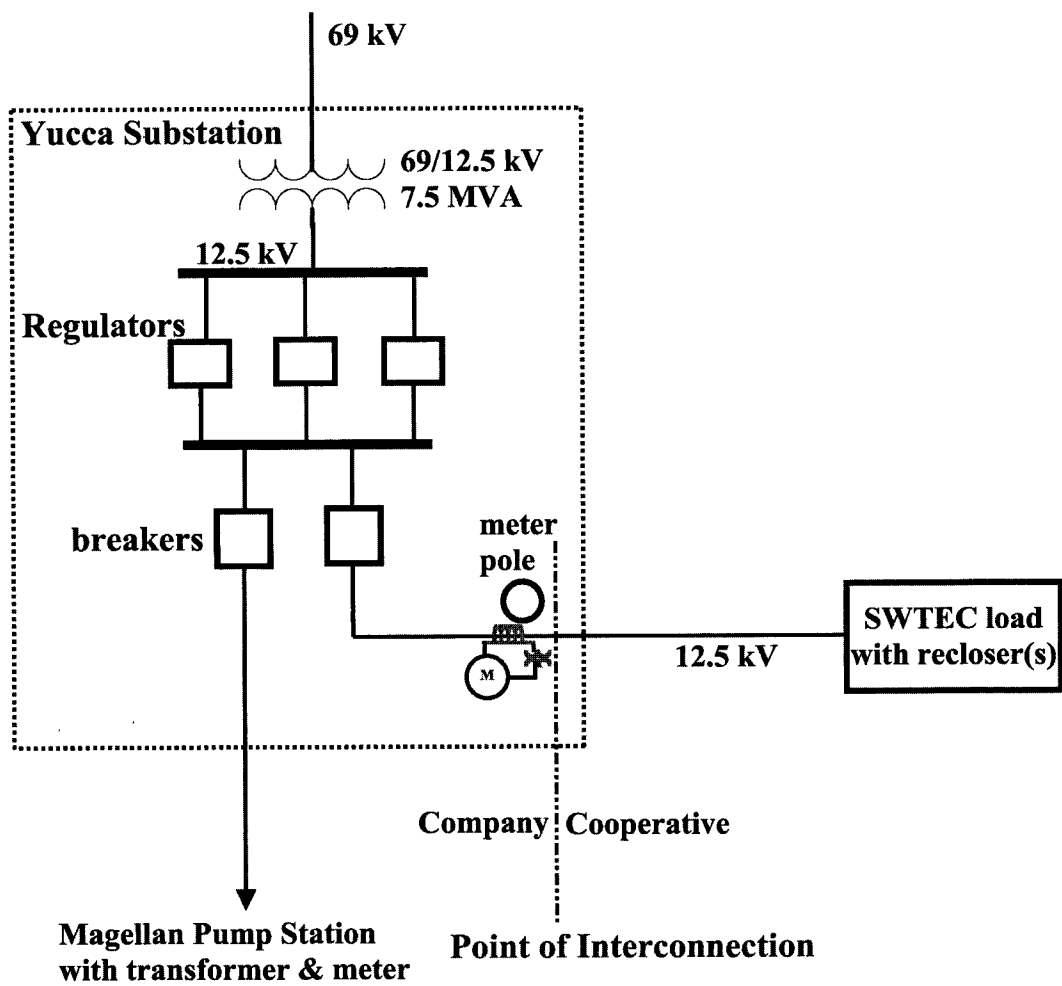
Each Party will maintain the equipment it owns at its expense.
13. **Estimated Peak Load:** 4000 kW
14. **Other Terms and Conditions:**
 - A. Cooperative and Company will mutually agree on the coordination of the overcurrent devices provided by Cooperative at the Point of Interconnection.

B. Cooperative recognizes that Company is installing the facilities described hereinabove to facilitate Cooperative's request for a new Point of Interconnection to be provided by this Agreement. If Cooperative cancels its request for this Point of Interconnection prior to or after energizing this Point of Interconnection because the facilities are not required, Cooperative, subject to the provision below, agrees to pay the actual installed costs incurred and committed to be incurred by Company, and the actual costs of removal of the Company material and equipment. The total installed cost of the Company facilities described hereinabove is estimated to be One Million Two Hundred Sixty-four Thousand Dollars (\$1,264,000) which Cooperative agrees is reasonable. In the event Cooperative cancels its request for this Point of Interconnection prior to the time that the Point of Interconnection is placed in service, or if Cooperative terminates and discontinues use of this Point of Interconnection after it is placed in service, the provisions of Section 4.11 or 4.12 of the Interconnection Agreement, as applicable, shall control. In either such case, any payment by the Cooperative will be treated as a contribution in aid of construction for tax purposes and the Cooperative agrees to reimburse Company a tax gross up amount for any federal income tax that may be due as a result any such payment by Cooperative to Company.

C. Estimated in-service date for the Point of Interconnection is:

November 29, 2013

[The remainder of this page intentionally left blank]



Conceptual Drawing
Not to scale

FACILITY SCHEDULE NO. 28

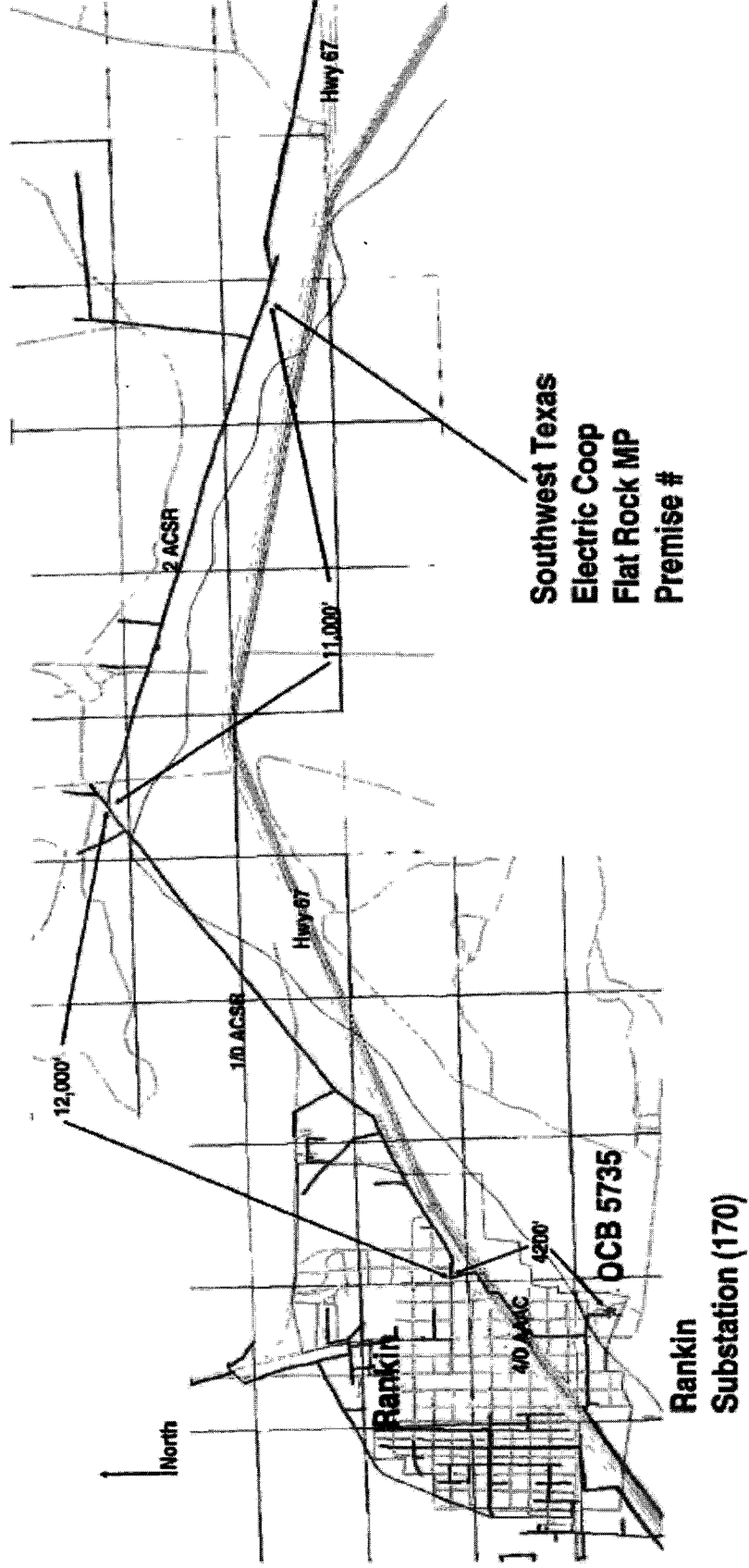
1. **Name:** **Flat Rock**
2. **Facility Location:** The Point of Interconnection (31° 14' 06" N., 101° 52' 15.6" W.), is located approximately 4 miles east of Rankin, and north 0.12 miles from Hwy 67 in Upton County, Texas. More specifically, the Point of Interconnection is where Company's jumpers from the meter pole physically connect to the Cooperative's primary conductors terminating on the meter pole.
3. **Delivery Voltage:** 12.5 kV
4. **Metering Voltage:** 12.5 kV
5. **Loss Adjustment Due To Meter Location:** None
6. **Normal Operation of Interconnection:** Closed
7. **One-Line Diagram Attached:** Yes
8. **Facilities Ownership:**
 - A. **Company owns the following facilities:**
 - i. the Rankin 5735, 3-phase distribution feeder
 - ii. the meter pole
 - iii. the metering facilities
 - iv. the jumpers from the meter pole
 - B. **Cooperative owns the following facilities:**
 - i. the facilities on the load-side of the meter pole
 - ii. overcurrent devices at the Point of Interconnection
 - iii. SCADA meter in series/parallel with the Company CT's/PT's
9. **Facility Operation Responsibilities of the Parties:**

Each Party will operate the facilities it owns.
10. **Facility Maintenance Responsibilities of the Parties:**

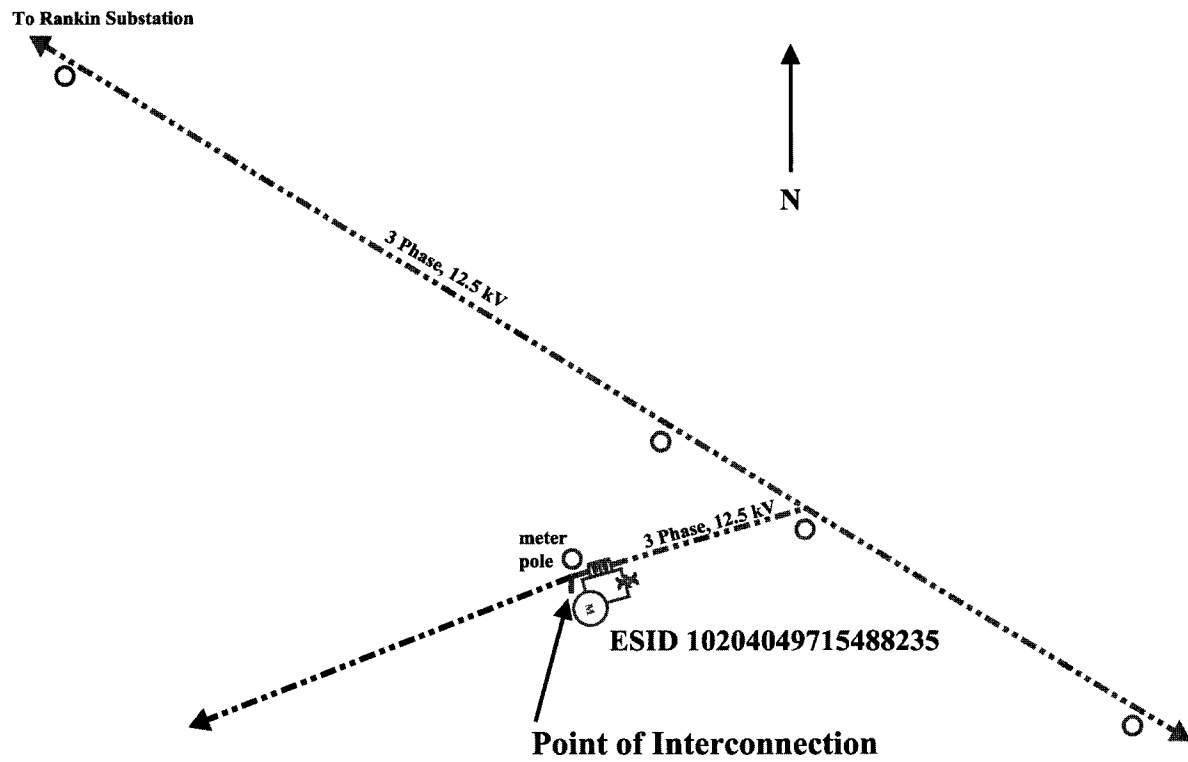
Each Party will maintain the equipment it owns at its expense.
11. **Estimated Peak Load:** 1500 kW
12. **Other Terms and Conditions:**
 - C. Cooperative and Company will mutually agree on the coordination of the overcurrent devices provided by Cooperative at the Point of Interconnection.


B. Estimated in-service date for the Point of Interconnection is: May 15, 2013

[The remainder of this page intentionally left blank]



Conceptual One-line Drawing of Point of Interconnect



Company 
Cooperative 

Conceptual Drawing
Not to scale