



Control Number: 35077



Item Number: 340

Addendum StartPage: 0

**Project No. 35077**

2012 DEC 13 PM 4:41

PUBLIC UTILITIES COMMISSION  
FILING CLERK

**First Amendment to**

**INTERCONNECTION AGREEMENT**

**Between**

**Wind Energy Transmission Texas, LLC  
and**

**LCRA Transmission Services Corporation**

**Dated**

**November 30, 2012**

340

**FIRST AMENDMENT TO  
INTERCONNECTION AGREEMENT  
BETWEEN  
WIND ENERGY TRANSMISSION TEXAS, LLC and  
LCRA TRANSMISSION SERVICES CORPORATION**

This First Amendment ("Amendment") is made and entered into this 30<sup>th</sup> day of NOVEMBER, 2012, between Wind Energy Transmission Texas, LLC ("WETT") and LCRA Transmission Services Corporation ("LCRA TSC") collectively referred to hereinafter as the Parties.

**WHEREAS**, LCRA TSC and WETT entered into that certain Interconnection Agreement executed April 5, 2012 (the "Agreement"), and;

**WHEREAS**, the Parties desire to clarify the type of telecommunications equipment required for the transmission line protective relaying schemes at the Divide Point of Interconnection to ensure compatibility and effective operations.

**NOW, THEREFORE**, in consideration of the mutual promises and undertakings herein set forth, the Parties agree to amend the Agreement as follows:

1. Exhibit "A" attached to the Agreement is deleted in its entirety and Exhibit "A" attached to this First Amendment is hereby added to the Agreement in lieu thereof.
2. Facility Schedule No. 1 (including the diagrams attached thereto) attached to the Agreement is deleted in its entirety and Facility Schedule No. 1 (including the diagrams attached thereto) attached to this First Amendment is hereby added to the Agreement in lieu thereof.
3. Facility Schedule No. 1 (including the diagrams attached thereto) attached to this First Amendment will become effective upon execution of this First Amendment by the Parties.

Except as otherwise expressly provided for herein, the Agreement will continue in full force and effect in accordance with its terms.

----The remainder of this page has intentionally been left blank ----

IN WITNESS WHEREOF, the Parties have caused this First Amendment to be executed in several counterparts, each of which shall be deemed an original but all shall constitute one and the same instrument.

WIND ENERGY TRANSMISSION  
TEXAS, LLC

By: [Signature]

Name: L. Wayne Morton

Title: General Manager

Date: 11/30/12

LCRA TRANSMISSION SERVICES  
CORPORATION

By: [Signature]

Name: Ray Pfefferkorn, P.E.

Title: LCRA Transmission Engineering  
Manager

Date: 11/20/12



**EXHIBIT A**  
First Amendment

<b>FACILITY SCHEDULE NO.</b>	<b>LOCATION OF POINT(S) OF INTERCONNECTION (# of Points)</b>	<b>INTERCONNECTION VOLTAGE (KV)</b>	<b>EFFECTIVE DATE OF INTERCONNECTION</b>
1	Divide Switchyard – (one Point of Interconnection)	345 kV	Date of First Amendment
2			
3			

**FACILITY SCHEDULE NO. 1**  
**First Amendment**

1. **Name:** Divide Switchyard
2. **Point of Interconnection location:** The Point of Interconnection is located at the LCRA TSC's Divide Switchyard in Coke County, Texas. Divide Switchyard is located approximately 4 miles Southeast of State Highway 158 in the existing LCRA TSC Gasconades Creek to Twin Buttes 345 kV transmission line. The Point of Interconnection shall be the physical point where the LCRA TSC's switchyard facilities connect to the WETT four (4) hole spade terminals on the WETT 345 kV transmission line dead-end assembly terminating on the LCRA TSC's Divide Switchyard line dead-end structure.
3. **Delivery Voltage:** 345kV
4. **Metered Voltage:** Not applicable.
5. **Normal closed:** Yes
6. **One-Line Diagram Attached:** Yes
7. **Facilities owned by WETT:** WETT owns the approximately 14 mile long single-circuit 345 kV transmission line (double-circuit capable) from the Divide Switchyard to the Sand Bluff Substation, including bundled 1590 ACSR "Falcon" conductors, static shielding, transmission line structures and rights-of-way. WETT owns their transmission line dead-end insulator string and attachment hardware connecting to the LCRA TSC's substation dead end structure. WETT owns the OPGW on the transmission line up to the splice can at the LCRA TSC substation dead-end structure. WETT does not own any substation equipment at the Divide Switchyard. For this Point of Interconnection, WETT owns the transmission line termination, protection and control equipment, and communications equipment (including RFL mux equipment interfaced to their transmission line protective relay panels and their SONET equipment) at the Sand Bluff Substation.
8. **Facilities owned by LCRA TSC:** The LCRA TSC owns the Divide Switchyard, including the 345 kV buses, 345 kV circuit breakers, 345 kV switches, 345kV line surge arrestors at the substation dead-end structure for the WETT 345 kV line, 345 kV instrument transformers, protection and control panels for the WETT 345 kV line, Remote Terminal Unit, communication circuits, and jumpers from the substation equipment to the WETT 345 kV transmission line at the Point of Interconnection. The LCRA TSC owns the splice can at the dead-end structure, the facility entry cable and fiber patch panel. The LCRA TSC owns all the Divide switchyard equipment for the WETT 345 kV transmission line termination, protection and control, and communications equipment (including RFL mux equipment interfaced to their transmission line protective relay panels and their SONET equipment).
9. **Cost Responsibility:** Each Party will be fully responsible for the liabilities related to

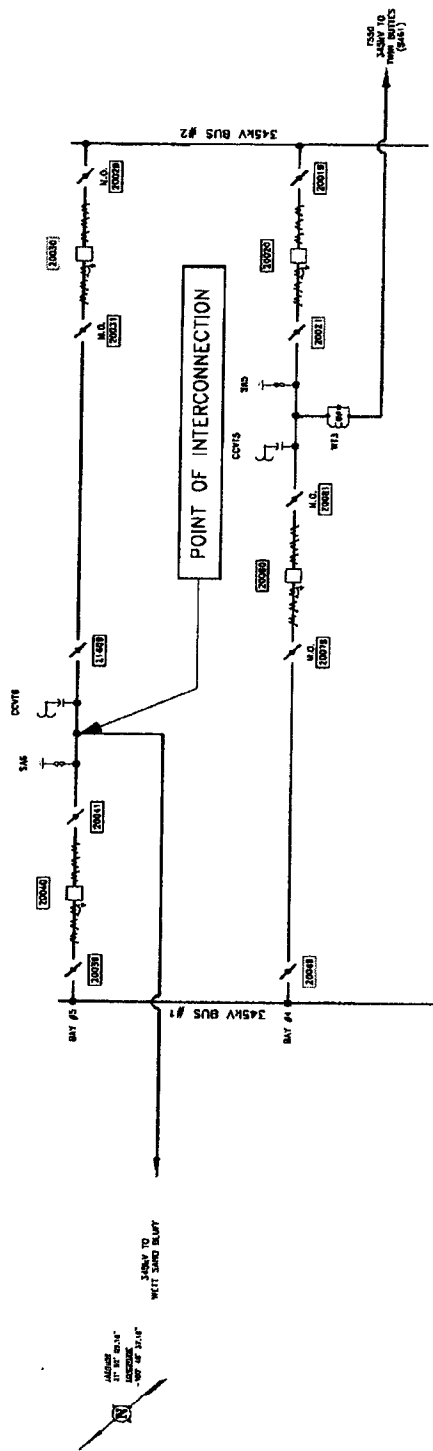
the facilities it owns. WETT and LCRA TSC will each be responsible for all costs it incurs in connection with establishment and maintenance of the Point of Interconnection in accordance with this Facility Schedule.

10. **Operational and Maintenance Responsibility:** Each Party will be responsible for the operation and maintenance of the facilities it owns at its own cost.

11. **Supplemental terms and conditions:**

- (a) The LCRA TSC will monitor the WETT 345 kV transmission line flows and other facilities at the Divide Switchyard.
- (b) The LCRA TSC will provide ICCP data from the Divide Switchyard to ERCOT in accordance with ERCOT requirements.
- (c) WETT will provide the 345 kV transmission line design parameters and modeling information to LCRA TSC and to ERCOT, including the Facility Rating of the WETT line from 20 to 115 degrees Fahrenheit ambient in five degree increments for Normal, Two-Hour, and Fifteen-Minute conditions. The Facility Rating of the WETT line will take into consideration the LCRA TSC substation series elements provided by LCRA TSC.
- (d) The LCRA TSC will install substation terminal equipment nominally rated at 3000 Amp.
- (e) The Parties will coordinate on the use of dynamic ratings for the WETT 345 kV line where the dynamic ratings are ambient temperature dependent from 20 to 115 degrees Fahrenheit ambient in five degree increments.
- (f) The LCRA TSC's standard 345 kV transmission line protection schemes will be applied and reviewed with WETT. Any deviations must be mutually agreed upon by WETT and LCRA TSC. Relay settings will be developed by LCRA TSC and reviewed with WETT.
- (g) Each Party will name and number their respective equipment.
- (h) Outage scheduling for the WETT 345 kV line will be coordinated through the LCRA TSC's System Operations Control Center, as LCRA TSC shall direct all switching at the Point of Interconnection and coordinate all switching of the Divide Switchyard equipment.
- (i) The LCRA TSC will install equipment for distance-to-fault information and will make that information available to WETT for the WETT 345 kV transmission line.
- (j) WETT is responsible for NERC TADS reporting for their 345 kV line.

# FACILITY SCHEDULE NO. 1 ONE-LINE DIAGRAM



DIVIDE SUBSTATION  
THIS IS NOT A COMPLETE ONE LINE DIAGRAM  
FOR A COMPLETE ONE-LINE DIAGRAM OF THIS  
SUBSTATION, REFER TO DWG.  
S591-E-0001-1