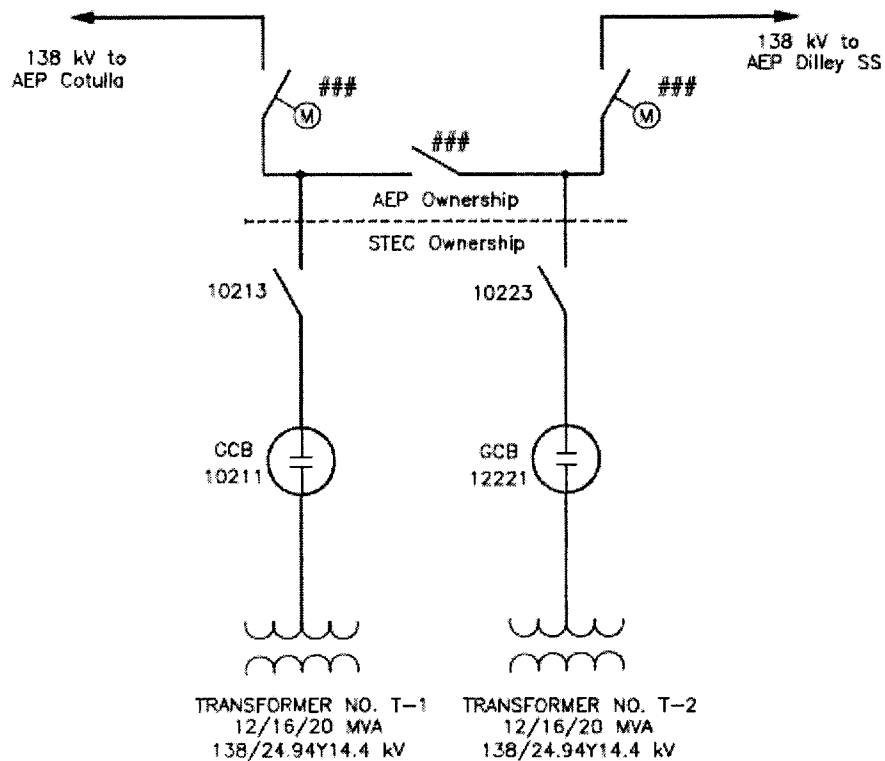


Interconnection identified in Section 2 of this Facility Schedule. If Cooperative cancels its request for these Points of Interconnection prior to energizing the Points of Interconnection or if Cooperative terminates the Points of Interconnection because the facilities are not required, Cooperative agrees to pay the actual installed costs incurred and committed to be incurred by Company, and the actual costs of removal of the Company material and equipment, that Company determines cannot be recovered through transmission cost of service rates. The total installed cost of the Company facilities described hereinabove is estimated to be One Million Five Hundred Seventy-five Thousand Eight Hundred Thirty-five Dollars (\$1,575,835) which Cooperative agrees is reasonable.

**[The remainder of this page intentionally left blank]**



Ⓜ SCADA Controlled  
Motor Operator

SOUTH TEXAS ELECTRIC COOPERATIVE, INC.					DRG. NO. JA-1A		
P.O. BOX 119			NURSERY, TEXAS 77976				
JARDIN SUBSTATION							
LaSALLE COUNTY							
JARDIN TIE							
DRWN. BY	DD	CHKD. BY	APPRD. BY	SCALE	NA	DATE	5/2012

## FACILITY SCHEDULE NO. 60

1. **Name:** **Reveille**
2. **Facility Location:** The Reveille Substation ("Substation") is located just south of the town of Cotulla, to the west of I35 and south of Conchina road in LaSalle County, Texas. The Substation is connected to Company's 138 kV Cotulla to Encinal transmission line approximately 2.5 transmission miles south of the Cotulla substation and approximately 27 transmission miles north of the Encinal substation. The two (2) Points of Interconnection are within the Substation at 1) the 138 kV line-side of the disconnect switch of transformer #1 ("T-1"), and 2) the 138 kV line-side of the disconnect switch of transformer #2 ("T-2"). More specifically the Points of Interconnection are where the conductors from the 138 kV bus facilities physically contact the 138 kV bus-side of the switches.
3. **Delivery Voltage:** 138 kV
4. **Metered Voltage:** 138 kV
5. **Loss Adjustment Due To Meter Location:** No
6. **Normal Operation of Interconnection:** Closed
7. **One-Line Diagram Attached:** Yes
8. **Facilities Ownership and Installation Responsibilities of the Parties:**
  - A. **Cooperative will install and own the following facilities:**
    - Control house with cable trays in the concrete floor
    - T-1 and associated high-side 138 kV disconnect switch and high-side 138 kV circuit switcher, if applicable
    - T-2 and associated high-side 138 kV disconnect switch and high-side 138 kV circuit switcher, if applicable
    - One set of three multi-ratio, tank mounted, CT's in the primaries of T-1 and T-2 for Company use in bus differential protection
    - Transformer differential and distribution bus and feeder relaying
    - All distribution voltage level facilities including the metering instrument transformers
    - Property, site work, fencing, ground grid
    - RTU and associated communications facilities
    - Communication and distribution feeder breaker battery back-up systems if needed
    - Substation service facilities
    - All other facilities not specified or specifically associated with the items listed below as Company property

**B. Company will install and own the following facilities:**

- i. the 138 kV Cotulla-Encinal transmission line
- ii. breaker and motor operated line switches on the Reveille-Cotulla 138 kV transmission line and associated relaying facilities
- iii. breaker and motor operated line switches on the Reveille-Encinal 138 kV transmission line and associated relaying facilities
- iv. 125 VDC battery back-up system (batteries, AC/DC panel, charger, rack and accessories) within Cooperative's control house
- v. 138 kV bus differential protection
- vi. all control cables required for the control and protection of the Company-owned 138 kV facilities including cables for the operation of the motor operated line switches to Cotulla substation and Encinal substation
- vii. RTU and associated communications facilities
- viii. Metering facilities located in the control house connected to the secondary wiring of Cooperative's instrument transformers
- ix. Power potential transformer for station service

**9. Facility Operation Responsibilities of the Parties:**

- Each Party controls and operates all the facilities it owns except that Company shall have access through use of dual locks to operate the high-side disconnect switches of T-1 and T-2, in compliance with Cooperative dispatch instructions.

**10. Facility Maintenance Responsibilities of the Parties:**

- Each Party is responsible for maintenance of the facilities it owns that are provided for in this Facility Schedule.

**11. Maximum Demand: 17,000 kW**

**12. Other Terms and Conditions:**

Both parties have access to the Substation with locks in the gates and access to the control house with dual locks in a hasp type arrangement or dead bolts on individual doors.

Each Party provides its own SCADA communication circuit from its RTU to its control center unless a mutually agreeable alternative solution is reached. Each Party provides and maintains a monitor-only communications port on its RTU for use by the other Party to locally interrogate interconnection data as determined by mutual agreement or as specified herein. Cooperative provides transformer MW and MVAR load data to Company via Cooperative's monitor-only RTU communications port as described above. Additionally, Cooperative provides transformer MW and MVAR load data to ERCOT via Inter-control Center Communications Protocol (ICCP).

Cooperative recognizes that Company is installing the facilities described in Section 8(B) of this Facility Schedule to facilitate Cooperative's request for the new Points of

Interconnection identified in Section 2 of this Facility Schedule. If Cooperative cancels its request for these Points of Interconnection prior to energizing the Points of Interconnection or if Cooperative terminates the Points of Interconnection because the facilities are not required, Cooperative agrees to pay the actual installed costs incurred and committed to be incurred by Company, and the actual costs of removal of the Company material and equipment, that Company determines cannot be recovered through transmission cost of service rates. The total installed cost of the Company facilities described hereinabove is estimated to be Six Million Three Hundred Seventy-eight Thousand Five Hundred Thirty-four Dollars (\$6,378,534) which Cooperative agrees is reasonable.

**[The remainder of this page intentionally left blank]**

