



Control Number: 35077



Item Number: 304

Addendum StartPage: 0

**Project No. 35077**

**First Amendment to**

**INTERCONNECTION AGREEMENT**

**Between**

**City of Gonzales  
and**

**LCRA Transmission Services Corporation**

**Dated**

**June 15, 2012**

12 JUN 15 PM 3:42  
FILED  
CLERK OF DISTRICT COURT  
JULY 10 2012

304

**FIRST AMENDMENT TO  
INTERCONNECTION AGREEMENT**

This First Amendment ("Amendment") is made and entered into this 15 day of JUNE, 2012, between the City of Gonzales ("City") and the LCRA Transmission Services Corporation ("LCRA TSC") collectively referred to hereinafter as the Parties.

**WHEREAS**, the LCRA TSC and the City entered into that certain Interconnect Agreement executed December 22, 2008 and;

**WHEREAS**, the LCRA TSC will install a mobile transformer connection at Gonzales Substation, and;

**WHEREAS**, the LCRA TSC will install a mobile transformer connection at Harwood Substation

**NOW, THEREFORE**, in consideration of the mutual promises and undertakings herein set forth, the Parties agree to amend the Agreement as follows:

1. Exhibit "A" is deleted in its entirety and the Exhibit "A" attached to this First Amendment is hereby added to the Agreement in lieu thereof.

2. Facility Schedule No. 1 (including the diagrams attached thereto) is deleted in its entirety and Facility Schedule No. 1 attached to this First Amendment is hereby added to the Agreement in lieu thereof.

3. Facility Schedule No. 1 (including the diagrams attached thereto) attached to this First Amendment will become effective upon execution of this First Amendment by the Parties.

4. Facility Schedule No. 2 (including the diagrams attached thereto) is deleted in its entirety and Facility Schedule No. 2 attached to this First Amendment is hereby added to the Agreement in lieu thereof.

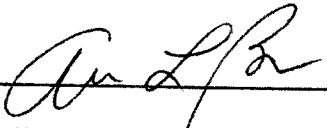
5. Facility Schedule No. 2 (including the diagrams attached thereto) attached to this First Amendment will become effective upon execution of this First Amendment by the Parties.

Except as otherwise expressly provided for herein, the Agreement will continue in full force and effect in accordance with its terms.

---The remainder of this page has intentionally been left blank---

IN WITNESS WHEREOF, the Parties have caused this First Amendment to be executed in several counterparts, each of which shall be deemed an original but all shall constitute one and the same instrument.

CITY OF GONZALES

By: 

Name: Allen Barnes

Title: City Manager

Date: 6-15-2012

LCRA TRANSMISSION SERVICES  
CORPORATION

By: 

Name: Ray Pfefferkorn, P.E.

Title: LCRA Transmission Engineering  
Manager

Date: 5/29/12



# EXHIBIT A

## First Amendment

[illegible]

**FACILITY SCHEDULE NO. 1**  
**First Amendment**

1. **Name:** Gonzales Substation
2. **Facility Location:** The Gonzales Substation is located at 304 W. Carroll, Gonzales, Gonzales County, Texas 78629.
3. **Points of Interconnection:** There are twelve (12) Points of Interconnection in the Gonzales Substation generally described as:
  - where the incoming distribution line connects to the tubular bus between switches GZ-11 and GZ-13 at breaker GZ-10.
  - where the jumper from breaker GZ-10 connects to the 4 hole pad on switch GZ-9.
  - where the jumper from breaker GZ-10 connects to the 4 hole pad on switch GZ-11.
  - where the incoming distribution line connects to the tubular bus between switches GZ-21 and GZ-23 at breaker GZ-20.
  - where the jumper from breaker GZ-20 connects to the 4 hole pad on switch GZ-19.
  - where the jumper from breaker GZ-20 connects to the 4 hole pad on switch GZ-21.
  - where the incoming distribution line connects to the tubular bus between switches GZ-41 and GZ-43 at breaker GZ-40.
  - where the jumper from breaker GZ-40 connects to the 4 hole pad on switch GZ-39.
  - where the jumper from breaker GZ-40 connects to the 4 hole pad on switch GZ-41.
  - where the incoming distribution line connects to the tubular bus between switches GZ-51 and GZ-53 at breaker GZ-50.
  - where the jumper from breaker GZ-50 connects to the 4 hole pad on switch GZ-49.
  - where the jumper from breaker GZ-50 connects to the 4 hole pad on switch GZ-51.
4. **Transformation Services Provided by LCRA TSC:** Yes
5. **Metering Services Provided by LCRA TSC:** Yes
6. **Delivery Voltage:** 12.5 kV
7. **Metered Voltage and Location:** The metered voltage is 12.5 kV. The metering current transformers are located in each feeder bay. The metering potential transformers are located on the 12.5 kV operating bus.
8. **One Line Diagram Attached:** Yes

**9. Description of Facilities Owned by Each Party:**

City owns:

- Four (4) distribution circuits including dead-end insulators that attach to the dead-end structure, conductor, and hardware
- Four (4) distribution circuit breakers GZ-10, GZ-20, GZ-40, and GZ-50 including jumpers and protection packages
- Four (4) 12.5 kV distribution circuit breaker foundations

LCRA TSC owns:

The Gonzales Substation including, but not limited to, the following items:

- One (1) power transformer PWT-1, T-1 with associated surge arresters
- One (1) circuit switcher CS-12395
- Five (5) distribution and total bays including A-frames, trusses, insulators, disconnect switches, surge arresters, 12.5 kV operating and transfer bus, bus potential transformers, and metering current transformers
- Mobile transformer connection in totalizing bay
- Underfrequency relay panel
- Station Service equipment
- Control house with battery

**10. Operational Responsibilities of Each Party:**

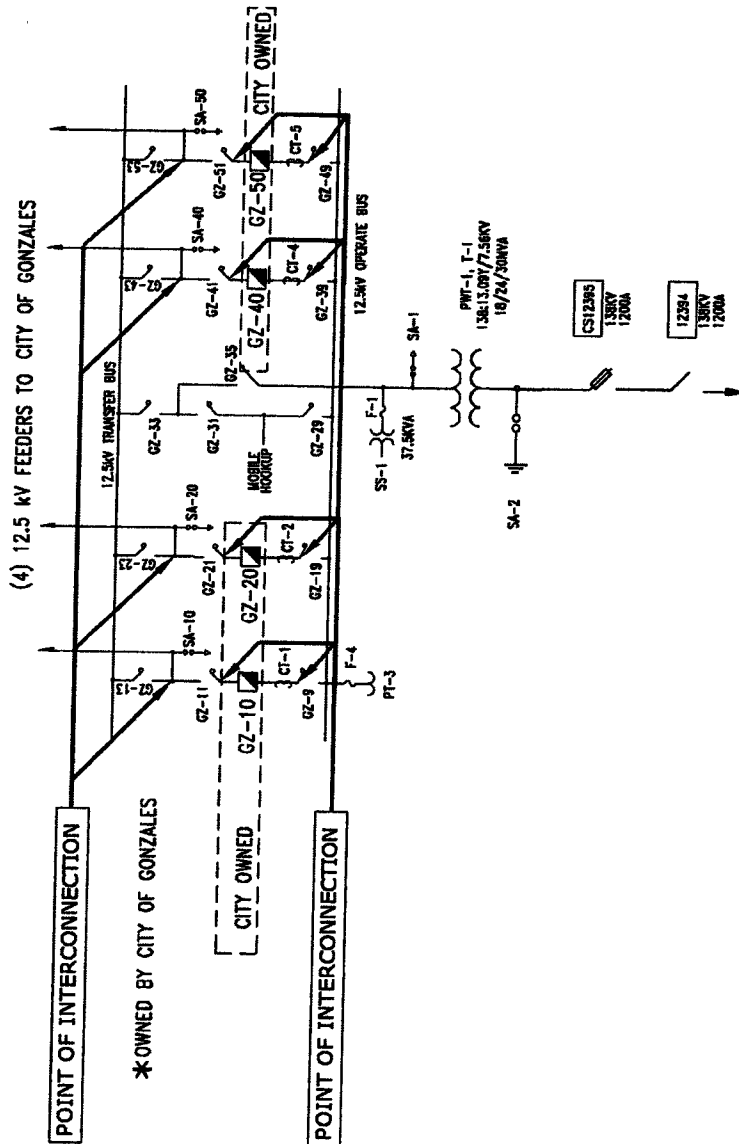
- The City will be responsible for the operation of the four (4) distribution circuit breakers serving the City feeders.
- LCRA TSC will be responsible for the operation from the low voltage through the power transformer to the high voltage equipment.

**11. Maintenance Responsibilities of Each Party:** Each Party will be fully responsible for the maintenance of the equipment it owns.

**12. Other Terms and Conditions:** The City and LCRA TSC are to share access to the substation by LCRA TSC locks in the gate and in the control house doors.

# GONZALES ONE-LINE DIAGRAM

First Amendment



GONZALES SUBSTATION

THIS IS NOT A COMPLETE ONE-LINE DIAGRAM

FOR A COMPLETE ONE-LINE DIAGRAM OF THIS SUBSTATION, REFER TO DWG. S234-E-0002.



**FACILITY SCHEDULE NO. 2**  
**First Amendment**

1. **Name:** Harwood Substation
2. **Facility Location:** The Harwood Substation is located at 13224 FM 794, Harwood, Gonzales County, Texas 78632.
3. **Points of Interconnection:** There are three (3) Point of Interconnection in the Harwood Substation generally described as:
  - where the incoming distribution line connects to the tubular bus between switches HW-31 and HW-33 at breaker HW-30.
  - where the jumper from breaker HW-30 connects to the 4 hole pad on switch HW-29.
  - where the jumper from breaker HW-30 connects to the 4 hole pad on switch HW-31.
4. **Transformation Services Provided by LCRA TSC:** Yes
5. **Metering Services Provided by LCRA TSC:** Yes
6. **Delivery Voltage:** 12.5 kV
7. **Metered Voltage and Location:** The metered voltage is 12.5 kV. The metering current transformers are located in the voltage regulator circuit The metering potential transformers are located on the 12.5 kV operating bus.
8. **One Line Diagram Attached:** Yes
9. **Description of Facilities Owned by Each Party:**

City owns:

  - One (1) distribution circuit including dead-end insulators that attach to the dead-end structure, conductor, and hardware
  - One (1) distribution circuit breaker HW-30 including foundation, jumpers, and protection package

LCRA TSC owns:

The Harwood Substation including, but not limited to, the following items:

  - One (1) power transformer T-1 with associated power fuse and surge arresters
  - One (1) transformer disconnect switch on 69 kV operating bus
  - One (1) mobile disconnect switch on the 69 kV operating bus
  - Three (3) single phase regulators

- Two (2) distribution and regulator bays including A-frames, trusses, insulators, disconnect switches, surge arresters, 12.5 kV operating and transfer bus, bus potential transformers, and metering current transformers
- Mobile transformer connections and two (2) associated switches at the end of the 12.5 kV operating and transfer bus
- Station Service equipment
- Control house with battery

**10. Operational Responsibilities of Each Party:**

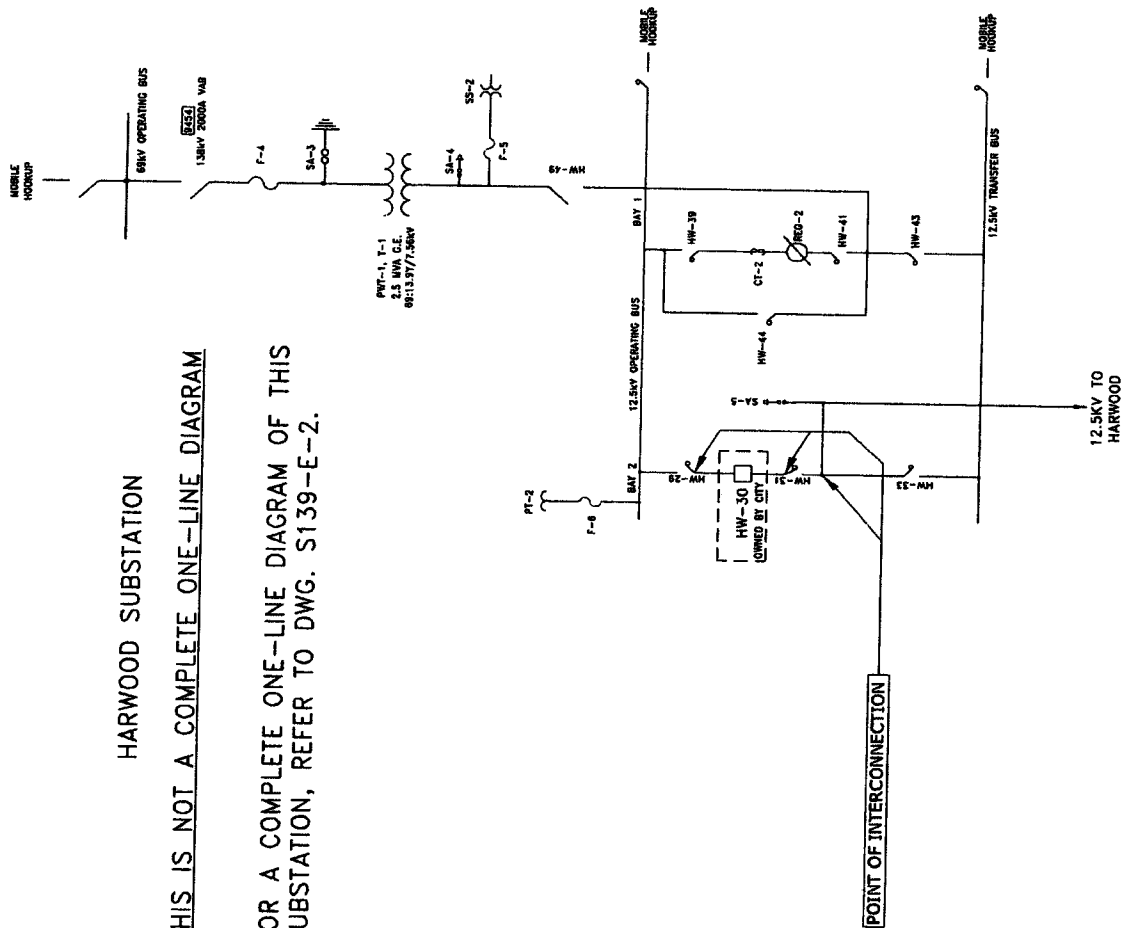
- The City will be responsible for the operation of the one (1) distribution circuit breaker serving the Harwood circuit.
- LCRA TSC will be responsible for the operation from the low voltage bus through the power transformer to the high voltage equipment.

**11. Maintenance Responsibilities of Each Party:** Each Party will be fully responsible for the maintenance of the equipment it owns.

**12. Other Terms and Conditions:** The City and LCRA TSC are to share access to the substation by LCRA TSC locks in the gate and in the control house doors.

# HARWOOD ONE-LINE DIAGRAM

First Amendment



HARWOOD SUBSTATION

THIS IS NOT A COMPLETE ONE-LINE DIAGRAM

FOR A COMPLETE ONE-LINE DIAGRAM OF THIS SUBSTATION, REFER TO DWG. S139-E-2.