



Control Number: 35077



Item Number: 294

Addendum StartPage: 0

Project No. 35077

Amendment No. 3

INTERCONNECTION AGREEMENT

Between

Fayette Electric Cooperative

and

LCRA Transmission Services Corporation

12 MAY 15 PM 3:26
FILING CLERK

May 3, 2012

294

**INTERCONNECTION AGREEMENT
AMENDMENT NO. 3**

This Amendment No. 3 ("Amendment") to the Interconnection Agreement dated October 23, 2008 is made and entered into this 3 day of MAY, 2012, between the Fayette Electric Cooperative ("FEC") and the LCRA Transmission Services Corporation ("LCRA TSC") collectively referred to hereinafter as the Parties.

WHEREAS, the LCRA TSC and the FEC entered into that certain Interconnect Agreement executed October 23, 2008, as amended by that certain Amendment No. 1 executed as of March 20, 2009, as amended by that certain Amendment No. 2 executed as of December 19, 2011 (collectively, as amended, the "Agreement"); and

WHEREAS, FEC no longer leases its transformation related facilities to LCRA TSC at Riverside, Round Top and Willow Springs Substations and by such action no longer takes Wholesale Transformation Service from LCRA TSC at these locations;

NOW, THEREFORE, in consideration of the mutual promises and undertakings herein set forth, the Parties agree to further amend the Agreement as follows:

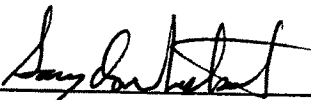
1. Exhibit "A" attached to the Agreement is deleted in its entirety and the Exhibit "A" attached to this Amendment No. 3 is hereby added to the Agreement in lieu thereof.
2. Exhibit "A" attached to this Amendment No. 3 is effective as of March 8, 2012, thru execution of this Amendment No. 3 by the Parties.
3. Facility Schedule No. 4 (including the diagrams attached thereto) is deleted in its entirety and Facility Schedule No. 4 attached to this Amendment No. 3 is hereby added to the Agreement in lieu thereof.
4. Facility Schedule No. 4 (including the diagrams attached thereto) attached to this Amendment No. 3 is effective as of March 8, 2012, thru execution of this Amendment No. 3 by the Parties.
5. Facility Schedule No. 5 (including the diagrams attached thereto) is deleted in its entirety and Facility Schedule No. 5 attached to this Amendment No. 3 is hereby added to the Agreement in lieu thereof.
6. Facility Schedule No. 5 (including the diagrams attached thereto) attached to this Amendment No. 3 is effective as of March 8, 2012, thru execution of this Amendment No. 3 by the Parties.
7. Facility Schedule No. 9 (including the diagrams attached thereto) is deleted in its entirety and Facility Schedule No. 9 attached to this Amendment No. 3 is hereby added to the Agreement in lieu thereof.

8. Facility Schedule No. 9 (including the diagrams attached thereto) attached to this Amendment No. 3 is effective as of March 8, 2012, thru execution of this Amendment No. 3 by the Parties.

Except as otherwise expressly provided for herein, the Agreement will continue in full force and effect in accordance with its terms.

IN WITNESS WHEREOF, the Parties have caused this Amendment No. 3 to be executed in several counterparts, each of which shall be deemed an original but all shall constitute one and the same instrument.

FAYETTE ELECTRIC COOPERATIVE

By: 

Name: Gary Don Nietsche

Title: General Manager

Date: 05/03/2012

LCRA TRANSMISSION SERVICES
CORPORATION

By: 

Name: Ray Pfefferkorn, P.E.

Title: LCRA Transmission Engineering
Manager

Date: 4/26/12



EXHIBIT A
Amendment No. 3

FACILITY SCHEDULE NO.	LOCATION OF POINT(S) OF INTERCONNECTION (# of Points)	INTERCONNECTION VOLTAGE (KV)	EFFECTIVE DATE OF INTERCONNECTION
1	Flatonia (5)	12.5 kV	10/23/2008
2	La Grange (12)	12.5 kV	12/19/2011
3	Plum (1)	12.5 kV	12/19/2011
4	Riverside (1)	138 kV	March 8, 2012
5	Round Top (1)	138 kV	March 8, 2012
6	Schulenburg (9)	12.5 kV	10/23/2008
7	Warda (12)	24.9 kV	10/23/2008
8	Weimar (5)	12.5 kV	10/23/2008
9	Willow Springs (1)	138 kV	March 8, 2012
10			
11			
12			
13			
14			
15			
16			
17			
18			
19			
20			
21			
22			
23			
24			
25			
26			
27			
28			
29			
30			
31			
32			
33			
34			

FACILITY SCHEDULE NO. 4

Amendment No. 3

1. **Name:** Riverside Substation
2. **Facility Location:** The Riverside Substation is located at 3646 Old Plum Hwy., La Grange, Fayette County, Texas 78945.
3. **Points of Interconnection:** There is one (1) Point of Interconnection in the Riverside Substation generally described as:
 - where the tee connector, terminating the jumper from circuit switcher CS-2870, attaches to the tubular jumper running between switches 2866 and 2868.
4. **Transformation Services Provided by LCRA TSC:** No
5. **Metering Services Provided by LCRA TSC:** Yes
6. **Delivery Voltage:** 138 kV
7. **Metered Voltage and Location:** The metering voltage is 12.5 kV. The metering current transformer is located in the total bay. The bus potential transformer is located on the 12.5 kV operating bus.
8. **One Line Diagram Attached:** Yes
9. **Description of Facilities Owned by Each Party:**

FEC owns:

The Riverside Substation including, but not limited to, the following items:

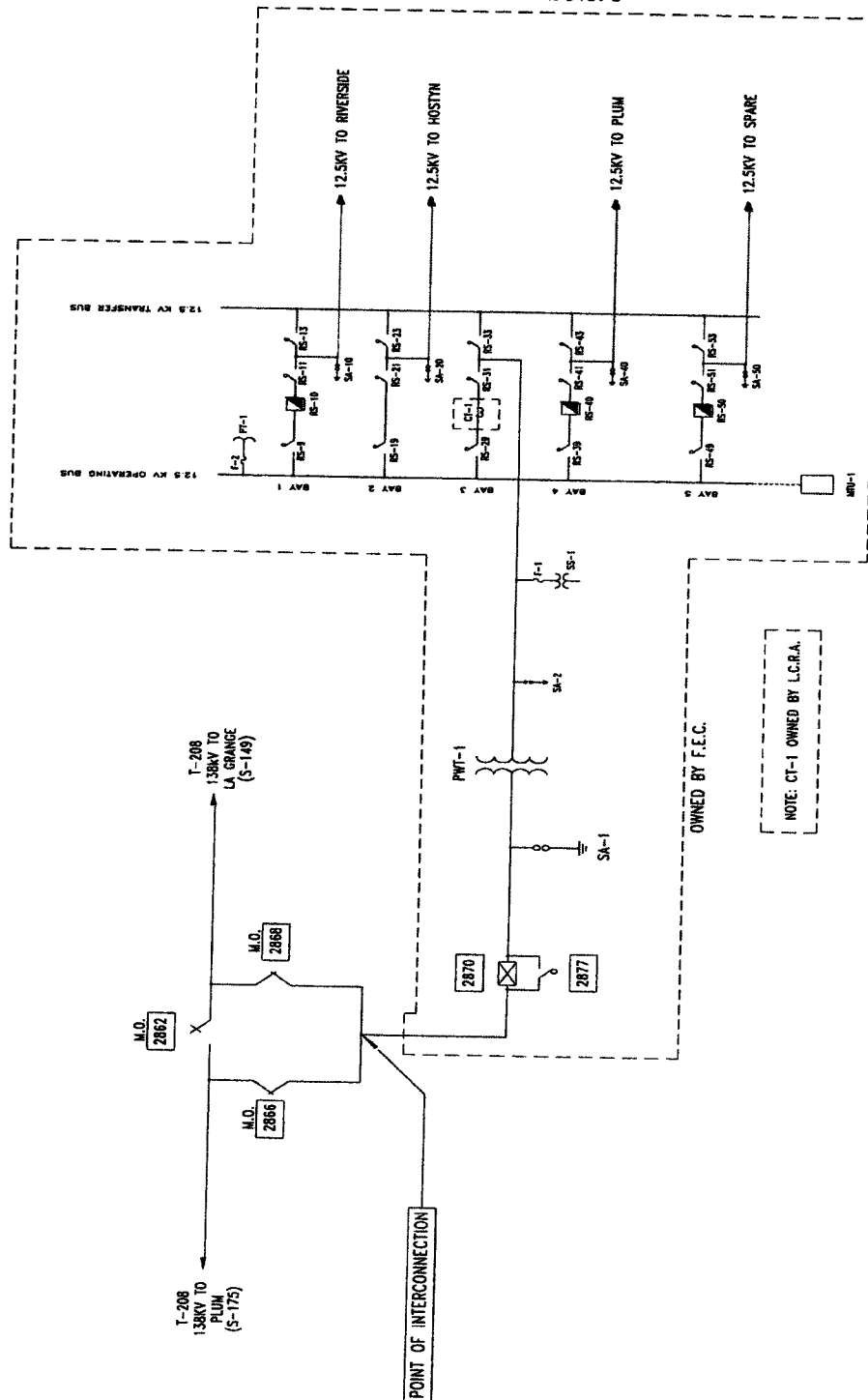
 - 138 kV bus including structures, insulators, foundations and jumpers
 - One (1) circuit switcher CS-2870 and associated bypass switch 2877
 - One (1) power transformer PWT-1 with associated surge arresters
 - All distribution and total bays including A-frames, trusses, insulators, disconnect switches, surge arresters, 12.5 kV operating and transfer bus, bus potential transformer and associated cabling
 - Control house and battery bank
 - Station Service
 - One (1) modulation transformer MTU-1 with associated fuse and surge arrester

LCRA TSC owns:

- 138 kV dead-end structures, foundations, insulators and jumpers
- Three (3) 138 kV motor operated switches 2862 (with interrupter), 2866 and 2868 with control and annunciator panel
- Metering current transformer CT-1
- Underfrequency relay panel
- RTU

10. **Operational Responsibilities of Each Party:** Each Party is responsible for the operation of the equipment it owns.
11. **Maintenance Responsibilities of Each Party:** Each Party will be fully responsible for the maintenance of the equipment it owns.
12. **Other Terms and Conditions:** FEC and LCRA TSC are to share access to the substation by FEC and LCRA TSC locks in the gate and in the control house doors.

Amendment No. 3



THIS IS NOT A COMPLETE ONE-LINE DIAGRAM
FOR A COMPLETE ONE-LINE DIAGRAM OF THIS
SUBSTATION, REFER TO DRAWING S263-E-0001.

FACILITY SCHEDULE NO. 5

Amendment No. 3

1. **Name:** Round Top Substation
2. **Facility Location:** The Round Top Substation is located at 500 N. Weyand Rd., Round Top, Fayette County, Texas 78932.
3. **Points of Interconnection:** There is one (1) Point of Interconnection in the Round Top Substation generally described as:
 - where the tee connector, terminating the jumper from switch 3864, attaches to the tubular jumper running between switches 4727 and 4728.
4. **Transformation Services Provided by LCRA TSC:** No
5. **Metering Services Provided by LCRA TSC:** Yes
6. **Delivery Voltage:** 138 kV
7. **Metered Voltage and Location:** The metering voltage is 24.9 kV. The metering current transformer is located in the total bay. The bus potential transformer is located on the 24.9 kV operating bus.
8. **One Line Diagram Attached:** Yes
9. **Description of Facilities Owned by Each Party:**

FEC owns:

The Round Top Substation including, but not limited to, the following items:

- 138 kV bus including structures, insulators, foundations and jumpers
- One (1) circuit switcher CS-3865 with associated disconnect switch 3864 and bypass switch 3867
- One (1) power transformer PWT-1, T-1 with associated surge arresters
- All distribution and total bays including A-frames, trusses, insulators, disconnect switches, surge arresters, 24.9 kV operating and transfer bus, bus potential transformer and associated cabling
- One (1) modulation transformer MTU with associated fuse and surge arrester
- Control house and battery bank
- Station Service

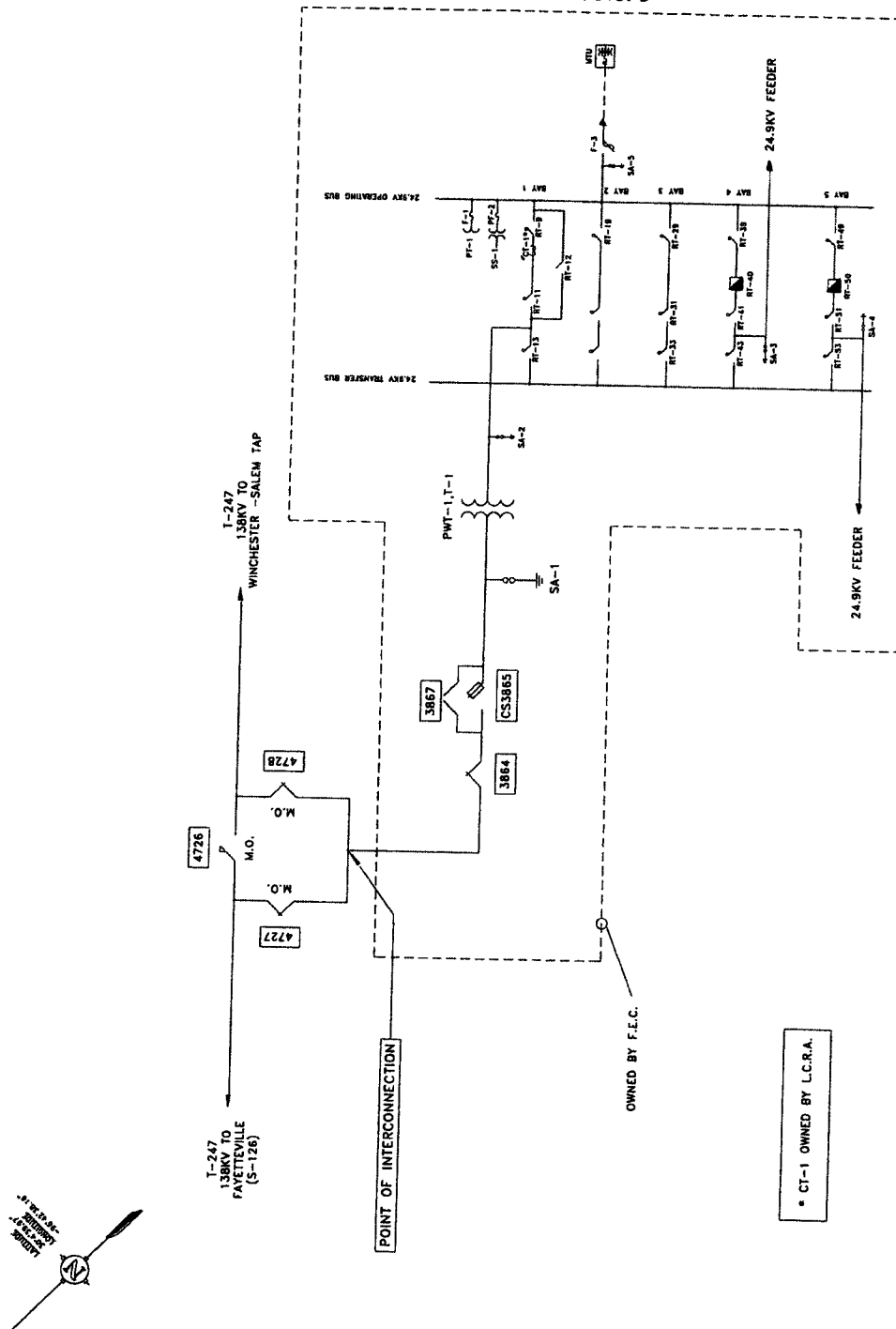
LCRA TSC owns:

- 138 kV dead-end structures, foundations, insulators and jumpers
- Three (3) 138 kV motor operated switches 4726 (with interrupter), 4727 and 4728 with control and annunciator panel
- Metering current transformer CT-1
- Underfrequency relay panel
- RTU

10. **Operational Responsibilities of Each Party:** Each Party is responsible for the operation of the equipment it owns.
11. **Maintenance Responsibilities of Each Party:** Each Party will be fully responsible for the maintenance of the equipment it owns.
12. **Other Terms and Conditions:** FEC and LCRA TSC are to share access to the substation by FEC and LCRA TSC locks in the gate and in the control house doors.

ROUND TOP ONE-LINE DIAGRAM

Amendment No. 3



ROUND TOP SUBSTATION
THIS IS NOT A COMPLETE ONE-LINE DIAGRAM
FOR A COMPLETE ONE-LINE DIAGRAM OF THIS
SUBSTATION, REFER TO DRAWING S247-E-0001.

FACILITY SCHEDULE NO. 9

Amendment No. 3

1. **Name:** Willow Springs Substation
2. **Facility Location:** The Willow Springs Substation is located at 6210 Darden Loop, Fayetteville, Fayette County, Texas 78940.
3. **Points of Interconnection:** There is one (1) Point of Interconnection in the Willow Springs Substation generally described as:
 - where the tee connector, terminating the jumper from circuit switcher CS-4735, attaches to the tubular jumper running between switches 4736 and 4738.
4. **Transformation Services Provided by LCRA TSC:** No
5. **Metering Services Provided by LCRA TSC:** Yes
6. **Delivery Voltage:** 12.5 kV
7. **Metered Voltage and Location:** The metering voltage is 12.5 kV. The metering current transformer is located in the total bay. The bus potential transformer is located on the 12.5 kV operating bus.
8. **One Line Diagram Attached:** Yes
9. **Description of Facilities Owned by Each Party:**

FEC owns:

The Willow Springs Substation including, but not limited to, the following items:

- 138 kV bus including structures, insulators, foundations and jumpers
- One (1) circuit switcher CS-4735
- One (1) power transformer PWT-1, T-1 with associated surge arresters
- All distribution and total bays including A-frames, trusses, insulators, disconnect switches, surge arresters, 12.5 kV operating and transfer bus, bus potential transformer and associated cabling
- Three (3) single phase regulators REG-1 with associated disconnect and bypass switches
- One (1) modulation transformer MTU-1 with associated surge arrester and fuse.
- Control house and battery bank
- Station Service

LCRA TSC owns:

- 138 kV dead-end structures, foundations, insulators and jumpers
- Two (2) 138 kV switches 4736 and 4738
- Two (2) motor operated switches MO-4732 and MO-4734
- Metering current transformer CT-1
- Underfrequency relay panel

10. Operational Responsibilities of Each Party:

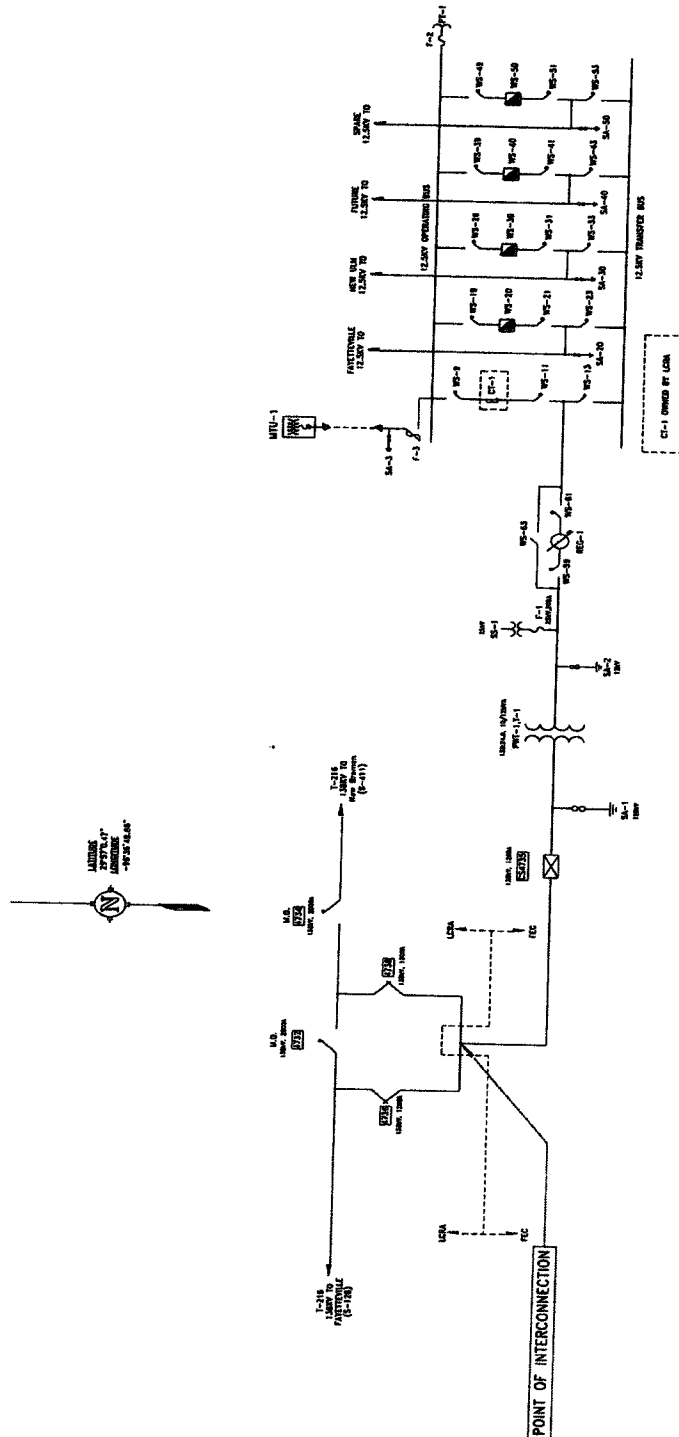
Each Party is responsible for the operation of the equipment it owns.

11. Maintenance Responsibilities of Each Party: Each Party will be fully responsible for the maintenance of the equipment it owns.

12. Other Terms and Conditions: FEC and LCRA TSC are to share access to the substation by FEC and LCRA TSC locks in the gate and in the control house doors.

WILLOW SPRINGS ONE-LINE DIAGRAM

Amendment No. 3



WILLOW SPRINGS SUBSTATION
THIS IS NOT A COMPLETE ONE-LINE DIAGRAM
FOR A COMPLETE ONE-LINE DIAGRAM OF THIS
SUBSTATION, REFER TO DRAWING S273-E-0001.