



Control Number: 35077



Item Number: 291

Addendum StartPage: 0

Project No. 35077

Amendment No. 1

12 APR 13 PM 4:33
PUBLIC UTILITY COMMISSION
FILING CLERK

INTERCONNECTION AGREEMENT

Between

Anacacho Wind Farm, LLC

and

LCRA Transmission Services Corporation

March 30, 2012

**AMENDMENT NO. 1 TO THE
INTERCONNECTION AGREEMENT
BETWEEN
LCRA TRANSMISSION SERVICES CORPORATION
AND
ANACACHO WIND FARM, LLC**

This Amendment No.1 to the Interconnection Agreement between LCRA Transmission Services Corporation and Anacacho Wind Farm, LLC (this "Amendment") is made on this 30th day of March, 2012 by and between LCRA Transmission Services Corporation ("Transmission Service Provider"), and Anacacho Wind Farm, LLC ("Generator"). Transmission Service Provider and Generator are each sometimes hereinafter referred to individually as "Party" or both referred to collectively as "Parties."

WITNESSETH

WHEREAS, Transmission Service Provider and Generator are parties to that certain Interconnection Agreement dated September 21, 2011 (the "Interconnection Agreement");

WHEREAS, the Interconnection Agreement provides terms and conditions that allow for the amendment to the Interconnection Agreement as mutually agreed by the Parties; and

WHEREAS, the Parties have agreed to amend Exhibit "C" concerning the type of generating units; and

WHEREAS, the Parties have agreed to amend the location and size of the substation and to amend other matters as described below.

NOW, THEREFORE, in consideration of the foregoing premises and the mutual covenants set forth herein, the Parties agree as follows:

I. CAPITALIZED TERMS

Capitalized terms used but not otherwise defined herein shall have the meanings specified in the Interconnection Agreement, as amended and supplemented by this Amendment.

II. AMENDMENT TO THE AGREEMENT

- 1) The terms of this Amendment shall become effective on the date first written above, subject to Governmental Authority approval, if required.

- 2) The second sentence of Item 2 of Exhibit "C" is hereby replaced in its entirety with the following sentence:

"The TSP substation is to be located between LCRA TSC structures #370 and #372 (see Exhibit "C4").

- 3) Item 4 of Exhibit "C" (Interconnection Details) of the Interconnection Agreement is hereby amended to read as follows:

"4. Number and size of Generating Units ("Plant"): 99 MW Wind Plant approximately. The plant will consist of 55 Vestas wind turbines rated 1.8 MW each."

- 4) Item 5 of Exhibit "C" (Interconnection Details) of the Interconnection Agreement is hereby amended to read as follows:

"5. Type of Generating Units: Vestas V100 1.8 MW VCSS."

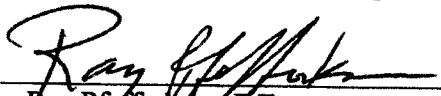
- 5) The date reflected in Item 12(D) of Exhibit "C" (Substation Land, Easements and Access Road Provisions) is hereby deleted and replaced with December 1, 2011.

- 6) Exhibit "C3" (Substation Location) attached to the Interconnection Agreement is hereby deleted and replaced with Amended Exhibit "C3" attached hereto to show the new location and size of the substation.

- 7) Exhibit "C4" (Substation Location Detail) attached to the Interconnection Agreement is hereby deleted and replaced with Amended Exhibit "C4" attached hereto to show the new location and size of the substation.

IN WITNESS WHEREOF, the Parties have caused this Amendment to be executed in two (2) counterparts, each of which shall be deemed an original but both shall constitute one and the same instrument.


LCRA Transmission Services Corporation

By: 
Ray Pfefferkorn, P.E.
Transmission Engineering Manager



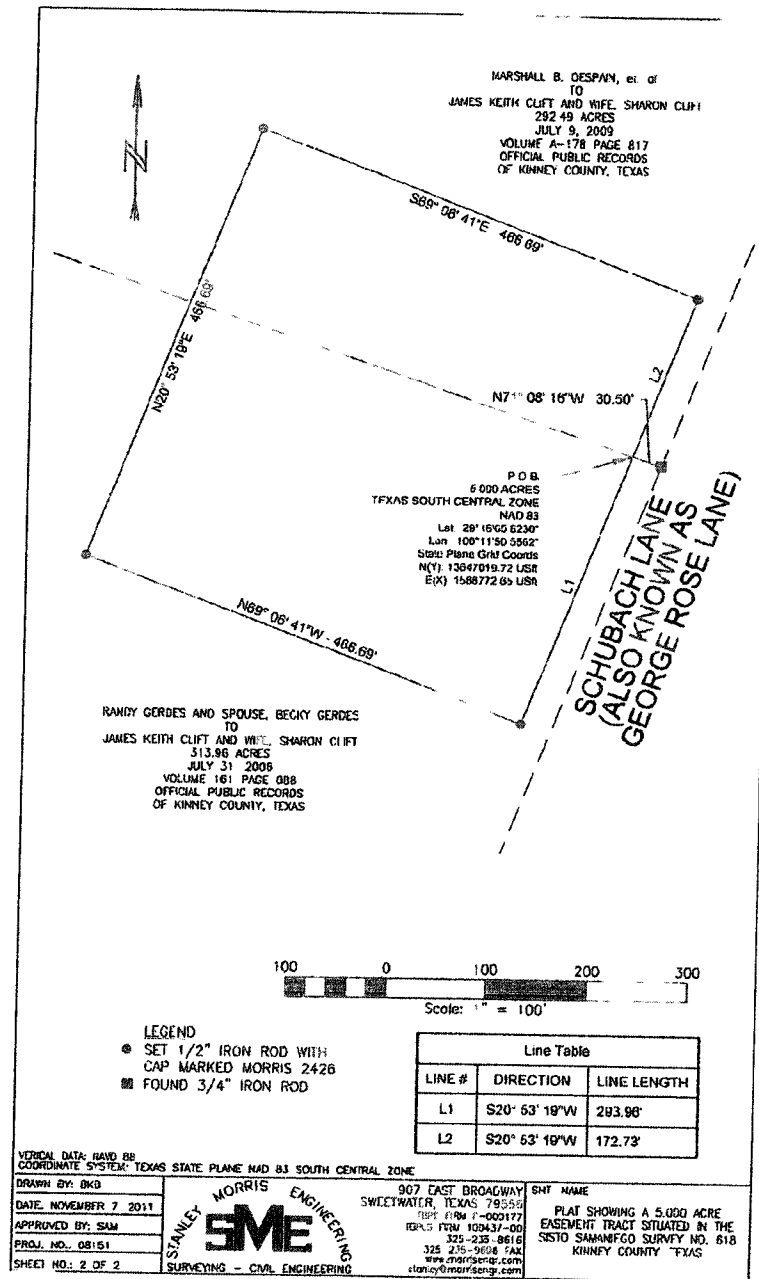
Date: 3/28/12

Anacacho Wind Farm, LLC

By: 
Patrick Woodson
Senior Vice President

Date: 3/30/12

Amended Exhibit "C3" Substation Location



Amended Exhibit "C4"
Substation Location Detail

