

Control Number: 35077



Item Number: 290

Addendum StartPage: 0

**Project No. 35077**

RECEIVED  
12 MAR 30 PM 4:33  
PUBLIC UTILITY COMMISSION  
FILING CLERK

**Second Amendment to**

**INTERCONNECTION AGREEMENT**

**Between**

**City of Hempstead  
and**

**LCRA Transmission Services Corporation**

**Dated**

**March 15, 2012**

290

**SECOND AMENDMENT TO  
INTERCONNECTION AGREEMENT**

This Second Amendment ("Amendment") is made and entered into this 15th day of March, 2012, between the City of Hempstead ("City") and the LCRA Transmission Services Corporation ("LCRA TSC") collectively referred to hereinafter as the Parties.

**WHEREAS**, the LCRA TSC and the City entered into that certain Interconnection Agreement executed June 4, 2008, as amended by that certain Amendment No. 1, executed as of November 17, 2008 and;

**WHEREAS**, the LCRA TSC will install an additional distribution bay on the 12.5 kV buses;

**NOW, THEREFORE**, in consideration of the mutual promises and undertakings herein set forth, the Parties agree to amend the Agreement as follows:

1. Exhibit "A" attached to the Agreement is deleted in its entirety and the Exhibit "A" attached to this Second Amendment is hereby added to the Agreement in lieu thereof.
2. Facility Schedule No. 1 (including the diagrams attached thereto) is deleted in its entirety and Facility Schedule No. 1 attached to this Second Amendment is hereby added to the Agreement in lieu thereof.
3. Facility Schedule No. 1 (including the diagrams attached thereto) attached to this Second Amendment will become effective upon execution of this Second Amendment by the Parties.

Except as otherwise expressly provided for herein, the Agreement will continue in full force and effect in accordance with its terms.

IN WITNESS WHEREOF, the Parties have caused this Second Amendment to be executed in several counterparts, each of which shall be deemed an original but all shall constitute one and the same instrument.

**CITY OF HEMPSTEAD**

By: Michael S. Wolfe

Name: Michael S. Wolfe Sr.

Title: Mayor

Date: March 15, 2012

LCRA TSC - The City of Hempstead-Amendment 1

**LCRA TRANSMISSION SERVICES  
CORPORATION**

By: Ray Pfefferkorn

Name: Ray Pfefferkorn, P.E.

Title: LCRA Transmission Engineering  
Manager

Date: 3/29/12



2

**EXHIBIT A**

[illegible]

**FACILITY SCHEDULE NO. 1**  
**Amendment No. 2**

1. **Name:** Waller Substation
2. **Facility Location:** The Waller Substation is located at 2980 13<sup>th</sup> Street, Hempstead, Waller County, Texas 77445.
3. **Points of Interconnection:** There are nine (9) Points of Interconnection in the Waller Substation generally described as:
  - where the incoming distribution line connects to the jumper, at the dead end insulator, in distribution bay #3.
  - where the incoming distribution line connects to the jumper, at the dead end insulator, in distribution bay #4.
  - where the incoming distribution line connects to the tubular bus between switches WR-91 and WR-93 at breaker WR-90.
  - where the jumper from breaker WR-70 bolts to the four hole pad on switch WR-69.
  - where the jumper from breaker WR-70 bolts to the four hole pad on switch WR-71.
  - where the jumper from breaker WR-80 bolts to the four hole pad on switch WR-79.
  - where the jumper from breaker WR-80 bolts to the four hole pad on switch WR-81.
  - where the jumper from breaker WR-90 bolts to the four hole pad on switch WR-89.
  - where the jumper from breaker WR-90 bolts to the four hole pad on switch WR-91.
4. **Transformation Services Provided by LCRA TSC:** Yes
5. **Metering Services Provided by LCRA TSC:** Yes
6. **Delivery Voltage:** 12.5 kV
7. **Metered Voltage and Location:** The metered voltage is 12.5 kV. The metering current transformer is located inside T-2 and in distribution bay #10. The metering potential transformer is located on the 12.5 kV operating bus.
8. **One Line Diagram Attached:** Yes
9. **Description of Facilities Owned by Each Party:**

City of Hempstead owns:

  - Three (3) distribution circuits including dead-end insulators that attach to the dead-end structure, conductor, and hardware
  - Three (3) distribution circuit breakers WR-70 WR-80 and WR-90 and associated foundations, jumpers, relaying panels and cabling

LCRA TSC owns:

The Waller Substation including, but not limited to, the following items:

- One (1) power transformer T-2 with associated surge arresters
- One (1) circuit switcher CS-6865 with bypass switch 6867 and disconnect switch 6861
- Ten (10) distribution and total bays including A-frames, trusses, insulators, disconnect switches, surge arresters, 12.5 kV operating and transfer buses and bus potential transformers
- One (1) total circuit breakers WR-60
- One (1) metering current transformer CT-10
- Conductor between distribution bay #7 and distribution bay #3
- Conductor between distribution bay #8 and distribution bay #4
- Underfrequency relay panel
- Station Service equipment
- Control house with battery

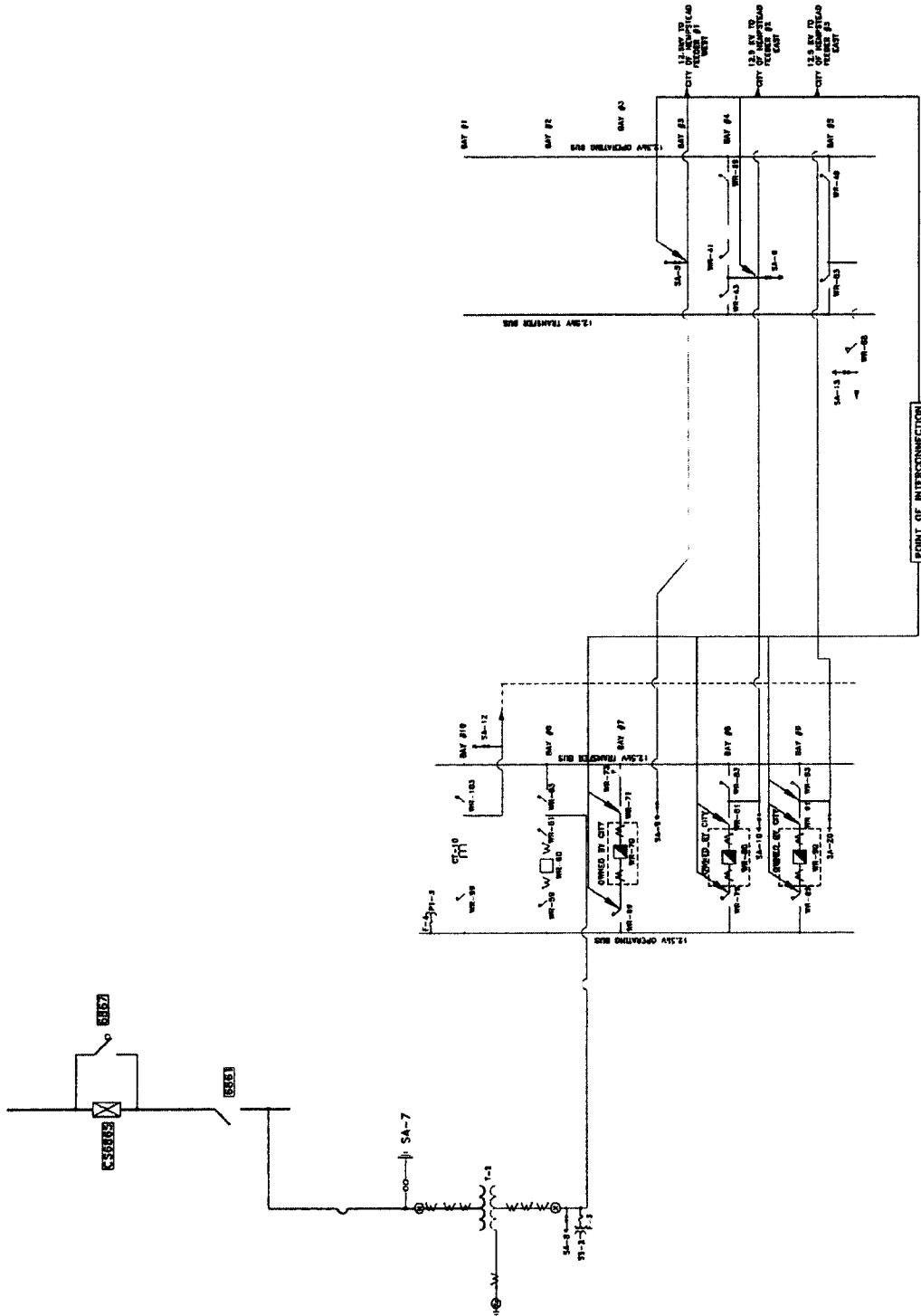
**10. Operational Responsibilities of Each Party:**

- The City will be responsible for the operation of the three (3) distribution circuit breakers serving the City feeders.
- LCRA TSC will be responsible for the operation from the low voltage total breaker through the power transformer to the high voltage equipment.

**11. Maintenance Responsibilities of Each Party:** Each Party will be fully responsible for the maintenance of the equipment it owns.

**12. Other Terms and Conditions:** The City and LCRA TSC are to share access to the substation by LCRA TSC locks in the gate and in the control house doors.

# WALLER ONE-LINE DIAGRAM



WALLER SUBSTATION  
THIS IS NOT A COMPLETE ONE-LINE DIAGRAM  
FOR A COMPLETE ONE-LINE DIAGRAM OF THIS  
SUBSTATION REFER TO DWG. 5230-E-0003

6