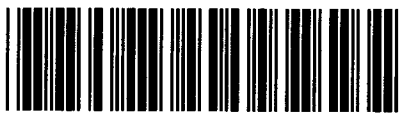




Control Number: 35077



Item Number: 270

Addendum StartPage: 0

**Project No. 35077**

RECEIVED  
11 DEC 20 PM 2:56  
PUBLIC UTILITY COMMISSION  
FILING CLERK

**Fourth Amendment to**

**INTERCONNECTION AGREEMENT**

**Between**

**Guadalupe Valley Electric Cooperative  
and**

**LCRA Transmission Services Corporation**

**Dated**

**December 19, 2011**

**FOURTH AMENDMENT TO  
INTERCONNECTION AGREEMENT**

This Fourth Amendment ("Amendment") is made and entered into this 19<sup>th</sup> day of Dec-, 2011, between the Guadalupe Valley Electric Cooperative, Inc. ("GVEC") and the LCRA Transmission Services Corporation ("LCRA TSC") collectively referred to hereinafter as the Parties.

**WHEREAS**, the LCRA TSC and GVEC entered into that certain Interconnect Agreement executed February 8, 2011; as amended by that certain Amendment No. 1, executed as of August 26, 2001; as amended by that certain Amendment No. 2, executed as of October 13, 2011; as amended by that certain Amendment No. 3, executed as of November 30, 2011 (collectively, as amended, the "Agreement"); and

**WHEREAS**, GVEC is adding the Mont Substation where LCRA TSC will have transmission equipment

**NOW, THEREFORE**, in consideration of the mutual promises and undertakings herein set forth, the Parties agree to amend the Agreement as follows:

1. Exhibit "A" is deleted in its entirety and the Exhibit "A" attached to this Fourth Amendment is hereby added to the Agreement in lieu thereof.
2. Facility Schedule No. 22 (including the diagrams attached thereto) attached to this Fourth Amendment is hereby added to the Agreement.
3. Facility Schedule No. 22 (including the diagrams attached thereto) attached to this Fourth Amendment will become effective upon execution of this Fourth Amendment by the Parties.

Except as otherwise expressly provided for herein, the Agreement will continue in full force and effect in accordance with its terms.

----The remainder of this page has intentionally been left blank----

IN WITNESS WHEREOF, the Parties have caused this Fourth Amendment to be executed in several counterparts, each of which shall be deemed an original but all shall constitute one and the same instrument.

GUADALUPE VALLEY ELECTRIC  
COOPERATIVE, INC.

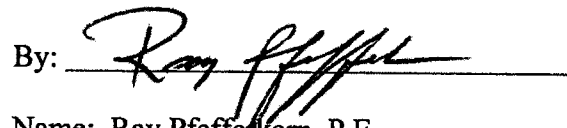
By: 

Name: Robert B. Christmas

Title: Engineering & Operations Manager  
and Chief Operating Officer

Date: 12-14-2011

LCRA TRANSMISSION SERVICES  
CORPORATION

By: 

Name: Ray Pfefferkorn, P.E.

Title: LCRA Transmission  
Engineering Manager

Date: 12/19/11

---The remainder of this page has intentionally been left blank---



**Exhibit A**  
**Amendment No. 4**

<b>FACILITY SCHEDULE NO.</b>	<b>LOCATION OF POINT(S) OF INTERCONNECTION (# of Points)</b>	<b>INTERCONNECTION VOLTAGE (KV)</b>	<b>EFFECTIVE DATE OF INTERCONNECTION</b>
1	Cuero (18)	12.5 kV	8/26/2011
2	Geronimo (3)	138 kV	2/8/2011
3	Gonzales (2)	138 kV	2/8/2011
4	Hallettsville (2)	138 kV	2/8/2011
5	FM 237 Yorktown	69 kV	2/8/2011
6	Marion (2)	138 kV	8/26/2011
7	LCRA Nixon (3)	69 kV	2/8/2011
8	Parkway (6)	138 kV	2/8/2011
9	Schumansville (1)	138 kV	2/8/2011
10	Seguin (6)	138 kV	2/8/2011
11	Seguin West (6)	138 kV	2/8/2011
12	Sweet Home (6)	24.9 kV	2/8/2011
13	Thompsonville (3)	4.16 kV	2/8/2011
14	Waelder (6)	12.5 kV	2/8/2011
15	Weiderstein (2)	138 kV	2/8/2011
16	Yoakum-Gartner (11)	12.5 kV	2/8/2011
17	York Creek (1)	138 kV	2/8/2011
18	Cheapside (2)	138 kV	2/8/2011
19	Pilot Grove (2)	138 kV	8/26/2011
20	Nordheim-West (1)	69 kV	October 21, 2011
21	Lost Creek (3)	69 kV	11/30/2011
22	Mont (1)	138 kV	Date of 4 <sup>th</sup> amendment
23			
24			
25			
26			
27			
28			
29			
30			
31			
32			
33			
34			
35			

**FACILITY SCHEDULE NO. 22**  
**Amendment No. 4**

1. **Name:** Mont Substation
2. **Facility Location:** The Mont Substation is located at 983 CR 171, Hallettsville, Texas 78964, Lavaca County .
3. **Points of Interconnection:** There is (1) Point of Interconnection in the Mont Substation generally described as:
  - where the 138 kV operating bus connector bolts to the four hole pad on switch 24034
4. **Transformation Services Provided by LCRA TSC:** No
5. **Metering Services Provided by LCRA TSC:** Yes
6. **Delivery Voltage:** 138 kV
7. **Metered Voltage and Location:** The metering voltage is 24.9 kV. The metering current transformer is located inside T-1. The bus potential transformer is located on the 24.9 kV operating bus.
8. **One Line Diagram Attached:** Yes
9. **Description of Facilities Owned by Each Party:**

GVEC owns:

The Mont Substation including, but not limited to, the following items:

  - One (1) circuit switcher CS-24035 with associated disconnect switch 24034
  - One (1) 138 kV mobile disconnect switch 24044
  - One (1) power transformer T-1 with associated surge arresters
  - One (1) 24.9 kV transformer bus disconnect switch MT01
  - All distribution circuits including dead end insulators that attach to the dead end structure, conductors, and hardware
  - All distribution circuit breakers including jumpers, protective relay packages and foundations.
  - All distribution and total bays including A-frames, trusses, insulators, disconnect switches, surge arresters, 24.9 kV operating and transfer bus, bus potential transformer and associated cabling
  - One (1) MTU, MTU1 with associated fused disconnects F2 and F4
  - Station service, SS-1 and fuse F-1
  - Control house (24' x 36')
  - Batteries and battery charger

LCRA TSC owns:

- Two (2) 138 kV dead-end structures, foundations, insulators and jumpers
- Two (2) CCVTs, CCVT-1 and CCVT-2
- Two 138 kV surge arresters SA-1 and SA-2
- 138 kV bus including support structures, foundations and jumpers
- Two (2) 138 kV circuit breakers 24030 and 24040 including jumpers, protective relay packages and foundations
- Six (6) 138 kV disconnect switches 24029, 24031, 24033, 24039, 24041, and 24043

**10. Operational Responsibilities of Each Party:** Each Party is responsible for the operation of the equipment it owns.

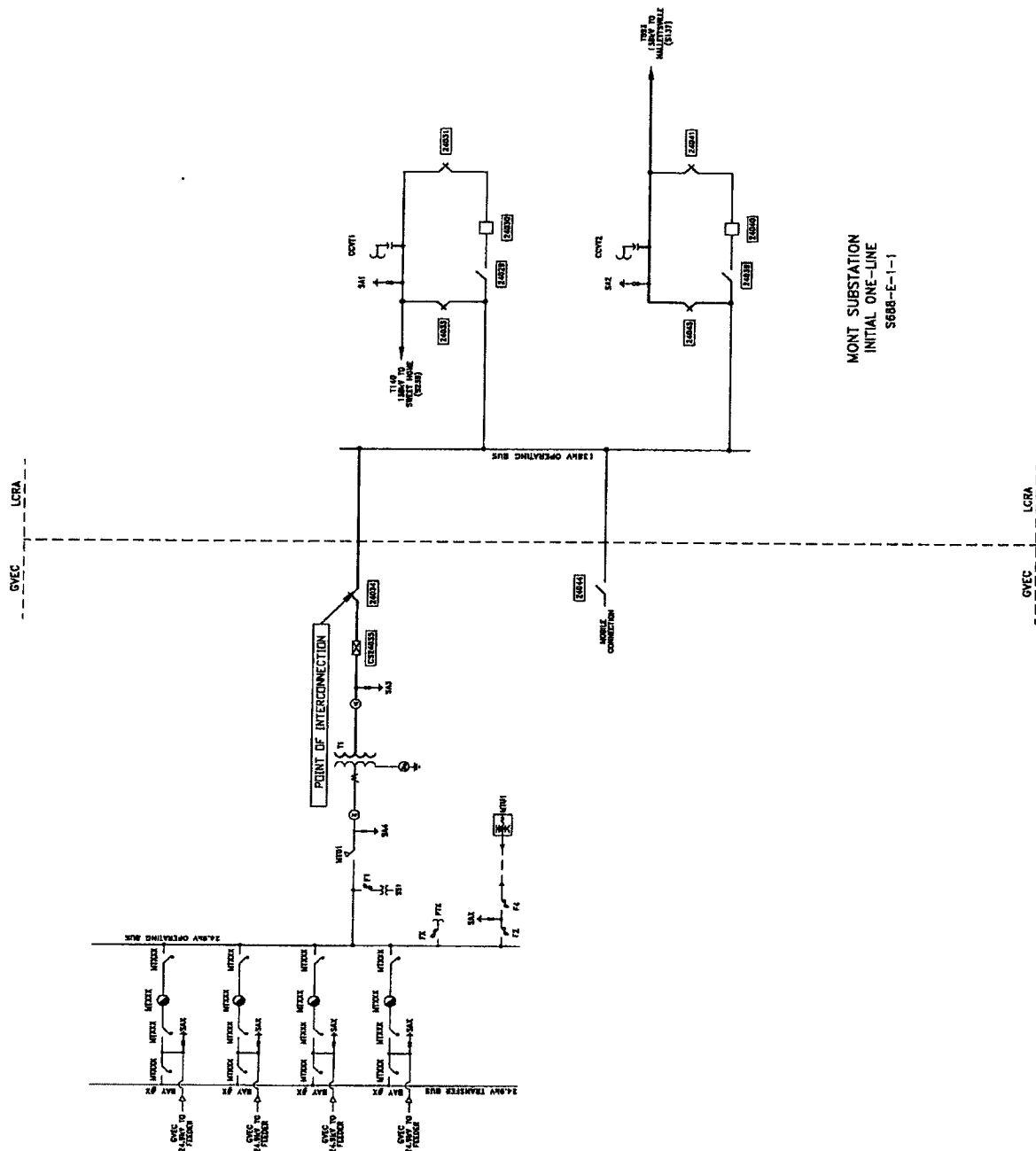
**11. Maintenance Responsibilities of Each Party:** Each Party will be fully responsible for the maintenance of the equipment it owns.

**12. Other Terms and Conditions:**

- GVEC and LCRA TSC are to share access to the substation by LCRA TSC locks in the gate and in the control house doors.
- GVEC will purchase and provide to LCRA TSC the necessary transmission line easements into the substation in a form acceptable to LCRA TSC.

# MONT ONE-LINE DIAGRAM

Amendment No. 4



MONT SUBSTATION  
INITIAL ONE-LINE  
S688-E-1-1