

Control Number: 35077



Item Number: 266

Addendum StartPage: 0

**Project No. 35077**

**Second Amendment to**

**INTERCONNECTION AGREEMENT**

**Between**

**Bandera Electric Cooperative, Inc.  
and**

**LCRA Transmission Services Corporation**

RECEIVED  
11 NOV 10 PM 4:52  
FILING CLERK

**Dated**

**September 24, 2011**

266

**SECOND AMENDMENT TO  
INTERCONNECTION AGREEMENT**

This Second Amendment ("Amendment") is made and entered into this 24<sup>th</sup> day of September, 2011, between the Bandera Electric Cooperative, Inc. ("BEC") and the LCRA Transmission Services Corporation ("LCRA TSC") collectively referred to hereinafter as the Parties.

**WHEREAS**, the LCRA TSC and the BEC entered into that certain Interconnect Agreement executed January 19, 2010, as amended by that certain Amendment No. 1 executed as of December 19, 2010 (collectively, as amended, the "Agreement"); and

**WHEREAS**, the LCRA TSC will add a mobile transformer connection to the distribution bays at Boerne-Cico Substation; and

**WHEREAS**, the BEC will install two 138 kV circuit breakers at Mason Creek Substation;

**NOW, THEREFORE**, in consideration of the mutual promises and undertakings herein set forth, the Parties agree to amend the Agreement as follows:

1. Exhibit "A" is deleted in its entirety and the Exhibit "A" attached to this Second Amendment is hereby added to the Agreement in lieu thereof.
2. Exhibit "A" attached to this Second Amendment will become effective upon execution of this Second Amendment by the Parties.
3. Facility Schedule No. 2 (including the diagrams attached thereto) is deleted in its entirety and Facility Schedule No. 2 attached to this Second Amendment is hereby added to the Agreement in lieu thereof.
4. Facility Schedule No. 2 (including the diagrams attached thereto) attached to this Second Amendment will become effective upon execution of this Second Amendment by the Parties.
5. Facility Schedule No. 12 one line drawing is deleted in its entirety and Facility Schedule No. 12 one line drawing attached to this Second Amendment is hereby added to the Agreement in lieu thereof.
6. Facility Schedule No. 12 one line drawing attached to this Second Amendment will become effective upon execution of this Second Amendment by the Parties.

Except as otherwise expressly provided for herein, the Agreement will continue in full force and effect in accordance with its terms.

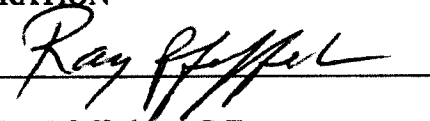
---The remainder of this page has intentionally been left blank---

IN WITNESS WHEREOF, the Parties have caused this Second Amendment to be executed in several counterparts, each of which shall be deemed an original but all shall constitute one and the same instrument.

BANDERA ELECTRIC COOPERATIVE, INC.

LCRA TRANSMISSION SERVICES CORPORATION

By: 

By: 

Name: Brian D. Bartos', P.E.

Name: Ray Pfefferkorn, P.E.

Title: Manager, Engineering & operations

Title: LCRA Transmission Engineering Manager

Date: 9/24/11

Date: 9/6/11



**EXHIBIT A**  
Second Amendment

FACILITY SCHEDULE NO.	LOCATION OF POINT(S) OF INTERCONNECTION (# of Points)	INTERCONNECTION VOLTAGE (kV)	EFFECTIVE DATE OF INTERCONNECTION
1	Boerne (8)	12.5/138 kV	1/19/2010
2	Boerne Cico (5)	12.5/24.9/138 kV	Date of 2 <sup>nd</sup> Amendment
3	Cypress Creek (1)	138 kV	1/19/2010
4	Leakey (1)	69 kV	12/19/2010
5	Medina Lake (1)	138 kV	1/19/2010
6	Menger Creek (6)	12.5 kV	1/19/2010
7	Pipe Creek (0)		1/19/2010
8	Turtle Creek (1)	138 kV	1/19/2010
9	Verde Creek (2)	138 kV	12/19/2010
10	Welfare (2)	138 kV	1/19/2010
11	Bandera (0)		12/19/2010
12	Mason Creek (0)		Date of 2 <sup>nd</sup> Amendment
13	Medina City (0)		1/19/2010
14	Tarpley (0)		1/19/2010
15	Utopia (0)		1/19/2010

**FACILITY SCHEDULE NO. 2**  
**Second Amendment**

1. **Name:** Boerne Cico Substation
2. **Facility Location:** The Boerne Cico Substation is located at 234 SH 46 West, Boerne, Kendall County, Texas 78006.
3. **Points of Interconnection:** There are five (5) Points of Interconnection in the Boerne Cico Substation generally described as:
  - where the Boerne-Cico to Pipe Creek transmission line terminates at the dead end insulator in bay #1.
  - where the PWT-3, T-4; 12.5 kV transformer wire bus, passing through the dead end termination, bolts to the four hole pad on switch BC-21.
  - where the jumper from switch BC-23 attaches to the PWT-3, T-4; 12.5 kV transformer wire bus with a parallel grove connector.
  - where the PWT-2, T-3; 24.9 kV transformer wire bus, passing through the dead end termination, bolts to the four hole pad on switch BC-11.
  - where the jumper from switch BC-13 attaches to the PWT-2, T-3; 24.9 kV transformer wire bus with a parallel grove connector.
4. **Transformation Services Provided by LCRA TSC:** Yes
5. **Metering Services Provided by LCRA TSC:** Yes
6. **Delivery Voltage:** 12.5/24.9/138 kV
7. **Metered Voltage and Location:** The metering voltage is 12.5 kV and 24.9 kV. The metering current transformers are located in the 12.5 kV total bay and the 24.9 kV total bay. The bus potential transformers are located on the 12.5 kV operating bus and 24.9 kV operating bus.
8. **One Line Diagram Attached:** Yes
9. **Description of Facilities Owned by Each Party:**

BEC owns:

  - The following transmission line comprised of conductors, insulators, and connecting hardware:
    - Boerne Cico to Pipe Creek transmission line
  - All distribution circuits including dead end insulators that attach to the dead end structure, conductors, and hardware
  - All distribution circuit breakers including jumpers, protective relay packages and foundations

- All distribution and total bays including A-frames, trusses, insulators, disconnect switches(except for four LCRA TSC mobile transformer disconnect switches), surge arresters, operating and transfer buses, bus potential transformers and associated cabling
- Six (6) single phase voltage regulators REG-2 and REG-3 with associated disconnect and bypass switches
- Two (2) MTUs with associated fuses F-8 and F-9
- Control house (21' X 24') and battery

LCRA TSC owns:

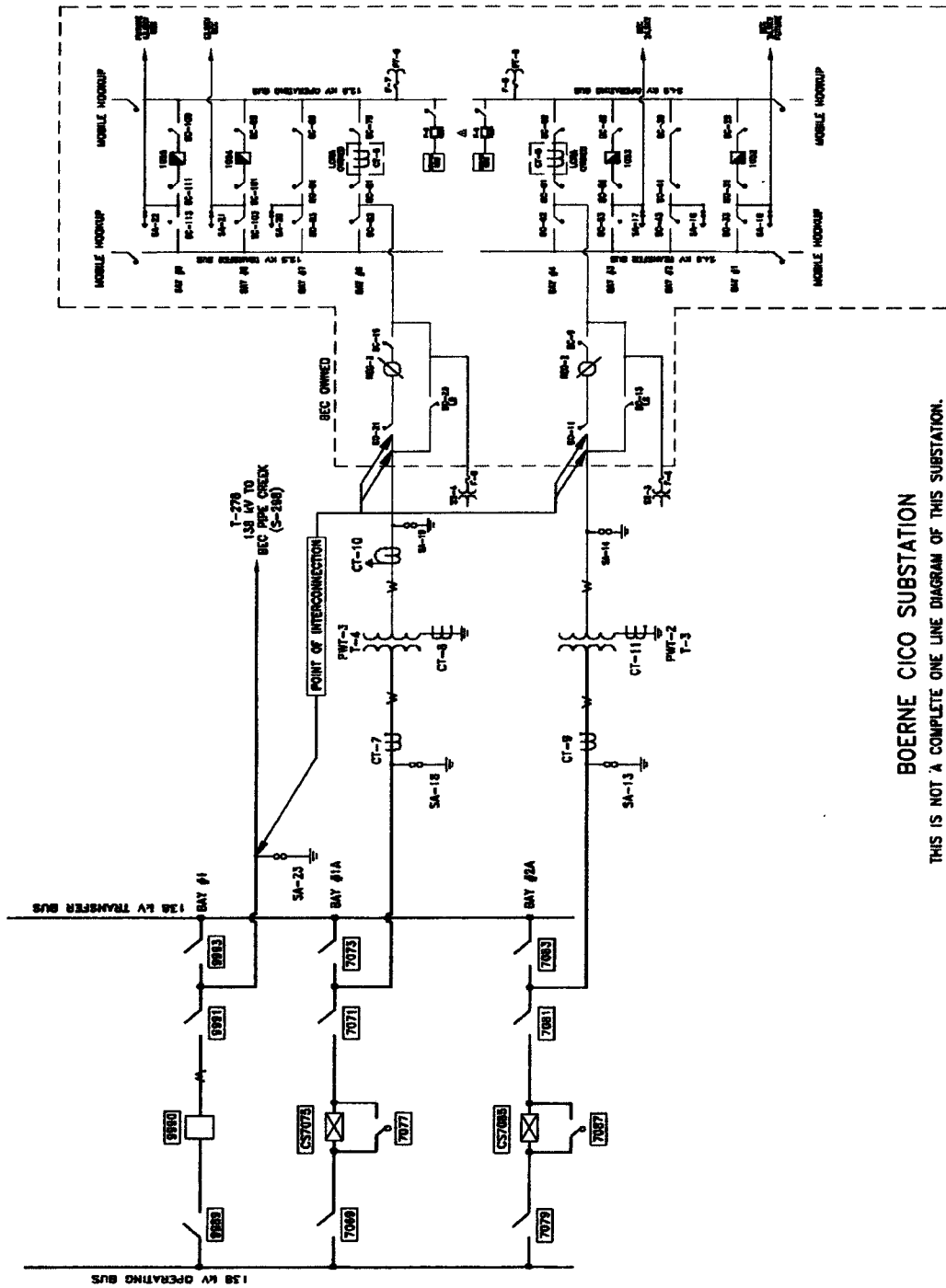
The Boerne Cico Substation including, but not limited to, the following items:

- 138 kV dead-end structures, foundations, insulators and jumpers
- 138 kV operating and transfer bus including structures, foundations and jumpers
- One (1) 138 kV circuit breaker 9990 including jumpers and protective relay package
- Nine (9) 138 kV switches 7069, 7071, 7073, 7079, 7081, 7083, 9989, 9991, 9993
- Two (2) circuit switchers CS-7075 and CS-7085 with associated bypass switches 7077 and 7087
- Two (2) power transformers PWT-2, T-3 and PWT-3, T-4 and associated surge arresters
- One (1) 138 kV surge arrester SA-23
- Three (3) relaying current transformers CT-7, CT-9 and CT-10
- Two (2) metering current transformers CT-5 and CT-6
- Two (2) single phase relaying current transformers CT-8 and CT-11
- Four (4) 15 kV mobile transformer disconnect switches
- Two (2) station service SS-3 and SS-4
- Control house (24' X 32') and battery bank

10. **Operational Responsibilities of Each Party:** Each Party is responsible for the operation of the equipment it owns.
11. **Maintenance Responsibilities of Each Party:** Each Party will be fully responsible for the maintenance of the equipment it owns.
12. **Other Terms and Conditions:** BEC and LCRA TSC are to share access to the substation by LCRA TSC locks in the gate and in the control house doors.

# BOERNE CICO ONE-LINE DIAGRAM

## Second Amendment

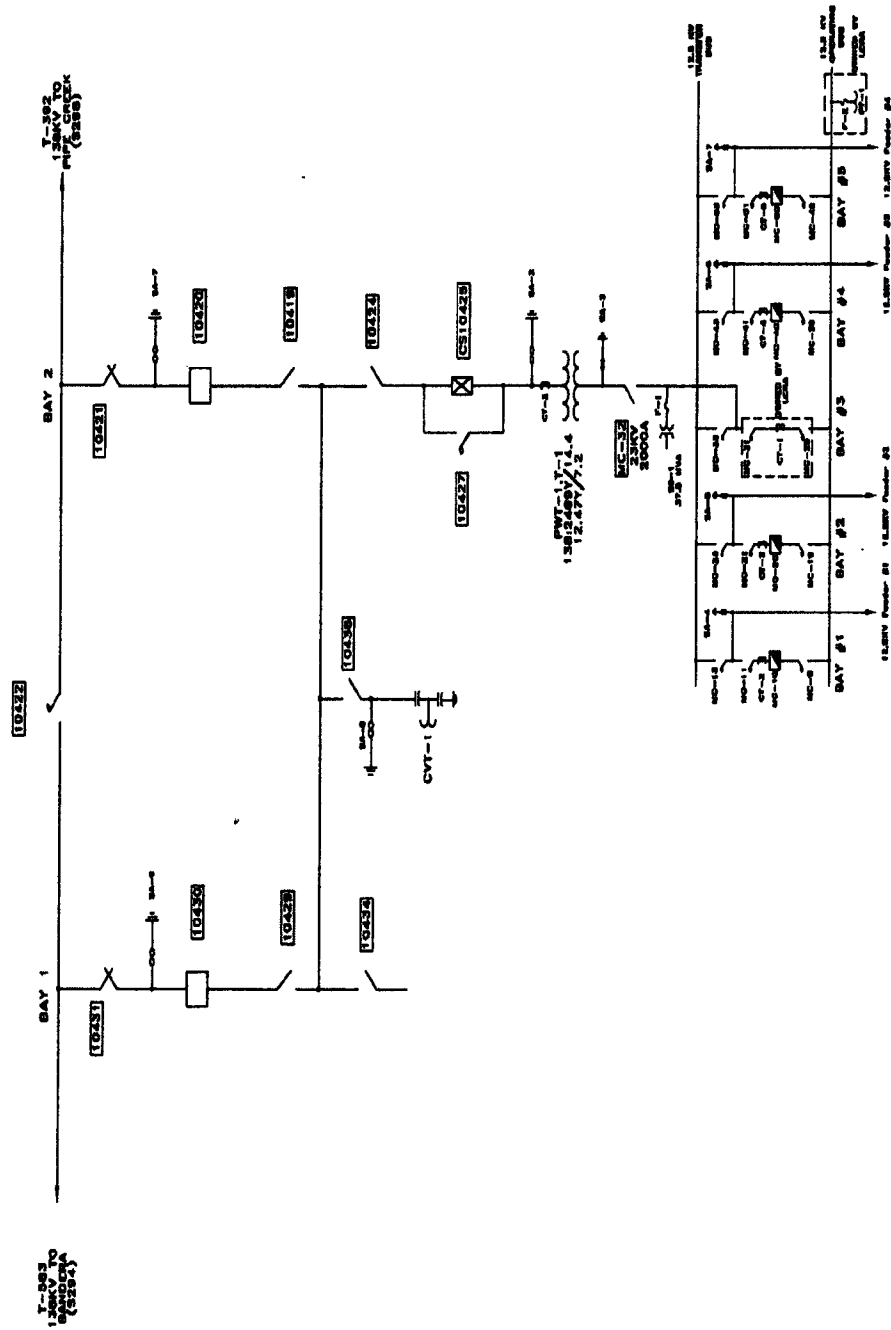


BOERNE CICO SUBSTATION  
 THIS IS NOT A COMPLETE ONE LINE DIAGRAM OF THIS SUBSTATION.  
 REFER TO DRAWING S105-E-0012



# MASON CREEK ONE-LINE DIAGRAM

## Second Amendment



MASON CREEK SUBSTATION  
 THIS IS NOT A COMPLETE ONE-LINE DIAGRAM  
 FOR A COMPLETE ONE-LINE DIAGRAM OF THIS  
 SUBSTATION, REFER TO DRAWING S406-E-0009.