



Control Number: 35077



Item Number: 263

Addendum StartPage: 0

PUC Project No. 35077

Amendment to Interconnection Agreement

Between

City of Austin (Austin Energy)

and

LCRA Transmission Services Corporation

RECEIVED
11 NOV 10 PM 4:52
FILING CLERK
PUBLIC UTILITIES COMMISSION

August 15, 2011

263

AMENDMENT TO INTERCONNECTION AGREEMENT

This Amendment ("Amendment") to the Interconnection Agreement (the "Agreement"), dated December 17, 1999, between the City of Austin acting by and through its Electric Utility Department doing business as Austin Energy ("Austin Energy") and the LCRA Transmission Services Corporation ("LCRA TSC"); subsequently amended on January 1, 2001; September 1, 2001; October 5, 2006; November 10, 2008 and amended again on March 28, 2011 is made and entered into this 15th day of August, 2011, between Austin Energy and the LCRA TSC, collectively referred to hereinafter as the Parties. In consideration of the mutual promises and undertakings herein set forth, the Parties agree to amend the Agreement as follows:

1. Exhibit A attached to the Amendment of March 28, 2011 is deleted in its entirety and Exhibit A attached to this Amendment is hereby added to the Agreement in lieu thereof.
2. Facility Schedule No. 7 (new) attached to this Amendment (including the one-line diagram and drawings attached thereto) is hereby added to the Agreement.
3. Facility Schedule No. 7 will become effective upon execution of this Amendment by the Parties. Unless otherwise agreed by the Parties, the Lakeway Interconnection will not be placed into service under Facility Schedule No. 7 until the Parties have completed the installation and testing of all equipment to be furnished for the Lakeway interconnection in accordance with the provisions contained in Facility Schedule No. 7.
4. Except as otherwise expressly provided for herein, the Agreement will continue in full force and effect in accordance with its terms.

This Amendment constitutes the entire agreement and understanding between the Parties with regard to the interconnection of the facilities of the Parties at the Lakeway Interconnection defined in this Amendment. The Parties are not bound by or liable for any statement, representation, promise, inducement, understanding, or undertaking of any kind or nature (whether written or oral) with regard to the subject matter hereof not set forth or provided for herein. This Amendment replaces all prior agreements and undertakings, oral or written, between the Parties with regard to the subject matter hereof and all such agreements and undertakings are agreed by the Parties to no longer be of any force or effect. It is expressly acknowledged that the Parties may have other agreements covering other services not expressly provided for herein, which agreements are unaffected by this Amendment.

- Remainder of page has intentionally been left blank. -

IN WITNESS WHEREOF, the Parties have caused this Amendment to be executed in several counterparts, each of which shall be deemed an original but all shall constitute one and the same instrument.

City of Austin
d/b/a Austin Energy

LCRA Transmission Services Corporation



By: [Signature]

By: [Signature]

By: David Wood

By: _____

Typed Name: David Wood, P.E.
Title: Vice-President
Electric Service Delivery

Typed Name: Ray Pfefferkorn, P.E.
Title: Transmission Engineering Manager

Date: 8/15/11

Date: 8/8/11



EXHIBIT A

LIST OF FACILITY SCHEDULES AND POINTS OF INTERCONNECTION

<u>Facility Schedule No.</u>	<u>Name of Point of Interconnection</u>
1	Trading Post
2	Garfield – Bastrop Energy Partners
3	Jollyville (temporary PEC PWT) – No Longer In Place
4	Wells Branch
5	Lytton Springs
6	Elroy
7	Lakeway

FACILITY SCHEDULE NO. 7

1. **Name:** Lakeway
2. **Lakeway Interconnection location:** The Lakeway Interconnection is comprised of six (6) points of interconnection as set forth below. The Lakeway Interconnection is geographically located at Austin Energy's Lakeway Substation ("Substation") on property owned by Austin Energy and on or at LCRA TSC structures located in the vicinity of the Lakeway Tap. The Substation will be looped into the existing LCRA TSC 138 kV transmission line which runs from the Marshall Ford Substation to the Bee Creek Substation. The Substation is located at 15310 Kollmeyer Drive, which is at the intersection of Kollmeyer Drive and O'Reilly Road, in Austin, TX 78734. Specifically, the six (6) points of interconnection comprising the Lakeway Interconnection are to be found in the following locations:
 - where the LCRA TSC jumper, from the LCRA TSC 138 kV bus, connects to the four hole pad on Austin Energy's 138 kV circuit switcher LW600M;
 - where the LCRA TSC jumper, from the LCRA TSC 138 kV bus, connects to the four hole pad on Austin Energy's 138 kV circuit switcher LW601M;
 - where the jumper connector, on LCRA TSC's jumper from LCRA TSC's 138 kV transmission line, connects to Austin Energy's 138 kV transmission line, near LCRA TSC structure #15C, approximately .43 miles from the Substation;
 - where the LCRA TSC jumper connector, on LCRA TSC's jumper from LCRA TSC's 138 kV transmission line, connects to Austin Energy's 138 kV transmission line, near LCRA TSC structure #15E approximately .43 miles from the Substation;
 - where the LCRA TSC jumper connector, on LCRA TSC's jumper from LCRA TSC's 138 kV substation bus, connects to Austin Energy's 138 kV transmission line, at Austin Energy's dead-end structure ("AE Structure #7") inside the Substation; and
 - where the LCRA TSC jumper connector, on LCRA TSC's jumper from LCRA TSC's 138 kV substation bus, connects to the Austin Energy 138 kV transmission line, at LCRA TSC's dead-end structure #25 inside the Substation.
3. **Delivery voltage:** 138 kV
4. **Metering (voltage, location, losses adjustment due to metering location, and other):** All required ERCOT metering will be installed and owned by Austin Energy inside the Substation and this metering will be designed and installed in accordance with the ERCOT Operating Guides. Metering will be accomplished using 12.47 kV potential and current metering accuracy instrument transformers located in the Substation. The primary and backup meters will be equipped to compensate for and allocate losses to the transmission grid.
5. **Normally closed?** Yes
6. **One line diagram attached?** Yes
7. **Austin Energy owns the facilities and is responsible for the functions listed below:**
 - 138 kV T-179 transmission line section including structures, conductors, dead-end insulators and hardware from the Lakeway Tap box structure, through the point of interconnection at LCRA TSC's structure #15C, to the point of interconnection at LCRA TSC's dead-end structure #25 inside the Substation;

- 138 kV T-525 transmission line section including structures, conductors, dead-end insulators and hardware from the point of interconnection at LCRA TSC's structure #15E to the point of interconnection at AE Structure #7 inside Substation;
- One (1) 138 kV 3-phase dead-end pole structure, (AE Structure #7), inside the Substation;
- Two (2) 138 kV circuit switchers LW600M and LW601M, with integrated disconnect switch and minimum 25 kA fault-interrupting rating;
- Two (2) 138/12.47 kV, 30 MVA power transformers LW-123 and LW-456, with surge arresters, serving the onsite customer;
- Two (2) PWT bushing slip-over set multi-ratio CT's for bus differential;
- Two (2) 12.47 kV switchgear;
- Control house with 125 Vdc batteries, battery charger, AC & DC distribution panels, automatic transfer switch for station service, air conditioner, relays, control panels, cables, conduits and other appurtenances;
- RTU with communications equipment;
- 48 Fiber OPGW cable on T-525 line section. Austins OPGW runs from LCRA TSC's structure 15 to AE Structure #7 and then jumpers to LCRA TSC's Lakeway Substation H-frame bus structure.
- Associated structures, foundations, relays, controls, cables and conduits;
- Associated ground grid, graveling, fence, SPCC plan; and
- Substation property provided by Austin Energy.
- Austin Energy will provide panel space in the AE control house for LCRA TSC equipment as necessary and will modify existing AE panels to make 120/240 Vac and 125 Vdc power sources available for new panels installed by LCRA TSC."

Austin Energy will exchange signals and connections at the Substation as required for LCRA TSC SCADA.

8. LCRA TSC owns and is responsible for the functions associated with the facilities listed below:

- Two (2) x 3-poles, 138 kV single phase dead-end structures (structures 15C & 15E) including dead-end insulators for LCRA TSC's conductors and jumpers to the Lakeway Interconnection near Lakeway Tap;
- One (1) box structure at Lakeway Tap;
- Three (3) 138 kV 3-phase dead-end pole structures (str # 25 plus 2 un-numbered structures) including 138 kV substation bus, dead-end insulators for LCRA TSC's conductors and jumpers to Austin Energy's 138 kV transmission lines at the Lakeway Interconnection inside the Substation;
- Two (2) 138 kV dead-end H-frame bus structures inside the Substation;
- One (1) 138 kV dead-end A-frame inside the Substation;
- 138 kV operating bus, including jumpers to Austin Energy's 138 kV circuit switchers;
- Three (3) 138 kV 2000A circuit breakers 19920, 19930 and 19940 with minimum 40 kA fault-interrupting rating;
- Nine (9) 138 kV switches 19919, 19921, 19924, 19926, 19928, 19929, 19931, 19939 and 19941;
- Three (3) sets of three phase 138kV surge arrestors SA-5, SA-6 and SA-7;
- Associated structures, insulators, foundations, ground grid, permitting and grading;
- Two (2) sets of three phase coupling capacitor voltage transformers CCVT1 and CCVT2;
- Line relaying, bus differential, breaker failure relaying, and associated panels; and
- RTU with communications equipment, splice cans and coil brackets at 1) LCRA TSC's structure 15 and 2) LCRA TSC's Lakeway Substation H-frame bus structure, facility entry cable from splice can to control house and patch panel. .

LCRA TSC will exchange signals and connections at the Substation as required for Austin Energy SCADA.

9. Operation and Maintenance:

- Each Party will be responsible for the maintenance of the facilities it owns.
- Austin Energy will direct and coordinate all switching for Austin Energy's Substation facilities, including their 138 kV circuit switchers with integrated 138 kV disconnect switches and distribution facilities. These facilities will not be locked or switched by LCRA TSC.
- LCRA TSC will direct and coordinate all switching for LCRA TSC's facilities which include the 138 kV transmission lines, 138 kV circuit breakers and associated 138 kV disconnect switches, 138 kV bus and bus differential. These facilities will not be locked or switched by Austin Energy.
- LCRA TSC will direct and coordinate all switching for, the approximately .43 mile section of Austin Energy transmission line from the Substation point of interconnection to the point of interconnection near Lakeway Tap. These facilities will not be locked or switched by Austin Energy.

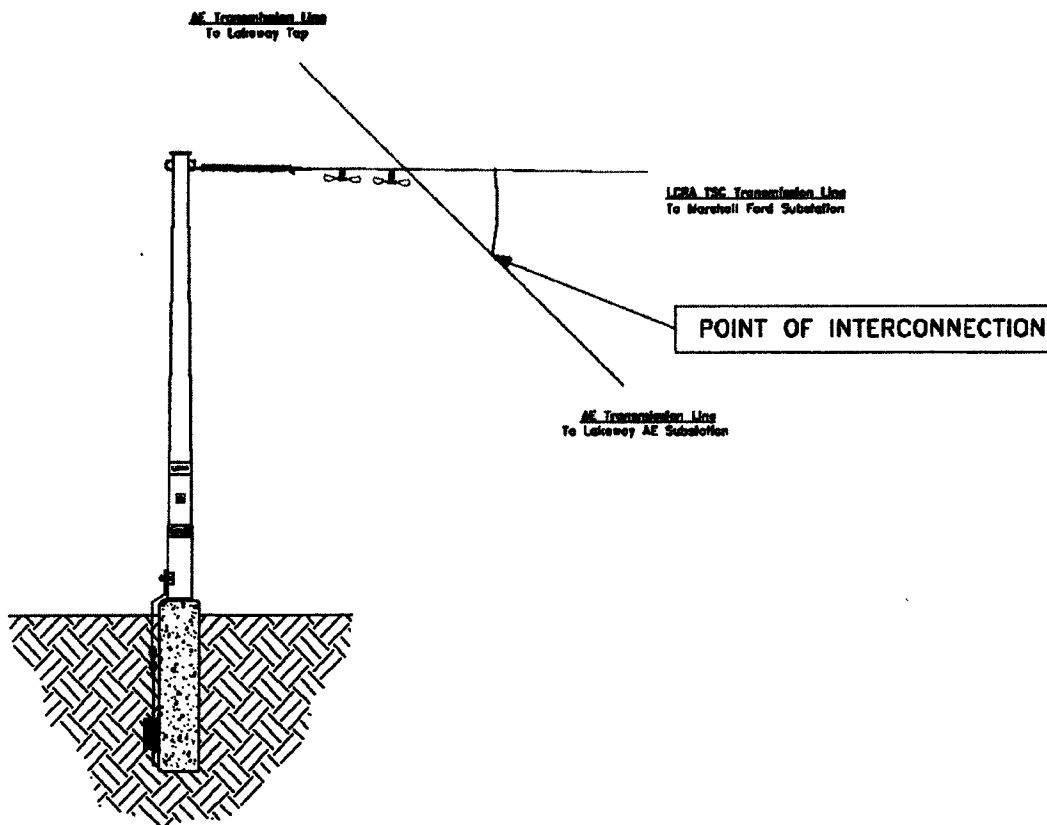
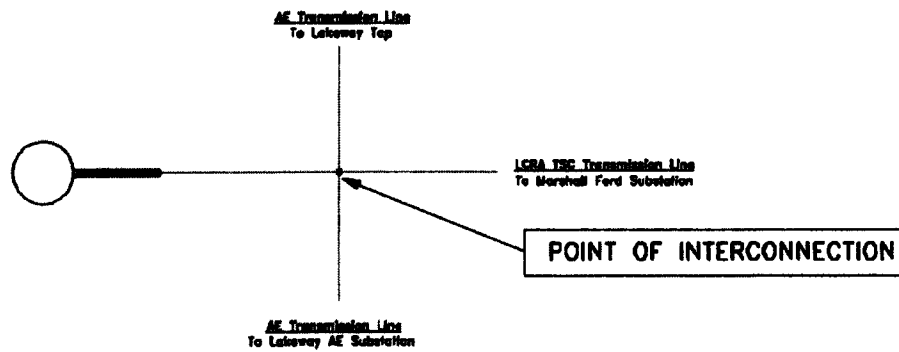
10. Cost Responsibility:

- Each Party will be fully responsible for the costs and liabilities associated with the facilities it owns.
- Each Party will be responsible for all costs it incurs in connection with the establishment and maintenance of each point of interconnection associated with the Lakeway Interconnection in accordance with this Facility Schedule.

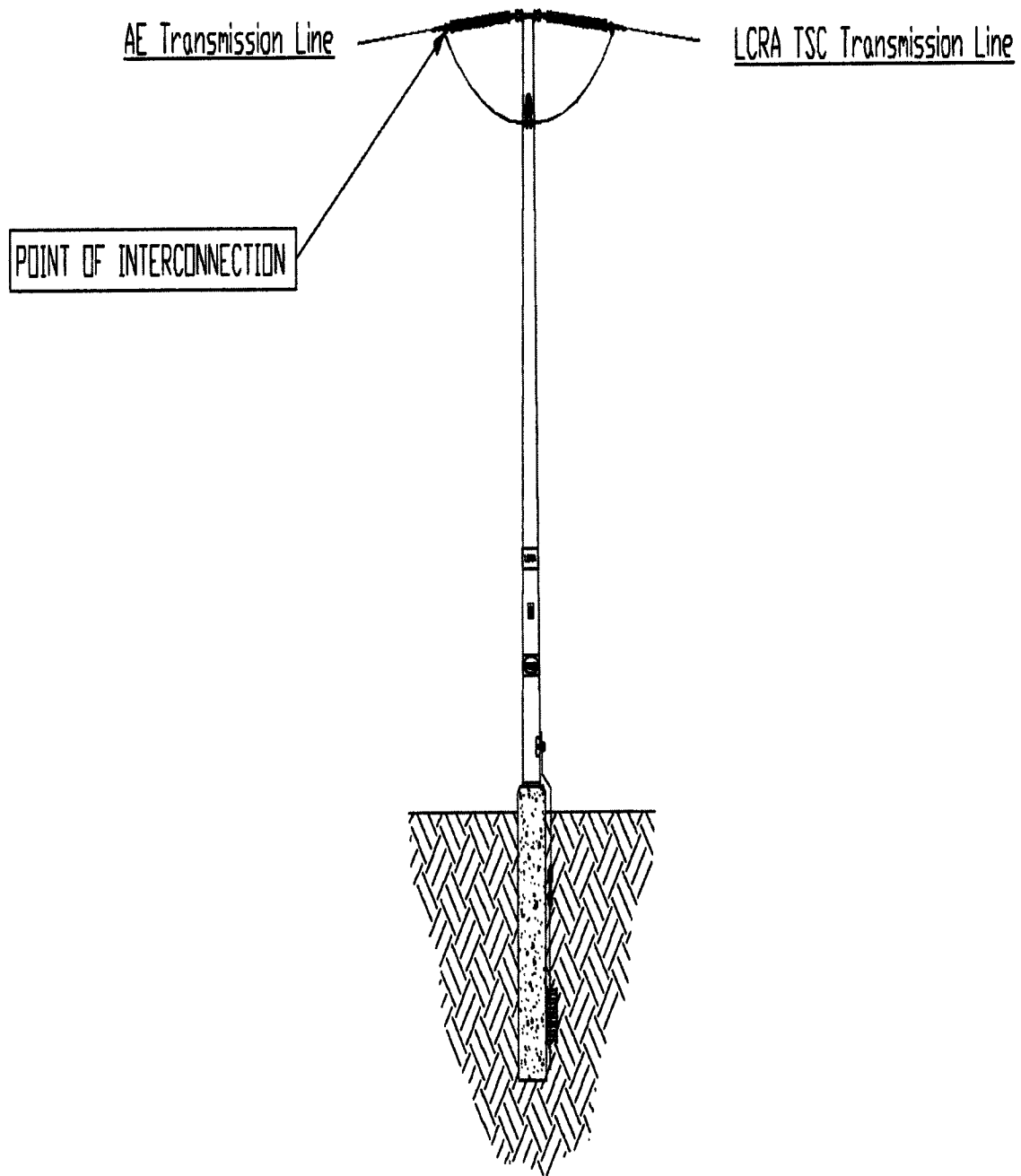
11. Supplemental terms and conditions

- Coordination and response to the ERCOT under-frequency, under-voltage or emergency load shedding program for Austin Energy load served out of this Substation is the responsibility of Austin Energy.
- Austin Energy and LCRA TSC will share access to the Substation by LCRA TSC and Austin Energy locks in the gates and in the control house doors.
- Austin Energy is responsible for reporting to ERCOT all required load data requests for Austin Energy load served out of this Substation.
- LCRA TSC will jointly work with Austin Energy to submit data for the ERCOT model configuration, naming, and numbering convention for this Substation.
- Each Party shall be responsible for submitting to ERCOT the required ICCP data for the equipment they own at this Substation.
- At the Lakeway Tap, the following tasks will be performed by the listed party reasonably promptly following the execution of this Amendment:
 - Austin Energy's existing transmission line will continue to dead-end at the Lakeway Tap box structure, and LCRA TSC will disconnect the tap between Austin Energy and LCRA TSC's transmission line T-180.
 - Existing tap switches will be removed from the Lakeway Tap box structure and LCRA TSC's transmission line T-180 will be reconnected through the box structure. This work will be performed by LCRA TSC.
 - Austin Energy will add the section of transmission line from the Lakeway Interconnection at LCRA TSC structure 15E to their existing structure near the road.
 - The Substation will be cut into the existing LCRA TSC 138 kV transmission line T-179 which runs from Marshall Ford Substation to Bee Creek Substation near the Lakeway Tap. This work will be performed by LCRA TSC.
- During the construction phase, LCRA TSC will direct and coordinate all switching of 138 kV equipment between LCRA TSC and Austin Energy, specifically including switches 4762, 4766 and 4768 at the Lakeway Tap (up to the point of interconnection with the Austin Energy circuit switchers LW-600M and LW-601M at the Substation).

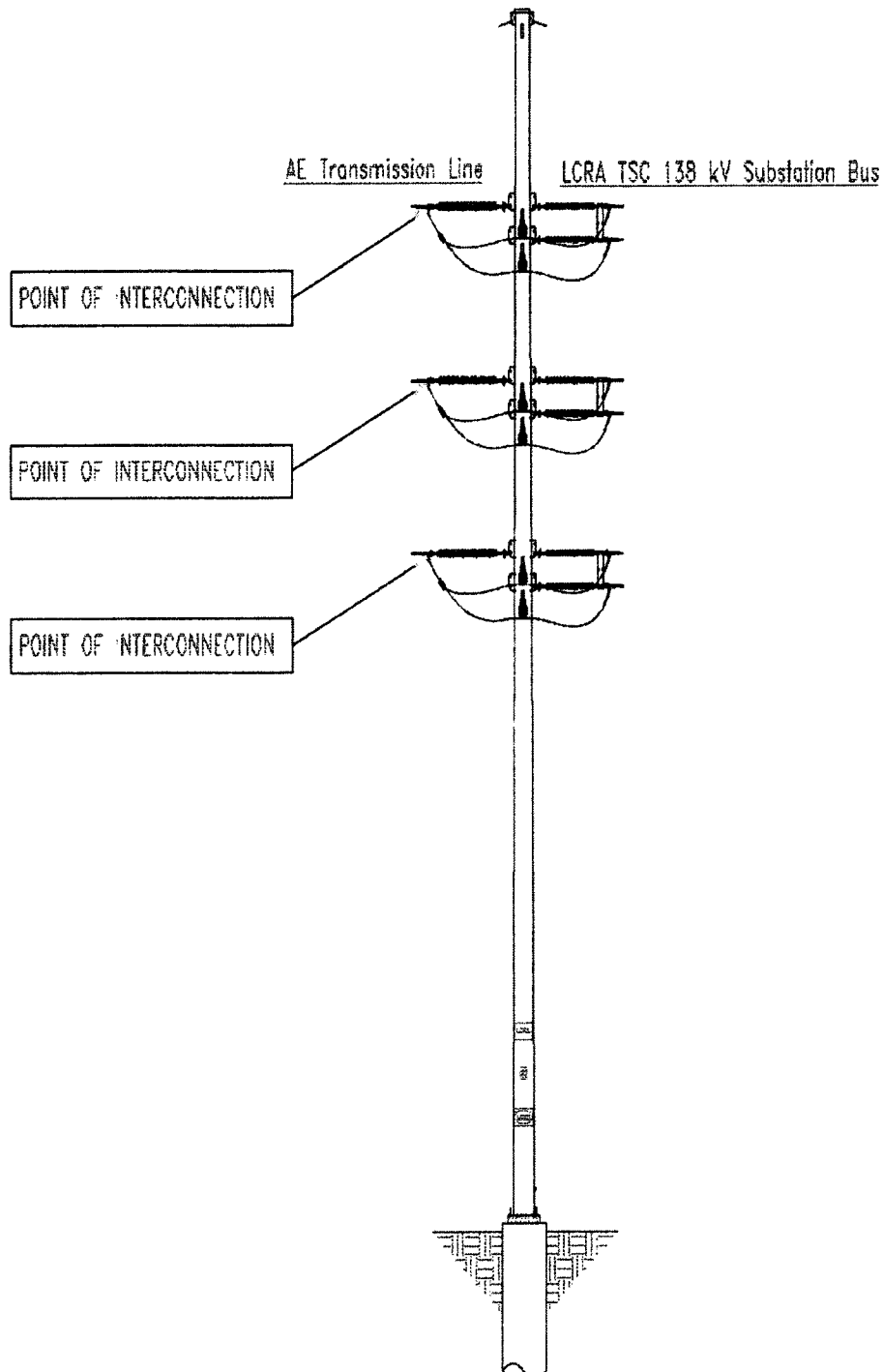
LCRA TSC STR 15C
(NEAR LAKEWAY TAP)
(Typical of 3)



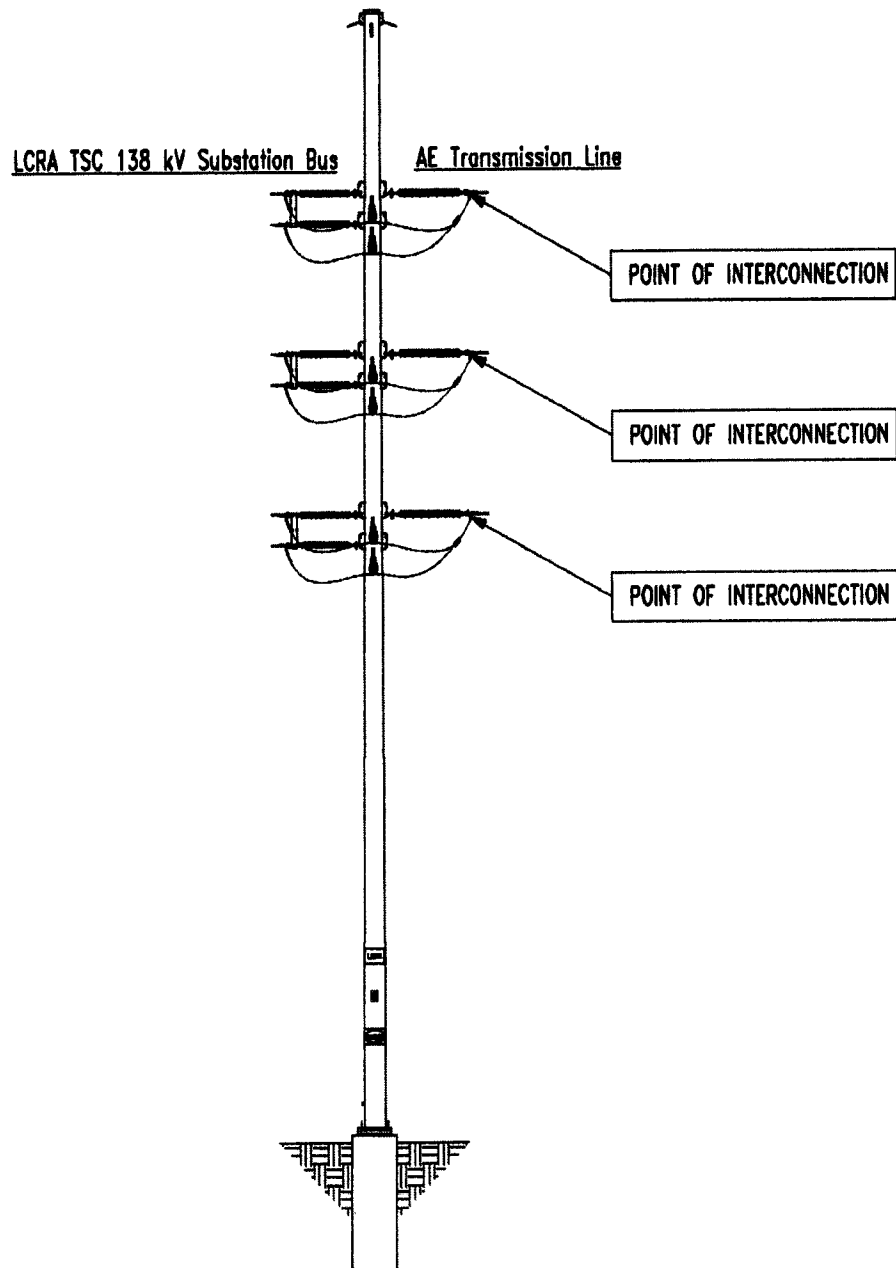
LCRA TSC STR 15E
(NEAR LAKEWAY TAP)
(Typical of 3)



LCRA TSC DEAD-END STR #25
(INSIDE THE SUBSTATION)



AE DEAD-END STRUCTURE
Designated "AE Structure #7"
(INSIDE THE SUBSTATION)



Substation One-Line Diagram

