



Control Number: 35077



Item Number: 258

Addendum StartPage: 0

**Project No. 35077**

**Second Amendment to**

**INTERCONNECTION AGREEMENT**

**Between**

**City of Seguin  
and**

**LCRA Transmission Services Corporation**

**Dated**

**September 14, 2011**

11 SEP 20 PM 2:35  
FILMS CLERK

259

**SECOND AMENDMENT TO  
INTERCONNECTION AGREEMENT**

This Second Amendment ("Amendment") is made and entered into this 14<sup>th</sup> day of September, 2011, between the City of Seguin ("City") and the LCRA Transmission Services Corporation ("LCRA TSC") collectively referred to hereinafter as the Parties.

**WHEREAS**, the LCRA TSC and the City entered into that certain Interconnection Agreement executed October 17, 2008, as amended by that certain Amendment No. 1, executed as of January 6, 2010, and;

**WHEREAS**, the LCRA TSC will install power transformer T-2 and associated circuit switcher and distribution bays at Cushman Substation, and;

**WHEREAS**, the City will install two (2) breakers at Cushman Substation

**NOW, THEREFORE**, in consideration of the mutual promises and undertakings herein set forth, the Parties agree to amend the Agreement as follows:

1. Exhibit "A" attached to the Agreement is deleted in its entirety and the Exhibit "A" attached to this Second Amendment is hereby added to the Agreement in lieu thereof.
2. Facility Schedule No. 1 (including the diagrams attached thereto) is deleted in its entirety and Facility Schedule No. 1 attached to this Second Amendment is hereby added to the Agreement in lieu thereof.
3. Facility Schedule No. 1 (including the diagrams attached thereto) attached to this Second Amendment will become effective upon execution of this Second Amendment by the Parties.

Except as otherwise expressly provided for herein, the Agreement will continue in full force and effect in accordance with its terms.

IN WITNESS WHEREOF, the Parties have caused this Second Amendment to be executed in several counterparts, each of which shall be deemed an original but all shall constitute one and the same instrument.

CITY OF SEGUIN

By: Douglas R. Faseler

Name: Douglas Faseler

Title: City Manager

Date: 9/14/11

LCRA TSC - The City of Seguin

LCRA TRANSMISSION SERVICES  
CORPORATION

By: Ray Pfefferkorn

Name: Ray Pfefferkorn, P.E.

Title: LCRA Transmission Engineering  
Manager

Date: 9/7/11



**EXHIBIT A**  
**Second Amendment**

[illegible]

**FACILITY SCHEDULE NO. 1**  
**Second Amendment**

1. **Name:** Cushman Substation
2. **Facility Location:** The Cushman Substation is located at 1313 E. College St., Seguin, Guadalupe County, Texas.
3. **Points of Interconnection:** There are fifteen (15) Points of Interconnection in the Cushman Substation generally described as:
  - where the incoming distribution line connects to the tubular bus between switches CS-21 and CS-23 at breaker CS-20.
  - where the jumper from breaker CS-20 connects to the 4 hole pad on switch CS-19.
  - where the jumper from breaker CS-20 connects to the 4 hole pad on switch CS-21.
  - where the incoming distribution line connects to the tubular bus between switches CS-31 and CS-33 at breaker CS-30.
  - where the jumper from breaker CS-30 connects to the 4 hole pad on switch CS-29.
  - where the jumper from breaker CS-30 connects to the 4 hole pad on switch CS-31.
  - where the incoming distribution line connects to the tubular bus between switches CS-41 and CS-43 at breaker CS-40.
  - where the jumper from breaker CS-40 connects to the 4 hole pad on switch CS-39.
  - where the jumper from breaker CS-40 connects to the 4 hole pad on switch CS-41.
  - where the incoming distribution line connects to the tubular bus between switches CS-71 and CS-73 at breaker CS-70.
  - where the jumper from breaker CS-70 connects to the 4 hole pad on switch CS-69.
  - where the jumper from breaker CS-70 connects to the 4 hole pad on switch CS-71.
  - where the incoming distribution line connects to the tubular bus between switches CS-81 and CS-83 at breaker CS-80.
  - where the jumper from breaker CS-80 connects to the 4 hole pad on switch CS-79.
  - where the jumper from breaker CS-80 connects to the 4 hole pad on switch CS-81.
4. **Transformation Services Provided by LCRA TSC:** Yes
5. **Metering Services Provided by LCRA TSC:** Yes

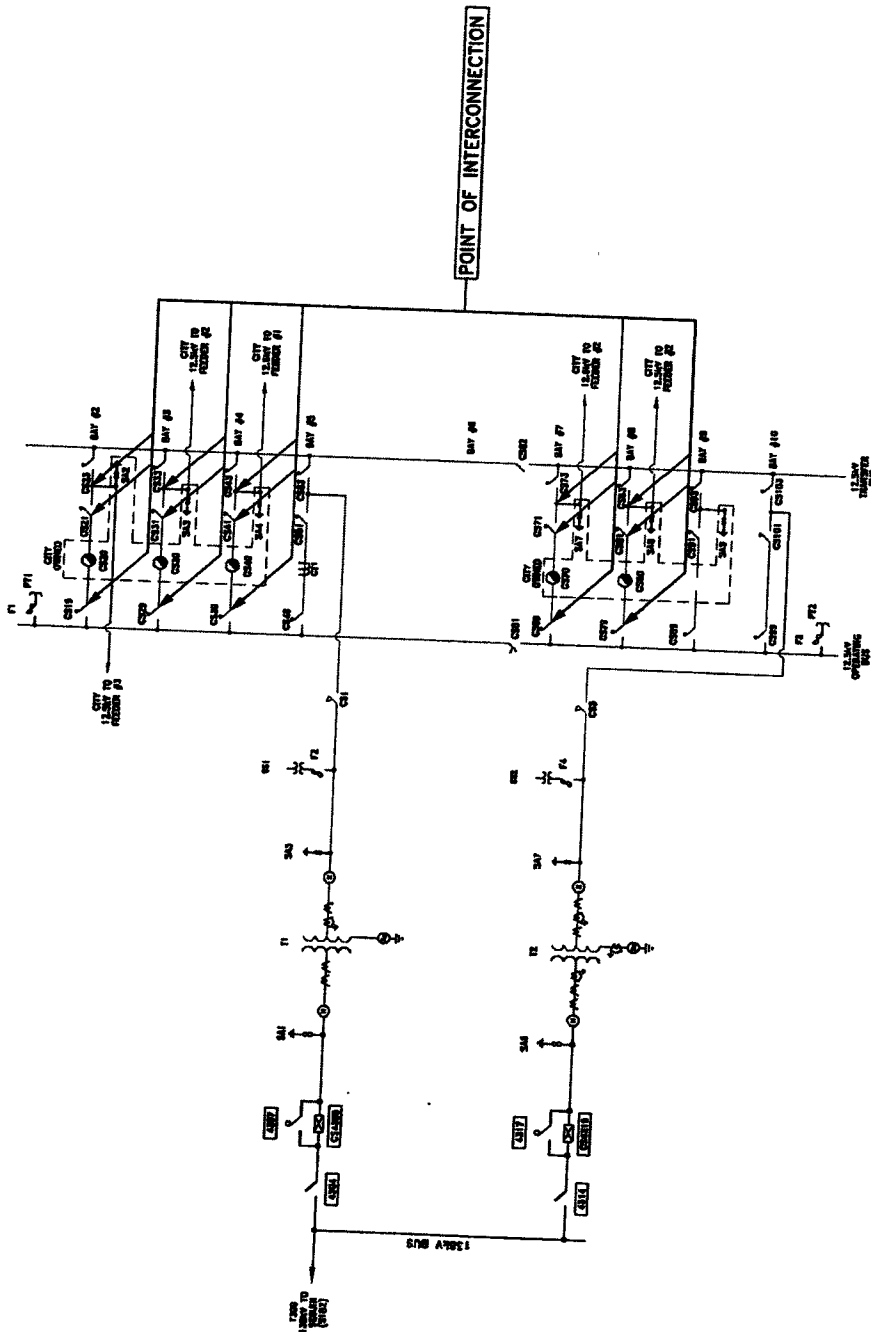
6. **Delivery Voltage:** 12.5 kV
7. **Metered Voltage and Location:** The metered voltage is 12.5 kV. The metering current transformers are located in total bay #5 and inside T-2. The metering potential transformers are located on the operating bus.
8. **One Line Diagram Attached:** Yes
9. **Description of Facilities Owned by Each Party:**
  - City owns:
    - Five (5) distribution circuit breakers CS-20, CS-30, CS-40, CS-70, and CS-80 with foundations, jumpers and protective relaying
    - Five (5) distribution circuits with surge arresters
  - LCRA TSC owns:
    - The site (property), including site work, fence, foundations, and ground grid
    - 138 kV Operating Bus including structures, insulators, hardware, foundations and jumpers
    - Two (2) 138 kV circuit switchers CS-4305 and CS-4315 with disconnect and bypass switches 4304, 4314 and 4307, 4317
    - Two (2) power transformers T-1 and T-2 with associated surge arresters
    - Ten (10) distribution and total bays including A-frames, trusses, insulators, disconnect switches, bus tie switches, 12.5 kV operating and transfer bus, bus potential transformers, and metering current transformers
    - Underfrequency relay panel
    - Two (2) station service SS-1 and SS2
    - Control house with batteries
10. **Operational Responsibilities of Each Party:**
  - The City will be responsible for the operation of the five (5) distribution circuit breakers serving the City feeders.
  - LCRA TSC will be responsible for the operation from the metering current transformers through the power transformers, circuit switchers and 138 kV switches.
11. **Maintenance Responsibilities of Each Party:** Each Party will be fully responsible for the maintenance of the equipment it owns.
12. **Other Terms and Conditions:**
  - The City and LCRA TSC are to share access to the substation by LCRA TSC locks in the gate and in the control house doors.
  - The City is permitted to install, operate and maintain, a Strix model 82-2195 antenna and associated electronics at approximately 45 foot elevation onto a pole

to be installed by the City, operating at a transmit frequency of 5.725 Mhz and a receive frequency of 5.85 Mhz under the following conditions:

- The City installation is reviewed and approved by LCRA TSC prior to installation.
- The City installation does not interfere with LCRA TSC operations.
- The City installation is for the sole purpose of electric utility operations associated with the substation and the City's distribution equipment.
- The City will install, or have installed, at its sole expense a pole on the north side of the control house between the control house and College Street away from the bus work and transformer to which it will mount its WIFI antenna and associated electronics.

# CUSHMAN ONE-LINE DIAGRAM

## Second Amendment



CUSHMAN SUBSTATION  
THIS IS NOT A COMPLETE ONE-LINE DIAGRAM

FOR A COMPLETE ONE-LINE DIAGRAM OF THIS  
SUBSTATION, REFER TO DWG.  
S258-E-0001-01.