



Control Number: 35077



Item Number: 257

Addendum StartPage: 0

Project No. 35077

Second Amendment to

INTERCONNECTION AGREEMENT

Between

**Central Texas Electric Cooperative
and**

LCRA Transmission Services Corporation

Dated

September 14, 2011

11 SEP 20 PM 2:35
PLANS DEPT
11 SEP 20

257

SECOND AMENDMENT TO INTERCONNECTION AGREEMENT

This Second Amendment ("Amendment") is made and entered into this 14th day of SEPTEMBER 2011, between the Central Texas Electric Cooperative ("CTEC") and LCRA Transmission Services Corporation ("LCRA TSC") collectively referred to hereinafter as the Parties.

WHEREAS, the LCRA TSC and the CTEC entered into that certain Interconnection Agreement executed August 13, 2009, as amended by that certain Amendment No. 1 executed as of June 22, 2011 (collectively, as amended, the "Agreement") and;

WHEREAS, Castell Substation is being converted from 69 kV to 138 kV, and;

WHEREAS, CTEC installed a circuit switcher, power transformer and distribution at the Gillespie Substation, and;

WHEREAS, LCRA TSC will install the Hollmig Substation

NOW, THEREFORE, in consideration of the mutual promises and undertakings herein set forth, the Parties agree to amend the Agreement as follows:

1. Exhibit "A" attached to the Agreement is deleted in its entirety and Exhibit "A" attached to this Second Amendment is hereby added to the Agreement in lieu thereof.
2. Facility Schedule No. 2 (including the diagrams attached thereto) is deleted in its entirety and Facility Schedule No. 2 attached to this Second Amendment is hereby added to the Agreement in lieu thereof.
3. Facility Schedule No. 2 (including the diagrams attached thereto) attached to this Second Amendment will become effective upon execution of this Second Amendment by the Parties.
4. Facility Schedule No. 14 (including the diagrams attached thereto) is hereby added to this Second Amendment.
5. Facility Schedule No. 14 (including the diagrams attached thereto) attached to this Second Amendment will become effective upon execution of this Second Amendment by the Parties.
6. Facility Schedule No. 15 (including the diagrams attached thereto) is hereby added to this Second Amendment.

7. Facility Schedule No. 15 (including the diagrams attached thereto) attached to this Second Amendment will become effective upon execution of this Second Amendment by the Parties.

Except as otherwise expressly provided for herein, the Agreement will continue in full force and effect in accordance with its terms.

IN WITNESS WHEREOF, the Parties have caused this Second Amendment to be executed in several counterparts, each of which shall be deemed an original but all shall constitute one and the same instrument.

CENTRAL TEXAS ELECTRIC
COOPERATIVE

By: Robert A. Loth III

Name: Robert A. Loth III

Title: Chief Executive Officer

Date: 9/14/11

LCRA TRANSMISSION SERVICES
CORPORATION

By: Ray Pfefferkorn

Name: Ray Pfefferkorn, P.E.

Title: LCRA Transmission Engineering
Manager

Date: 9/7/11



EXHIBIT A
Second Amendment

FACILITY SCHEDULE NO.	LOCATION OF POINT(S) OF INTERCONNECTION (# of Points)	INTERCONNECTION VOLTAGE (KV)	EFFECTIVE DATE OF INTERCONNECTION
1	Buchanan CTEC (6)	69 kV	August 13, 2009
2	Castell (1)	138 kV	Date of 2 nd Amendment
3	Eckert (2)	4.16 kV	August 13, 2009
4	Fredericksburg (1)	69 kV	August 13, 2009
5	Kendall CTEC (1)	138 kV	August 13, 2009
6	Live Oak CTEC (1)	69 kV	August 13, 2009
7	Nimitz (9)	12.5 kV	August 13, 2009
8	Pittsburg (1)	138 kV	June 22, 2011
9	Rim Rock (6)	12.5 kV	August 13, 2009
10	Wolf Creek (1)	138 kV	August 13, 2009
11	Jack Furman (1)	138 kV	June 22, 2011
12	Sunrise Beach (1)	69 kV	August 13, 2009
13	CTEC Mason (1)	138 kV	June 22, 2011
14	Gillespie (1)	138 kV	Date of 2 nd Amendment
15	Hollmig (1)	138 kV	Date of 2 nd Amendment
16			
17			
18			
19			
20			
21			
22			
23			
24			
25			
26			
27			
28			
29			
30			
31			
32			
33			
34			
35			

FACILITY SCHEDULE NO. 2
Second Amendment

1. **Name:** Castell Substation
2. **Facility Location:** The Castell Substation is located at 18411 W. State Hwy. 29, Castell, Llano County, Texas 78631.
3. **Points of Interconnection:** There is one (1) Point of Interconnection in the Castell Substation generally described as:
 - where the 138 kV operating bus expansion connector bolts to the four hole pad on 138 kV switch 22864.
4. **Transformation Services Provided by LCRA TSC:** No
5. **Metering Services Provided by LCRA TSC:** Yes
6. **Delivery Voltage:** 138 kV
7. **Metered Voltage and Location:** The metering voltage is 12.5 kV. The metering current transformer is located in the 12.5 kV T-1 transformer bus. The bus potential transformer is located on the 12.5 kV operating bus.
8. **One Line Diagram Attached:** Yes
9. **Description of Facilities Owned by Each Party:**

CTEC owns:

The Castell Substation including, but not limited to, the following items:

 - 138 kV transformer bus including structures, insulators, foundations and jumpers
 - One (1) circuit switcher CS-22865 with bypass switch 22867
 - One (1) 138 kV mobile disconnect switch 22868
 - One (1) 138 kV operating bus disconnect switch 22864
 - One (1) power transformer T-1 with associated surge arresters
 - Three (3) single phase voltage regulators REG-1 with associated bypass and disconnect switches
 - All distribution circuit breakers including jumpers and protective relay packages
 - All distribution circuits including dead end insulators that attach to the dead end structure, conductors, and hardware
 - All distribution and total bays including foundations, structures, insulators, disconnect switches, surge arresters, 12.5 kV operating and transfer bus, and

associated cabling

- One (1) station service SS-1 and fuse F-3

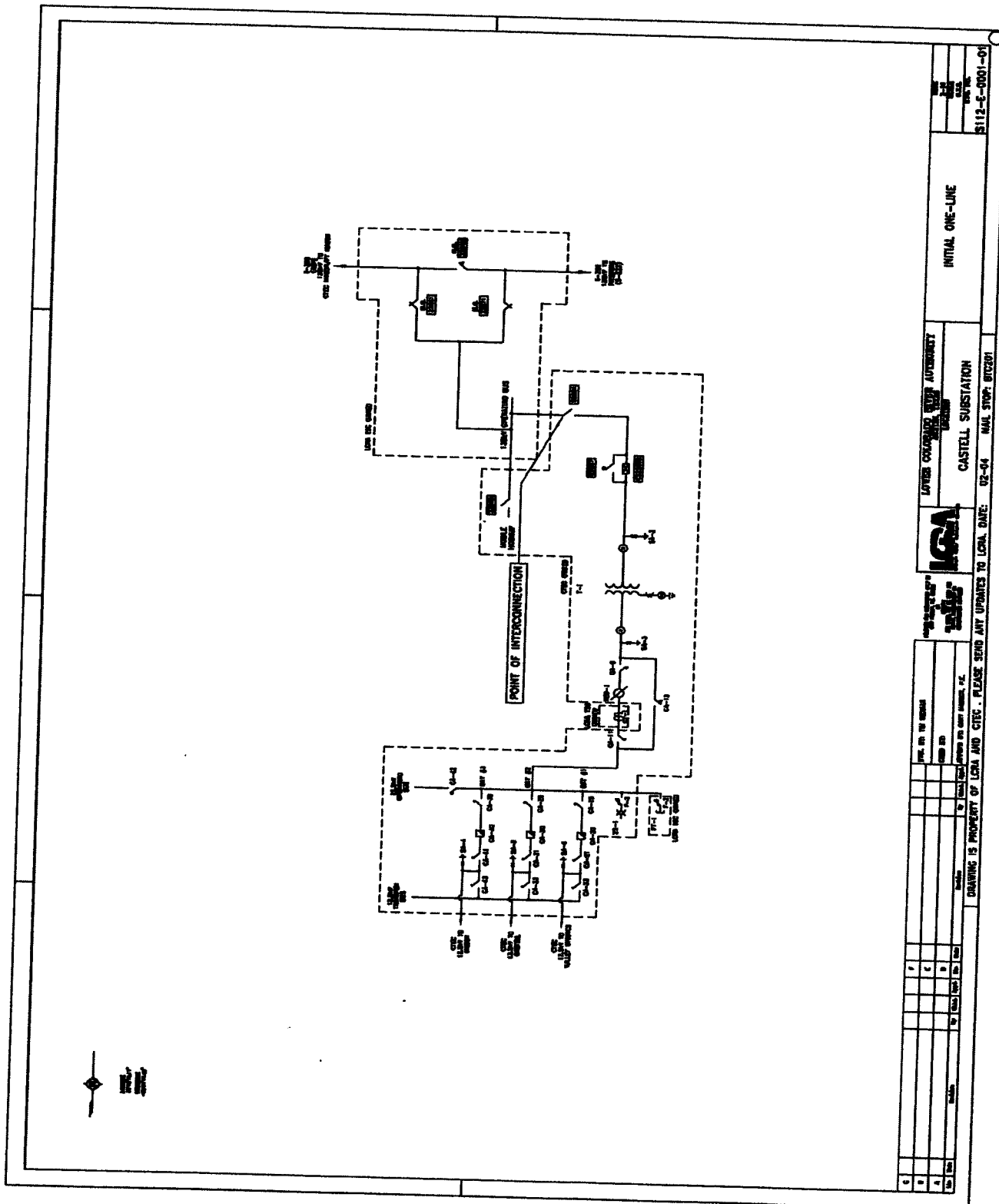
LCRA TSC owns:

- The following transmission lines comprised of conductors, insulators, and connecting hardware:
 - Castell to Pittsburg 138 kV transmission line
 - Castell to CTEC Mason / Fort Mason 138 kV transmission line
- 138 kV dead-end structure, foundations, insulators and jumpers
- 138 kV operating bus including structures, insulators, foundations and jumpers
- Three (3) 138 kV motor operated switches with interrupters MO-22861, MO-22862 and MO-22871
- One (1) 12.5 kV bus potential transformer PT-1 and fuse F-2
- One (1) metering current transformer CT-1
- Portable meter house
- Control house (21' x 27')

- 10. Operational Responsibilities of Each Party:** Each Party is responsible for the operation of the equipment it owns.
- 11. Maintenance Responsibilities of Each Party:** Each Party will be fully responsible for the maintenance of the equipment it owns.
- 12. Other Terms and Conditions:** CTEC and LCRA TSC are to share access to the substation by LCRA TSC locks in the gate and in the control house doors.

CASTELL ONE-LINE DIAGRAM

Second Amendment



FACILITY SCHEDULE NO. 14
Second Amendment

1. **Name:** Gillespie Substation
2. **Location:** The Gillespie Substation is located 1.7 miles north of Fredricksburg, Texas at 2826 N. US Hwy 87, Fredericksburg, Gillespie County, Texas 78624.
3. **Points of Interconnection:** There is one (1) Point of Interconnection in the Gillespie Substation generally described as:

Where the jumper from the LCRA TSC 138 kV Operating Bus #2 connects to the four hole pad on switch 22654
4. **Transformation Services Provided by LCRA TSC:** No
5. **Metering Services Provided by LCRA TSC:** Yes
6. **Delivery Voltage:** 138 kV
7. **Metered Voltage and Location:** The metering voltage is 12.5 kV. The metering current transformer is owned by LCRA TSC and located in the totalizing bay. The potential transformers are owned by CTEC and located on the 12.5 kV operating bus.
8. **One-Line Diagram Attached:** Yes
9. **Description of Facilities Owned by Each Party:**

CTEC owns:

- One (1) circuit switcher CS-22655 with associated disconnect and bypass switches 22654 and 22657
- One (1) power transformer T-2
- All distribution circuits including dead end insulators that attach to the dead end structure, conductors, and hardware
- All T-2 distribution circuit breakers including jumpers, protective relay packages and foundations
- All T-2 distribution and total bays including A-frames, trusses, insulators, disconnect switches, surge arresters, bus potential transformer, 12.5 kV operating and transfer bus, and associated cabling
- One (1) regulator REG-1 with associated disconnect and bypass switches
- One (1) station service SS-2 with associated fuse F-1

LCRA TSC owns:

The Gillespie Substation including, but not limited to, the following items:

- All facilities within the Gillespie Substation except those listed as being owned by CTEC
- 138 kV Operating Bus #2 including structures, insulators, foundations and jumpers
- The jumper from the 138 kV Operating Bus #2 to the Point of Interconnection at the four hole pad on switch 22654
- One (1) metering current transformer CT-1 in the CTEC T-2 totalizing bay

10. **Operational Responsibilities of Each Party:** Each Party is responsible for the operation of the equipment it owns.
11. **Maintenance Responsibilities of Each Party:** Each Party will be fully responsible for the maintenance of the equipment it owns.
12. **Other Terms and Conditions:** CTEC and LCRA TSC are to share access to the substation by LCRA TSC locks in the gate and in the control house doors.

Second Amendment



THIS IS A PARTIAL ONE LINE DRAWING. FOR A COMPLETE ONE LINE SEE DRAWING S218-E-1-1

FACILITY SCHEDULE NO. 15
Second Amendment

1. **Name:** Hollmig Substation
2. **Location:** The Hollmig Substation is located on Hollmig Lane in Gillespie County, Texas.
3. **Points of Interconnection:** There is one (1) Point of Interconnection in the Hollmig Substation generally described as:

Where the jumper from the LCRA TSC 138 kV Operating Bus connects to the four hole pad on switch 23754
4. **Transformation Services Provided by LCRA TSC:** No
5. **Metering Services Provided by LCRA TSC:** Yes
6. **Delivery Voltage:** 138 kV
7. **Metered Voltage and Location:** The metering voltage is 24.9 kV. The metering current transformer is owned by LCRA TSC and located in the totalizing bay. The potential transformers are owned by CTEC and located on the 24.9 kV operating bus.
8. **One-Line Diagram Attached:** Yes
9. **Description of Facilities Owned by Each Party:**

CTEC owns:

- One (1) circuit switcher CS-23755 with associated disconnect and bypass switches 23754 and 23757
- One (1) power transformer T-1 with associated surge arresters
- All distribution circuits including dead end insulators that attach to the dead end structure, conductors, and hardware
- All distribution circuit breakers including jumpers, protective relay packages and foundations
- All distribution and total bays including A-frames, trusses, insulators, disconnect switches, surge arresters, 24.9 kV operating and transfer bus, bus potential transformer, MTU, and associated cabling
- One (1) three phase voltage regulator REG-1
- One (1) station service with fuse

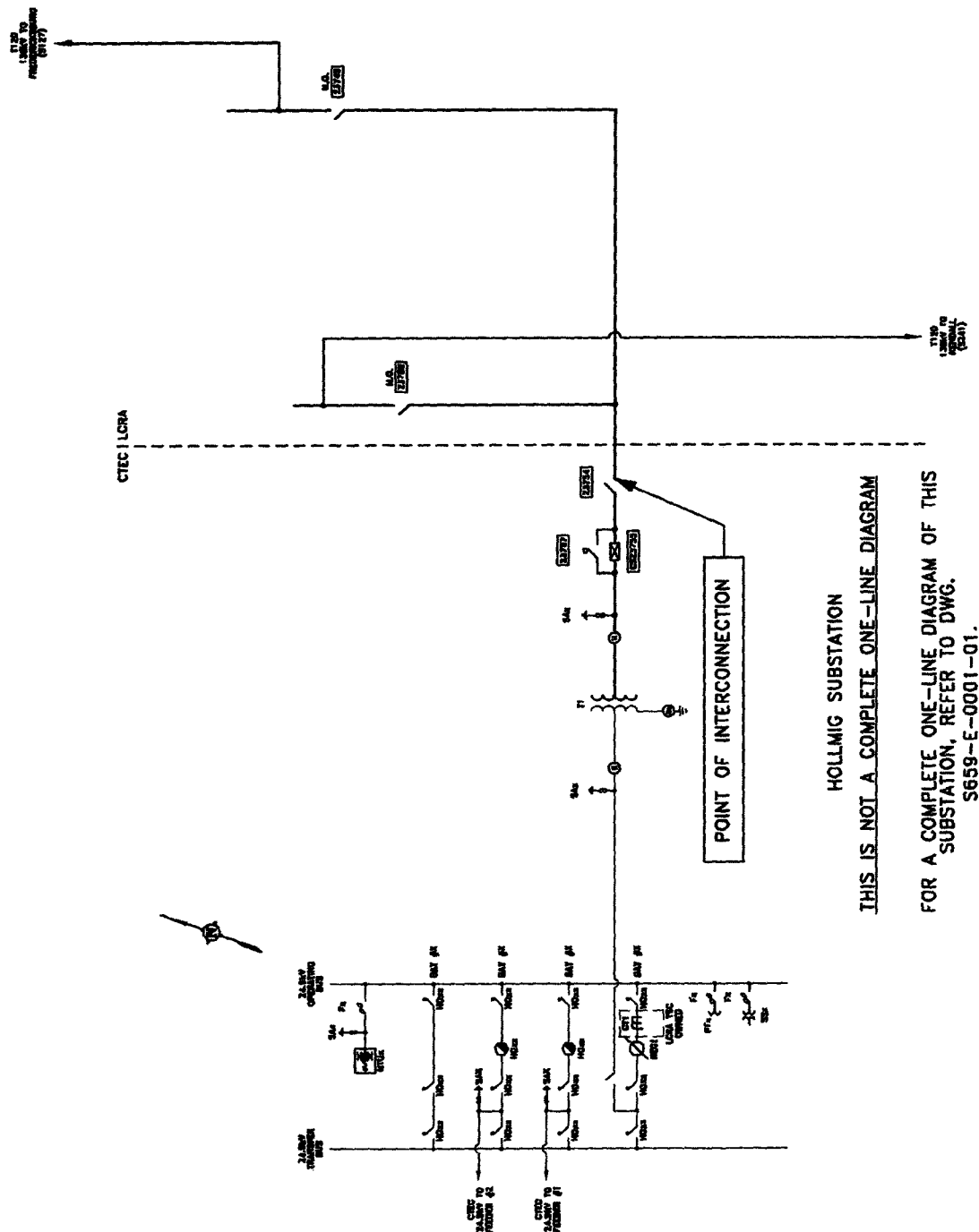
LCRA TSC owns:

The Hollmig Substation including, but not limited to, the following items:

- Two (2) 138 kV dead end structures, foundations and insulators
- Two (2) 138 kV motor operated sectionalizing switches MO-23749 and MO-23759
- 138 kV operating bus including structures, insulators, foundations and jumpers
- One (1) control house (24' x 42')
- One (1) metering current transformer CT-1
- Batteries and battery charger

10. **Operational Responsibilities of Each Party:** Each Party is responsible for the operation of the equipment it owns.
11. **Maintenance Responsibilities of Each Party:** Each Party will be fully responsible for the maintenance of the equipment it owns.
12. **Other Terms and Conditions:** CTEC and LCRA TSC are to share access to the substation by LCRA TSC locks in the gate and in the control house doors.

Second Amendment

**HOLLMIG SUBSTATION**

THIS IS NOT A COMPLETE ONE-LINE DIAGRAM

FOR A COMPLETE ONE-LINE DIAGRAM OF THIS
SUBSTATION, REFER TO DWG.
S659-E-0001-01.