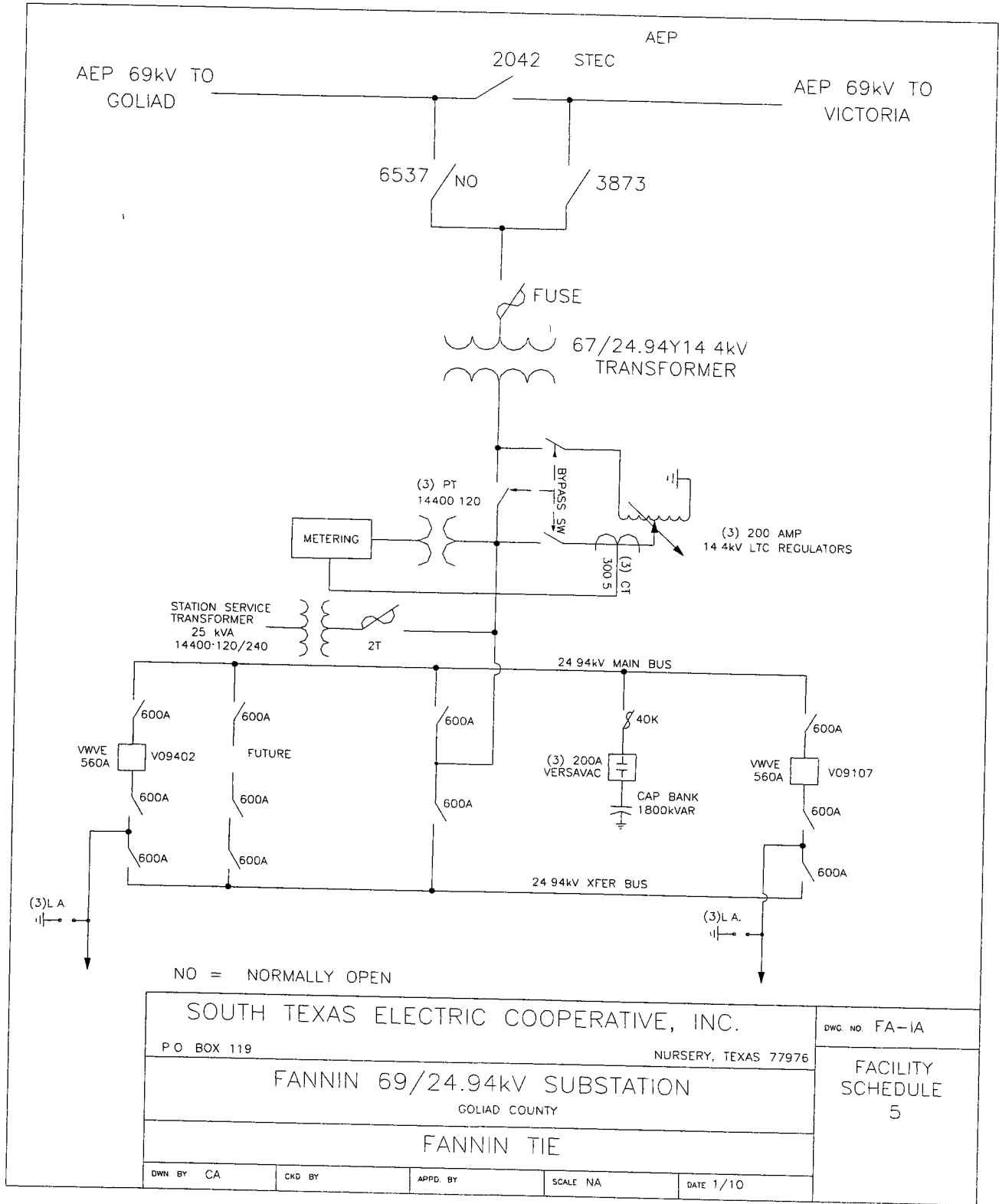
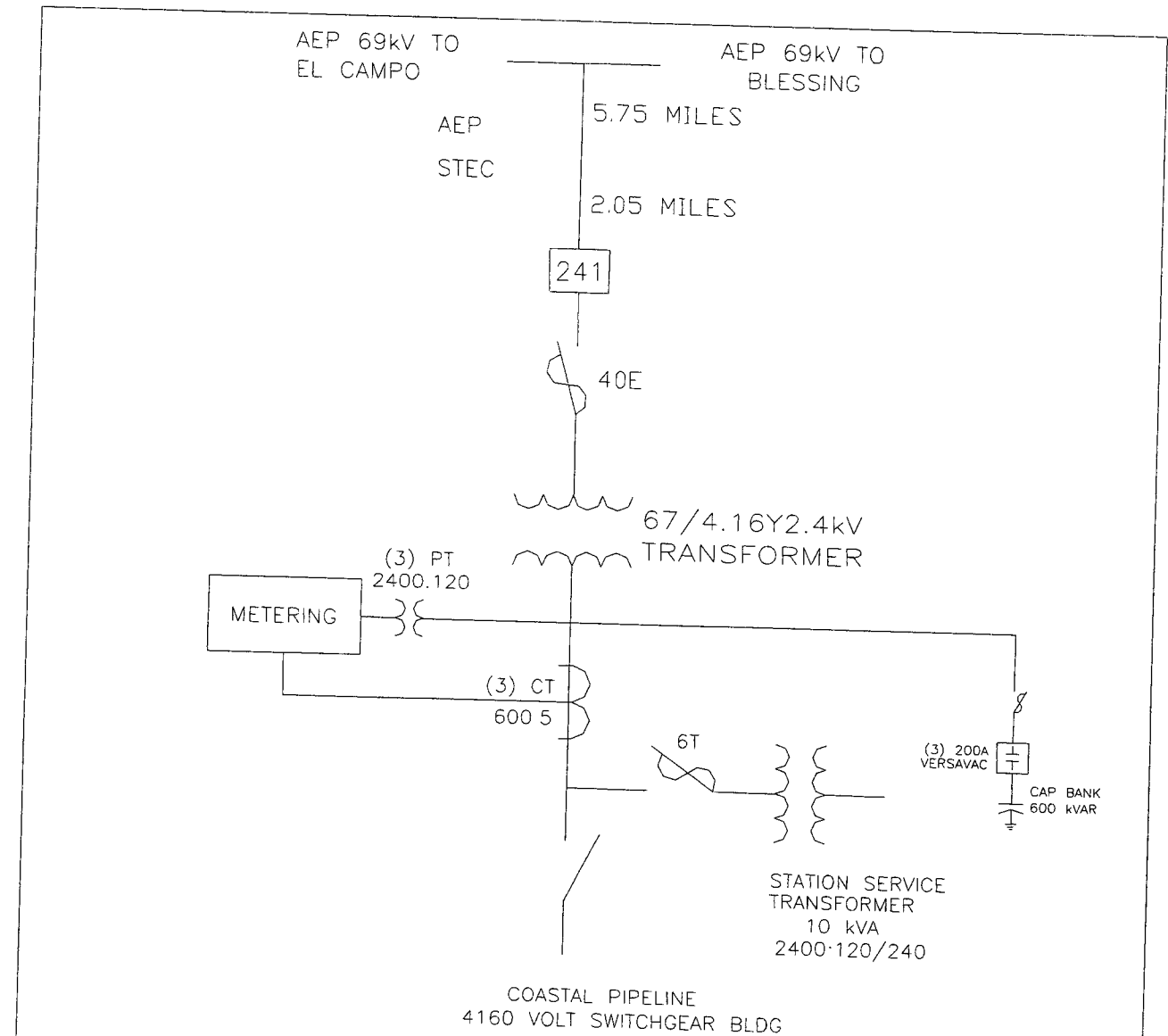


1. Name: **Fannin**
2. Facility Location: Cooperative's Fannin Substation at 399 FM 2506, Fannin, Goliad County
3. Delivery Voltage: 69 kV
4. Metered Voltage: 24.94kV
5. Loss Adjustment Due To Meter Location: Yes.
6. Normal Operation of Interconnection: Closed
7. One-Line Diagram Attached: Yes
8. Description of Facilities Installed and Owned by Each Party:
Cooperative owns all equipment in this station.
Company owns the transmission lines from Goliad and Victoria that terminate at this substation.
9. Operational Responsibilities of Each Party:
Cooperative and Company both have the ability to operate the 69kV air switches #2042, #6537, and #3873 according to Company dispatch instructions. Cooperative operates the remaining equipment in this substation.
10. Maintenance Responsibilities of Each Party:
Cooperative maintains all equipment in this substation.
Company maintains the transmission lines that terminate at this substation.
11. Other Terms and Conditions:
Company has access to the station with a lock in the security fence gate.



FACILITY SCHEDULE NO. 6

1. Name: **Midfield West Tie Line**
2. Facility Location: Cooperative's Midfield West Substation at 112 County Road 434, Wharton County
3. Delivery Voltage: 69 kV
4. Metered Voltage: 4.16kV
5. Loss Adjustment Due To Meter Location: Yes.
6. Normal Operation of Interconnection: Closed
7. One-Line Diagram Attached: Yes
8. Description of Facilities Installed and Owned by Each Party:
Cooperative installed and owns all facilities in the Midfield West Substation.
Cooperative installed and owns 2.05 miles of 69kV transmission line from the Midfield West Substation to a point where ownership changes to Company.
Company owns the El Campo to Blessing 69kV transmission line and 5.75 miles of the 69kV tap line to the ownership change point.
9. Operational Responsibilities of Each Party:
The Parties operate the equipment they own.
10. Maintenance Responsibilities of Each Party:
The Parties maintain the equipment they own.
11. Other Terms and Conditions : None.



SOUTH TEXAS ELECTRIC COOPERATIVE, INC.		DWG NO. MF-IA
P.O. BOX 119	NURSERY, TEXAS 77976	FACILITY SCHEDULE 6
MIDFIELD WEST 69/4.16kV SUBSTATION WHARTON COUNTY		
MIDFIELD WEST TIE		
DWN BY CA	CKD BY	APPD BY
SCALE NA		DATE Apr 9, 2007

FACILITY SCHEDULE NO. 7

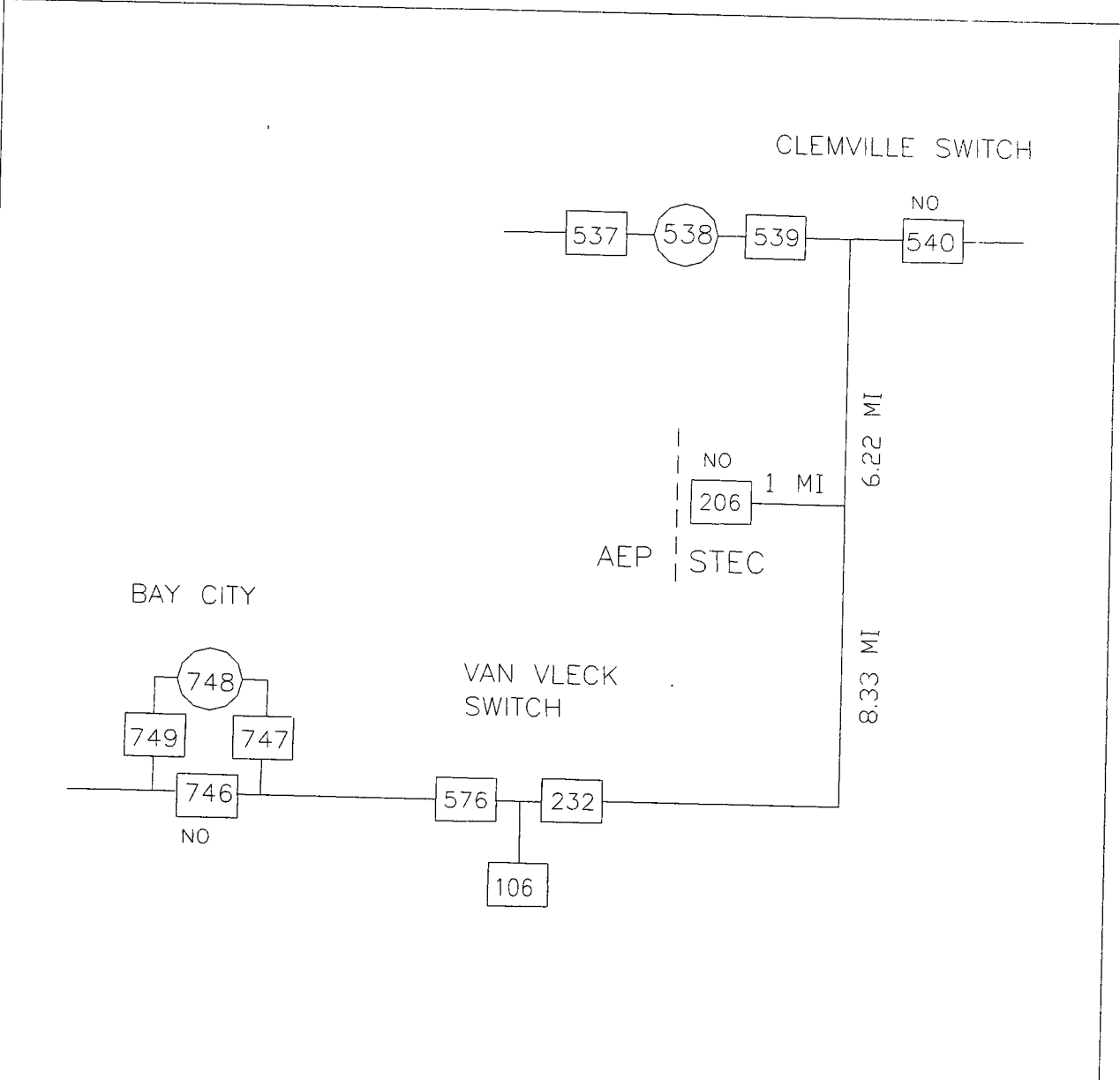
1. Name: **Markham Tie Line**
2. Facility Location: Approx. 1.5 miles on County Road 408 from Hwy 35
Markham, Matagorda County
3. Delivery Voltage: 69 kV
4. Metered Voltage: None
5. Loss Adjustment Due To Meter Location: None
6. Normal Operation of Interconnection: Open
7. One-Line Diagram Attached: Yes
8. Description of Facilities Installed and Owned by Each Party:

Cooperative installed and owns the air switch and approximately one (1) mile of 69kV transmission line connecting the air switch to the Cooperative's Clemville Switch to Van Vleck Switch 69kV line.

Company owns the 69kV transmission line between the Company's Markham to Bay City Pump #1 69kV line and the equipment connecting their line to the air switch #206.
9. Operational Responsibilities of Each Party:

Air switch #206 is dispatched by Cooperative and operated by Company or Cooperative through appropriate switching order.
10. Maintenance Responsibilities of Each Party:

Cooperative maintains the one mile of 69 kV line and switch 206.
11. Other Terms and Conditions : None

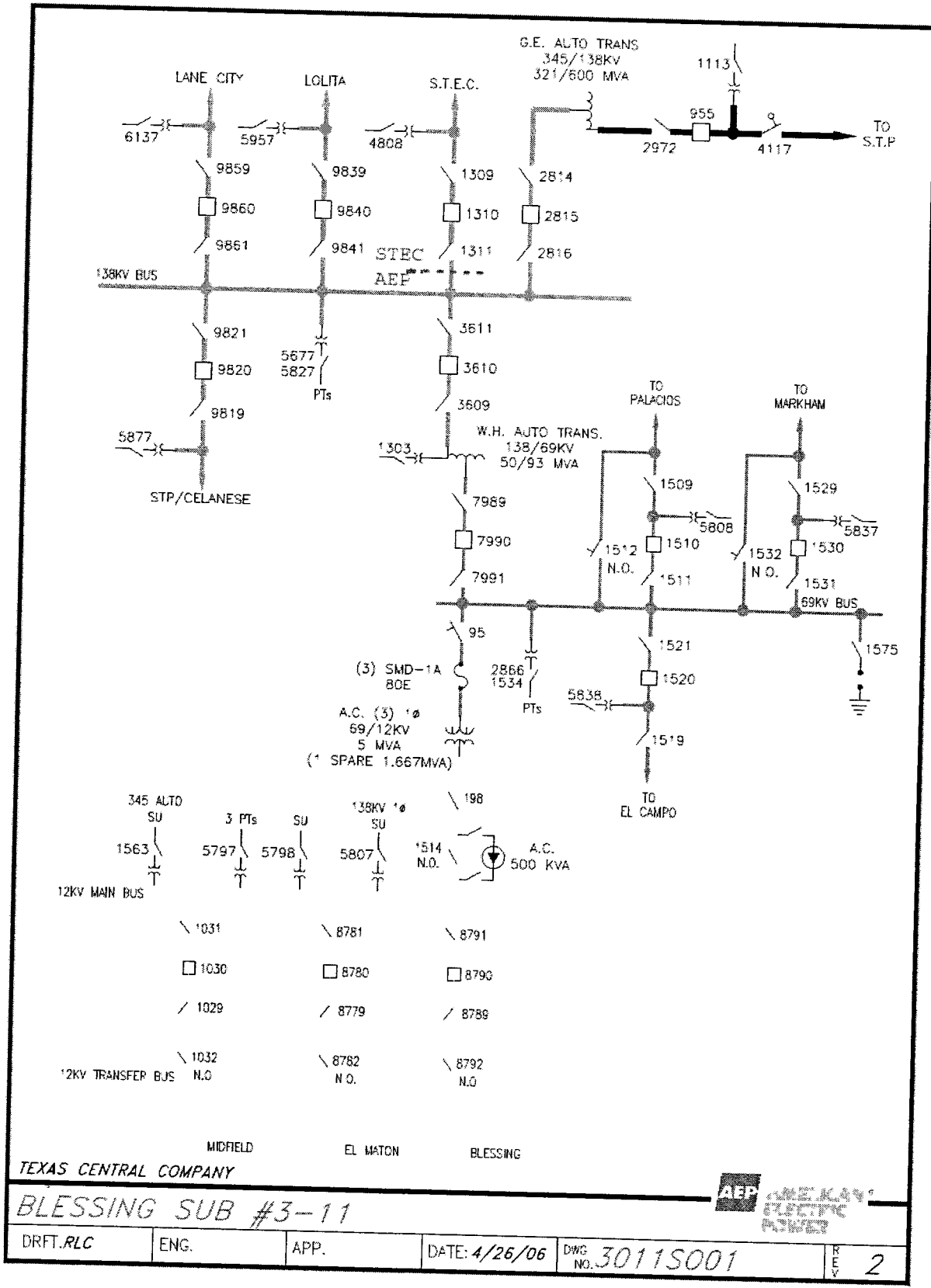


NO = NORMALLY OPEN
ALL EQUIPMENT 69kV

SOUTH TEXAS ELECTRIC COOPERATIVE, INC.				DWG NO MA-1A
P O BOX 119		NURSERY, TEXAS 77976		
NORMALLY OPEN 69kV SWITCH 206				FACILITY SCHEDULE 7
MATAGORDA COUNTY				
MARKHAM TIE				
DWN BY CA	CKD BY	APPD BY	SCALE NA	DATE 3/98

FACILITY SCHEDULE NO. 8

1. Name: **Blessing**
2. Facility Location: Company's Blessing 345/138/69 kV Station near Blessing, Matagorda County
3. Delivery Voltage: 138 kV
4. Metered Voltage: 138 kV
5. Loss Adjustment Due To Meter Location: None
6. Normal Operation of Interconnection: Closed
7. One-Line Diagram Attached: Yes
8. Description of Facilities Installed and Owned by Each Party:
Cooperative furnished and owns the circuit breaker and associated equipment (including devices 1309, 1310, 1311) required at this substation for this interconnection point including the transmission line between Danevang and Blessing. The necessary interchange metering required for the point of interchange is located at the STEC Danevang 138kV Station and was installed and is owned and operated by Cooperative. Company installed and owns all other equipment in its Blessing station
9. Operational Responsibilities of Each Party:
Company operates all equipment in its Blessing Substation.
10. Maintenance Responsibilities of Each Party:
Maintenance is the responsibility of the equipment owner. If mutually agreeable, Company may perform and bill Cooperative for maintenance of Cooperative owned equipment at Company's Blessing Substation.
11. Other Terms and Conditions :
None.



FACILITY SCHEDULE NO. 9

- 1 Name: **Victoria**
- 2 Facility Location: Company's Victoria Power Station in Victoria County
- 3 Delivery Voltage: 138 kV
- 4 Metered Voltage: 138kV at the Cooperative's Loop 463 Substation
- 5 Loss Adjustment Due To Meter Location: None
- 6 Normal Operation of Interconnection: Closed
- 7 One-Line Diagram Attached: Yes
- 8 Description of Facilities Installed and Owned by Each Party:

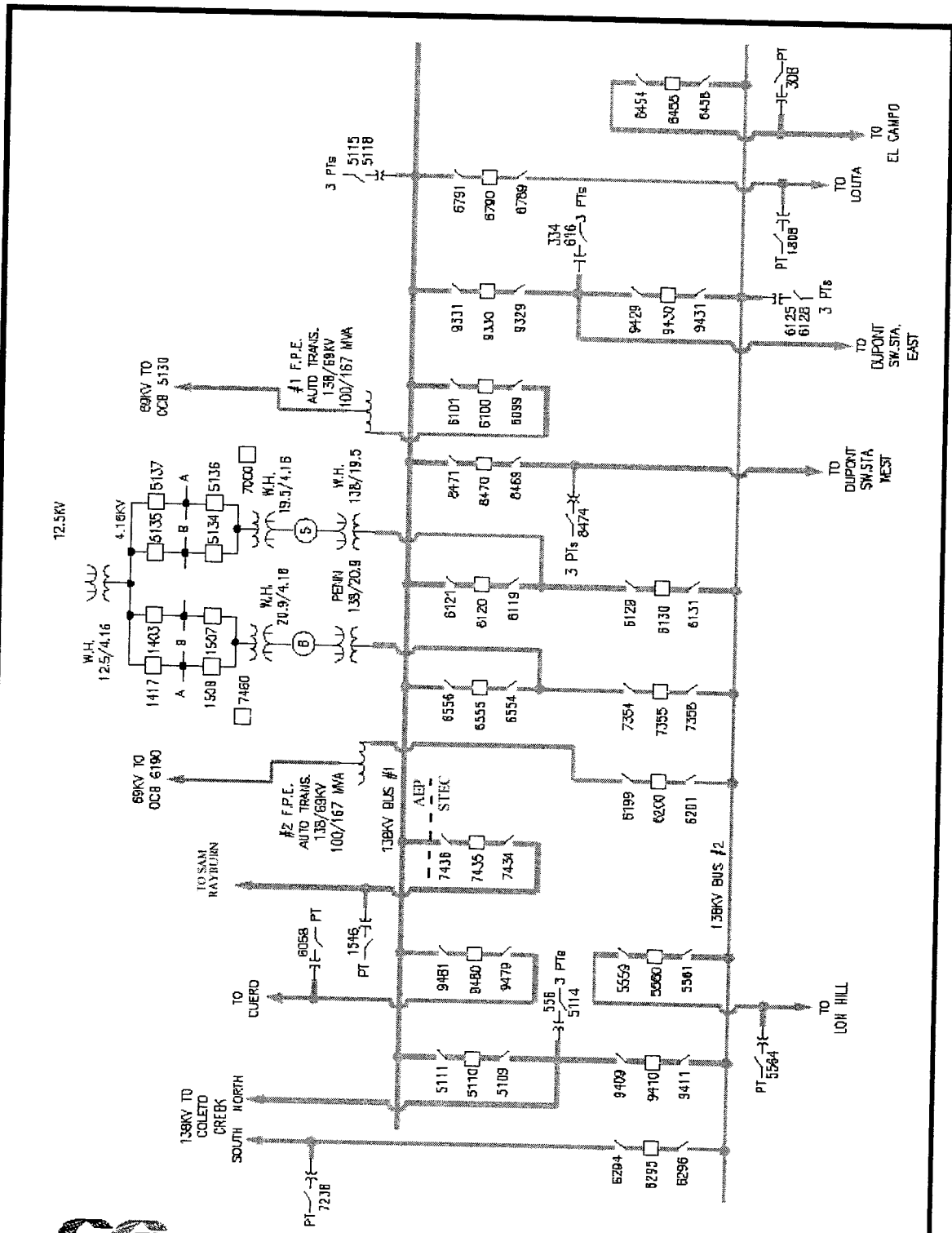
Cooperative furnished and owns the 138kV circuit breaker and associated equipment (including devices 7434, 7435, 7436) required at this substation to terminate the Cooperative 138kV transmission line from the Cooperative's Loop 463 Substation to this interconnection point. Company owns all other equipment at the Victoria Power Station.


Cooperative installed and owns the 138kV transmission line between the Cooperative's Loop 463 Substation and the Company's Victoria Power Station.
- 9 Operational Responsibilities of Each Party:

Company operates all equipment at the Victoria Power Station.
- 10 Maintenance Responsibilities of Each Party:

Maintenance is the responsibility of the equipment owner. If mutually agreeable, Company may perform and bill Cooperative for maintenance of Cooperative equipment.
- 11 Other Terms and Conditions :

None.




VICTORIA POWER STATION SUB #3-66

Central and South West Services

REV.	DR. MJF	DATE: 9-10-97	DIV. CENTRAL-M	EPL	138-69-25-12KV	DWG. NO. 3066S001
------	---------	---------------	----------------	------------	----------------	-------------------

FACILITY SCHEDULE NO. 10

- 1 Name: **Orange Grove**
- 2 Facility Location: Cooperative's Orange Grove 138 kV Station at 134 County Road 308, approximately two miles south of Orange Grove on Hwy 359, Jim Wells County
- 3 Delivery Voltage: 138 kV
- 4 Metered Voltage: From the 138 kV bus PT's and free standing CT's on the line
- 5 Loss Adjustment Due To Meter Location: None
- 6 Normal Operation of Interconnection: Closed
- 7 One-Line Diagram Attached: Yes
- 8 Description of Facilities Installed and Owned by Each Party:

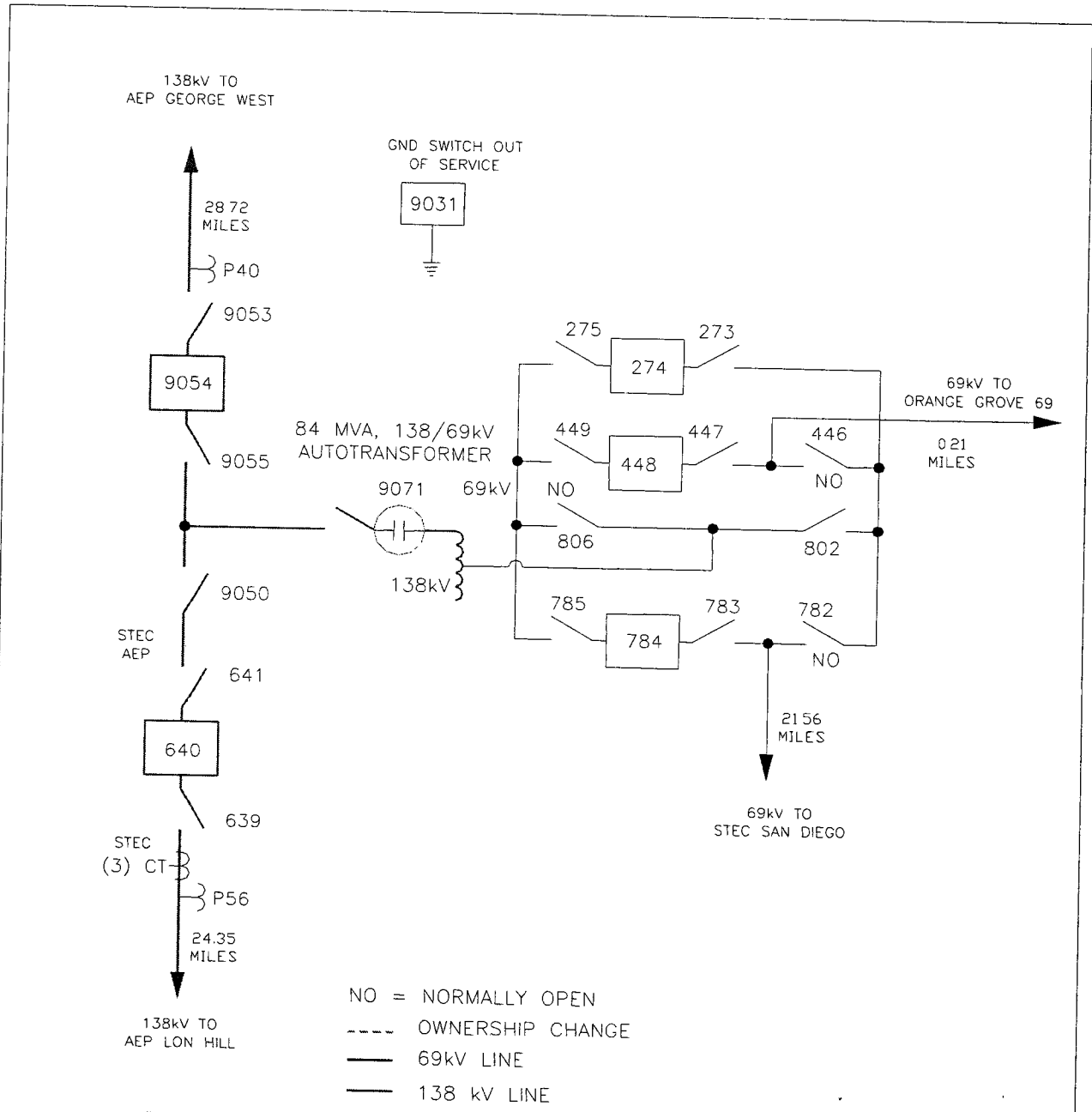
Company owns the 138 kV line constructed from the Company's Lon Hill Power Plant to this station, a Supervisory Remote Terminal Unit (RTU) for status indication and telemetry in the Orange Grove 138kV station control house, and 138kV circuit breaker 640 and associated switches 639 and 641.

Cooperative owns all other equipment at this station including metering equipment, CTs, and PTs.
- 9 Operational Responsibilities of Each Party:

Operations shall be through authorization of the Cooperative.
- 10 Maintenance Responsibilities of Each Party:

Maintenance is the responsibility of the equipment owner. If mutually agreeable, Cooperative may perform and bill Company for maintenance of Company equipment.
- 11 Other Terms and Conditions:

None.



SOUTH TEXAS ELECTRIC COOPERATIVE, INC		DWG NO OG-1A
P.O. BOX 119	NURSERY, TEXAS 77976	
ORANGE GROVE 138kV STATION		FACILITY SCHEDULE 10
JIM WELLS COUNTY		
ORANGE GROVE TIE		
OWN. BY CA	CKD BY	APPD BY
SCALE NA	DATE Apr 9, 2007	

FACILITY SCHEDULE NO. 11

1. Name: **Sigmor Tie Line**
2. Facility Location: Two miles west of Three Rivers in Cooperative's San Miguel to George West 138 kV line in Live Oak County
3. Delivery Voltage: 138 kV
4. Metered Voltage: 138 kV from the 138 kV bus PT's in the Company's Sigmor Station
5. Loss Adjustment Due To Meter Location: None
6. Normal Operation of Interconnection : Closed
7. One-Line Diagram Attached : Yes
8. Description of Facilities Installed and Owned by Each Party:

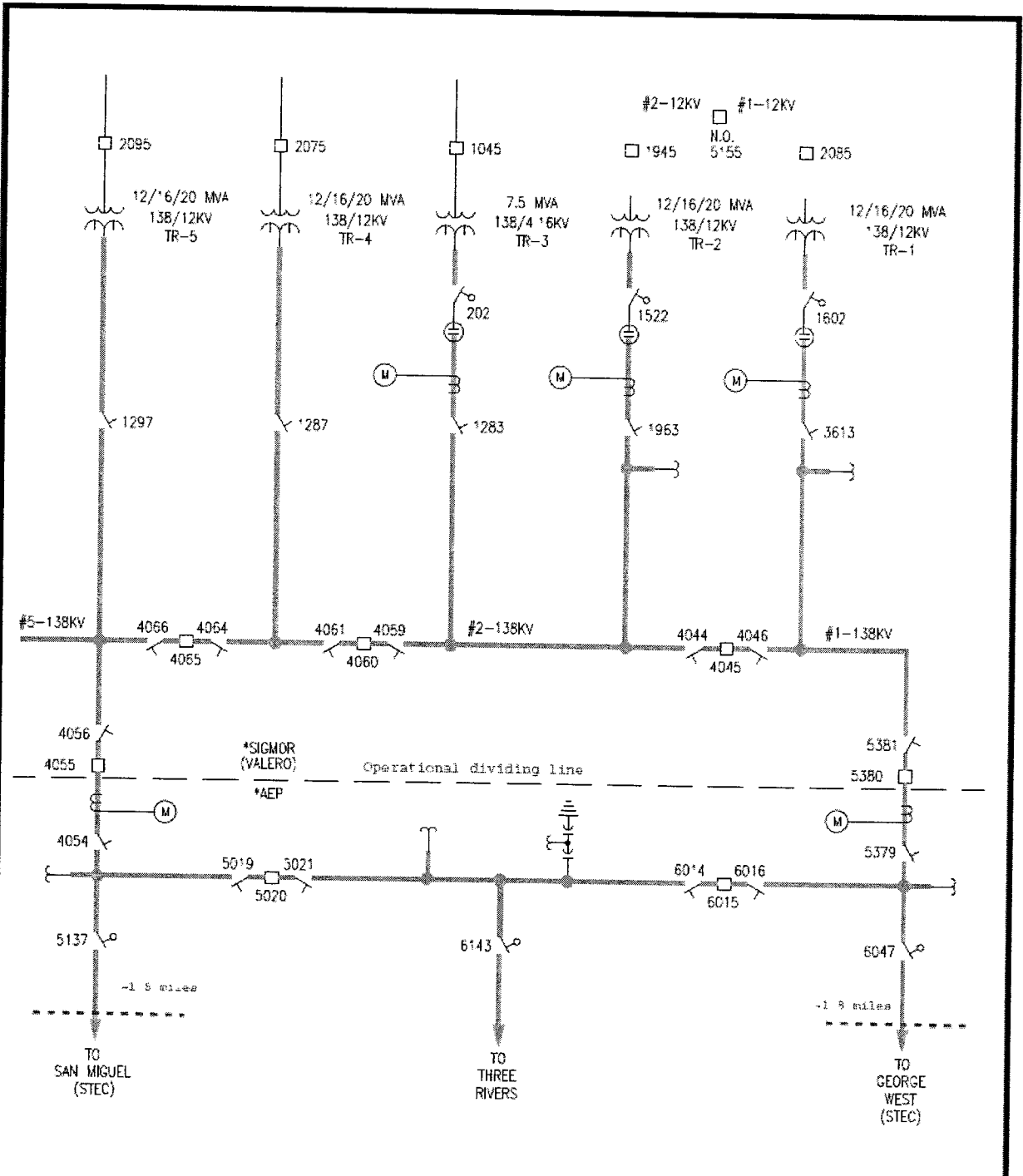
Company owns a substation at the Sigmor Refinery in Three Rivers, Texas, and operates appropriate circuit breakers and required interchange metering at this substation. Company also owns approximately 3.6 miles of 138kV transmission line required to route the Cooperative's San Miguel Power Plant to George West 138kV line into and out of the Company's Sigmor Substation. Company also owns a 138,000 volt transmission line with associated terminals from the Company's Sigmor Substation to the Company's Three Rivers Substation.

Cooperative owns the 138kV transmission line between the STEC George West 138 and San Miguel stations.
9. Operational Responsibilities of Each Party:

Operations are the responsibility of the equipment owner.
10. Maintenance Responsibilities of Each Party:

Maintenance is the responsibility of the equipment owner.
11. Other Terms and Conditions :

None.



- NOTES:
1. * OPERATIONAL DIVIDING LINE
 2. # EQUIPMENT OWNED BY CPL
 3. TOC OWNS 4.0 MILES OF SPEC LINE FROM SIGMOR TOWARDS GEORGE WEST
 4. TOC OWNS 4.0 MILES OF SPEC LINE FROM SIGMOR TOWARDS SAN MIGUEL.

TEXAS CENTRAL COMPANY

SIGMOR SUB. #3092



DRFT. RLC	ENG.	APP.	DATE: 5/27/08	DWG. NO. 30925001	REV 6
-----------	------	------	---------------	-------------------	-------

FACILITY SCHEDULE NO. 12

1. Name: **Calallen**
2. Facility Location: Cooperative's Calallen Substation at 3501 County Road 69 (Hazel Bazemore Rd.) approximately $\frac{3}{4}$ mile south of FM 624 near Calallen in Nueces County
3. Delivery Voltage: 69 kV
4. Metered Voltage: 69 kV
5. Loss Adjustment Due To Meter Location: None
6. Normal Operation of Interconnection: Closed
7. One-Line Diagram Attached: Yes
8. Description of Facilities Installed and Owned by Each Party:

Cooperative owns all equipment in the Calallen substation with the exception of the Company communications equipment connected to the Cooperative provided communications port.

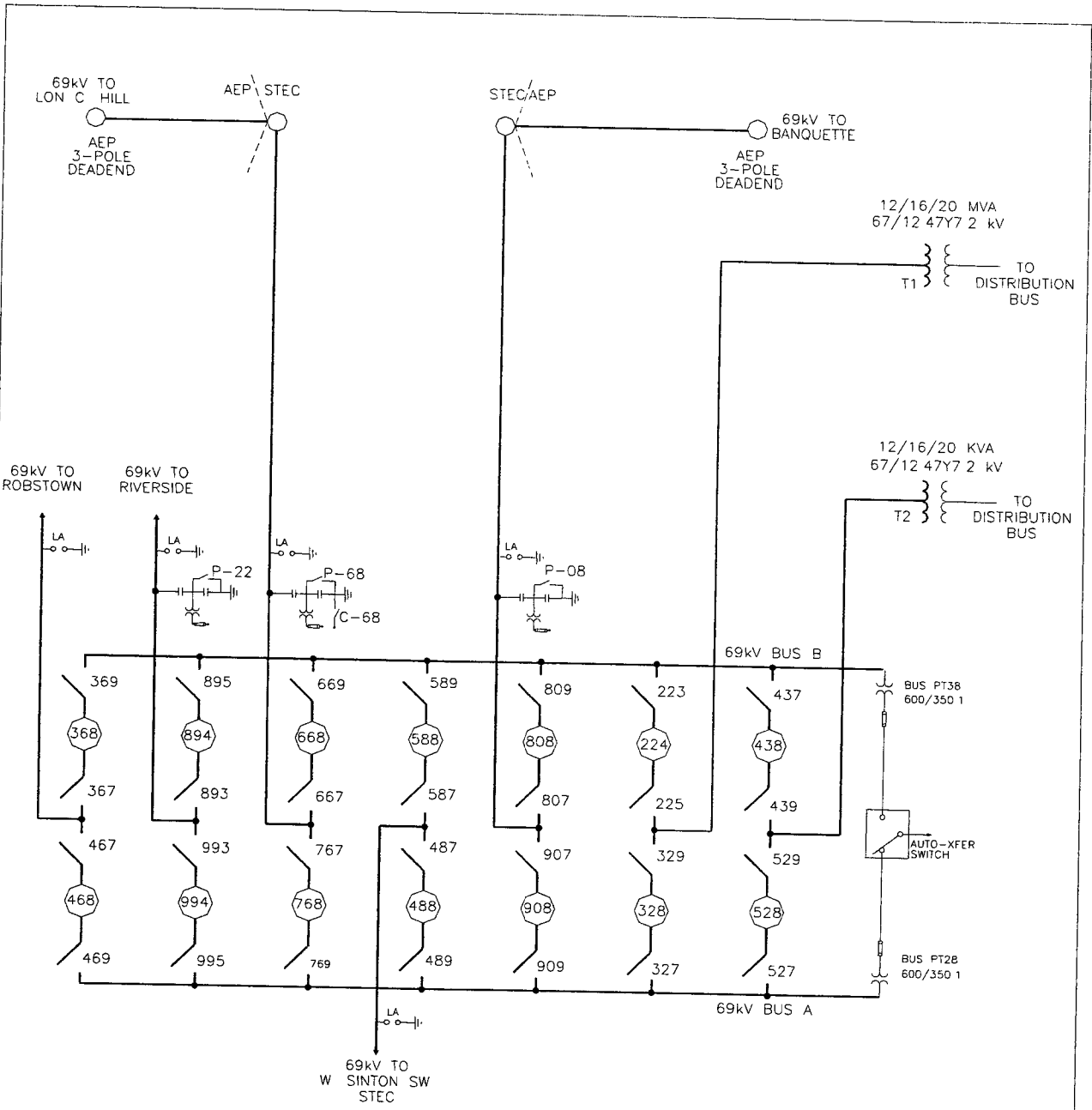
Company owns the 69kV transmission lines from Banquette and Lon C. Hill that terminate at this substation.
9. Operational Responsibilities of Each Party:

Cooperative and Company operate 69kV air switches 807, 907, 667, and 767 and the CCVT switches in the Lon Hill and Banquette 69kV line terminals as per Cooperative dispatch instructions.

Cooperative operates all other equipment in the Calallen substation.
10. Maintenance Responsibilities of Each Party:

Cooperative maintains all equipment in the Calallen substation with the exception of Company's communications equipment connected to the Cooperative provided communications port.
11. Other Terms and Conditions :

Company has access to the substation with a lock in the security fence gate.



SOUTH TEXAS ELECTRIC COOPERATIVE, INC.					DWG NO CA-IA
P O BOX 119		NURSERY, TEXAS 77976			FACILITY SCHEDULE 12
CALALLEN 69/12 47kV SUBSTATION NUECES COUNTY					
CALALLEN TIE					
DWN BY CA	CKD BY	APPD BY	SCALE NA	DATE 1/04	

FACILITY SCHEDULE NO. 13

1. Name: **San Miguel**
2. Facility Location: Cooperative's San Miguel 138/69kV Station at San Miguel Power Plant, Atascosa County
3. Delivery Voltage: 138 kV
4. Metered Voltage: 138 kV from the 138 kV bus PT's and free standing CT's in the Dilley 138kV line terminal
5. Loss Adjustment Due To Meter Location: None
6. Normal Operation of Interconnection: Closed
7. One-Line Diagram Attached: Yes
8. Description of Facilities Installed and Owned by Each Party:

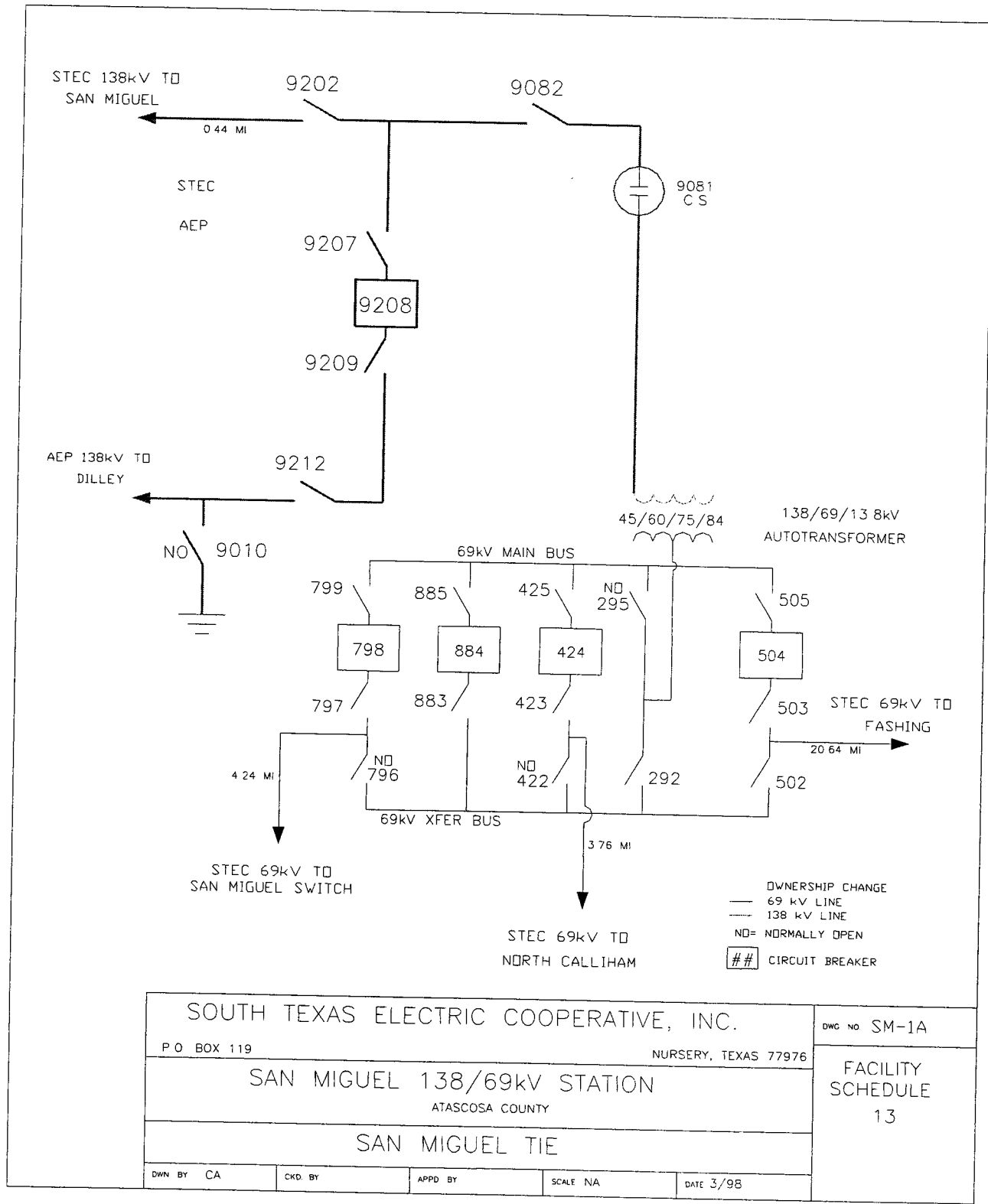
Company owns the 138 kV circuit breaker 9208 and associated equipment including switches 9207, 9209, 9010, and 9212 and the 138kV line constructed from the Company's Dilley Switching station to this station and a Supervisory Remote Terminal Unit (RTU) for status indication and telemetry. Company and Cooperative purchased the associated telecommunication equipment.

Cooperative owns all other equipment at the San Miguel 138/68kV station.
9. Operational Responsibilities of Each Party:

Cooperative operates all equipment in this station. Company and Cooperative operate air switch 9212 and ground switch 9010 as per Cooperative dispatch instructions.
10. Maintenance Responsibilities of Each Party:

Maintenance is the responsibility of the equipment owner.
11. Other Terms and Conditions:

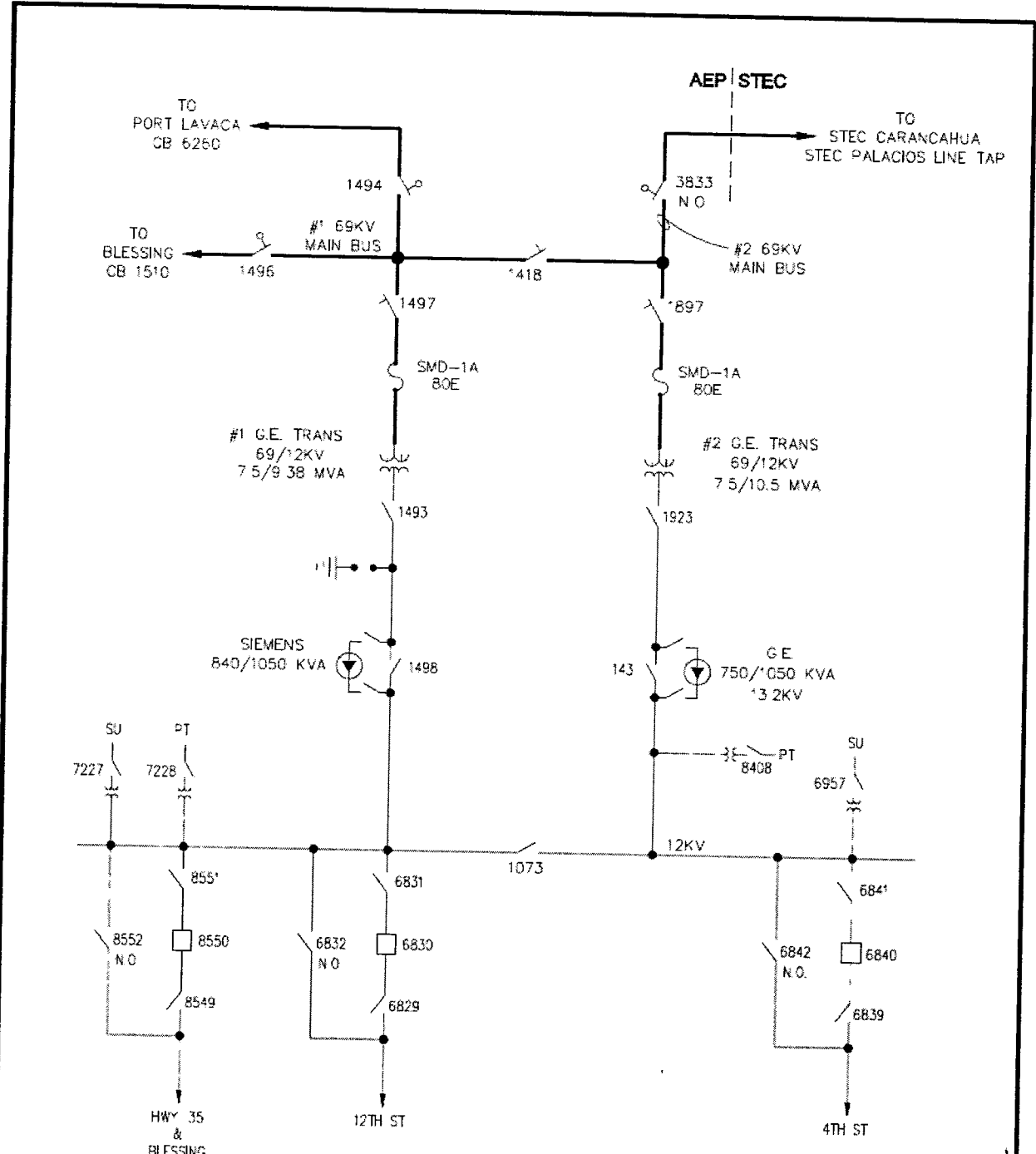
Company must coordinate entry to the San Miguel Plant site with the Cooperative System Operator and San Miguel Electric Cooperative.



SOUTH TEXAS ELECTRIC COOPERATIVE, INC.					DWC NO SM-1A
P O BOX 119		NURSERY, TEXAS 77976			FACILITY SCHEDULE 13
SAN MIGUEL 138/69kV STATION					
ATASCOSA COUNTY					
SAN MIGUEL TIE					
DWN BY CA	CKD BY	APPD BY	SCALE NA	DATE 3/98	

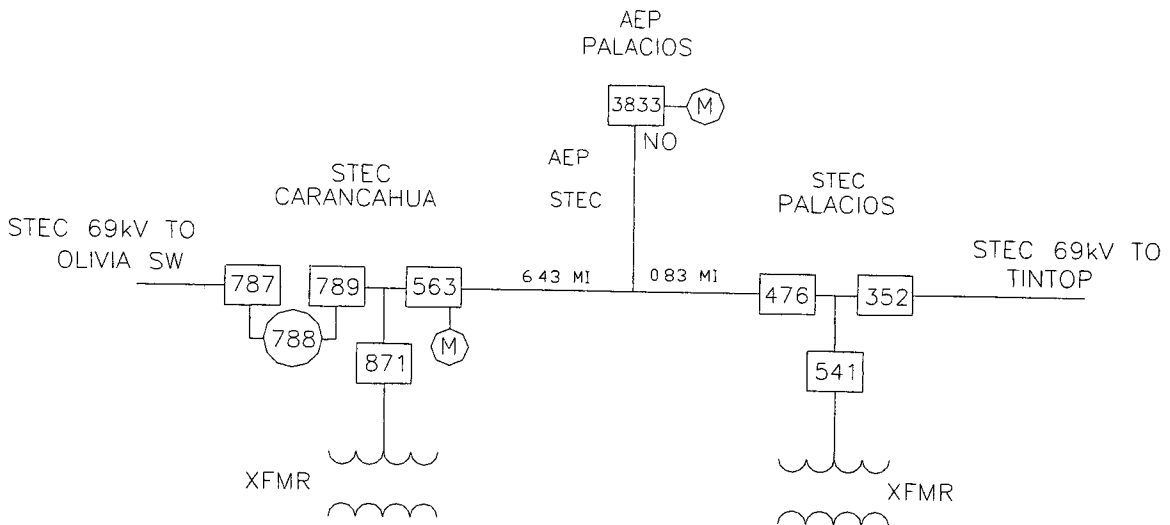
FACILITY SCHEDULE NO. 14

1. Name: **Palacios**
2. Facility Location: Company's Palacios Substation in Matagorda County
3. Delivery Voltage: 69 kV
4. Metered Voltage: None
5. Loss Adjustment Due To Meter Location: None
6. Normal Operation of Interconnection: Open
7. One-Line Diagram Attached: Yes
8. Description of Facilities Installed and Owned by Each Party:
Company owns the motor operated switch at the interconnection and all other equipment at the Company's Palacios substation.
Cooperative owns the 69kV transmission line connecting the Cooperative's Palacios substation to the Cooperative's Carancahua Substation which is tapped by this interconnection.
9. Operational Responsibilities of Each Party:
Switch 3833 is dispatched by Company and operated by Company or Cooperative through appropriate switching order.
10. Maintenance Responsibilities of Each Party:
Company maintains switch # 3833.
11. Other Terms and Conditions : None



ENTIRE STATION OWNED
& OPERATED BY AEP
EXCEPT AS NOTED

TEXAS CENTRAL COMPANY		PALACIOS #3084		69/12KV	
APP'D BY :	DR. BY :RLC	CH. BY :	DATE : 12/16/09	ONE LINE DIAGRAM	
		1 RIVERSIDE PLAZA COLUMBUS, OH 43215		Work Order #:	



NO = NORMALLY OPEN

69kV AIR SWITCH

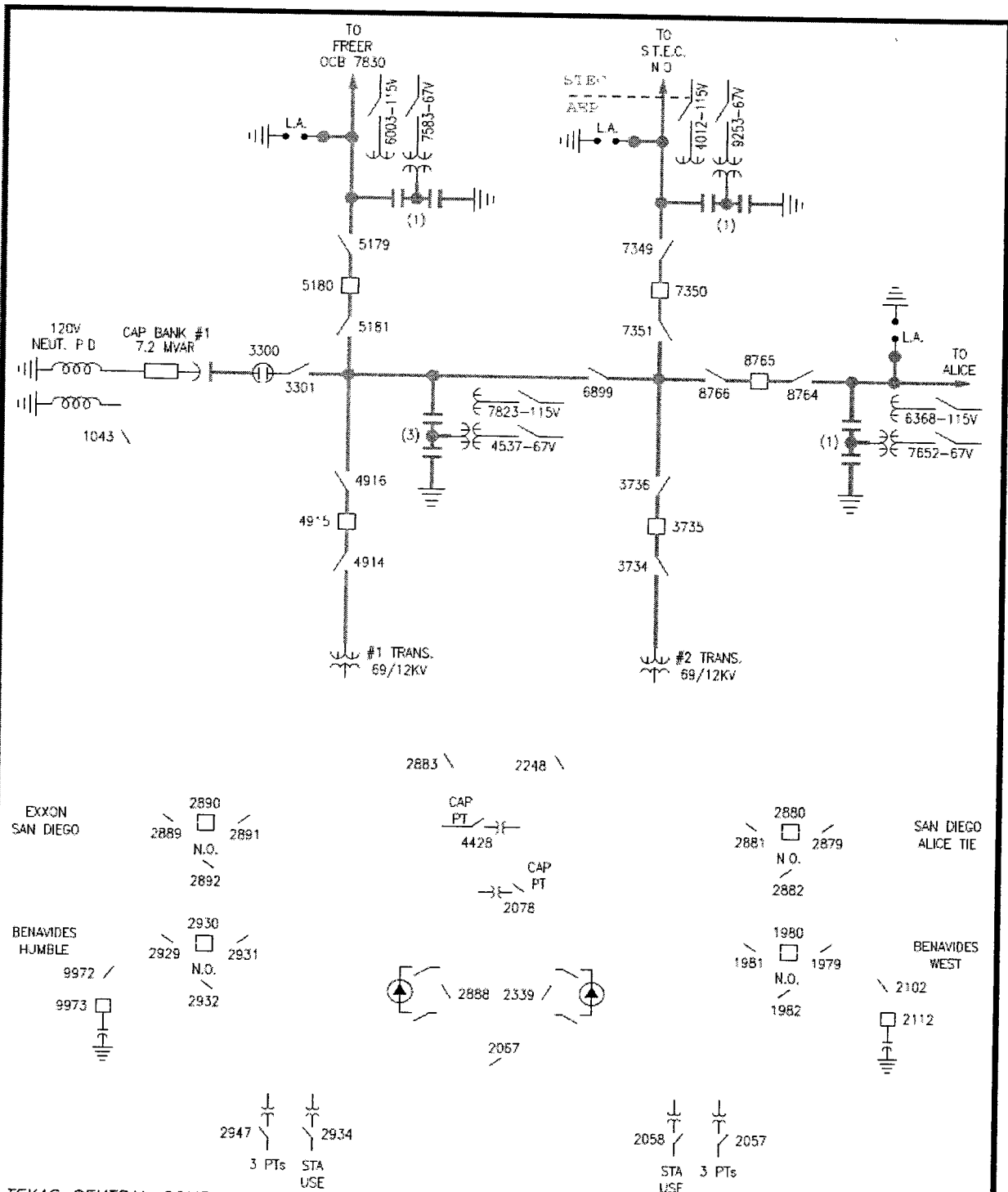
69kV GAS CIRCUIT BREAKER

(M) MOTOR OPERATOR

SOUTH TEXAS ELECTRIC COOPERATIVE, INC.					DWG NO PC-1A
P.O. BOX 119			NURSERY, TEXAS 77976		FACILITY SCHEDULE 14
PALACIOS 69kV ONELINE MATAGORDA COUNTY					
PALACIOS TIE					
DWN BY CA	CKD BY	APPD BY	SCALE NA	DATE Apr 10, 2007	

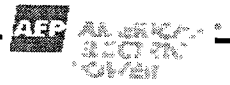
FACILITY SCHEDULE NO. 15

1. Name: **San Diego**
2. Facility Location: Company's San Diego Substation approx 0.6 miles on FM 1329 from the intersection with 359 in San Diego, Duval County
3. Delivery Voltage: 69 kV
4. Metered Voltage: None
5. Loss Adjustment Due To Meter Location: None
6. Normal Operation of Interconnection: Open
7. One-Line Diagram Attached: Yes
8. Description of Facilities Installed and Owned by Each Party:
Company owns all the equipment in the Company's San Diego substation.
Cooperative owns the 69kV transmission line connecting the Cooperative San Diego substation to the Company's San Diego substation and all equipment in the Cooperative's San Diego substation.
9. Operational Responsibilities of Each Party:
Operations is performed by the equipment owner.
10. Maintenance Responsibilities of Each Party:
Maintenance is the responsibility of the equipment owner.
11. Other Terms and Conditions : None

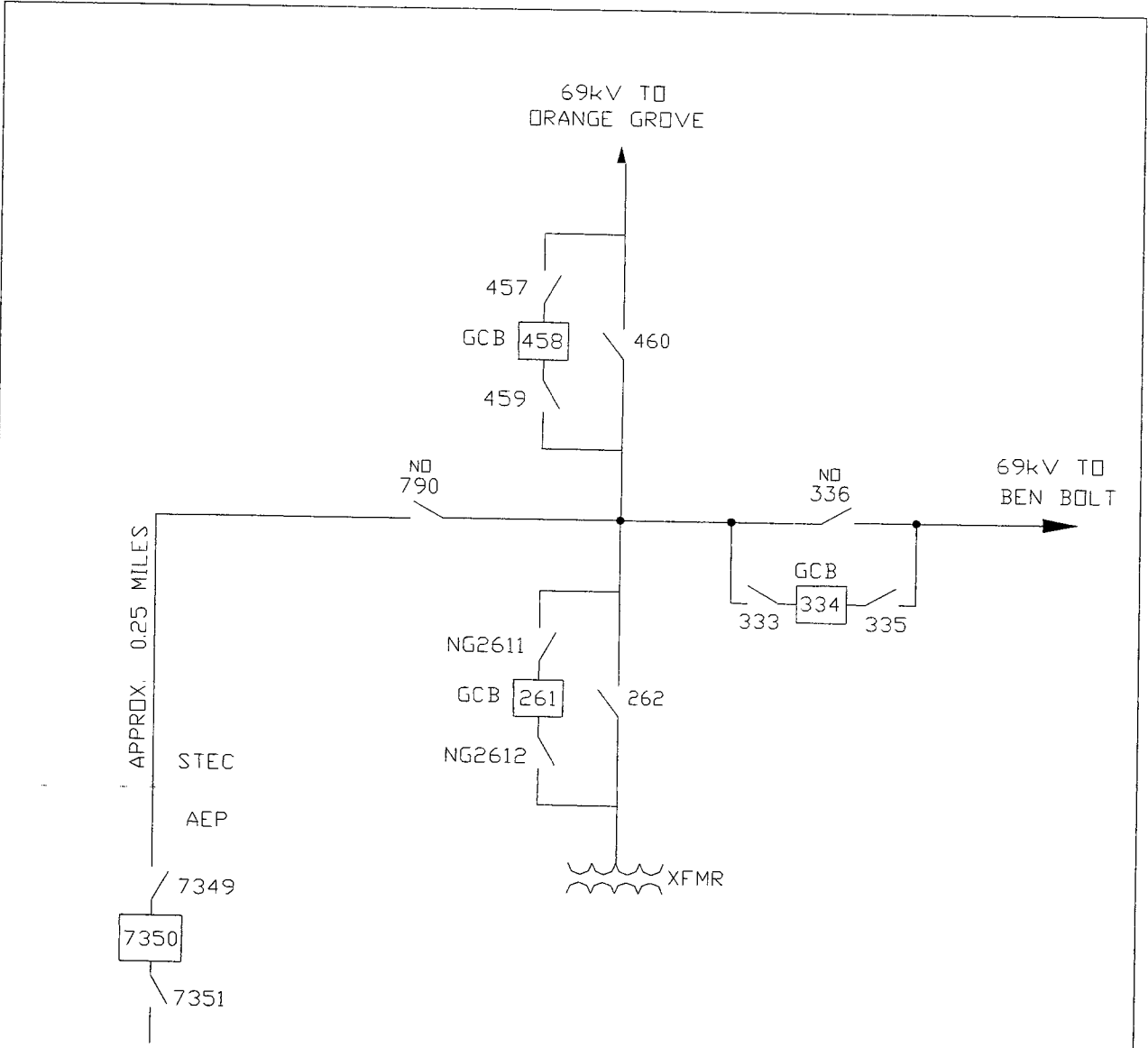


TEXAS CENTRAL COMPANY

SAN DIEGO SUB. NO. 7088 - WESTERN DIV.



DRFT RLC	ENG.	APP.	DATE: 6/24/08	DWG. NO. 7088S001	REV 5
----------	------	------	---------------	-------------------	-------



AEP SAN DIEGO SUBSTATION

SOUTH TEXAS ELECTRIC COOPERATIVE, INC.				DWG NO SD-IA
NURSERY, TEXAS 77976				FACILITY SCHEDULE 15
SAN DIEGO 69/24.94kV SUBSTATION				
DUVALL COUNTY				
SAN DIEGO TIE				
DWN BY CA	CKD BY	APPD BY	SCALE NA	DATE 1/10

FACILITY SCHEDULE NO. 16

1. Name: **CORUS**
2. Facility Location: Cooperative's City of Robstown (CORUS) Station on Power Plant Road, Robstown, Nueces County
3. Delivery Voltage: 69 kV
4. Metered Voltage: 69 kV
5. Loss Adjustment Due To Meter Location: NONE
6. Normal Operation of Interconnection: Closed
7. One-Line Diagram Attached: Yes
8. Description of Facilities to be Installed and Owned by Each Party:

Cooperative owns the 69kV rated equipment and associated materials, including the 69kV bus, at the CORUS substation that terminates and protects the Company's Lon Hill 69kV line and the Cooperative's Riverside 69kV line.

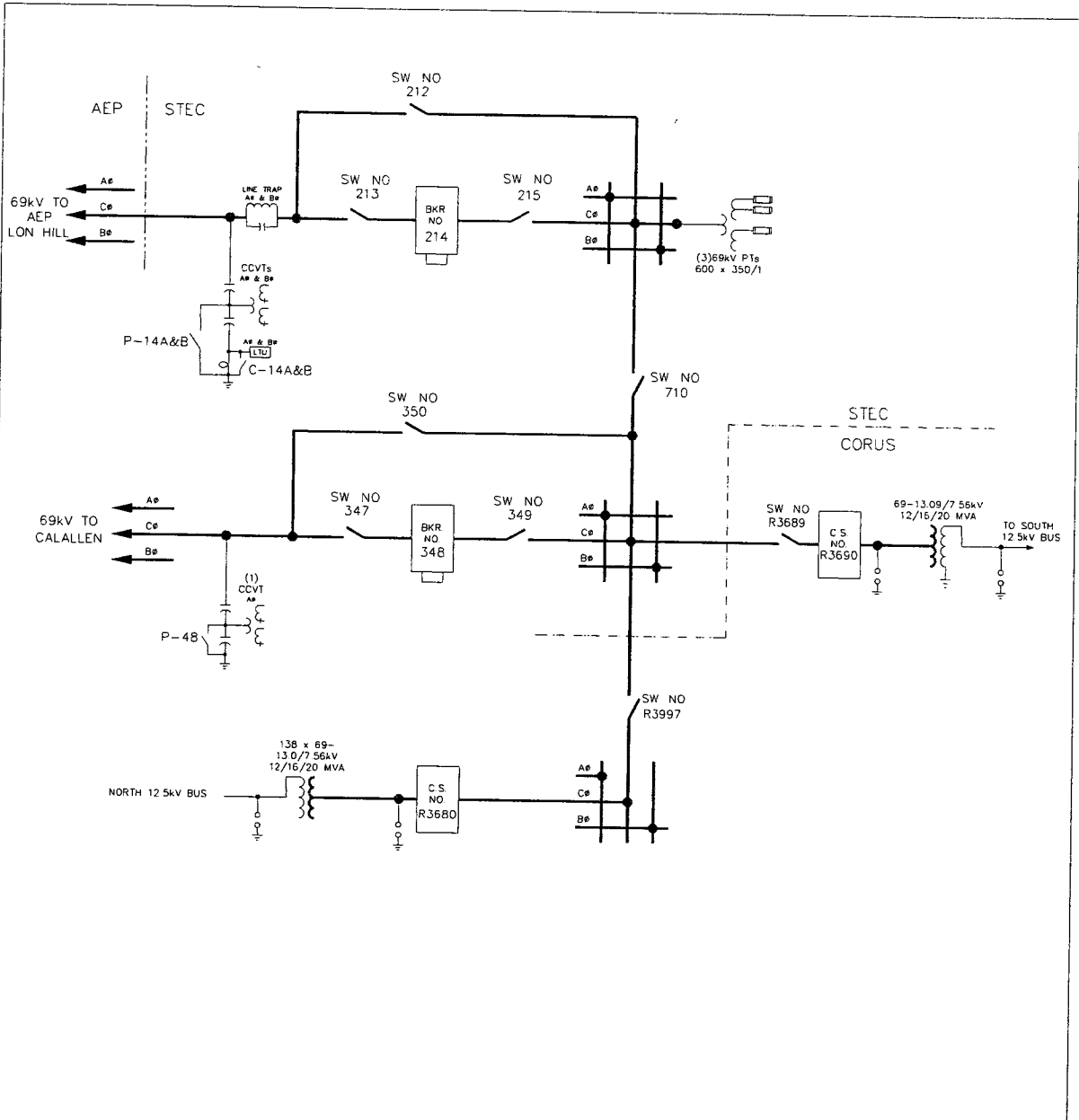
Company owns the 69 kV transmission line from the CORUS 69 kV substation dead end structure to the Company's Lon C. Hill Station.
9. Operational Responsibilities of Each Party:

Cooperative will control and operate all 69 kV facilities and associated equipment at the CORUS substation. All operations of the interconnect will be coordinated with Company using good utility practices.

Company will control and operate the transmission facilities associated with the above described interconnection up to but NOT including the Cooperative facilities and equipment at the CORUS substation. All operations of the interconnect will be coordinated with Cooperative using good utility practices. Further, Company may operate air switches # 212 and # 213 as per Cooperative dispatch instruction.
10. Maintenance Responsibilities of Each Party:

Maintenance is the responsibility of the equipment owner.
11. Other Terms and Conditions:

Company has access to the station with a lock in the security fence gate if such access is acceptable to the City of Robstown Utility Service.



SOUTH TEXAS ELECTRIC COOPERATIVE, INC.		DWG. NO. COR-IA
NURSERY, TEXAS 77976		FACILITY SCHEDULE 16
CITY OF ROBSTOWN (CORUS) 69kV SUBSTATION		
NUECES COUNTY		
CORUS TIE		
DWN BY CA	CKD BY	APPD BY
SCALE NA		DATE 1/04

FACILITY SCHEDULE NO. 17

(TERMINATED)

1. Name: **Pioneer**

2. Facility Location:

At the existing Texas Industries (TXI) Substation located approximately 6.2 miles north of Garwood, approximately 2 miles west of the intersection of State Highway 71 and County Road 111 across from the TXI Plant.

FACILITY SCHEDULE NO. 18

(TERMINATED)

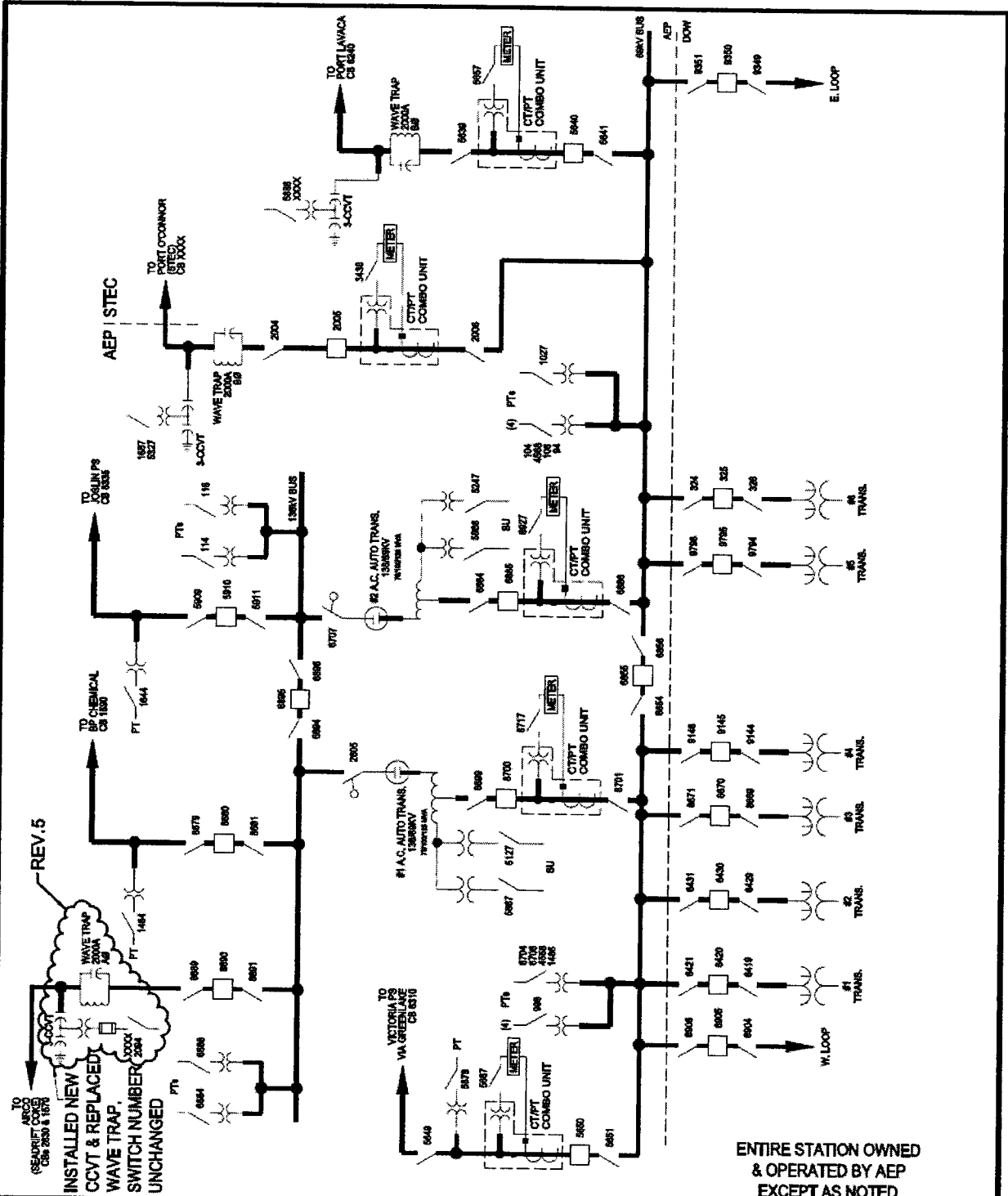
1. Name: **Pawnee**

2. Facility Location:

Near the Intersection of FM 882 and SH 72 near Pawnee, Texas along the existing right of way of the CPS Spruce to CPL Lon Hill 345 kV transmission line. The exact location will be mutually agreed upon through a joint line route selection study.

FACILITY SCHEDULE NO. 19

1. Name: **Carbide**
2. Facility Location: Company's Union Carbide Substation at Dow/Union Carbide Plant near Seadrift, Calhoun County
3. Delivery Voltage: 69 kV
4. Metered Voltage: 69kV
5. Loss Adjustment Due To Meter Location: None
6. Normal Operation of Interconnection: Closed
7. One-Line Diagram Attached: Yes
8. Description of Facilities to be Installed and Owned by Each Party:
At its cost, Cooperative shall design, construct and own a new 69 kV transmission line from its existing Seadrift Substation to Company's existing Carbide 69 kV Substation.
At its cost, Company shall design, construct and own all facilities at its Carbide 69 kV Substation for this interconnection including protective equipment, interconnection metering equipment, dual ported RTU, and RTU communication circuit to Company's dispatch control center. Company shall provide a substation dead end structure for termination of the 69 kV line from Cooperative's Seadrift Substation.
9. Operational Responsibilities of Each Party:
Operations shall be the responsibility of the equipment owner.
10. Maintenance Responsibilities of Each Party:
Maintenance is the responsibility of the equipment owner.
11. Other Terms and Conditions Attached: None



TEXAS CENTRAL COMPANY		CARBIDE #3083		138/69KV	
APP'D BY :	DR. BY : GEG	CH. BY :	DATE : 1/6/10	ONE LINE DIAGRAM	
		1 RIVERSIDE PLAZA COLUMBUS, OH 43215		DISPATCHING	
Work Order #:				DWG. No. 3083SO01	REV 6

FACILITY SCHEDULE NO. 20

1. Name: **Warburton**
2. Facility Location: Cooperative's Warburton 138/69kV Station at 400 Warburton Road, McFadden. Victoria County
3. Delivery Voltage: 138 kV
4. Metered Voltage: 138 kV
5. Loss Adjustment Due To Meter Location: None
6. Normal Operation of Interconnection : Closed
7. One-Line Diagram Attached : Yes
8. Description of Facilities to be Installed and Owned by Each Party:

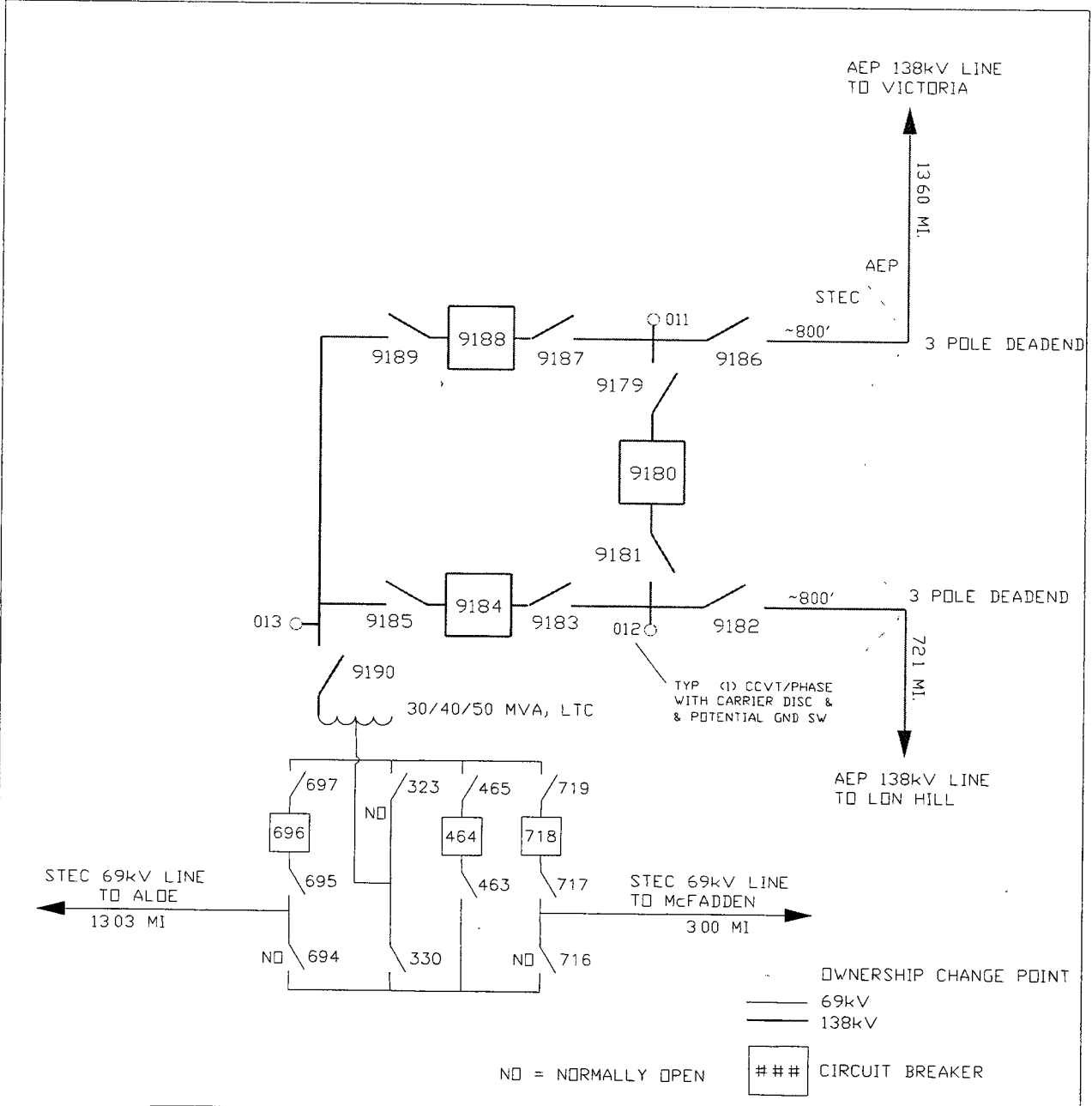
Cooperative owns all equipment in the Warburton station including a three breaker 138kV ring bus and associated equipment. Cooperative installed and owns the approximately 800 foot 138 kV lines between its station and the existing Company owned Victoria - Lon-Hill 138 kV line with the exception of the two three-pole deadends in that existing Company line. Cooperative provides an RTU port to Company for transmission of data points as agreed upon by both parties.

Company owns the Victoria to Lon Hill 138kV line and the two (2), three pole wood deadend structures and associated guying facilities required to connect this line to the Cooperative station.
9. Operational Responsibilities of Each Party:

Cooperative controls and operates all equipment and facilities within its Warburton station and the 138 kV lines between the station and Company's Victoria - Lon Hill 138 kV line. Company shall have access to the station and may operate 138 kV air switches 9182 and 9186 according to Cooperative dispatch instructions.
10. Maintenance Responsibilities of Each Party:

Maintenance is the responsibility of the equipment owner.
11. Other Terms and Conditions Attached:

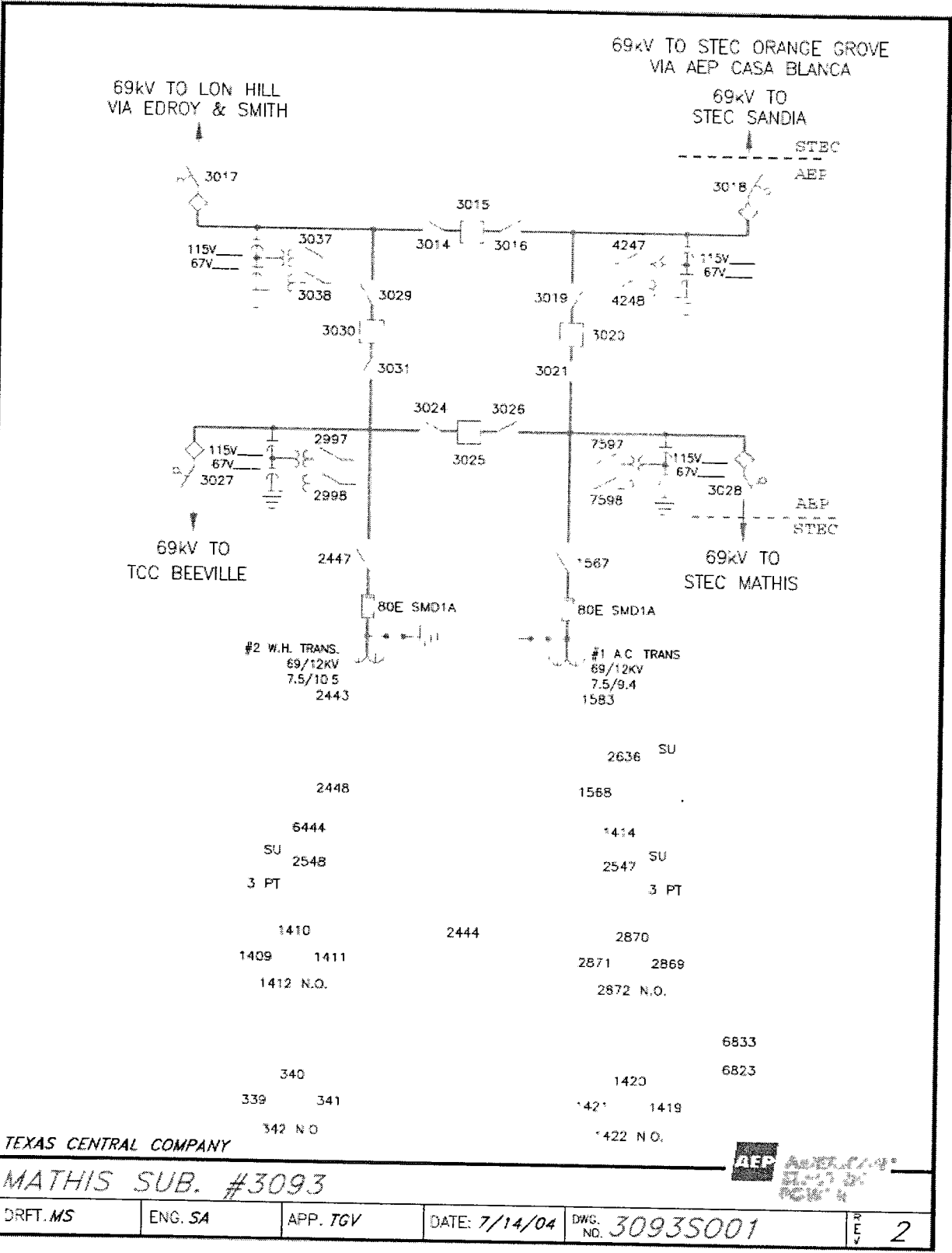
If Cooperative is reasonably able to obtain the easement with the right to assign the 138 kV line from the substation to the three pole deadend structures installed in Company's Victoria-Lon Hill 138 kV line and Cooperative determines that the landowner relationship will not be damaged by Cooperative passing the ownership of such line to Company, it shall pass ownership of the easement and the transmission line facilities upon it to Company at the end of five (5) years from the date of this Facility Schedule. Until these conditions are met, Cooperative shall retain ownership of this line.



SOUTH TEXAS ELECTRIC COOPERATIVE, INC.					DWG NO WA-1A
P.O. BOX 119		NURSERY, TEXAS 77976			FACILITY SCHEDULE 20
WARBURTON 138/69kV STATION					
VICTORIA COUNTY					
WARBURTON TIE					DATE 1/10
DWN BY CA	CKD BY	APPD BY	SCALE NA		

FACILITY SCHEDULE NO. 21

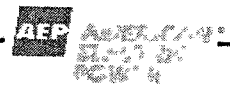
1. Name: **Mathis**
2. Facility Location: Company's Mathis Substation in San Patricio County, Texas
3. Delivery Voltage: 69 kV
4. Metering Voltage: 69 kV
5. Loss Adjustment Due To Meter Location: None
6. Normal Operation of Interconnection: Closed
7. One-Line Diagram Attached: Yes
8. Description of Facilities to be Installed and Owned by Each Party:
Company owns all equipment at the Company Mathis substation.
Cooperative owns all equipment at the Cooperative's Mathis substation and the double circuit 69kV line that hairpins the Cooperative's Mathis to Sandia 69kV line including the hardware required to deadend the conductors to the Company substation steel structure.
9. Operational Responsibilities of Each Party:
Company will operate those facilities it owns.
Cooperative will operate those facilities it owns and, in order to expedite return of service following a contingency outage or to perform scheduled maintenance of a Cooperative line terminating at this substation, Cooperative shall have the right to open the 69kV air switches 3018 and 3028 under Company dispatch instructions.
10. Maintenance Responsibilities of Each Party:
Maintenance is the responsibility of the equipment owner.
11. Other Terms and Conditions:
Cooperative has access to the Company's Mathis substation with a lock in the station gate.



FILE: 30935001.DWG 14:56:44 07/14/04

TEXAS CENTRAL COMPANY

MATHIS SUB. #3093



DRFT. MS	ENG. SA	APP. TGV	DATE: 7/14/04	DWG. NO. 30935001	REV 2
----------	---------	----------	---------------	-------------------	-------

FACILITY SCHEDULE NO. 22

1. Name: **Batesville**
2. Facility Location: Cooperative Batesville Substation at 18802 FM 1025, Batesville, Zavala County
3. Delivery Voltage: 138 kV
4. Metered Voltage: No revenue meter. See Other Terms and Conditions.
5. Loss Adjustment Due To Meter Location: Yes
6. Normal Operation of Interconnection: Closed
7. One-Line Diagram Attached: Yes
8. Description of Facilities Installed and Owned by Each Party:

Company installed and owns the 138 kV line between this Point of Interconnection and Company's West Batesville Switching Station. Cooperative installed, but Company owns the terminal circuit breaker OCB 4908, switch 4907, switch 4909 and associated relaying that tie to Company's 138 kV line in Cooperative's Batesville Substation.

Cooperative installed and owns the remaining equipment located at the Cooperative Batesville Substation.
9. Operational Responsibilities of Each Party:

Cooperative operates OCB 4908 and all other equipment in Cooperative's Batesville station.

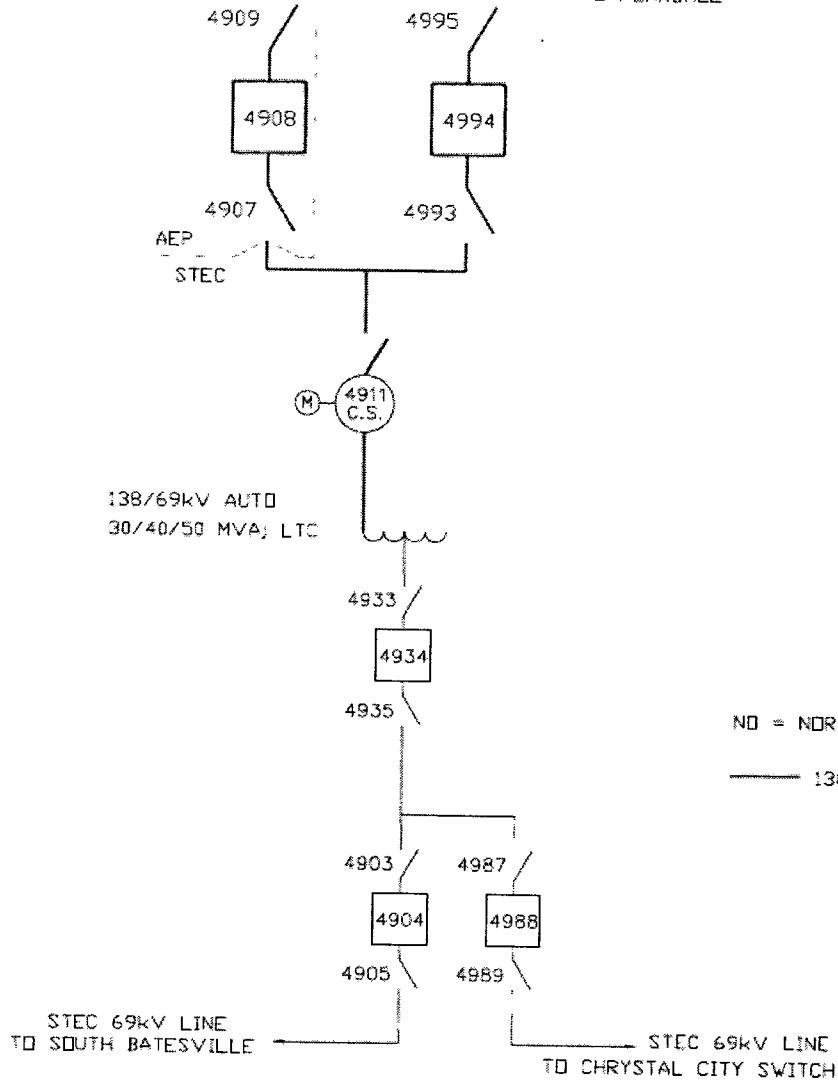
Company operates the equipment it owns with the exception of OCB 4908 and associated equipment.
10. Maintenance Responsibilities of Each Party:

Company maintains the 138 kV line from the Company's West Batesville Switching Station to the Cooperative's Batesville Substation. Company is responsible for the maintenance of OCB 4908, switch 4907, switch 4909 and associated relaying.

Cooperative maintains all remaining equipment at the Cooperative's Batesville Substation.
11. Other Terms and Conditions:

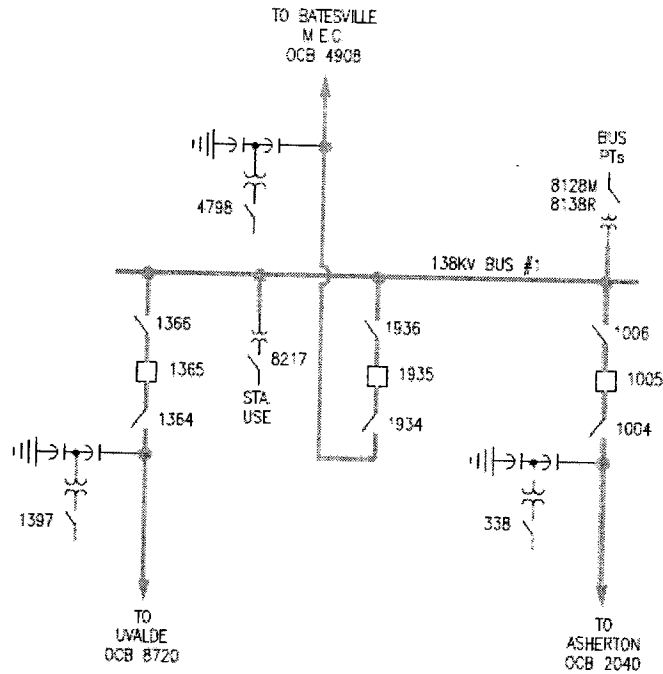
AEP 138kV LINE
TO WEST BATESVILLE

STEC 138kV LINE
TO PEARSALL



SOUTH TEXAS ELECTRIC COOPERATIVE, INC.				DWG NO	BA-1A
P O BOX 119		NURSERY, TEXAS 77976		FACILITY SCHEDULE 23	
BATESVILLE 138/69kV STATION					
ZAVALA COUNTY					
BATESVILLE TIE					
OWN BY	CA	CKD BY	APPD BY	SCALE	DATE 4/2008

GPS LOCATION:
 N28* 58.3 / W99* 43.2



TEXAS CENTRAL COMPANY

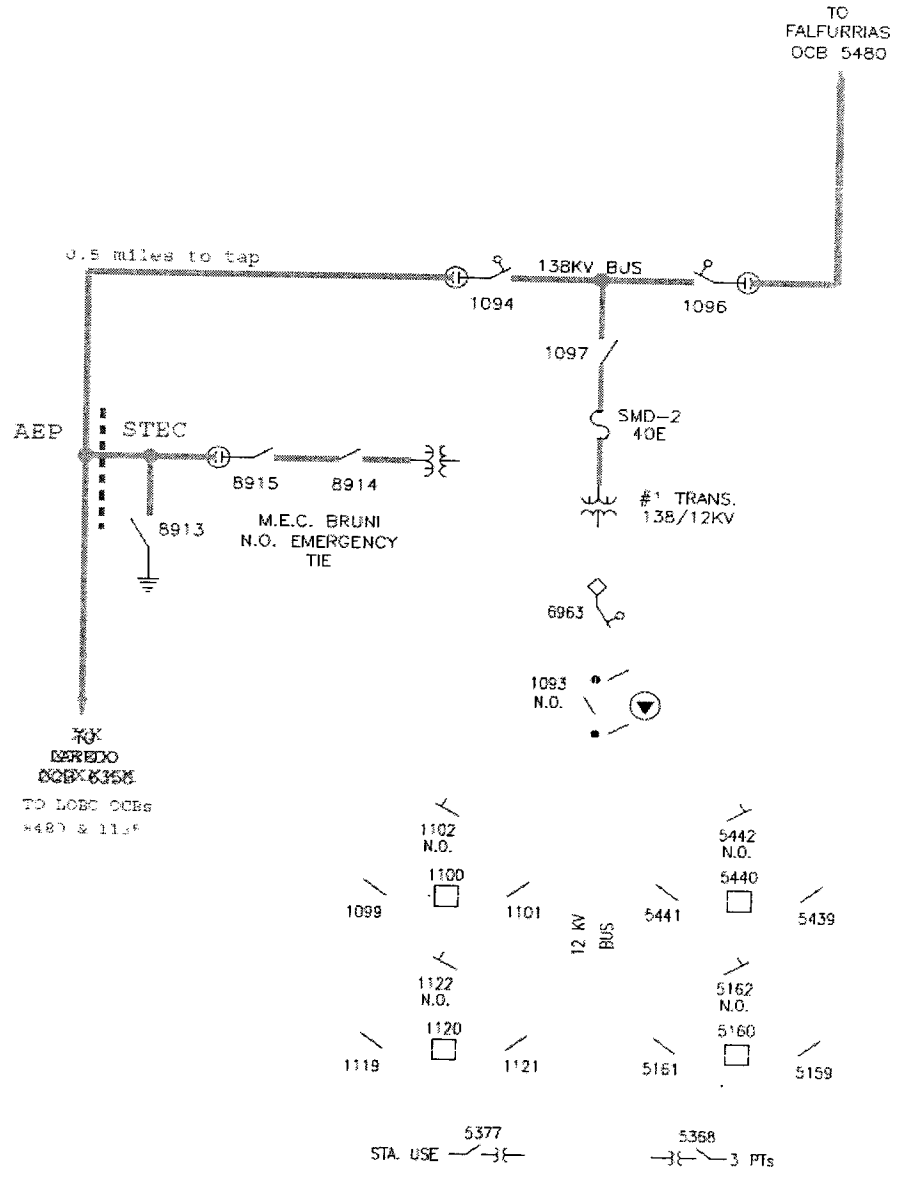
WEST BATESVILLE SW. STA. SUB #7095 - WEST DIV.

DRFT. CAS	ENG.	APP.	DATE. 6/20/03	DWG. NO. 7095S001	REV. 1
-----------	------	------	---------------	-------------------	--------

FACILITY SCHEDULE NO. 23

1. Name: **Bruni**
2. Facility Location: Cooperative Bruni Station at 1300 FM 2050, Bruni, Webb County
3. Delivery Voltage: 138 kV
4. Metered Voltage: No Revenue Meter. See Other Terms and Conditions.
5. Loss Adjustment Due To Meter Location: No
6. Normal Operation of Interconnection: Open
7. One-Line Diagram Attached: Yes
8. Description of Facilities Installed and Owned by Each Party:
Cooperative installed and owns the tap line connecting its Bruni Station to the Company's Bruni – Lobo 138 kV line about 0.5 miles south of Company's Bruni Substation. Cooperative installed and owns the equipment in the Cooperative's Bruni Station.
9. Operational Responsibilities of Each Party:
Cooperative is responsible for the operation of the normally open Switch 8915, normally open Switch 8914 and normally open Grounding Switch 8913.
10. Maintenance Responsibilities of Each Party:
Company is responsible for line maintenance up to the 1st structure after Company's Bruni – Lobo 138 kV line tap.
Cooperative is responsible for the maintenance of the 138 kV tap line beginning with the first structure to the Cooperative's Bruni Substation from the tap point. Cooperative is responsible for all substation equipment in the Cooperative's Bruni Substation.
11. Other Terms and Conditions:
Cooperative may operate this Bruni Emergency Tie normally closed.

GPS LOCATION:
 N27* 26.11 / W98* 49.8



TEXAS CENTRAL COMPANY

BRUNI SUB #7041 - WEST DIV.

DRFT. MS	ENG.	APP.	DATE: 3/17/05	DWG. NO. 7041S001	2
----------	------	------	---------------	-------------------	---

FACILITY SCHEDULE NO. 24
Terminated

1. Name: **Devine**
2. Facility Location: Cooperative's Devine Substation at 1026 Hwy 132S,
Devine, Medina County

FACILITY SCHEDULE NO. 25

1. Name: **Dilley**
2. Facility Location: Company's Dilley Switching Station at 1755 CR 4675, Dilley, Frio County
3. Delivery Voltage: 138 kV and 69kV
4. Metered Voltage: 138 kV and 69kV
5. Loss Adjustment Due To Meter Location: None
6. Normal Operation of Interconnection: Closed
7. One-Line Diagram Attached: Yes
8. Description of Facilities Installed and Owned by Each Party:

Cooperative installed and owns 138kV air switch 6112; circuit switcher 6111; 138/69kV autotransformer; and the 69kV equipment connected to its autotransformer including circuit breakers and air switches 6117, 6118, 6119, 6147, 6148, 6149, 6153, 6154, 6155, including buswork, arrestors, and instrument transformers, and the buswork up to Company's switch 1684. Cooperative owns switch 6273, breaker 6274, power transformer and associated primary and secondary side equipment. Cooperative shall install and own a 138kV transmission line connecting Company's 138kV at this station to Cooperative's Palo Duro Station.

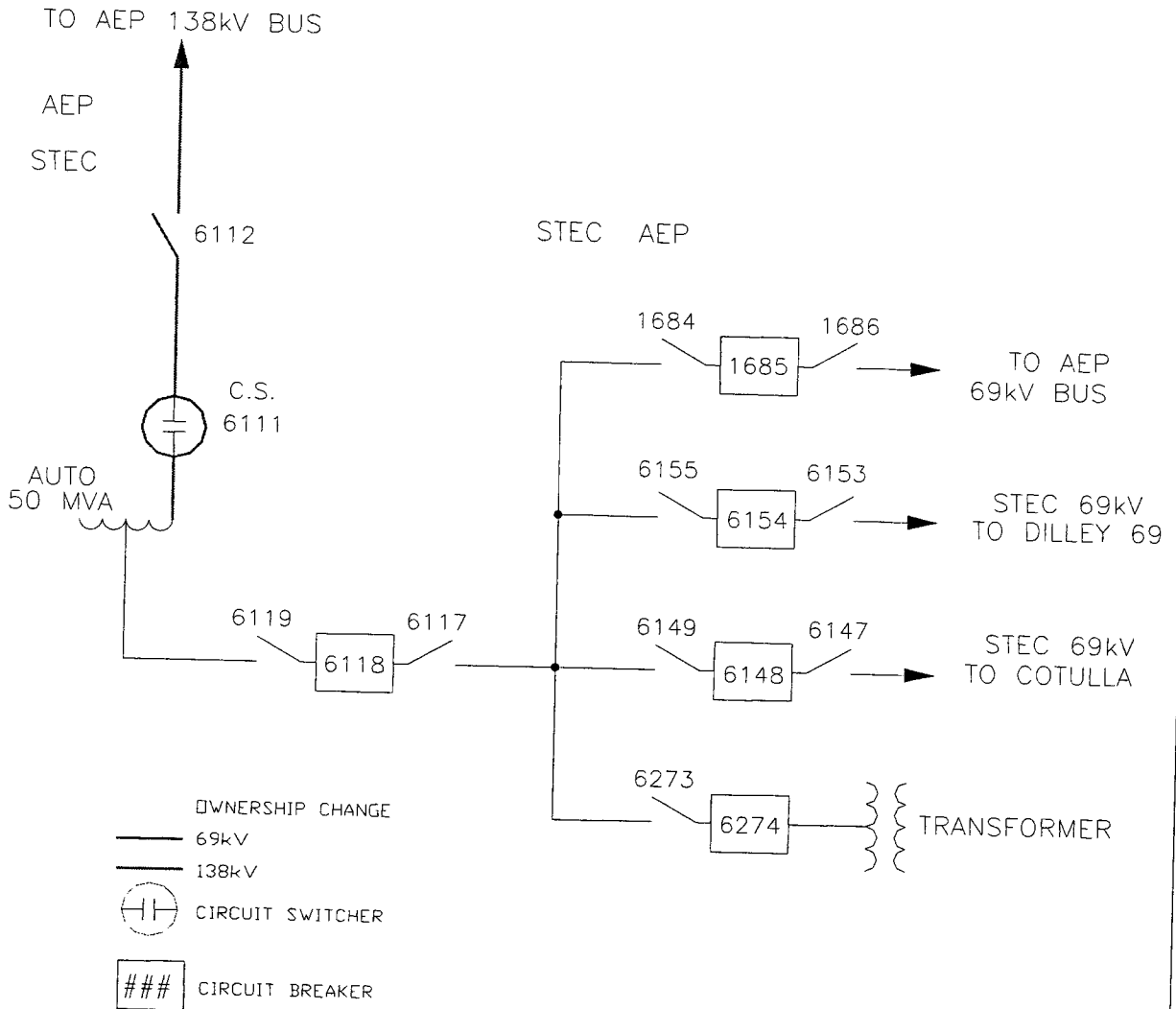
Company installed and owns all equipment beginning at but not including switch 6112 and back to the Company Switching Station including 138kV equipment, autotransformer, 69kV bus and line terminals, and a static var compensator facility. Company shall install and own all equipment necessary for the termination of Cooperative's 138kV line to Palo Duro.

Control house is owned by Company and allows Cooperative space for its equipment. Both parties own property at this site.
9. Operational Responsibilities of Each Party:

Operations is the responsibility of the equipment owner.
10. Maintenance Responsibilities of Each Party:

Maintenance is the responsibility of the equipment owner.
11. Other Terms and Conditions:

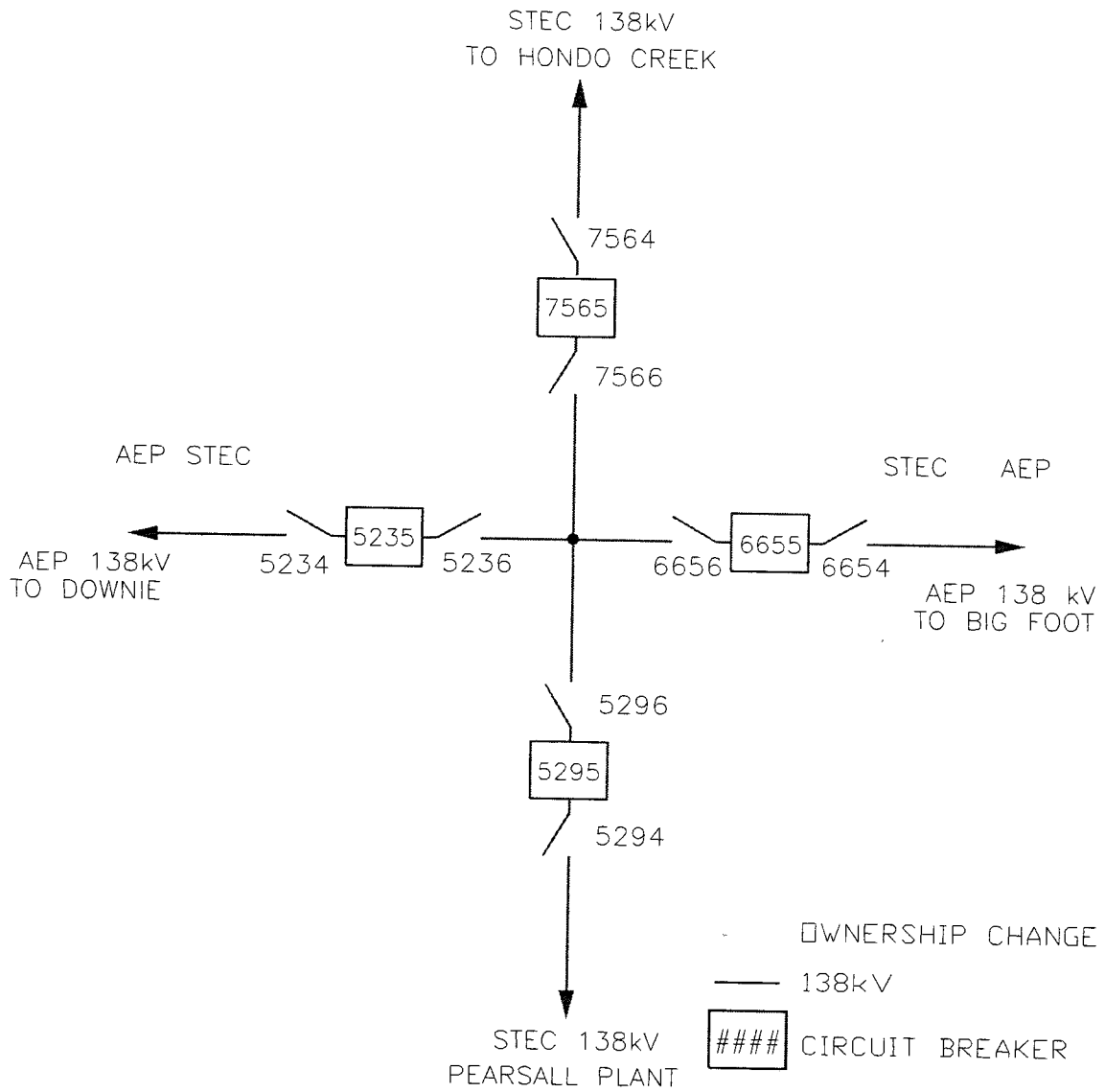
Cooperative and Company each have locks on the common gates. Both parties have access to Company's control house.



SOUTH TEXAS ELECTRIC COOPERATIVE, INC.					DWG NO. DI-1A
P.O. BOX 119			NURSERY, TEXAS 77976		FACILITY SCHEDULE 25
DILLEY 138kV STATION					
DILLEY TIE					
DWN BY JT	CKD BY	APPD BY	SCALE NA	DATE 6/08	

FACILITY SCHEDULE NO. 26

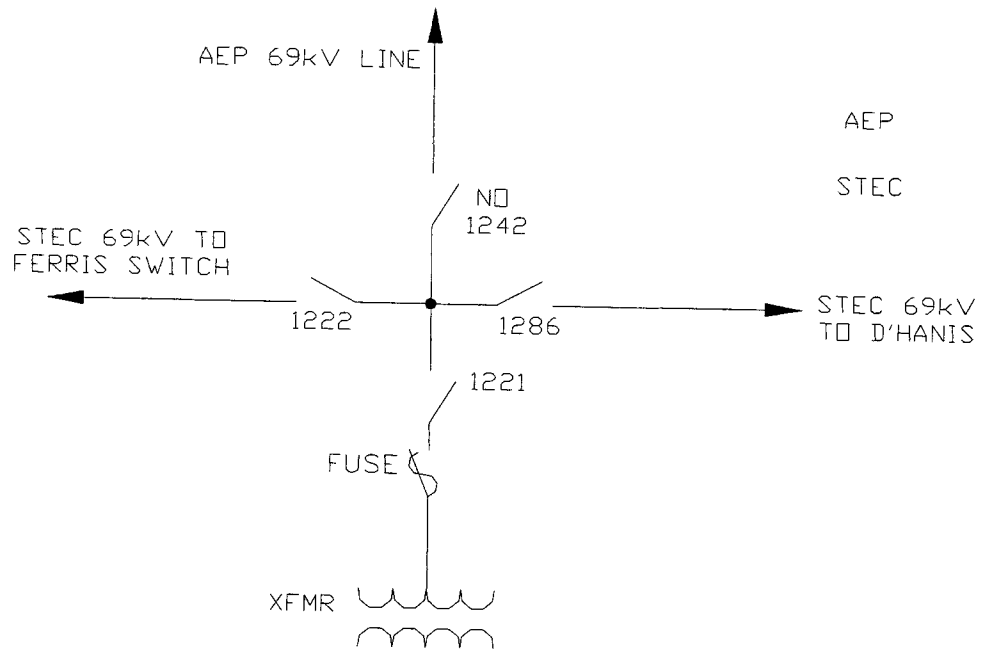
1. Name: **Moore**
2. Facility Location: Cooperative Moore 138 Station at 1020 W FM 462, Moore, Frio County
3. Delivery Voltage: 138 kV
4. Metered Voltage: 138 kV - Hondo Creek (Meter at Moore Substation)
138 kV – Pearsall (Meter at Pearsall Substation)
5. Loss Adjustment Due To Meter Location: No
6. Normal Operation of Interconnection: Closed
7. One-Line Diagram Attached: Yes
8. Description of Facilities Installed and Owned by Each Party:
Cooperative constructed and owns the switching station and the equipment therein.
9. Operational Responsibilities of Each Party:
Company operates all the oil circuit breakers via SCADA at this station. Included are:
OCB 7565 - normally closed tie to Hondo Creek
OCB 5295 - normally closed tie to Pearsall
OCB 5235 – normally closed tie to Uvalde
OCB 6655 – normally closed tie to Big Foot
10. Maintenance Responsibilities of Each Party:
Company maintains its Uvalde to Big Foot 138 kV lines and structures. Company maintains all four OCBs. Company maintains and test relays associated with OCB 6655 and OCB 5235. Company bills Cooperative for the actual cost of maintenance on the OCBs.
Cooperative maintains relays associated with breakers 7565 and 5295. Cooperative is responsible for all remaining equipment maintenance at this Point of Interconnection.
11. Other Terms and Conditions: None



SOUTH TEXAS ELECTRIC COOPERATIVE, INC.				DWC NO MR-1A	
P O BOX 119		NURSERY, TEXAS 77976			
MOORE 138kV SWITCHING STATION				FACILITY SCHEDULE 26	
MEDINA COUNTY					
MOORE TIE					
DWN BY JT	CKD BY	APPD BY	SCALE NA	DATE 6/08	

FACILITY SCHEDULE NO. 27

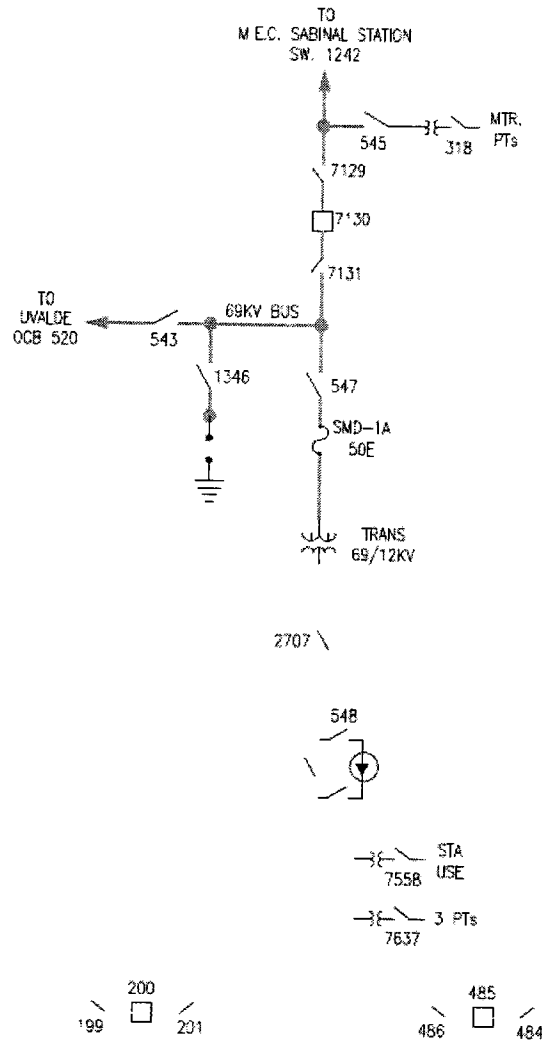
1. Name: **Sabinal**
2. Facility Location: Cooperative Sabinal Substation at 1528 FM 187, Sabinal, Uvalde County
3. Delivery Voltage: 69 kV
4. Metered Voltage: No Meter – See Other Terms and Conditions.
5. Loss Adjustment Due To Meter Location: No
6. Normal Operation of Interconnection: Open
7. One-Line Diagram Attached: Yes
8. Description of Facilities Installed and Owned by Each Party:
Company installed and owns a 69 kV line to the Cooperative's Sabinal Substation.
All equipment within Cooperative's Sabinal Substation was installed and is owned by Cooperative.
9. Operational Responsibilities of Each Party:
Both Parties may operate switch 1242 which has dual locks.
10. Maintenance Responsibilities of Each Party:
Maintenance is the responsibility of the equipment owner.
11. Other Terms and Conditions:
Company has access to Cooperative's Sabinal Substation with a lock in the entrance gate.



AEP
STECS

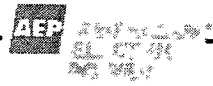
SOUTH TEXAS ELECTRIC COOPERATIVE, INC.				DWG NO. SA-1A	
P O BOX 119		NURSERY, TEXAS 77976			
STECS SABINAL SUBSTATION					
UVALDE COUNTY					
SABINAL EMERGENCY TIE					
DWN BY	JT	CKD BY	APPD BY	SCALE	DATE 6/08

GPS LOCATION:
 N29* 18.54 / W99* 27.50



TEXAS CENTRAL COMPANY

SABINAL SUB #7030 - WEST DIV.



DRFT. CAS	ENG.	APP.	DATE: 6/20/03	DWG NO. 7030S001	REV 1
-----------	------	------	---------------	------------------	-------

1. Name: **Turtle Creek**
2. Facility Location: Company's Turtle Creek Switching Station 798 FM 3292, Crystal City, Zavala County (intersection of Company's existing Uvalde-Asherton 69 kV transmission line and Cooperative's existing Crystal City Switch-West Crystal City 69 kV transmission line) 0.8 miles east of Hwy 83
3. Delivery Voltage: 69 kV
4. Metered Voltage: 69 kV
5. Loss Adjustment Due To Meter Location: None
6. Normal Operation of Interconnection: Closed
7. One-Line Diagram Attached: Yes
8. Description of Facilities Installed and Owned by Each Party:

Company will install and own the Turtle Creek 69 kV Switching Station consisting of four circuit breakers in a ring bus configuration with two adjacent terminals each for Company and Cooperative transmission lines.

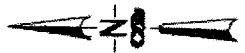
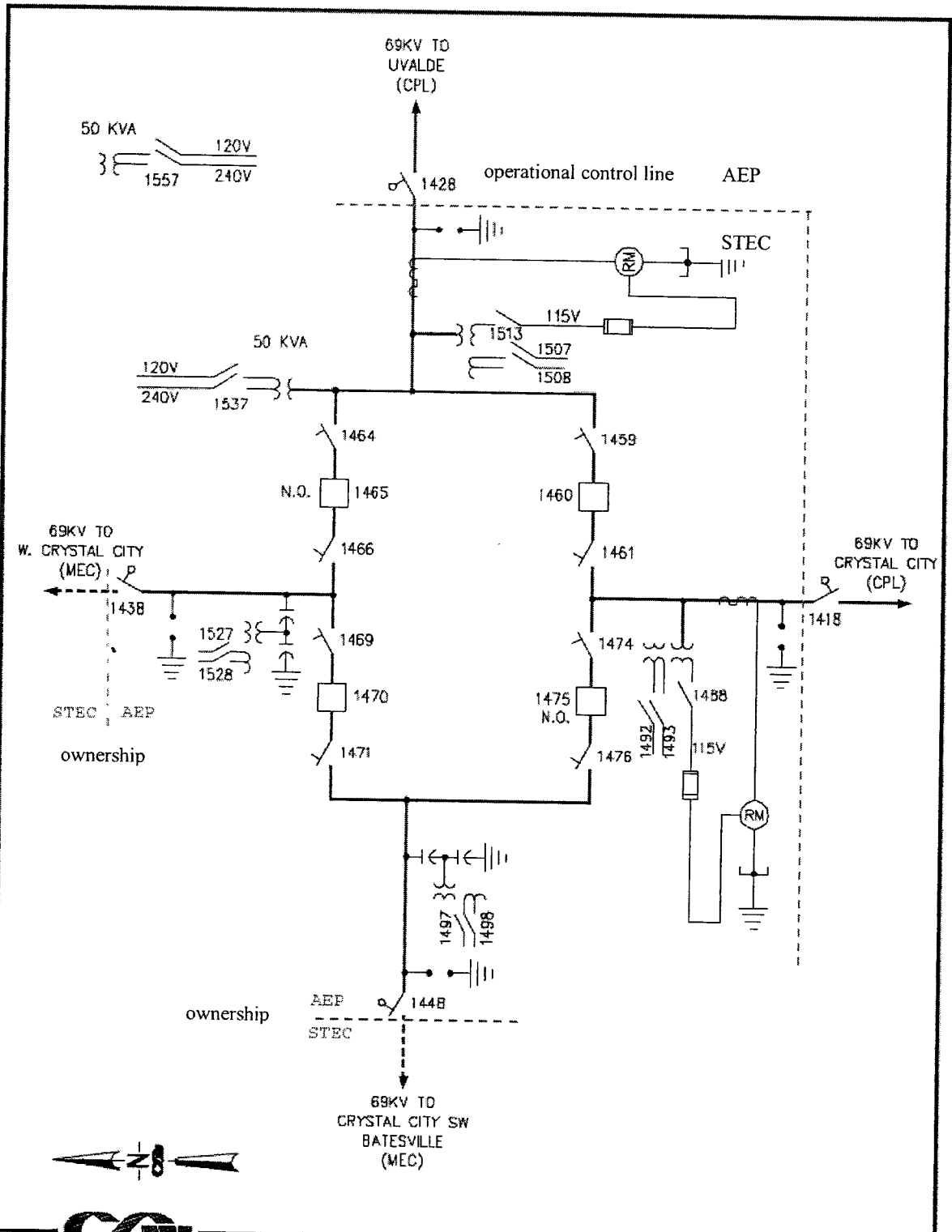
Cooperative's ownership of transmission facilities into the station ends at the point of attachment at Company's 69kV Motor-Operated Switches.

Cooperative and Company each own their respective RTUs and communication equipment in the station.
9. Operational Responsibilities of Each Party:

Cooperative operates all four transmission line circuit breakers and motor operated air switches within the Turtle Creek Switching Station.

Company operates all other facilities, including dual control of motor operated switches 1418 and 1428, within the Turtle Creek Switching Station.
10. Maintenance Responsibilities of Each Party:

Company will maintain all facilities within the Turtle Creek Switching Station, except Cooperative's RTU and communications equipment.
11. Other Terms and Conditions: None



Central and South West Services **TURTLE CREEK 69KV SWITCH STA. #7-37**

REV. 0	DR. JDN	DATE: 8/2/99	DIV. WESTERN	69KV	DWG. NO. 7037S001
--------	---------	--------------	--------------	------	-------------------