

Control Number: 35077



Item Number: 253

Addendum StartPage: 0

Project No. 35077

RECEIVED
11 SEP -8 PM 4:40
FILED COMMISSION
FILING CLERK

First Amendment to

INTERCONNECTION AGREEMENT

Between

City of Boerne

and

LCRA Transmission Services Corporation

August 26, 2011

253

**FIRST AMENDMENT TO
INTERCONNECTION AGREEMENT**

This First Amendment ("Amendment") is made and entered into this 26th day of August, 2011, between the City of Boerne ("City") and the LCRA Transmission Services Corporation ("LCRA TSC") collectively referred to hereinafter as the Parties.

WHEREAS, the LCRA TSC and the City entered into that certain Interconnect Agreement executed February 5, 2009; and

WHEREAS, the LCRA TSC installed mobile transformer connections with disconnect switches on the 12.5 kV operating and transfer buses at Boerne Substation

NOW, THEREFORE, in consideration of the mutual promises and undertakings herein set forth, the Parties agree to amend the Agreement as follows:

1. Exhibit "A" is deleted in its entirety and the Exhibit "A" attached to this First Amendment is hereby added to the Agreement in lieu thereof.
2. Facility Schedule No. 1 (including the diagrams attached thereto) is deleted in its entirety and Facility Schedule No. 1 attached to this First Amendment is hereby added to the Agreement in lieu thereof.
3. Facility Schedule No. 1 (including the diagrams attached thereto) attached to this First Amendment will become effective upon execution of this First Amendment by the Parties.

Except as otherwise expressly provided for herein, the Agreement will continue in full force and effect in accordance with its terms.

---The remainder of this page has intentionally been left blank---

IN WITNESS WHEREOF, the Parties have caused this First Amendment to be executed in several counterparts, each of which shall be deemed an original but all shall constitute one and the same instrument.

CITY OF BOERNE

By: Ronald Bowman

Name: Ronald Bowman

Title: City Manager

Date: 8/26/11

LCRA TRANSMISSION SERVICES
CORPORATION

By: Ray Pfefferkorn

Name: Ray Pfefferkorn, P.E.

Title: LCRA Transmission Engineering
Manager

Date: 6/13/11



EXHIBIT A

[illegible]

FACILITY SCHEDULE NO. 1
Amendment No. 1

- 1. Name:** Boerne Substation
- 2. Facility Location:** The Boerne Substation is located at 751 Adler St, Boerne, Kendall County, Texas 78006.
- 3. Points of Interconnection:** There are twelve (12) Points of Interconnection in the Boerne Substation generally described as:
 - where the incoming distribution line connects to the tubular bus between switches BO-21 and B0-23 at breaker BO-20.
 - where the jumper from breaker BO-20 , passing through CT-14, connects to the 4 hole pad on switch BO-19.
 - where the jumper from breaker BO-20 connects to the 4 hole pad on switch BO-21.
 - where the incoming distribution line connects to the tubular bus between switches BO-31 and B0-33 at breaker BO-30.
 - where the jumper from breaker BO-30 , passing through CT-12, connects to the 4 hole pad on switch BO-29.
 - where the jumper from breaker BO-30 connects to the 4 hole pad on switch BO-31.
 - where the incoming distribution line connects to the tubular bus between switches BO-11 and BO-13 at breaker BO-10.
 - where the jumper from breaker BO-10, passing through CT-13, connects to the 4 hole pad on switch BO-9.
 - where the jumper from breaker BO-10 connects to the 4 hole pad on switch BO-11.
 - where the incoming distribution line connects to the tubular bus between switches BO-41 and BO-43 at breaker BO-40.
 - where the jumper from breaker BO-40, passing through CT-3, connects to the 4 hole pad on switch BO-39.
 - where the jumper from breaker BO-40 connects to the 4 hole pad on switch BO-41.
- 4. Transformation Services Provided by LCRA TSC:** Yes
- 5. Metering Services Provided by LCRA TSC:** Yes
- 6. Delivery Voltage:** 12.5 kV
- 7. Metered Voltage and Location:** The metered voltage is 12.5 kV. The metering current transformers are located in each distribution bay and in T-1. The metering potential transformer is located on the 12.5 kV operating bus.
- 8. One Line Diagram Attached:** Yes

9. Description of Facilities Owned by Each Party:

City of Boerne owns:

- Four (4) distribution circuit breakers with jumpers BO-10, BO-20, BO-30, and BO-40
- Four (4) distribution circuit breaker foundations for BO-10, BO-20, BO-30, and BO-40
- Three (3) distribution circuit breaker panels in control house

LCRA TSC owns:

The Boerne Substation including, but not limited to, the following items:

- One (1) power transformer T-1 with associated surge arresters
- One (1) circuit switcher CS-5415
- Five (5) distribution and total bays including A-frames, trusses, insulators, disconnect switches and surge arresters, 12.5 kV operating and transfer bus, bus potential transformers, and metering current transformers
- Disconnect switches and mobile transformer connections on 12.5 kv operating and transfer buses
- One (1) total circuit breaker BO-100
- Under frequency relay panel
- Station Service equipment
- Control house with battery

10. Operational Responsibilities of Each Party:

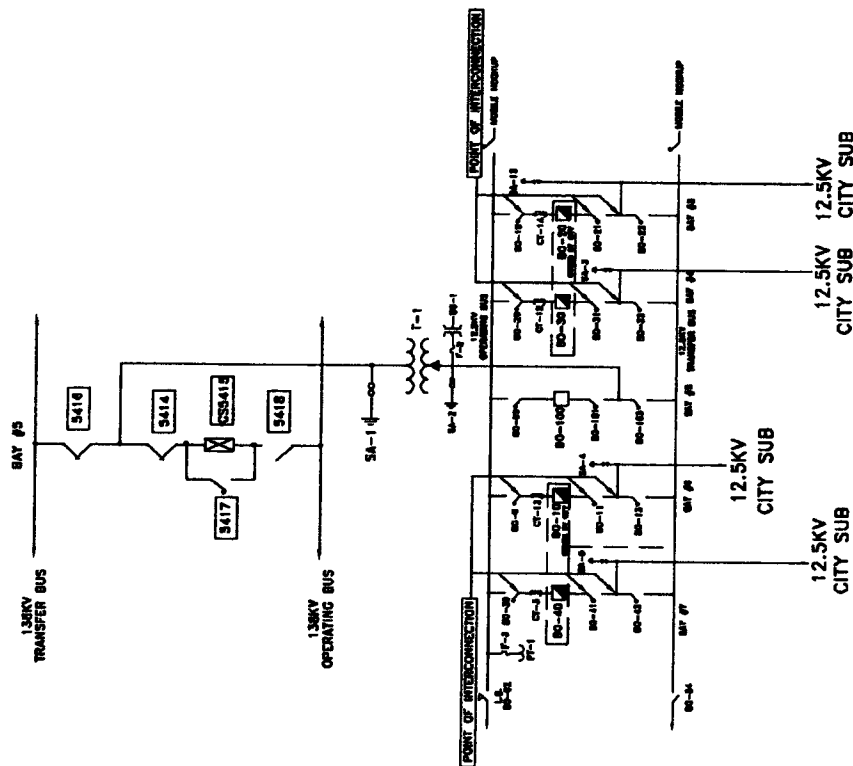
- The City will be responsible for the operation of the four (4) distribution circuit breakers serving the City feeders.
- LCRA TSC will be responsible for the operation from the low voltage total breaker through the power transformer to the high voltage equipment.

11. Maintenance Responsibilities of Each Party: Each Party will be fully responsible for the maintenance of the equipment it owns.

12. Other Terms and Conditions: The City and LCRA TSC are to share access to the substation by LCRA TSC locks in the gate and in the control house doors.

BOERNE ONE-LINE DIAGRAM

Amendment No. 1



BOERNE SUBSTATION

THIS IS NOT A COMPLETE ONE-LINE DIAGRAM

FOR A COMPLETE ONE-LINE DIAGRAM OF THIS SUBSTATION, REFER TO DWG. S106-E-0001-1.