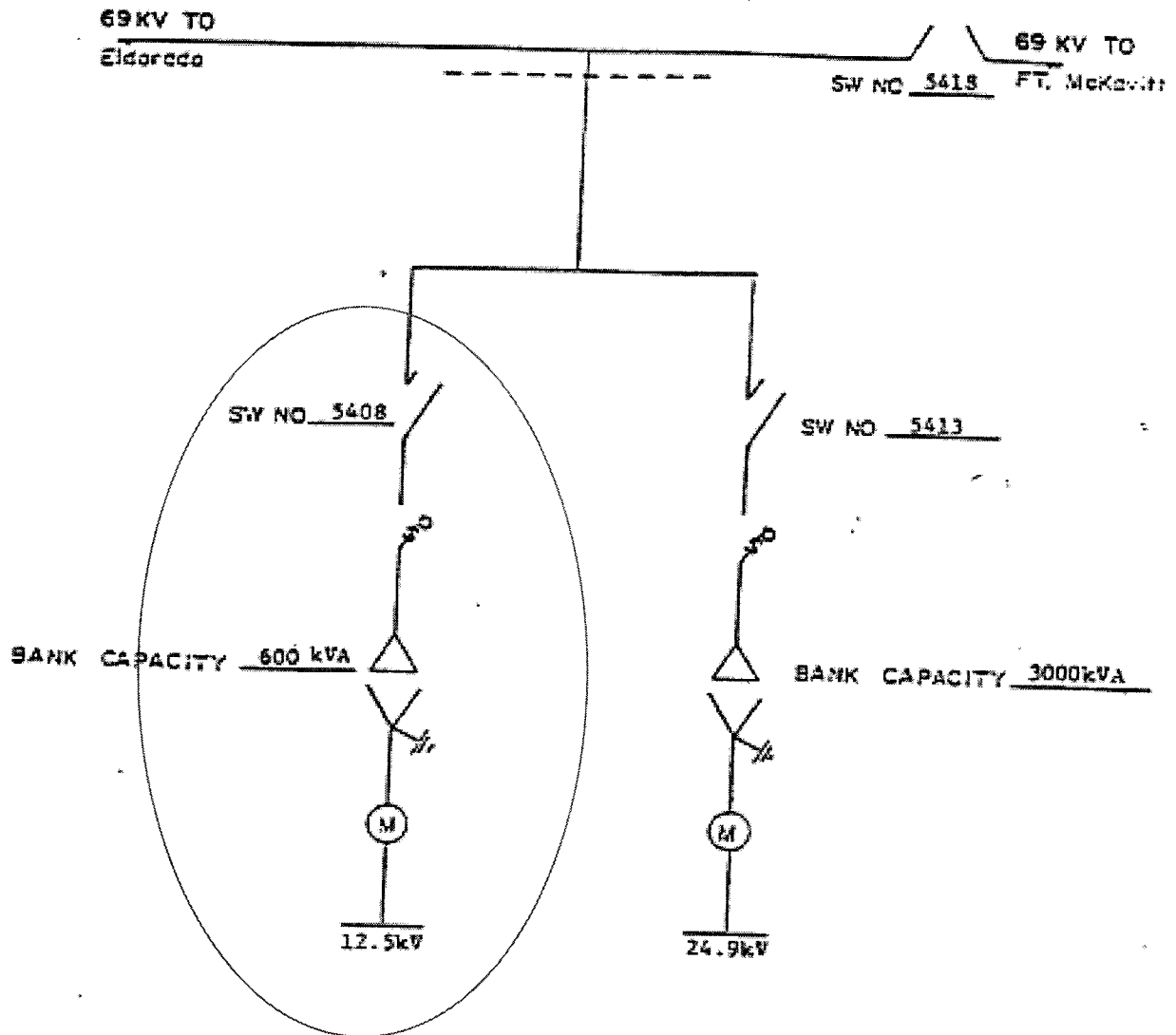


Middle Valley Substation

ONE LINE DIAGRAM FOR EXHIBIT A



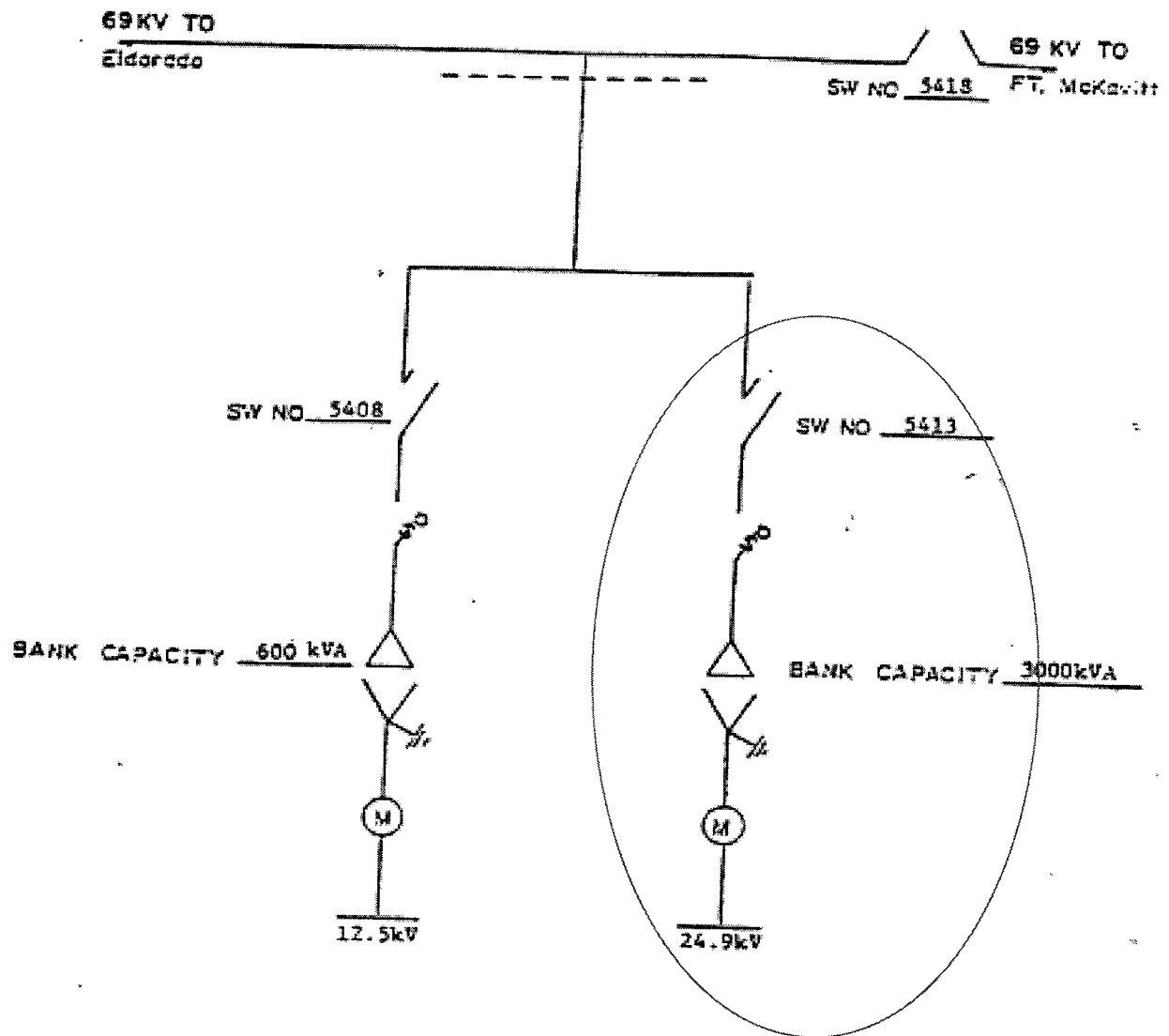
1. Dashed line indicates point of change in ownership.
2. West Texas Utilities is to have access to switches # 5408 and # 5413.

FACILITY SCHEDULE NO. 12

1. Name: **Middle Valley 24.9**
2. Facility Location: Point of Interconnection is inside Cooperative's substation on 24.9 kV side of the transformer banks
3. Voltage at Point of Interconnection: 69.0 kV
4. Metered Voltage: 24.9 kV
5. Loss Adjustment Due To Meter Location: No
6. Normal Operation of Interconnection: Closed
7. One-Line Diagram Attached: Yes
8. Description of Facilities Installed and Owned by Each Party:
9. Operation Responsibilities of Each Party:
 - Each Party operates the facilities it owns.
10. Maintenance Responsibilities of Each Party:
 - Each Party maintains the facilities it owns.
11. Maximum Contract Demand: 570 kW
12. Other Terms and Conditions:
 - Company is to have access to switch #5413
 - PT & CT sold to Cooperative

Middle Valley Substation

ONE LINE DIAGRAM FOR EXHIBIT A



1. Dashed line indicates point of change in ownership.
2. West Texas Utilities is to have access to switches # 5408 and # 5413.

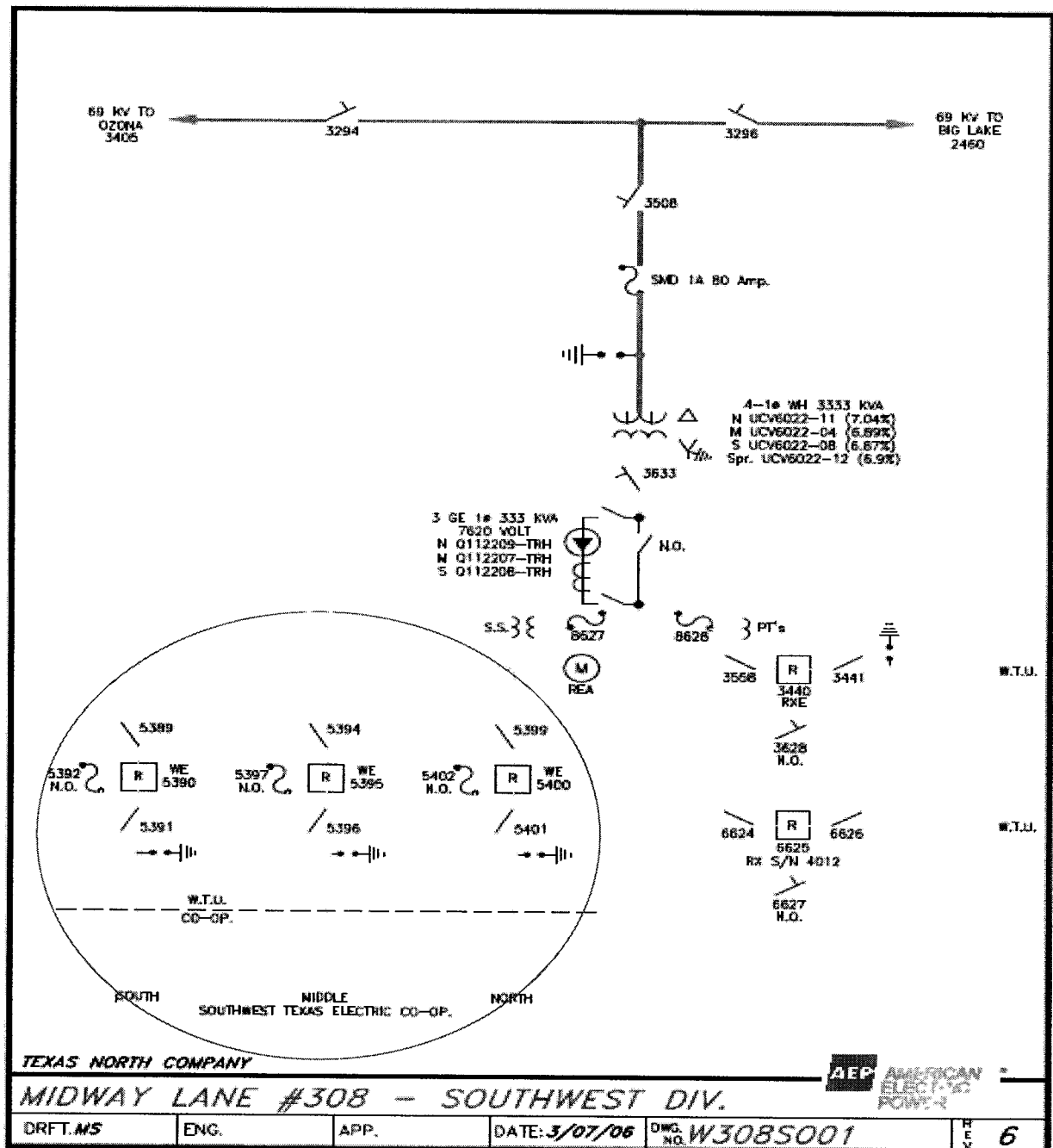
FACILITY SCHEDULE NO. 13

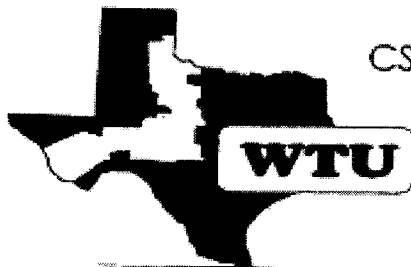
1. Name: **Midway Lane**

2. Facility Location: Point of Interconnection is inside Company Midway Lane substation south from Big Lake, TX on Highway 137, then east three (3) miles on Highway 190. Substation is one-hundred (100) yards south of Highway 190, Crockett County.

3. Voltage at Point of Interconnection: 12.5 kV
4. Metered Voltage: 12.5 kV
5. Loss Adjustment Due To Meter Location: No
6. Norman Operation of Interconnection: Closed
7. One-Line Diagram Attached: Yes
8. Description of Facilities Installed and Owned by Each Party:
9. Operation Responsibilities of Each Party:
 - See Operating Agreement for Midway Lane Cooperative Point of Delivery July 30, 1999 (AFTER ONE-LINE DIAGRAM BELOW).
10. Maintenance Responsibilities of Each Party:
 - Each Party maintains the facilities it owns.
11. Maximum Contract Demand: 5,832 kW

13. Other Terms and Conditions:
 - Cooperative is to have access to OCR 5390, 5395 and 5400 and load side disconnect switches 5391, 5396, and 5401





CSW Transmission & Distribution Operations
Dispatch Operations - WTU

Subject: Southwest Texas Electric Co-op – Midway Lane Point of Delivery Operating Procedure

OPERATING AGREEMENT FOR MIDWAY LANE SWTEC POINT OF DELIVERY
July 30, 1999 (supersedes all previous operating agreements)

SOUTH WEST TEXAS ELECTRIC COOPERATIVE

1. Southwest Texas Electric Cooperative (SWTEC) shall have access to West Texas Utilities Company's (WTU) Midway Lane Substation to operate OCR 5390, 5395, and 5400 and line side disconnects 5391, 5396, and 5401.
2. SWTEC may operate OCR 5390, 5395, and 5400 using the operator on each recloser.
3. If SWTEC closes the recloser after the recloser is locked out, WTU's Dispatch Operations Dispatcher shall be notified in a timely manner.
4. SWTEC may operate line-side disconnect switches 5391, 5396, and 5401 after obtaining switching instructions from WTU's Dispatch Operations.
5. If SWTEC takes a planned clearance on this circuit, WTU's Dispatch Operations shall be notified in advance of the clearance.
6. SWTEC shall notify WTU's Dispatch Operations of the times when a switch or recloser in the substation was operated.

WEST TEXAS UTILITIES COMPANY

1. WTU shall notify SWTEC of any planned outages or work at the Midway Lane Substation prior to the time that work is to be done.
2. WTU shall not close OCR's 5390, 5395, and 5400 to pick up load without specific instructions from SWTEC to do so.
3. WTU shall not transfer load to another recloser without first notifying SWTEC of the planned transfer.
4. WTU shall make provisions for SWTEC to access the Midway Lane Substation.

Subject: Southwest Texas Electric Co-op - Midway Lane Point of Delivery Operating Procedure

**OPERATING AGREEMENT FOR MIDWAY LANE SWTEC POINT OF DELIVERY
July 30, 1999 (supersedes all previous operating agreements)**

IN WITNESS WHEREOF, COMPANY and Customer have caused this Agreement to be executed in duplicate in their names by their respective duly authorized representatives as of the date and year first above written.

SOUTHWEST TEXAS ELECTRIC COOPERATIVE, INC.

CUSTOMER

ATTEST:

Jack Williams

By: William W. Whitten
General Manager

WEST TEXAS UTILITIES COMPANY

COMPANY

ATTEST:

Martha Murray

By: Paul H. Fenton P.E.
Director, Transmission & Distribution
Operations

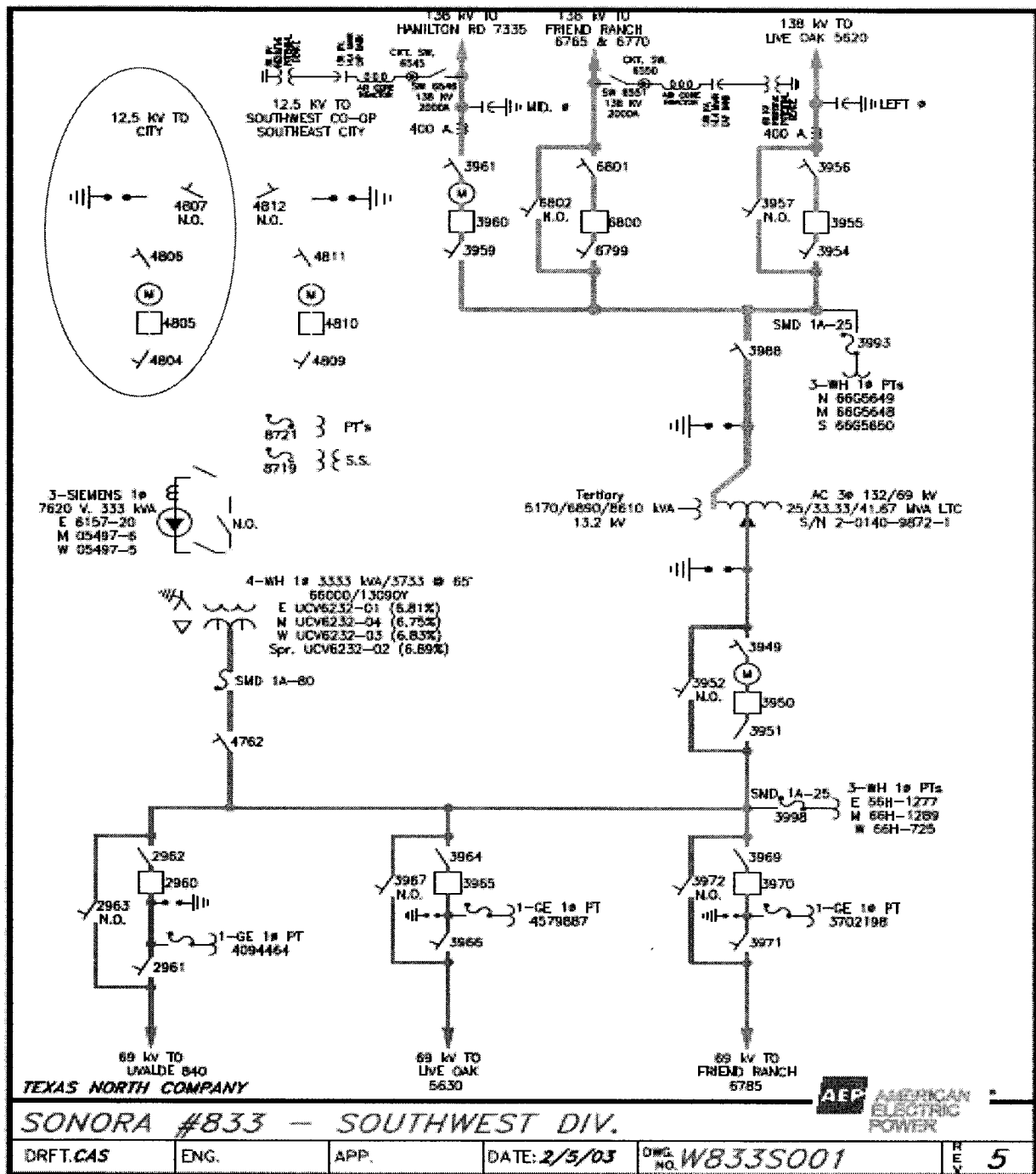
FACILITY SCHEDULE NO. 14

1. Name: **North Sonora**

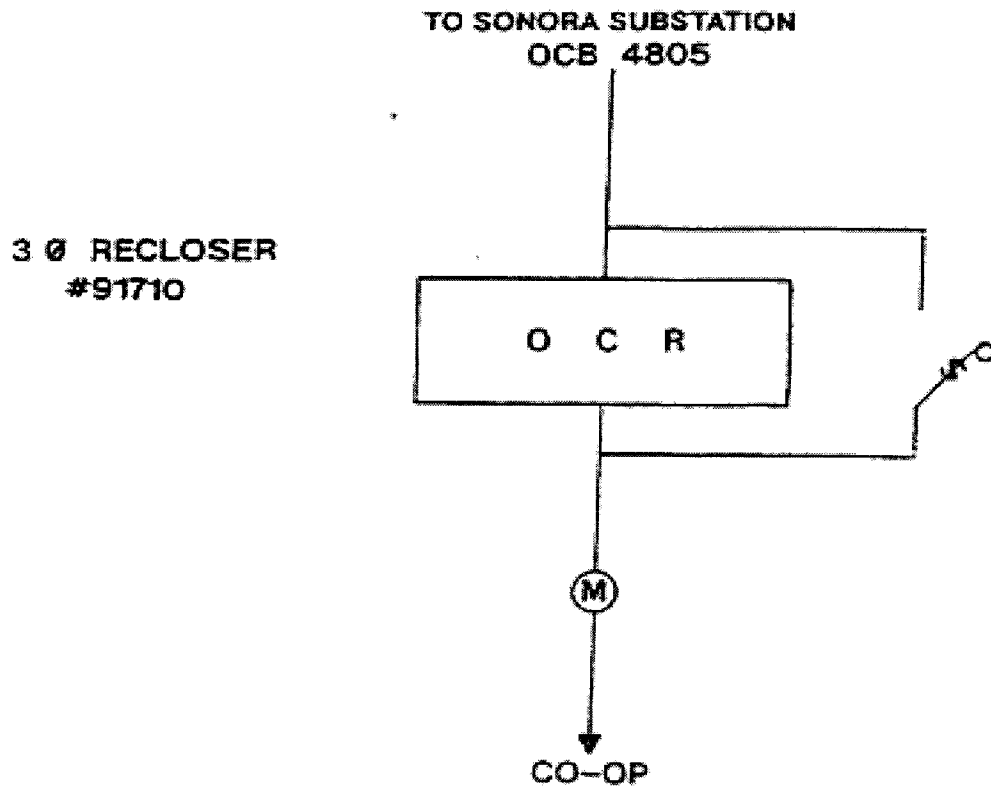
2. Facility Location: Point of Interconnection is at the north end of the Company's 12.5 kV, 3 phase power line which terminates at the Company/Cooperative - Cooperative certification boundary three and a half (3.5) mi. north of Sonora, TX, and one and a half (1.5) miles west of Highway 277 in Sutton County

3. Voltage at Point of Interconnection: 12.5 kV
4. Metered Voltage: 12.5 kV
5. Loss Adjustment Due To Meter Location: No
6. Normal Operation of Interconnection: Closed
7. One-Line Diagram Attached: Yes
8. Description of Facilities Installed and Owned by Each Party:
9. Operation Responsibilities of Each Party:
 - Each Party operates the facilities it owns.
10. Maintenance Responsibilities of Each Party:
 - Each Party maintains the facilities it owns.
11. Maximum Contract Demand: 340 kW

14. Other Terms and Conditions:
 - Cooperative is to have access to OCR #R91710



SOUTHWEST TEXAS ELECTRIC CO-OP NORTH SONORA METER POINT



1. SOUTHWEST TEXAS ELECTRIC CO-OP IS TO HAVE ACCESS TO OCR #91710
2. OCR #91710 WILL BE INSTALLED ONE SPAN SOUTH OF THE METER POINT ON A WTU POLE.

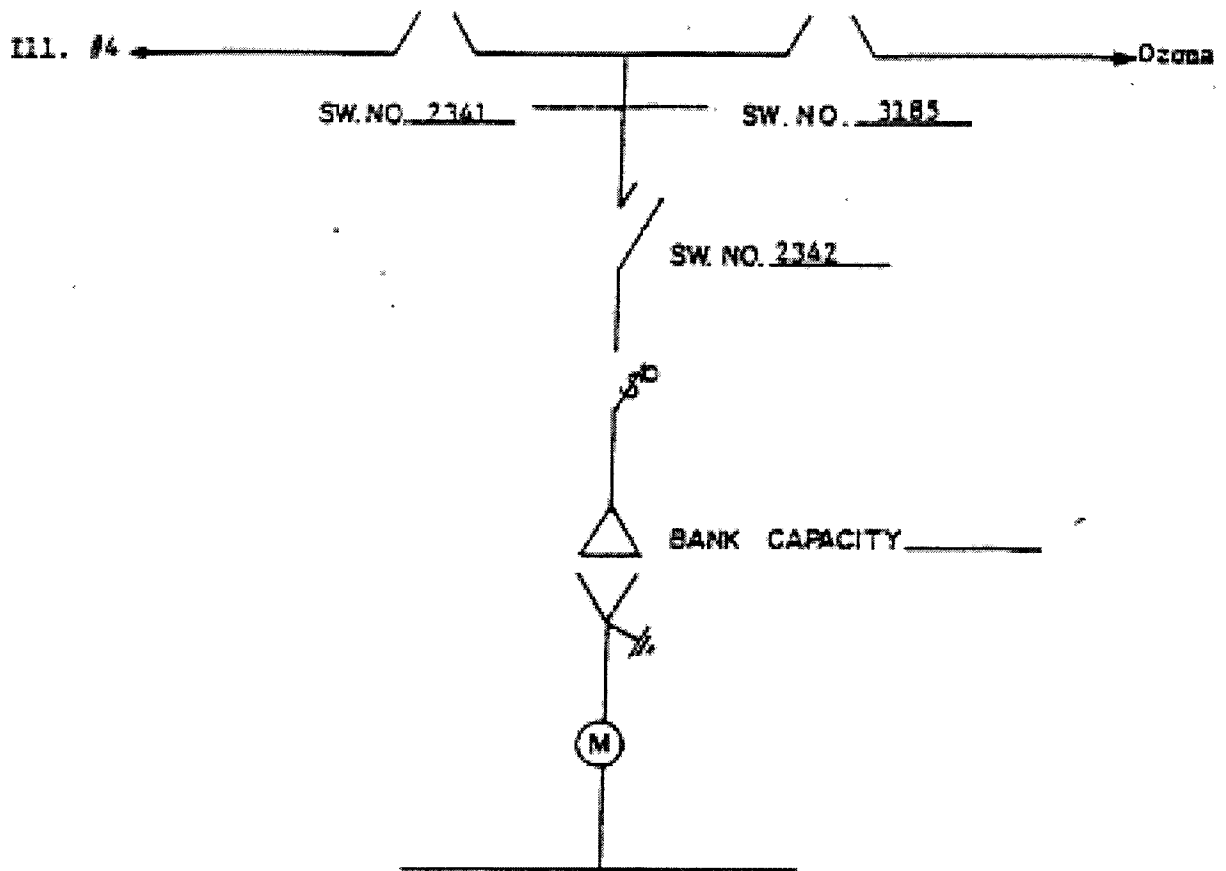
LOCATION: AT THE NORTH END OF A WEST TEXAS UTILITIES 12.5 KV, 3 PHASE POWER LINE WHICH TERMINATES AT THE WTU/SWTEC - SWTEC CERTIFICATION BOUNDARY 3 1/2 ME. NORTH OF SONORA AND 1/2 MI. WEST OF HWY 277 IN SUTTON COUNTY.

FACILITY SCHEDULE NO. 15

1. Name: **Ozona**
2. Facility Location: Point of Interconnection is in Cooperative's Ozona substation, three (3) miles west of Ozona, TX, and four-tenths (.4) mile north of Highway 10, Crockett County.
3. Voltage at Point of Interconnection: 69.0 kV
4. Metered Voltage: 12.5 kV
5. Loss Adjustment Due To Meter Location: No
6. Normal Operation of Interconnection: Closed
7. One-Line Diagram Attached: Yes
8. Description of Facilities Installed and Owned by Each Party:
9. Operation Responsibilities of Each Party:
 - Each Party operates the facilities it owns.
10. Maintenance Responsibilities of Each Party:
 - Each Party maintains the facilities it owns.
11. Maximum Contract Demand: 616 kW
12. Other Terms and Conditions:
 - Company is to have access to switch 2342
 - PT & CT sold to Cooperative

Ozona

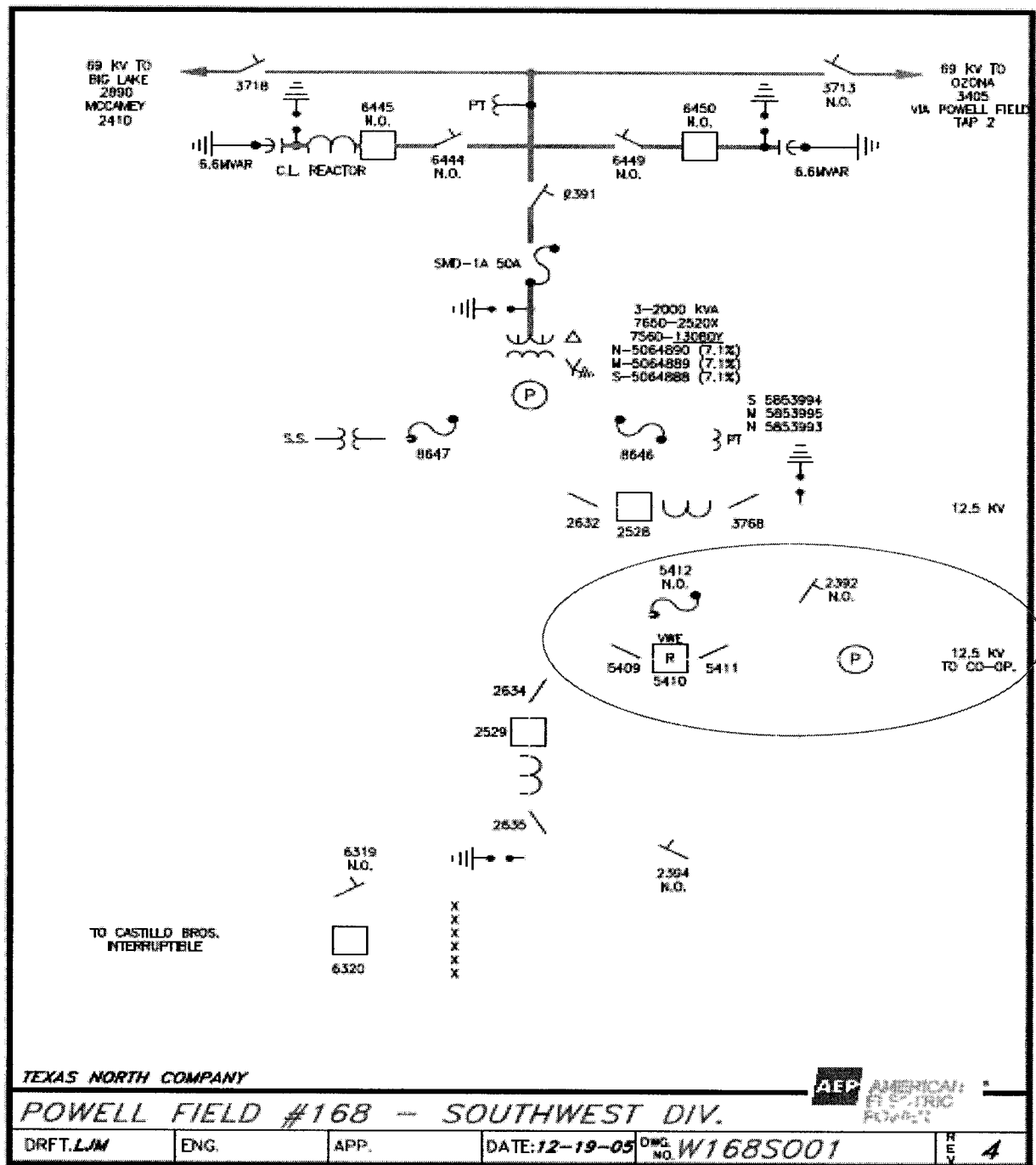
ONE LINE DIAGRAM FOR EXHIBIT A



1. West Texas Utilities Co. is to have access to bank switch #2342.
2. Dashed line indicates change of ownership.

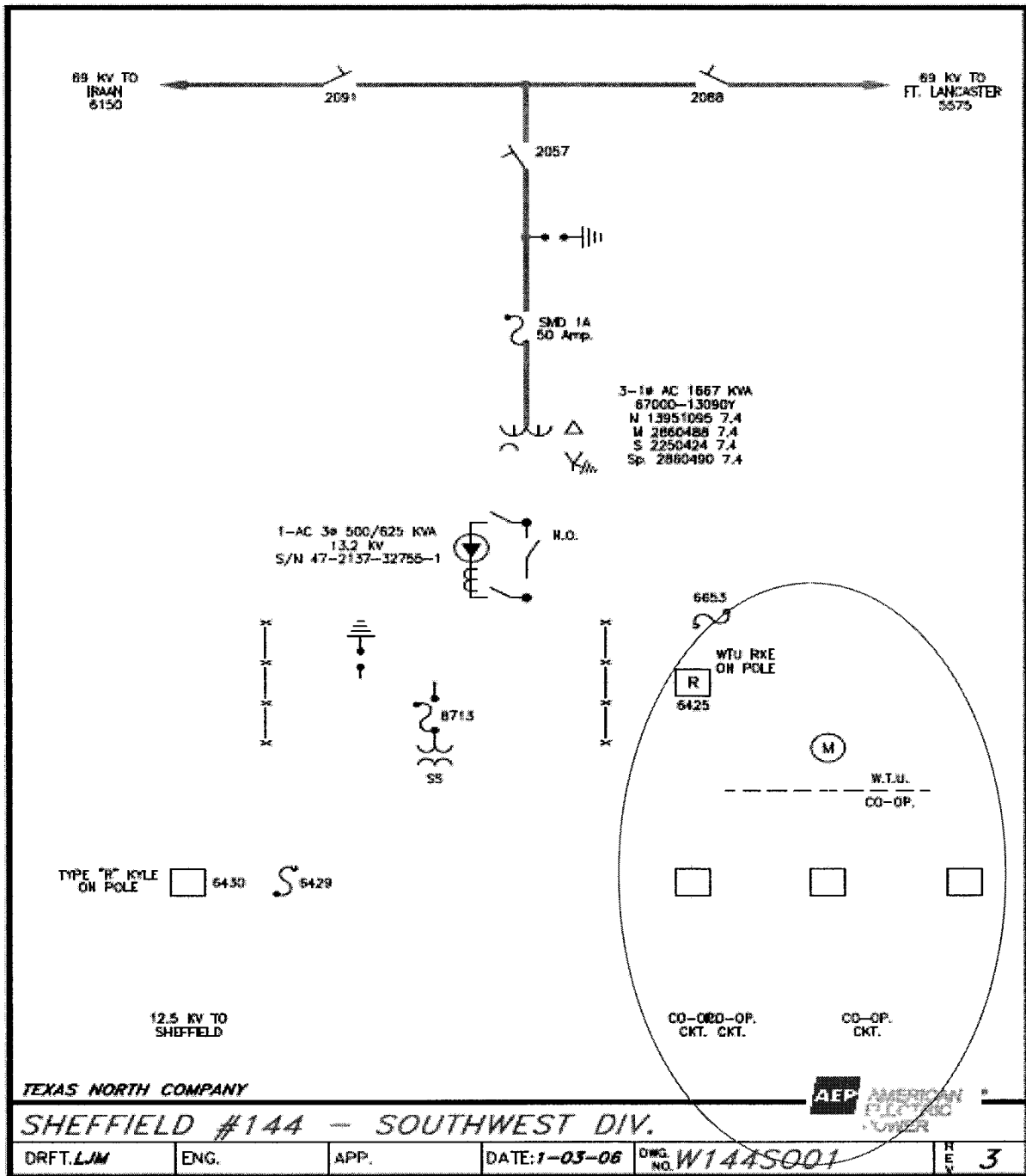
FACILITY SCHEDULE NO. 16

1. Name: **Powell Field**
2. Facility Location: Point of Interconnection is on primary meter pole approximately one hundred twenty-five (125) feet southwest of Company's Power Field substation which is located west from Big Lake, TX, for four (4) miles on US 67, then south from US 67 on Ranch 1676 Spur county road for 13 miles, Crockett County.
3. Voltage at Point of Interconnection: 12.5 kV
4. Metered Voltage: 12.5 kV
5. Loss Adjustment Due To Meter Location: No
6. Norman Operation of Interconnection: Closed
7. One-Line Diagram Attached: Yes
8. Description of Facilities Installed and Owned by Each Party:
9. Operation Responsibilities of Each Party:
 - Each Party operates the facilities it owns.
10. Maintenance Responsibilities of Each Party:
 - Each Party maintains the facilities it owns.
11. Maximum Contract Demand: 1,011 kW
12. Other Terms and Conditions:
 - Cooperative is to have access to OCR 5410 and load side disconnect switch 5411
 - Recloser 5410 is leased from Cooperative



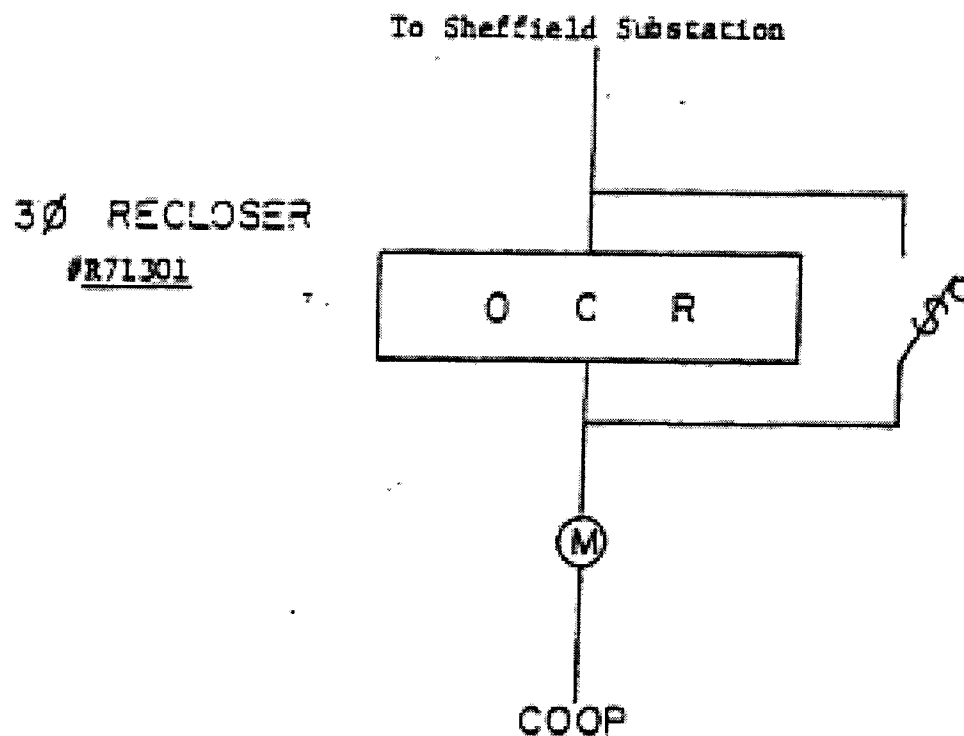
FACILITY SCHEDULE NO. 17

1. Name: **Sheffield**
2. Facility Location: Point of Interconnection is at a meter point outside Company's Sheffield substation on 12.5 kV meter pole, Pecos County.
3. Voltage at Point of Interconnection: 12.5 kV
4. Metered Voltage: 12.5 kV
5. Loss Adjustment Due To Meter Location: No
6. Normal Operation of Interconnection: Closed
7. One-Line Diagram Attached: Yes
8. Description of Facilities Installed and Owned by Each Party:
9. Operation Responsibilities of Each Party:
 - Each Party operates the facilities it owns.
10. Maintenance Responsibilities of Each Party:
 - Each Party maintains the facilities it owns.
11. Maximum Contract Demand: 2,430 kW
12. Other Terms and Conditions:
 - Cooperative is to have access to OCR R71301



SHEFFIELD SUB

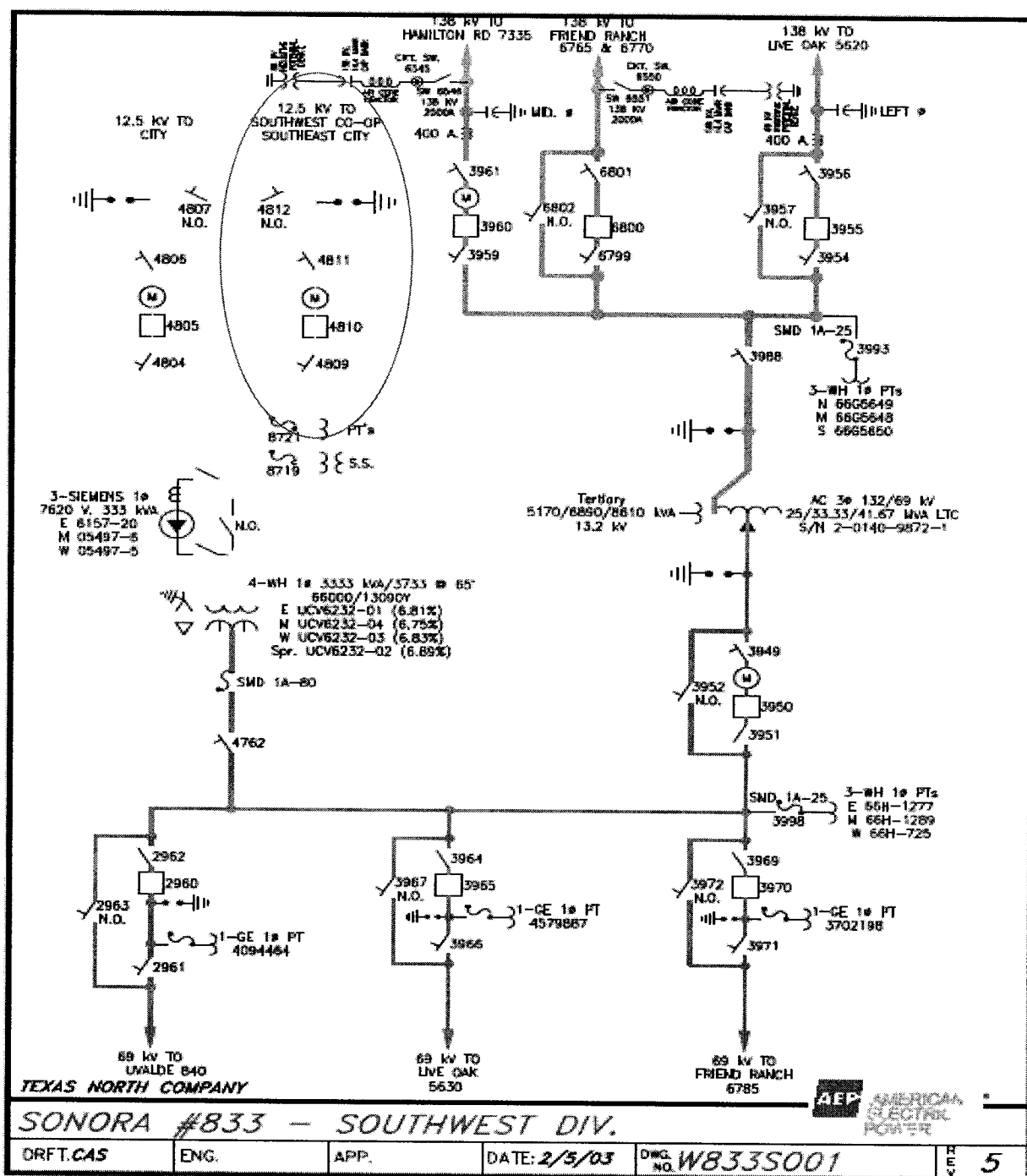
ONE LINE DIAGRAM FOR EXHIBIT A



1. Southwest Texas Electric Co-op is to have access to OCR #R7L301.
2. OCR #R7L301 is a proposed facility that will be installed at the meter point.

FACILITY SCHEDULE NO. 18

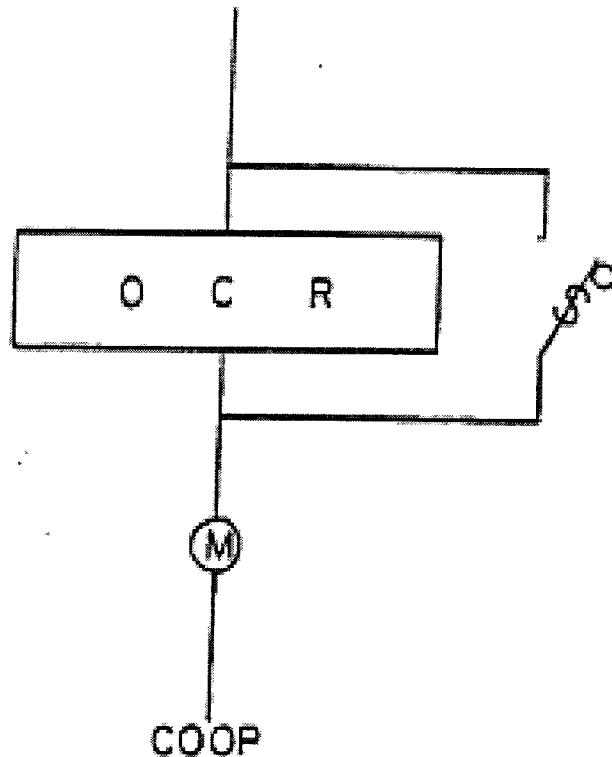
1. Name: **Sonora**
2. Facility Location: Point of Interconnection is near the south edge of Sonora, 1/4 mile off Highway 277 on the east side.
3. Voltage at Point of Interconnection: 12.5 kV
4. Metered Voltage: 12.5 kV
5. Loss Adjustment Due To Meter Location: No
6. Normal Operation of Interconnection: Closed
7. One-Line Diagram Attached: Yes
8. Description of Facilities Installed and Owned by Each Party:
9. Operation Responsibilities of Each Party:
 - Each Party operates the facilities it owns.
10. Maintenance Responsibilities of Each Party:
 - Each Party maintains the facilities it owns.
11. Maximum Contract Demand: 1,412 kW
12. Other Terms and Conditions:
 - Cooperative is to have access to OCR R91701



SONORA 138/69/12 KV

ONE LINE DIAGRAM FOR EXHIBIT A

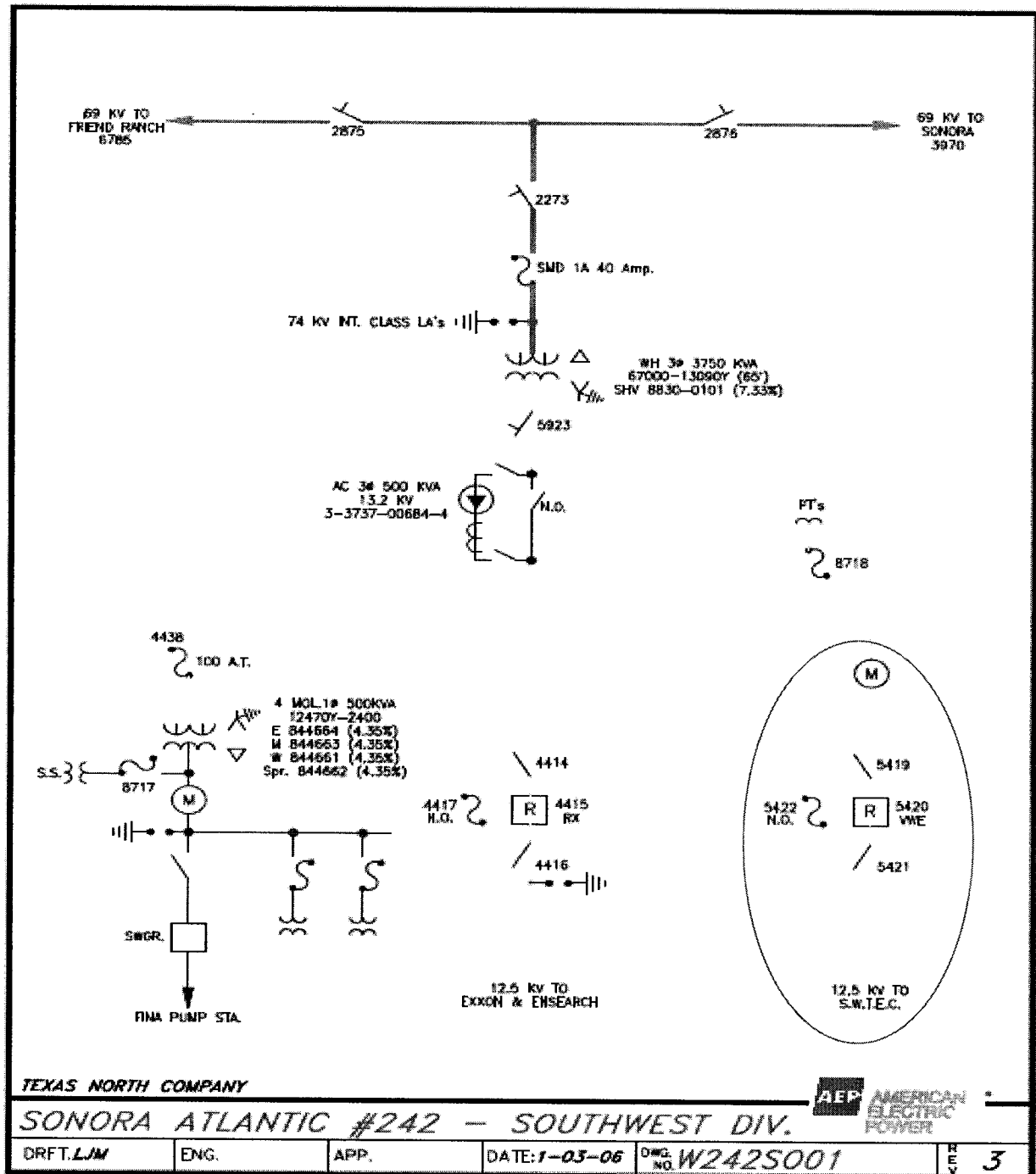
3Ø RECLOSER
#R91701



1. Southwest Texas Electric Co-op is to have access to OCR #R91701.
2. OCR #R91701 is a proposed facility that is to be installed at the meter point.

FACILITY SCHEDULE NO. 19

1. Name: **Sonora Atlantic**
2. Facility Location: Point of Interconnection is in Company's Atlantic Sonora substation, twelve (12) miles west of Sonora, TX, Sutton County, on Old Sonora to Ozona Highway 290
3. Voltage at Point of Interconnection: 12.5 kV
4. Metered Voltage: 12.5 kV
5. Loss Adjustment Due To Meter Location: No
6. Normal Operation of Interconnection: Closed
7. One-Line Diagram Attached: Yes
8. Description of Facilities Installed and Owned by Each Party:
9. Operation Responsibilities of Each Party:
 - Each Party operates the facilities it owns.
10. Maintenance Responsibilities of Each Party:
 - Each Party maintains the facilities it owns.
11. Maximum Contract Demand: 920 kW
12. Other Terms and Conditions:
 - Cooperative is to have access to OCR 5420 and load side disconnect switch 5421



TEXAS NORTH COMPANY

SONORA ATLANTIC #242 - SOUTHWEST DIV.

AEP AMERICAN ELECTRIC POWER

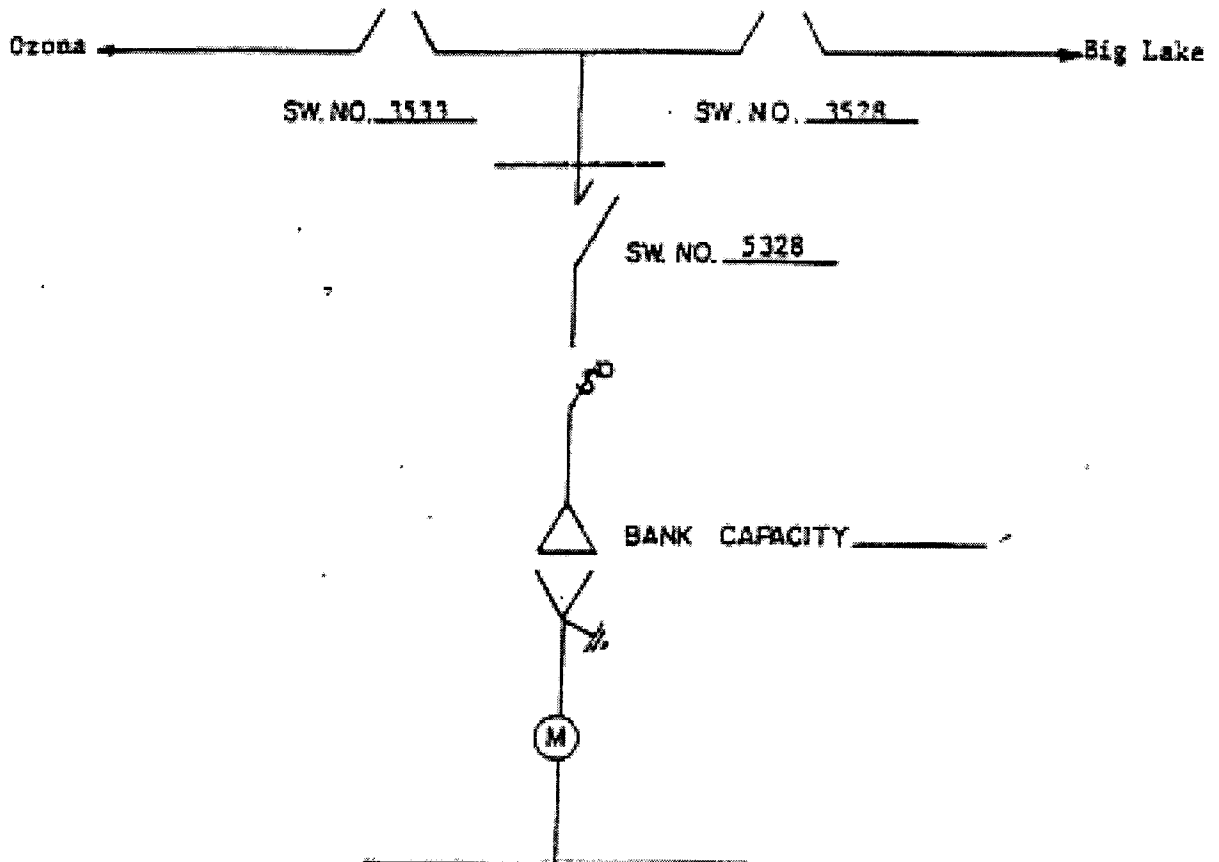
DRFT. LJM	ENG.	APP.	DATE: 1-03-06	DWG. NO. W242S001	REV. 3
-----------	------	------	---------------	-------------------	--------

FACILITY SCHEDULE NO. 20

1. Name: **Strauss Ranch**
2. Facility Location: Point of Interconnection is in Company's Atlantic Sonora substation, twelve (12) miles west of Sonora, TX, Sutton County, on Old Sonora to Ozona Highway 290
3. Voltage at Point of Interconnection: 69.0 kV
4. Metered Voltage: 12.5 kV
5. Loss Adjustment Due To Meter Location: No
6. Normal Operation of Interconnection: Closed
7. One-Line Diagram Attached: Yes
8. Description of Facilities Installed and Owned by Each Party:
9. Operation Responsibilities of Each Party:
 - Each Party operates the facilities it owns.
10. Maintenance Responsibilities of Each Party:
 - Each Party maintains the facilities it owns.
11. Maximum Contract Demand: 2,080 kW
12. Other Terms and Conditions:
 - Company is to have access to switch 5328
 - PT & CT sold to Cooperative

Strauss

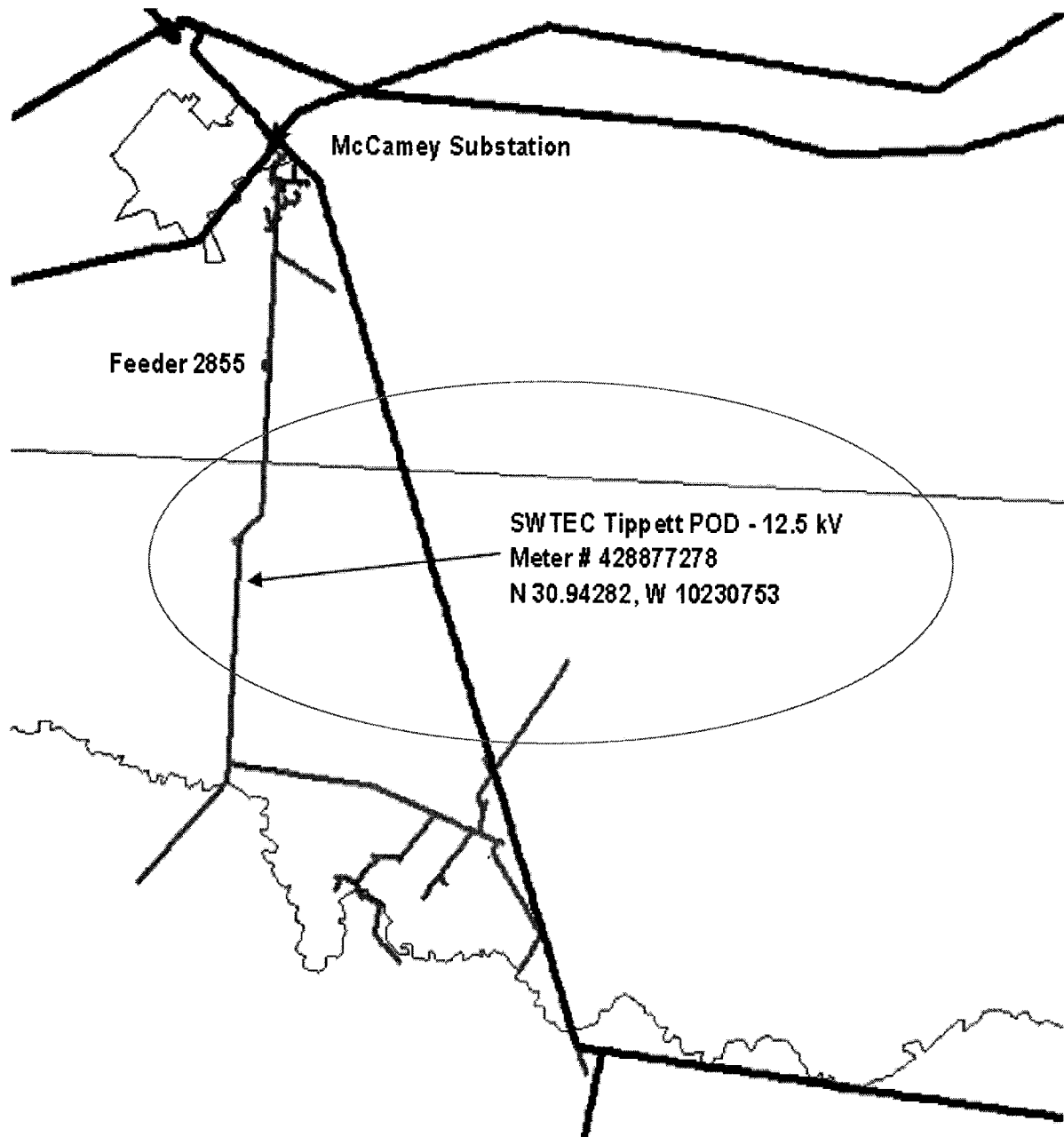
ONE LINE DIAGRAM FOR EXHIBIT A



1. WTU is to have access to bank switch #5328.
2. Dashed line indicates change of ownership.

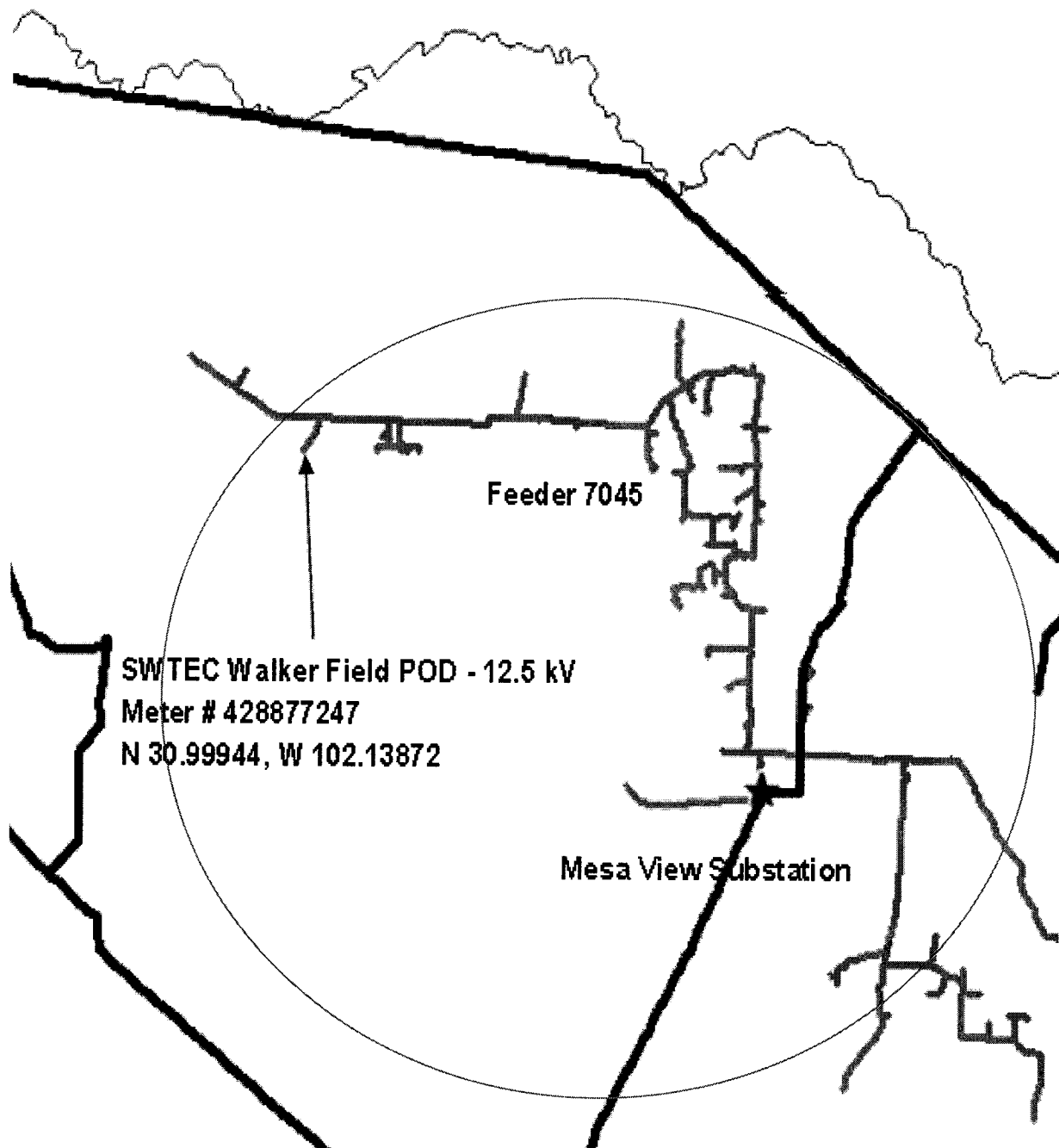
FACILITY SCHEDULE NO. 21

1. Name: **Tippett/McCamey**
2. Facility Location: Point of Interconnection is approximately ten (10) miles south of McCamey, TX, Pecos County, on Country Road 305
3. Voltage at Point of Interconnection: 12.5 kV
4. Metered Voltage: 12.5 kV
5. Loss Adjustment Due To Meter Location: No
6. Norman Operation of Interconnection: Closed
7. One-Line Diagram Attached: Yes
8. Description of Facilities Installed and Owned by Each Party:
9. Operation Responsibilities of Each Party:
 - Each Party operates the facilities it owns.
10. Maintenance Responsibilities of Each Party:
 - Each Party maintains the facilities it owns.
11. Maximum Contract Demand: 370 kW
12. Other Terms and Conditions:
 - On Primary Substation Rate



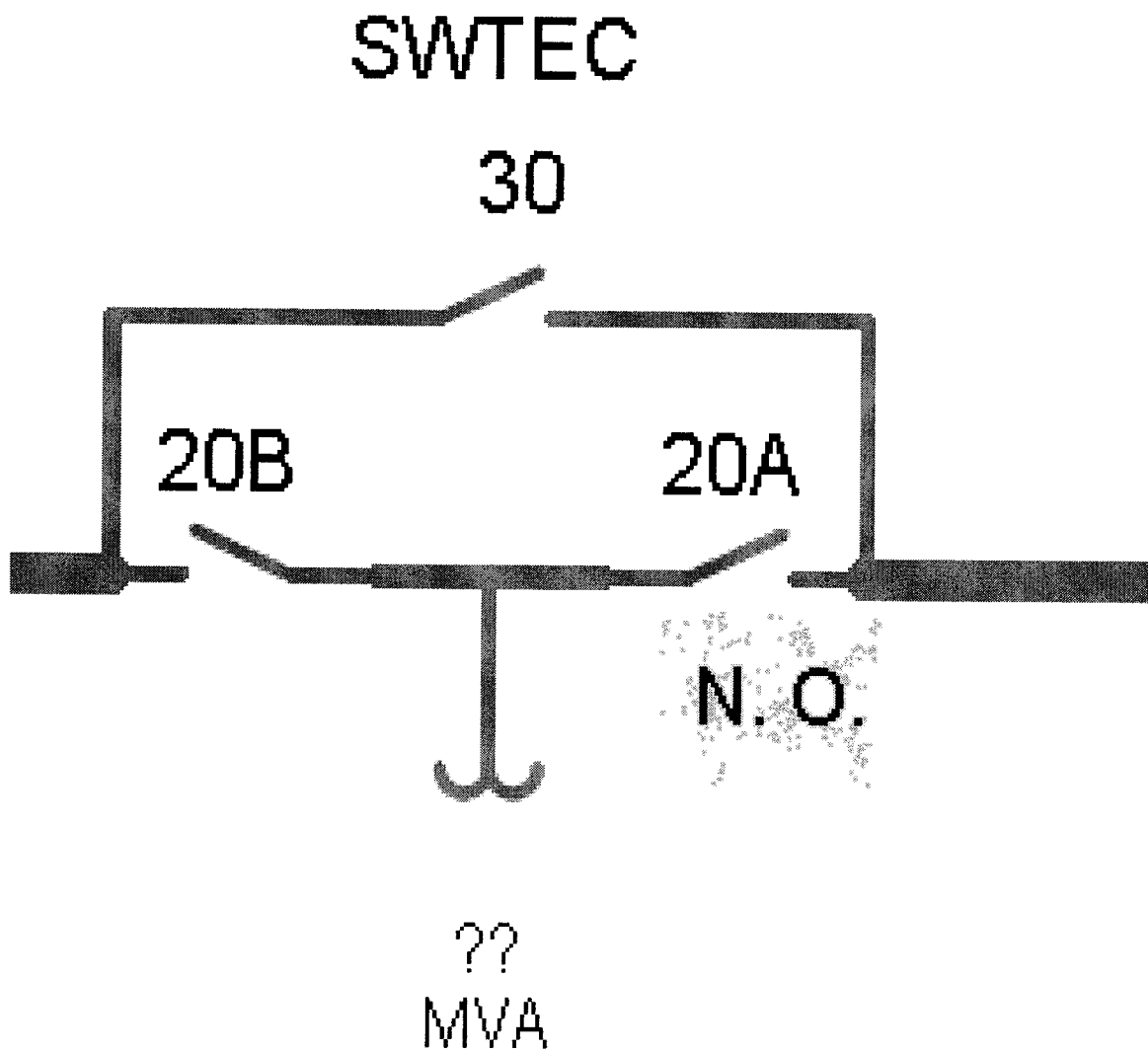
FACILITY SCHEDULE NO. 22

1. Name: **Walker Field/Mesa View**
2. Facility Location: Point of Interconnection is approximately fifteen (15) miles south of McCamey, TX, Pecos County, on Highway 305
3. Voltage at Point of Interconnection: 12.5 kV
4. Metered Voltage: 12.5 kV
5. Loss Adjustment Due To Meter Location: No
6. Norman Operation of Interconnection: Closed
7. One-Line Diagram Attached: Yes
8. Description of Facilities Installed and Owned by Each Party:
9. Operation Responsibilities of Each Party:
 - Each Party operates the facilities it owns.
10. Maintenance Responsibilities of Each Party:
 - Each Party maintains the facilities it owns.
11. Maximum Contract Demand: 158 kW
12. Other Terms and Conditions:
 - On Primary Substation Rate



FACILITY SCHEDULE NO. 23

1. Name: **White-Baker**
2. Facility Location: Point of Interconnection is in 12.5 kV bus of Cooperative's White-Baker substation located south of Interstate Highway 10, approximately seven and three tenths (7.3) mile west of Bakersfield, TX, Pecos County
3. Voltage at Point of Interconnection: 69.0 kV
4. Metered Voltage: 12.5 kV
5. Loss Adjustment Due To Meter Location: No
6. Normal Operation of Interconnection: Closed
7. One-Line Diagram Attached: Yes
8. Description of Facilities Installed and Owned by Each Party:
9. Operation Responsibilities of Each Party:
 - Each Party operates the facilities it owns.
10. Maintenance Responsibilities of Each Party:
 - Each Party maintains the facilities it owns.
11. Maximum Contract Demand: 1,853 kW
12. Other Terms and Conditions:
 - PT & CT sold to Cooperative



FACILITY SCHEDULE NO. 24

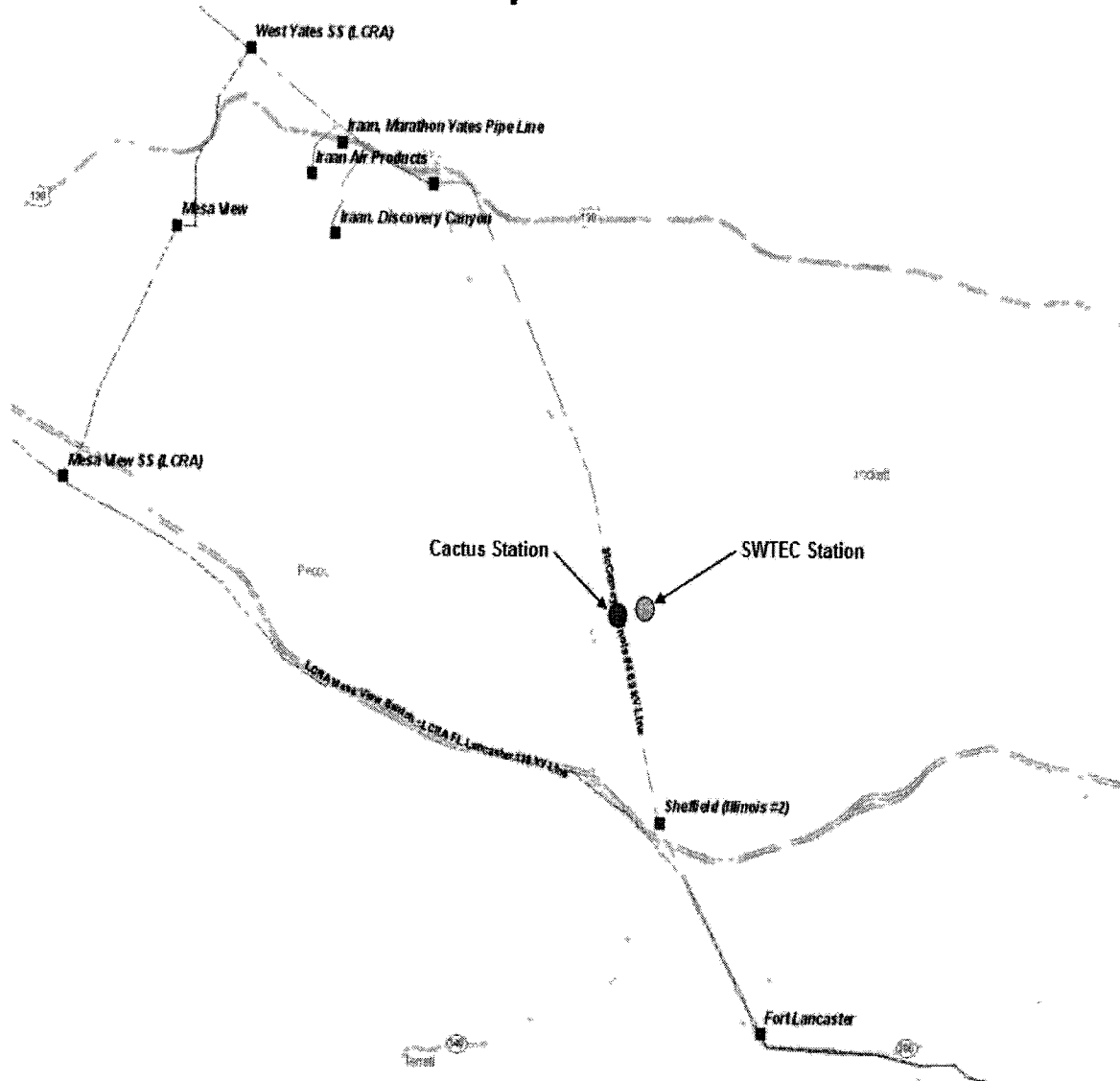
1. Name: **Pecos River**
2. Facility Location: The Pecos River substation is located approximately 8.5 miles north of Sheffield, TX, east of State Road 349, near the intersection of Deer Canyon Rd and River Rd in Sheffield, Texas in Crockett County. The Point of Interconnection is located at the dead-end structure in the Cooperatives Pecos River substation, where the jumper conductors from the Pecos River substation equipment physically contact the connectors on the Company's 69 kV transmission line conductors from the Cactus tap.
3. Voltage at Point of Interconnection: 69 kV
4. Metered Voltage 12.5 kV
5. Loss Adjustment Due To Meter Location: Yes
6. Normal Operation of Interconnection: Closed
7. One-Line Diagram Attached: Yes
8. Description of Facilities Installed and Owned by Each Party:

Company:
 - tap structure (Cactus) with three (3) switches in the Ft Lancaster to West Yates 69 kV transmission line
 - construct approximately 4300 feet of 69 kV transmission line from Cactus to Pecos River dead-end substation structure
 - meter and associated meter equipment on the load side of the Pecos River substation transformer.
Cooperative:
 - all facilities within the Pecos River substation, except Company's meter and associated meter equipment provided hereinabove
9. Operational Responsibilities of Each Party:
 - Each party will be responsible to operate the facilities it owns
10. Maintenance Responsibilities of Each Party:
 - Each Party is responsible for the maintenance of the facilities it owns
11. Other Terms and Conditions:

Cooperative recognizes that Company is installing the Facilities described hereinabove to facilitate Cooperative's request for a new Point of Interconnection to be provided by this Agreement. If Cooperative cancels its request for this Point of Interconnection prior to

energizing this Point of Interconnection because the Facilities are not required, Cooperative agrees to pay the actual installed costs incurred and committed to be incurred by Company, and the actual costs of removal of the Company material and equipment, that Company determines cannot be recovered through transmission cost of service rates. The total installed cost of the Company Facilities described hereinabove is estimated to be two million eight thousand dollars (\$2,008,000) which Cooperative agrees is reasonable. In the event Cooperative terminates this Point of Interconnection in accordance with Section 4.5, Cooperative shall pay Company the depreciated book value plus removal cost less salvage value of such facilities used to supply Cooperative, or Cooperative may purchase such facilities at depreciated book value provided Cooperative removes or otherwise disconnects such facilities from a direct connection to the Company system. << NOTE: this could change based on changes in 4.12 and 4.13 >>.

Map of Area



Approved via Settlement Agreement
Docket #ER10-2057-000