

9. Cost Responsibilities of the Parties:
  - Each Party will be fully responsible for the costs and liabilities related to the facilities it owns.
10. Other Terms and Conditions:       None



#### FACILITY SCHEDULE NO. 14

1. Name: **Paducah Clare Street**
2. Facility Location: The Paducah Clare Street Substation is located at 805 Clare St. in the City of Paducah, Cottle County, Texas. The two (2) Points of Interconnection are within the substation located at 1) the 69 kV dead-end structure that terminates the 69 kV transmission lines from the Matador substation, and 2) the 69 kV dead-end structure that terminates the 69 kV transmission lines from the Paducah City substation, where the jumper conductors from the substation equipment physically contact the connectors on the transmission lines' conductors.
3. Delivery Voltage: 69 kV
4. Normal Operation of Interconnection: Closed
5. One-Line Diagram Attached: Yes
6. Facility Ownership Responsibilities of the Parties:

ETT owns the following facilities:

  - the 69 kV transmission line from the Paducah Clare Street Substation to the Matador Substation
  - the 69 kV transmission line from the Paducah Clare Street Substation to the Paducah City Substation

AEP owns the following facilities:

  - the Paducah Clare Street Substation and all the facilities within the Substation
  - the conductors from the station equipment to the Paducah Clare Street – Matador 69 kV transmission line
  - the conductors from the station equipment to the Paducah Clare Street – Paducah City 69 kV transmission line
  - the Special Protection Scheme (SPS) equipment located on the Paducah Clare Street – Matador 69 kV transmission line
7. Operational Responsibilities of Each Party:
  - Each party controls and operates all the facilities it owns that are provided for in this Facility Schedule.
  - Per the December 21, 2007 Services Agreement between ETT and American Electric Power Service Corporation, AEP or its affiliates coordinate, direct, and perform all control center and field operation activities on the facilities owned by ETT. These activities shall include, but are not limited to, switching, clearances,

and outages for planned maintenance and operations, emergency service restoration, and overall coordination of such activities with ERCOT.

8. Maintenance Responsibilities of Each Party:
  - Each Party is responsible for maintenance of the facilities it owns that are provided for in this Facility Schedule.
9. Cost Responsibilities of the Parties:
  - Each Party will be fully responsible for the costs and liabilities related to the facilities it owns.
10. Other Terms and Conditions:       None



#### FACILITY SCHEDULE NO. 15

1. Name: **Paducah City**
2. Facility Location: The Paducah City Substation is located at 620 Backus St. in the City of Paducah, Cottle County, Texas. The Point of Interconnection is located at the dead-end structures that terminate the 69 kV transmission line from the Paducah Clare Street Substation where the jumper conductors from the substation equipment physically contact the connectors on the transmission line conductors.
3. Delivery Voltage: 69 kV
4. Normal Operation of Interconnection: Closed
5. One-Line Diagram Attached: Yes
6. Facility Ownership Responsibilities of the Parties:

ETT owns the following facilities:

  - the 69kV transmission line from the Paducah City Substation to the Paducah Clare Street Substation

AEP owns the following facilities:

  - the Paducah City Substation and all the facilities within the substation
  - the conductors from the station equipment to the Paducah City – Paducah Clare Street 69 kV transmission line
7. Operational Responsibilities of Each Party:
  - Each party controls and operates all the facilities it owns that are provided for in this Facility Schedule.
  - Per the December 21, 2007 Services Agreement between ETT and American Electric Power Service Corporation, AEP or its affiliates coordinate, direct, and perform all control center and field operation activities on the facilities owned by ETT. These activities shall include, but are not limited to, switching, clearances, and outages for planned maintenance and operations, emergency service restoration, and overall coordination of such activities with ERCOT.
8. Maintenance Responsibilities of Each Party:
  - Each Party is responsible for maintenance of the facilities it owns that are provided for in this Facility Schedule.
9. Cost Responsibilities of the Parties:

- Each Party will be fully responsible for the costs and liabilities related to the facilities it owns.

10. Other Terms and Conditions:       None





#### FACILITY SCHEDULE NO. 16

1. Name: **Rio Pecos**
2. Facility Location: The Rio Pecos Substation is located at 26250 West Hwy 67 approximately 9 miles west of the City of McCamey, Crockett County, Texas. The five (5) Points of Interconnection are within the 69 kV Rio Pecos Substation at a) the dead end structures of the 69 kV transmission line to the McCamey substation, b) the dead end structures of the 69 kV transmission line to the Sun Valley substation, c) at the two (2) low side switches of the 138/69 kV autotransformers, and d) the 69 kV bushings of the distribution transformer in the Rio Pecos Substation
3. Delivery Voltage: 69 kV
4. Normal Operation of Interconnection: Closed
5. One-Line Diagram Attached: Yes
6. Facility Ownership Responsibilities of the Parties:

ETT owns the following facilities:

- all 69 kV transmission facilities and equipment within the Rio Pecos Substation other than Telecommunication Facilities and the stand-alone CTs on the 69kV side of the autotransformers
- the -50/+40 MVAR static VAR compensator, including the fencing surrounding it and grounding within the fence
- a dead end structure reserved for future 69 kV use
- 69 kV control house #2 structure and Shared Facilities therein, including batteries and associated protection, control, and metering equipment
- the Static VAR Compensator RTU
- the ERCOT Polled Settlement meter RTU

AEP owns the following facilities:

- the substation property, including perimeter fencing, as well as the 138 kV control house #1 structure
- 138 kV control house #1 structure and Shared Facilities therein
- all 138 kV transmission facilities and equipment within the Rio Pecos Substation including the autotransformers and all facilities and equipment functioning exclusively as protective, metering, or control devices
- all Distribution Facilities within the Rio Pecos Substation including the distribution transformer and all facilities and equipment functioning exclusively

- as protective, metering, or control devices for, or in support of the operation or maintenance of Distribution Facilities (other than circuit switcher 5818)
- all Telecommunication Facilities and the stand-alone CTs on the 69kV side of the autotransformers within the Rio Pecos Substation unless specifically described above as owned by ETT
  - the MAS point to point telecommunication equipment within the Rio Pecos Substation
  - the station RTU
  - the transmission sag monitoring RTU
7. Operational Responsibilities of Each Party:
- Each party controls and operates all the facilities it owns that are provided for in this Facility Schedule.
  - Per the December 21, 2007 Services Agreement between ETT and American Electric Power Service Corporation, AEP or its affiliates coordinate, direct, and perform all control center and field operation activities on the facilities owned by ETT. These activities shall include, but are not limited to, switching, clearances, and outages for planned maintenance and operations, emergency service restoration, and overall coordination of such activities with ERCOT.
8. Maintenance Responsibilities of Each Party:
- Each Party is responsible for maintenance of the facilities it owns that are provided for in this Facility Schedule.
9. Cost Responsibilities of the Parties:
- Each Party will be fully responsible for the costs and liabilities related to the facilities it owns.
10. Other Terms and Conditions:           None



#### FACILITY SCHEDULE NO. 17

1. Name: **Big Lake PST**
2. Facility Location: The Big Lake Substation is located at 505 S. Main Ave. in the City of Big Lake, Reagan County, Texas. The two (2) Points of Interconnection are within the Big Lake Substation at 1) the top of the west face of the northwest 138 kV box bay (TLBM dead end assembly), and 2) the dead end structures of the North McCamey 69 kV transmission line at the southeast end of the Big Lake Substation.
3. Delivery Voltage: 138 kV
4. Normal Operation of Interconnection: Closed
5. One-Line Diagram Attached: Yes
6. Facility Ownership Responsibilities of the Parties:

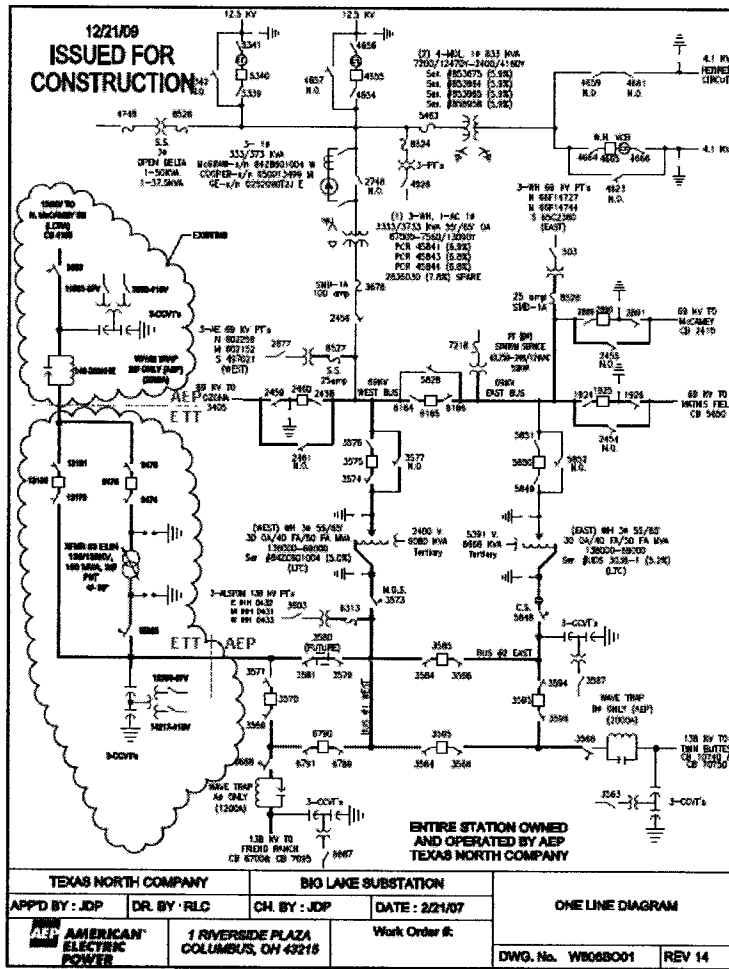
ETT owns the following facilities:

- switches 15923 (MOS), 9474, 9476, 13181 and 13179
- breakers 9475, 13180
- 150 MVA phase shifting transformer ("PST") including arrestors
- all protective, metering, or control facilities and equipment functioning exclusively as protective, metering, or control devices for, or in support of the operation or maintenance of the transmission facilities specifically described above as owned by ETT
- bus work and support structures and equipment (including grounding) associated with the facilities described above
- PST RTU

AEP owns the following facilities:

- all Telecommunication Facilities within the Big Lake Substation other than specific facilities described above as owned by ETT
- all Distribution Facilities and transmission facilities and equipment within the Big Lake Substation (unless specifically described above as owned by ETT), including the distribution and transmission transformers and all facilities and equipment functioning exclusively as protective, metering, or control devices for, or in support of the operation or maintenance of the Distribution Facilities and transmission facilities and equipment
- control house structure and Shared Facilities therein
- station RTU
- 138 kV transmission line to the N. McCamey Substation

7. Operational Responsibilities of Each Party:
  - Each party controls and operates all the facilities it owns that are provided for in this Facility Schedule.
  - Per the December 21, 2007 Services Agreement between ETT and American Electric Power Service Corporation, AEP or its affiliates coordinate, direct, and perform all control center and field operation activities on the facilities owned by ETT. These activities shall include, but are not limited to, switching, clearances, and outages for planned maintenance and operations, emergency service restoration, and overall coordination of such activities with ERCOT.
8. Maintenance Responsibilities of Each Party:
  - Each Party is responsible for maintenance of the facilities it owns that are provided for in this Facility Schedule.
9. Cost Responsibilities of the Parties:
  - Each Party will be fully responsible for the costs and liabilities related to the facilities it owns.
10. Other Terms and Conditions:           None



4/18/16/07/11 12/21/09 2:00:22 PM

### FACILITY SCHEDULE NO. 18

1. Name: **Tombstone**
2. Facility Location: The Tombstone Switching Station is located in the Rio Pecos to Fort Stockton 138 kV transmission line approximately 14 miles northeast of Fort Stockton, Texas in Pecos County, near 31° 0' 9.4"N, 102° 40' 45.0"W. There are two Points of Interconnection at this location at the "box bay" transmission structure steel where the conductors from the 138 kV transmission lines from the Rio Pecos and Fort Stockton substations connect to the conductors from the motor operated line disconnect switches in the station.
3. Delivery Voltage: 138 kV
4. Normal Operation of Interconnection: Closed
5. One-Line Diagram Attached: Yes
6. Facility Ownership Responsibilities of the Parties:

ETT owns the following facilities:

- the Tombstone Switching Station, including the facilities listed below and excluding all facilities\* owned by Texas New Mexico Power Company
  - fencing, station cover stone and grounding grid
  - a tubular "box bay" transmission structure in the existing Rio Pecos to Fort Stockton 138 kV transmission line
  - two (2) motor operated switches (#11817 and #6423) in the Rio Pecos to Fort Stockton 138 kV transmission line, one on each side of the tap
  - one (1) motor operated switch (#13457) to disconnect the 138 kV transmission line from the Substation
  - one (1) meter panel connected in series with TNMP's meter instrument transformers
  - one (1) remote terminal unit ("ETT RTU") and associated communication equipment for exclusive supervisory control of the motor operated switches
  - a RTU communication circuit from the Station to the ETT control center including a telephone demark located outside the Station fence
  - CCVTs and associated equipment
  - station service PT and associated equipment

\* Note: Texas New Mexico Power Company owns the following facilities within the Tombstone Switching Station:

- one (1) – set of 138 kV revenue quality meter instrument transformers

- one (1) meter panel containing primary and backup revenue meters
- one (1) remote terminal unit and associated communication equipment
- one (1) radio and associated communication equipment
- one (1) 55 foot wood pole with radio antenna and associated cabling and hardware

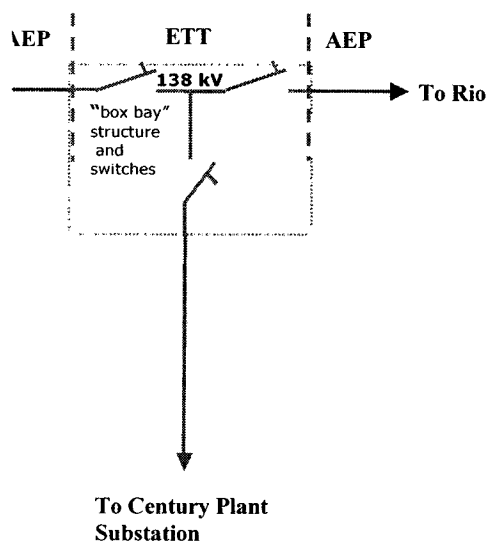
AEP owns the following facilities:

- the Tombstone to Rio Pecos 138 kV transmission line
- the Tombstone to Fort Stockton 138 kV transmission line

7. Operational Responsibilities of Each Party:
  - Each party controls and operates all the facilities it owns that are provided for in this Facility Schedule.
  - Per the December 21, 2007 Services Agreement between ETT and American Electric Power Service Corporation, AEP or its affiliates coordinate, direct, and perform all control center and field operation activities on the facilities owned by ETT. These activities shall include, but are not limited to, switching, clearances, and outages for planned maintenance and operations, emergency service restoration, and overall coordination of such activities with ERCOT.
8. Maintenance Responsibilities of Each Party:
  - Each Party is responsible for maintenance of the facilities it owns that are provided for in this Facility Schedule.
9. Cost Responsibilities of the Parties:
  - Each Party will be fully responsible for the costs and liabilities related to the facilities it owns.
10. Other Terms and Conditions:           None



# Tombstone Switching Station



## Texas North Company Facilities

facilities

USA  
ties

### FACILITY SCHEDULE NO. 19

1. Name: **Yellow Jacket**
2. Facility Location: The Yellow Jacket Substation is located in the City of Menard, Menard County, Texas approximately 1 mile north of the Menard Substation. The five Points of Interconnection are at i) the dead-end structures that terminate the 138 kV transmission lines from the Fort Mason Substation and San Angelo Power Station, the 69 kV transmission lines from the Eden Substation, Mason Switching Station and Junction Substation where the jumper conductors from the substation equipment physically contact the connectors on the transmission lines' conductors and at ii) the 69 kV bushings of the distribution transformer in the Yellow Jacket Substation.
3. Delivery Voltage: 69 kV & 138 kV
4. Normal Operation of Interconnection: Closed
5. One-Line Diagram Attached: Yes
6. Facility Ownership Responsibilities of the Parties:

ETT owns the following facilities unless expressly described as footprint facilities below:

  - all transmission facilities other than Telecommunication Facilities in the 138kV Yellow Jacket Substation and the 69kV Yellow Jacket Substation between and including the substation dead-end structures to which are attached i) the 138kV transmission lines to the LCRA Fort Mason Substation and San Angelo Power Station, ii) the 69kV transmission lines to the Eden Substation, Mason Switching Station and Junction Substation via the Menard Phillips Substation and iii) the 69kV bushings of the distribution transformer in the Yellow Jacket Substation (which bushings are owned by AEP)
  - the substation property, including perimeter fencing, as well as the control house structure within the Yellow Jacket Substation
  - one (1) RTU for the phase shift transformer
  - all protective, metering, or control facilities and equipment in the Yellow Jacket Substation not functioning exclusively as protective, metering, or control devices for, or in support of the operation or maintenance of Distribution Facilities

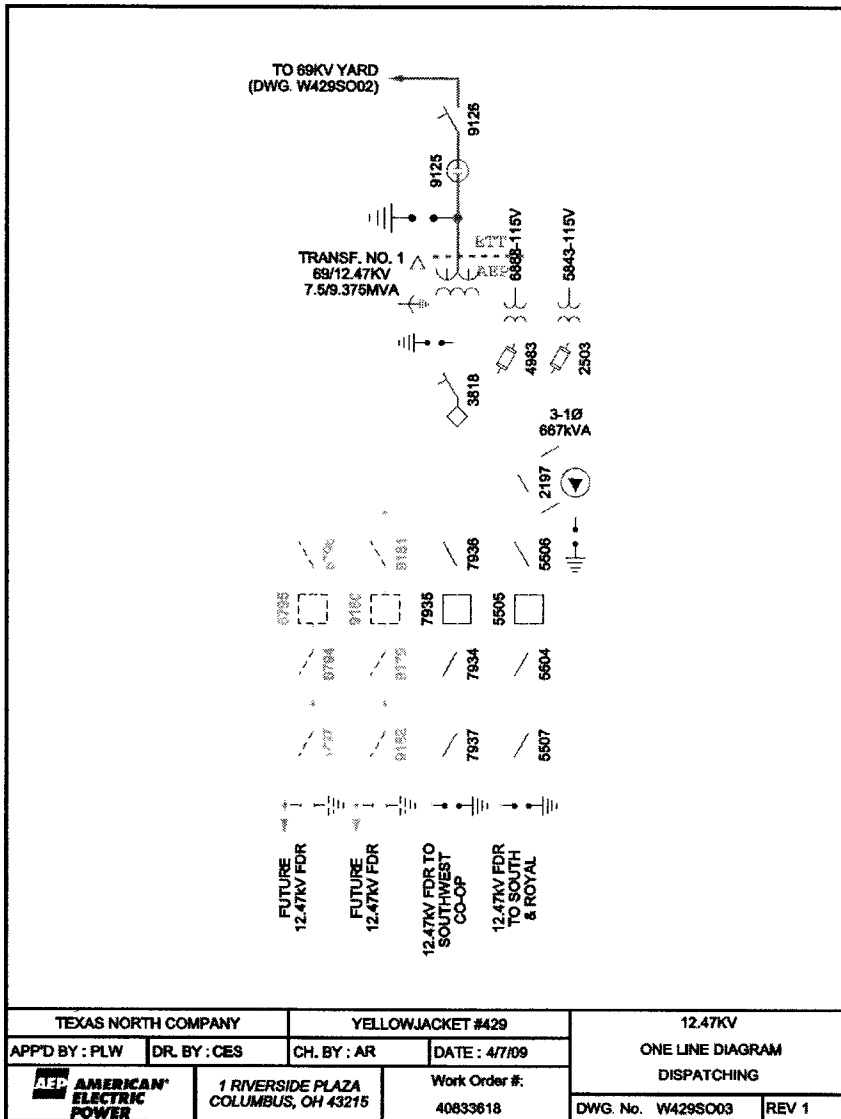
AEP owns the following facilities:

  - the 138kV transmission line from the Yellow Jacket Substation to the San Angelo Power Station
  - the 138kV transmission line from the Yellow Jacket Substation to the Fort Mason Substation

- the 69kV transmission line from the Yellow Jacket Substation to the Eden Substation
  - the 69kV transmission line from the Yellow Jacket Substation to the Mason Substation
  - the 69kV transmission line from the Yellow Jacket Substation to the Junction Substation via the Menard Phillips Substation
  - all Distribution Facilities including all metering, or control facilities and equipment in the Yellow Jacket Substation functioning exclusively as protective, metering, or control devices for, or in support of the operation or maintenance of Distribution Facilities (other than circuit switcher 9125)
  - one (1) station RTU
  - one (1) wireless remote communication device
  - protection and control equipment for AEP facilities
  - the following footprint facilities within the ground grid boundary of the Yellow Jacket Substation:
    - station service transformer if energized by Distribution Facilities
    - instrument transformers if energized by Distribution Facilities
    - ground grid
    - foundations
    - cable tray, trench or raceway or conduit bank
    - lighting
    - lightning rods and statics
    - spill prevention and retention facilities
7. Operational Responsibilities of Each Party:
- Each party controls and operates all the facilities it owns that are provided for in this Facility Schedule.
  - Per the December 21, 2007 Services Agreement between ETT and American Electric Power Service Corporation, AEP or its affiliates coordinate, direct, and perform all control center and field operation activities on the facilities owned by ETT. These activities shall include, but are not limited to, switching, clearances, and outages for planned maintenance and operations, emergency service restoration, and overall coordination of such activities with ERCOT.
8. Maintenance Responsibilities of Each Party:
- Each Party is responsible for maintenance of the facilities it owns that are provided for in this Facility Schedule.
9. Cost Responsibilities of the Parties:
- Each Party will be fully responsible for the costs and liabilities related to the facilities it owns.
10. Other Terms and Conditions:           None







## FACILITY SCHEDULE NO. 20

1. Name: **West Childress**
2. Facility Location: The West Childress Substation is located at 1400 Ave H SW in the City of Childress, Childress County, Texas. The Point of Interconnection is located at the Substation dead-end where the jumpers from the Substation equipment connect to the terminating transmission line from Henry substation.
3. Delivery Voltage: 69 kV
4. Normal Operation of Interconnection: Closed
5. One-Line Diagram Attached: Yes
6. Facility Ownership Responsibilities of the Parties:

ETT owns the following facilities:

  - the 69 kV transmission line from the West Childress Substation to the Henry substation

AEP owns the following facilities:

  - the West Childress Substation and all the facilities within the Substation
  - the conductors from the station equipment to the West Childress Substation – Henry 69 kV transmission line
7. Operational Responsibilities of Each Party:
  - Each party controls and operates all the facilities it owns that are provided for in this Facility Schedule.
  - Per the December 21, 2007 Services Agreement between ETT and American Electric Power Service Corporation, AEP or its affiliates coordinate, direct, and perform all control center and field operation activities on the facilities owned by ETT. These activities shall include, but are not limited to, switching, clearances, and outages for planned maintenance and operations, emergency service restoration, and overall coordination of such activities with ERCOT.
8. Maintenance Responsibilities of Each Party:
  - Each Party is responsible for maintenance of the facilities it owns that are provided for in this Facility Schedule.
9. Cost Responsibilities of the Parties:

- Each Party will be fully responsible for the costs and liabilities related to the facilities it owns.

10. Other Terms and Conditions:       None





#### **FACILITY SCHEDULE NO. 21**

1. Name: **Childress 20<sup>th</sup> Street**
2. Facility Location: The Childress 20<sup>th</sup> Street Substation is located at 1911 Ave. H in the City of Childress, Childress County, Texas. The Point of Interconnection is located at the Substation dead-end structure where the jumpers from the Substation equipment connect to the terminating 69 kV transmission line from Brazos Electric Cooperative's Henry Substation.
3. Delivery Voltage: 69 kV
4. Normal Operation of Interconnection: Closed
5. One-Line Diagram Attached: Yes
6. Facility Ownership Responsibilities of the Parties:

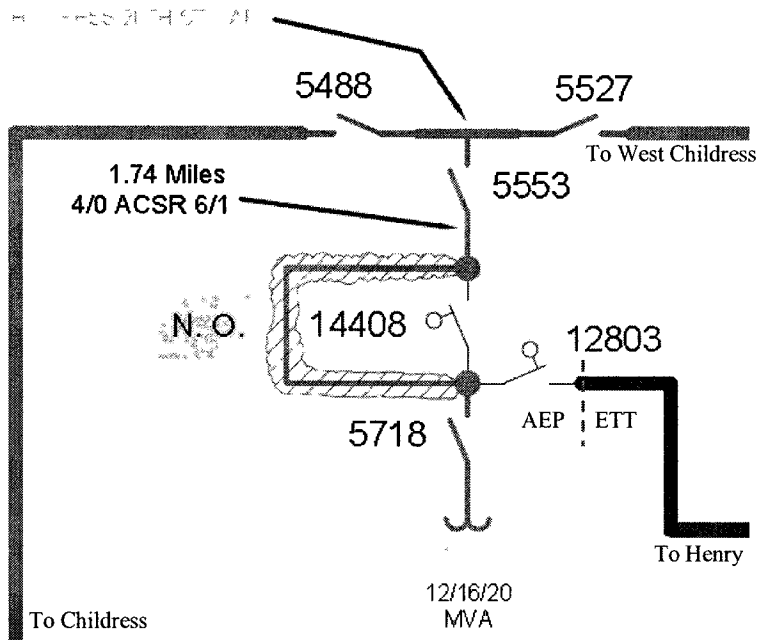
ETT owns the following facilities:

  - the 69kV line from Childress 20<sup>th</sup> Street Substations to the Henry Substation

AEP owns the following facilities:

  - all transmission and Distribution Facilities within the Childress 20<sup>th</sup> Street Substation.
  - all structures including the 1/1-tap structure on the Childress 20<sup>th</sup> Street to Childress 69 kV transmission line
  - two (2) 69 kV switches, #12803 and #14408 associated with the 1/1-tap structure
7. Operational Responsibilities of Each Party:
  - Each party controls and operates all the facilities it owns that are provided for in this Facility Schedule.
  - Per the December 21, 2007 Services Agreement between ETT and American Electric Power Service Corporation, AEP or its affiliates coordinate, direct, and perform all control center and field operation activities on the facilities owned by ETT. These activities shall include, but are not limited to, switching, clearances, and outages for planned maintenance and operations, emergency service restoration, and overall coordination of such activities with ERCOT.
8. Maintenance Responsibilities of Each Party:
  - Each Party is responsible for maintenance of the facilities it owns that are provided for in this Facility Schedule.

9. Cost Responsibilities of the Parties:
- Each Party will be fully responsible for the costs and liabilities related to the facilities it owns.
10. Other Terms and Conditions:       None



## FACILITY SCHEDULE NO. 22

1. Name: **Cisco**
2. Facility Location: The Cisco Substation is located at 200 East 5th St. in the City of Cisco, Eastland County, Texas. The Point of Interconnection is at the 69 kV bushings of the distribution transformer in the Cisco Substation.
3. Delivery Voltage: 69kV
4. Normal Operation of Interconnection: Closed
5. One-Line Diagram Attached: Yes
6. Facility Ownership Responsibilities of the Parties:

ETT owns the following facilities:

- all transmission facilities other than Telecommunication Facilities in the Cisco Substation between (i) the substation dead end structure to which is attached the Putnam to Leon 69kV transmission line and (ii) the 69kV bushings of the distribution transformer in the Cisco Substation (which bushings are owned by AEP)
- all protective, metering, or control facilities and equipment within the Cisco Substation not functioning exclusively as protective, metering, or control devices for, or in support of the operation or maintenance of Distribution Facilities
- the 69kV transmission line from the Cisco Substation to the Putnam Substation including the tap line into the Cisco Substation which is attached to switches 2006 and 2018 on the substation deadend structure

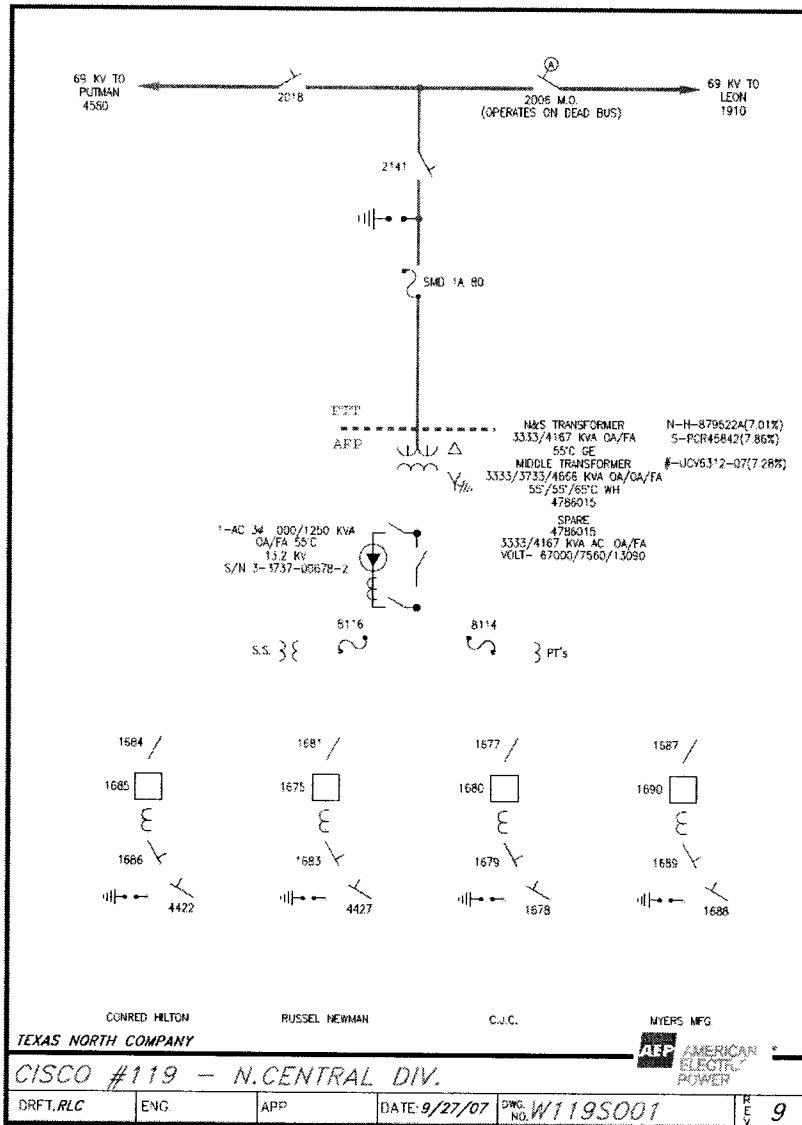
AEP owns the following facilities:

- all Distribution Facilities within the Cisco Substation including the distribution transformers and all facilities and equipment functioning exclusively as protective, metering, or control devices for, or in support of the operation or maintenance of Distribution Facilities
- the substation property, including perimeter fencing, as well as control house structure within the Cisco Substation

7. Operational Responsibilities of Each Party:
  - Each party controls and operates all the facilities it owns that are provided for in this Facility Schedule.
  - Per the December 21, 2007 Services Agreement between ETT and American Electric Power Service Corporation, AEP or its affiliates coordinate, direct, and perform all control center and field operation activities on the facilities owned by

ETT. These activities shall include, but are not limited to, switching, clearances, and outages for planned maintenance and operations, emergency service restoration, and overall coordination of such activities with ERCOT.

8. Maintenance Responsibilities of Each Party:
  - Each Party is responsible for maintenance of the facilities it owns that are provided for in this Facility Schedule.
9. Cost Responsibilities of the Parties:
  - Each Party will be fully responsible for the costs and liabilities related to the facilities it owns.
10. Other Terms and Conditions:       None



### FACILITY SCHEDULE NO. 23

1. Name: **Putnam**
2. Facility Location: The Putnam Substation is located at 900 County Rd. 317 in the City of Putnam, Callahan County, Texas. The Point of Interconnection is at the substation dead-end structure that terminates the 69 kV transmission line from the Leon Substation where the conductors from the substation equipment contact the conductors of the transmission line.
3. Delivery Voltage: 69 kV
4. Normal Operation of Interconnection: Closed
5. One-Line Diagram Attached: Yes
6. Facility Ownership Responsibilities of the Parties:

ETT owns the following facilities:

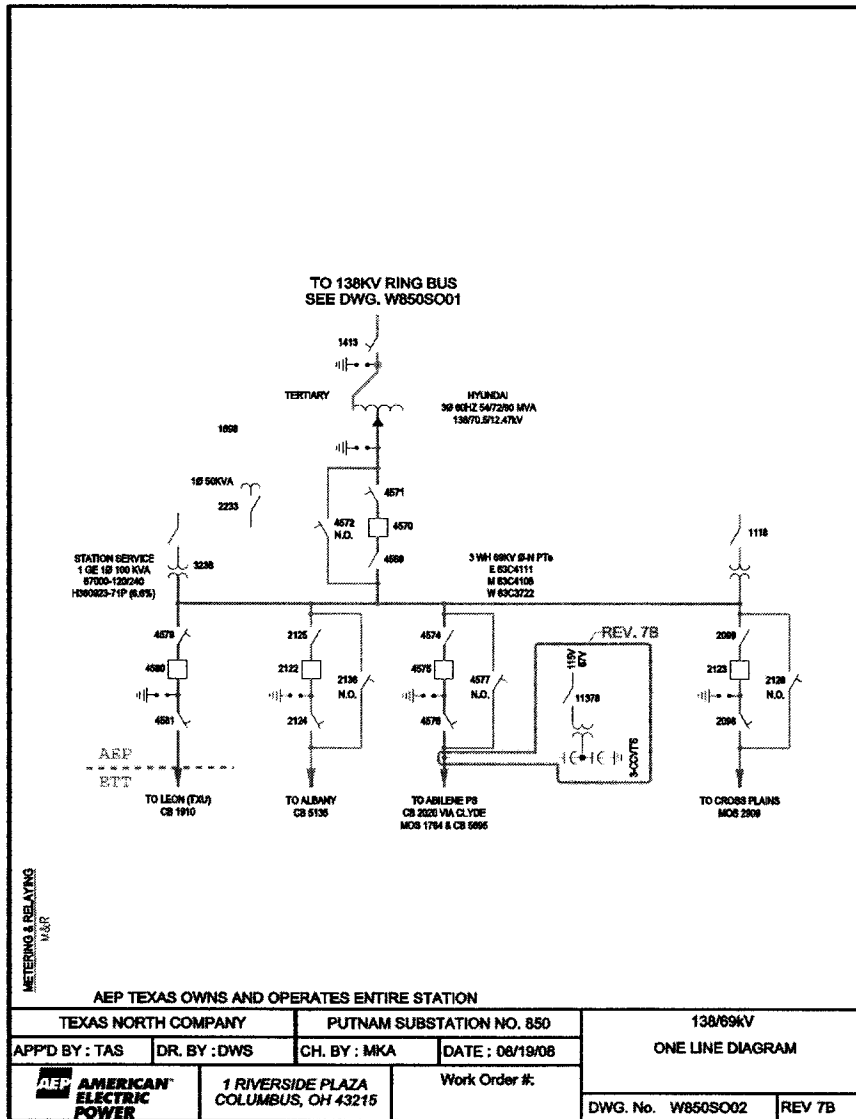
  - the 69 kV transmission line from the Putnam Substation to the Leon Substation to the point of interconnection with Oncor Energy Delivery

AEP owns the following facilities:

  - the Putnam Substation, including all of the facilities within it
  - the 69kV transmission line from the Putnam Substation to the Abilene Power Station
  - the 69kV transmission line from the Putnam Substation to the Albany Substation
  - the 69kV transmission line from the Putnam Substation to the Cross Plains Substation
  - the 138kV transmission line from the Putnam Substation to the Leon Substation
  - the 138kV transmission line from the Putnam Substation to the South Abilene Substation
7. Operational Responsibilities of Each Party:
  - Each party controls and operates all the facilities it owns that are provided for in this Facility Schedule.
  - Per the December 21, 2007 Services Agreement between ETT and American Electric Power Service Corporation, AEP or its affiliates coordinate, direct, and perform all control center and field operation activities on the facilities owned by ETT. These activities shall include, but are not limited to, switching, clearances, and outages for planned maintenance and operations, emergency service restoration, and overall coordination of such activities with ERCOT.



8. Maintenance Responsibilities of Each Party:
  - Each Party is responsible for maintenance of the facilities it owns that are provided for in this Facility Schedule.
9. Cost Responsibilities of the Parties:
  - Each Party will be fully responsible for the costs and liabilities related to the facilities it owns.
10. Other Terms and Conditions:       None



#### FACILITY SCHEDULE NO. 24

1. Name: **Illinois #4**
2. Facility Location: The Illinois #4 Substation is located at 685 County Rd. 414 approximately 40 miles southwest of the City of Ozona, Crockett County, Texas. The Point of Interconnection is at the substation dead-end structure that terminates the 69 kV transmission line from the Ozona Substation where the jumper conductors from the substation equipment physically contact the connectors on the transmission line conductors.
3. Delivery Voltage: 69 kV
4. Normal Operation of Interconnection: Closed
5. One-Line Diagram Attached: Yes
6. Facility Ownership Responsibilities of the Parties:

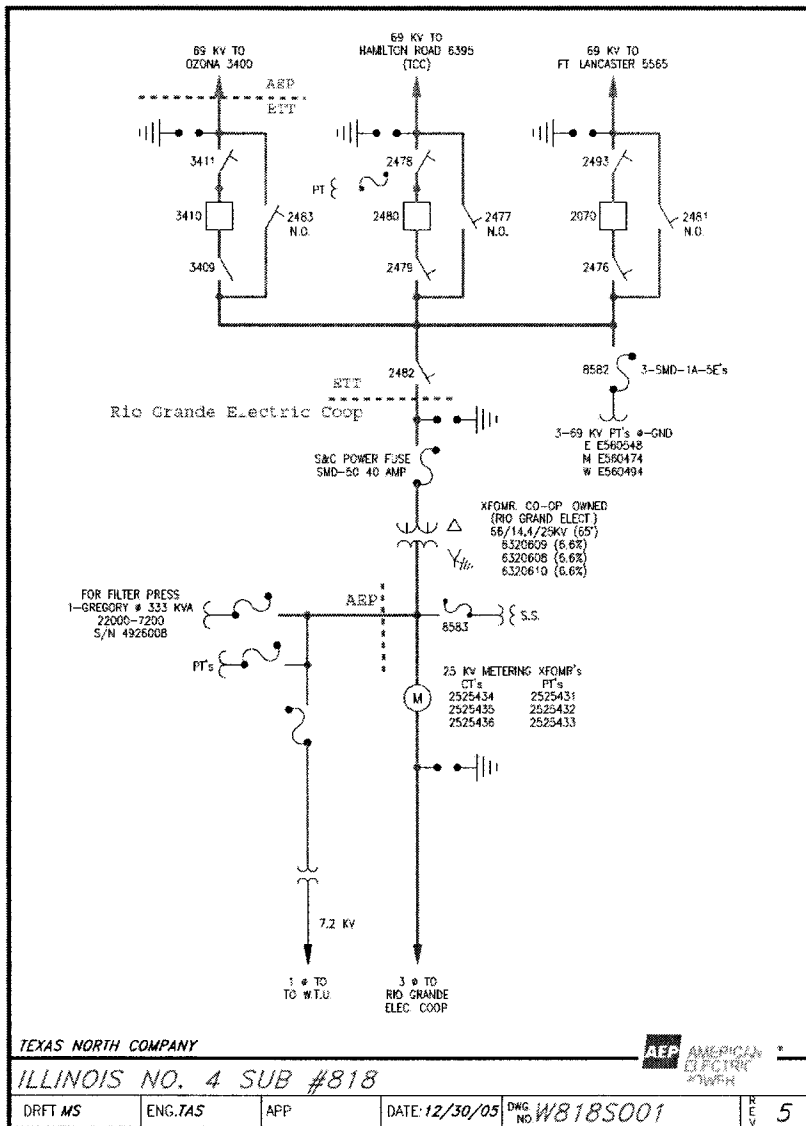
ETT owns the following facilities unless expressly described as footprint facilities below:

- all transmission facilities other than Telecommunication Facilities in the Illinois #4 Substation, including the substation dead end structures between (i) the substation dead-end structures to which are attached the 69kV transmission line to the Fort Lancaster Substation, the 69kV transmission line to the Hamilton Road Substation (via Comstock Substation and Rough Canyon Substation) and the 69kV transmission line to the Ozona Substation and (ii) the load side of switch 2482 that connects to the Rio Grande Electric Cooperative, Inc. (RGEC) distribution transformer in the Illinois #4 Substation
- all protective, metering, or control facilities and equipment within the Illinois #4 Substation not functioning exclusively as protective, metering, or control devices for, or in support of the operation or maintenance of Distribution Facilities
- the 69kV transmission line to the Fort Lancaster Substation
- approximately 22.9 miles of the 69kV transmission line to the Hamilton Road Substation to a point in the line where it interconnects with AEP Texas Central Company

AEP owns the following facilities:

- the 69kV transmission line to the Ozona Substation
- the substation property, including perimeter fencing, as well as control house structure within the Illinois #4 Substation
- Distribution Facilities not owned by Rio Grande Electric Cooperative

- the following footprint facilities within the ground grid boundary of the Illinois #4 Substation:
  - station service transformer if energized by Distribution Facilities
  - instrument transformers if energized by Distribution Facilities
  - ground grid
  - foundations
  - cable tray, trench or raceway or conduit bank
  - lighting
  - lightning rods and statics
  - spill prevention and retention facilities
- 7. Operational Responsibilities of Each Party:
  - Each party controls and operates all the facilities it owns that are provided for in this Facility Schedule.
  - Per the December 21, 2007 Services Agreement between ETT and American Electric Power Service Corporation, AEP or its affiliates coordinate, direct, and perform all control center and field operation activities on the facilities owned by ETT. These activities shall include, but are not limited to, switching, clearances, and outages for planned maintenance and operations, emergency service restoration, and overall coordination of such activities with ERCOT.
- 8. Maintenance Responsibilities of Each Party:
  - Each Party is responsible for maintenance of the facilities it owns that are provided for in this Facility Schedule.
- 9. Cost Responsibilities of the Parties:
  - Each Party will be fully responsible for the costs and liabilities related to the facilities it owns.
- 10. Other Terms and Conditions:           None



## FACILITY SCHEDULE NO. 25

1. Name: **Fort Lancaster**
2. Facility Location: The Fort Lancaster Substation is located at 10069 East Hwy 290 approximately 5 miles east of the City of Sheffield, Crockett County, Texas. The Point of Interconnection is at the substation dead end structure where the conductors from the Fort Lancaster Substation equipment connect to the conductors of the 69 kV transmission line from the Illinois #4 Substation.
3. Delivery Voltage: 69 kV
4. Normal Operation of Interconnection: Closed
5. One-Line Diagram Attached: Yes
6. Facility Ownership Responsibilities of the Parties:

ETT owns the following facilities:

  - the 69 kV transmission line to the Illinois #4 Substation

AEP owns the following facilities:

  - the 69 kV Fort Lancaster Substation including all the facilities within it except for those owned by LCRA
  - the 138/69 kV autotransformer and associated equipment
  - the 69 kV transmission line from the Fort Lancaster Substation to the West Yates Substation
7. Operational Responsibilities of Each Party:
  - Each party controls and operates all the facilities it owns that are provided for in this Facility Schedule.
  - Per the December 21, 2007 Services Agreement between ETT and American Electric Power Service Corporation, AEP or its affiliates coordinate, direct, and perform all control center and field operation activities on the facilities owned by ETT. These activities shall include, but are not limited to, switching, clearances, and outages for planned maintenance and operations, emergency service restoration, and overall coordination of such activities with ERCOT.
8. Maintenance Responsibilities of Each Party:
  - Each Party is responsible for maintenance of the facilities it owns that are provided for in this Facility Schedule.

9. Cost Responsibilities of the Parties:
  - Each Party will be fully responsible for the costs and liabilities related to the facilities it owns.
10. Other Terms and Conditions: None





## FACILITY SCHEDULE NO. 26

1. Name: **Muleta**
2. Facility Location: The Muleta Substation is located approximately 5.3 miles northwest of the City of Matador on the east side of State Road 70 in Motley County, Texas. The two (2) Points of Interconnection at this location are where the conductors from the two sectionalizing line switches connect to the conductors of the Matador to Estelline 69 kV transmission line.
3. Delivery Voltage: 69 kV
4. Normal Operation of Interconnection: Closed
5. One-Line Diagram Attached: Yes
6. Facility Ownership Responsibilities of the Parties:

ETT owns the following facilities:

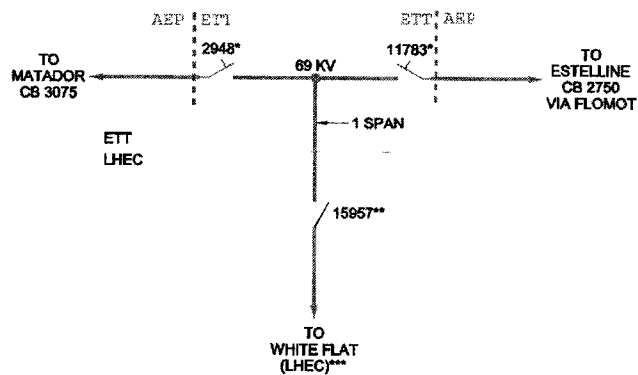
  - two (2) 69 kV sectionalizing line switches (#2948 and #11783)
  - 69kV transmission line from these switches to the point of interconnection with Lighthouse Electric Cooperative

AEP owns the following facilities:

  - the Matador to Estelline 69 kV transmission line, excluding the facilities owned by ETT as described above
7. Operational Responsibilities of Each Party:
  - Each party controls and operates all the facilities it owns that are provided for in this Facility Schedule.
  - Per the December 21, 2007 Services Agreement between ETT and American Electric Power Service Corporation, AEP or its affiliates coordinate, direct, and perform all control center and field operation activities on the facilities owned by ETT. These activities shall include, but are not limited to, switching, clearances, and outages for planned maintenance and operations, emergency service restoration, and overall coordination of such activities with ERCOT.
8. Maintenance Responsibilities of Each Party:
  - Each Party is responsible for maintenance of the facilities it owns that are provided for in this Facility Schedule.
9. Cost Responsibilities of the Parties:

- Each Party will be fully responsible for the costs and liabilities related to the facilities it owns.

10. Other Terms and Conditions: None





NOTE:

\* 69 KV, 2000A CONTINUOUS,  
GROUP OPERATED, MANUAL,  
PHASE OVER PHASE MOUNTING

\*\* SWITCH OWNED AND OPERATED BY LHEC.  
SWITCH NUMBER ISSUED BY AEP-TEXAS.

\*\*\* METERING TO BE AT WHITE FLAT (LHEC)

ENTIRE STATION OWNED AND OPERATED BY ELECTRIC TRANSMISSION TEXAS EXCEPT AS NOTED

ELECTRIC TRANSMISSION TEXAS		MULETA #450		69KV	
APPD BY: DLG	DR. BY: RLC	CH. BY: CJC	DATE: 2/9/10	DISPATCH ONE LINE	
 Electric Transmission Texas		 ENGINEERED BY: AMERICAN ELECTRIC POWER SERVICE CORPORATION REGISTRATION #: 7-2811		Work Order #: 41309423	
				DWG. No. W450SO01	REV 0

#### FACILITY SCHEDULE NO. 27

1. Name: **Vernon Main**
2. Facility Location: The Vernon Main Substation is located at 600 Main St. in the City of Vernon, Wilbarger County, Texas. The two Points of Interconnection are at the dead-end structure that terminates the 69 kV transmission line from the SW Vernon Substation and the dead-end structure that terminates the 138 kV transmission line from the Lake Pauline Substation where the jumper conductors from the substation equipment physically contact the connectors on the transmission lines' conductors.
3. Delivery Voltage: 69 kV & 138 kV
4. Normal Operation of Interconnection: Closed
5. One-Line Diagram Attached: Yes
6. Facility Ownership Responsibilities of the Parties:

ETT owns the following facilities:

  - the portion of the Vernon Main – Lake Pauline 138 kV transmission line from and including structure 24/4 to the Vernon Main Substation
  - the 69 kV transmission line from the Vernon Main Substation to the SW Vernon Substation

AEP owns the following facilities:

  - the Vernon Main Substation including all of the facilities within it
7. Operational Responsibilities of Each Party:
  - Each party controls and operates all the facilities it owns that are provided for in this Facility Schedule.
  - Per the December 21, 2007 Services Agreement between ETT and American Electric Power Service Corporation, AEP or its affiliates coordinate, direct, and perform all control center and field operation activities on the facilities owned by ETT. These activities shall include, but are not limited to, switching, clearances, and outages for planned maintenance and operations, emergency service restoration, and overall coordination of such activities with ERCOT.
8. Maintenance Responsibilities of Each Party:
  - Each Party is responsible for maintenance of the facilities it owns that are provided for in this Facility Schedule.

9. Cost Responsibilities of the Parties:
- Each Party will be fully responsible for the costs and liabilities related to the facilities it owns.
10. Other Terms and Conditions:       None

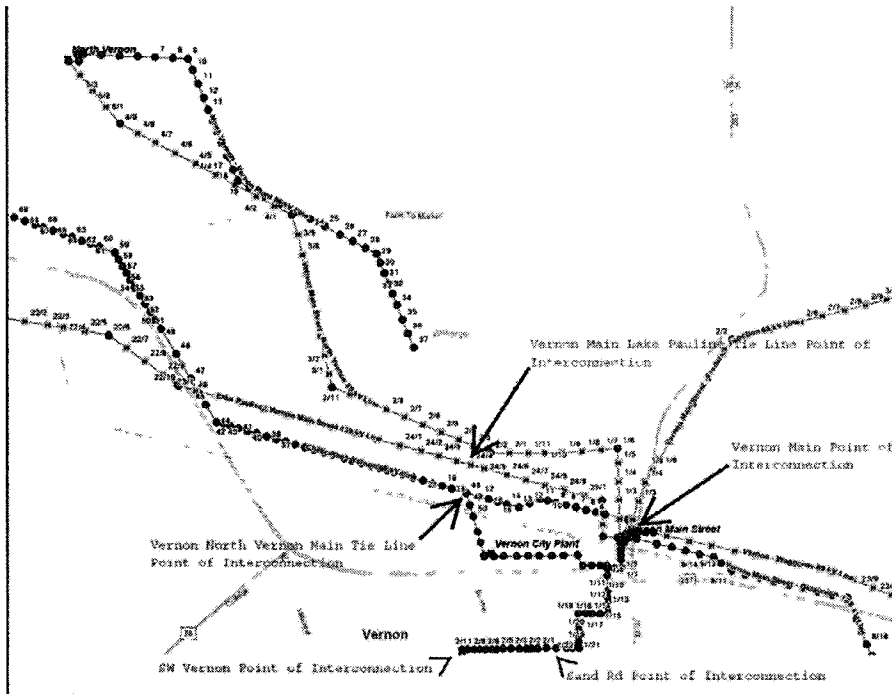


## FACILITY SCHEDULE NO. 28

1. Name: **Vernon Main-Lake Pauline Tie Line**
2. Facility Location: The Point of Interconnection is located at structure 24/4 in the Vernon Main-Lake Pauline 138 kV transmission line approximately one mile from the Vernon Main Substation.
3. Delivery Voltage: 138 kV
4. Normal Operation of Interconnection: Closed
5. One-Line Diagram Attached: Yes
6. Facility Ownership Responsibilities of the Parties:  
  
ETT owns the following facilities:
  - the portion of the Vernon Main – Lake Pauline 138 kV transmission line from and including structure 24/4 to the Vernon Main Substation  
AEP owns the following facilities:
  - the portion of the Vernon Main – Lake Pauline 138 kV transmission line from, but excluding, structure 24/4 to the Lake Pauline Substation
7. Operational Responsibilities of Each Party:
  - Each party controls and operates all the facilities it owns that are provided for in this Facility Schedule.
  - Per the December 21, 2007 Services Agreement between ETT and American Electric Power Service Corporation, AEP or its affiliates coordinate, direct, and perform all control center and field operation activities on the facilities owned by ETT. These activities shall include, but are not limited to, switching, clearances, and outages for planned maintenance and operations, emergency service restoration, and overall coordination of such activities with ERCOT.
8. Maintenance Responsibilities of Each Party:
  - Each Party is responsible for maintenance of the facilities it owns that are provided for in this Facility Schedule.
9. Cost Responsibilities of the Parties:
  - Each Party will be fully responsible for the costs and liabilities related to the facilities it owns.

10. Other Terms and Conditions: None





### FACILITY SCHEDULE NO. 29

1. Name: **Vernon Main-Vernon North Tie Line**
2. Facility Location: The Point of Interconnection is located at structure 48 in the Vernon Main-Vernon North 69 kV transmission line approximately one mile from the Vernon Main Substation.
3. Delivery Voltage: 69 kV
4. Normal Operation of Interconnection: Closed
5. One-Line Diagram Attached: Yes
6. Facility Ownership Responsibilities of the Parties:

ETT owns the following facilities:

  - the portion of the Vernon Main – Vernon North 69 kV transmission line from and including structure 48 to the Vernon Main Substation

AEP owns the following facilities:

  - the portion of the Vernon Main – Vernon North 69 kV transmission line from, but excluding, structure 48 to the Vernon North Substation
7. Operational Responsibilities of Each Party:
  - Each party controls and operates all the facilities it owns that are provided for in this Facility Schedule.
  - Per the December 21, 2007 Services Agreement between ETT and American Electric Power Service Corporation, AEP or its affiliates coordinate, direct, and perform all control center and field operation activities on the facilities owned by ETT. These activities shall include, but are not limited to, switching, clearances, and outages for planned maintenance and operations, emergency service restoration, and overall coordination of such activities with ERCOT.
8. Maintenance Responsibilities of Each Party:
  - Each Party is responsible for maintenance of the facilities it owns that are provided for in this Facility Schedule.
9. Cost Responsibilities of the Parties:
  - Each Party will be fully responsible for the costs and liabilities related to the facilities it owns.