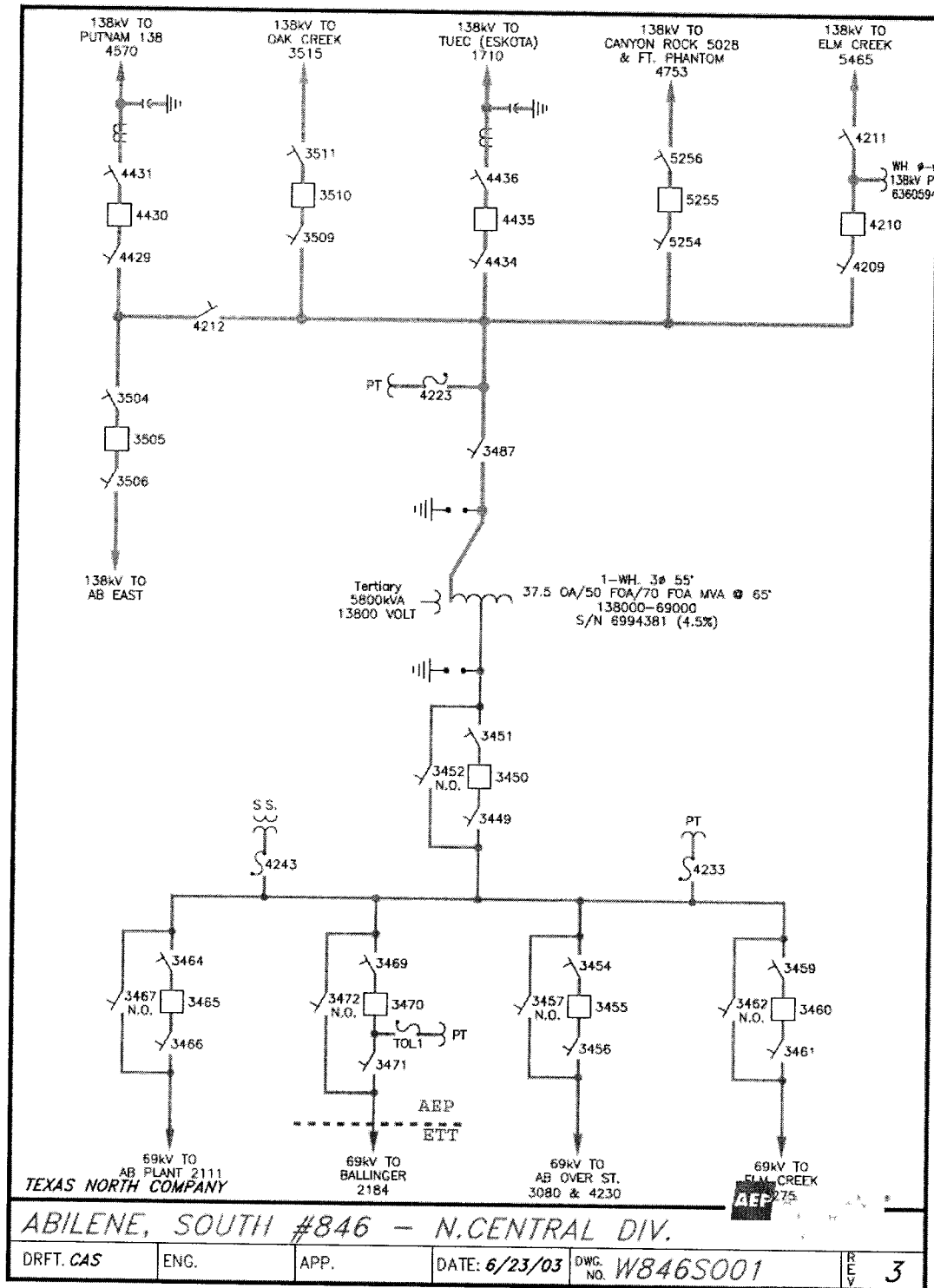


FACILITY SCHEDULE NO. 6

1. Name: **South Abilene**
2. Facility Location: The South Abilene Substation is located at 2418 Waldrop in the City of Abilene, Taylor County, TX. The Point of Interconnection is at the dead-end structure that terminates the 69 kV transmission line from the Cedar Gap Substation where the jumper conductors from the substation equipment physically contact the connectors on the transmission line conductors.
3. Delivery Voltage: 69 kV
4. Normal Operation of Interconnection: Closed
5. One-Line Diagram Attached: Yes
6. Facility Ownership Responsibilities of the Parties:
 - ETT owns the following facilities:
 - the 69 kV transmission line between the South Abilene Substation and the Cedar Gap Substation
 - AEP owns the following facilities:
 - the South Abilene Substation and all the facilities within the substation
 - the conductors from the station equipment to the 69 kV South Abilene to Cedar Gap transmission line
7. Operational Responsibilities of Each Party:
 - Each party controls and operates all the facilities it owns that are provided for in this Facility Schedule.
 - Per the December 21, 2007 Services Agreement between ETT and American Electric Power Service Corporation, AEP or its affiliates coordinate, direct, and perform all control center and field operation activities on the facilities owned by ETT. These activities shall include, but are not limited to, switching, clearances, and outages for planned maintenance and operations, emergency service restoration, and overall coordination of such activities with ERCOT.
8. Maintenance Responsibilities of Each Party:
 - Each Party is responsible for maintenance of the facilities it owns that are provided for in this Facility Schedule.
9. Cost Responsibilities of the Parties:

- Each Party will be fully responsible for the costs and liabilities related to the facilities it owns.

10. Other Terms and Conditions: None



FACILITY SCHEDULE NO. 7

1. Name: **Cedar Gap**
2. Facility Location: The Cedar Gap Substation is located at the intersection of S Hwy 83-84 & CR 147 in the City of Abilene, Taylor County, TX. The two (2) Points of Interconnection are within the substation at 1) the 69 kV dead-end structure of the Cedar Gap to South Abilene transmission line, and 2) the 69 kV dead-end structure of the transmission line from the Cedar Gap Substation to the Taylor Electric Cooperative ("Cooperative") Roberts Substation.
3. Delivery Voltage: 69 kV
4. Normal Operation of Interconnection: Closed
5. One-Line Diagram Attached: Yes
6. Facility Ownership Responsibilities of the Parties:

ETT owns the following facilities:

 - the 69 kV transmission line between the Cedar Gap Substation and the South Abilene Substation
 - the 69 kV transmission line between the Cedar Gap Substation and Cooperative's Roberts Substation

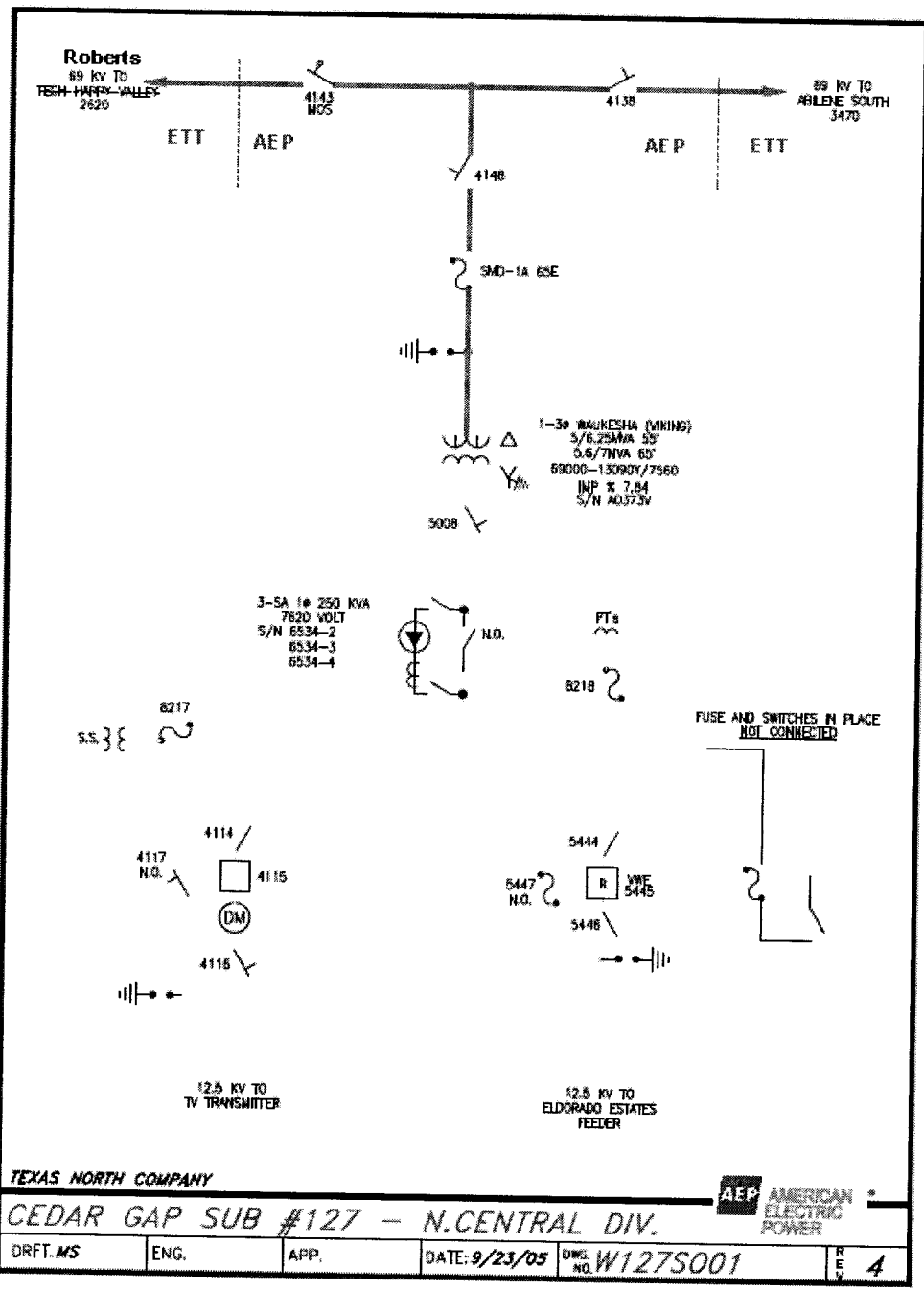
AEP owns the following facilities:

 - the Cedar Gap Substation and all the facilities within the substation
 - the conductors from the station equipment to both 69 kV dead-end structures
7. Operational Responsibilities of Each Party:
 - Each party controls and operates all the facilities it owns that are provided for in this Facility Schedule.
 - Per the December 21, 2007 Services Agreement between ETT and American Electric Power Service Corporation, AEP or its affiliates coordinate, direct, and perform all control center and field operation activities on the facilities owned by ETT. These activities shall include, but are not limited to, switching, clearances, and outages for planned maintenance and operations, emergency service restoration, and overall coordination of such activities with ERCOT.
8. Maintenance Responsibilities of Each Party:
 - Each Party is responsible for maintenance of the facilities it owns that are provided for in this Facility Schedule.

9. Cost Responsibilities of the Parties:

- Each Party will be fully responsible for the costs and liabilities related to the facilities it owns.

10. Other Terms and Conditions: None



FACILITY SCHEDULE NO. 8

1. Name: **Tuscola**
2. Facility Location: The Tuscola Substation is located at 101 1st Street in the City of Tuscola, Taylor County, TX. The two (2) Points of Interconnection are within the substation at 1) the 69 kV dead-end structure of the transmission line from the Tuscola Substation to the Taylor Electric Cooperative ("Cooperative") Roberts Substation, and 2) the 69 kV dead-end structure of the Tuscola to Bradshaw/Climax transmission line.
3. Delivery Voltage: 69 kV
4. Normal Operation of Interconnection: Closed
5. One-Line Diagram Attached: Yes
6. Facility Ownership Responsibilities of the Parties:

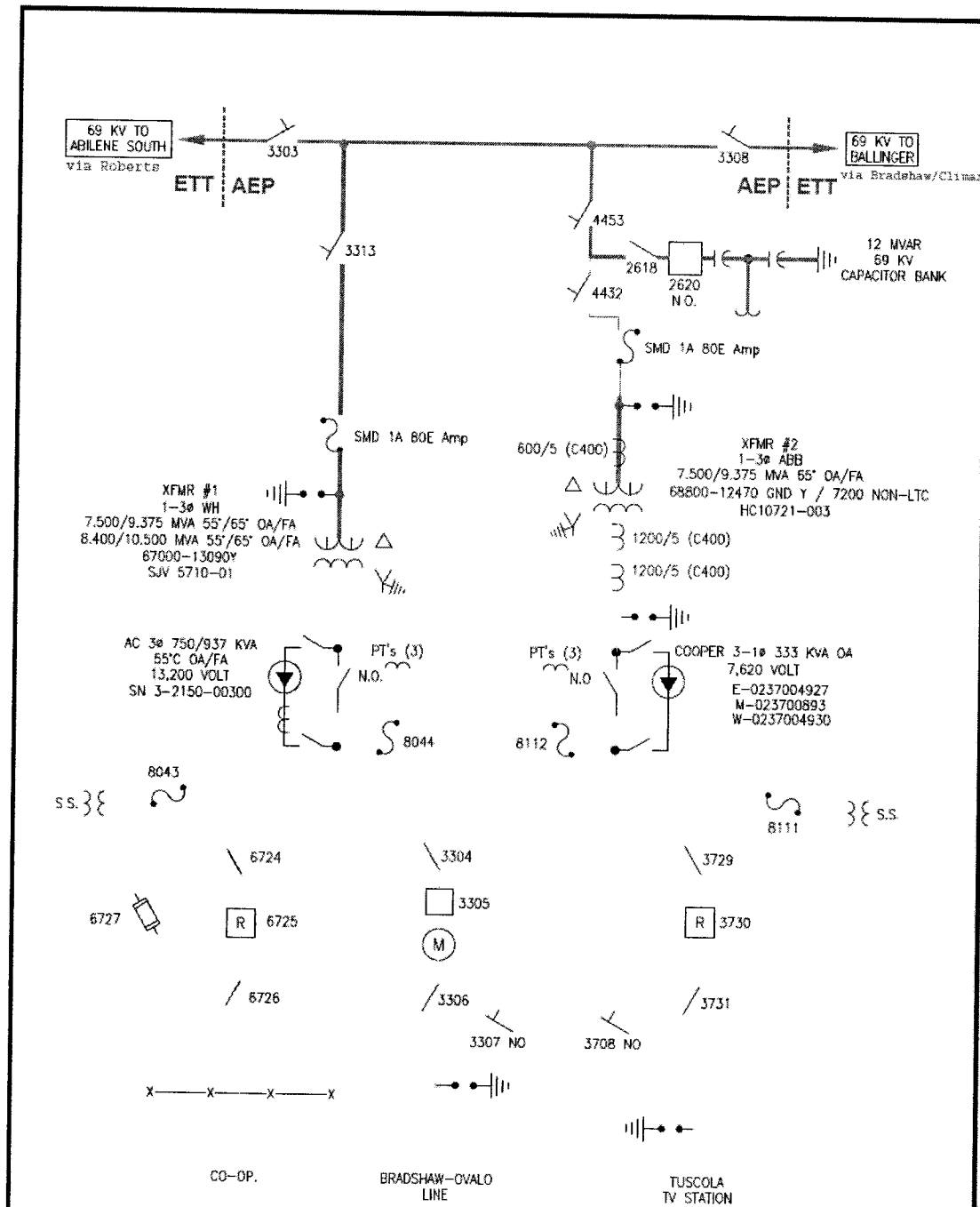
ETT owns the following facilities:

 - the 69 kV transmission line between the Tuscola Substation and Cooperative's Roberts Substation
 - the 69 kV transmission line between the Tuscola Substation and the Bradshaw/Climax Substation

AEP owns the following facilities:

 - the Tuscola Substation and all the facilities within the substation
 - the conductors from the station equipment to both 69 kV dead-end structures
7. Operational Responsibilities of Each Party:
 - Each party controls and operates all the facilities it owns that are provided for in this Facility Schedule.
 - Per the December 21, 2007 Services Agreement between ETT and American Electric Power Service Corporation, AEP or its affiliates coordinate, direct, and perform all control center and field operation activities on the facilities owned by ETT. These activities shall include, but are not limited to, switching, clearances, and outages for planned maintenance and operations, emergency service restoration, and overall coordination of such activities with ERCOT.
8. Maintenance Responsibilities of Each Party:
 - Each Party is responsible for maintenance of the facilities it owns that are provided for in this Facility Schedule.

9. Cost Responsibilities of the Parties:
- Each Party will be fully responsible for the costs and liabilities related to the facilities it owns.
10. Other Terms and Conditions: None



| | | | | | |
|------------------------------------|------|------|---------------|-----------------------------|---------|
| TEXAS NORTH COMPANY | | | | AEP AMERICAN ELECTRIC POWER | |
| TUSCOLA SUB #204 - N. CENTRAL DIV. | | | | | |
| DRFT. MS | ENG. | APP. | DATE: 3/31/05 | DWG. NO W204S001 | R E V 8 |

FACILITY SCHEDULE NO. 9

1. Name: **Bradshaw/Climax**
2. Facility Location: The Bradshaw/Climax Substation is located at 1374 CR 174 in the City of Bradshaw, Taylor County, TX. The two (2) Points of Interconnection are within the substation at 1) the 69 kV dead-end structure of the Bradshaw/Climax to Tuscola transmission line, and 2) the 69 kV dead-end structure of the Bradshaw/Climax to Happy Valley Tap transmission line..
3. Delivery Voltage: 69 kV
4. Normal Operation of Interconnection: Closed
5. One-Line Diagram Attached: Yes
6. Facility Ownership Responsibilities of the Parties:

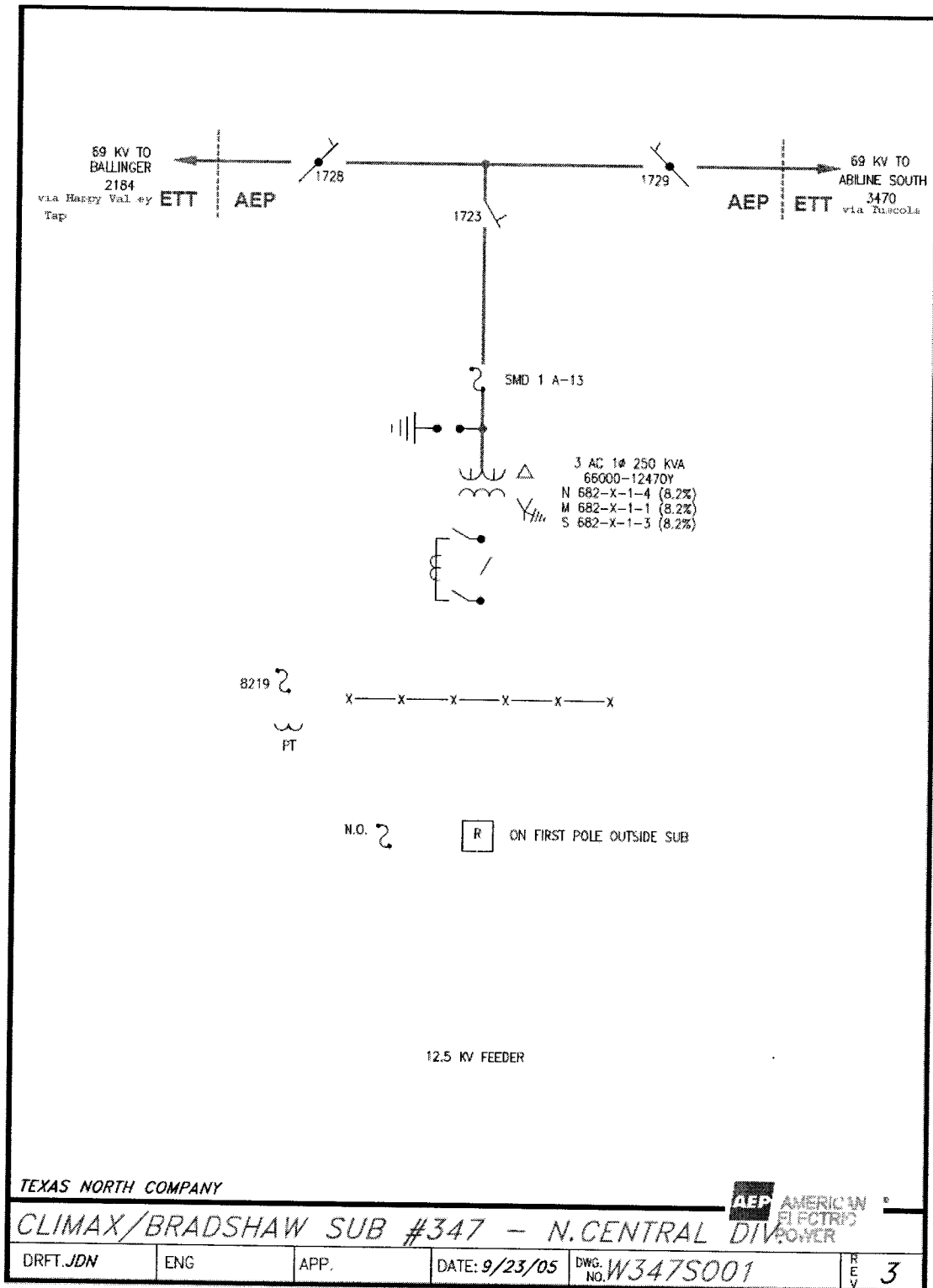
ETT owns the following facilities:

 - the 69 kV transmission line between the Bradshaw/Climax Substation and the Tuscola Substation
 - the 69 kV transmission line between the Bradshaw/Climax Substation and the Happy Valley Tap

AEP owns the following facilities:

 - the Bradshaw/Climax Substation and all the facilities within the substation
 - the conductors from the station equipment to both 69 kV dead-end structures
7. Operational Responsibilities of Each Party:
 - Each party controls and operates all the facilities it owns that are provided for in this Facility Schedule.
 - Per the December 21, 2007 Services Agreement between ETT and American Electric Power Service Corporation, AEP or its affiliates coordinate, direct, and perform all control center and field operation activities on the facilities owned by ETT. These activities shall include, but are not limited to, switching, clearances, and outages for planned maintenance and operations, emergency service restoration, and overall coordination of such activities with ERCOT.
8. Maintenance Responsibilities of Each Party:
 - Each Party is responsible for maintenance of the facilities it owns that are provided for in this Facility Schedule.

9. Cost Responsibilities of the Parties:
 - Each Party will be fully responsible for the costs and liabilities related to the facilities it owns.
10. Other Terms and Conditions: None



FACILITY SCHEDULE NO. 10

1. Name: **Winters**
2. Facility Location: The Winters Substation is located at on Hwy 83, quarter (.25) mile north of intersection with FM 1770 in the City of Winters, Runnels County. The two (2) Points of Interconnection are within the substation at 1) the 69 kV dead-end structure of the Winters to Happy Valley Tap transmission line, and 2) the 69 kV dead-end structure of the Winters to Hatchel transmission line..
3. Delivery Voltage: 69 kV
4. Normal Operation of Interconnection: Closed
5. One-Line Diagram Attached: Yes
6. Facility Ownership Responsibilities of the Parties:

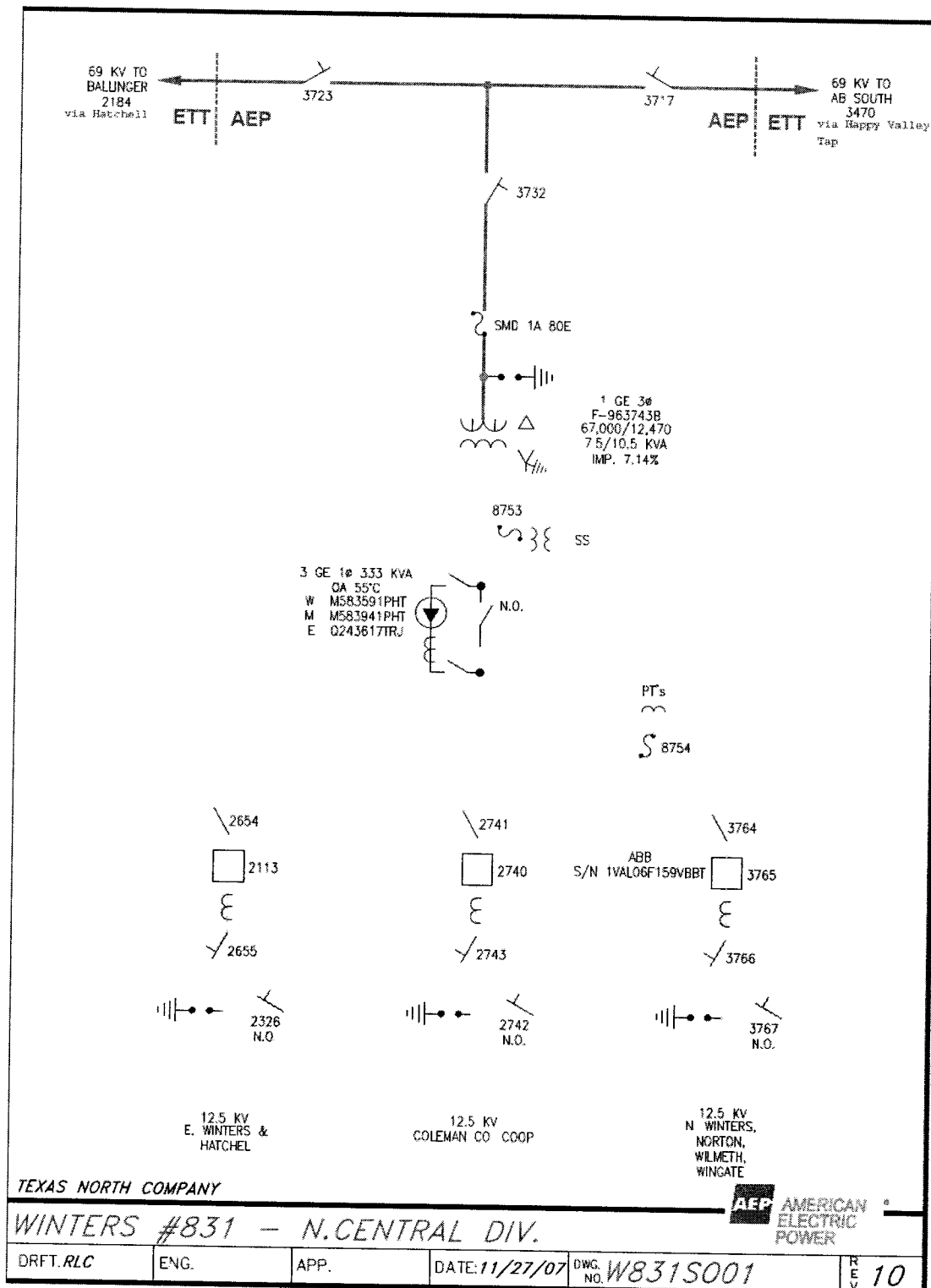
ETT owns the following facilities:

 - the 69 kV transmission line between the Winters Substation and the Happy Valley Tap
 - the 69 kV transmission line between the Winters Substation and the Hatchel Substation

AEP owns the following facilities:

 - the Winters Substation and all the facilities within the substation
 - the conductors from the station equipment to both 69 kV dead-end structures
7. Operational Responsibilities of Each Party:
 - Each party controls and operates all the facilities it owns that are provided for in this Facility Schedule.
 - Per the December 21, 2007 Services Agreement between ETT and American Electric Power Service Corporation, AEP or its affiliates coordinate, direct, and perform all control center and field operation activities on the facilities owned by ETT. These activities shall include, but are not limited to, switching, clearances, and outages for planned maintenance and operations, emergency service restoration, and overall coordination of such activities with ERCOT.
8. Maintenance Responsibilities of Each Party:
 - Each Party is responsible for maintenance of the facilities it owns that are provided for in this Facility Schedule.

9. Cost Responsibilities of the Parties:
- Each Party will be fully responsible for the costs and liabilities related to the facilities it owns.
10. Other Terms and Conditions: None



FACILITY SCHEDULE NO. 11

1. Name: **Hatchel**
2. Facility Location: The Hatchel Substation is located at 131 CR 332 near the City of Hatchel, Runnels County, TX. The Point of Interconnection is on the load-side of switch #3137 in the Hatchel Substation.
3. Delivery Voltage: 69 kV
4. Normal Operation of Interconnection: Closed
5. One-Line Diagram Attached: Yes
6. Facility Ownership Responsibilities of the Parties:

ETT owns the following facilities:

 - the 69 kV transmission line between the Hatchel Substation and the Winters Substation including line switch #3143
 - the 69 kV transmission line between the Hatchel Substation and the Ballinger Substation including line switch #3148
 - the 69kv transmission line between switch #3143, switch #3148, and switch #3137

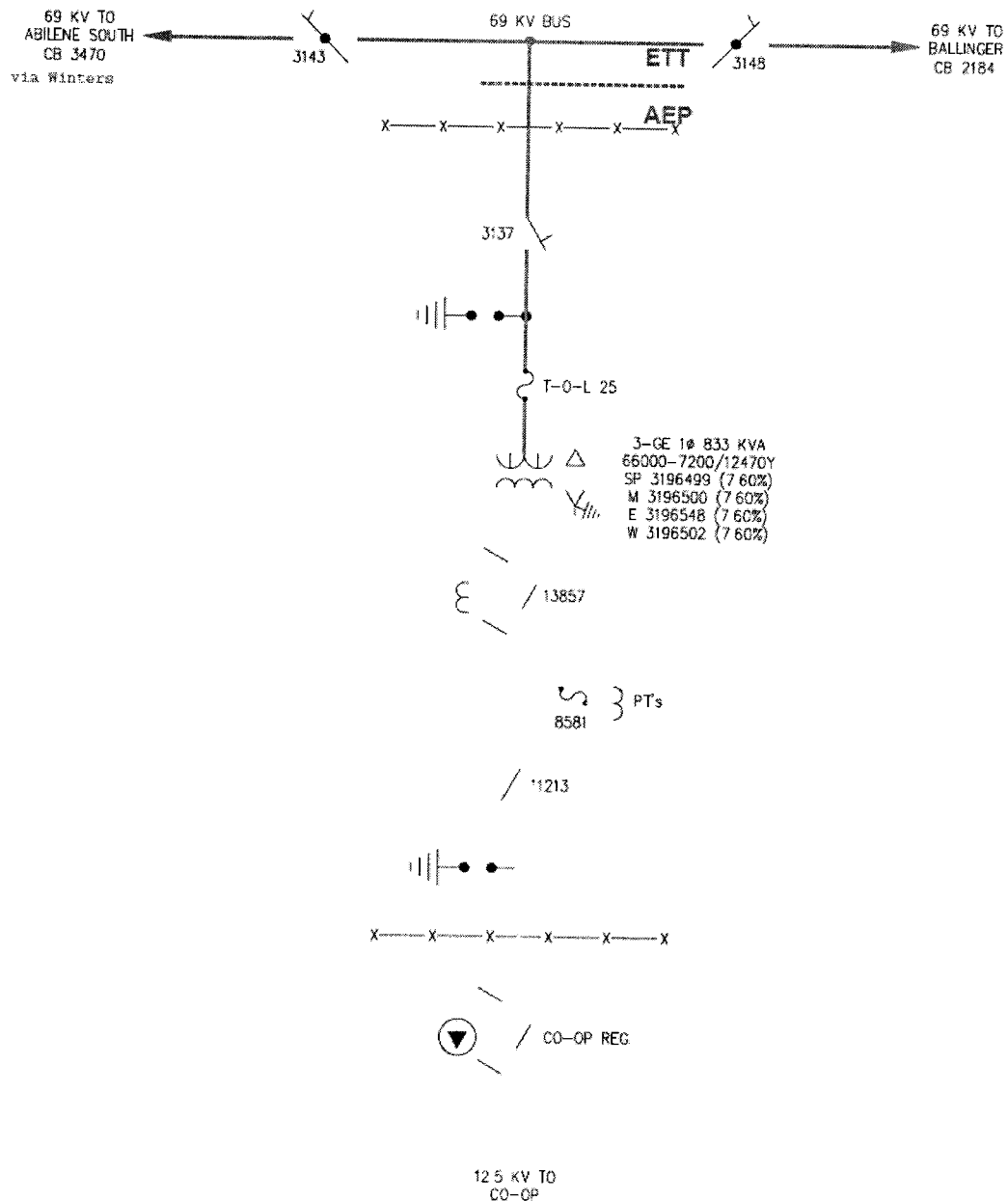
AEP owns the following facilities:

 - the Hatchel Substation and all the facilities within the substation
 - the conductors from switch #3137 to the Winters - Ballinger 69 kV transmission line
7. Operational Responsibilities of Each Party:
 - Each party controls and operates all the facilities it owns that are provided for in this Facility Schedule.
 - Per the December 21, 2007 Services Agreement between ETT and American Electric Power Service Corporation, AEP or its affiliates coordinate, direct, and perform all control center and field operation activities on the facilities owned by ETT. These activities shall include, but are not limited to, switching, clearances, and outages for planned maintenance and operations, emergency service restoration, and overall coordination of such activities with ERCOT.
8. Maintenance Responsibilities of Each Party:
 - Each Party is responsible for maintenance of the facilities it owns that are provided for in this Facility Schedule.

9. Cost Responsibilities of the Parties:

- Each Party will be fully responsible for the costs and liabilities related to the facilities it owns.

10. Other Terms and Conditions: None



| | | | | | |
|-----------------------------------|-------------|---|----------------|-------------------|-------|
| TEXAS NORTH COMPANY | | HATCHELL #356 | | 69/12.5KV | |
| APP'D BY : | DR. BY :RLC | CH. BY : CJC | DATE : 3/29/10 | DISPATCH ONE LINE | |
| AEP AMERICAN ELECTRIC POWER | | 1 RIVERSIDE PLAZA COLUMBUS, OH 43215 | Work Order #: | | |
| | | | | DWG. No. W356S001 | REV 5 |

FACILITY SCHEDULE NO. 12

1. Name: **Ballinger**
2. Facility Location: The Ballinger Substation is located at 105 N. 4th St. in the City of Ballinger, Runnels County, TX. The Point of Interconnection is at the dead-end structure of the 69 kV transmission line from the South Abilene Substation where the jumper conductors from the substation equipment physically contact the connectors on the 69 kV transmission line conductors.
3. Delivery Voltage: 69 kV
4. Normal Operation of Interconnection: Closed
5. One-Line Diagram Attached: Yes
6. Facility Ownership Responsibilities of the Parties:

ETT owns the following facilities:

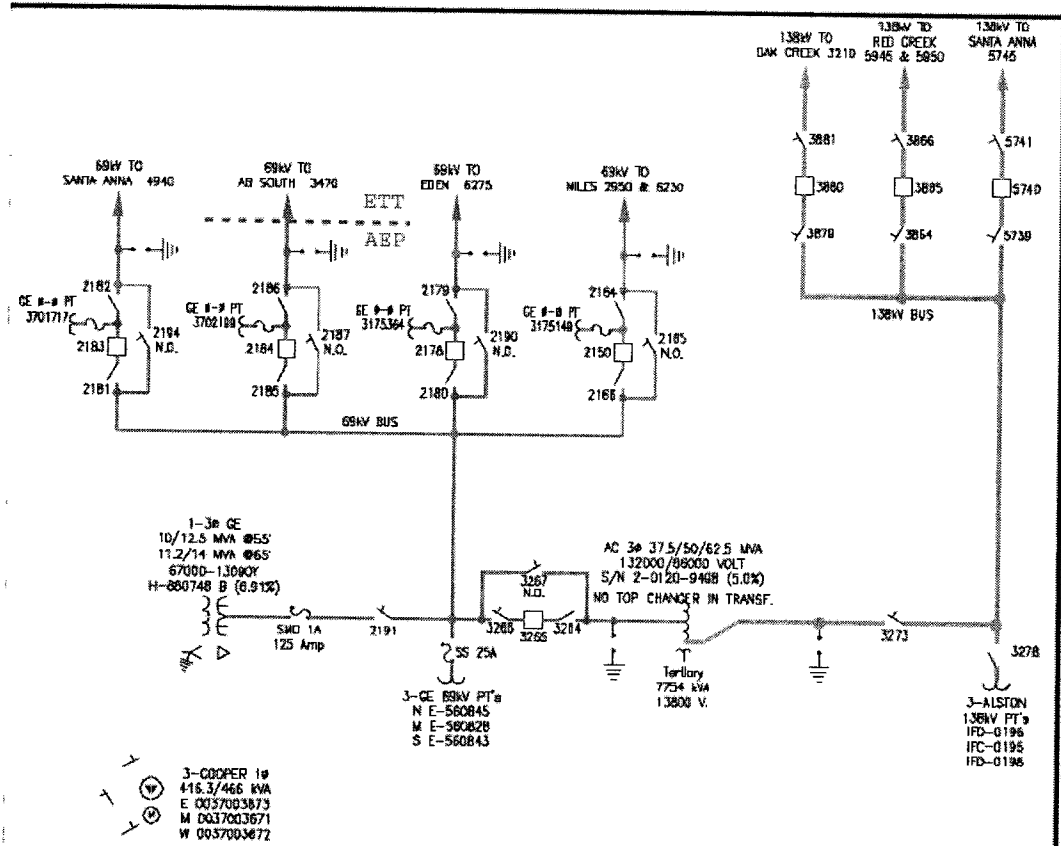
 - the 69 kV Ballinger to South Abilene transmission line

AEP owns the following facilities:

 - the Ballinger Substation and all the facilities within it
 - the conductors from the station equipment to the Ballinger – South Abilene 69 kV transmission line
7. Operational Responsibilities of Each Party:
 - Each party controls and operates all the facilities it owns that are provided for in this Facility Schedule.
 - Per the December 21, 2007 Services Agreement between ETT and American Electric Power Service Corporation, AEP or its affiliates coordinate, direct, and perform all control center and field operation activities on the facilities owned by ETT. These activities shall include, but are not limited to, switching, clearances, and outages for planned maintenance and operations, emergency service restoration, and overall coordination of such activities with ERCOT.
8. Maintenance Responsibilities of Each Party:
 - Each Party is responsible for maintenance of the facilities it owns that are provided for in this Facility Schedule.
9. Cost Responsibilities of the Parties:

- Each Party will be fully responsible for the costs and liabilities related to the facilities it owns.

10. Other Terms and Conditions: None



FACILITY SCHEDULE NO. 13

1. Name: **Matador**
2. Facility Location: The Matador Substation is located at 029 US Hwy 70 near the City of Matador, Motley County, Texas. The Point of Interconnection is located at the dead-end structures that terminate the 69 kV transmission line from the Paducah Clare Street substation where the jumper conductors from the substation equipment physically contact the connectors on the transmission line conductors.
3. Delivery Voltage: 69 kV
4. Normal Operation of Interconnection: Closed
5. One-Line Diagram Attached: Yes
6. Facility Ownership Responsibilities of the Parties:

ETT owns the following facilities:

 - the 69 kV transmission line from the Matador Substation to the Paducah Clare Street Substation

AEP owns the following facilities:

 - the Matador Substation and all the facilities within the substation
 - the conductors from the station equipment to the Matador – Paducah Clare Street 69 kV transmission line
 - the Special Protection Scheme (SPS) equipment that protects the Matador - Paducah Clare Street 69 kV transmission line
7. Operational Responsibilities of Each Party:
 - Each party controls and operates all the facilities it owns that are provided for in this Facility Schedule.
 - Per the December 21, 2007 Services Agreement between ETT and American Electric Power Service Corporation, AEP or its affiliates coordinate, direct, and perform all control center and field operation activities on the facilities owned by ETT. These activities shall include, but are not limited to, switching, clearances, and outages for planned maintenance and operations, emergency service restoration, and overall coordination of such activities with ERCOT.
8. Maintenance Responsibilities of Each Party:
 - Each Party is responsible for maintenance of the facilities it owns that are provided for in this Facility Schedule.

9. Cost Responsibilities of the Parties:

- Each Party will be fully responsible for the costs and liabilities related to the facilities it owns.

10. Other Terms and Conditions: None

FACILITY SCHEDULE NO. 14

1. Name: **Paducah Clare Street**
2. Facility Location: The Paducah Clare Street Substation is located at 805 Clare St. in the City of Paducah, Cottle County, Texas. The two (2) Points of Interconnection are within the substation located at 1) the 69 kV dead-end structure that terminates the 69 kV transmission lines from the Matador substation, and 2) the 69 kV dead-end structure that terminates the 69 kV transmission lines from the Paducah City substation, where the jumper conductors from the substation equipment physically contact the connectors on the transmission lines' conductors.
3. Delivery Voltage: 69 kV
4. Normal Operation of Interconnection: Closed
5. One-Line Diagram Attached: Yes
6. Facility Ownership Responsibilities of the Parties:

ETT owns the following facilities:

 - the 69 kV transmission line from the Paducah Clare Street Substation to the Matador Substation
 - the 69 kV transmission line from the Paducah Clare Street Substation to the Paducah City Substation

AEP owns the following facilities:

 - the Paducah Clare Street Substation and all the facilities within the Substation
 - the conductors from the station equipment to the Paducah Clare Street – Matador 69 kV transmission line
 - the conductors from the station equipment to the Paducah Clare Street – Paducah City 69 kV transmission line
 - the Special Protection Scheme (SPS) equipment located on the Paducah Clare Street – Matador 69 kV transmission line
7. Operational Responsibilities of Each Party:
 - Each party controls and operates all the facilities it owns that are provided for in this Facility Schedule.
 - Per the December 21, 2007 Services Agreement between ETT and American Electric Power Service Corporation, AEP or its affiliates coordinate, direct, and perform all control center and field operation activities on the facilities owned by ETT. These activities shall include, but are not limited to, switching, clearances,

and outages for planned maintenance and operations, emergency service restoration, and overall coordination of such activities with ERCOT.

8. Maintenance Responsibilities of Each Party:
 - Each Party is responsible for maintenance of the facilities it owns that are provided for in this Facility Schedule.
9. Cost Responsibilities of the Parties:
 - Each Party will be fully responsible for the costs and liabilities related to the facilities it owns.
10. Other Terms and Conditions: None



FACILITY SCHEDULE NO. 15

1. Name: **Paducah City**
2. Facility Location: The Paducah City Substation is located at 620 Backus St. in the City of Paducah, Cottle County, Texas. The Point of Interconnection is located at the dead-end structures that terminate the 69 kV transmission line from the Paducah Clare Street Substation where the jumper conductors from the substation equipment physically contact the connectors on the transmission line conductors.
3. Delivery Voltage: 69 kV
4. Normal Operation of Interconnection: Closed
5. One-Line Diagram Attached: Yes
6. Facility Ownership Responsibilities of the Parties:

ETT owns the following facilities:

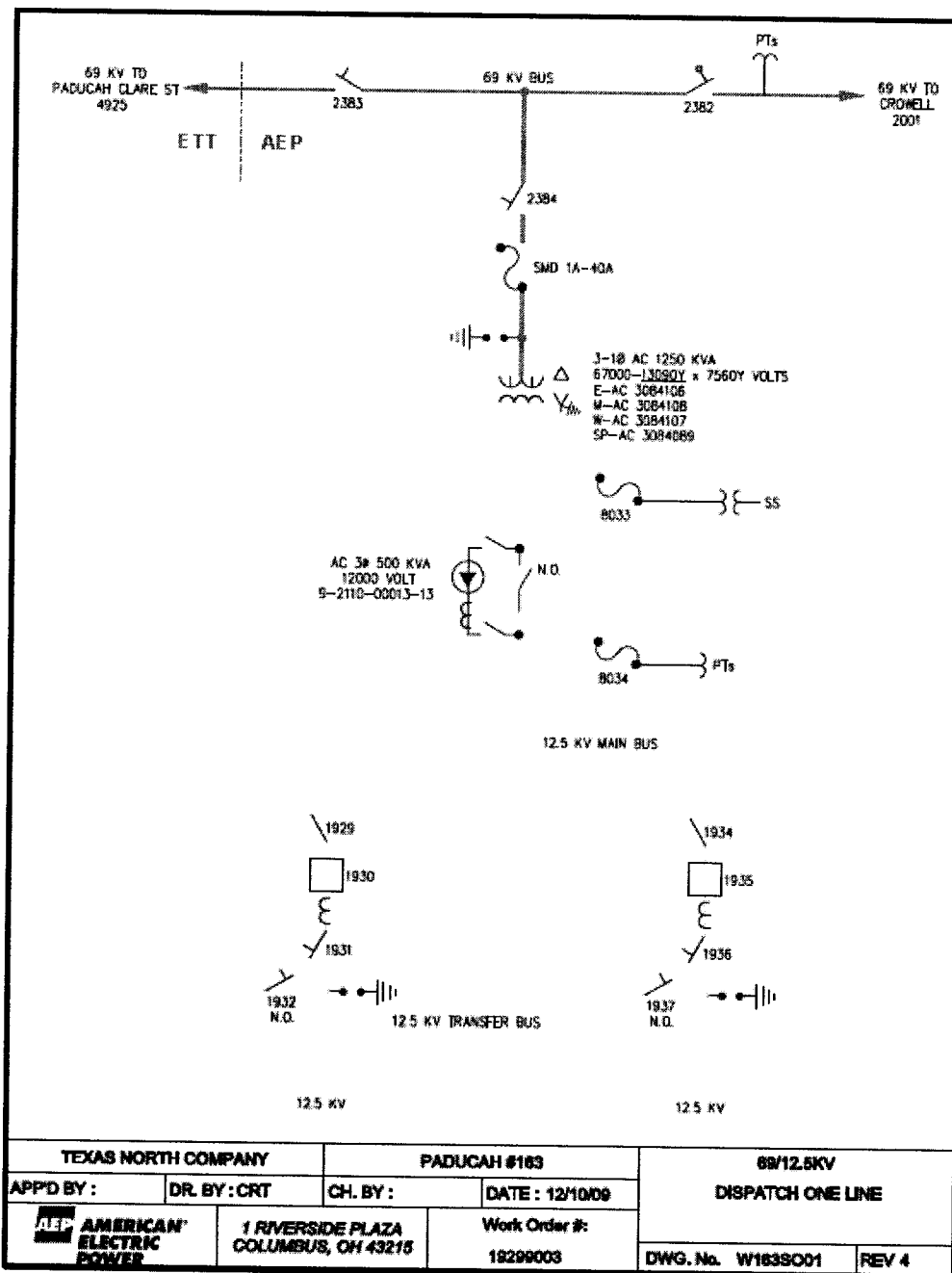
 - the 69kV transmission line from the Paducah City Substation to the Paducah Clare Street Substation

AEP owns the following facilities:

 - the Paducah City Substation and all the facilities within the substation
 - the conductors from the station equipment to the Paducah City – Paducah Clare Street 69 kV transmission line
7. Operational Responsibilities of Each Party:
 - Each party controls and operates all the facilities it owns that are provided for in this Facility Schedule.
 - Per the December 21, 2007 Services Agreement between ETT and American Electric Power Service Corporation, AEP or its affiliates coordinate, direct, and perform all control center and field operation activities on the facilities owned by ETT. These activities shall include, but are not limited to, switching, clearances, and outages for planned maintenance and operations, emergency service restoration, and overall coordination of such activities with ERCOT.
8. Maintenance Responsibilities of Each Party:
 - Each Party is responsible for maintenance of the facilities it owns that are provided for in this Facility Schedule.
9. Cost Responsibilities of the Parties:

- Each Party will be fully responsible for the costs and liabilities related to the facilities it owns.

10. Other Terms and Conditions: None



Arch A (8-1/2 X 11)

c:\pwwork\dms50816RW163ec01.dwg

FACILITY SCHEDULE NO. 16

1. Name: **Rio Pecos**
2. Facility Location: The Rio Pecos Substation is located at 26250 West Hwy 67 approximately 9 miles west of the City of McCamey, Crockett County, Texas. The five (5) Points of Interconnection are within the 69 kV Rio Pecos Substation at a) the dead end structures of the 69 kV transmission line to the McCamey substation, b) the dead end structures of the 69 kV transmission line to the Sun Valley substation, c) at the two (2) low side switches of the 138/69 kV autotransformers, and d) the 69 kV bushings of the distribution transformer in the Rio Pecos Substation
3. Delivery Voltage: 69 kV
4. Normal Operation of Interconnection: Closed
5. One-Line Diagram Attached: Yes
6. Facility Ownership Responsibilities of the Parties:

ETT owns the following facilities:

- all 69 kV transmission facilities and equipment within the Rio Pecos Substation other than Telecommunication Facilities and the stand-alone CTs on the 69kV side of the autotransformers
- the -50/+40 MVAR static VAR compensator, including the fencing surrounding it and grounding within the fence
- a dead end structure reserved for future 69 kV use
- 69 kV control house #2 structure and Shared Facilities therein, including batteries and associated protection, control, and metering equipment
- the Static VAR Compensator RTU
- the ERCOT Polled Settlement meter RTU

AEP owns the following facilities:

- the substation property, including perimeter fencing, as well as the 138 kV control house #1 structure
- 138 kV control house #1 structure and Shared Facilities therein
- all 138 kV transmission facilities and equipment within the Rio Pecos Substation including the autotransformers and all facilities and equipment functioning exclusively as protective, metering, or control devices
- all Distribution Facilities within the Rio Pecos Substation including the distribution transformer and all facilities and equipment functioning exclusively

as protective, metering, or control devices for, or in support of the operation or maintenance of Distribution Facilities (other than circuit switcher 5818)

- all Telecommunication Facilities and the stand-alone CTs on the 69kV side of the autotransformers within the Rio Pecos Substation unless specifically described above as owned by ETT
- the MAS point to point telecommunication equipment within the Rio Pecos Substation
- the station RTU
- the transmission sag monitoring RTU

7. Operational Responsibilities of Each Party:

- Each party controls and operates all the facilities it owns that are provided for in this Facility Schedule.
- Per the December 21, 2007 Services Agreement between ETT and American Electric Power Service Corporation, AEP or its affiliates coordinate, direct, and perform all control center and field operation activities on the facilities owned by ETT. These activities shall include, but are not limited to, switching, clearances, and outages for planned maintenance and operations, emergency service restoration, and overall coordination of such activities with ERCOT.

8. Maintenance Responsibilities of Each Party:

- Each Party is responsible for maintenance of the facilities it owns that are provided for in this Facility Schedule.

9. Cost Responsibilities of the Parties:

- Each Party will be fully responsible for the costs and liabilities related to the facilities it owns.

10. Other Terms and Conditions: None



FACILITY SCHEDULE NO. 17

1. Name: **Big Lake PST**
2. Facility Location: The Big Lake Substation is located at 505 S. Main Ave. in the City of Big Lake, Reagan County, Texas. The two (2) Points of Interconnection are within the Big Lake Substation at 1) the top of the west face of the northwest 138 kV box bay (TLBM dead end assembly), and 2) the dead end structures of the North McCamey 69 kV transmission line at the southeast end of the Big Lake Substation.
3. Delivery Voltage: 138 kV
4. Normal Operation of Interconnection: Closed
5. One-Line Diagram Attached: Yes
6. Facility Ownership Responsibilities of the Parties:

ETT owns the following facilities:

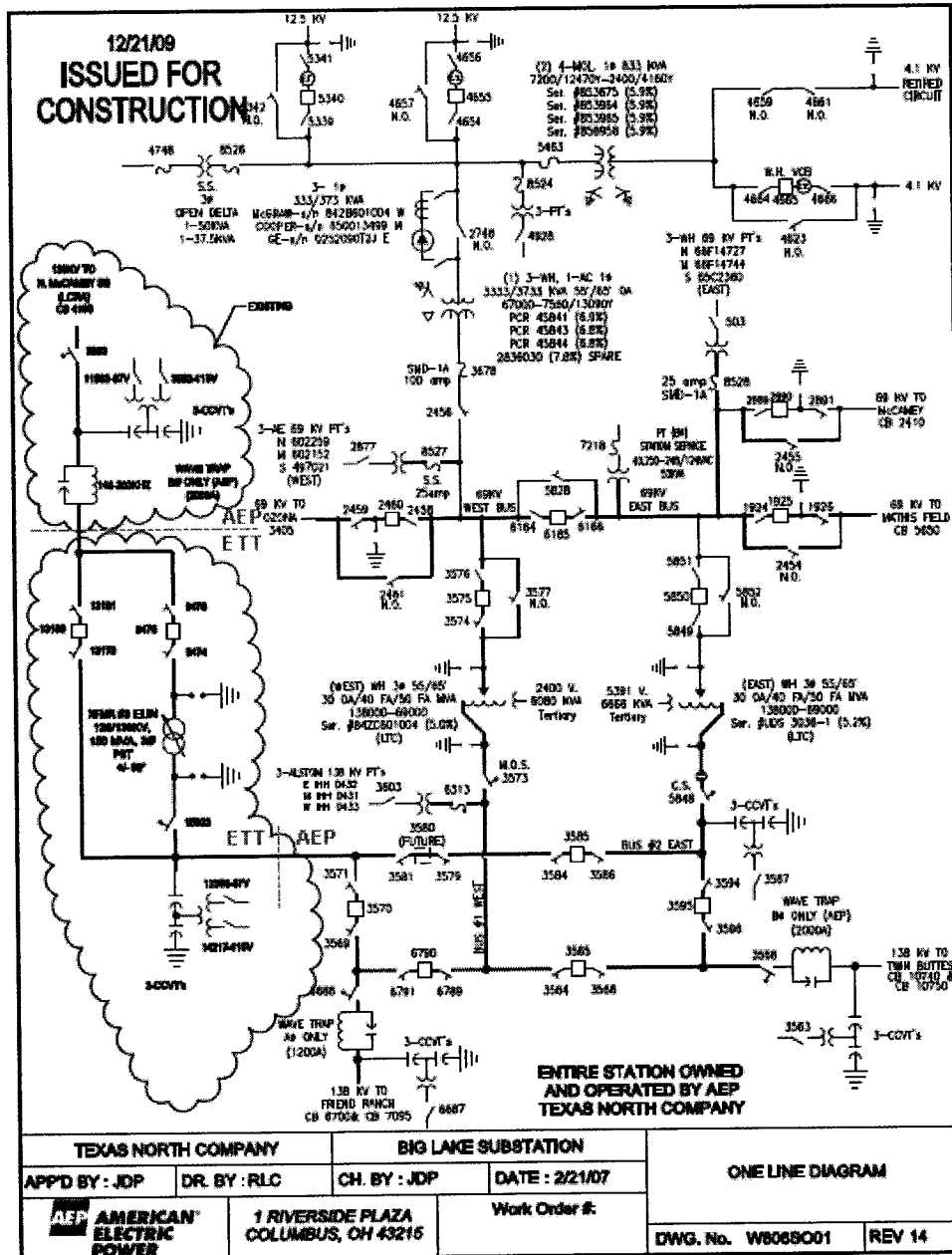
- switches 15923 (MOS), 9474, 9476, 13181 and 13179
- breakers 9475, 13180
- 150 MVA phase shifting transformer ("PST") including arrestors
- all protective, metering, or control facilities and equipment functioning exclusively as protective, metering, or control devices for, or in support of the operation or maintenance of the transmission facilities specifically described above as owned by ETT
- bus work and support structures and equipment (including grounding) associated with the facilities described above
- PST RTU

AEP owns the following facilities:

- all Telecommunication Facilities within the Big Lake Substation other than specific facilities described above as owned by ETT
- all Distribution Facilities and transmission facilities and equipment within the Big Lake Substation (unless specifically described above as owned by ETT), including the distribution and transmission transformers and all facilities and equipment functioning exclusively as protective, metering, or control devices for, or in support of the operation or maintenance of the Distribution Facilities and transmission facilities and equipment
- control house structure and Shared Facilities therein
- station RTU
- 138 kV transmission line to the N. McCamey Substation

7. Operational Responsibilities of Each Party:
 - Each party controls and operates all the facilities it owns that are provided for in this Facility Schedule.
 - Per the December 21, 2007 Services Agreement between ETT and American Electric Power Service Corporation, AEP or its affiliates coordinate, direct, and perform all control center and field operation activities on the facilities owned by ETT. These activities shall include, but are not limited to, switching, clearances, and outages for planned maintenance and operations, emergency service restoration, and overall coordination of such activities with ERCOT.
8. Maintenance Responsibilities of Each Party:
 - Each Party is responsible for maintenance of the facilities it owns that are provided for in this Facility Schedule.
9. Cost Responsibilities of the Parties:
 - Each Party will be fully responsible for the costs and liabilities related to the facilities it owns.
10. Other Terms and Conditions: None

12/21/09
ISSUED FOR
CONSTRUCTION



PROJECTWISE 8.5" x 11" A BORDER AEP CELL

\\projects\Substation\projects\113363\DD\DWG04-Elec\W8068001.dwg

11/04/2009 10:00:00 AM

FACILITY SCHEDULE NO. 18

1. Name: **Tombstone**
2. Facility Location: The Tombstone Switching Station is located in the Rio Pecos to Fort Stockton 138 kV transmission line approximately 14 miles northeast of Fort Stockton, Texas in Pecos County, near 31° 0' 9.4"N, 102° 40' 45.0"W. There are two Points of Interconnection at this location at the "box bay" transmission structure steel where the conductors from the 138 kV transmission lines from the Rio Pecos and Fort Stockton substations connect to the conductors from the motor operated line disconnect switches in the station.
3. Delivery Voltage: 138 kV
4. Normal Operation of Interconnection: Closed
5. One-Line Diagram Attached: Yes
6. Facility Ownership Responsibilities of the Parties:

ETT owns the following facilities:

- the Tombstone Switching Station, including the facilities listed below and excluding all facilities* owned by Texas New Mexico Power Company
 - fencing, station cover stone and grounding grid
 - a tubular "box bay" transmission structure in the existing Rio Pecos to Fort Stockton 138 kV transmission line
 - two (2) motor operated switches (#11817 and #6423) in the Rio Pecos to Fort Stockton 138 kV transmission line, one on each side of the tap
 - one (1) motor operated switch (#13457) to disconnect the 138 kV transmission line from the Substation
 - one (1) meter panel connected in series with TNMP's meter instrument transformers
 - one (1) remote terminal unit ("ETT RTU") and associated communication equipment for exclusive supervisory control of the motor operated switches
 - a RTU communication circuit from the Station to the ETT control center including a telephone demark located outside the Station fence
 - CCVTs and associated equipment
 - station service PT and associated equipment

* Note: Texas New Mexico Power Company owns the following facilities within the Tombstone Switching Station:

- one (1) – set of 138 kV revenue quality meter instrument transformers

- one (1) meter panel containing primary and backup revenue meters
- one (1) remote terminal unit and associated communication equipment
- one (1) radio and associated communication equipment
- one (1) 55 foot wood pole with radio antenna and associated cabling and hardware

AEP owns the following facilities:

- the Tombstone to Rio Pecos 138 kV transmission line
- the Tombstone to Fort Stockton 138 kV transmission line

7. Operational Responsibilities of Each Party:

- Each party controls and operates all the facilities it owns that are provided for in this Facility Schedule.
- Per the December 21, 2007 Services Agreement between ETT and American Electric Power Service Corporation, AEP or its affiliates coordinate, direct, and perform all control center and field operation activities on the facilities owned by ETT. These activities shall include, but are not limited to, switching, clearances, and outages for planned maintenance and operations, emergency service restoration, and overall coordination of such activities with ERCOT.

8. Maintenance Responsibilities of Each Party:

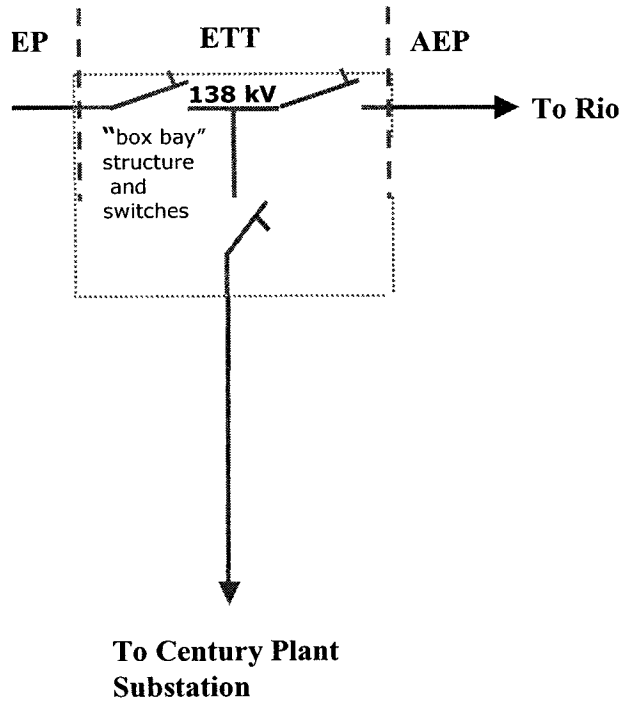
- Each Party is responsible for maintenance of the facilities it owns that are provided for in this Facility Schedule.

9. Cost Responsibilities of the Parties:

- Each Party will be fully responsible for the costs and liabilities related to the facilities it owns.

10. Other Terms and Conditions: None

Tombstone Switching Station



Texas North Company Facilities

ilities

SA
ies

FACILITY SCHEDULE NO. 19

1. Name: **Yellow Jacket**
2. Facility Location: The Yellow Jacket Substation is located in the City of Menard, Menard County, Texas approximately 1 mile north of the Menard Substation. The five Points of Interconnection are at i) the dead-end structures that terminate the 138 kV transmission lines from the Fort Mason Substation and San Angelo Power Station, the 69 kV transmission lines from the Eden Substation, Mason Switching Station and Junction Substation where the jumper conductors from the substation equipment physically contact the connectors on the transmission lines' conductors and at ii) the 69 kV bushings of the distribution transformer in the Yellow Jacket Substation.
3. Delivery Voltage: 69 kV & 138 kV
4. Normal Operation of Interconnection: Closed
5. One-Line Diagram Attached: Yes
6. Facility Ownership Responsibilities of the Parties:

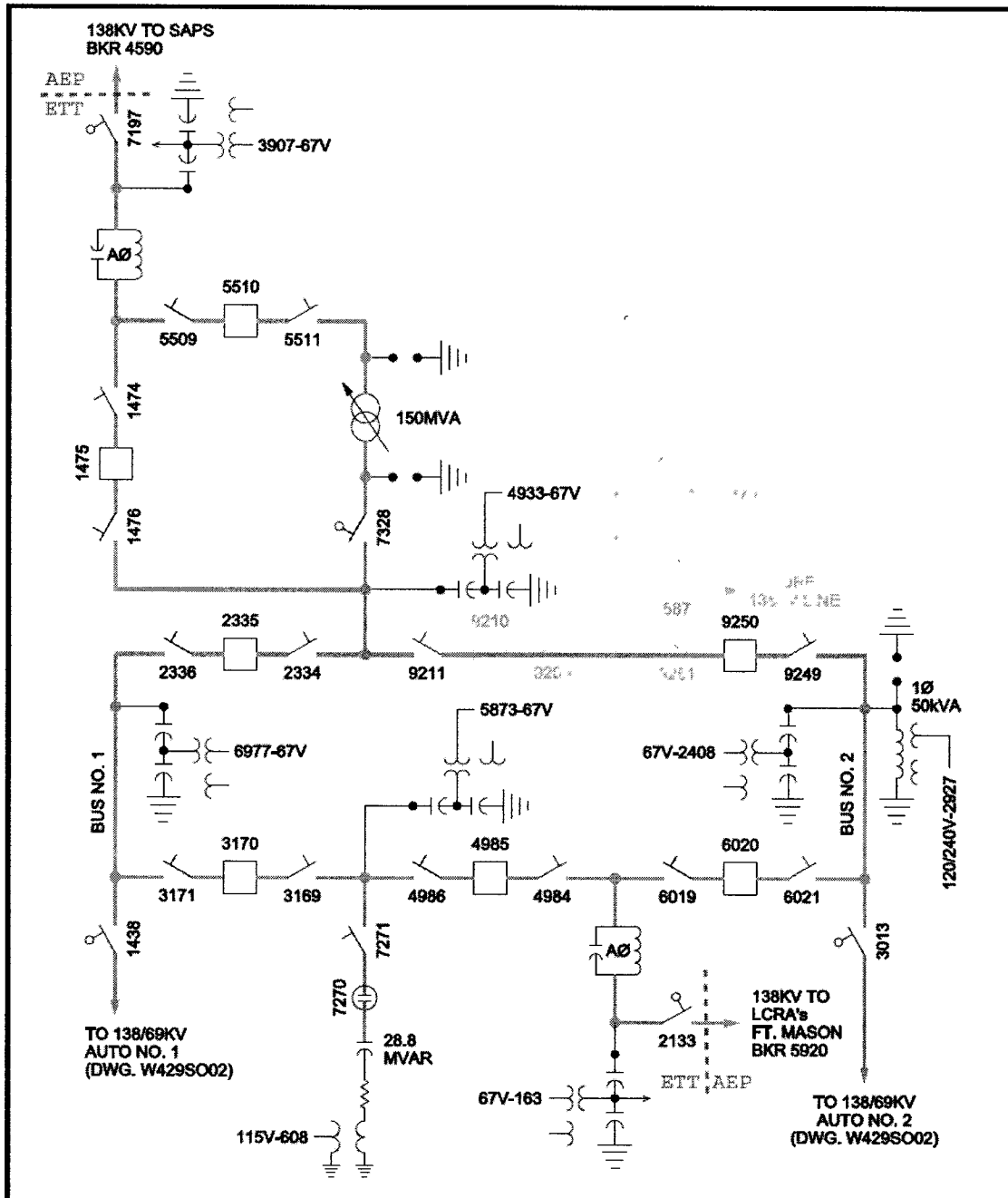
ETT owns the following facilities unless expressly described as footprint facilities below:

- all transmission facilities other than Telecommunication Facilities in the 138kV Yellow Jacket Substation and the 69kV Yellow Jacket Substation between and including the substation dead-end structures to which are attached i) the 138kV transmission lines to the LCRA Fort Mason Substation and San Angelo Power Station, ii) the 69kV transmission lines to the Eden Substation, Mason Switching Station and Junction Substation via the Menard Phillips Substation and iii) the 69kV bushings of the distribution transformer in the Yellow Jacket Substation (which bushings are owned by AEP)
- the substation property, including perimeter fencing, as well as the control house structure within the Yellow Jacket Substation
- one (1) RTU for the phase shift transformer
- all protective, metering, or control facilities and equipment in the Yellow Jacket Substation not functioning exclusively as protective, metering, or control devices for, or in support of the operation or maintenance of Distribution Facilities

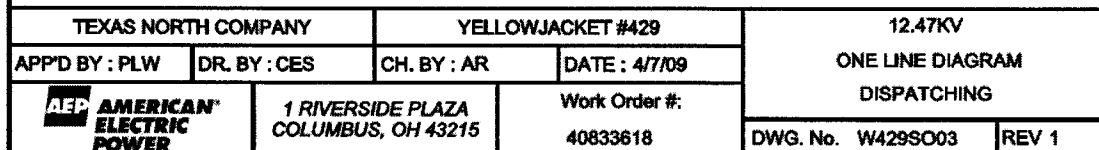
AEP owns the following facilities:

- the 138kV transmission line from the Yellow Jacket Substation to the San Angelo Power Station
- the 138kV transmission line from the Yellow Jacket Substation to the Fort Mason Substation

- the 69kV transmission line from the Yellow Jacket Substation to the Eden Substation
 - the 69kV transmission line from the Yellow Jacket Substation to the Mason Substation
 - the 69kV transmission line from the Yellow Jacket Substation to the Junction Substation via the Menard Phillips Substation
 - all Distribution Facilities including all metering, or control facilities and equipment in the Yellow Jacket Substation functioning exclusively as protective, metering, or control devices for, or in support of the operation or maintenance of Distribution Facilities (other than circuit switcher 9125)
 - one (1) station RTU
 - one (1) wireless remote communication device
 - protection and control equipment for AEP facilities
 - the following footprint facilities within the ground grid boundary of the Yellow Jacket Substation:
 - station service transformer if energized by Distribution Facilities
 - instrument transformers if energized by Distribution Facilities
 - ground grid
 - foundations
 - cable tray, trench or raceway or conduit bank
 - lighting
 - lightning rods and statics
 - spill prevention and retention facilities
7. Operational Responsibilities of Each Party:
- Each party controls and operates all the facilities it owns that are provided for in this Facility Schedule.
 - Per the December 21, 2007 Services Agreement between ETT and American Electric Power Service Corporation, AEP or its affiliates coordinate, direct, and perform all control center and field operation activities on the facilities owned by ETT. These activities shall include, but are not limited to, switching, clearances, and outages for planned maintenance and operations, emergency service restoration, and overall coordination of such activities with ERCOT.
8. Maintenance Responsibilities of Each Party:
- Each Party is responsible for maintenance of the facilities it owns that are provided for in this Facility Schedule.
9. Cost Responsibilities of the Parties:
- Each Party will be fully responsible for the costs and liabilities related to the facilities it owns.
10. Other Terms and Conditions: None



| | | | | | |
|-----------------------------------|--------------|---|----------------|-------------------|-------|
| TEXAS NORTH COMPANY | | YELLOWJACKET #429 | | 138KV | |
| APP'D BY : BGB | DR. BY : BGB | CH. BY : BGB | DATE : 8/20/09 | ONE LINE DIAGRAM | |
| AEP AMERICAN ELECTRIC POWER | | 1 RIVERSIDE PLAZA COLUMBUS, OH 43215 | | DISPATCHING | |
| | | Work Order #: 40833618 | | DWG. No. W429SO01 | REV 3 |



FACILITY SCHEDULE NO. 20

1. Name: **West Childress**
2. Facility Location: The West Childress Substation is located at 1400 Ave H SW in the City of Childress, Childress County, Texas. The Point of Interconnection is located at the Substation dead-end where the jumpers from the Substation equipment connect to the terminating transmission line from Henry substation.
3. Delivery Voltage: 69 kV
4. Normal Operation of Interconnection: Closed
5. One-Line Diagram Attached: Yes
6. Facility Ownership Responsibilities of the Parties:

ETT owns the following facilities:

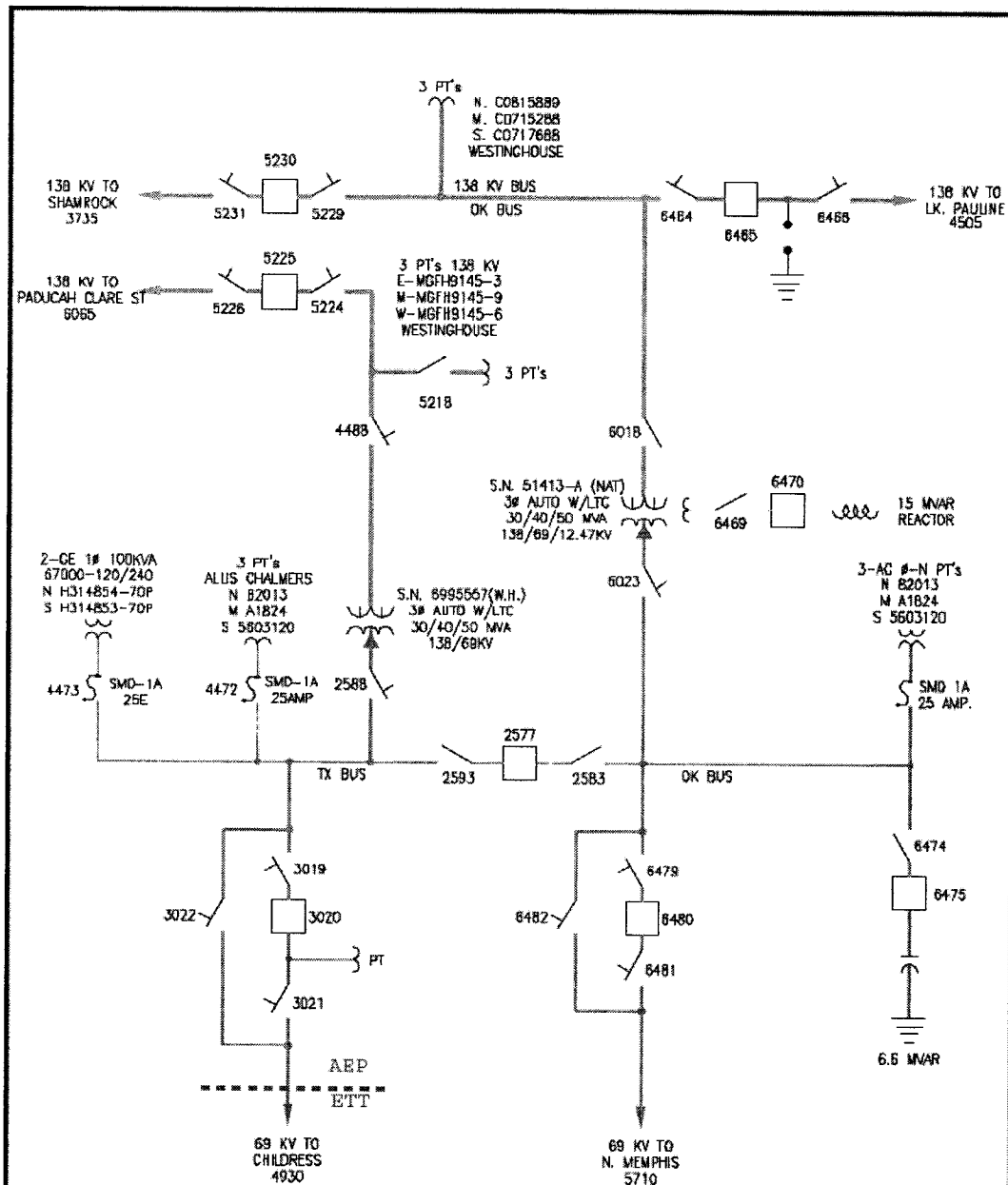
 - the 69 kV transmission line from the West Childress Substation to the Henry substation

AEP owns the following facilities:

 - the West Childress Substation and all the facilities within the Substation
 - the conductors from the station equipment to the West Childress Substation – Henry 69 kV transmission line
7. Operational Responsibilities of Each Party:
 - Each party controls and operates all the facilities it owns that are provided for in this Facility Schedule.
 - Per the December 21, 2007 Services Agreement between ETT and American Electric Power Service Corporation, AEP or its affiliates coordinate, direct, and perform all control center and field operation activities on the facilities owned by ETT. These activities shall include, but are not limited to, switching, clearances, and outages for planned maintenance and operations, emergency service restoration, and overall coordination of such activities with ERCOT.
8. Maintenance Responsibilities of Each Party:
 - Each Party is responsible for maintenance of the facilities it owns that are provided for in this Facility Schedule.
9. Cost Responsibilities of the Parties:

- Each Party will be fully responsible for the costs and liabilities related to the facilities it owns.

10. Other Terms and Conditions: None



WEST TEXAS UTILITIES



WEST CHILDRESS #849 - N.CENTRAL DIV.

DRFT. JLV

ENG.

APP.

DATE: 5/30/02

DWG. NO. W849S001

REV

1

FACILITY SCHEDULE NO. 21

1. Name: **Childress 20th Street**
2. Facility Location: The Childress 20th Street Substation is located at 1911 Ave. H in the City of Childress, Childress County, Texas. The Point of Interconnection is located at the Substation dead-end structure where the jumpers from the Substation equipment connect to the terminating 69 kV transmission line from Brazos Electric Cooperative's Henry Substation.
3. Delivery Voltage: 69 kV
4. Normal Operation of Interconnection: Closed
5. One-Line Diagram Attached: Yes
6. Facility Ownership Responsibilities of the Parties:

ETT owns the following facilities:

 - the 69kV line from Childress 20th Street Substations to the Henry Substation

AEP owns the following facilities:

 - all transmission and Distribution Facilities within the Childress 20th Street Substation.
 - all structures including the 1/1-tap structure on the Childress 20th Street to Childress 69 kV transmission line
 - two (2) 69 kV switches, #12803 and #14408 associated with the 1/1-tap structure
7. Operational Responsibilities of Each Party:
 - Each party controls and operates all the facilities it owns that are provided for in this Facility Schedule.
 - Per the December 21, 2007 Services Agreement between ETT and American Electric Power Service Corporation, AEP or its affiliates coordinate, direct, and perform all control center and field operation activities on the facilities owned by ETT. These activities shall include, but are not limited to, switching, clearances, and outages for planned maintenance and operations, emergency service restoration, and overall coordination of such activities with ERCOT.
8. Maintenance Responsibilities of Each Party:
 - Each Party is responsible for maintenance of the facilities it owns that are provided for in this Facility Schedule.

9. Cost Responsibilities of the Parties:
- Each Party will be fully responsible for the costs and liabilities related to the facilities it owns.
10. Other Terms and Conditions: None

