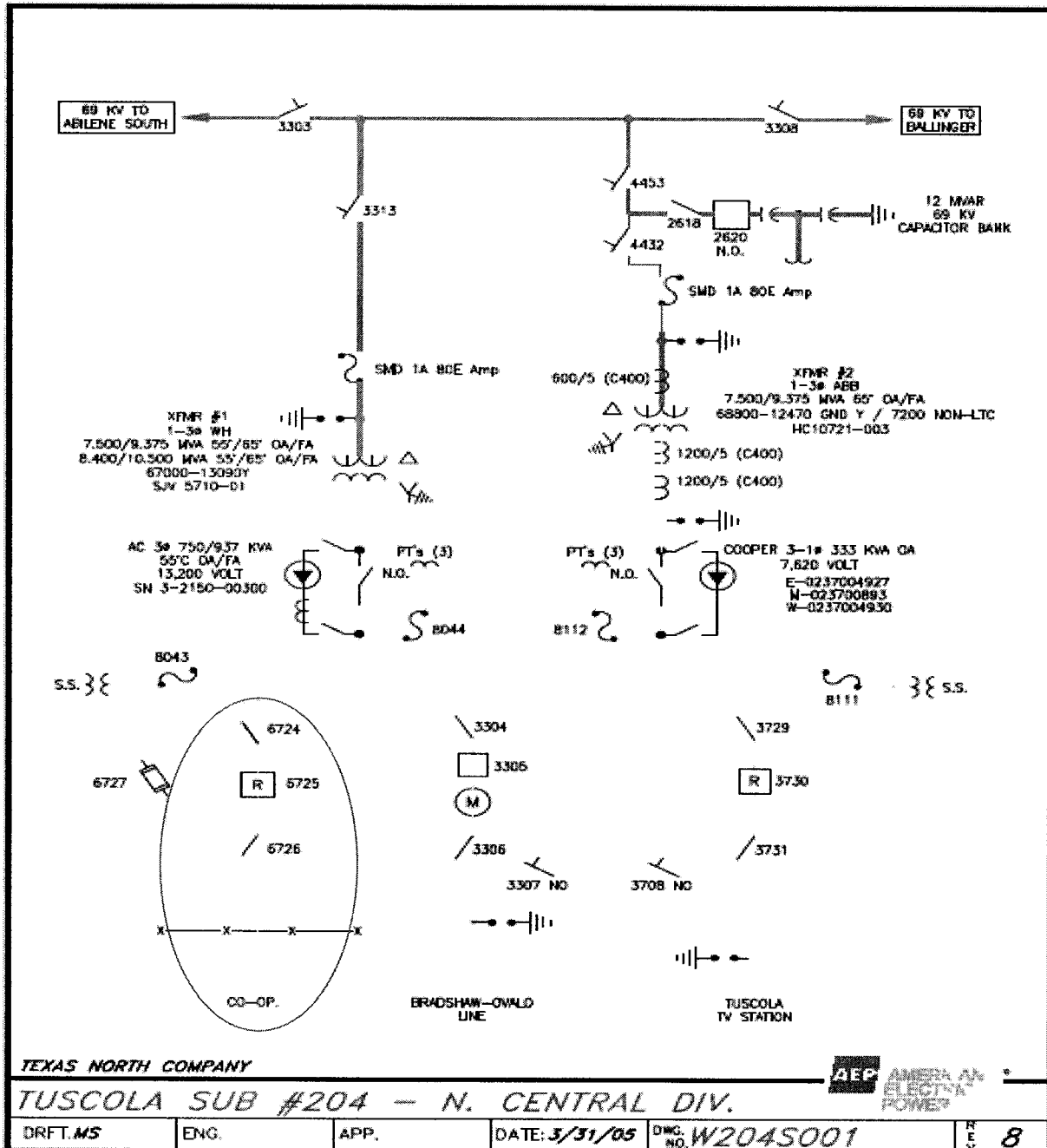


FACILITY SCHEDULE NO. 15

1. Name: **Tuscola**
2. Facility Location: Point of Interconnection is at Company's Tuscola substation, Taylor County
3. Voltage at Point of Interconnection: 12.5 kV
4. Metered Voltage: 12.5 kV
5. Loss Adjustment Due To Meter Location: No
6. Norman Operation of Interconnection: Closed
7. One-Line Diagram Attached: Yes
8. Description of Facilities Installed and Owned by Each Party:
9. Operation Responsibilities of Each Party:
 - See Operating Agreement for Tuscola Cooperative Point of Delivery July 2, 1999 (AFTER ONE-LINE DIAGRAM BELOW).
10. Maintenance Responsibilities of Each Party:
 - Each Party maintains the facilities it owns.
11. Maximum Contract Demand: 1,500 kW
12. Other Terms and Conditions:





CSW Transmission & Distribution Operations
Dispatch Operations - WTU

Subject: Taylor Electric Co-op – Tuscola Point of Delivery Operating Procedure

**OPERATING AGREEMENT FOR TUSCOLA TEC POINT OF DELIVERY
July 2, 1999 (superseeds all previous operating agreements)**

TAYLOR ELECTRIC COOPERATIVE

1. Taylor Electric Cooperative (TEC) shall have access to West Texas Utilities Company's (WTU) Tuscola Substation to operate OCR 6725 and line-side disconnect 6726. The fused bypass switch 6727 shall not be operated without the WTU Dispatch Operations Dispatchers permission.
2. TEC may operate OCR 6725 using the operator on the recloser.
3. If TEC closes the recloser after the recloser is locked out, WTU's Dispatch Operations Dispatcher shall be notified in a timely manner.
4. TEC may operate line-side disconnect switch 6726 after obtaining switching instructions from WTU's Dispatch Operations.
5. If TEC takes a planned clearance on this circuit, WTU's Dispatch Operations shall be notified in advance of the clearance.
6. TEC shall notify WTU's Dispatch Operations of the times when a switch or recloser in the substation was operated.

WEST TEXAS UTILITIES COMPANY

1. WTU shall notify TEC of any planned outages or work at the Tuscola Substation prior to the time that work is to be done.
2. WTU shall not close OCR 6725 to pick up load without specific instructions from TEC to do so.
3. WTU shall make provisions for TEC to access the Tuscola Substation via dual locks to the gate.

Subject: Taylor Electric Co-op – Tuscola Point of Delivery Operating Procedure

**OPERATING AGREEMENT FOR TUSCOLA TEC POINT OF DELIVERY
July 2, 1999 (supersedes all previous operating agreements)**

IN WITNESS WHEREOF, COMPANY and Customer have caused this Agreement to be executed in duplicate in their names by their respective duly authorized representatives as of the date and year first above written.

TAYLOR ELECTRIC COOPERATIVE, INC.

CUSTOMER
ATTEST:

Alonna Brumback

By: Tommy Cutler
General Manager

WEST TEXAS UTILITIES COMPANY

COMPANY
ATTEST:

Marsha Murray

By: David L. Frazier P.E.
Director, Transmission & Distribution
Operations

FACILITY SCHEDULE NO. 16

1. Name: **Kirby**
2. Facility Location: The Point of Interconnection (32-22-49.33N, 99-44-55.79W) is located in Taylor County, Texas in the city limits of Abilene on the west side of Memorial Drive south of Covenant Drive.
3. Voltage at Point of Interconnection: 12.5 kV
4. Metered Voltage 12.5 kV
5. Loss Adjustment Due To Meter Location: No
6. Normal Operation of Interconnection: Closed
7. One-Line Diagram Attached: Yes
8. Description of Facilities Installed and Owned by Each Party:

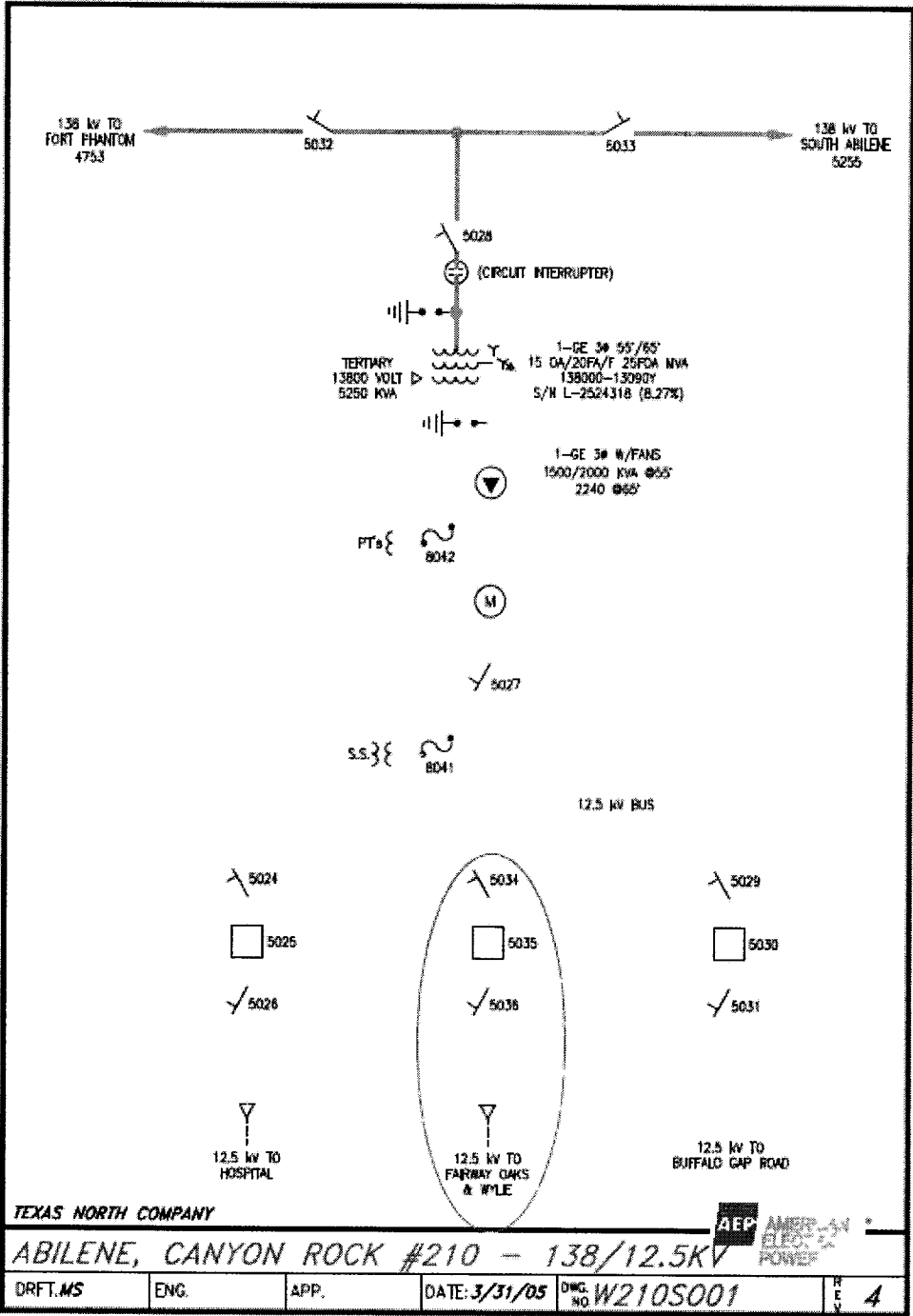
Company's Facilities:
 - approximately 600 feet of 3-phase, 12.5 kV overhead distribution line
 - one (1) wood poles
 - 3-phase gang operated switch
 - 12 kV primary meter
 - Canyon Rock Substation #210, Feeder #5035
Cooperative's Facilities:
 - 3-phase electronic recloser
9. Operational Responsibilities of Each Party:

Each Party controls and operates the facilities it owns.
10. Maintenance Responsibilities of Each Party:

Each Party maintains the facilities it owns.
11. Maximum Contract Demand: 1500 kW

12. Other Terms and Conditions:

Cooperative recognizes that Company is installing the Facilities described hereinabove to facilitate Cooperative's request for a new Point of Interconnection to be provided by this Agreement. If Cooperative cancels its request for this Point of Interconnection prior to energizing this Point of Interconnection because the Facilities are not required, Cooperative agrees to pay the actual installed costs incurred and committed to be incurred by Company, and the actual costs of removal of the Company material and equipment. The total installed cost of the Company Facilities described hereinabove is estimated to be sixteen thousand five hundred dollars (\$16,500) which Cooperative agrees is reasonable. In the event Cooperative terminates this Point of Interconnection in accordance with Section 4.5, Cooperative shall pay Company the depreciated book value plus removal cost less salvage value of such facilities used to supply Cooperative, or Cooperative may purchase such facilities at depreciated book value provided Cooperative removes or otherwise disconnects such facilities from a direct connection to the Company system. << note: this could change based on changes in 4.12 and 4.13 >.



Kirby Point of Interconnection

