



Control Number: 35077



Item Number: 216

Addendum StartPage: 0

Project No. 35077

First Amendment to

INTERCONNECTION AGREEMENT

Between

City of Luling

and

LCRA Transmission Services Company

December 1, 2009

**FIRST AMENDMENT TO
INTERCONNECTION AGREEMENT**

This First Amendment ("Amendment") is made and entered into this 1st day of December, 2009, between the City of Luling ("City") and the LCRA Transmission Services Corporation ("Corporation"), collectively referred to hereinafter as the Parties.

WHEREAS, the Corporation and the City entered into that certain Interconnection Agreement executed July 8, 2008 and

WHEREAS, the Corporation removed the total circuit breakers LC-50 and LC-80 and replaced them with switches LC-55 and LC-85

NOW, THEREFORE, in consideration of the mutual promises and undertakings herein set forth, the Parties agree to amend the Agreement as follows:

1. Exhibit "A" attached to the Agreement is deleted in its entirety and the Exhibit "A" attached to this First Amendment is hereby added to the Agreement in lieu thereof.
2. Facility Schedule No. 1 (including the diagrams attached thereto) is deleted in its entirety and Facility Schedule No. 1 attached to this First Amendment is hereby added to the Agreement in lieu thereof.
3. Facility Schedule No. 1 (including the diagrams attached thereto) attached to this First Amendment will become effective upon execution of this First Amendment by the Parties.

Except as otherwise expressly provided for herein, the Agreement will continue in full force and effect in accordance with its terms.

---The remainder of this page has intentionally been left blank. ---

IN WITNESS WHEREOF, the Parties have caused this First Amendment to be executed in several counterparts, each of which shall be deemed an original but all shall constitute one and the same instrument.

CITY OF LULING

By: Robert W. Berger

Name: Robert W. Berger

Title: City Manager

Date: 12/1/2009

LCRA TRANSMISSION SERVICES
CORPORATION

By: Ray Pfefferkorn

Name: Ray Pfefferkorn, P.E.

Title: LCRA Transmission Engineering
Manager

Date: 11/5/09



First Amendment
EXHIBIT A

[illegible]

**First Amendment
FACILITY SCHEDULE NO. 1**

1. **Name:** Luling City Substation
2. **Facility Location:** The Luling City Substation is located at 1795 N. Hackberry Street, Luling, Caldwell County, Texas.
3. **Points of Interconnection:** There are six (6) Points of Interconnection in the Luling City Substation generally described as:
 - where the incoming distribution line connects to the tubular bus between switches LC-31 and LC-33 at breaker LC-30.
 - where the jumper from breaker LC-30, passing through CT-11, connects to the 4 hole pad on switch LC-29.
 - where the jumper from breaker LC-30 connects to the 4 hole pad on switch LC-31.
 - where the incoming distribution line connects to the tubular bus between switches LC-91 and LC-93 at breaker LC-90.
 - where the jumper from breaker LC-90, passing through CT-16, connects to the 4 hole pad on switch LC-89.
 - where the jumper from breaker LC-90 connects to the 4 hole pad on switch LC-91.
4. **Transformation Services Provided by LCRA TSC:** Yes
5. **Metering Services Provided by LCRA TSC:** Yes
6. **Delivery Voltage:** 12.5 kV
7. **Metered Voltage and Location:** The metered voltage is 12.5 kV. The metering current transformers are located in each feeder bay. The metering potential transformers for PWT-1 and PWT-2 are located on the respective 12.5 kV operating buses.
8. **One Line Diagram Attached:** Yes
9. **Description of Facilities Owned by Each Party:**

City of Luling owns:

 - Two (2) distribution circuits including dead-end insulators that attach to the dead-end structures, conductor, and associated hardware
 - Two (2) distribution circuit breakers LC-30 and LC-90, and associated foundations and jumpers

LCRA TSC owns:

The Luling Substation including, but not limited to, the following items:

- Two (2) power transformers PWT-1, T-2 and PWT-2, T-3 with associated surge arresters
- Two (2) circuit switchers CS-3665 and CS-3675
- Two (2) transformer bus disconnect switches LC-55 and LC-85
- Four (4) distribution and total bays including A-frames, trusses, insulators, disconnect switches, surge arresters, 12.5 kV operating and transfer bus, bus potential transformers, and metering current transformers
- Underfrequency relay panel
- Station Service equipment
- Control house with battery.

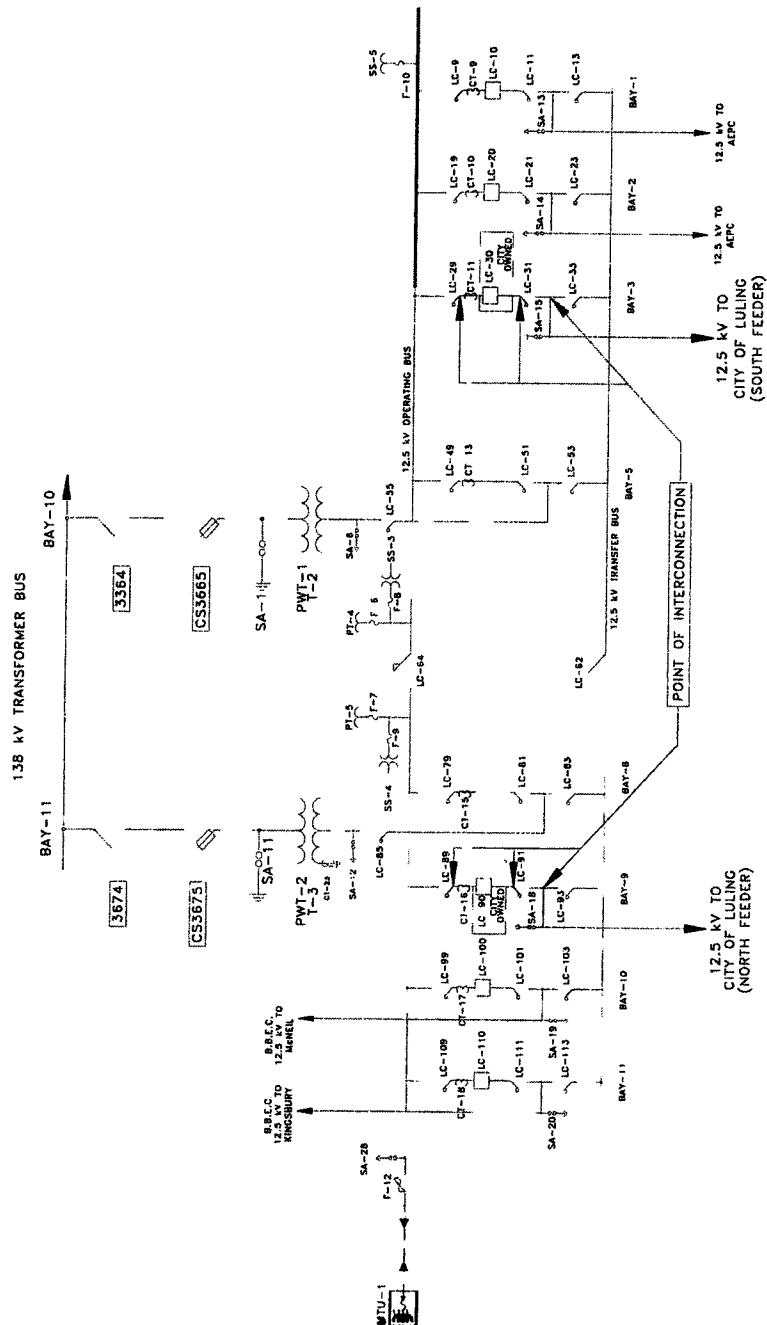
10. Operational Responsibilities of Each Party:

- The City will be responsible for the operation of the two (2) distribution circuit breakers serving the City feeders.
- LCRA TSC will be responsible for the operation from the low voltage total breaker through the power transformer to the high voltage equipment.

11. Maintenance Responsibilities of Each Party: Each Party will be fully responsible for the maintenance of the equipment it owns.

12. Other Terms and Conditions: The City and LCRA TSC are to share access to the substation by LCRA TSC locks in the gate and in the control house doors.

First Amendment **LULING CITY ONE-LINE DIAGRAM**



LULING CITY SUBSTATION
THIS IS NOT A COMPLETE ONE-LINE DIAGRAM

FOR A COMPLETE ONE-LINE DIAGRAM OF THIS
 SUBSTATION, REFER TO DWG. S156-E-1.