



Control Number: 35077



Item Number: 214

Addendum StartPage: 0

Project No. 35077

First Amendment to
INTERCONNECTION AGREEMENT
Between
City of Seguin
and
LCRA Transmission Services Company

January 6, 2010

**FIRST AMENDMENT TO
INTERCONNECTION AGREEMENT**

This First Amendment ("Amendment") is made and entered into this 31st day of December, 2009, between the City of Seguin ("City") and the LCRA Transmission Services Corporation ("Corporation") collectively referred to hereinafter as the Parties.

WHEREAS, the Corporation and the City entered into that certain Interconnection Agreement executed October 17, 2008 and

WHEREAS, the City notified the Corporation of its intent to install wireless local area network (WIFI) equipment at the Seguin, Seguin West and Cushman substations and

WHEREAS, the Corporation agreed to the installation of certain WIFI antennas and associated electronics onto some of its structures as further described in the attached Facility Schedules and

WHEREAS, CTs 5-7 and 12-15 at Seguin Substation were inadvertently excluded from the Interconnection Agreement executed October 17, 2008

NOW, THEREFORE, in consideration of the mutual promises and undertakings herein set forth, the Parties agree to amend the Agreement as follows:

1. Exhibit "A" attached to the Agreement is deleted in its entirety and the Exhibit "A" attached to this First Amendment is hereby added to the Agreement in lieu thereof.
2. Facility Schedule No. 1 (including the diagrams attached thereto) is deleted in its entirety and Facility Schedule No. 1 attached to this First Amendment is hereby added to the Agreement in lieu thereof.
3. Facility Schedule No. 1 (including the diagrams attached thereto) attached to this First Amendment will become effective upon execution of this First Amendment by the Parties.
4. Facility Schedule No. 2 (including the diagrams attached thereto) is deleted in its entirety and Facility Schedule No. 2 attached to this First Amendment is hereby added to the Agreement in lieu thereof.
5. Facility Schedule No. 2 (including the diagrams attached thereto) attached to this First Amendment will become effective upon execution of this First Amendment by the Parties.
6. Facility Schedule No. 3 (including the diagrams attached thereto) is deleted in its entirety and Facility Schedule No. 1 attached to this First Amendment is hereby added to the Agreement in lieu thereof.
7. Facility Schedule No. 3 (including the diagrams attached thereto) attached to this First Amendment will become effective upon execution of this First Amendment by the Parties.

Except as otherwise expressly provided for herein, the Agreement will continue in full force and effect in accordance with its terms.

IN WITNESS WHEREOF, the Parties have caused this First Amendment to be executed in several counterparts, each of which shall be deemed an original but all shall constitute one and the same instrument.

CITY OF SEGUIN

By: *Douglas Faseler*

Name: Douglas Faseler

Title: City Manager

Date: 1-6-10

LCRA TRANSMISSION SERVICES
CORPORATION

By: *Ray Pfefferkorn*

Name: Ray Pfefferkorn, P.E.

Title: LCRA Transmission Engineering
Manager

Date: 11/5/09



EXHIBIT A
First Amendment

[illegible]

FACILITY SCHEDULE NO. 1
First Amendment

1. **Name:** Cushman Substation
2. **Facility Location:** The Cushman Substation is located at 1313 E. College St., Seguin, Guadalupe County, Texas.
3. **Points of Interconnection:** There are nine (9) Points of Interconnection in the Cushman Substation generally described as:
 - where the incoming distribution line connects to the tubular bus between switches CS-21 and CS-23 at breaker CS-20.
 - where the jumper from breaker CS-20 connects to the 4 hole pad on switch CS-19.
 - where the jumper from breaker CS-20 connects to the 4 hole pad on switch CS-21.
 - where the incoming distribution line connects to the tubular bus between switches CS-31 and CS-33 at breaker CS-30.
 - where the jumper from breaker CS-30 connects to the 4 hole pad on switch CS-29.
 - where the jumper from breaker CS-30 connects to the 4 hole pad on switch CS-31.
 - where the incoming distribution line connects to the tubular bus between switches CS-41 and CS-43 at breaker CS-40.
 - where the jumper from breaker CS-40 connects to the 4 hole pad on switch CS-39.
 - where the jumper from breaker CS-40 connects to the 4 hole pad on switch CS-41.
4. **Transformation Services Provided by LCRA TSC:** Yes
5. **Metering Services Provided by LCRA TSC:** Yes
6. **Delivery Voltage:** 12.5 kV
7. **Metered Voltage and Location:** The metered voltage is 12.5 kV. The metering current transformers are located in the metering bay. The metering potential transformer is located on the operating bus.
8. **One Line Diagram Attached:** Yes
9. **Description of Facilities Owned by Each Party:**

City of Seguin owns:

- Three (3) distribution circuit breakers CS-20, CS-30 and CS-40 with foundations, jumpers and protective relaying
- Three (3) distribution circuits with surge arresters

LCRA TSC owns:

- The site (property), including site work, fence, foundations, and ground grid
- One (1) 138 kV circuit switcher CS-4305 with disconnect switch 4304
- One (1) power transformer PWT-1, T-1 with associated surge arresters
- Four (4) distribution and total bays including A-frames, trusses, insulators, disconnect switches, 12.5 kV operating and transfer bus, bus potential transformers, and metering current transformers
- Underfrequency relay panel
- Station Service equipment
- Control house with batteries

10. Operational Responsibilities of Each Party:

- The City will be responsible for the operation of the three (3) distribution circuit breakers serving the City feeders.
- LCRA TSC will be responsible for the operation from the metering current transformers through the power transformer to the high voltage equipment.

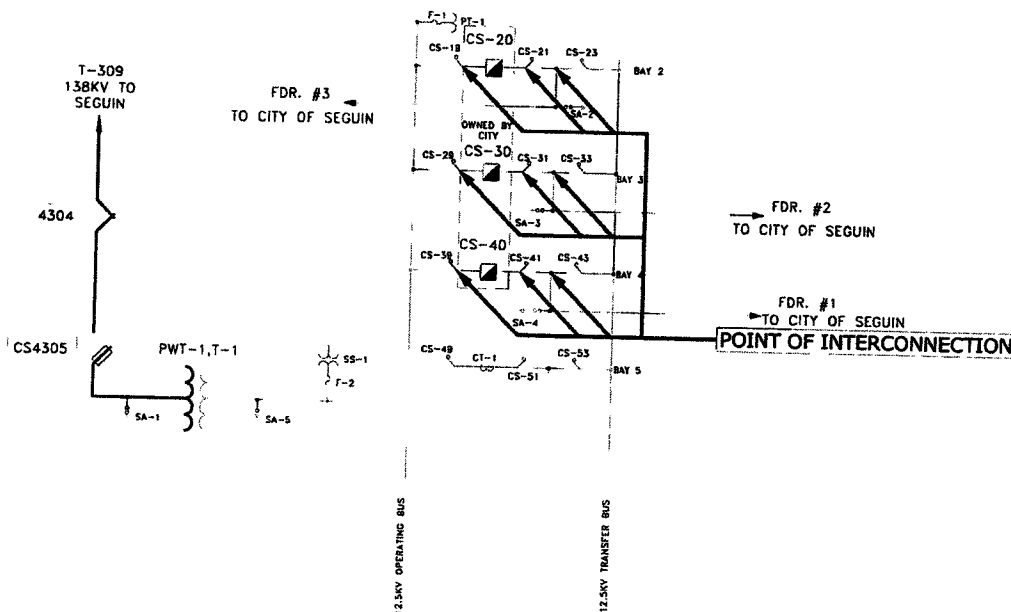
11. Maintenance Responsibilities of Each Party: Each Party will be fully responsible for the maintenance of the equipment it owns.

12. Other Terms and Conditions:

- The City and LCRA TSC are to share access to the substation by LCRA TSC locks in the gate and in the control house doors.
- The City is permitted to install, operate and maintain, a Strix model 82-2195 antenna and associated electronics at approximately 45 foot elevation onto a pole to be installed by the City, operating at a transmit frequency of 5.725 Mhz and a receive frequency of 5.85 Mhz under the following conditions:
 - The City installation is reviewed and approved by LCRA TSC prior to installation.
 - The City installation does not interfere with LCRA TSC operations.
 - The City installation is for the sole purpose of electric utility operations associated with the substation and the City's distribution equipment.
 - The City of Seguin will install, or have installed, at its sole expense a pole on the north side of the control house between the control house and College Street away from the bus work and transformer to which it will mount its WIFI antenna and associated electronics.

CUSHMAN ONE-LINE DIAGRAM

First Amendment



CUSHMAN SUBSTATION

THIS IS NOT A COMPLETE ONE-LINE DIAGRAM

FOR A COMPLETE ONE-LINE DIAGRAM OF THIS
SUBSTATION, REFER TO DWG. S258-E-2.

FACILITY SCHEDULE NO. 2
First Amendment

1. **Name:** Seguin Substation
2. **Facility Location:** The Seguin Substation is located at 806 E. Martindale Drive, Seguin, Guadalupe County, Texas.
3. **Points of Interconnection:** There are twenty one (21) Points of Interconnection in the Seguin Substation generally described as:
 - where the incoming distribution line connects to the tubular bus between switches SE-21 and SE-23 at breaker SE-20.
 - where the jumper from breaker SE-20, passing through CT-5, connects to the 4 hole pad on switch SE-19.
 - where the jumper from breaker SE-20 connects to the 4 hole pad on switch SE-21.
 - where the incoming distribution line connects to the tubular bus between switches SE-31 and SE-33 at breaker SE-30.
 - where the jumper from breaker SE-30, passing through CT-6, connects to the 4 hole pad on switch SE-29.
 - where the jumper from breaker SE-30 connects to the 4 hole pad on switch SE-31.
 - where the incoming distribution line connects to the tubular bus between switches SE-41 and SE-43 at breaker SE-40.
 - where the jumper from breaker SE-40, passing through CT-7, connects to the 4 hole pad on switch SE-39.
 - where the jumper from breaker SE-40 connects to the 4 hole pad on switch SE-41.
 - where the incoming distribution line connects to the terminal pad of switch SE-81 at breaker SE-80.
 - where the jumper from breaker SE-80, passing through CT-13, connects to the 4 hole pad on switch SE-79.
 - where the jumper from breaker SE-80 connects to the 4 hole pad on switch SE-81.
 - where the incoming distribution line connects to the terminal pad of switch SE-91 at breaker SE-90.
 - where the jumper from breaker SE-90, passing through CT-14, connects to the 4 hole pad on switch SE-89.
 - where the jumper from breaker SE-90 connects to the 4 hole pad on switch SE-91.
 - where the incoming distribution line connects to the terminal pad of switch SE-101 at breaker SE-100.
 - where the jumper from breaker SE-100, passing through CT-15, connects to the 4 hole pad on switch SE-99.
 - where the jumper from breaker SE-100 connects to the 4 hole pad on switch SE-101.
 - where the incoming distribution line connects to the terminal pad of switch SE-121 at breaker SE-120.
 - where the jumper from breaker SE-120, passing through CT-12, connects to the 4

hole pad on switch SE-119.

- where the jumper from breaker SE-120 connects to the 4 hole pad on switch SE-121.

4. **Transformation Services Provided by LCRA TSC:** Yes

5. **Metering Services Provided by LCRA TSC:** Yes

6. **Delivery Voltage:** 12.5 kV

7. **Metered Voltage and Location:** The metered voltage is 12.5 kV. The metering current transformer for PWT-5, CT-4 is located in the total bay. The metering current transformer for PWT-4 is located in PWT-4. The metering potential transformers are located on the respective 12.5 kV operating buses.

8. **One Line Diagram Attached:** Yes

9. **Description of Facilities Owned by Each Party:**

City of Seguin owns:

- Seven (7) 15 kV distribution circuit breakers SE-20, SE-30, SE-40, SE-80, SE-90, SE-100, and SE-120, with foundations, jumpers, current transformers CT 5, CT 6, CT 7, CT 12, CT 13, CT 14, CT 15 and protective relaying
- Seven (7) distribution circuits with surge arresters

LCRA TSC owns:

The Seguin Substation including, but not limited to, the following items:

- Two (2) power transformers with associated surge arresters and protective relaying PWT-4, T-4 and PWT-5, T-5
- Two (2) circuit switchers CS-3529 and CS-3165
- Two (2) total circuit breakers SE-10 and SE-70
- One (1) metering current transformer CT-4
- Six (6) distribution and total bays including A-frames, trusses, insulators, 12.5 kV operating and transfer bus, disconnect switches and bus potential transformers
- Four (4) distribution bays including vertical structure, insulators, 12.5 kV operating and transfer bus and disconnect switches
- Underfrequency relay panel
- Station Service equipment
- Control house with battery

10. **Operational Responsibilities of Each Party:**

- The City will be responsible for the operation of the seven (7) distribution circuit breakers serving the City feeders.
- LCRA TSC will be responsible for the operation from the low voltage bus total breakers through the two (2) power transformers to the high voltage equipment.

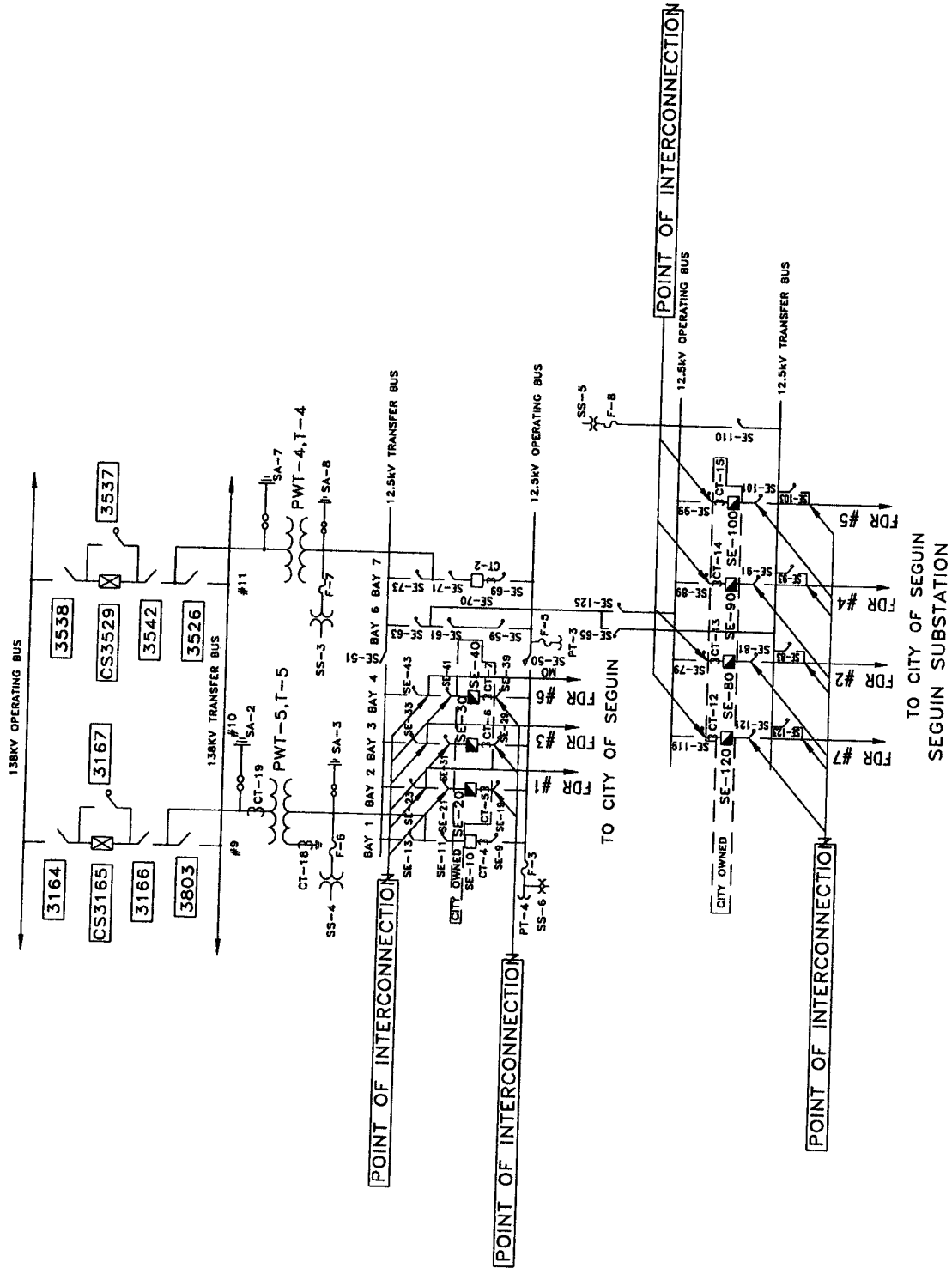
11. Maintenance Responsibilities of Each Party: Each Party will be fully responsible for the maintenance of the equipment it owns.

12. Other Terms and Conditions:

- The City and LCRA TSC are to share access to the substation by LCRA TSC locks in the gate and in the control house doors.
- The City is permitted to install, operate and maintain, a Strix model 82-2195 antenna and associated electronics at approximately 75 foot elevation on the existing LCRA TSC communications tower, operating at a transmit frequency of 5.725 Mhz and a receive frequency of 5.85 Mhz under the following conditions:
 - The City installation is reviewed and approved by LCRA TSC prior to installation.
 - The City installation does not interfere with LCRA TSC operations.
 - The City installation is for the sole purpose of electric utility operations associated with the substation and the City's distribution equipment.
 - If LCRA TSC in the future needs the communication tower space (at the sole discretion of LCRA TSC), then the City will relocate their facilities upon written notice from LCRA TSC.

SEGUIN ONE-LINE DIAGRAM

First Amendment



THIS IS NOT A COMPLETE ONE-LINE DIAGRAM
FOR A COMPLETE ONE-LINE DIAGRAM OF THIS
SUBSTATION, REFER TO DWG. S182-E-5.

FACILITY SCHEDULE NO. 3
First Amendment

1. **Name:** Seguin West Substation
2. **Facility Location:** The Seguin West Substation is located at 1405 New Braunfels St., Seguin, Guadalupe County, Texas.
3. **Points of Interconnection:** There are twelve (12) Points of Interconnection in the Seguin West Substation generally described as:
 - where the incoming distribution line connects to the tubular bus between switches SW-11 and SW-13 at breaker SW-10.
 - where the jumper from breaker SW-10 connects to the 4 hole pad on switch SW-9.
 - where the jumper from breaker SW-10 connects to the 4 hole pad on switch SW-11.
 - where the incoming distribution line connects to the tubular bus between switches SW-21 and SW-23 at breaker SW-20.
 - where the jumper from breaker SW-20 connects to the 4 hole pad on switch SW-19.
 - where the jumper from breaker SW-20 connects to the 4 hole pad on switch SW-21.
 - where the incoming distribution line connects to the tubular bus between switches SW-31 and SW-33 at breaker SW-30.
 - where the jumper from breaker SW-30 connects to the 4 hole pad on switch SW-29.
 - where the jumper from breaker SW-30 connects to the 4 hole pad on switch SW-31.
 - where the incoming distribution line connects to the tubular bus between switches SW-41 and SW-43 at breaker SW-40.
 - where the jumper from breaker SW-40 connects to the 4 hole pad on switch SW-39.
 - where the jumper from breaker SW-40 connects to the 4 hole pad on switch SW-41.
4. **Transformation Services Provided by LCRA TSC:** Yes
5. **Metering Services Provided by LCRA TSC:** Yes
6. **Delivery Voltage:** 12.5 kV
7. **Metered Voltage and Location:** The metered voltage is 12.5 kV. The metering current transformers are located in PWT-1. The metering potential transformer is located on the 12.5 kV operating bus.

8. **One Line Diagram Attached:** Yes

9. **Description of Facilities Owned by Each Party:**

City of Seguin owns:

- Four (4) distribution circuit breakers SW-10, SW-20, SW-30 and SW-40 with foundations, jumpers and protective relaying
- Twelve (12) riser pole distribution surge arresters at the feeder exits
- Two (2) steel stands for future underground feeder exits

LCRA TSC owns:

The Seguin West Substation including, but not limited to, the following items:

- One (1) circuit switcher CS-9745
- One (1) power transformer PWT-1, T-1 with associated surge arresters
- Five (5) distribution and total bays including A-frames, trusses, insulators, disconnect switches, 12.5 kV operating and transfer bus, and bus potential transformers
- Underfrequency relay panel
- Station Service equipment
- Control house with battery

10. **Operational Responsibilities of Each Party:**

- The City will be responsible for the operation of the four (4) distribution circuit breakers serving the City feeders.
- LCRA TSC will be responsible for the operation from the 12.5 kV bus through the power transformer to the high voltage equipment.

11. **Maintenance Responsibilities of Each Party:** Each Party will be fully responsible for the maintenance of the equipment it owns.

12. **Other Terms and Conditions:**

- The City and LCRA TSC are to share access to the substation by LCRA TSC locks in the gate and in the control house doors.
- The City is permitted to install, operate and maintain, a Strix model 82-2195 antenna and associated electronics at approximately 45 foot elevation on the existing LCRA TSC pole at the Southeast corner of the control house, operating at a transmit frequency of 5.725 Mhz and a receive frequency of 5.85 Mhz under the following conditions:
 - The City installation is reviewed and approved by LCRA TSC prior to installation.
 - The City installation does not interfere with LCRA TSC operations.
 - The City installation is for the sole purpose of electric utility operations associated with the substation and the City's distribution equipment.

- If LCRA TSC in the future needs the communication pole space (at the sole discretion of LCRA TSC), then the City will relocate their facilities upon written notice from LCRA TSC.

SEGUIN WEST ONE-LINE DIAGRAM

First Amendment

