



Control Number: 35077



Item Number: 209

Addendum StartPage: 0

Project No. 35077

**Third Amendment to
INTERCONNECTION AGREEMENT
Between
The City of Lampasas
and
LCRA Transmission Services Company**

RECEIVED
11 FEB 14 PM 2:41
FILING CLERK

December 3, 2010

**THIRD AMENDMENT TO
INTERCONNECTION AGREEMENT**

This Third Amendment ("Amendment") is made and entered into this 3rd day of December, 2010, between the City of Lampasas ("City") and the LCRA Transmission Services Corporation ("LCRA TSC") collectively referred to hereinafter as the Parties.

WHEREAS, the LCRA TSC and the City entered into that certain Interconnect Agreement executed June 16, 2008, as amended by that certain Amendment No. 1, executed as of September 30, 2008, as amended by that certain Amendment No. 2, executed as of November 19, 2009 (collectively, as amended, the "Agreement"); and

WHEREAS, the LCRA TSC removed total breakers LP-30 and LP-90 at Lampasas Substation and replaced them with load break switches

NOW, THEREFORE, in consideration of the mutual promises and undertakings herein set forth, the Parties agree to amend the Agreement as follows:


1. Exhibit "A" is deleted in its entirety and the Exhibit "A" attached to this Third Amendment is hereby added to the Agreement in lieu thereof.
2. Facility Schedule No. 1 (including the diagrams attached thereto) is deleted in its entirety and Facility Schedule No. 1 attached to this Third Amendment is hereby added to the Agreement in lieu thereof.
3. Facility Schedule No. 1 (including the diagrams attached thereto) attached to this Third Amendment will become effective upon execution of this Third Amendment by the Parties.

Except as otherwise expressly provided for herein, the Agreement will continue in full force and effect in accordance with its terms.

---The remainder of this page has intentionally been left blank---

IN WITNESS WHEREOF, the Parties have caused this Third Amendment to be executed in several counterparts, each of which shall be deemed an original but all shall constitute one and the same instrument.

CITY OF LAMPASAS

By: 

Name: Judith A. Hetherly

Title: Mayor

Date: 11-23-10

LCRA TRANSMISSION SERVICES
CORPORATION

By: 

Name: Ray Pfefferkorn, P.E.

Title: LCRA Transmission Engineering
Manager

Date: 12/3/10



EXHIBIT A
Third Amendment

[illegible]

FACILITY SCHEDULE NO. 1
Amendment No. 3

1. **Name:** Lampasas Substation
2. **Facility Location:** The Lampasas Substation is located at 494 CR 3400, Lampasas, Lampasas County, Texas 76550.
3. **Points of Interconnection:** There are Twelve (12) Points of Interconnection the Lampasas Substation generally described as:
 - where the incoming distribution line connects to the tubular bus between switches LP-11 and LP-13 at breaker LP-10.
 - where the jumper from breaker LP-10 connects to the 4 hole pad on switch LP-9.
 - where the jumper from breaker LP-10 connects to the 4 hole pad on switch LP-11.
 - where the incoming distribution line connects to the tubular bus between switches LP-21 and LP-23 at breaker LP-20.
 - where the jumper from breaker LP-20 connects to the 4 hole pad on switch LP-19.
 - where the jumper from breaker LP-20 connects to the 4 hole pad on switch LP-21.
 - where the incoming distribution line connects to the tubular bus between switches LP-61 and LP-63 at breaker LP-60.
 - where the jumper from breaker LP-60 connects to the 4 hole pad on switch LP-59.
 - where the jumper from breaker LP-60 connects to the 4 hole pad on switch LP-61.
 - where the incoming distribution line connects to the tubular bus between switches LP-81 and LP-83 at breaker LP-80.
 - where the jumper from breaker LP-80 connects to the 4 hole pad on switch LP-79.
 - where the jumper from breaker LP-80 connects to the 4 hole pad on switch LP-81.
4. **Transformation Services Provided by LCRA TSC:** Yes
5. **Metering Services Provided by LCRA TSC:** Yes
6. **Delivery Voltage:** 12.5 kV
7. **Metered Voltage and Location:** The metered voltage is 12.5 kV. The metering current transformers are located in each of the total bays. The metering potential transformers are located on each 12.5 kV operating bus.
8. **One Line Diagram Attached:** Yes
9. **Description of Facilities Owned by Each Party:**

City of Lampasas owns:

- Four (4) distribution circuits including dead-end insulators that attach to the dead-end structure, conductor, and hardware
- Four (4) distribution circuit breakers LP-10, LP-20, LP-60, and LP-80 and associated foundations, jumpers, relaying and cabling
- Underfrequency relaying equipment

LCRA TSC owns:

The Lampasas Substation including, but not limited to, the following items:

- Two (2) power transformers T-3 and T-2 with associated surge arresters
- Two (2) circuit switchers CS-3345 and CS-3715 with disconnect switches 3344 and 3274 and bypass switches 3347 and 3717
- Four (4) 138 kV switches 3342, 3343, 3712 and 3723
- Two (2) load break switches LP-35 and LP-85
- One (1) single phase current transformer CT-5
- Ten (10) distribution, mobile tie bus and total bays including A-frames, trusses, insulators, disconnect switches, surge arresters, 12.5 kV operating and transfer bus, bus potential transformers, and metering current transformers
- Station Service equipment
- Control house with battery

10. Operational Responsibilities of Each Party:

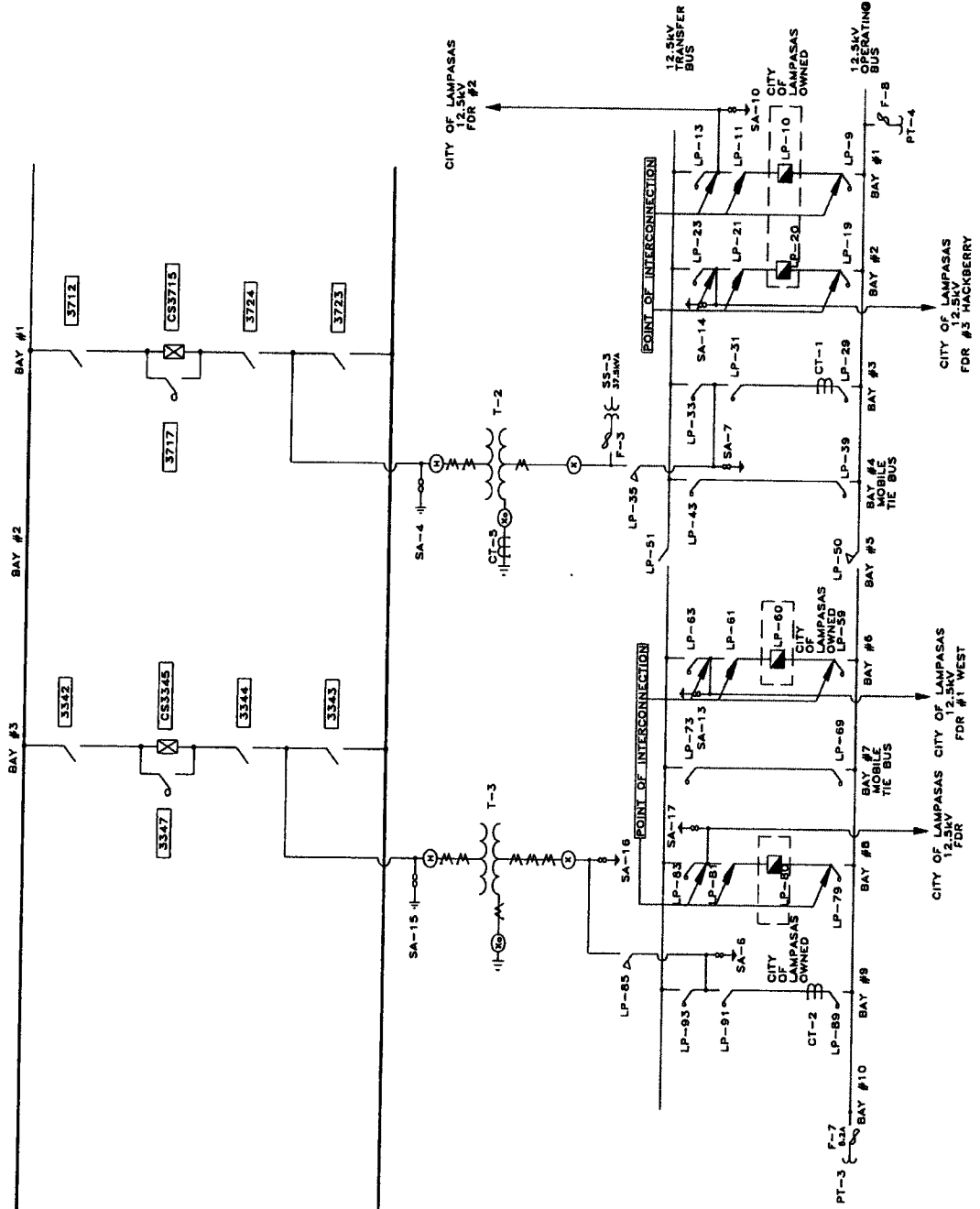
- The City will be responsible for the operation of the four (4) distribution circuit breakers serving the City feeders.
- LCRA TSC will be responsible for the operation of the power transformer and the 138 kV equipment.

11. Maintenance Responsibilities of Each Party: Each Party will be fully responsible for the maintenance of the equipment it owns.

12. Other Terms and Conditions: The City and LCRA TSC are to share access to the substation by LCRA TSC locks in the gate and in the control house doors.

LAMPASAS ONE-LINE DIAGRAM

Amendment No. 3



LAMPASAS SUBSTATION

THIS IS NOT A COMPLETE ONE-LINE DIAGRAM.
FOR A COMPLETE ONE-LINE DIAGRAM OF THIS
SUBSTATION, REFER TO DWG. S150-E-0001-01.