



Control Number: 35077



Item Number: 206

Addendum StartPage: 0

Project No. 35077

First Amendment to

INTERCONNECTION AGREEMENT

Between

Bandera Electric Cooperative, Inc.

and

LCRA Transmission Services Company

December 19, 2010

RECEIVED
11 FEB 11 PM 4:48
FILING CLERK

**FIRST AMENDMENT TO
INTERCONNECTION AGREEMENT**

This First Amendment ("Amendment") is made and entered into this 19th day of December, 2010, between the Bandera Electric Cooperative, Inc. ("BEC") and the LCRA Transmission Services Corporation ("LCRA TSC") collectively referred to hereinafter as the Parties.

WHEREAS, the LCRA TSC and the BEC entered into that certain Interconnect Agreement executed January 19, 2010, and;

WHEREAS, the LCRA TSC removed the capacitor bank at the Bandera Substation, and;

WHEREAS, the LCRA TSC will install a capacitor bank at the Leahey Substation;

NOW, THEREFORE, in consideration of the mutual promises and undertakings herein set forth, the Parties agree to amend the Agreement as follows:

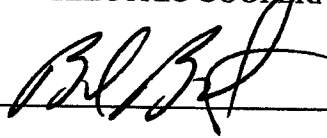
1. Exhibit "A" is deleted in its entirety and the Exhibit "A" attached to this First Amendment is hereby added to the Agreement in lieu thereof.
2. Facility Schedule No. 4 (including the diagrams attached thereto) is deleted in its entirety and Facility Schedule No. 4 attached to this First Amendment is hereby added to the Agreement in lieu thereof.
3. Facility Schedule No. 4 (including the diagrams attached thereto) attached to this First Amendment will become effective upon execution of this First Amendment by the Parties.
4. Facility Schedule No. 9 (including the diagrams attached thereto) is deleted in its entirety and Facility Schedule No. 9 attached to this First Amendment is hereby added to the Agreement in lieu thereof.
5. Facility Schedule No. 9 (including the diagrams attached thereto) attached to this First Amendment will become effective upon execution of this First Amendment by the Parties.
6. Facility Schedule No. 11 (including the diagrams attached thereto) is deleted in its entirety and Facility Schedule No. 11 attached to this First Amendment is hereby added to the Agreement in lieu thereof.
7. Facility Schedule No. 11 (including the diagrams attached thereto) attached to this First Amendment will become effective upon execution of this First Amendment by the Parties.

Except as otherwise expressly provided for herein, the Agreement will continue in full force and effect in accordance with its terms.

---The remainder of this page has intentionally been left blank---

IN WITNESS WHEREOF, the Parties have caused this First Amendment to be executed in several counterparts, each of which shall be deemed an original but all shall constitute one and the same instrument.

BANDERA ELECTRIC COOPERATIVE, INC.


By: 

Name: Brian D. Bartos', P.E.

Title: Manager, Engineering

Date: 12/19/2010

LCRA TRANSMISSION SERVICES CORPORATION

By: 

Name: Ray Pfefferkorn, P.E.

Title: LCRA Transmission Engineering Manager

Date: 12/16/10



EXHIBIT A
First Amendment

[illegible]

FACILITY SCHEDULE NO. 4
Amendment No. 1

1. **Name:** Leahey Substation
2. **Facility Location:** The Leahey Substation is located at 3143 S. US Hwy 83, Rio Frio, Real County, Texas 78879.
3. **Points of Interconnection:** There is one (1) Point of Interconnection in the Leahey Substation generally described as:
 - where the jumper from switch 332 on the 69 kV dead end structure attaches to the dead end insulator near switch 344 on the 69 kV box structure.
4. **Transformation Services Provided by LCRA TSC:** Yes
5. **Metering Services Provided by LCRA TSC:** Yes
6. **Delivery Voltage:** 69 kV
7. **Metered Voltage and Location:** The metering voltage is 12.5 kV and 24.9 kV. The metering current transformers for PWT-1, T-1 are located in the 12.5 kV transformer bus and in each distribution bay. The metering current transformer for PWT-2, T-2 is located in the 24.9 kV transformer bus. The bus potential transformers are located on the 12.5 kV operating bus and the 24.9 kV operating bus.
8. **One Line Diagram Attached:** Yes
9. **Description of Facilities Owned by Each Party:**

BEC owns:

The Leahey Substation including, but not limited to, the following items:

- Six (6) 69 kV switches 342, 344, 346, 348, 351, and 353
- One (1) 69 kV circuit breaker 350 including foundation, jumpers and protective relay packages
- Two (2) power transformer PWT-1, T-1; PWT-2, T-2 and associated surge arresters
- One (1) 69 kV bus potential transformer PT-3
- Two (2) totalizing current transformers CT-1 and CT-2
- Two (2) power fuses F-1 and F-2
- All distribution circuits including dead end insulators that attach to the dead end structure, conductors, and hardware
- All distribution circuit breakers including jumpers, protective relay packages and foundations
- All distribution and total bays including A-frames, trusses, insulators, disconnect switches, surge arresters, operating and transfer buses, bus potential transformers

- and associated cabling
- Six (6) single phase regulators REG-1 and REG-2 with associated disconnect and bypass switches
- Control house and battery bank
- Two (2) station service SS-1 and SS-2

LCRA TSC owns:

- The following transmission line comprised of conductors, insulators, and connecting hardware:
 - Leahey to Camp Wood transmission line
- One (1) 69 kV A-frame dead-end structure, foundation, insulators and jumpers
- One (1) 69 kV bus suspension dead-end structure, foundation, insulators and jumpers
- Three (3) 69 kV switches 332, 334 and 338
- One (1) 69 kV circuit breaker 320 including foundation, jumpers and protective relay packages
- One (1) capacitor bank CP-1 including structures, foundations, insulators, fuses, and jumpers
- One (1) circuit switcher CS-325 with associated disconnect switch 324
- One (1) current transformer CT-14
- One (1) single phase current transformer CT-15
- One (1) capacitor bank potential transformer PT-4
- One (1) capacitor bank control panel
- Five (5) current metering transformers CT-3, CT-4, CT-5, CT-6 and CT-7

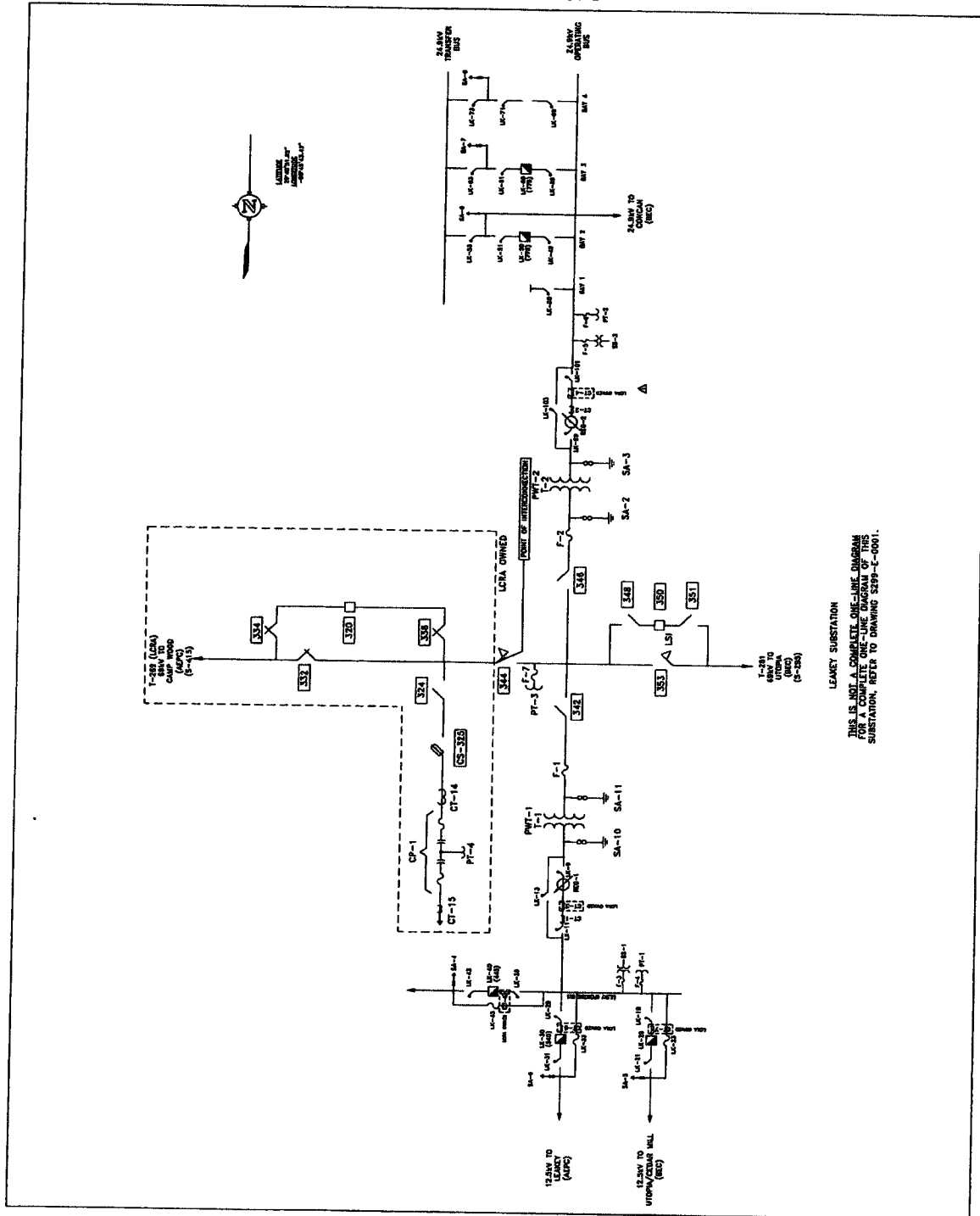
10. Operational Responsibilities of Each Party: Each Party is responsible for the operation of the equipment it owns.

11. Maintenance Responsibilities of Each Party: Each Party will be fully responsible for the maintenance of the equipment it owns.

12. Other Terms and Conditions: BEC and LCRA TSC are to share access to the substation by LCRA TSC locks in the gate and in the control house doors.

LEAKEY ONE-LINE DIAGRAM

Amendment No. 1



FACILITY SCHEDULE NO. 9
Amendment No. 1

1. **Name:** Verde Creek Substation
2. **Facility Location:** The Verde Creek Substation is located at 452 E. Skyline Dr., Center Point, Kerr County, Texas 78010.
3. **Points of Interconnection:** There are two (2) Points of Interconnection in the Verde Creek Substation generally described as:
 - where the 138 kV operating bus expansion connector bolts to the four hole pad on switch 5559.
 - where the 138 kV transfer bus expansion connector bolts to the four hole pad on switch 5563.
4. **Transformation Services Provided by LCRA TSC:** No
5. **Metering Services Provided by LCRA TSC:** No
6. **Delivery Voltage:** 138 kV
7. **Metered Voltage and Location:** N/A
8. **One Line Diagram Attached:** Yes
9. **Description of Facilities Owned by Each Party:**
 - BEC owns:
 - 138 kV dead-end structure, foundation, insulators and jumpers (Bay 3)
 - One (1) 138 kV circuit breaker 5560BN including jumpers and protective relay package
 - Three (3) 138 kV switches 5559, 5561 and 5563
 - One (1) CCVT, CCVT-4
 - One (1) wave trap and tuner WT-4
 - One (1) surge arrester SA-3
 - LCRA TSC owns:
 - The Verde Creek substation including but not limited to:
 - 138 kV dead-end structures, foundations, insulators and jumpers (except Bay 3)
 - 138 kV bus including structures, foundations and jumpers
 - Three (3) 138 kV circuit breakers 5540, 5550 and 5570 including jumpers and protective relay packages
 - Ten (10) 138 kV switches 2476, 5539, 5541, 5543, 5549, 5551, 5553, 5569, 5571 and 5573
 - Three (3) surge arresters SA-1, SA-2 and SA-4

- One (1) CCVT, CCVT-3
- One (1) coupling capacitor CC-2
- Two (2) wave traps and tuners WT-2 and WT-3
- One (1) circuit switcher CS-2475
- One (1) capacitor bank CP-1
- Two (2) potential transformers PT-1 and PT-2
- Three (3) current transformers CT-2, CT-4 and CT-5
- One (1) single phase current transformer CT-3
- Control house and battery bank

10. **Operational Responsibilities of Each Party:** Each Party is responsible for the operation of the equipment it own.
11. **Maintenance Responsibilities of Each Party:** Each Party will be fully responsible for the maintenance of the equipment it owns.
12. **Other Terms and Conditions:** BEC and LCRA TSC are to share access to the substation by LCRA TSC locks in the gate and in the control house doors.

Amendment No. 1



FACILITY SCHEDULE NO. 11
Amendment No. 1

1. **Name:** Bandera Substation
2. **Facility Location:** The Bandera Substation is located at 3414 State Hwy 16 N., Bandera, Bandera County, Texas 78003.
3. **Points of Interconnection:** There are no Points of Interconnection in the Bandera Substation.
4. **Transformation Services Provided by LCRA TSC:** Yes
5. **Metering Services Provided by LCRA TSC:** Yes
6. **Delivery Voltage:** N/A
7. **Metered Voltage and Location:** The metering voltage is 12.5 kV. The metering current transformer is located in the PWT-1, T-1 transformer bus. The bus potential transformer is located on both 12.5 kV operating bus.
8. **One Line Diagram Attached:** Yes
9. **Description of Facilities Owned by Each Party:**
BEC owns: The Bandera Substation including all facilities and equipment except that listed as owned by LCRA TSC.

LCRA TSC owns:
 - One (1) metering current transformer CT-1
 - One (1) remote terminal unit (RTU) (panel 30)
 - One (1) meter panel (panel 28)
 - One (1) supervisory control panel (SIP) (panel 29)
 - One (1) communications panel (panel 21)
 - Two (2) 25 kV switches BA-69 and BA-71
10. **Operational Responsibilities of Each Party:** Each Party is responsible for the operation of the equipment it owns.
11. **Maintenance Responsibilities of Each Party:** Each Party will be fully responsible for the maintenance of the equipment it owns.
12. **Other Terms and Conditions:** BEC and LCRA TSC are to share access to the substation by LCRA TSC locks in the gate and in the control house doors.

BANDERA ONE-LINE DIAGRAM

Amendment No. 1

