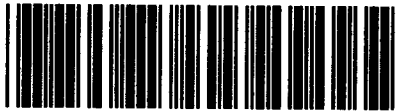




Control Number: 35077



Item Number: 199

Addendum StartPage: 0

**PUC Project No. 35077**

2010 DEC -3 PM 4:44

**First Amendment to Interconnection Agreement**

**Between**

**the City of Giddings**

**and**

**LCRA Transmission Services Corporation**

**September 28, 2010 .**

**FIRST AMENDMENT TO  
INTERCONNECTION AGREEMENT**

This First Amendment ("**Amendment**") is made and entered into this 28<sup>th</sup> day of September, 2010, between The City of Giddings ("**City**") and the LCRA Transmission Services Corporation ("**LCRA TSC**"), collectively referred to hereinafter as "**the Parties**".

**WHEREAS**, the Corporation and City entered into that certain Interconnection Agreement executed May 22, 2008, and

**WHEREAS**, LCRA TSC is removing totalizing breaker GD-20 at Giddings Substation and adding a neutral current transformer to T-1

**NOW, THEREFORE**, in consideration of the mutual promises and undertakings herein set forth, the Parties agree to amend the Agreement as follows:

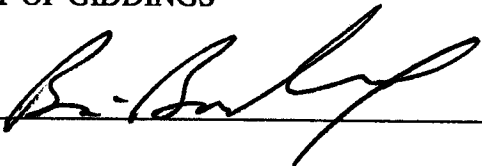
1. Exhibit "A" attached to the Agreement is deleted in its entirety and the Exhibit "A" attached to this First Amendment is hereby added to the Agreement in lieu thereof.
2. Facility Schedule No. 1 (including the diagrams attached thereto) is deleted in its entirety and Facility Schedule No. 1 attached to this First Amendment is hereby added to the Agreement in lieu thereof.
3. Facility Schedule No. 1 (including the diagrams attached thereto) attached to this First Amendment will become effective upon execution of this First Amendment by the Parties.

Except as otherwise expressly provided for herein, the Agreement will continue in full force and effect in accordance with its terms.

---- The remainder of this page has intentionally been left blank ----

IN WITNESS WHEREOF, the Parties have caused this First Amendment to be executed in several counterparts, each of which shall be deemed an original but all shall constitute one and the same instrument.

CITY OF GIDDINGS

By: 

Name: Brian Boudreaux

Title: City Manager

Date: 9-15-10

LCRA TRANSMISSION SERVICES  
CORPORATION

By: 

Name: Ray Pfefferkorn, P.E.

Title: LCRA Transmission Engineering  
Manager

Date: 9/28/10

---- The remainder of this page has intentionally been left blank ----



**First Amendment**  
**EXHIBIT A**

[illegible]

**First Amendment  
FACILITY SCHEDULE NO. 1**

1. **Name:** Giddings Substation
2. **Facility Location:** The Giddings Substation is located at 1398 W.Austin St., Giddings, Lee County, Texas 78942.
3. **Points of Interconnection:** There are nine (9) Points of Interconnection in the Giddings Substation generally described as:
  - where the incoming distribution lines connect with the string bus between switches GD-41 and GD-43 at breaker GD-40.
  - where the jumper from breaker GD-40 connects to the 4 hole pad on switch GD-39.
  - where the jumper from breaker GD-40 connects to the 4 hole pad on switch GD-41.
  - where the incoming distribution lines connect with the string bus between switches GD-51 and GD-53 at breaker GD-50.
  - where the jumper from breaker GD-50 connects to the 4 hole pad on switch GD-49.
  - where the jumper from breaker GD-50 connects to the 4 hole pad on switch GD-51.
  - where the incoming distribution lines connect with the string bus between switches GD-71 and GD-73 at breaker GD-70.
  - where the jumper from breaker GD-70 connects to the 4 hole pad on switch GD-69.
  - where the jumper from breaker GD-760 connects to the 4 hole pad on switch GD-71.
4. **Transformation Services Provided by LCRA TSC:** Yes
5. **Metering Services Provided by LCRA TSC:** Yes
6. **Delivery Voltage:** 12.5 kV
7. **Metered Voltage and Location:** The metered voltage is 12.5 kV. The metering current transformers are located in the power transformer. The metering potential transformers are located on the 12.5 kV operating bus.
8. **One Line Diagram Attached:** Yes
9. **Description of Facilities Owned by Each Party:**

City of Giddings owns:

  - Three (3) distribution circuits including dead-end insulators that attach to the dead-end structure, conductor, and hardware
  - Three (3) distribution circuit breakers GD-40, GD-50, and GD-70 including jumpers and protection packages
  - Three (3) 12.5 kV distribution circuit breaker foundations

LCRA TSC owns:

The Giddings Substation including, but not limited to, the following items:

- One (1) power transformer PWT-1, T-1 with associated surge arresters
- One (1) circuit switcher CS-5355
- One (1) single phase current transformer CT-7
- Four (4) distribution and total bays including vertical bus structure, insulators, disconnect switches, surge arresters, 12.5 kV operating and transfer bus, bus potential transformers, and metering current transformers
- Underfrequency relay panel
- Station Service equipment
- Control house with battery

**10. Operational Responsibilities of Each Party:**

- The City will be responsible for the operation of the three (3) distribution circuit breakers serving the City feeders.
- LCRA TSC will be responsible for the operation from the low voltage total breaker through the power transformer to the high voltage equipment.

**11. Maintenance Responsibilities of Each Party:**

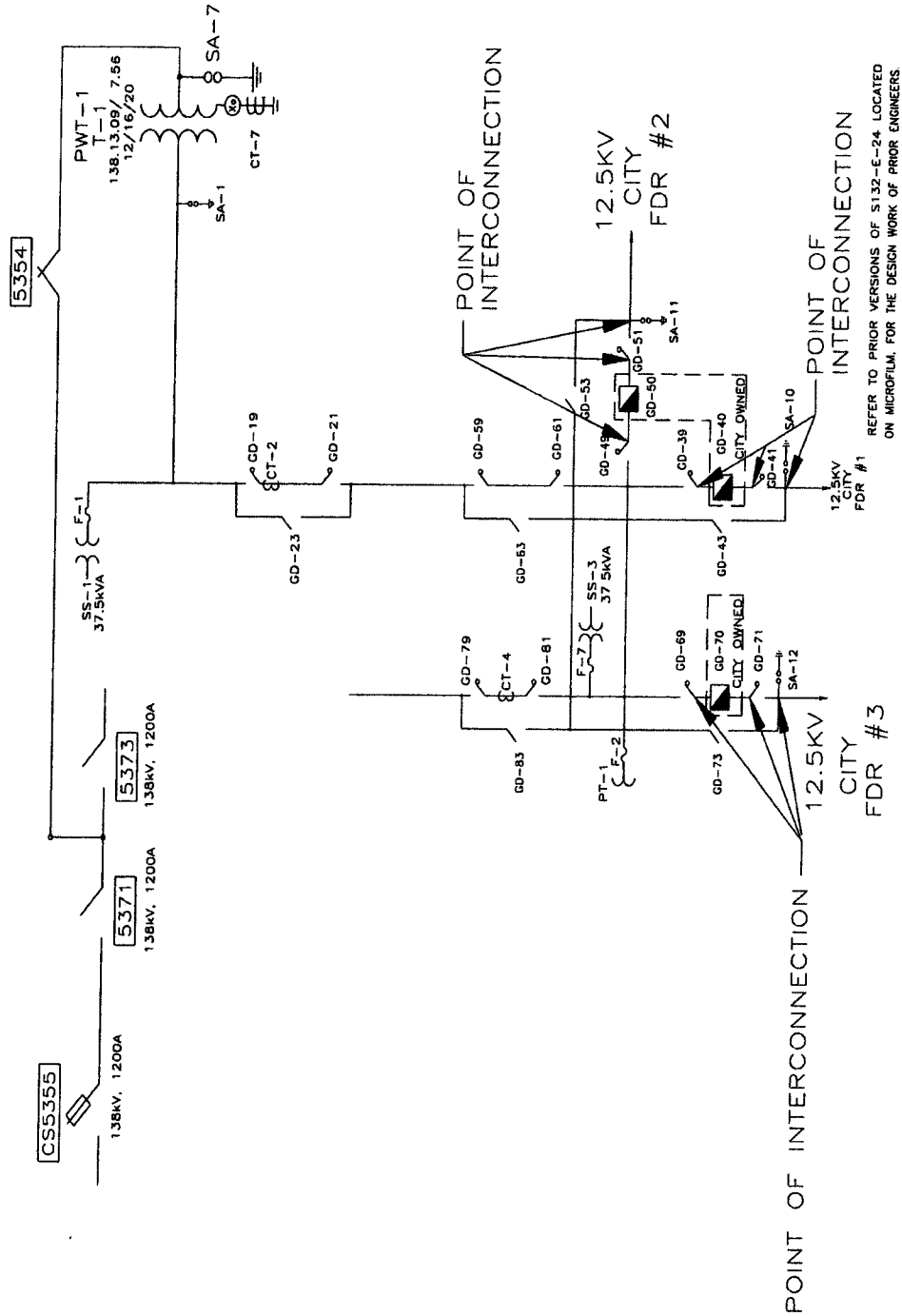
- Each Party will be fully responsible for the maintenance of the equipment it owns.

**12. Other Terms and Conditions:**

- The City and LCRA TSC are to share access to the substation by LCRA TSC locks in the gate and in the control house doors.

# First Amendment

## GIDDINGS ONE-LINE DIAGRAM



GIDDINGS SUBSTATION

THIS IS NOT A COMPLETE ONE-LINE DIAGRAM.

FOR A COMPLETE ONE-LINE DIAGRAM OF THIS SUBSTATION, REFER TO DRAWING S132-E-24-1