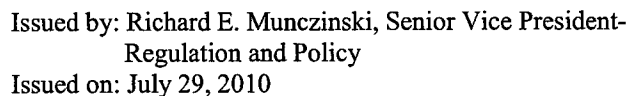


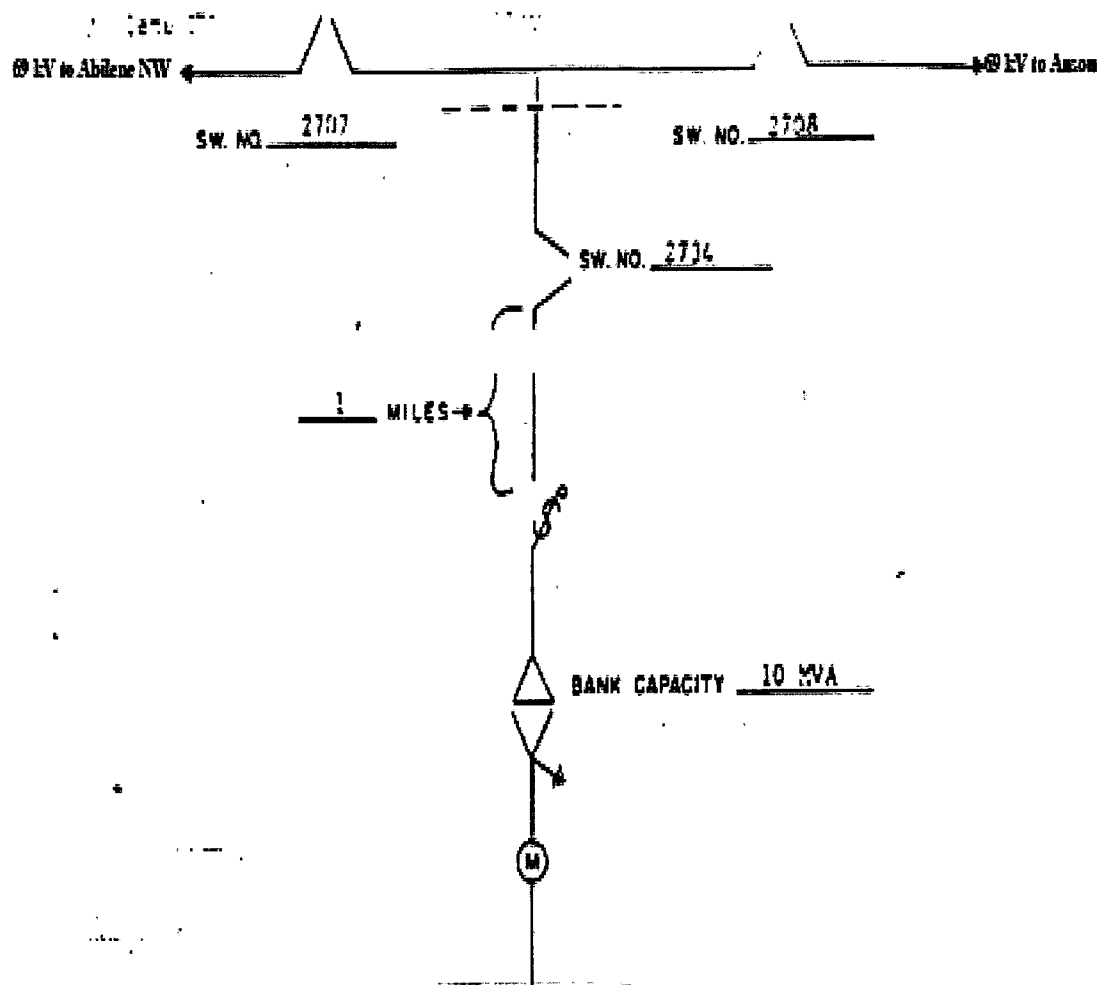
### FACILITY SCHEDULE NO. 1

1. Name: **Clyde**
2. Facility Location: Point of Interconnection is outside of Company's Clyde substation, northwest of Clyde, TX, Callahan County, north side of IH-20.
3. Voltage at Point of Interconnection: 12.5 kV
4. Metered Voltage: 12.5 kV
5. Loss Adjustment Due To Meter Location: None
6. Normal Operation of Interconnection: Closed
7. One-Line Diagram Attached: Yes
8. Description of Facilities Installed and Owned by Each Party:
9. Operational Responsibilities of Each Party:
  - Each Party operates the facilities it owns.
10. Maintenance Responsibilities of the Parties:
  - Each Party maintains the facilities it owns.
11. Maximum Contract Demand: 2,100 kW
12. Other Terms and Conditions:
  - Cooperative is to have access to the OCR #5360 and load side disconnect switch #5361



## **FACILITY SCHEDULE NO. 2**

1. Name: **Delk**
2. Facility Location: Point of Interconnection is in Cooperative's Delk substation located on County road, four and half (4.5) miles north of FM 3034, one (1) mile east of Hwy. 277.
3. Voltage at Point of Interconnection: 69.0 kV
4. Metered Voltage: 12.5 kV
5. Loss Adjustment Due to Meter Location: No
6. Normal Operation of Interconnection: Closed
7. One-Line Diagram Attached: Yes
8. Description of Facilities Installed and Owned by Each Party:
10. Operation Responsibilities of Each Party:
  - Each Party operates the facilities it owns.
10. Maintenance Responsibilities of Each Party:
  - Each Party maintains the facilities it owns.
11. Maximum Contract Demand: 4,100 kW
12. Other Terms and Conditions:
  - Company is to have access to Cooperative's switch #2734.
  - PT & CT sold to Cooperative

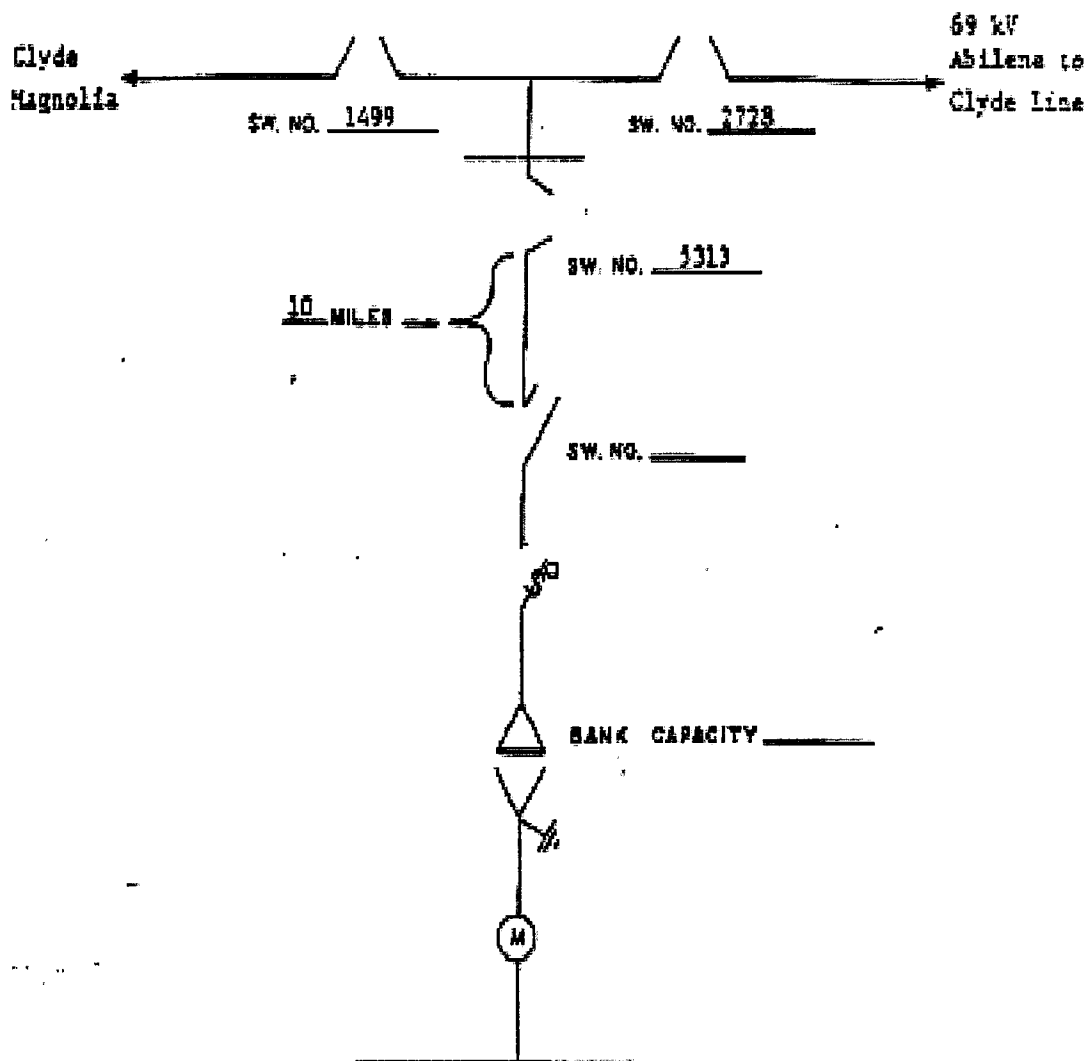


1. Dashed line indicates point of change in ownership.
2. West Texas Utilities Company is to have access to Taylor Electric Coop's Switch No. 2734.

COOPERATIVE	METER POINT NAME
Taylor Electric Cooperative, Inc.	Delk

### FACILITY SCHEDULE NO. 3

1. Name: **Denton Valley**
2. Facility Location: Point of Interconnection is twenty-three (23) miles southeast of Abilene, TX, Callahan County on Highway 36 at the intersection of FM 604 in Cooperative's substation.
3. Voltage at Point of Interconnection: 69.0 kV
4. Metered Voltage: 12.5 kV
5. Loss Adjustment Due To Meter Location: No
6. Norman Operation of Interconnection: Closed
7. One-Line Diagram Attached: Yes
8. Description of Facilities Installed and Owned by Each Party:
9. Operation Responsibilities of Each Party:
  - Each Party operates the facilities it owns.
10. Maintenance Responsibilities of Each Party:
  - Each Party maintains the facilities it owns.
11. Maximum Contract Demand: 5,000 kW
12. Other Terms and Conditions:
  - Company is to have access to Cooperative's switch #5313
  - PT & CT sold to Cooperative

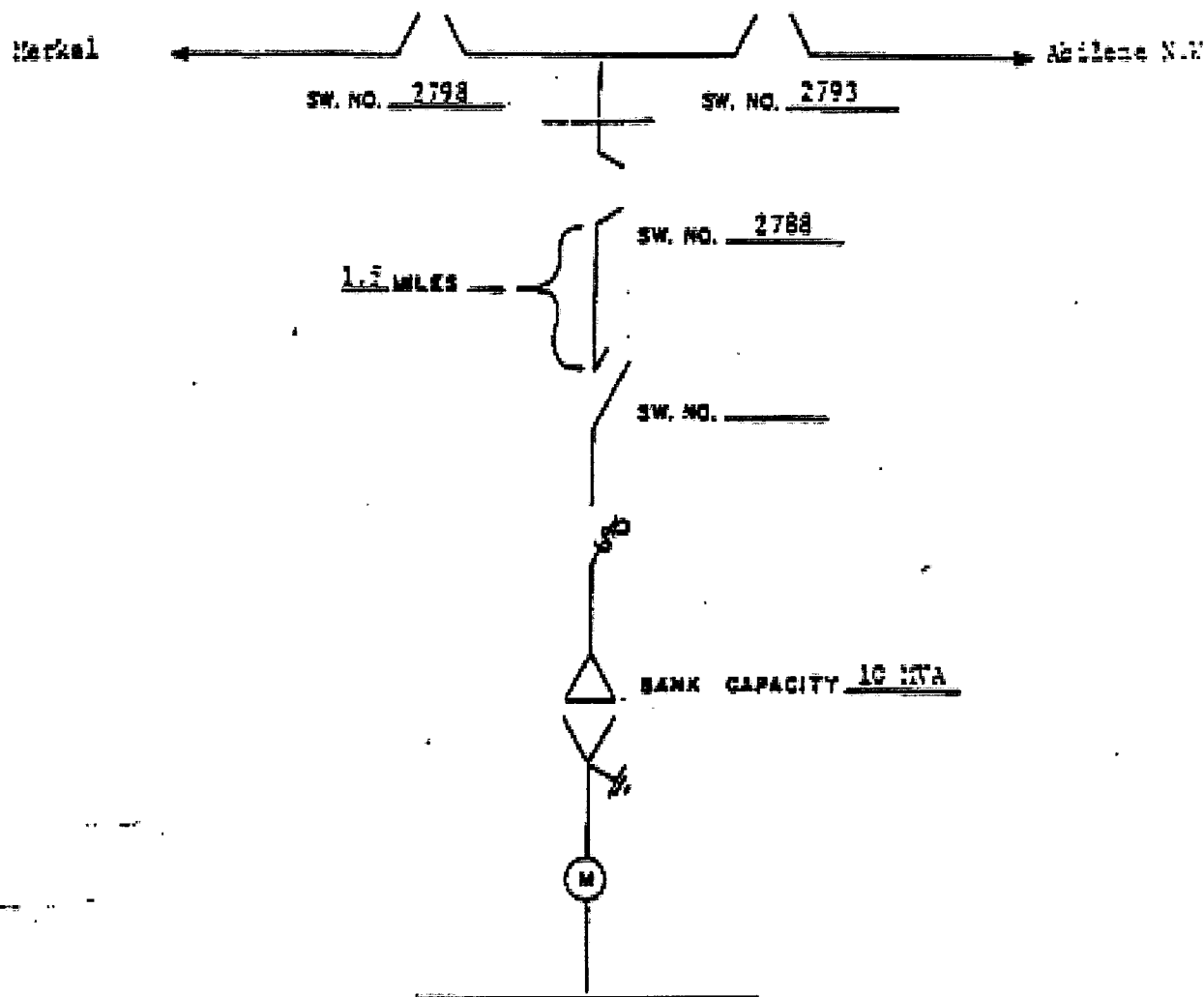


1. West Texas Utilities Co. is to have access to the Taylor Electric Cooperative switch indicated above as switch 3313.
2. Dashed line indicates change of ownership.

COOPERATIVE	METER POINT NAME
Taylor Electric Cooperative, Inc.	Denton Valley

#### **FACILITY SCHEDULE NO. 4**

1. Name: **Ely**
2. Facility Location: Point of Interconnection is in Cooperative's Ely substation at the north side of IH-20 near the intersection of Wells Lane and IH-20 approximately six (6) miles east of Merkel
3. Voltage at Point of Interconnection: 69.0 kV
4. Metered Voltage: 12.5 kV
5. Loss Adjustment Due To Meter Location: No
6. Norman Operation of Interconnection: Closed
7. One-Line Diagram Attached: Yes
8. Description of Facilities Installed and Owned by Each Party:
9. Operation Responsibilities of Each Party:
  - Each Party operates the facilities it owns.
10. Maintenance Responsibilities of Each Party:
  - Each Party maintains the facilities it owns.
11. Maximum Contract Demand: 9,200 kW
13. Other Terms and Conditions:
  - Company is to have access to Cooperative's switch #2788
  - PT & CT sold to Cooperative



1. Dashed line indicates point of change in ownership.
2. West Texas Utilities Company is to have access to Taylor Electric Coop's Switch No. 2788.

COOPERATIVE	METER POINT NAME
Taylor Electric Cooperative, Inc.	Ely



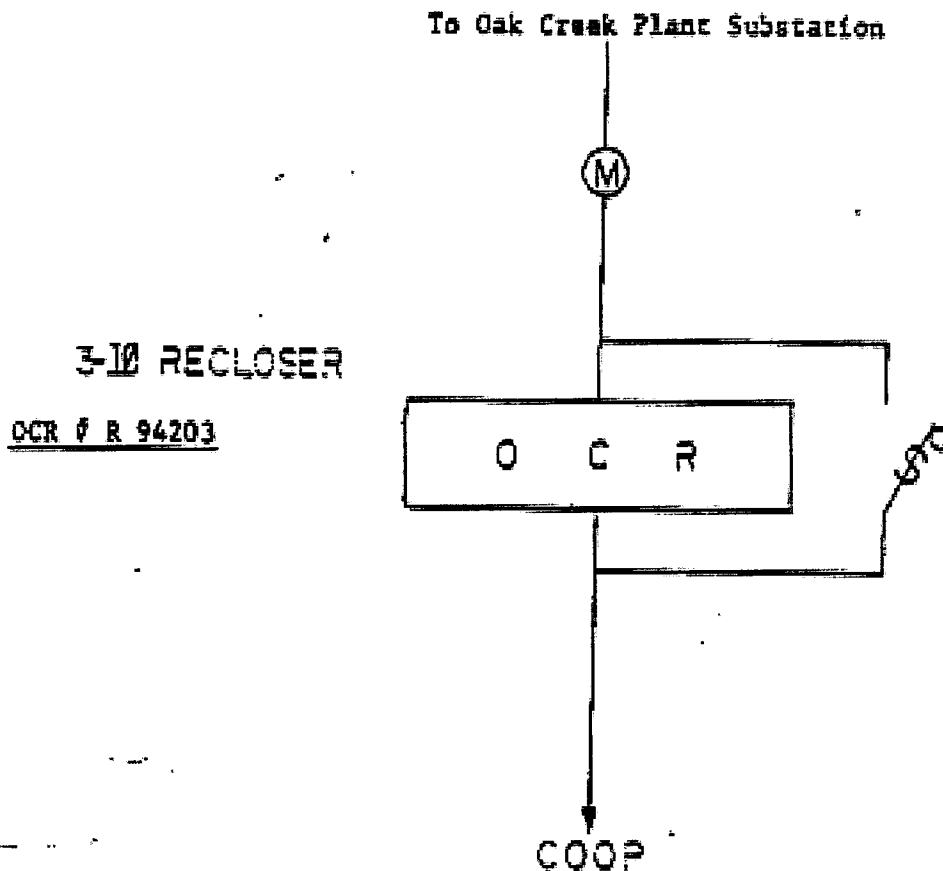
### FACILITY SCHEDULE NO. 5

1. Name: **Eula**
2. Facility Location: Point of Interconnection is in
3. Voltage at Point of Interconnection: 12.5 kV
4. Metered Voltage: 12.5 kV
5. Loss Adjustment Due To Meter Location: No
6. Normal Operation of Interconnection: Closed
7. One-Line Diagram Attached: Yes
8. Description of Facilities Installed and Owned by Each Party:
9. Operation Responsibilities of Each Party:
  - Each Party operates the facilities it owns.
10. Maintenance Responsibilities of Each Party:
  - Each Party maintains the facilities it owns.
11. Maximum Contract Demand: 1,500 kW
14. Other Terms and Conditions:

[LEFT BLANK FOR EULA ONE-LINE DRAWING]

### FACILITY SCHEDULE NO. 6

1. Name: **Fort Chadbourne**
2. Facility Location: Point of Interconnection is approximately 7,800 feet out of Company's Fort Chadbourne substation or one and one tenth (1.1) mile east of State Highway 70 at the south end of the Oak Creek Reservoir Dam, Coke County.
3. Voltage at Point of Interconnection: 12.5 kV
4. Metered Voltage: 12.5 kV
5. Loss Adjustment Due To Meter Location: No
6. Norman Operation of Interconnection: Closed
7. One-Line Diagram Attached: Yes
8. Description of Facilities Installed and Owned by Each Party:
9. Operation Responsibilities of Each Party:
  - Each Party operates the facilities it owns.
10. Maintenance Responsibilities of Each Party:
  - Each Party maintains the facilities it owns.
11. Maximum Contract Demand: 1,000 kW
12. Other Terms and Conditions:
  - Cooperative is to have access to OCR #R94203

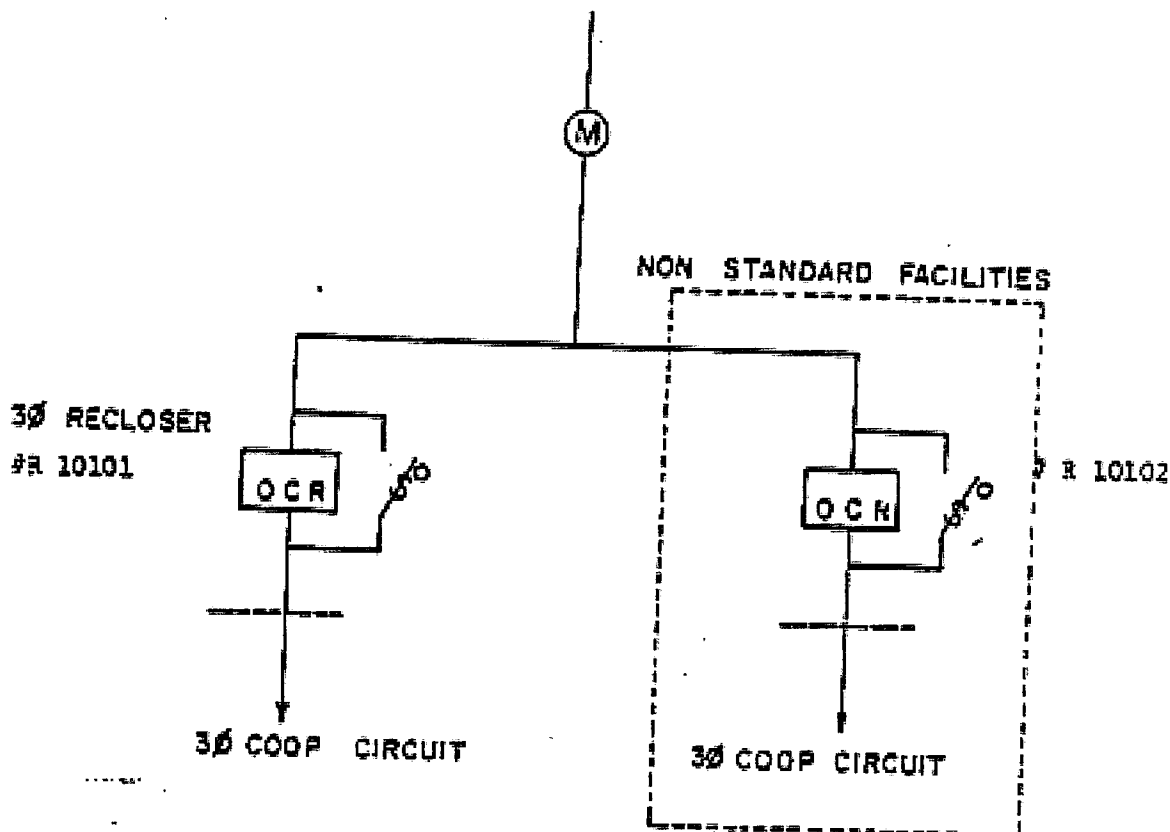


1. Taylor Electric Coop is to have access to OCR # 94203.

COOPERATIVE	METER POINT NAME
Taylor Electric Cooperative, Inc.	Ft. Chadbourne

### FACILITY SCHEDULE NO. 7

1. Name: **Hamby**
2. Facility Location: Point of Interconnection is approximately 28,300 feet out of the Company's Rainey Creek substation, on north side of Highway 351 at Hamby, TX, Taylor County.
3. Voltage at Point of Interconnection: 12.5 kV
4. Metered Voltage: 12.5 kV
5. Loss Adjustment Due To Meter Location: No
6. Norman Operation of Interconnection: Closed
7. One-Line Diagram Attached: Yes
8. Description of Facilities Installed and Owned by Each Party:
9. Operation Responsibilities of Each Party:
  - Each Party operates the facilities it owns.
10. Maintenance Responsibilities of Each Party:
  - Each Party maintains the facilities it owns.
11. Maximum Contract Demand: 1,600 kW
12. Other Terms and Conditions:
  - Cooperative is to have access to OCR #R10101 and #R10102



1. Taylor Electric Coop is to have access to OCR Number R 10101 and R 10102.
2. Dashed line indicated point of change in ownership.

COOPERATIVE	METER POINT NAME
Taylor Electric Cooperative, Inc.	Hamby

**FACILITY SCHEDULE NO. 8**

**1. Name: Happy Valley (TERMINATED)**

## FACILITY SCHEDULE NO. 9

1. Name: **Lowden**
2. Facility Location: Point of Interconnection is west of 1850 E. Lowden St. (N32-28.905, W99-41.610) in Abilene, TX, Taylor County, approximately two (2) miles outside Company's Aileen substation
3. Voltage at Point of Interconnection: 12.5 kV
4. Metered Voltage: 12.5 kV
5. Loss Adjustment Due To Meter Location: No
6. Norman Operation of Interconnection: Closed
7. One-Line Diagram Attached: No
8. Description of Facilities Installed and Owned by Each Party:
9. Operation Responsibilities of Each Party:
  - Each Party operates the facilities it owns.
10. Maintenance Responsibilities of Each Party:
  - Each Party maintains the facilities it owns.
11. Maximum Contract Demand: 3,000 kW
12. Other Terms and Conditions:



[Page Left Blank for Drawing]

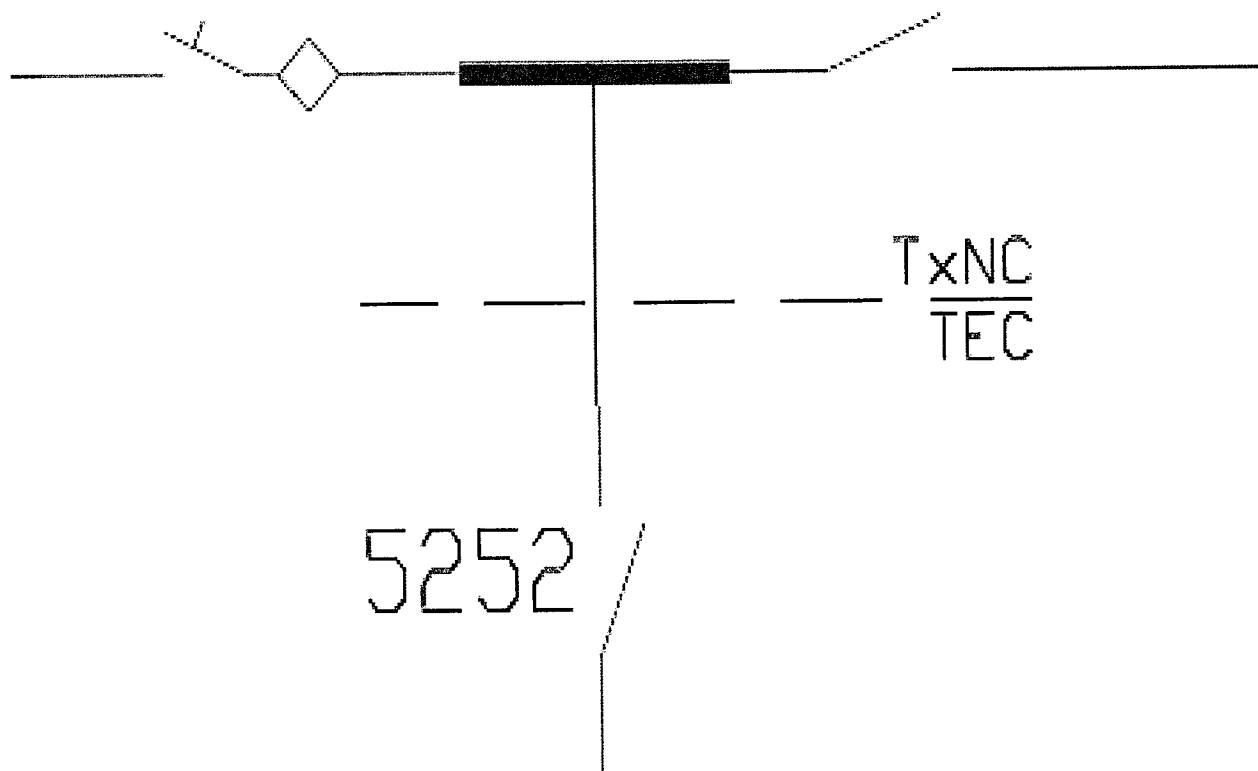
### FACILITY SCHEDULE NO. 10

1. Name: **Potosi**
2. Facility Location: Point of Interconnection is at tap off Company's S. Abilene-Lake Leon 138 kV line 7,260 feet east of Hwy 36, 1,657 feet south of County Road 250. Meter is in Cooperative's substation 1,904 feet east of Hwy 36 on north side of County Road 238.
3. Voltage at Point of Interconnection: 138 kV
4. Metered Voltage: 12.5 kV
5. Loss Adjustment Due To Meter Location: No
6. Normal Operation of Interconnection: Closed
7. One-Line Diagram Attached: Yes
8. Description of Facilities Installed and Owned by Each Party:
9. Operation Responsibilities of Each Party:
  - Each Party operates the facilities it owns.
10. Maintenance Responsibilities of Each Party:
  - Each Party maintains the facilities it owns.
11. Maximum Contract Demand:
12. Other Terms and Conditions:
  - Metering equipment is owned by Cooperative or its designated representative at this Point of Interconnection

# POTOSI TAP

5272

5276

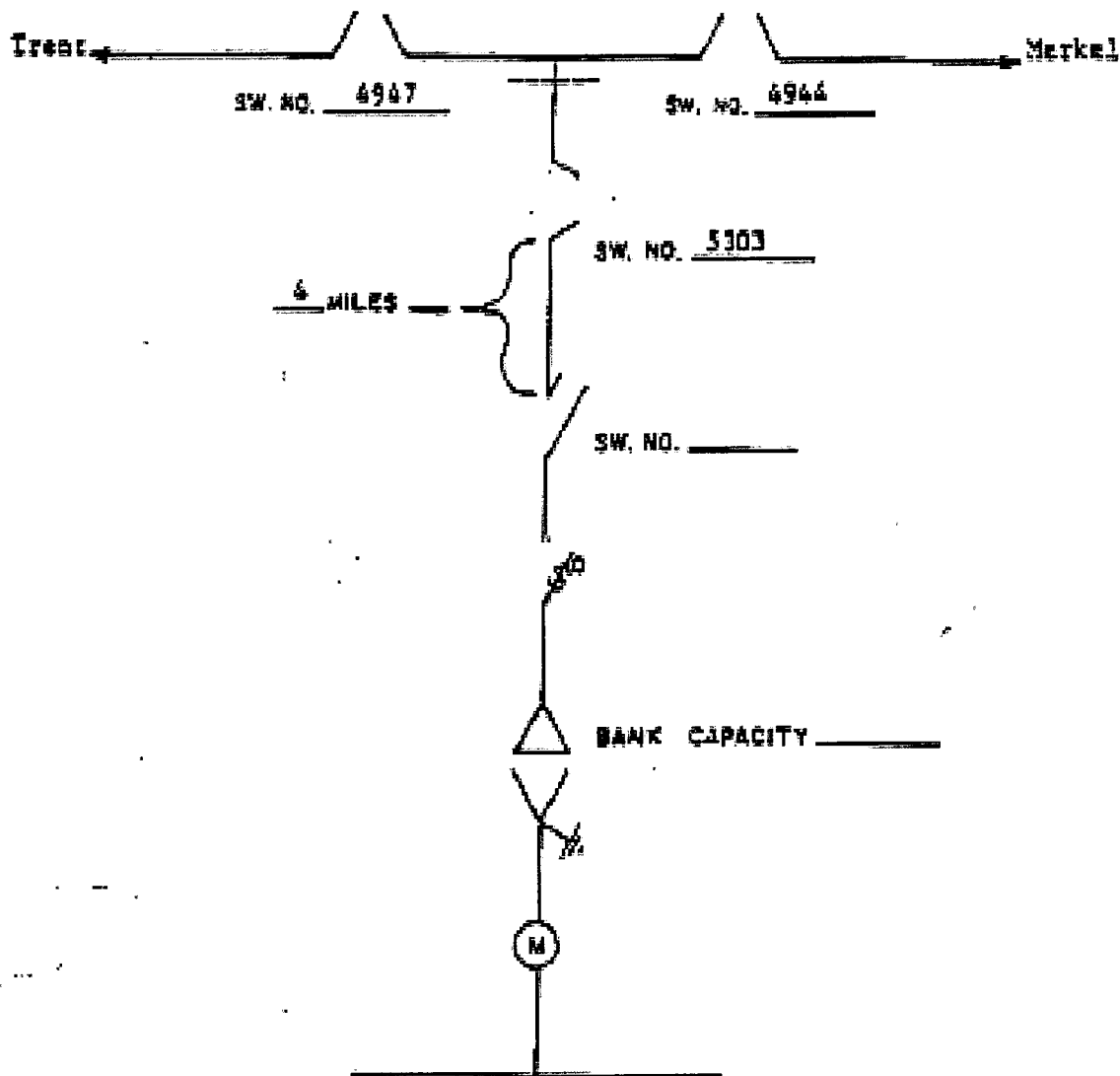


**FACILITY SCHEDULE NO. 11**

**1. Name: Robert(TERMINATED)**

## FACILITY SCHEDULE NO. 12

1. Name: **Scott**
2. Facility Location: Point of Interconnection is in the Cooperative's 69/2.4 kV substation located two (2) miles south of I-20 half way between Merkel, TX and Trent, TX, Taylor County.
3. Voltage at Point of Interconnection: 69.0 kV
4. Metered Voltage: 2.4 kV
5. Loss Adjustment Due To Meter Location: No
6. Normal Operation of Interconnection: Closed
7. One-Line Diagram Attached: Yes
8. Description of Facilities Installed and Owned by Each Party:
9. Operation Responsibilities of Each Party:
  - Each Party operates the facilities it owns.
10. Maintenance Responsibilities of Each Party:
  - Each Party maintains the facilities it owns.
11. Maximum Contract Demand: 2,300 kW
12. Other Terms and Conditions:
  - Company is to have access to Cooperative switch 5303
  - PT & CT sold to Cooperative

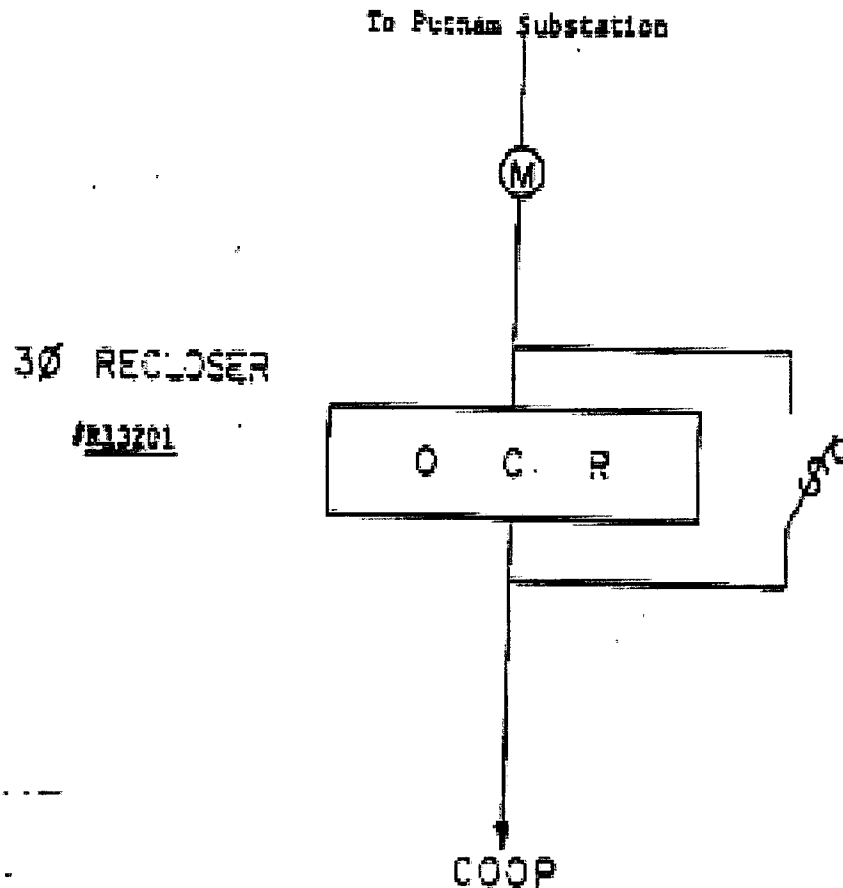


1. West Texas Utilities is to have access to the Taylor Electric Co-op switch indicated above as switch 5301.
2. Dashed line indicates change of ownership.

COOPERATIVE	METER POINT NAME
Taylor Electric Cooperative, Inc.	Scott

### FACILITY SCHEDULE NO. 13

1. Name: **Scranton**
2. Facility Location: Point of Interconnection is at the intersection of FM 880 and FM 1864 five (5) miles south of Putnam, TX.
3. Voltage at Point of Interconnection: 12.5 kV
4. Metered Voltage: 12.5 kV
5. Loss Adjustment Due To Meter Location: No
6. Norman Operation of Interconnection: Closed
7. One-Line Diagram Attached: Yes
8. Description of Facilities Installed and Owned by Each Party:
9. Operation Responsibilities of Each Party:
  - Each Party operates the facilities it owns.
10. Maintenance Responsibilities of Each Party:
  - Each Party maintains the facilities it owns.
11. Maximum Contract Demand: 1,400 kW
12. Other Terms and Conditions:
  - Cooperative is to have access to OCR #R13201



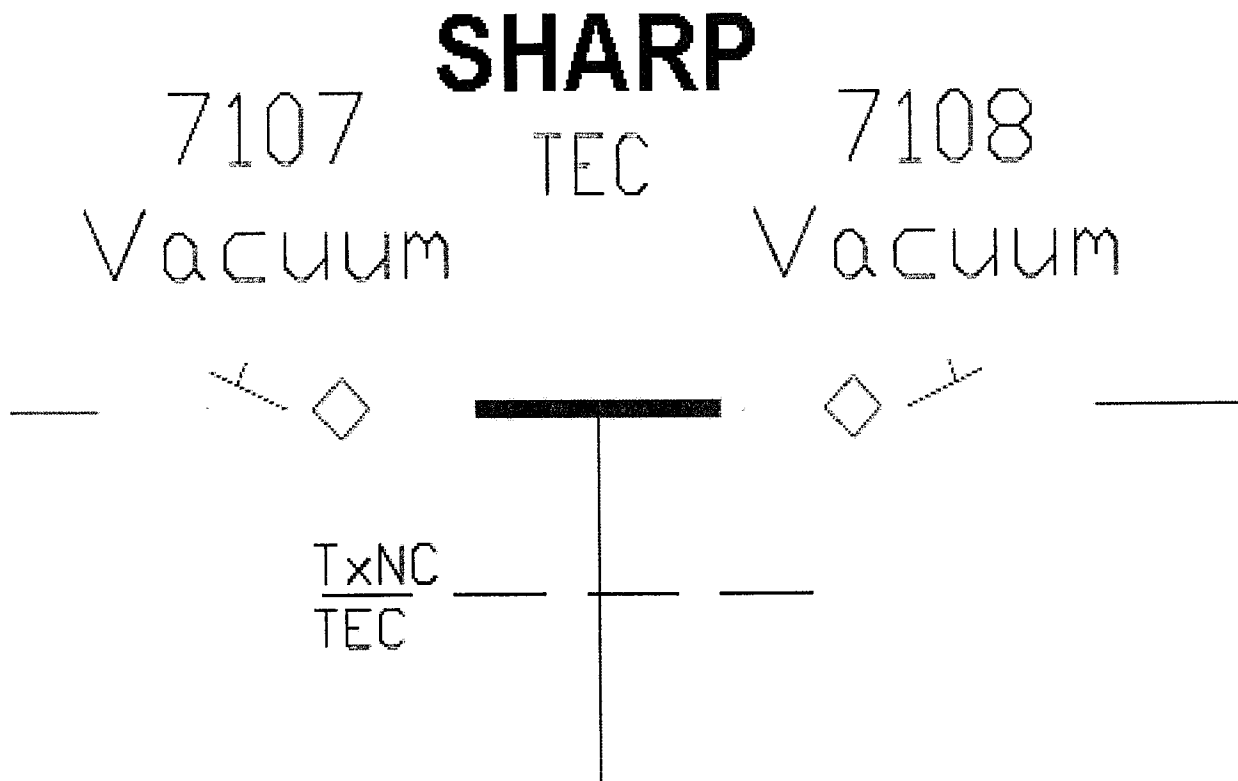
1. Taylor Electric Co-op is to have access to OCR #R13201.
2. OCR #R13201 is a proposed facility that is to be installed at the meter point.

COOPERATIVE	METER POINT NAME
Taylor Electric Cooperative, Inc.	Seranton



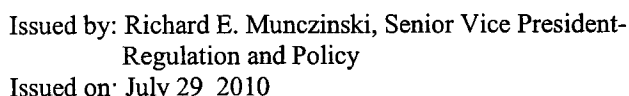
## FACILITY SCHEDULE NO. 14

1. Name: **Sharp**
2. Facility Location: Point of Interconnection is at tap off Company's S. Abilene-Elm Creek 138 kV line approximately 1,500 feet west of Company's Abilene South Substation near the intersection of Waldrop Lane and US Hwy 83. Meter is in Cooperative's substation less than one span from the tap.
3. Voltage at Point of Interconnection: 138 kV
4. Metered Voltage: 12.5 kV
5. Loss Adjustment Due To Meter Location: No
6. Norman Operation of Interconnection: Closed
7. One-Line Diagram Attached: Yes
8. Description of Facilities Installed and Owned by Each Party:
9. Operation Responsibilities of Each Party:
  - Each Party operates the facilities it owns.
10. Maintenance Responsibilities of Each Party:
  - Each Party maintains the facilities it owns.
11. Maximum Contract Demand:
12. Other Terms and Conditions:
  - Metering equipment is owned by Cooperative or its designated representative at this Point of Interconnection



### **FACILITY SCHEDULE NO. 15**

1. Name: **Tuscola**
2. Facility Location: Point of Interconnection is at Company's Tuscola substation, Taylor County
3. Voltage at Point of Interconnection: 12.5 kV
4. Metered Voltage: 12.5 kV
5. Loss Adjustment Due To Meter Location: No
6. Norman Operation of Interconnection: Closed
7. One-Line Diagram Attached: Yes
8. Description of Facilities Installed and Owned by Each Party:
9. Operation Responsibilities of Each Party:
  - See Operating Agreement for Tuscola Cooperative Point of Delivery July 2, 1999 (AFTER ONE-LINE DIAGRAM BELOW).
10. Maintenance Responsibilities of Each Party:
  - Each Party maintains the facilities it owns.
11. Maximum Contract Demand: 1,500 kW
12. Other Terms and Conditions:





**CSW Transmission & Distribution Operations  
Dispatch Operations - WTU**

---

**Subject:** Taylor Electric Co-op – Tuscola Point of Delivery Operating Procedure

---

**OPERATING AGREEMENT FOR TUSCOLA TEC POINT OF DELIVERY  
July 2, 1999 (superseeds all previous operating agreements)**

**TAYLOR ELECTRIC COOPERATIVE**

1. Taylor Electric Cooperative (TEC) shall have access to West Texas Utilities Company's (WTU) Tuscola Substation to operate OCR 6725 and line-side disconnect 6726. The fused bypass switch 6727 shall not be operated without the WTU Dispatch Operations Dispatchers permission.
2. TEC may operate OCR 6725 using the operator on the recloser.
3. If TEC closes the recloser after the recloser is locked out, WTU's Dispatch Operations Dispatcher shall be notified in a timely manner.
4. TEC may operate line-side disconnect switch 6726 after obtaining switching instructions from WTU's Dispatch Operations.
5. If TEC takes a planned clearance on this circuit, WTU's Dispatch Operations shall be notified in advance of the clearance.
6. TEC shall notify WTU's Dispatch Operations of the times when a switch or recloser in the substation was operated.

**WEST TEXAS UTILITIES COMPANY**

1. WTU shall notify TEC of any planned outages or work at the Tuscola Substation prior to the time that work is to be done.
2. WTU shall not close OCR 6725 to pick up load without specific instructions from TEC to do so.
3. WTU shall make provisions for TEC to access the Tuscola Substation via dual locks to the gate.

**Subject:** Taylor Electric Co-op – Tuscola Point of Delivery Operating Procedure

**OPERATING AGREEMENT FOR TUSCOLA TEC POINT OF DELIVERY  
July 2, 1999 (superseeds all previous operating agreements)**

IN WITNESS WHEREOF, COMPANY and Customer have caused this Agreement to be executed in duplicate in their names by their respective duly authorized representatives as of the date and year first above written.

TAYLOR ELECTRIC COOPERATIVE, INC.

CUSTOMER

ATTEST:

Lonna Brumby

By: Tommy Cutler  
General Manager

WEST TEXAS UTILITIES COMPANY

COMPANY

ATTEST:

Marena Murray

By: Paul F. Jester P.E.  
Director, Transmission & Distribution  
Operations

### FACILITY SCHEDULE NO. 16

1. Name: **Kirby**
2. Facility Location: The Point of Interconnection (32-22-49.33N, 99-44-55.79W) is located in Taylor County, Texas in the city limits of Abilene on the west side of Memorial Drive south of Covenant Drive.
3. Voltage at Point of Interconnection: 12.5 kV
4. Metered Voltage 12.5 kV
5. Loss Adjustment Due To Meter Location: No
6. Normal Operation of Interconnection: Closed
7. One-Line Diagram Attached: Yes
8. Description of Facilities Installed and Owned by Each Party:

Company's Facilities:

- approximately 600 feet of 3-phase, 12.5 kV overhead distribution line
- one (1) wood poles
- 3-phase gang operated switch
- 12 kV primary meter
- Canyon Rock Substation #210, Feeder #5035

Cooperative's Facilities:

- 3-phase electronic recloser

9. Operational Responsibilities of Each Party:

Each Party controls and operates the facilities it owns.

10. Maintenance Responsibilities of Each Party:

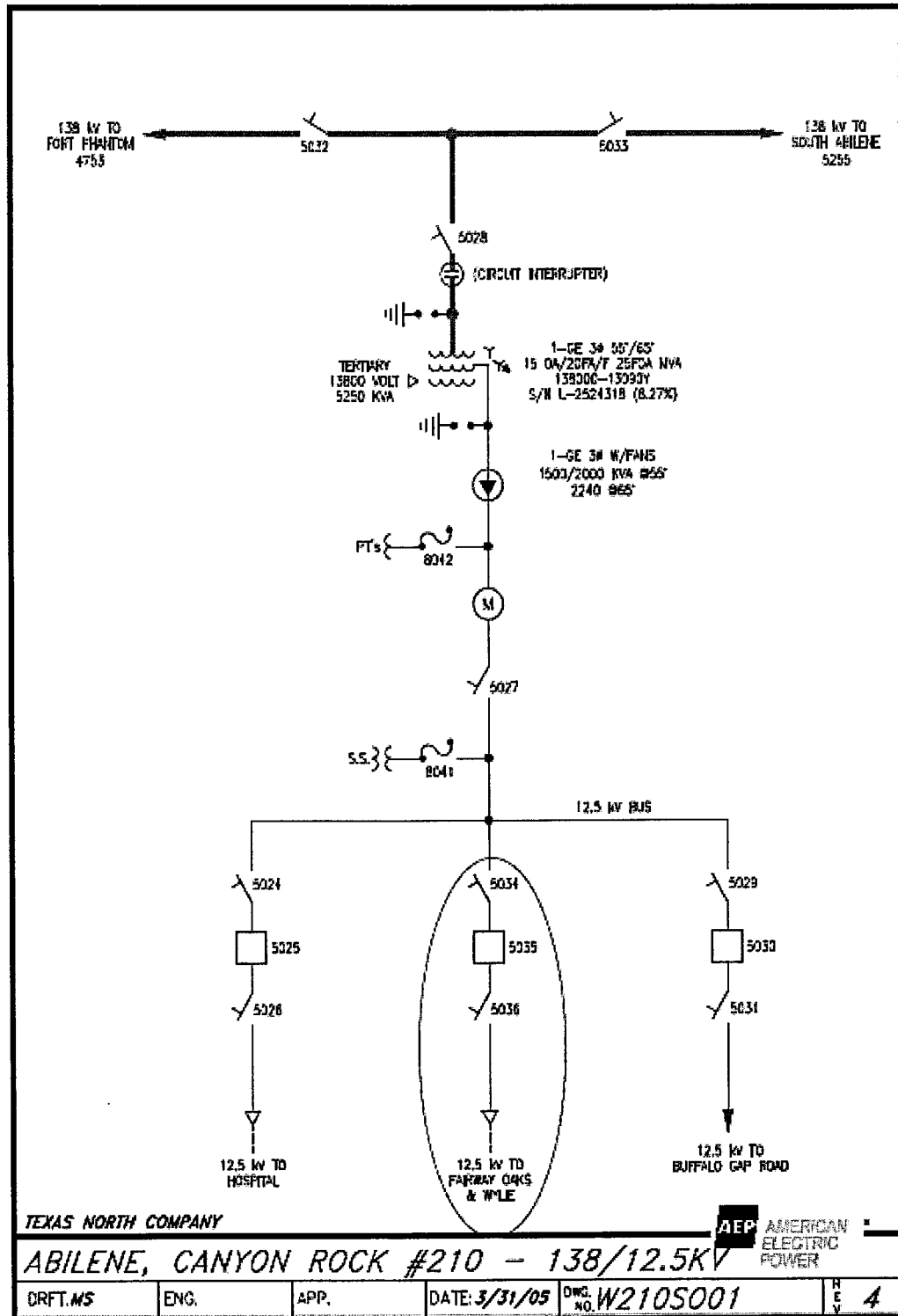
Each Party maintains the facilities it owns.

11. Maximum Contract Demand: 1500 kW

12. Other Terms and Conditions:

Cooperative recognizes that Company is installing the Facilities described hereinabove to facilitate Cooperative's request for a new Point of Interconnection to be provided by this Agreement. If Cooperative cancels its request for this Point of Interconnection prior to energizing this Point of Interconnection or if Cooperative terminates this Point of Interconnection in accordance with Section 4.5 because the Facilities are not required, Cooperative agrees to pay the actual installed costs incurred and committed to be incurred by Company, and the actual costs of removal of the Company material and equipment. The total installed cost of the Company Facilities described hereinabove is estimated to be sixteen thousand five hundred dollars (\$16,500) which Cooperative agrees is reasonable.





## Kirby Point of Interconnection

