

Rio Grande Electric Cooperative, Inc.	Conoco Sub #404
---------------------------------------	-----------------

FACILITY SCHEDULE NO. 3

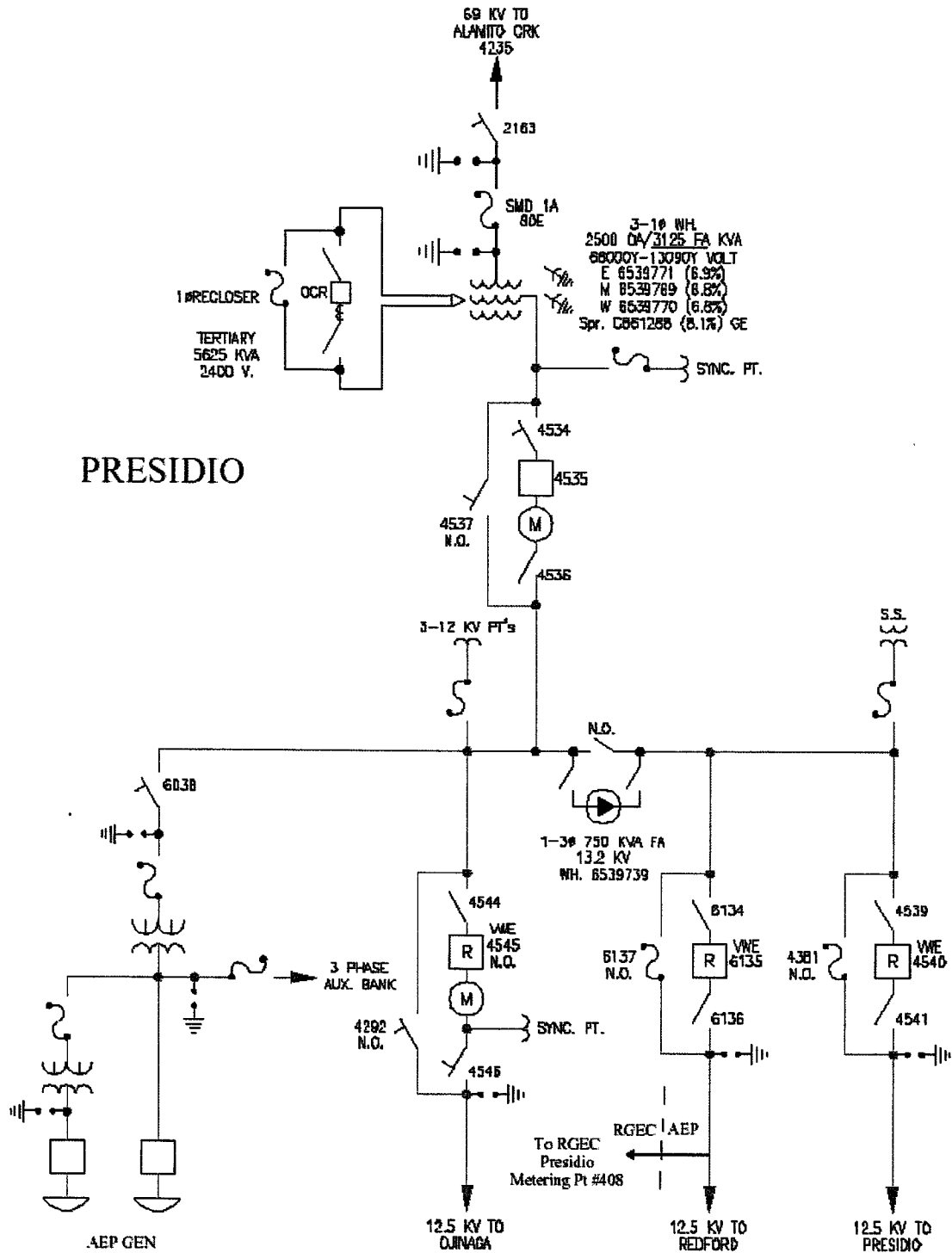
1. **Name:** City of Presidio Wells
2. **Facility Location:** AEP's Presidio Substation is located in the City of Presidio, in Presidio County, Texas. The Point of Interconnection is at the City of Presidio water well pumps where RGEC taps AEP's distribution feeder #6135 from the substation.
3. **Delivery Voltage:** 12.5 kV
4. **Meter Voltage and Location:** 12.5 kV at the City of Presidio water wells
5. **Normal Operation of Interconnection:** Closed
6. **One Line Diagram Attached:** Yes
7. **Description of Facilities Owned by Each Party:**

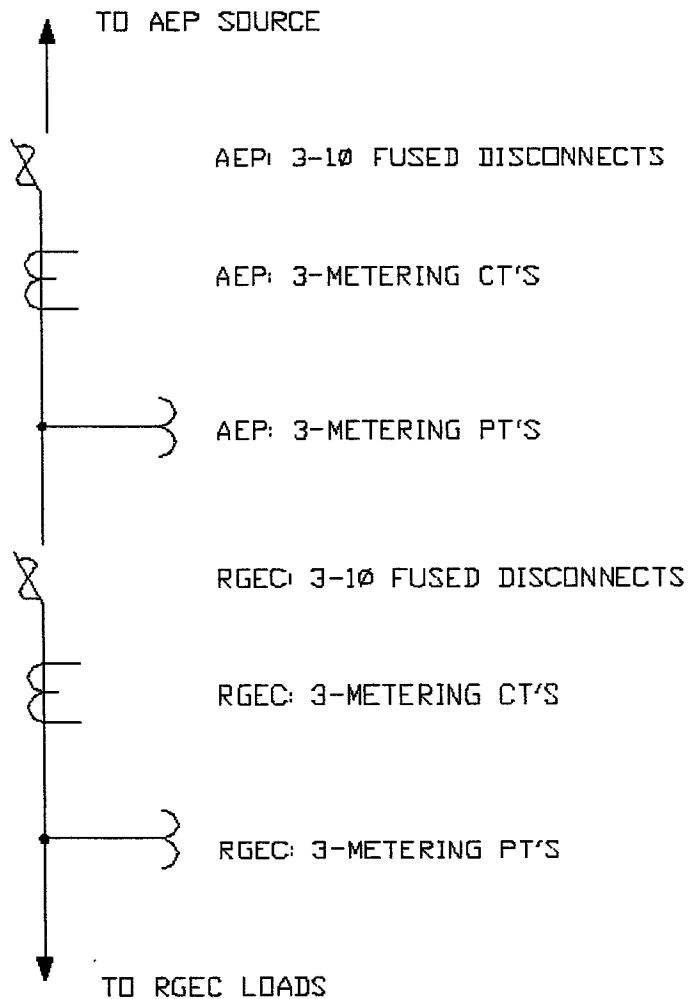
AEP owns the Presidio Substation and all the facilities within it. AEP owns distribution feeder circuit #6135 out of the substation up to and including the pole, fuse and metering equipment at the City of Presidio water wells.

RGEC owns the distribution feeder circuit at the City of Presidio water wells not owned by AEP.
8. **Operational Responsibilities of Each Party:**

Each Party operates and controls all facilities it owns.
9. **Maintenance Responsibilities of Each Party:**

Each Party maintains all facilities it owns.
10. **Other Terms and Conditions:** None





Rio Grande Electric Cooperative, Inc.	Presidio Metering Point #408
---------------------------------------	------------------------------

FACILITY SCHEDULE NO. 4

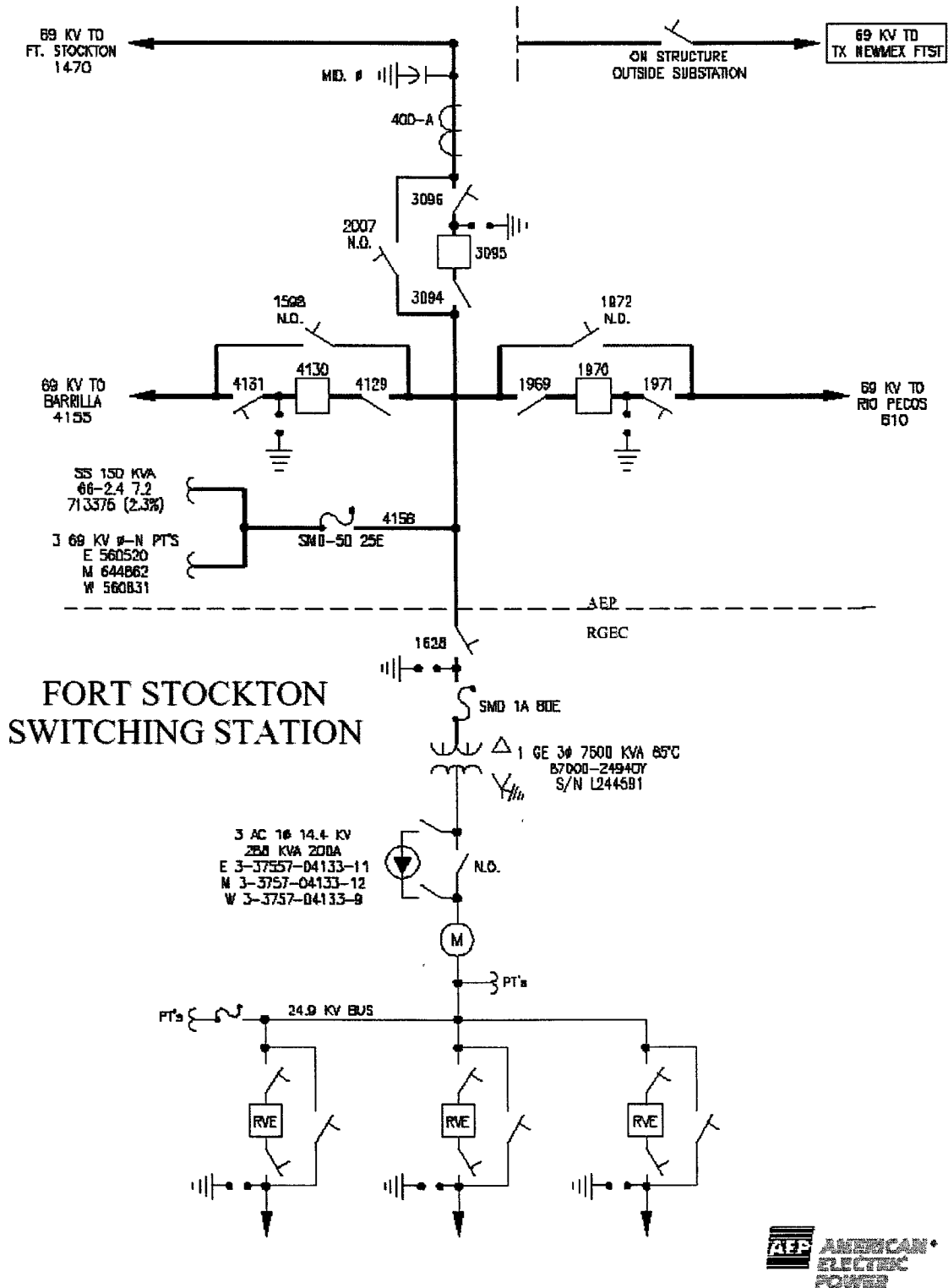
1. **Name:** **Fort Stockton Switching Station**
2. **Facility Location:** AEP's Fort Stockton Switching Station is located on State Hwy #285 approximately 16 miles northwest of the City of Fort Stockton, in Pecos County, Texas. The Point of Interconnection is located at the supply side of transformer bank switch #1628 inside the station where the AEP jumper conductors physically contact the connectors on the switch.
3. **Delivery Voltage:** 69 kV
4. **Meter Voltage and Location:** 25 kV inside the station
5. **Normal Operation of Interconnection:** Closed
6. **One Line Diagram Attached:** Yes
7. **Description of Facilities Owned by Each Party:**

AEP owns the Fort Stockton Switching Station and all the facilities within it except for those facilities owned by RGEC.

RGEC owns the transformer bank switch #1628, 60 kV lightning arrestors, 69 kV power fuse, transformers, regulators, distribution structure and switchgear.
8. **Operational Responsibilities of Each Party:**

Each Party operates and controls all facilities it owns. AEP has access to operate RGEC's transformer bank switch # 1628.
9. **Maintenance Responsibilities of Each Party:**

Each Party maintains all facilities it owns.
10. **Other Terms and Conditions:** None



FACILITY SCHEDULE NO. 5

- 1. Name: Illinois No. 4 (Pat Lee) (TERMINATED)**

FACILITY SCHEDULE NO. 6

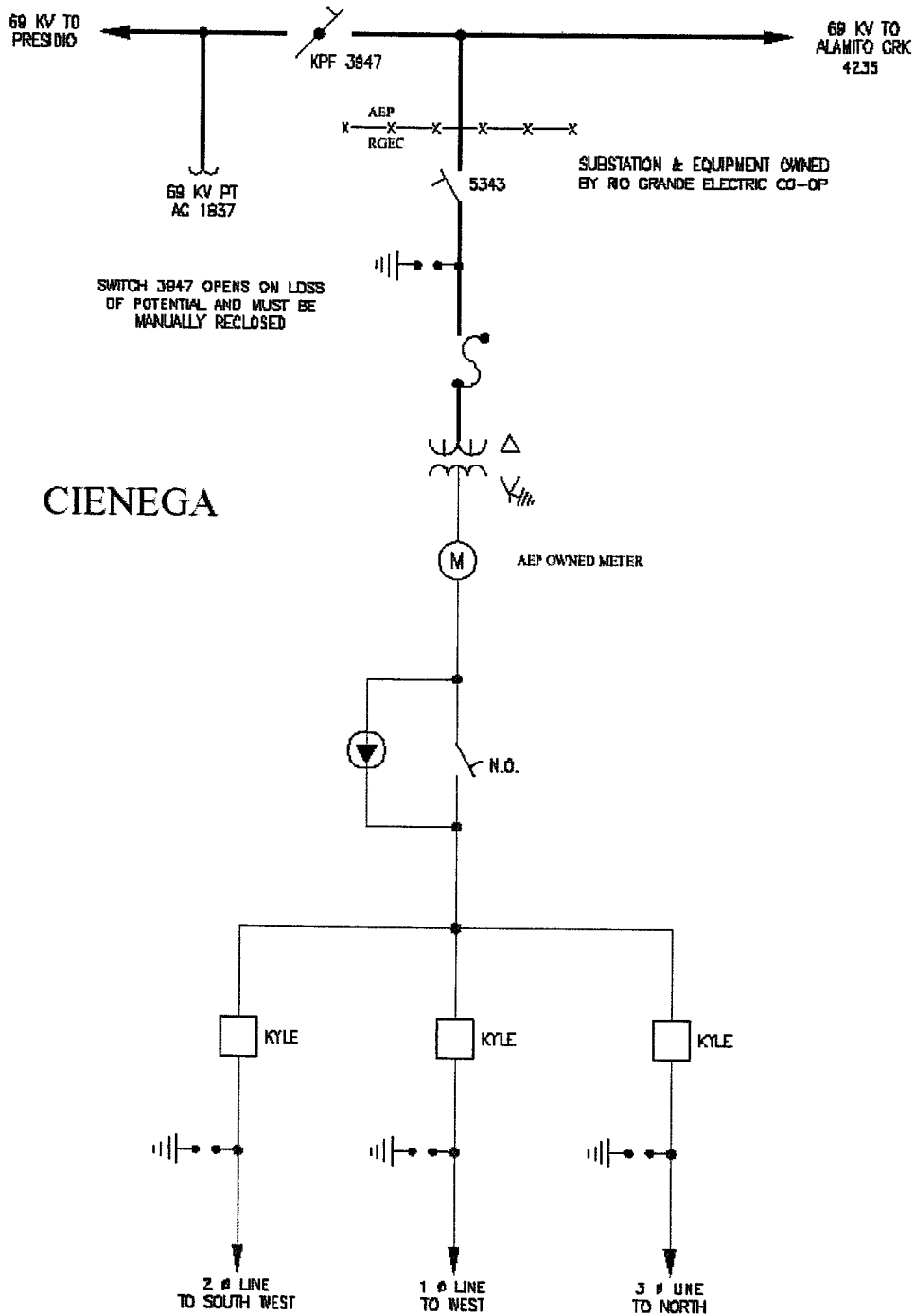
1. **Name:** **Cienega – Presidio Co.**
2. **Facility Location:** RGEC's Cienega Substation is located near US Hwy 67 approximately 17 miles south of the City of Marfa, in Presidio County, Texas. The Point of Interconnection is at the dead end line structure at the tap off of AEP's Presidio to Alamito Creek 69 kV transmission line where the RGEC conductors from the substation physically contact the connectors on AEP's transmission line.
3. **Delivery Voltage:** 69 kV
4. **Meter Voltage and Location:** 25 kV inside the substation
5. **Normal Operation of Interconnection:** Closed
6. **One Line Diagram Attached:** Yes
7. **Description of Facilities Owned by Each Party:**

RGEC owns the Cienega Substation and all the facilities within it except for the metering equipment which is owned by AEP. RGEC owns the 69 kV line from the substation to and including the switch (#5343) at the tap off of AEP's Presidio to Alamito Creek 69 kV transmission line.

AEP owns the Presidio to Alamito Creek 69 kV transmission line including the line switch (#3947) at the tap. AEP owns the metering equipment inside the substation
8. **Operational Responsibilities of Each Party:**

Each Party operates and controls all facilities it owns. AEP has access to operate RGEC's switch # 5343 inside the substation.
9. **Maintenance Responsibilities of Each Party:**

Each Party maintains all facilities it owns.
10. **Other Terms and Conditions:** None



CIENEGA



FACILITY SCHEDULE NO. 7

1. **Name:** **Parker Ranch**
2. **Facility Location:** Electric Transmission Texas (“ETT”) Illinois No. 4 Station is located approximately 11 miles south of Interstate Hwy 10 approximately 23 miles southwest of the City of Ozona, in Crockett County, Texas. The Point of Interconnection is located in the distribution side of the Station where an AEP jumper conductor from AEP’s single phase line physically contacts the RGEC 14.4 kV bus equipment.
3. **Delivery Voltage:** 14.4 kV
4. **Meter Voltage and Location:**
5. **Normal Operation of Interconnection:** Closed
6. **One Line Diagram Attached:** Yes
7. **Description of Facilities Owned by Each Party:**
 - ETT owns the Illinois No. 4 station and all the facilities within it except for the facilities owned by RGEC and AEP.
 - AEP owns the single phase 14.4 kV line, including structures, conductors, insulators, 7.2 kV transformer and the 7.2 kV line including structures, conductors, insulators serving the Parker Ranch
 - RGEC owns the power transformer, lightning arrestors, power fuses, transformers and reclosers
8. **Operational Responsibilities of Each Party:**

Each Party operates and controls all facilities it owns
9. **Maintenance Responsibilities of Each Party:**

Each Party maintains all facilities it owns.
10. **Other Terms and Conditions:** None

