



Control Number: 35077



Item Number: 186

Addendum StartPage: 0

**Project No. 35077**

RECEIVED  
10 MAY 18 PM 4:29  
PUBLIC UTILITY COMMISSION  
FILING CLERK

**First Amendment to  
INTERCONNECTION AGREEMENT  
Between  
City of Llano  
and  
LCRA Transmission Services Company**

**January 11 2010**

**FIRST AMENDMENT TO  
INTERCONNECTION AGREEMENT**

This First Amendment ("Amendment") is made and entered into this <sup>PB</sup> 11<sup>TH</sup> day of <sup>PB</sup> JANUARY, 200<sup>10</sup>~~8~~, between the City of Llano ("City") and the LCRA Transmission Services Corporation ("Corporation"), collectively referred to hereinafter as the Parties.

**WHEREAS**, the Corporation and the City entered into that certain Interconnect Agreement dated October 16, 2008 and

**WHEREAS**, the City has been leasing three distribution breakers from the Corporation and

**WHEREAS**, the City will replace those three distribution breakers with City owned breakers

**NOW, THEREFORE**, in consideration of the mutual promises and undertakings herein set forth, the Parties agree to amend the Agreement as follows:

1. Exhibit "A" attached to the Agreement is deleted in its entirety and the Exhibit "A" attached to this First Amendment is hereby added to the Agreement in lieu thereof.
2. Facility Schedule No. 1 (including the diagrams attached thereto) is deleted in its entirety and Facility Schedule No. 1 attached to this First Amendment is hereby added to the Agreement in lieu thereof.
3. Facility Schedule No. 1 (including the diagrams attached thereto) attached to this First Amendment will become effective upon execution of this First Amendment by the Parties.

Except as otherwise expressly provided for herein, the Agreement will continue in full force and effect in accordance with its terms.

IN WITNESS WHEREOF, the Parties have caused this First Amendment to be executed in several counterparts, each of which shall be deemed an original but all shall constitute one and the same instrument.

CITY OF LLANO

By: 

Name: Mike Reago

Title: Mayor

Date: 1/11/10

LCRA TRANSMISSION SERVICES  
CORPORATION

By: 

Name: Ray Pfefferkorn, P.E.

Title: LCRA Transmission Engineering Manager

Date: 1/7/10



**First Amendment**  
**EXHIBIT A**

[illegible]

First Amendment  
**FACILITY SCHEDULE NO. 1**

1. **Name:** Pittsburg Substation
2. **Facility Location:** The Pittsburg Substation is located at 1504 Birmingham Ave., Llano, Llano County, Texas 78643.
3. **Points of Interconnection:** There are nine (9) Points of Interconnection in the Pittsburg Substation generally described as:
  - where the incoming distribution line connects to the tubular bus between switches PG-91 and PG-93 at breaker PG-90.
  - where the jumper from breaker PG-90, passing through CT-9, connects to the 4 hole pad on switch PG-89.
  - where the jumper from breaker PG-90 connects to the 4 hole pad on switch PG-91.
  - where the incoming distribution line connects to the tubular bus between switches PG-101 and PG-103 at breaker PG-100.
  - where the jumper from breaker PG-100, passing through CT-10, connects to the 4 hole pad on switch PG-99.
  - where the jumper from breaker PG-100 connects to the 4 hole pad on switch PG-101.
  - where the incoming distribution line connects to the tubular bus between switches PG-111 and PG-113 at breaker PG-110.
  - where the jumper from breaker PG-110, passing through CT-11, connects to the 4 hole pad on switch PG-109.
  - where the jumper from breaker PG-110 connects to the 4 hole pad on switch PG-111.
4. **Transformation Services Provided by LCRA TSC:** Yes
5. **Metering Services Provided by LCRA TSC:** Yes
6. **Delivery Voltage:** 12.5 kV
7. **Metered Voltage and Location:** The metered voltage is 12.5 kV. The metering current transformers are located in each distribution bay. The metering potential transformer is located on the 12.5 kV operating bus.
8. **One Line Diagram Attached:** Yes
9. **Description of Facilities Owned by Each Party:**

**City of Llano owns:**

  - Three (3) distribution circuits including dead-end insulators that attach to the dead-end structure, conductor and hardware

- Three (3) distribution circuit breakers PG-90, PG-100 and PG-110 and associated foundations, jumpers, relaying and cabling

**LCRA TSC owns:**

The Pittsburg Substation including, but not limited to, the following items:

- One (1) power transformer PWT-1, T-2 with associated surge arresters
- One (1) circuit switcher CS-12295 with disconnect switch 12294 and bypass switch 12297
- One (1) 12.5 kV bus disconnect switch PG-74
- One (1) total circuit breaker PG-70 and associated relaying and cabling
- Five (5) distribution and total bays including A-frames, trusses, insulators, disconnect switches, surge arresters, 12.5 kV operating and transfer bus, bus potential transformers, and metering current transformers
- One (1) single phase current transformer CT-22
- Underfrequency relay panel
- Station Service SS-2
- Control house with battery

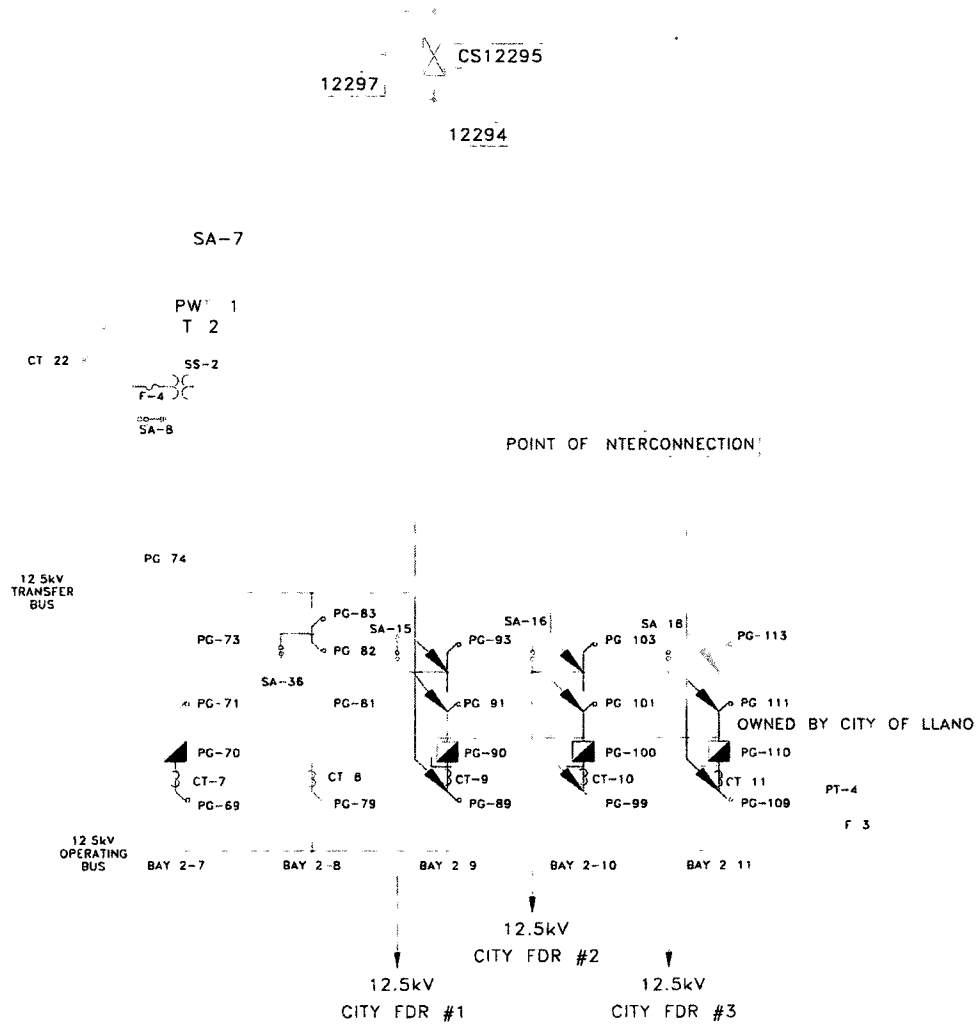
**10. Operational Responsibilities of Each Party:**

- The City will be responsible for the operation of the three (3) distribution circuit breakers serving the City feeders.
- LCRA TSC will be responsible for the operation from the low voltage total breaker through the power transformer to the high voltage equipment.

**11. Maintenance Responsibilities of Each Party:** Each Party will be fully responsible for the maintenance of the equipment it owns.

**12. Other Terms and Conditions:** The City and LCRA TSC are to share access to the substation by LCRA TSC locks in the gate and in the control house doors.

First Amendment  
**PITSBURG ONE-LINE DIAGRAM**



PITSBURG SUBSTATION

THIS IS NOT A COMPLETE ONE-LINE DIAGRAM.

FOR A COMPLETE ONE-LINE DIAGRAM OF THIS  
 SUBSTATION, REFER TO DRAWING S227-E-5J.