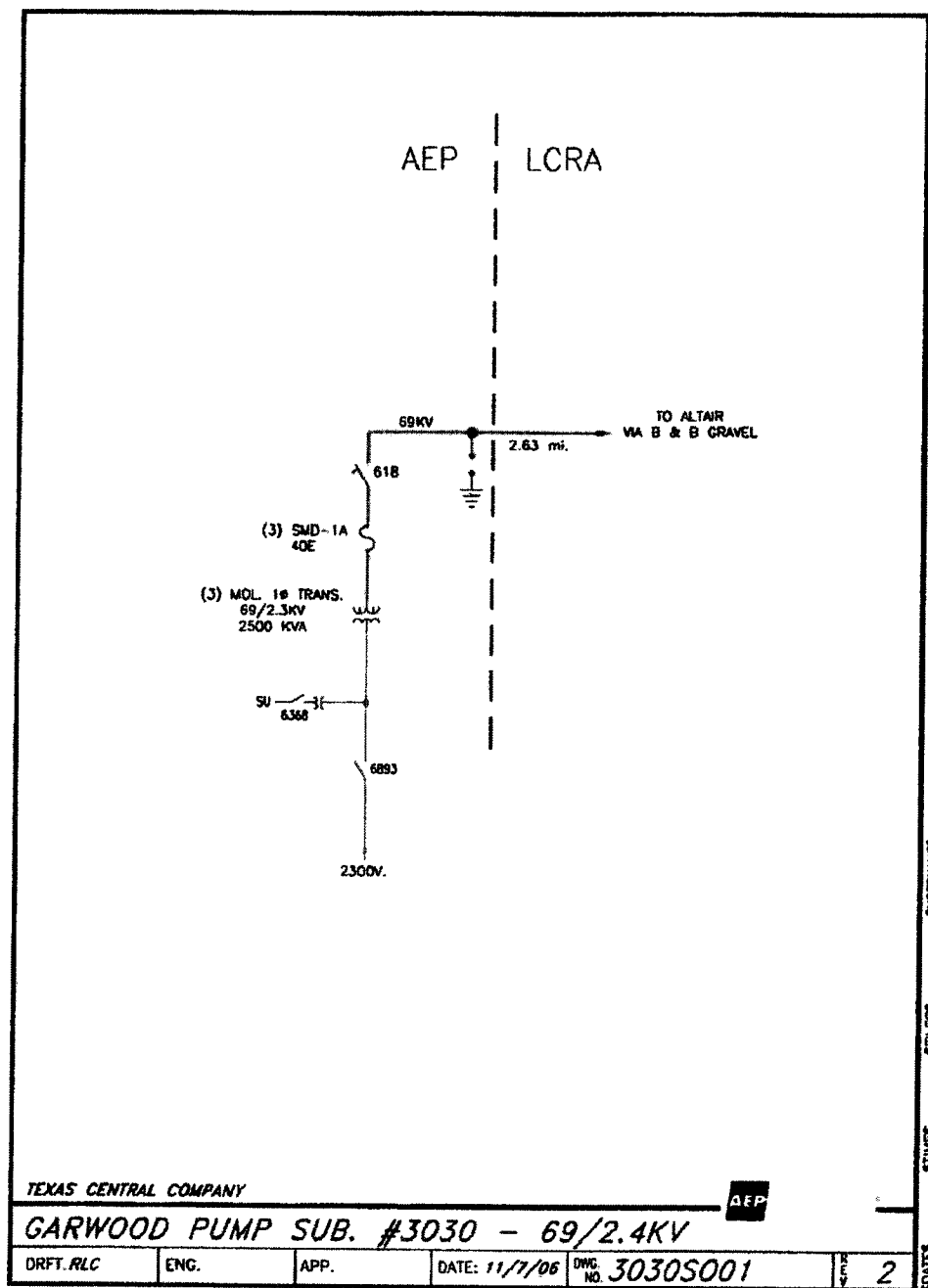


8. Cost Responsibilities of the Parties:

- Each Party will be fully responsible for the costs and liabilities related to the facilities it owns.
- Each Party will be responsible for all costs it incurs in connection with the establishment and maintenance of the Point of Interconnection in accordance with this Facility Schedule.

9. Other Terms and Conditions: None



FACILITY SCHEDULE NO. 67

1. Name: **Ideal Cement**
2. Location: The Ideal Cement Substation, a.k.a. Garwood Ideal Substation, is located north of Garwood, Texas in Colorado County. (From Garwood, go north 4.1 miles on Highway 71, turn west, travel 1.7 miles, turn left and travel 2.1 miles.) The Point of Interconnection is located where the AEP jumper conductors from the Ideal Cement Substation equipment physically contact the connectors on the 69 kV transmission line.
3. Delivery Voltage: 69 kV
4. Normal Operation of Interconnection: Closed
5. One-Line Diagram Attached: Yes
6. Facility Ownership Responsibilities of the Parties:

LCRA owns the following facilities:

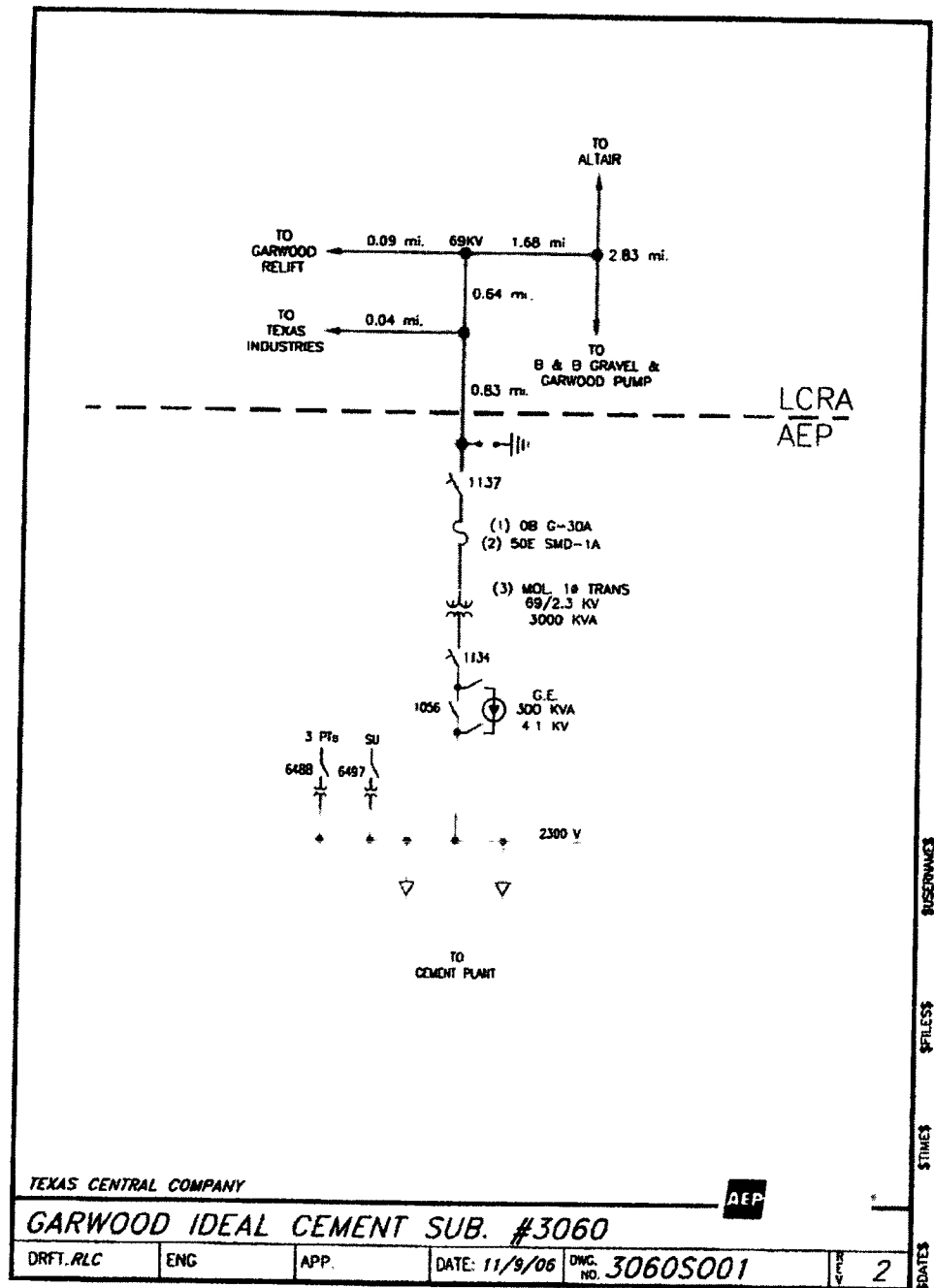
 - the following transmission lines comprised of structures, easements, conductors, insulators, and connecting hardware:
 - Altair to Garwood Relief Pump 69 kV transmission line
 - insulators and hardware on the deadend structures that terminate the 69 kV line onto the station structure

AEP owns the following facilities:

 - the Ideal Cement Substation including all facilities within it
 - any under-built distribution voltage circuits attached to the 69 kV transmission lines that terminate into the station
7. Facility Operation and Maintenance Responsibilities of the Parties:
 - LCRA controls and operates the following facilities:
 - 69 kV transmission line from the station to Altair
 - AEP controls and operates all other equipment in the station including the following:
 - 69 kV switch 1137
 - all distribution equipment in the station
 - Each Party maintains the facilities it owns that are provided for in this Facility Schedule. Maintenance of the facilities, including circuit breaker relays, that are owned by one Party that protect the facilities owned by the other Party, will be subject to review and approval by the other Party.
8. Cost Responsibilities of the Parties:

- Each Party will be fully responsible for the costs and liabilities related to the facilities it owns.
- Each Party will be responsible for all costs it incurs in connection with the establishment and maintenance of the Point of Interconnection in accordance with this Facility Schedule.

9. Other Terms and Conditions: None



FACILITY SCHEDULE NO. 68

1. Name: **Garwood Relief**
2. Location: The Garwood Relief Substation is located north of Garwood, Texas in Colorado County. (From Garwood travel north 4.2 miles on Highway 71, turn west, travel 1.7 miles, turn right on gravel road and travel 1.3 miles.) The Point of Interconnection is located at the termination of the 69 kV line that is tapped off of the Altair Switching Station to Garwood Pump Station 69 kV transmission line where the jumper conductors from the station equipment physically contact the connectors on the 69 kV transmission line conductors.
3. Delivery Voltage: 69 kV
4. Normal Operation of Interconnection: Closed
5. One-Line Diagram Attached: Yes
6. Facility Ownership Responsibilities of the Parties:

LCRA owns the following facilities:

 - the following transmission lines comprised of structures, easements, conductors, insulators, and connecting hardware:
 - Garwood Relief to Altair 69 kV transmission line
 - insulators and hardware on the deadend structures that terminate the 69 kV transmission tap line into the station

AEP owns the following facilities:

 - the Garwood Relief Substation including all facilities within it
 - any under-built distribution voltage circuits attached to the 69 kV transmission lines that terminate into the station
7. Facility Operation and Maintenance Responsibilities of the Parties:
 - LCRA controls and operates the following facilities:
 - 69 kV transmission tap line from the station to Altair
 - AEP controls and operates all other equipment in the station including the following:
 - 69 kV switch 108
 - all distribution equipment in the station
 - Each Party maintains the facilities it owns that are provided for in this Facility Schedule. Maintenance of the facilities, including circuit breaker relays, that are owned by one Party that protect the facilities owned by the other Party, will be subject to review and approval by the other Party.

8. **Cost Responsibilities of the Parties:**

- Each Party will be fully responsible for the costs and liabilities related to the facilities it owns.
- Each Party will be responsible for all costs it incurs in connection with the establishment and maintenance of the Point of Interconnection in accordance with this Facility Schedule.

9. **Other Terms and Conditions:** None

