



Control Number: 35077



Item Number: 183

Addendum StartPage: 0



**Project No. 35077**

RECEIVED

10 MAY 18 PM 4:30

PUBLIC UTILITY COMMISSION  
FILING CLERK

**INTERCONNECTION AGREEMENT**

**Between**

**Electric Transmission Texas, LLC**

**and**

**LCRA Transmission Services Company**

**April 12, 2010**

100

**INTERCONNECTION AGREEMENT  
BETWEEN  
ELECTRIC TRANSMISSION TEXAS, LLC  
AND  
LCRA TRANSMISSION SERVICES CORPORATION**

**DATED:** *April 12, 2010*

**INTERCONNECTION AGREEMENT  
BETWEEN  
ELECTRIC TRANSMISSION TEXAS, LLC  
AND  
LCRA TRANSMISSION SERVICES CORPORATION**

This Agreement is made and entered into this 12<sup>th</sup> day of April, 2010, by and between Electric Transmission Texas, LLC ("ETT"), a Delaware limited liability company, and LCRA Transmission Services Corporation, a nonprofit affiliated company of the Lower Colorado River Authority, a conservation and reclamation district of the State of Texas ("LCRA TSC") each sometimes hereinafter referred to individually as "Party" or both referred to collectively as "Parties".

**WITNESSETH**

WHEREAS, the Parties each own and operate electric utility systems in Texas for the transmission of electric power and energy; and

WHEREAS, the Parties are both members of the Electric Reliability Council of Texas ("ERCOT") and are subject to regulation by the Public Utility Commission of Texas ("PUCT"); and

WHEREAS, the Parties desire to provide for the interconnection of their respective electric systems in the respects, and under the terms and conditions set forth below;

NOW, THEREFORE, in consideration of the premises and of the mutual covenants and conditions herein set forth, the Parties agree as follows:

**ARTICLE I – EFFECTIVE DATE AND TERM**

This Agreement and any subsequent addendum to this Agreement shall become effective on the date of execution by both Parties. Unless otherwise mutually agreed, this Agreement shall remain in effect initially for a period of five (5) years from the effective date, and shall continue in effect thereafter for periods of two (2) years each unless canceled after such initial period or any subsequent period either by mutual agreement or by either Party upon at least twenty-four (24) months written notice to the other party. Upon termination of this Agreement, each Party shall discontinue the use of the facilities of the other and shall disconnect the Points of Interconnection.

**ARTICLE II – OBJECTIVE AND SCOPE**

2.1 It is the intent of the Parties, by this Agreement, to state the terms and conditions under which the Parties' transmission systems will be interconnected and to identify the facilities and equipment provided by each Party at the Points of Interconnection between their systems.

2.2 This Agreement shall apply to the ownership, construction, control, operation, and maintenance of those facilities which are or become specifically identified and described in the Facility Schedules which are attached hereto and incorporated herein.

2.3 This Agreement, including all Facility Schedules, constitutes the entire agreement and understanding between the Parties with regard to the interconnection of the facilities of the Parties at the Points of Interconnection expressly provided for in this Agreement. The Parties are not bound by or liable for any statement, representation, promise, inducement, understanding, or undertaking of any kind or nature (whether written or oral) with regard to the subject matter hereof if not set forth or provided for herein. This Agreement replaces all other agreements and undertakings, oral and written, between the Parties with regard to the subject matter hereof. It is expressly acknowledged that the Parties may have other agreements covering other services not expressly provided for herein. Such agreements are unaffected by this Agreement.

### **ARTICLE III – DEFINITIONS**

For purposes of this Agreement, the following definitions shall apply:

3.1 Agreement shall mean this Agreement with all exhibits, schedules, and attachments applying hereto, including any exhibits, schedules, attachments, and any amendments hereafter made.

3.2 ERCOT shall mean the Electric Reliability Council of Texas, Inc., or its successor in function.

3.3 ERCOT Requirements shall mean the ERCOT Operating Guides, ERCOT Metering Guidelines, and ERCOT Protocols, adopted by ERCOT, and approved by the PUCT, including any attachments or exhibits referenced in the ERCOT Protocols, as amended from time to time, that contain the scheduling, operating, planning, reliability, and settlement (including customer registration) policies, rules, guidelines, procedures, standards, and criteria of ERCOT.

3.4 Facility Schedule(s) shall mean the addendum(s) to this Agreement that describe the agreement on ownership, control, operation, and maintenance responsibilities of the Parties at the Point(s) of Interconnection and any additional terms and conditions of this Agreement that apply specifically to the Point(s) of Interconnection.

3.5 Good Utility Practice shall mean any of the practices, methods, and acts engaged in or approved by a significant portion of the electric utility industry during the relevant time period, or any of the practices, methods, and acts which, in the exercise of reasonable judgment in light of the facts known at the time the decision was made, could have been expected to accomplish the desired result at a reasonable cost consistent with good business practices, reliability, safety, and expedition. Good Utility Practice is not intended to be limited to the

optimum practice, method, or act to the exclusion of all others, but rather to be acceptable practices, methods, or acts generally accepted in the region. Good Utility Practice may include, but not be limited to, conformance with the applicable and consistently applied reliability criteria, standards and operating guides of ERCOT and the NERC, or successor organization(s).

3.6 NERC shall mean the North American Electric Reliability Corporation or its successor in function.

3.7 NERC Reliability Standards shall mean the mandatory electric reliability standards enforced by NERC.

3.8 Point(s) of Interconnection shall mean the points of interconnection that may be established under this Agreement, at which the electrical systems of the Parties are connected or may, by the closure of normally open switches, be connected.

3.9 PUCT shall mean the Public Utility Commission of Texas or its successor in function.

#### **ARTICLE IV – ESTABLISHMENT AND TERMINATION OF POINTS OF INTERCONNECTION**

4.1 The Parties agree to comply with NERC Reliability Standards as they relate to the interconnection of their facilities at the locations identified and described in the Facility Schedules which are or become attached hereto and incorporated herein.

4.2 The Parties agree to interconnect their facilities at the locations, and in accordance with the terms and conditions, specified in the attached Facility Schedule(s). All Points of Interconnection shall be specified in Exhibit A and the Facility Schedule(s) attached hereto and made a part hereof. The Facility Schedule(s) shall specify the responsibilities of the Parties with respect to ownership, control, operation, and maintenance of the interconnection facilities.

4.3 Unless otherwise provided in a Facility Schedule, each Party shall, at each Point of Interconnection, at its own risk and expense, design, install, or cause the design and installation of its transmission facilities (including all apparatus and necessary protective devices) on its side of the Point of Interconnection, so as to reasonably minimize the likelihood of voltage and frequency abnormalities, originating in the system of one Party, from affecting or impairing the system of the other Party, or other systems to which the system of such Party is interconnected. The Parties agree that all Points of Interconnection will be established in conformance with the ERCOT Requirements. The Parties agree to cause their systems to be constructed in accordance with specifications at least equal to those provided by the National Electrical Safety Code, approved by the American National Standards Institute, in effect at the time of construction. Except as otherwise provided in the Facility Schedules, each Party will be responsible for the equipment and facilities it owns on its side of the Point of Interconnection.



4.4 From time to time, a Point of Interconnection may be added, changed, modified, or deleted from this Agreement as mutually agreed by the Parties (not to be unreasonably withheld) and/or as ordered by a regulatory authority having jurisdiction thereof. Any such change, addition, or deletion shall be recorded in Exhibit A and a Facility Schedule in such a way that the numbering of the other Facility Schedules is not changed. Subject to regulatory approval, if required, either Party may terminate a Point of Interconnection on twelve (12) months advance written notice. Upon termination of a Point of Interconnection, each Party shall discontinue the use of the facilities of the other associated with the use of that Point of Interconnection and shall disconnect from that Point of Interconnection. The Parties agree to use reasonable efforts to coordinate the termination of a Point of Interconnection to minimize any disruption in service by either Party.

4.5 Subject to regulatory approval, if required, unless mutually agreed, neither Party shall have the right to disconnect from the other Party at any Point of Interconnection specified on Exhibit A and a Facility Schedule, originally attached to this Agreement or added subsequent to the execution of this Agreement, except as set forth in Section 4.4 above, or for reason of a material violation of the terms of this Agreement, for which opportunity to correct such violation was given under Paragraph 15.1 of this Agreement and such violation was not corrected in accordance with said Paragraph 15.1.

4.6 For facilities not specified in the Facility Schedules, or if either Party makes equipment changes or additions to the equipment at a Point of Interconnection, which may affect the operation or performance of the other Party's interconnection facilities, the Parties agree to notify the other Party, in writing, of such changes. Such changes shall be made in accordance with Good Utility Practice, ERCOT Requirements, the National Electrical Safety Code, other applicable codes, and standards in effect at the time of construction, and coordinated between the Parties.

4.7 Each Party agrees to provide, upon request, current as-built drawings to the other Party of the facilities owned by that Party at each Point of Interconnection.

4.8 The Parties agree to coordinate and cooperate on assessments of the reliability impacts to the interconnected transmission system for new facilities requesting connection to their distribution or transmission facilities, in accordance with the NERC Reliability Standards.

#### **ARTICLE V - OTHER SERVICES**

5.1 This Agreement is applicable only to the interconnection of the facilities of the Parties at the Points of Interconnection and does not obligate either Party to provide, or entitle either Party to receive, any service not expressly provided for herein. Each Party is responsible for making the arrangements necessary to receive any other service that either Party may desire from the other Party or any third party.

5.2 All transmission, transformation, metering, operations and maintenance, engineering, billing or other miscellaneous services will be provided and charged under agreements separate from this Agreement.

#### **ARTICLE VI - SYSTEM OPERATION AND MAINTENANCE**

6.1 Unless otherwise provided by the Facility Schedules, each Party shall, at each Point of Interconnection, at its own risk and expense, be responsible for the operation and maintenance of the facilities (including all apparatus and necessary protective devices) it owns or hereafter may own, so as to reasonably minimize the likelihood of voltage and frequency abnormalities, originating in the system of one Party, from affecting or impairing the system of the other Party, or other systems to which the Party is interconnected. The Parties agree that all Points of Interconnection will be operated and maintained in conformance with the ERCOT Requirements.

6.2 Unless otherwise provided by the Facility Schedules, each Party shall be responsible for the operation of the facilities it owns. The operation of the electrical network shall be such that power flows that enter and exit one Party's transmission facilities do not have undue impacts on the other Party's transmission facilities. Operational responsibility for facilities owned by one Party, but installed in another Party's substation or transmission line will be identified in the Facility Schedule for that particular Point of Interconnection.

6.3 During the term of this Agreement, the Parties will, consistent with Good Utility Practice, coordinate their operations to maintain continuity of service to their respective customers to the extent practicable. Planned maintenance by either Party that will cause a deviation from the normal power and energy flow at a Point of Interconnection will be scheduled at a mutually agreeable time. Except as otherwise permitted by the terms of this Agreement, no changes will be made in the normal operation of a Point of Interconnection without the mutual agreement of the Parties. The Parties will, to the extent necessary to support continuity of operations, coordinate the operation of protective devices on the facilities they own or operate in the proximity of the Points of Interconnection that might reasonably be expected to affect the operation of facilities on the other Party's system.

6.4 Planned maintenance plans for facilities, including circuit breakers, that terminate the transmission facilities owned by the other Party, will be subject to review and approval by the Party that owns the transmission facilities. Such approval will not be unreasonably withheld.

6.5 Each Party will provide the reactive requirements for its own system in accordance with the operating guidelines as established from time to time by ERCOT.

6.6 During periods of emergency conditions declared by ERCOT, or as necessary to restore customer service, either Party may operate equipment that is normally operated by the

other Party, provided that authorization to do so must first be received from the Party that normally operates the equipment, such authorization not to be unreasonably withheld or delayed. It shall be considered reasonable for the Party that normally operates such equipment to deny such a request by the other Party if the withholding Party will provide such operation within the time frame called for in the circumstances. Such operations by the other Party will be at no cost to the owner or normal operator of the equipment.

6.7 Each Party will determine the operating limits of the facilities that it owns and make such limits known to the Party operating those facilities. The operating Party of those facilities will not exceed those limits without prior approval of the Party owning the facilities.

#### **ARTICLE VII - RIGHTS OF ACCESS, EQUIPMENT INSTALLATION, AND REMOVAL**

7.1 Each Party shall permit duly authorized representatives and employees of the other Party to enter upon its premises for the purpose of inspecting, testing, repairing, renewing, or exchanging any or all of the equipment owned by such other Party that is located on such premises or for the purpose of performing any work necessary in the performance of this Agreement.

7.2 Each Party grants to the other Party permission to install, maintain, and/or operate, or cause to be installed, maintained, and/or operated, on its premises, the necessary equipment, apparatus, and devices required for the performance of this Agreement. Any such installation, maintenance, and operation to be performed, except in the case of emergencies, shall be performed only after a schedule of such activity has been submitted and agreed upon by the Parties.

7.3 Any and all equipment, apparatus, and devices placed or installed, or caused to be placed or installed by one Party on, or in, the premises of the other Party, shall be and remain the property of the Party owning and installing such equipment, apparatus, devices, or facilities, regardless of the mode and manner of annexation or attachment to real property. Upon the termination of any Point of Interconnection under this Agreement, the Party owning and installing such equipment, apparatus, devices, or facilities on the property of the other Party, shall 1) have the right to sell such equipment, apparatus, devices, or facilities to the other Party if the other Party wishes to purchase such equipment, apparatus, devices, or facilities or 2) to enter the premises of the other Party and, within a reasonable time, remove such equipment, apparatus, devices, or facilities, at no cost to the owner of the premises. If, upon the termination of any Point of Interconnection under this Agreement, equipment of a Party that is installed on the premises of the other Party is either not sold to the other Party or removed by the owning Party within a reasonable time, it shall be considered abandoned by the owning Party and may be disposed of by the other Party in the manner it shall determine appropriate; provided, however, that any net cost incurred by the disposing Party shall be reimbursed by the abandoning Party.

7.4 Each Party shall clearly mark their respective equipment, apparatus, devices, or facilities that are placed or installed on the other Party's premises with appropriate ownership identification, as practical.

7.5 Either Party may request the other Party to upgrade or modify the requested Party's terminal facilities at a Point of Interconnection. Any upgrades or modifications shall be made within a reasonable period of time when, (1) transmission planning studies demonstrate that the termination equipment may limit the transfer capability of the transmission system, and/or (2) the termination equipment is not in accordance with the ERCOT Operating Guides on system protection relaying. In the case of 69kV line terminations, where the ERCOT Operating Guides are silent, the requesting Party may propose upgrades or modifications based on its own standards and the requested party shall not unreasonably deny such upgrades or modifications.

#### **ARTICLE VIII – METERING AND RECORDS**

8.1 All metering equipment required herein shall be selected, installed, tested, operated, and maintained by the Party owning such metering equipment in accordance with Good Utility Practice and the ERCOT Requirements.

8.2 The Party that does not own the metering equipment shall be permitted to witness any testing, inspection, maintenance, or alteration of such metering equipment owned by the other Party. The owner of such equipment shall give reasonable advance notice of all tests and inspections so that representatives of the other Party may be present. After proper notification to the other Party, the owner may proceed with the scheduled tests or inspections regardless of whether a witness is present.

8.3 If any test or inspection of metering equipment shows that it does not meet the accuracy requirements established by the ERCOT Requirements, the meter or other equipment found to be inaccurate or defective shall be promptly repaired, adjusted, or replaced by the owner. Should metering equipment fail to register, the power and energy delivered and received shall be determined in accordance with the ERCOT Requirements.

8.4 As long as metering, telemetering or communications facilities are required by the ERCOT Requirements and are operated and maintained in accordance with ERCOT Requirements, the Party owning these facilities shall allow the other Party to read the meter by means of the existing telemetering and communications facilities. The other Party shall be responsible for any actual and reasonable incremental costs incurred by the owning Party to provide any meter reading capability over and above that which is required by the owning Party.

8.5 In the event that metering, telemetering, or communications facilities are no longer required by the ERCOT Requirements and the Party owning these facilities does not wish to continue to operate and maintain these facilities, the owning Party may remove these facilities three (3) months after it has notified in writing the other Party of its plans. If these facilities that

are no longer required by the ERCOT Requirements fail to operate accurately and/or the owning Party does not wish to maintain these facilities, the other Party shall be allowed to purchase/replace, own, operate, and maintain these facilities at its cost.

#### **ARTICLE IX – COMMUNICATION AND TELEMETERING FACILITIES**

9.1 Each Party shall provide, at its own expense, the necessary communication and telemetering facilities needed for the control and operation of its transmission system.

9.2 All communication and telemetering facilities required herein shall be selected, installed, tested, operated, and maintained by the Party owning such equipment in accordance with Good Utility Practice and the ERCOT Requirements.

#### **ARTICLE X - INDEMNIFICATION**

**EACH PARTY SHALL ASSUME ALL LIABILITY FOR, AND SHALL INDEMNIFY, DEFEND, AND SAVE HARMLESS THE OTHER PARTY, ITS DIRECTORS, OFFICERS, AND AGENTS (INCLUDING, BUT NOT LIMITED TO, DIRECTORS, OFFICERS, AND EMPLOYEES OF ITS AFFILIATES AND CONTRACTORS) FROM ANY AND ALL DAMAGES, LOSSES, CLAIMS, INCLUDING CLAIMS AND ACTIONS RELATING TO INJURY TO OR DEATH OF ANY PERSON (INCLUDING THE EMPLOYEES OF THE INDEMNIFIED PARTY) OR DAMAGE TO PROPERTY (INCLUDING PROPERTY OF THE INDEMNIFIED PARTY) DEMANDS, SUITS, RECOVERIES, COSTS AND EXPENSES, COURT COSTS, ATTORNEY FEES, AND ALL OTHER OBLIGATIONS BY OR TO THIRD PARTIES, ARISING OUT OF OR RESULTING FROM NEGLIGENCE OR OTHER FAULT IN THE DESIGN, CONSTRUCTION, OR OPERATION OF THEIR RESPECTIVE FACILITIES, DURING THE PERFORMANCE OF THIS AGREEMENT AND TO THE EXTENT PERMITTED BY LAW, EXCEPT IN CASES OF GROSS NEGLIGENCE OR INTENTIONAL WRONGDOING BY THE OTHER PARTY.**

#### **ARTICLE XI –NOTICES**

11.1 Notices of an administrative nature, including but not limited to a notice of termination, notice of default, request for amendment, change to a Point of Interconnection, or request for a new Point of Interconnection, shall be forwarded to the designees listed below for each Party and shall be deemed properly given if delivered in writing to the following:

(a) If to ETT:

Electric Transmission Texas, LLC

President  
400 W. 15<sup>th</sup> St., Suite 800  
Austin, TX 78701-1677

With copy to:

Manager, Transmission & Interconnection Services  
c/o American Electric Power Service Corp.  
P.O. Box 201  
Tulsa, OK 74102

(b) If to LCRA TSC:

LCRA Transmission Engineering Manager  
LCRA Transmission Services Corporation  
P.O. Box 220  
Austin, TX 78767-0220

11.2 The above listed names, titles, and addresses of either Party may be changed upon written notification to the other Party.

#### **ARTICLE XII - SUCCESSORS AND ASSIGNS**

12.1 Subject to the provisions of Section 12.2 below, this Agreement shall be binding upon and inure to the benefit of the permitted successors and assigns of the respective Parties.

12.2 Neither Party shall assign its interest in this Agreement in whole or in part without the prior written consent of the other Party. Such consent shall not be unreasonably withheld, delayed or conditioned, provided that neither Party will be required to consent to any assignment which would, in its sole judgment and among other reasons, subject it to additional federal or state regulation, result in the imposition of additional costs of administration which the Party requesting consent to assignment does not agree to reimburse, or in any way diminish the reliability of its system, enlarge its obligations or otherwise create or maintain an unacceptable condition. The respective obligations of the Parties under this Agreement may not be changed, modified, amended, or enlarged, in whole or in part, by reason of the sale, merger, or other business combination of either Party with any other person or entity. Notwithstanding the foregoing, a Party may assign, without the consent of the other Party, its interest in this Agreement, in whole or in part, to a successor to all or a substantial portion of the Party's transmission and distribution business; to any affiliate of the assigning Party with an equal or greater credit rating; to any transmission service provider with the legal authority and operational ability to satisfy the obligations of the assigning Party under this Agreement; or for collateral security purposes in connection with any financing or financial arrangements.

12.3 The several provisions of this Agreement are not intended to and shall not create rights of any character whatsoever in favor of any persons, corporations, or associations other than the Parties to this Agreement, and the obligations herein assumed are solely for the use and benefit of the Parties to this Agreement.

#### **ARTICLE XIII – GOVERNING LAW AND REGULATION**

13.1 This Agreement was executed in the State of Texas and must in all respects be governed by, interpreted, construed, and enforced in accordance with the laws thereof except as to matters exclusively controlled by the Constitution and statutes of the United States of America. This Agreement is subject to all valid applicable federal, state, and local laws, ordinances, rules and regulations of duly constituted regulatory authorities having jurisdiction.

13.2 This Agreement and all obligations hereunder, are expressly conditioned upon obtaining approval or authorization or acceptance for filing by any regulatory authority whose approval, authorization or acceptance for filing is required by law. Both Parties hereby agree to support the approval of this Agreement before such regulatory authority and to provide such documents, information and opinions as may be reasonably required or requested by either Party in the course of approval proceedings.

13.3 In the event that a regulatory authority having jurisdiction over the Parties orders a change in the terms of this Agreement, the Parties agree to negotiate in good faith a replacement term that will most nearly accomplish the purpose and intent of the original term consistent with the regulatory order. If the Parties cannot reach an agreement over the new term, and if the old term is an essential provision of this Agreement, either Party may elect to terminate this Agreement by providing sixty (60) days prior written notice of such election to the other Party. An election to terminate under this provision shall not affect either Party's duty to perform prior to the effective date of termination.

13.4 In the event any part of this Agreement is declared invalid by a court of competent jurisdiction, the remainder of this Agreement shall remain in full force and effect and shall constitute a binding agreement between the Parties provided, however, that if either Party determines, in its sole discretion, that there is a material change in this Agreement by reason of any provision or application being finally determined to be invalid, illegal, or unenforceable, that Party may terminate this Agreement upon sixty (60) days prior written notice to the other Party. An election to terminate under this provision shall not affect either Party's duty to perform prior to the effective date of termination.

#### **ARTICLE XIV – DEFAULT AND FORCE MAJEURE**

Neither Party shall be considered in default with respect to any obligation hereunder, other than the payment of money, if prevented from fulfilling such obligations by reason of any cause beyond its reasonable control, including, but not limited to, outages or interruptions due to

weather, accidents, equipment failures or threat of failure, strikes, civil unrest, injunctions or order of governmental or regulatory authority having jurisdiction ("Force Majeure"). If performance by either Party has been prevented by such event, the affected Party shall promptly and diligently attempt to remove the cause of its failure to perform, except that neither Party shall be obligated to agree to any quick settlement of any strike or labor disturbance, that, in the affected Party's opinion, may be inadvisable or detrimental, or to an appeal from any administrative or judicial ruling.

#### **ARTICLE XV - TERMINATION ON DEFAULT**

15.1 The term "Default" shall mean the failure of either Party to perform any obligation in the time or manner provided in this Agreement. No Default shall exist where such failure to discharge an obligation (other than the payment of money) is the result of Force Majeure as defined in this Agreement or the result of an act or omission of the other Party. Upon a Default, the non-defaulting Party shall give written notice of such Default to the defaulting Party. Except as provided in Section 15.2, the defaulting Party shall have thirty (30) days from receipt of the Default notice within which to cure such Default; provided however, if such Default is not capable of cure within thirty (30) days, the defaulting Party shall commence such cure within thirty (30) days after notice and continuously and diligently complete such cure within ninety (90) days from receipt of the Default notice; and, if cured within such time, the Default specified in such notice shall cease to exist.

15.2 If a Default is not cured as provided in this Section, or if a Default is not capable of being cured within the period provided for herein, the non-defaulting Party shall have the right to terminate this Agreement by written notice at any time until cure occurs, and be relieved of any further obligation hereunder and, whether or not that Party terminates this Agreement, to recover from the defaulting Party all amounts due hereunder, plus all other damages and remedies to which it is entitled at law or in equity. The provisions of this Section will survive termination of this Agreement.

15.3 The failure of a Party to this Agreement to insist, on any occasion, upon strict performance of this Agreement will not be considered to waive the obligations, rights, or duties imposed upon the Parties by this Agreement.

#### **ARTICLE XVI- MISCELLANEOUS PROVISIONS**

16.1 Any undertaking by a Party to the other Party under this Agreement shall not constitute the dedication of the electrical system or any portion thereof of that Party to the public or to the other Party, and it is understood and agreed that any such undertaking shall cease upon the termination of this Agreement.

**16.2 IN NO EVENT SHALL EITHER PARTY BE LIABLE UNDER ANY PROVISION OF THIS AGREEMENT FOR ANY LOSSES, DAMAGES, COSTS OR**



**EXPENSES FOR ANY SPECIAL, INDIRECT, INCIDENTAL, CONSEQUENTIAL, OR PUNITIVE DAMAGES, INCLUDING BUT NOT LIMITED TO LOSS OF PROFIT OR REVENUE, LOSS OF THE USE OF EQUIPMENT, COST OF CAPITAL, COST OF TEMPORARY EQUIPMENT OR SERVICES, WHETHER BASED IN WHOLE OR IN PART IN CONTRACT, IN TORT, INCLUDING NEGLIGENCE, STRICT LIABILITY, OR ANY OTHER THEORY OF LIABILITY; PROVIDED, HOWEVER, THAT DAMAGES FOR WHICH A PARTY MAY BE LIABLE TO THE OTHER PARTY UNDER ANOTHER AGREEMENT WILL NOT BE CONSIDERED TO BE SPECIAL, INDIRECT, INCIDENTAL, OR CONSEQUENTIAL DAMAGES HEREUNDER.**

16.3 This Agreement shall not affect the obligations or rights of either Party with respect to other agreements. Both Parties to this Agreement represent that there is no agreement or other obligation binding upon it, which, as such Party is presently aware, would limit the effectiveness or frustrate the purpose of this Agreement.

16.4 This Agreement may be amended only upon mutual agreement of the Parties, which amendment will not be effective until reduced in writing and executed by the Parties.

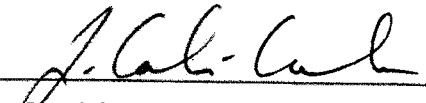
16.5 The descriptive headings of the various sections of this Agreement have been inserted for convenience of reference only and are to be afforded no significance in the interpretation or construction of this Agreement.

16.6 This Agreement will be executed in two or more counterparts, each of which is deemed an original, but all constitute one and the same instrument.

[signatures are on next page]

IN WITNESS WHEREOF, the Parties have caused this Agreement to be executed by the undersigned authorized representatives.

**ELECTRIC TRANSMISSION TEXAS, LLC**

By: J. Calvin Crowder (A)   
J. Calvin Crowder  
President

Date: 4-12-10

**LCRA TRANSMISSION SERVICES CORPORATION**

By: Ray Pfefferkorn  
Ray Pfefferkorn, P.E.  
LCRA Transmission Engineering Manager

Date: 4/6/10



### EXHIBIT A

FACILITY SCHEDULE NO.	LOCATION OF POINT(S) OF INTERCONNECTION (# of Points)	INTERCONNECTION VOLTAGE (KV)	EFFECTIVE DATE IN THIS AGREEMENT OR SUBSEQUENT AMENDMENT TO THIS AGREEMENT*
1	Firerock (2)	138	, 2010
2	Port Aransas (1)	69	, 2010
3	Laguna (2)	69	, 2010
4	Nueces Bay (2)	138	, 2010
5	Hamilton Road (1)	138	, 2010

## FACILITY SCHEDULE NO. 1

1. Name: **Firerock**
2. Location: The Firerock Substation is located near Santa Anna, Texas in Coleman County. There are two Points of Interconnection at the Firerock Substation. One is at the termination of the 138 kV transmission line from the Santa Anna Substation and the other is at the termination of the 138 kV transmission line from the Brownwood Substation. Both Points of Interconnection are at the point where the jumper conductors from the substation equipment physically contact the connectors on the 138 kV transmission line conductors.
3. Delivery Voltage: 138 kV
4. Metered Voltage: NA
5. Normal Operation of Interconnection: Closed
6. One-Line Diagram Attached: Yes
7. Facility Ownership Responsibilities of the Parties:

ETT owns the following facilities:

- the Firerock Substation\* and all the substation facilities within it
- jumper conductors from the station facilities to the Point(s) of Interconnection
- substation deadend structures that terminate all transmission lines into the station
- the Remote Terminal Unit (RTU) within the Firerock PST Substation
- a four-wire RTU communication circuit from the station to the AEP control center

LCRA TSC owns the following facilities:

- insulators and hardware on the substation deadend structures that terminate the 138 kV transmission lines from the Santa Anna and Brownwood stations
- the following transmission line(s) comprised of structures, conductors, insulators, easements, shield wires and connecting hardware:
  - Firerock to Santa Anna 138 kV transmission line
  - Firerock to Brownwood 138 kV transmission line (to tie with Oncor)

\*Note: AEP Texas North Company (AEP) owns the 69 kV metering equipment and an RTU within the Firerock Substation.

8. Facility Operation and Maintenance Responsibilities of the Parties:

- Each Party is responsible for the operation and control of the facilities it owns.
- Each Party maintains the facilities it owns that are provided for in this Facility Schedule. Maintenance of the facilities, including circuit breaker relays, that are owned by one Party that protect the facilities owned by the other Party, will be subject to review and approval by the other Party.

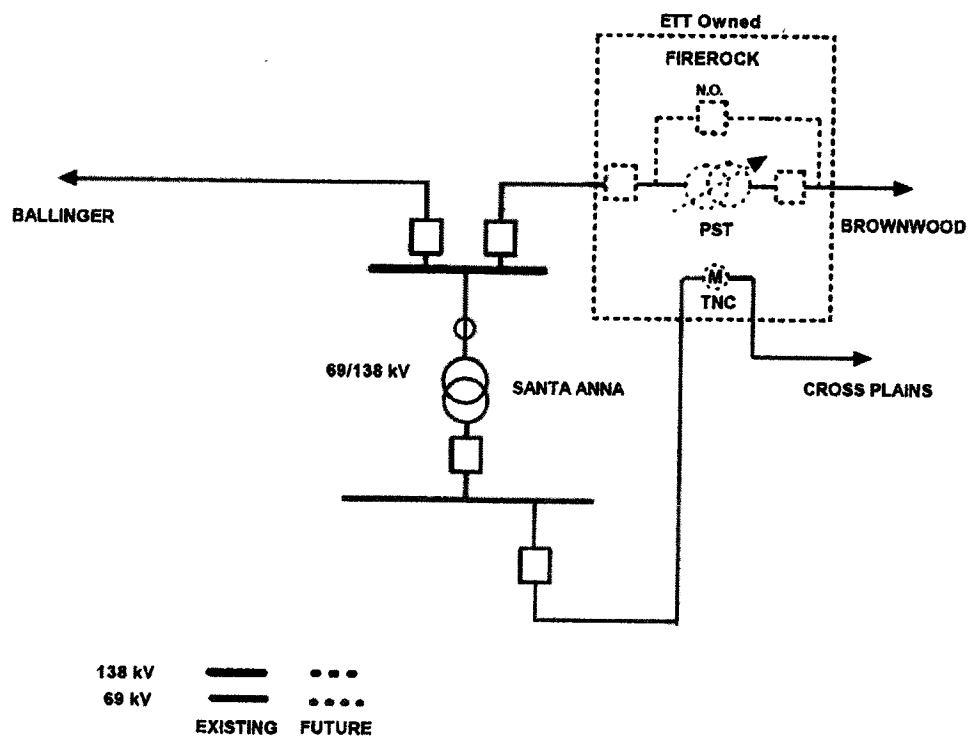
9. Cost Responsibilities of the Parties:

- Each Party will be fully responsible for the costs and liabilities related to the facilities it owns.
- Each Party will be responsible for all costs it incurs in connection with the establishment and maintenance of the Point of Interconnection in accordance with this Facility Schedule.

10. Other Terms and Conditions:

- ETT will poll the ETT RTU installed at the station and LCRA TSC will have access to the RTU data via the Inter-control Center Communications Protocol (ICCP) communication circuit between ERCOT and the LCRA TSC control center.

# FIREROCK



REVISED DATE: 06/18/09

## **FACILITY SCHEDULE NO. 2**

1.   **Name:**           **Port Aransas**
2.   **Location:**     The Port Aransas Substation is located in Port Aransas, Texas in Aransas County. The Point of Interconnection is at the termination of the 69 kV transmission line from the Mustang Island Substation where the jumper conductors from the substation equipment physically contact the connectors on the 69 kV transmission line conductors.
3.   **Delivery Voltage:**    69 kV
4.   **Metered Voltage:**     NA
5.   **Normal Operation of Interconnection:**        Closed
6.   **One-Line Diagram Attached:**                    Yes
7.   **Facility Ownership Responsibilities of the Parties:**

ETT owns the following facilities:

- the 69 kV transmission facilities within the Port Aransas Substation\*
- jumper conductors from the station facilities to the Point(s) of Interconnection
- deadend structures that terminate all transmission lines into the station

LCRA TSC owns the following facilities:

- insulators and hardware on the deadend structures that terminate the 69 kV transmission line from the Mustang Island station
- the following transmission line(s) comprised of structures, conductors, insulators, and connecting hardware:
  - o     69 kV transmission line from Port Aransas to Mustang Island

**\*Note:** AEP Texas Central Company owns the Port Aransas Substation property including the distribution facilities and the RTU within the substation and the 69 kV transmission line from Port Aransas to Aransas Pass.

8.   **Facility Operation and Maintenance Responsibilities of the Parties:**
  - Each Party is responsible for the operation and control of the facilities it owns.
  - Each Party maintains the facilities it owns that are provided for in this Facility Schedule. Maintenance of the facilities, including circuit breaker relays, that are owned by one Party that protect the facilities owned by the other Party, will be

subject to review and approval by the other Party.

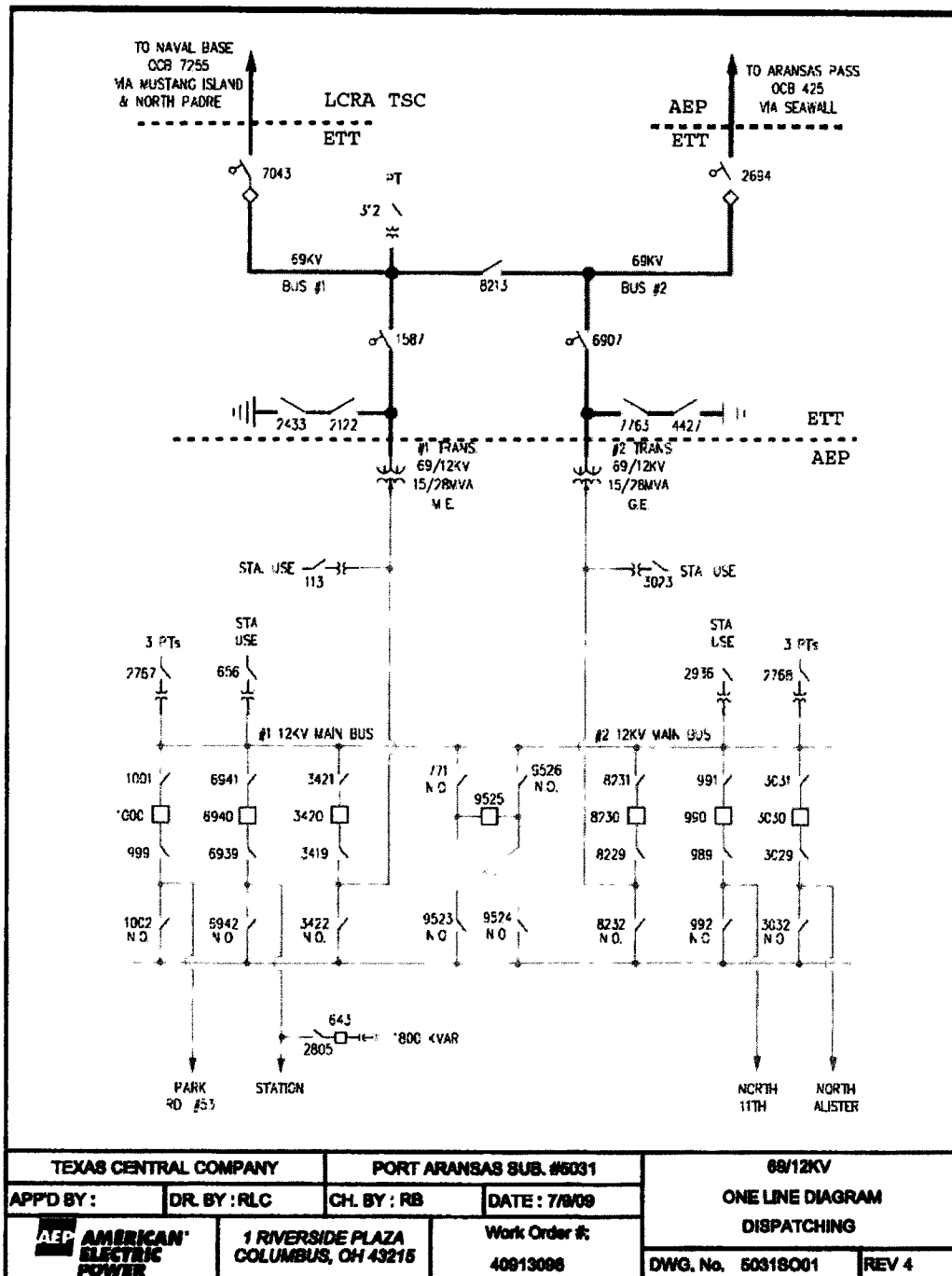
**9. Cost Responsibilities of the Parties:**

- Each Party will be fully responsible for the costs and liabilities related to the facilities it owns.
- Each Party will be responsible for all costs it incurs in connection with the establishment and maintenance of the Point of Interconnection in accordance with this Facility Schedule.

**10. Other Terms and Conditions:**

- ETT will be responsible for providing LCRA TSC data from the RTU installed inside the station via the Inter-control Center Communications Protocol (ICCP) communication circuit between ERCOT and the LCRA TSC control center.





### **FACILITY SCHEDULE NO. 3**

1. **Name:** **Laguna**
2. **Location:** The Laguna Substation is located in Corpus Christi, Texas in Nueces County. There are two Points of Interconnection at the Laguna Substation. One is at the termination of the 69 kV transmission line from the Naval Base Substation and the other is at the termination of the 69 kV transmission line from the Airline Substation. Both Points of Interconnection are at the point where the jumper conductors from the substation equipment physically contact the connectors on the 69 kV transmission line conductors.
3. **Delivery Voltage:** 69 kV
4. **Metered Voltage:** NA
5. **Normal Operation of Interconnection:** Closed
6. **One-Line Diagram Attached:** Yes
7. **Facility Ownership Responsibilities of the Parties:**

ETT owns the following facilities:

  - the 69 kV transmission facilities within the Laguna Substation\*
  - jumper conductors from the station facilities to the Point(s) of Interconnection

\*Note: AEP Texas Central Company (AEP) owns the Laguna Substation property including the distribution facilities and RTU within the substation.

LCRA TSC owns the following facilities:

  - insulators and hardware on the deadend structures that terminate the 69 kV transmission lines from the Naval Base and Airline stations
  - the following transmission line(s) comprised of easements, structures, conductors, insulators, and connecting hardware:
    - Laguna to Airline 69 kV transmission line
    - Laguna to Naval Base 69 kV transmission line
8. **Facility Operation and Maintenance Responsibilities of the Parties:**
  - Each Party is responsible for the operation and control of the facilities it owns.
  - Each Party maintains the facilities it owns that are provided for in this Facility

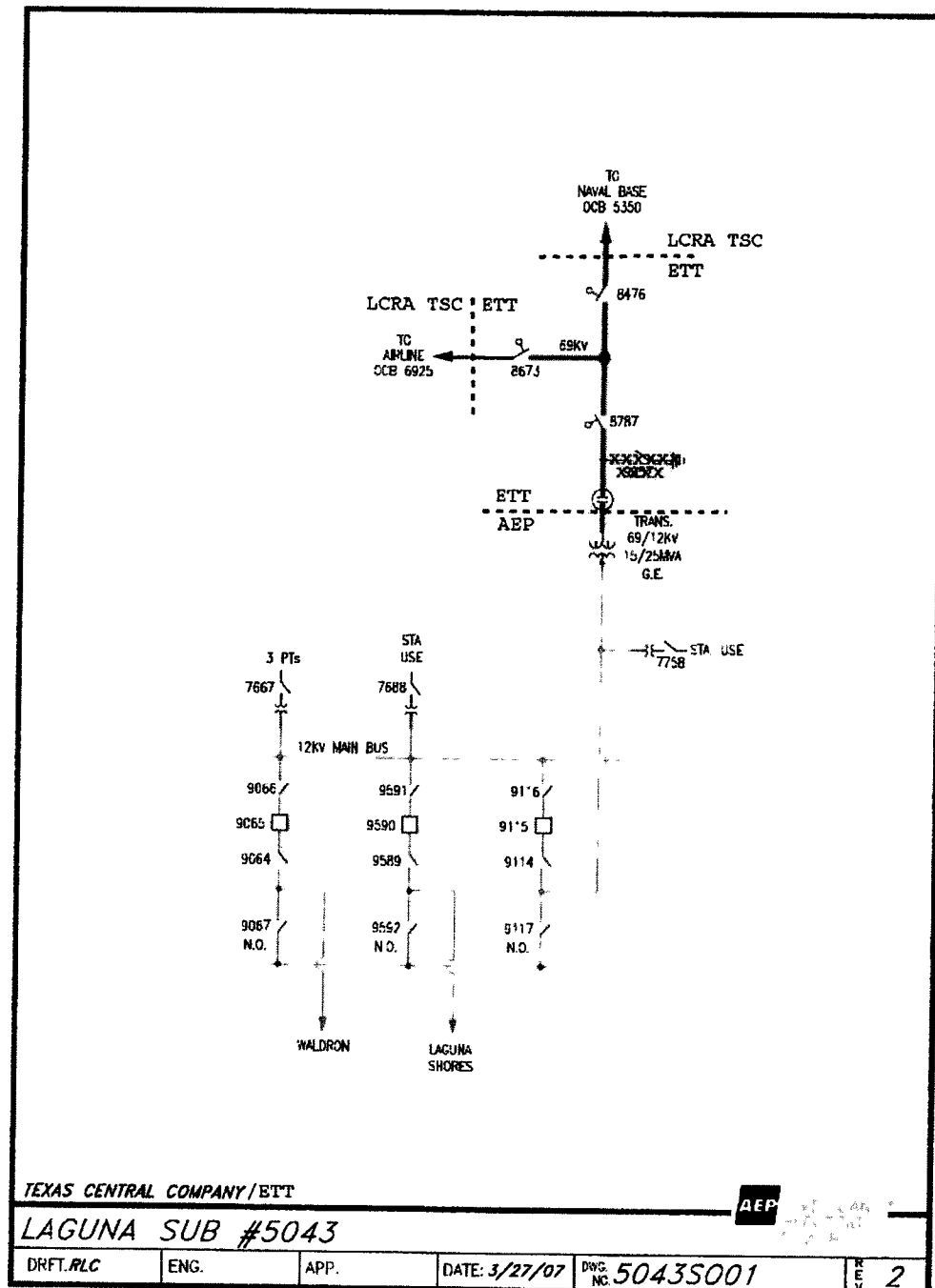
**Schedule. Maintenance of the facilities, including circuit breaker relays, that are owned by one Party that protect the facilities owned by the other Party , will be subject to review and approval by the other Party.**

**9. Cost Responsibilities of the Parties:**

- Each Party will be fully responsible for the costs and liabilities related to the facilities it owns.
- Each Party will be responsible for all costs it incurs in connection with the establishment and maintenance of the Point of Interconnection in accordance with this Facility Schedule.

**10. Other Terms and Conditions:**

- ETT will be responsible for providing LCRA TSC data from the RTU installed inside the station via the Inter-control Center Communications Protocol (ICCP) communication circuit between ERCOT and the LCRA TSC control center.



#### FACILITY SCHEDULE NO. 4

1. Name: **Nueces Bay**
2. Facility Location: The Nueces Bay Generating Station is located in Corpus Christi, in Nueces County, Texas. There are two Points of Interconnection at the Nueces Bay Station. One is at the termination of the 138 kV transmission line from the Citgo North Oak Park Station and the other is at the termination of the 138 kV transmission line from the Lon C. Hill Station. Both Points of Interconnection are at the point where the jumper conductors from the substation equipment physically contact the connectors on the 138kV transmission line conductors.
3. Delivery Voltage: 138 kV
4. Metered Voltage: NA
5. Normal Operation of Interconnection: Closed
6. One-Line Diagram Attached: Yes
7. Facility Ownership Responsibilities of the Parties:
  - ETT owns the following facilities:
    - Nueces Bay Station and all the facilities within it
    - transmission line relay protection panels and all associated equipment for the LCRA TSC transmission lines
    - the Remote Terminal Unit (RTU) within the Nueces Bay 138 kV Substation
    - jumper conductors from the station facilities to the Points of Interconnection
    - deadend structures that terminate all transmission lines into the station
  - LCRA TSC owns the following facilities:
    - insulators and hardware on the deadend structures that terminate the 138 kV transmission lines from the Lon C. Hill and Citgo North Oak Park stations.
    - the following transmission lines comprised of underground/underwater cable, conductors, insulators, connecting hardware, and structures;
      - Nueces Bay to Citgo North Oak Park 138 kV cable and transmission line
      - Nueces Bay to Lon C. Hill 138 kV transmission line
8. Facility Operation and Maintenance Responsibilities of the Parties:
  - Each Party is responsible for the operation and control of the facilities it owns.

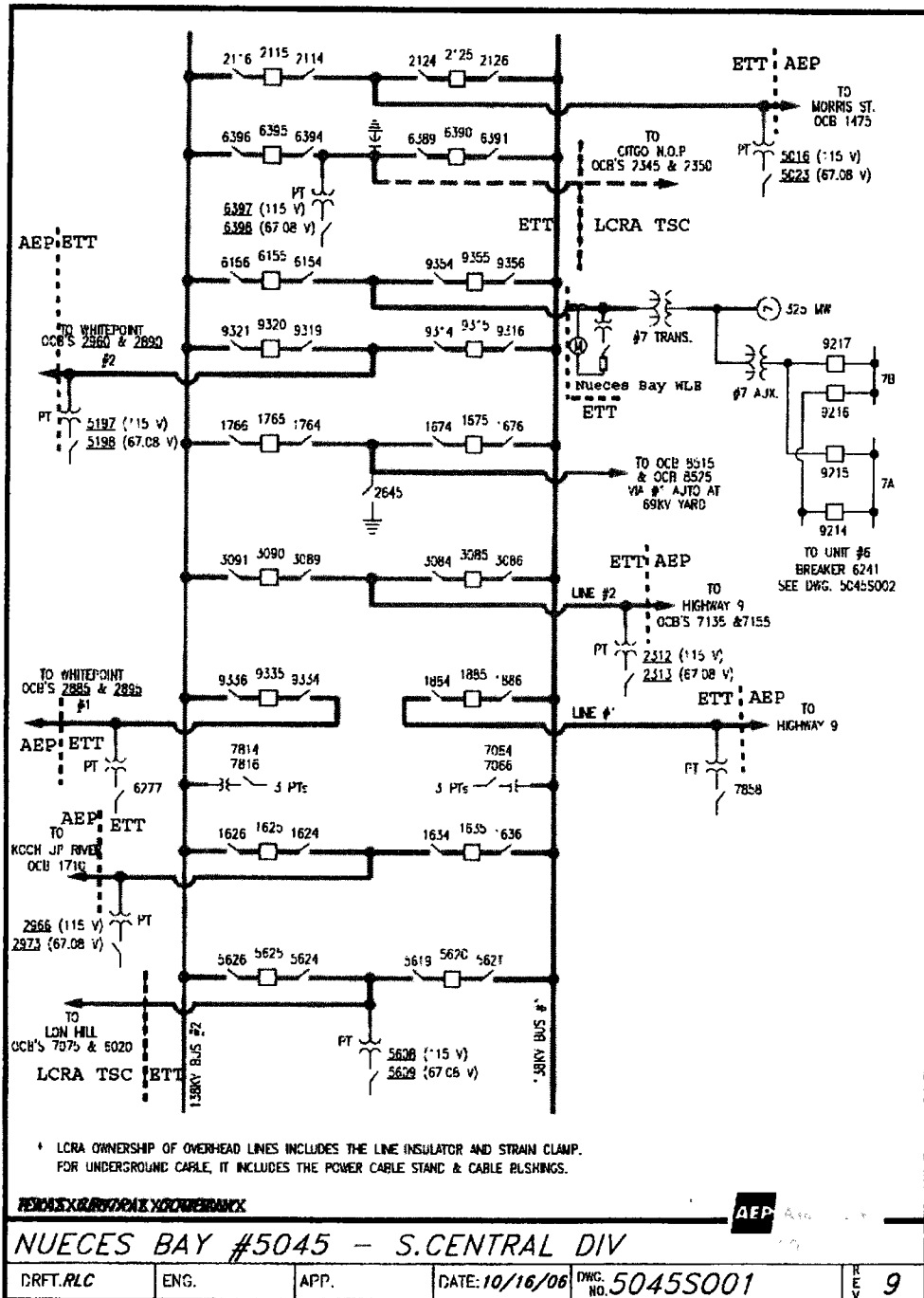
- Each Party maintains the facilities it owns that are provided for in this Facility Schedule. Maintenance of the facilities, including circuit breaker relays, that are owned by one Party that protect the facilities owned by the other Party, will be subject to review and approval by the other Party.

9. Cost Responsibilities of the Parties:

- Each Party will be fully responsible for the costs and liabilities related to the facilities it owns.
- Each Party will be responsible for all costs it incurs in connection with the establishment and maintenance of the Point of Interconnection in accordance with this Facility Schedule.

10. Other Terms and Conditions:

- ETT will poll the ETT RTU installed inside the Nueces Bay 138 kV Substation and LCRA TSC will have access to the RTU data via the Inter-control Center Communications Protocol (ICCP) communication circuit between ERCOT and the LCRA TSC control center.



## FACILITY SCHEDULE NO. 5

1.   **Name:**                   **Hamilton Road**
2.   **Location:**       The Hamilton Road Substation is located in Del Rio, Texas in Val Verde County. The Point of Interconnection is at the termination of the 138 kV transmission line from the Brackettville Substation where the jumper conductors from the substation equipment physically contact the connectors on the 138 kV transmission line conductors.
3.   **Delivery Voltage:**    138 kV
4.   **Metered Voltage:**    NA
5.   **Normal Operation of Interconnection:**       Closed
6.   **One-Line Diagram Attached:**                   Yes
7.   **Facility Ownership Responsibilities of the Parties:**
  - ETT owns the following facilities:
    - the Hamilton Road Substation and all the substation facilities within it
    - jumper conductors from the station facilities to the Point(s) of Interconnection
    - the substation deadend structure that terminates the 138 kV transmission line from the Brackettville Substation
  - LCRA TSC owns the following facilities:
    - insulators and hardware on the deadend structure that terminates the 138 kV transmission line from the Brackettville station
    - the following transmission line(s) comprised of structures, conductors, insulators, easements, shield wires and connecting hardware:
      - Hamilton Road to Brackettville 138 kV transmission line
8.   **Facility Operation and Maintenance Responsibilities of the Parties:**
  - Each Party is responsible for the operation and control of the facilities it owns.
  - Each Party maintains the facilities it owns that are provided for in this Facility Schedule. Maintenance of the facilities, including circuit breaker relays, that are owned by one Party that protect the facilities owned by the other Party, will be subject to review and approval by the other Party.
9.   **Cost Responsibilities of the Parties:**



- Each Party will be fully responsible for the costs and liabilities related to the facilities it owns.
- Each Party will be responsible for all costs it incurs in connection with the establishment and maintenance of the Point of Interconnection in accordance with this Facility Schedule.

10. Other Terms and Conditions:

- ETT will be responsible for providing LCRA TSC data from the RTU installed inside the station via the Inter-control Center Communications Protocol (ICCP) communication circuit between ERCOT and the LCRA TSC control center.

