

### FACILITY SCHEDULE NO. 64

1. Name: **El Campo**
2. Location: The El Campo Substation is located at 506 Marion Street in El Campo, Texas in Wharton County. There are two Points of Interconnection at the El Campo Substation. One is at the termination of the 69 kV transmission line from the Garwood City Substation and the other is at the termination of the 69 kV transmission line from the Altair Switching Station. Both Points of Interconnection are located at the point where the jumper conductors from the station equipment physically contact the connectors on the 69 kV transmission line conductors.
3. Delivery Voltage: 69 kV
4. Normal Operation of Interconnection: Closed
5. One-Line Diagram Attached: Yes
6. Facility Ownership Responsibilities of the Parties:

AEP owns the following facilities:

- the El Campo Substation including all the facilities within it
- jumper conductors from the station facilities to the Point(s) of Interconnection
- deadend structures that terminate all transmission lines into the station
- any under-built distribution voltage circuits attached to the 69 kV transmission lines that terminate into the station

LCRA owns the following facilities:

- the following transmission lines comprised of structures, easements, conductors, insulators, and connecting hardware:
  - El Campo to Garwood City 69 kV transmission line
  - El Campo to Altair 69 kV transmission line
- insulators and hardware on the deadend structures that terminate the 69 kV transmission line from the Garwood City Substation
- insulators and hardware on the deadend structures that terminate the 69 kV transmission line from the Altair Switching Station

7. Facility Operation and Maintenance Responsibilities of the Parties:
  - AEP controls and operates the El Campo Station, including all facilities within it
  - AEP controls and operates all transmission lines that terminate into the station except for the 69 kV lines from the Eagle Lake and Altair substations

- LCRA controls and operates the following facilities:
  - 69 kV transmission line to Eagle Lake, via Garwood
  - 69 kV transmission line to Altair
- Each Party maintains the facilities it owns that are provided for in this Facility Schedule. Maintenance of the facilities, including circuit breaker relays, that are owned by one Party that protect the facilities owned by the other Party, will be subject to review and approval by the other Party.

8. Cost Responsibilities of the Parties:

- Each Party will be fully responsible for the costs and liabilities related to the facilities it owns.
- Each Party will be responsible for all costs it incurs in connection with the establishment and maintenance of the Point of Interconnection in accordance with this Facility Schedule.

9. Other Terms and Conditions:                      None                      —



### FACILITY SCHEDULE NO. 65

1. Name: **B&B Gravel**
2. Location: The B&B Gravel Substation is located at 6747 State Hwy 71, Garwood, Texas in Colorado County. The Point of Interconnection is located where the top connectors on the AEP transformer switch connects to the LCRA 69 kV jumpers.
3. Delivery Voltage: 69 kV
4. Normal Operation of Interconnection: Closed
5. One-Line Diagram Attached: Yes
6. Facility Ownership Responsibilities of the Parties:

LCRA owns the following facilities:

- the following transmission lines comprised of structures, easements, conductors, insulators, and connecting hardware:
  - B&B Gravel to Altair 69 kV transmission line
  - B&B Gravel to Garwood Pump 69 kV transmission line
- transmission line wood H-frame structure, including equipment mounting cross arms for 69 kV line switch 20391
- transmission line dead-end insulator string and termination hardware
- 69 kV sectionalizing switch 20391
- jumpers from switch 20391 to the 69 kV line and to switch 3927

AEP owns the following facilities:

- the B&B Gravel Substation including all facilities within it
- the following equipment on the H-frame structure owned by LCRA:
  - 69 kV switch 3927 and associated mounting hardware
  - 69 kV arresters and associated mounting hardware
  - 69 kV fuses and associated mounting hardware
- any under-built distribution voltage circuits attached to the 69 kV transmission lines that terminate into the station

7. Facility Operation and Maintenance Responsibilities of the Parties:

- LCRA controls and operates the following facilities:
  - 69 kV switch 20391 and associated 69 kV transmission line to Altair and Garwood Pump
- AEP controls and operates all other equipment in the station including the following:

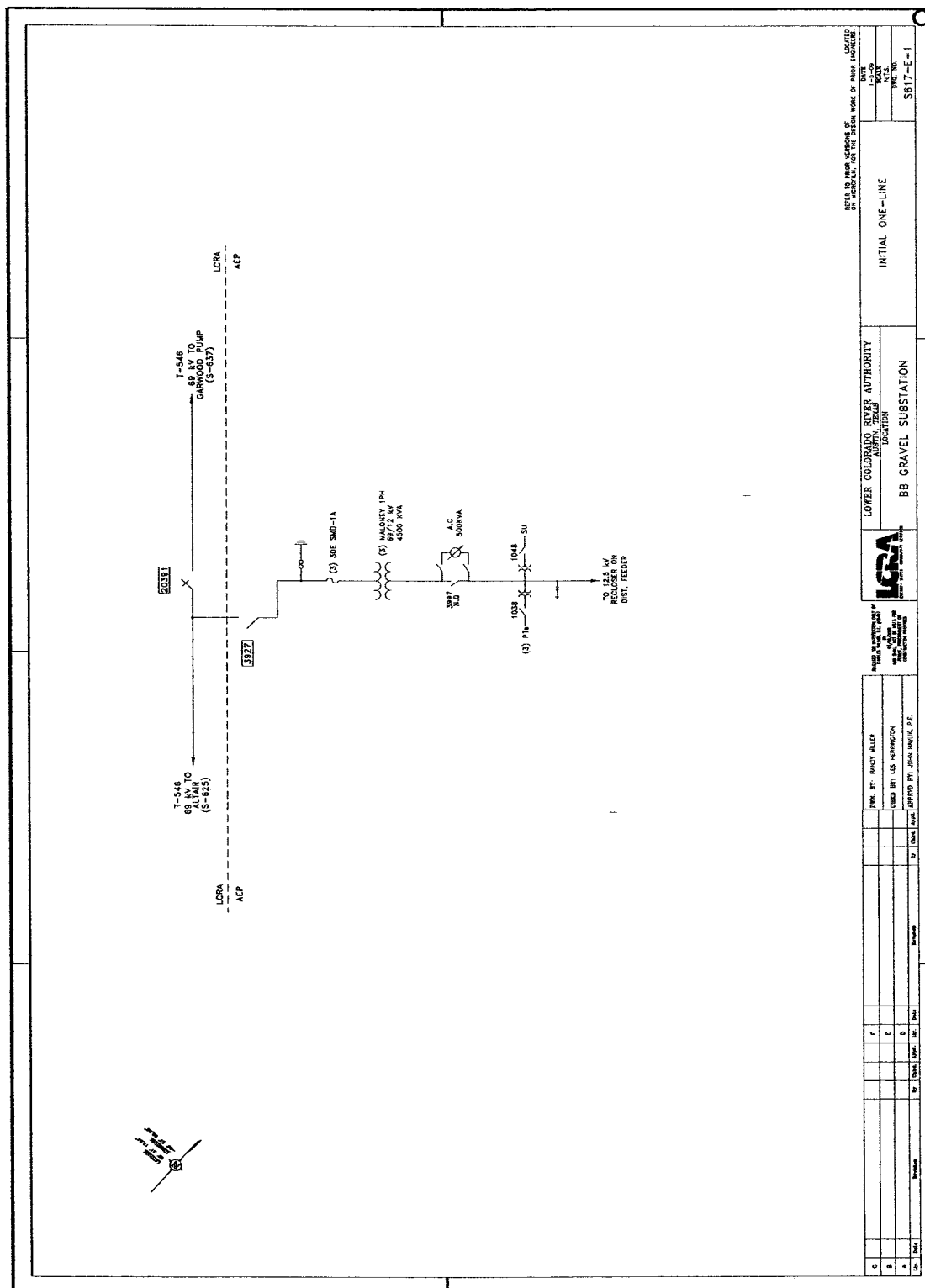
- 69 kV switch 3927
- all distribution equipment in the station
- Each Party maintains the facilities it owns that are provided for in this Facility Schedule. Maintenance of the facilities, including circuit breaker relays, that are owned by one Party that protect the facilities owned by the other Party, will be subject to review and approval by the other Party.

8. Cost Responsibilities of the Parties:

- Each Party will be fully responsible for the costs and liabilities related to the facilities it owns.
- Each Party will be responsible for all costs it incurs in connection with the establishment and maintenance of the Point of Interconnection in accordance with this Facility Schedule.

9. Other Terms and Conditions: None

First Revised Service Agreement No.  
Original Sheet No 189



Effective: March 29, 2010

### FACILITY SCHEDULE NO. 66

1. Name: **Garwood Pump**
2. Location: The Garwood Pump Substation is located north of Garwood, Texas in Colorado County. (From Garwood, travel north 4.9 miles on Highway 71, turn east at canal and follow the gravel road 1.7 miles.) The Point of Interconnection is located at the termination of the 69 kV transmission line continuing from the B&B Gravel Substation where the AEP jumper conductors from the Garwood Pump Substation equipment physically contact the connectors on the 69 kV transmission line conductors.
3. Delivery Voltage: 69 kV
4. Normal Operation of Interconnection: Closed
5. One-Line Diagram Attached: Yes
6. Facility Ownership Responsibilities of the Parties:  
  
LCRA owns the following facilities:
  - the following transmission lines comprised of structures, easements, conductors, insulators, and connecting hardware:
    - Garwood Pump to B&B Gravel 69 kV transmission line
  - insulators and hardware on the structures that terminate the 69 kV transmission line onto the station structure  
AEP owns the following facilities:
  - the Garwood Pump Substation including all facilities within it
  - any under-built distribution voltage circuits attached to the 69 kV transmission lines that terminate into the station
7. Facility Operation and Maintenance Responsibilities of the Parties:
  - LCRA controls and operates the following facilities:
    - 69 kV transmission line from the station to B&B Gravel station.
  - AEP controls and operates all other equipment in the station including the following:
    - 69 kV switch 618
    - all distribution equipment in the station

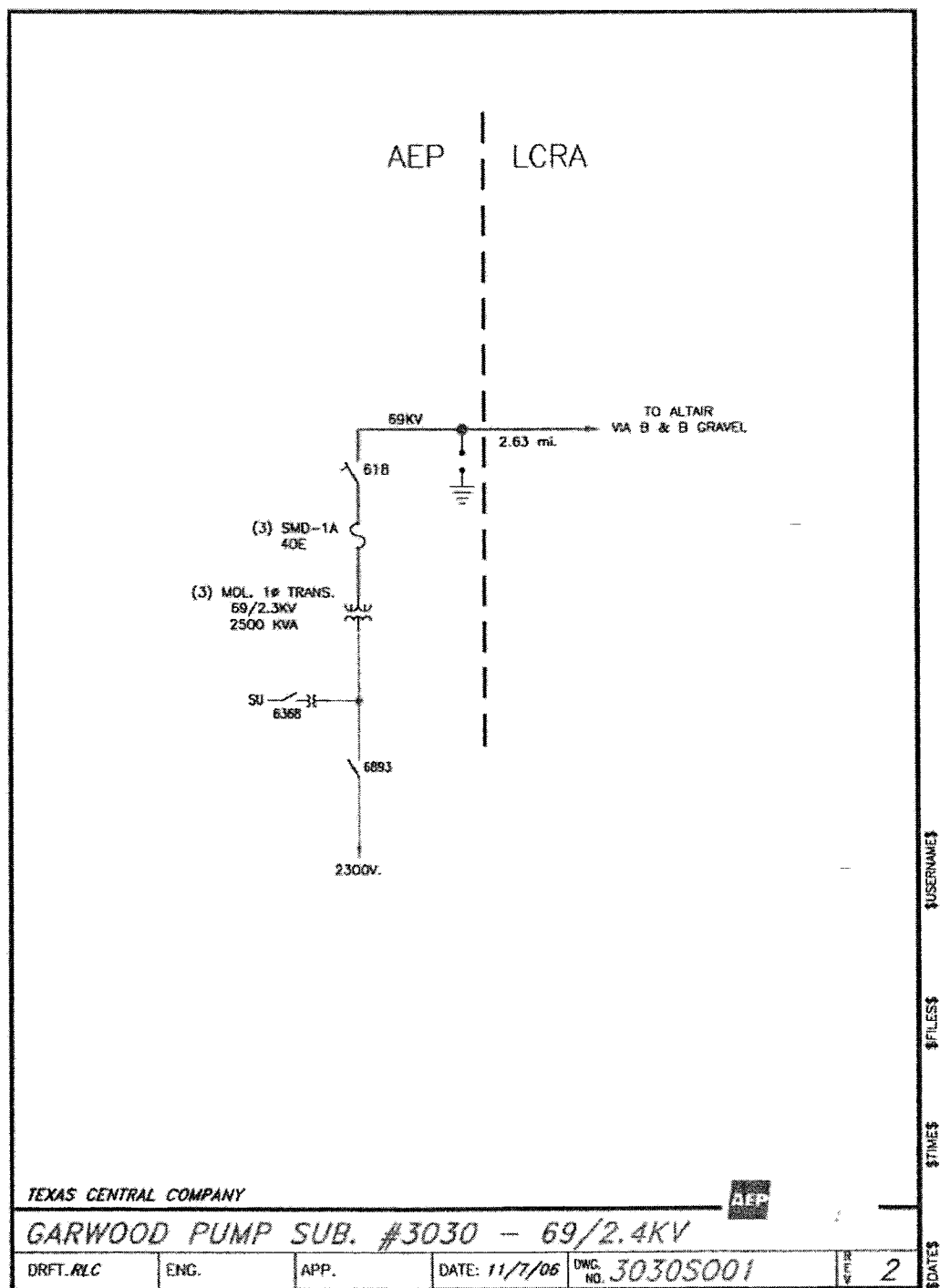
- Each Party maintains the facilities it owns that are provided for in this Facility Schedule. Maintenance of the facilities, including circuit breaker relays, that are owned by one Party that protect the facilities owned by the other Party, will be subject to review and approval by the other Party

8. Cost Responsibilities of the Parties:

- Each Party will be fully responsible for the costs and liabilities related to the facilities it owns.
- Each Party will be responsible for all costs it incurs in connection with the establishment and maintenance of the Point of Interconnection in accordance with this Facility Schedule.

9. Other Terms and Conditions: None





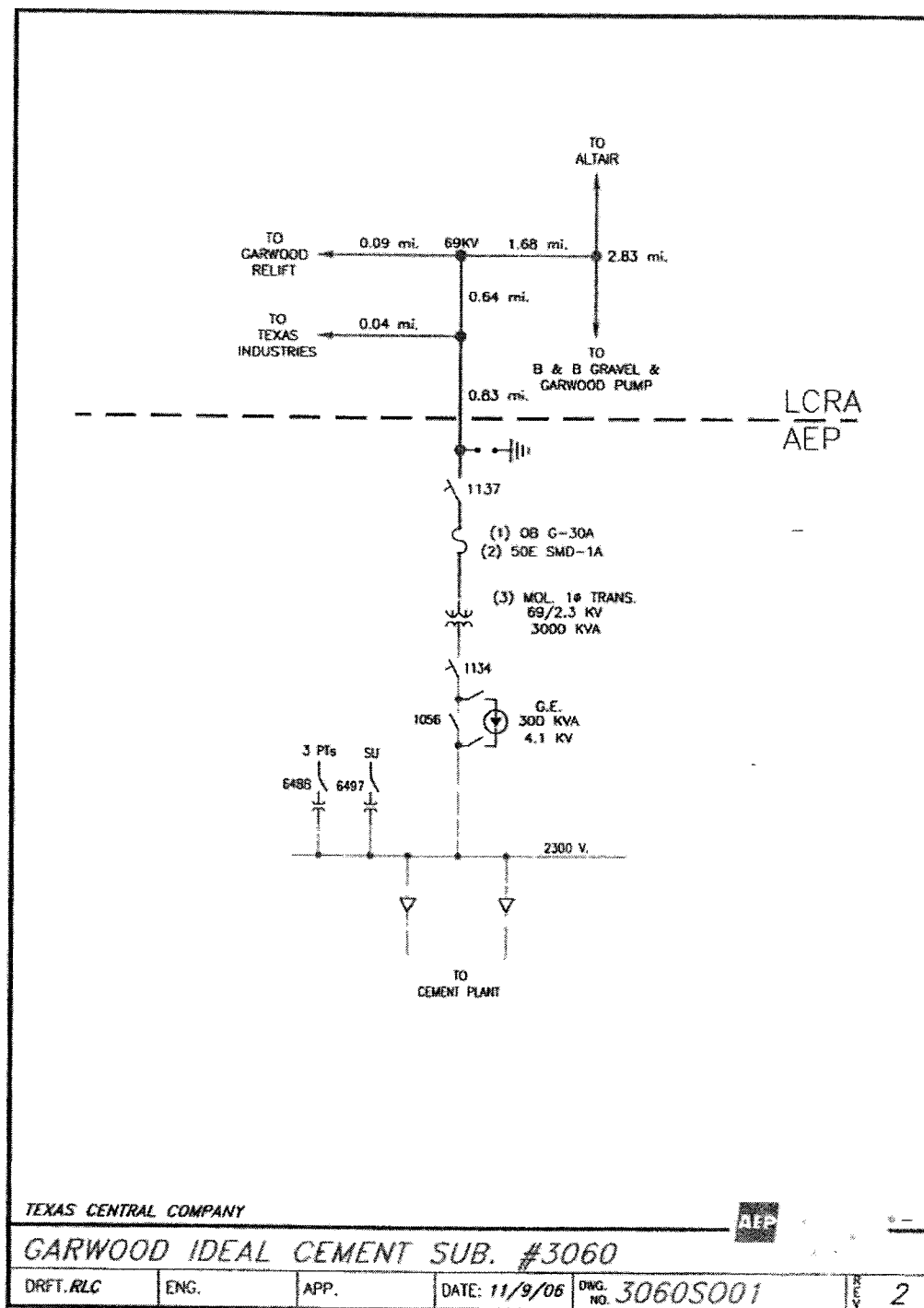
### FACILITY SCHEDULE NO. 67

1. Name: **Ideal Cement**
2. Location: The Ideal Cement Substation, a.k.a. Garwood Ideal Substation, is located north of Garwood, Texas in Colorado County. (From Garwood, go north 4.1 miles on Highway 71, turn west, travel 1.7 miles, turn left and travel 2.1 miles.) The Point of Interconnection is located where the AEP jumper conductors from the Ideal Cement Substation equipment physically contact the connectors on the 69 kV transmission line.
3. Delivery Voltage: 69 kV
4. Normal Operation of Interconnection: Closed
5. One-Line Diagram Attached: Yes
6. Facility Ownership Responsibilities of the Parties:  
  
LCRA owns the following facilities:
  - the following transmission lines comprised of structures, easements, conductors, insulators, and connecting hardware:
    - Altair to Garwood Relief Pump 69 kV transmission line
  - insulators and hardware on the deadend structures that terminate the 69 kV line onto the station structure  
AEP owns the following facilities:
  - the Ideal Cement Substation including all facilities within it
  - any under-built distribution voltage circuits attached to the 69 kV transmission lines that terminate into the station
7. Facility Operation and Maintenance Responsibilities of the Parties:
  - LCRA controls and operates the following facilities:
    - 69 kV transmission line from the station to Altair
  - AEP controls and operates all other equipment in the station including the following:
    - 69 kV switch 1137
    - all distribution equipment in the station
  - Each Party maintains the facilities it owns that are provided for in this Facility Schedule. Maintenance of the facilities, including circuit breaker relays, that are owned by one Party that protect the facilities owned by the other Party, will be subject to review and approval by the other Party.

8. Cost Responsibilities of the Parties:

- Each Party will be fully responsible for the costs and liabilities related to the facilities it owns.
- Each Party will be responsible for all costs it incurs in connection with the establishment and maintenance of the Point of Interconnection in accordance with this Facility Schedule.

9. Other Terms and Conditions: None



### FACILITY SCHEDULE NO. 68

1. Name: **Garwood Relief**
2. Location: The Garwood Relief Substation is located north of Garwood, Texas in Colorado County. (From Garwood travel north 4.2 miles on Highway 71, turn west, travel 1.7 miles, turn right on gravel road and travel 1.3 miles.) The Point of Interconnection is located at the termination of the 69 kV line that is tapped off of the Altair Switching Station to Garwood Pump Station 69 kV transmission line where the jumper conductors from the station equipment physically contact the connectors on the 69 kV transmission line conductors.
3. Delivery Voltage: 69 kV
4. Normal Operation of Interconnection: Closed
5. One-Line Diagram Attached: Yes
6. Facility Ownership Responsibilities of the Parties:  
  
LCRA owns the following facilities:
  - the following transmission lines comprised of structures, easements, conductors, insulators, and connecting hardware:
    - Garwood Relief to Altair 69 kV transmission line
  - insulators and hardware on the deadend structures that terminate the 69 kV transmission tap line into the station  
AEP owns the following facilities:
  - the Garwood Relief Substation including all facilities within it
  - any under-built distribution voltage circuits attached to the 69 kV transmission lines that terminate into the station
7. Facility Operation and Maintenance Responsibilities of the Parties:
  - LCRA controls and operates the following facilities:
    - 69 kV transmission tap line from the station to Altair
  - AEP controls and operates all other equipment in the station including the following:
    - 69 kV switch 108
    - all distribution equipment in the station
  - Each Party maintains the facilities it owns that are provided for in this Facility Schedule. Maintenance of the facilities, including circuit breaker relays, that are

owned by one Party that protect the facilities owned by the other Party, will be subject to review and approval by the other Party.

8. Cost Responsibilities of the Parties:

- Each Party will be fully responsible for the costs and liabilities related to the facilities it owns.
- Each Party will be responsible for all costs it incurs in connection with the establishment and maintenance of the Point of Interconnection in accordance with this Facility Schedule.

9. Other Terms and Conditions: None

