

FACILITY SCHEDULE NO. 21

1. Name: **Childress 20th Street**
2. Facility Location: The Childress 20th Street Substation is located at 1911 Ave. H in the City of Childress, Childress County, Texas. The Point of Interconnection is located at the Substation dead-end structure where the jumpers from the Substation equipment connect to the terminating 69 kV transmission line from Brazos Electric Cooperative's Henry Substation.
3. Delivery Voltage: 69 kV
4. Normal Operation of Interconnection: Closed
5. One-Line Diagram Attached: Yes
6. Facility Ownership Responsibilities of the Parties:

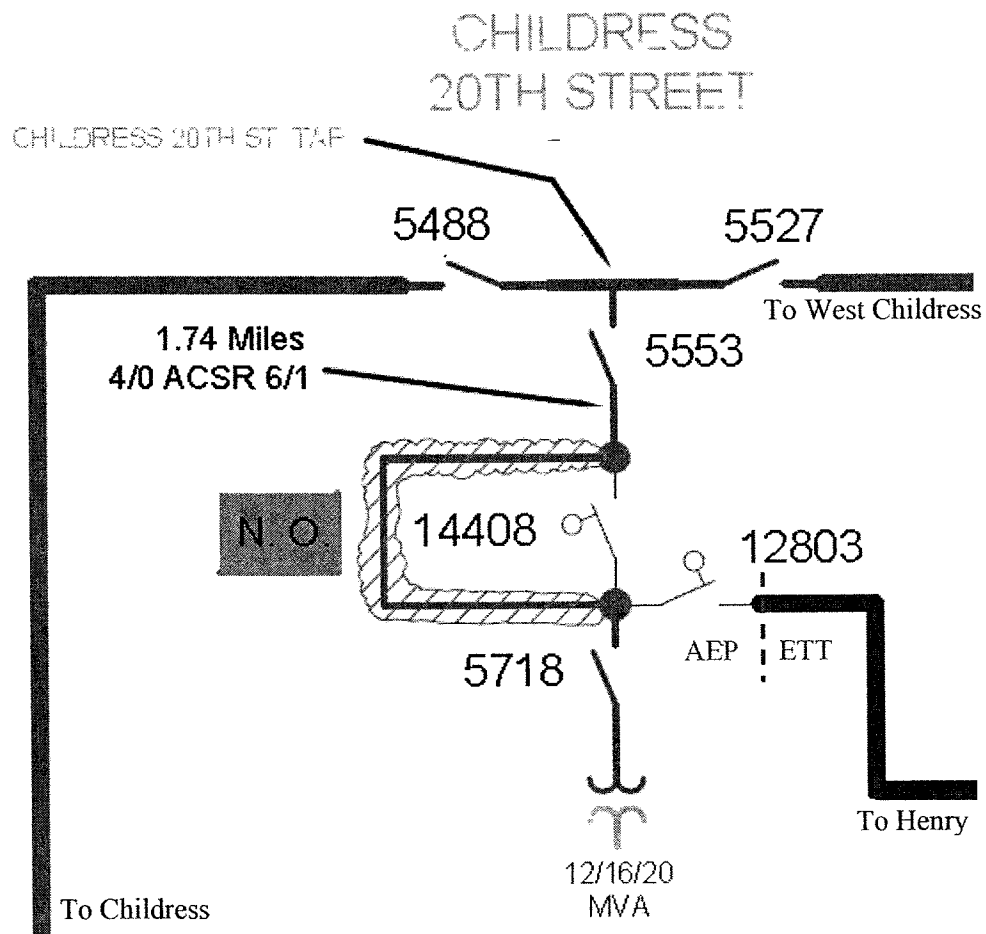
ETT owns the following facilities:
 - the 69kV line from Childress 20th Street Substations to the Henry Substation
AEP owns the following facilities:
 - all transmission and Distribution Facilities within the Childress 20th Street Substation.
 - all structures including the 1/1-tap structure on the Childress 20th Street to Childress 69 kV transmission line
 - two (2) 69 kV switches, #12803 and #14408 associated with the 1/1-tap structure
7. Operational Responsibilities of Each Party:
 - Each party controls and operates all the facilities it owns that are provided for in this Facility Schedule.
 - Per the December 21, 2007 Services Agreement between ETT and American Electric Power Service Corporation, AEP or its affiliates coordinate, direct, and perform all control center and field operation activities on the facilities owned by ETT. These activities shall include, but are not limited to, switching, clearances, and outages for planned maintenance and operations, emergency service restoration, and overall coordination of such activities with ERCOT.
8. Maintenance Responsibilities of Each Party:

- Each Party is responsible for maintenance of the facilities it owns that are provided for in this Facility Schedule.

9. Cost Responsibilities of the Parties: _

- Each Party will be fully responsible for the costs and liabilities related to the facilities it owns.

10. Other Terms and Conditions: None



FACILITY SCHEDULE NO. 22

1. Name: **Cisco**
2. Facility Location: The Cisco Substation is located at 200 East 5th St. in the City of Cisco, Eastland County, Texas. The Point of Interconnection is at the 69 kV bushings of the distribution transformer in the Cisco Substation.
3. Delivery Voltage: 69kV
4. Normal Operation of Interconnection: Closed
5. One-Line Diagram Attached: Yes
6. Facility Ownership Responsibilities of the Parties:

ETT owns the following facilities:

- all transmission facilities other than Telecommunication Facilities in the Cisco Substation between (i) the substation dead end structure to which is attached the Putnam to Leon 69kV transmission line and (ii) the 69kV bushings of the distribution transformer in the Cisco Substation (which bushings are owned by AEP)
- all protective, metering, or control facilities and equipment within the Cisco Substation not functioning exclusively as protective, metering, or control devices for, or in support of the operation or maintenance of Distribution Facilities
- the 69kV transmission line from the Cisco Substation to the Putnam Substation including the tap line into the Cisco Substation which is attached to switches 2006 and 2018 on the substation deadend structure

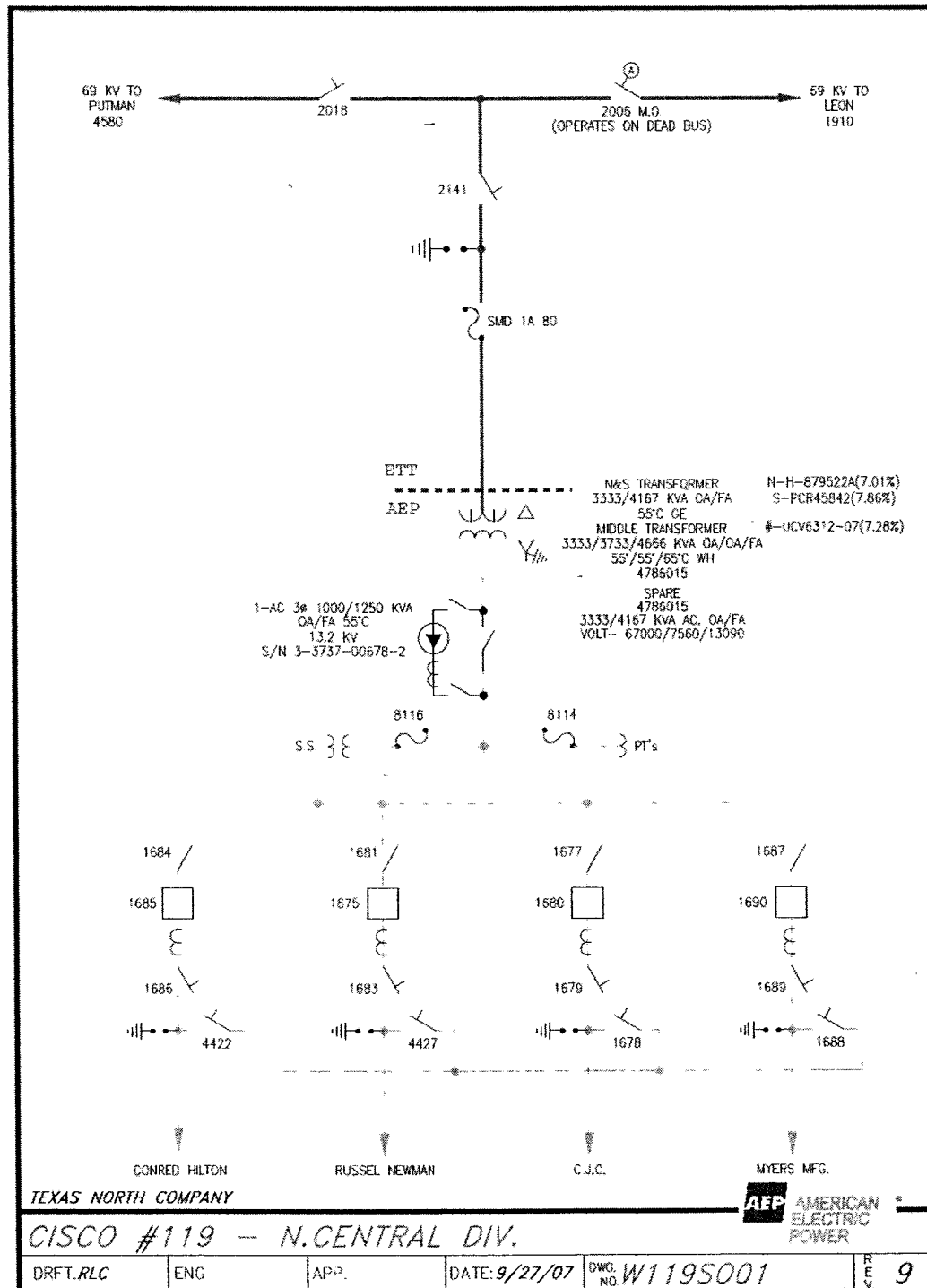
AEP owns the following facilities:

- all Distribution Facilities within the Cisco Substation including the distribution transformers and all facilities and equipment functioning exclusively as protective, metering, or control devices for, or in support of the operation or maintenance of Distribution Facilities
- the substation property, including perimeter fencing, as well as control house structure within the Cisco Substation

7. Operational Responsibilities of Each Party:
 - Each party controls and operates all the facilities it owns that are provided for in this Facility Schedule.
 - Per the December 21, 2007 Services Agreement between ETT and American Electric

Power Service Corporation, AEP or its affiliates coordinate, direct, and perform all control center and field operation activities on the facilities owned by ETT. These activities shall include, but are not limited to, switching, clearances, and outages for planned maintenance and operations, emergency service restoration, and overall coordination of such activities with ERCOT.

8. Maintenance Responsibilities of Each Party:
 - Each Party is responsible for maintenance of the facilities it owns that are provided for in this Facility Schedule.
9. Cost Responsibilities of the Parties:
 - Each Party will be fully responsible for the costs and liabilities related to the facilities it owns.
10. Other Terms and Conditions: None



FACILITY SCHEDULE NO. 23

1. Name: **Putnam**
2. Facility Location: The Putnam Substation is located at 900 County Rd. 317 in the City of Putnam, Callahan County, Texas. The Point of Interconnection is at the substation dead-end structure that terminates the 69 kV transmission line from the Leon Substation where the conductors from the substation equipment contact the conductors of the transmission line.
3. Delivery Voltage: 69 kV
4. Normal Operation of Interconnection: Closed
5. One-Line Diagram Attached: Yes
6. Facility Ownership Responsibilities of the Parties:

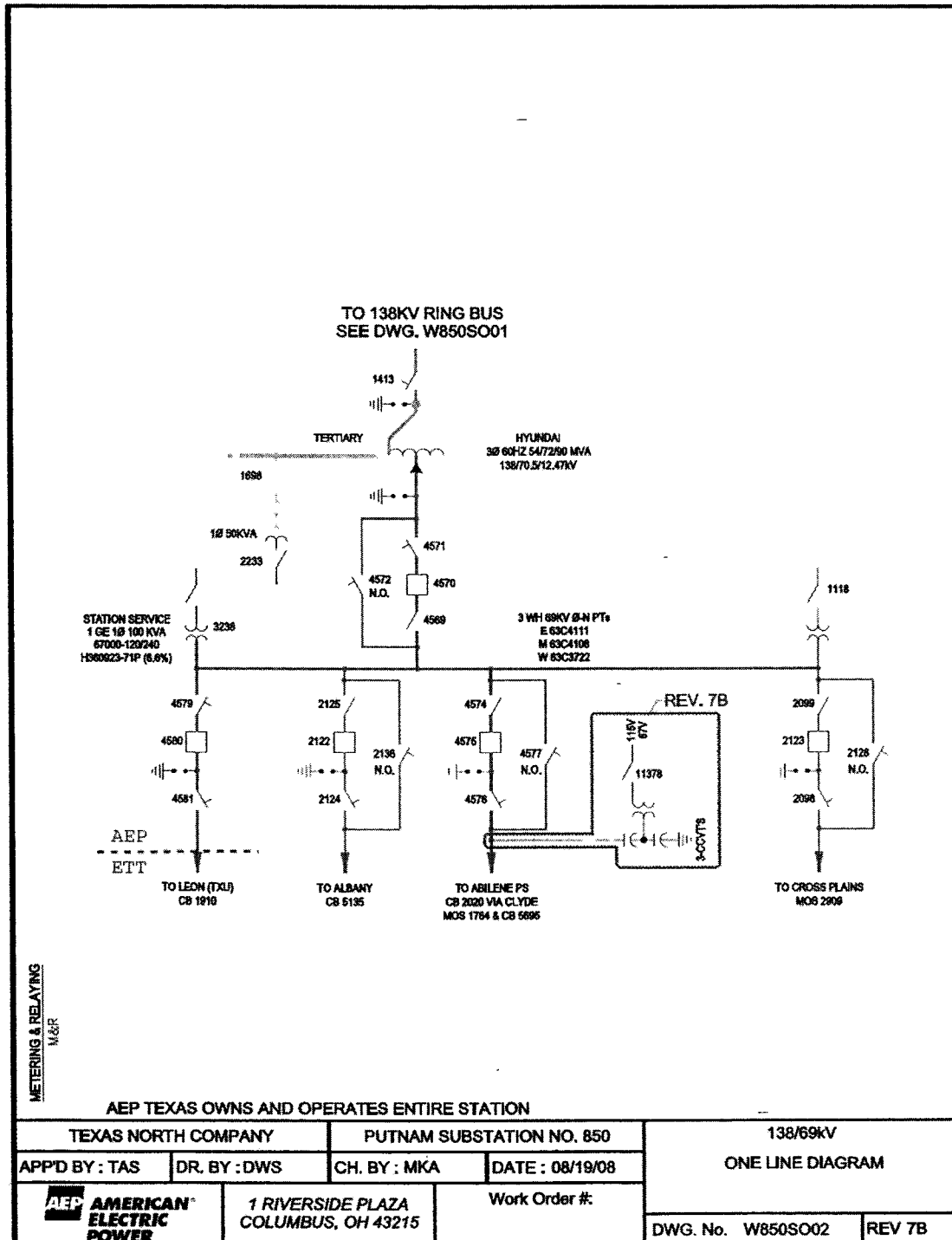
ETT owns the following facilities:

 - the 69 kV transmission line from the Putnam Substation to the Leon Substation to the point of interconnection with Oncor Energy Delivery

AEP owns the following facilities:

 - the Putnam Substation, including all of the facilities within it
 - the 69kV transmission line from the Putnam Substation to the Abilene Power Station
 - the 69kV transmission line from the Putnam Substation to the Albany Substation
 - the 69kV transmission line from the Putnam Substation to the Cross Plains Substation
 - the 138kV transmission line from the Putnam Substation to the Leon Substation
 - the 138kV transmission line from the Putnam Substation to the South Abilene Substation
7. Operational Responsibilities of Each Party:
 - Each party controls and operates all the facilities it owns that are provided for in this Facility Schedule.
 - Per the December 21, 2007 Services Agreement between ETT and American Electric Power Service Corporation, AEP or its affiliates coordinate, direct, and perform all control center and field operation activities on the facilities owned by ETT. These activities shall include, but are not limited to, switching, clearances, and outages for planned maintenance and operations, emergency service restoration, and overall coordination of such activities with ERCOT.

8. Maintenance Responsibilities of Each Party:
 - Each Party is responsible for maintenance of the facilities it owns that are provided for in this Facility Schedule.
9. Cost Responsibilities of the Parties:
 - Each Party will be fully responsible for the costs and liabilities related to the facilities it owns.
10. Other Terms and Conditions: None



FACILITY SCHEDULE NO. 24

1. Name: **Illinois #4** _
2. Facility Location: The Illinois #4 Substation is located at 685 County Rd. 414 approximately 40 miles southwest of the City of Ozona, Crockett County, Texas. The Point of Interconnection is at the substation dead-end structure that terminates the 69 kV transmission line from the Ozona Substation where the jumper conductors from the substation equipment physically contact the connectors on the transmission line conductors.
3. Delivery Voltage: 69 kV
4. Normal Operation of Interconnection: Closed
5. One-Line Diagram Attached: Yes
6. Facility Ownership Responsibilities of the Parties:

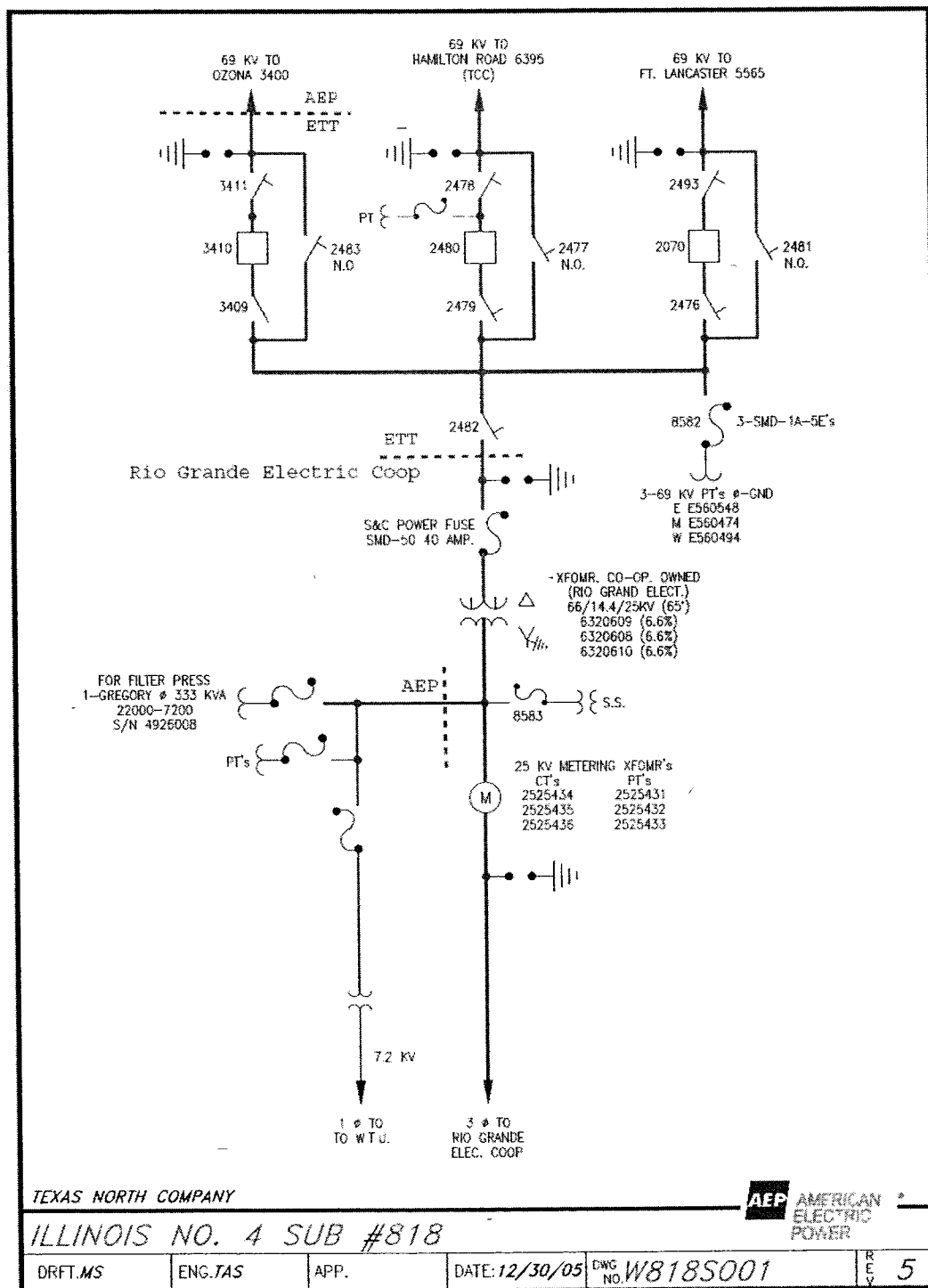
ETT owns the following facilities unless expressly described as footprint facilities below:

- all transmission facilities other than Telecommunication Facilities in the Illinois #4 Substation, including the substation dead end structures between (i) the substation dead-end structures to which are attached the 69kV transmission line to the Fort Lancaster Substation, the 69kV transmission line to the Hamilton Road Substation (via Comstock Substation and Rough Canyon Substation) and the 69kV transmission line to the Ozona Substation and (ii) the load side of switch 2482 that connects to the Rio Grande Electric Cooperative, Inc. (RGEC) distribution transformer in the Illinois #4 Substation
- all protective, metering, or control facilities and equipment within the Illinois #4 Substation not functioning exclusively as protective, metering, or control devices for, or in support of the operation or maintenance of Distribution Facilities
- the 69kV transmission line to the Fort Lancaster Substation
- approximately 22.9 miles of the 69kV transmission line to the Hamilton Road Substation to a point in the line where it interconnects with AEP Texas Central Company

AEP owns the following facilities:

- the 69kV transmission line to the Ozona Substation
- the substation property, including perimeter fencing, as well as control house structure within the Illinois #4 Substation
- Distribution Facilities not owned by Rio Grande Electric Cooperative

- the following footprint facilities within the ground grid boundary of the Illinois #4 Substation:
 - station service transformer if energized by Distribution Facilities
 - instrument transformers if energized by Distribution Facilities
 - ground grid
 - foundations
 - cable tray, trench or raceway or conduit bank
 - lighting
 - lightning rods and statics
 - spill prevention and retention facilities
- 7. Operational Responsibilities of Each Party:
 - Each party controls and operates all the facilities it owns that are provided for in this Facility Schedule.
 - Per the December 21, 2007 Services Agreement between ETT and American Electric Power Service Corporation, AEP or its affiliates coordinate, direct, and perform all control center and field operation activities on the facilities owned by ETT. These activities shall include, but are not limited to, switching, clearances, and outages for planned maintenance and operations, emergency service restoration, and overall coordination of such activities with ERCOT.
- 8. Maintenance Responsibilities of Each Party:
 - Each Party is responsible for maintenance of the facilities it owns that are provided for in this Facility Schedule.
- 9. Cost Responsibilities of the Parties:
 - Each Party will be fully responsible for the costs and liabilities related to the facilities it owns.
- 10. Other Terms and Conditions: None



FACILITY SCHEDULE NO. 25

1. Name: **Fort Lancaster**
2. Facility Location: The Fort Lancaster Substation is located at 10069 East Hwy 290 approximately 5 miles east of the City of Sheffield, Crockett County, Texas. The Point of Interconnection is at the substation dead end structure where the conductors from the Fort Lancaster Substation equipment connect to the conductors of the 69 kV transmission line from the Illinois #4 Substation.
3. Delivery Voltage: 69 kV
4. Normal Operation of Interconnection: Closed
5. One-Line Diagram Attached: Yes
6. Facility Ownership Responsibilities of the Parties:

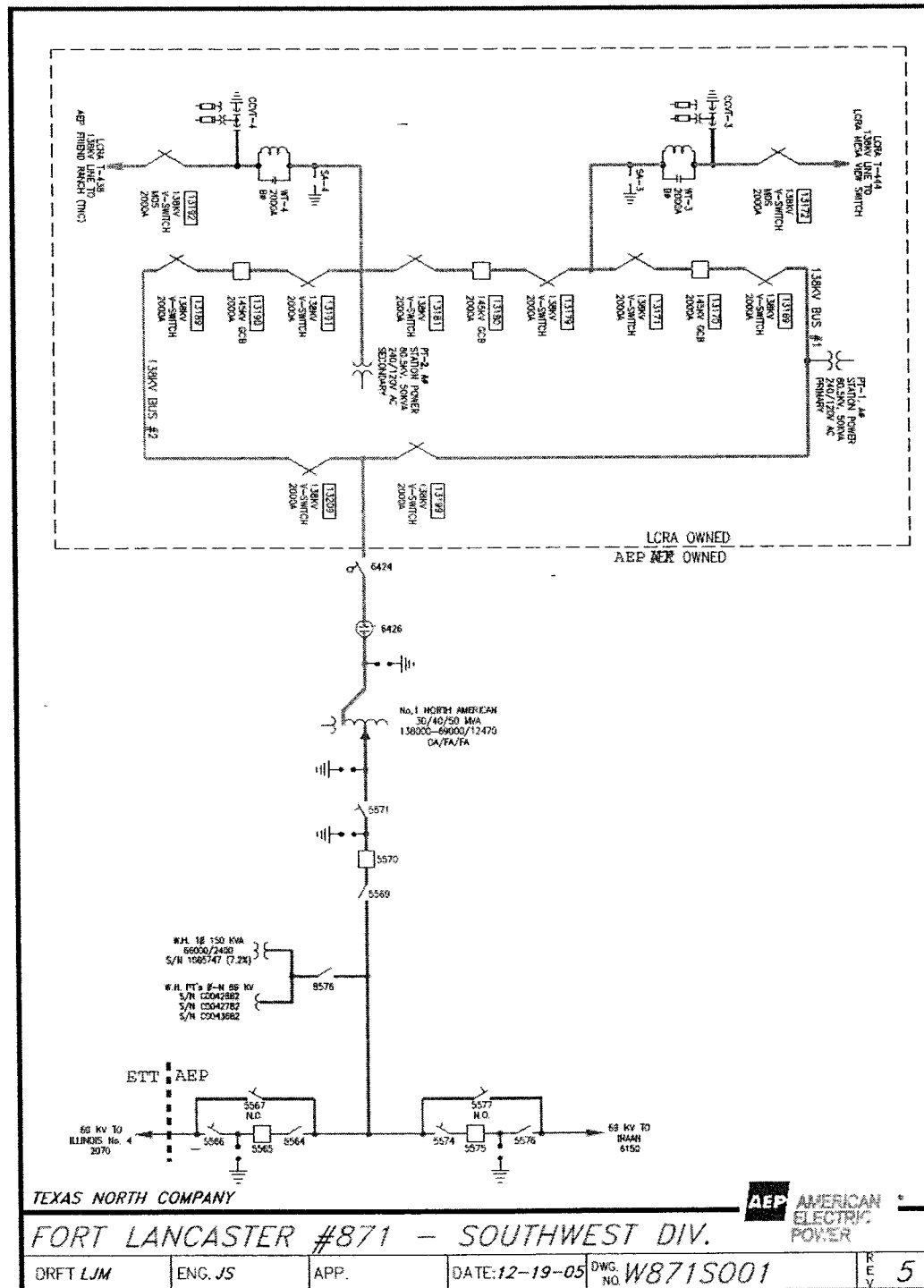
ETT owns the following facilities:
 - the 69 kV transmission line to the Illinois #4 Substation
AEP owns the following facilities:
 - the 69 kV Fort Lancaster Substation including all the facilities within it expect for those owned by LCRA
 - the 138/69 kV autotransformer and associated equipment
 - the 69 kV transmission line from the Fort Lancaster Substation to the West Yates Substation
7. Operational Responsibilities of Each Party:
 - Each party controls and operates all the facilities it owns that are provided for in this Facility Schedule.
 - Per the December 21, 2007 Services Agreement between ETT and American Electric Power Service Corporation, AEP or its affiliates coordinate, direct, and perform all control center and field operation activities on the facilities owned by ETT. These activities shall include, but are not limited to, switching, clearances, and outages for planned maintenance and operations, emergency service restoration, and overall coordination of such activities with ERCOT.
8. Maintenance Responsibilities of Each Party:

- Each Party is responsible for maintenance of the facilities it owns that are provided for in this Facility Schedule.

9. Cost Responsibilities of the Parties:

- Each Party will be fully responsible for the costs and liabilities related to the facilities it owns.

10. Other Terms and Conditions: None



FACILITY SCHEDULE NO. 26

1. Name: **Muleta**
2. Facility Location: The Muleta Substation is located approximately 5.3 miles northwest of the City of Matador on the east side of State Road 70 in Motley County, Texas. The two (2) Points of Interconnection at this location are where the conductors from the two sectionalizing line switches connect to the conductors of the Matador to Estelline 69 kV transmission line.
3. Delivery Voltage: 69 kV
4. Normal Operation of Interconnection: Closed
5. One-Line Diagram Attached: Yes
6. Facility Ownership Responsibilities of the Parties:

ETT owns the following facilities:
 - two (2) 69 kV sectionalizing line switches (#2948 and #11783)
 - 69kV transmission line from these switches to the point of interconnection with Lighthouse Electric Cooperative
AEP owns the following facilities:
 - the Matador to Estelline 69 kV transmission line, excluding the facilities owned by ETT as described above
7. Operational Responsibilities of Each Party:
 - Each party controls and operates all the facilities it owns that are provided for in this Facility Schedule.
 - Per the December 21, 2007 Services Agreement between ETT and American Electric Power Service Corporation, AEP or its affiliates coordinate, direct, and perform all control center and field operation activities on the facilities owned by ETT. These activities shall include, but are not limited to, switching, clearances, and outages for planned maintenance and operations, emergency service restoration, and overall coordination of such activities with ERCOT.
8. Maintenance Responsibilities of Each Party:
 - Each Party is responsible for maintenance of the facilities it owns that are provided for in this Facility Schedule.

9. Cost Responsibilities of the Parties:

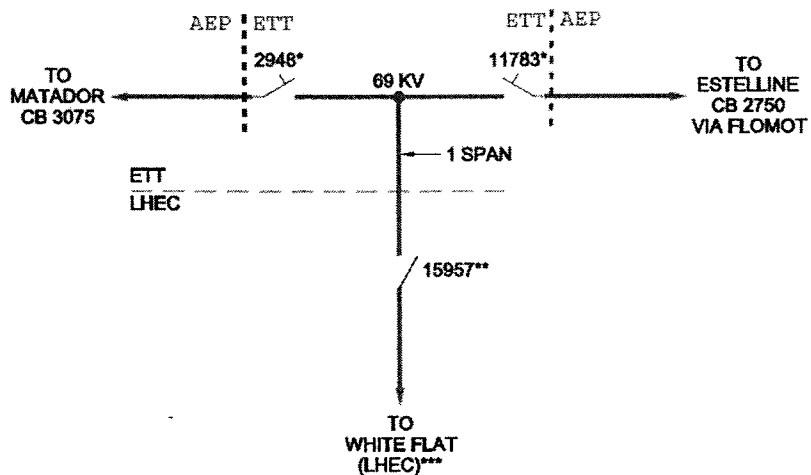
- Each Party will be fully responsible for the costs and liabilities related to the facilities it owns.

10. Other Terms and Conditions: None

Operating Companies of the
339
American Electric Power System
FERC Electric Tariff, Third Revised Volume No. 6

First Revised Service Agreement No.

Original Sheet No 112





NOTE:

* 69 KV, 2000A CONTINUOUS,
GROUP OPERATED, MANUAL,
PHASE OVER PHASE MOUNTING

** SWITCH OWNED AND OPERATED BY LHEC.
SWITCH NUMBER ISSUED BY AEP-TEXAS.

*** METERING TO BE AT WHITE FLAT (LHEC)

ENTIRE STATION OWNED AND OPERATED BY ELECTRIC TRANSMISSION TEXAS EXCEPT AS NOTED

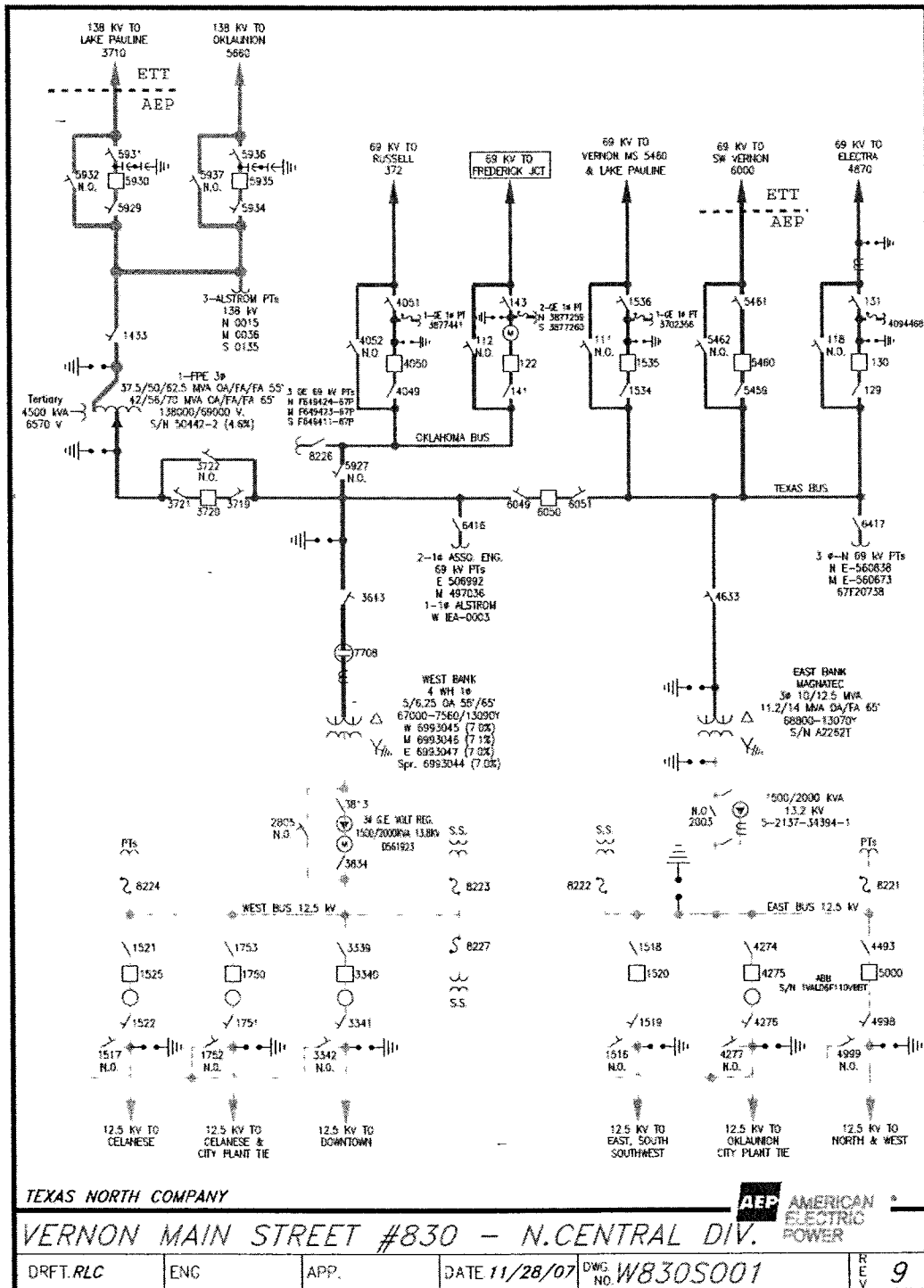
ELECTRIC TRANSMISSION TEXAS		MULETA #450		69KV DISPATCH ONE LINE	
APP'D BY : DLG	DR. BY : RLC	CH. BY : CJC	DATE : 2/9/10		
		 <small>ENGINEERED BY: AMERICAN ELECTRIC POWER SERVICE CORPORATION REGISTRATION # F-3881</small>		Work Order #:	DWG. No. W450SO01
				41309423	
					REV 0

FACILITY SCHEDULE NO. 27

1. Name: **Vernon Main**
2. Facility Location: The Vernon Main Substation is located at 600 Main St. in the City of Vernon, Wilbarger County, Texas. The two Points of Interconnection are at the dead-end structure that terminates the 69 kV transmission line from the SW Vernon Substation and the dead-end structure that terminates the 138 kV transmission line from the Lake Pauline Substation where the jumper conductors from the substation equipment physically contact the connectors on the transmission lines' conductors.
3. Delivery Voltage: 69 kV & 138 kV
4. Normal Operation of Interconnection: Closed
5. One-Line Diagram Attached: Yes
6. Facility Ownership Responsibilities of the Parties:

ETT owns the following facilities:
 - the portion of the Vernon Main – Lake Pauline 138 kV transmission line from and including structure 24/4 to the Vernon Main Substation
 - the 69 kV transmission line from the Vernon Main Substation to the SW Vernon Substation
AEP owns the following facilities:
 - the Vernon Main Substation including all of the facilities within it
7. Operational Responsibilities of Each Party:
 - Each party controls and operates all the facilities it owns that are provided for in this Facility Schedule.
 - Per the December 21, 2007 Services Agreement between ETT and American Electric Power Service Corporation, AEP or its affiliates coordinate, direct, and perform all control center and field operation activities on the facilities owned by ETT. These activities shall include, but are not limited to, switching, clearances, and outages for planned maintenance and operations, emergency service restoration, and overall coordination of such activities with ERCOT.
8. Maintenance Responsibilities of Each Party:

- Each Party is responsible for maintenance of the facilities it owns that are provided for in this Facility Schedule.
9. Cost Responsibilities of the Parties:
- Each Party will be fully responsible for the costs and liabilities related to the facilities it owns.
10. Other Terms and Conditions: None



FACILITY SCHEDULE NO. 28

1. Name: **Vernon Main-Lake Pauline Tie Line**
2. Facility Location: The Point of Interconnection is located at structure 24/4 in the Vernon Main-Lake Pauline 138 kV transmission line approximately one mile from the Vernon Main Substation.
3. Delivery Voltage: 138 kV
4. Normal Operation of Interconnection: Closed
5. One-Line Diagram Attached: Yes
6. Facility Ownership Responsibilities of the Parties:

ETT owns the following facilities:
 - the portion of the Vernon Main – Lake Pauline 138 kV transmission line from and including structure 24/4 to the Vernon Main Substation
AEP owns the following facilities:
 - the portion of the Vernon Main – Lake Pauline 138 kV transmission line from, but excluding, structure 24/4 to the Lake Pauline Substation
7. Operational Responsibilities of Each Party:
 - Each party controls and operates all the facilities it owns that are provided for in this Facility Schedule.
 - Per the December 21, 2007 Services Agreement between ETT and American Electric Power Service Corporation, AEP or its affiliates coordinate, direct, and perform all control center and field operation activities on the facilities owned by ETT. These activities shall include, but are not limited to, switching, clearances, and outages for planned maintenance and operations, emergency service restoration, and overall coordination of such activities with ERCOT.
8. Maintenance Responsibilities of Each Party:
 - Each Party is responsible for maintenance of the facilities it owns that are provided for in this Facility Schedule.
9. Cost Responsibilities of the Parties:

- Each Party will be fully responsible for the costs and liabilities related to the facilities it owns.

_ 10. Other Terms and Conditions: None



FACILITY SCHEDULE NO. 29

1. Name: **Vernon Main-Vernon North Tie Line**
2. Facility Location: The Point of Interconnection is located at structure 48 in the Vernon Main-Vernon North 69 kV transmission line approximately one mile from the Vernon Main Substation.
3. Delivery Voltage: 69 kV
4. Normal Operation of Interconnection: Closed
5. One-Line Diagram Attached: Yes
6. Facility Ownership Responsibilities of the Parties:

ETT owns the following facilities:

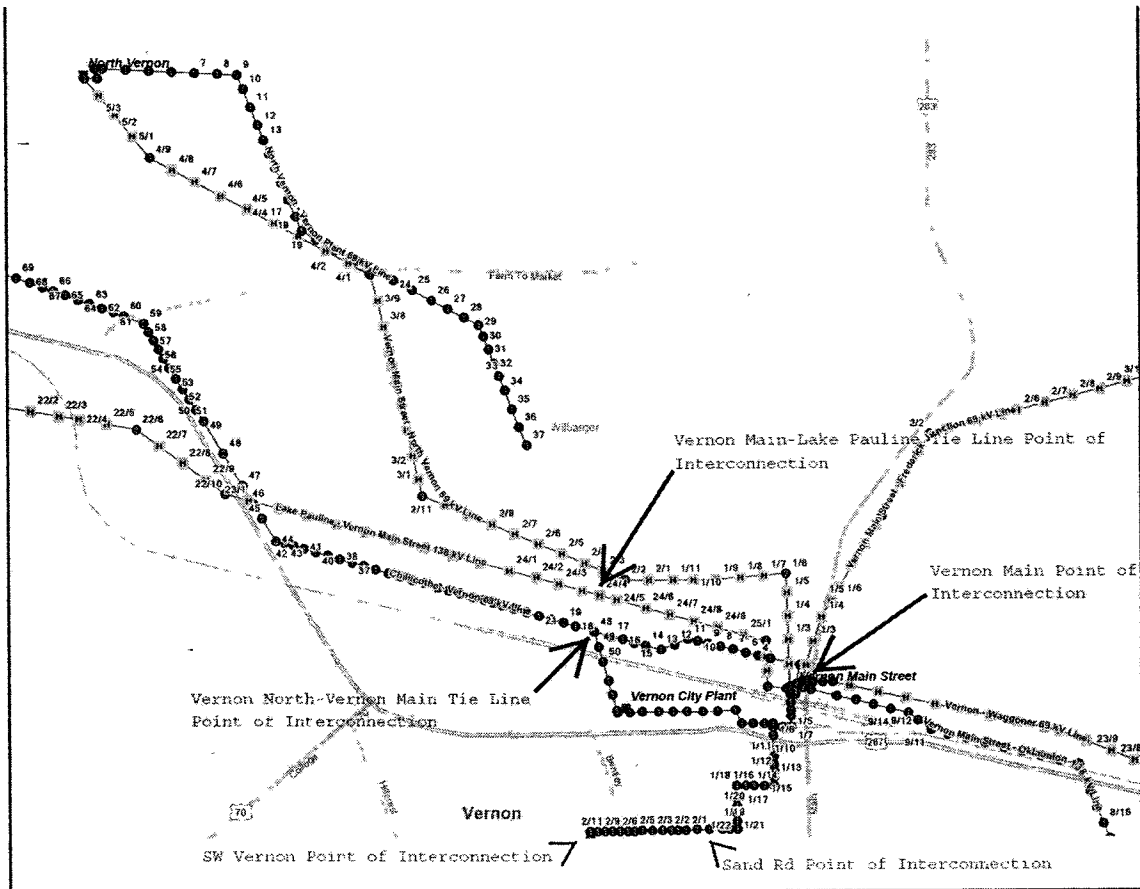
 - the portion of the Vernon Main – Vernon North 69 kV transmission line from and including structure 48 to the Vernon Main Substation

AEP owns the following facilities:

 - the portion of the Vernon Main – Vernon North 69 kV transmission line from, but excluding, structure 48 to the Vernon North Substation
7. Operational Responsibilities of Each Party:
 - Each party controls and operates all the facilities it owns that are provided for in this Facility Schedule.
 - Per the December 21, 2007 Services Agreement between ETT and American Electric Power Service Corporation, AEP or its affiliates coordinate, direct, and perform all control center and field operation activities on the facilities owned by ETT. These activities shall include, but are not limited to, switching, clearances, and outages for planned maintenance and operations, emergency service restoration, and overall coordination of such activities with ERCOT.
8. Maintenance Responsibilities of Each Party:
 - Each Party is responsible for maintenance of the facilities it owns that are provided for in this Facility Schedule.
9. Cost Responsibilities of the Parties:

- Each Party will be fully responsible for the costs and liabilities related to the facilities it owns.

10. Other Terms and Conditions: None



FACILITY SCHEDULE NO. 30

1. Name: **Sand Road**
2. Facility Location: The Sand Road Substation is located at 2700 Sand Road in the City of Vernon, Wilbarger County, Texas. The Point of Interconnection is at the 69 kV bushings of the distribution transformer in the Sand Road Substation.
3. Delivery Voltage: 69 kV
4. Normal Operation of Interconnection: Closed
5. One-Line Diagram Attached: Yes
6. Facility Ownership Responsibilities of the Parties:

ETT owns the following facilities unless expressly described as footprint facilities below:

- all transmission facilities other than Telecommunication Facilities, including the transmission box structure, within the Sand Road Substation between i) the transmission box structure to which is attached the 69kV transmission line to the Southwest Vernon Substation and the 69kV transmission line to the Vernon Main Substation and ii) the 69 kV bushings of the distribution transformers in the Sand Road Substation (which bushings are owned by AEP)
- all protective, metering, or control facilities and equipment within the Sand Road Substation not functioning exclusively as protective, metering, or control devices for, or in support of the operation or maintenance of Distribution Facilities
- the 69kV transmission line from the Sand Road Substation to the Vernon Main Substation
- the 69kV transmission line from the Sand Road Substation to the Southwest Vernon Substation

AEP owns the following facilities:

- all Distribution Facilities within the Sand Road Substation including the distribution transformer and all facilities and equipment functioning exclusively as protective, metering, or control devices for, or in support of the operation or maintenance of Distribution Facilities
- the substation property, including perimeter fencing, as well as control house structure within the Sand Road Substation
- one (1) station RTU within the control house

- the following footprint facilities within the ground grid boundary of the Sand Road Substation:
 - station service transformer if energized by Distribution Facilities
 - instrument transformers if energized by Distribution Facilities
 - ground grid
 - foundations
 - cable tray, trench or raceway or conduit bank
 - lighting
 - lightning rods and statics
 - spill prevention and retention facilities
7. Operational Responsibilities of Each Party:
- Each party controls and operates all the facilities it owns that are provided for in this Facility Schedule.
 - Per the December 21, 2007 Services Agreement between ETT and American Electric Power Service Corporation, AEP or its affiliates coordinate, direct, and perform all control center and field operation activities on the facilities owned by ETT. These activities shall include, but are not limited to, switching, clearances, and outages for planned maintenance and operations, emergency service restoration, and overall coordination of such activities with ERCOT.
8. Maintenance Responsibilities of Each Party:
- Each Party is responsible for maintenance of the facilities it owns that are provided for in this Facility Schedule.
9. Cost Responsibilities of the Parties:
- Each Party will be fully responsible for the costs and liabilities related to the facilities it owns.
10. Other Terms and Conditions: None



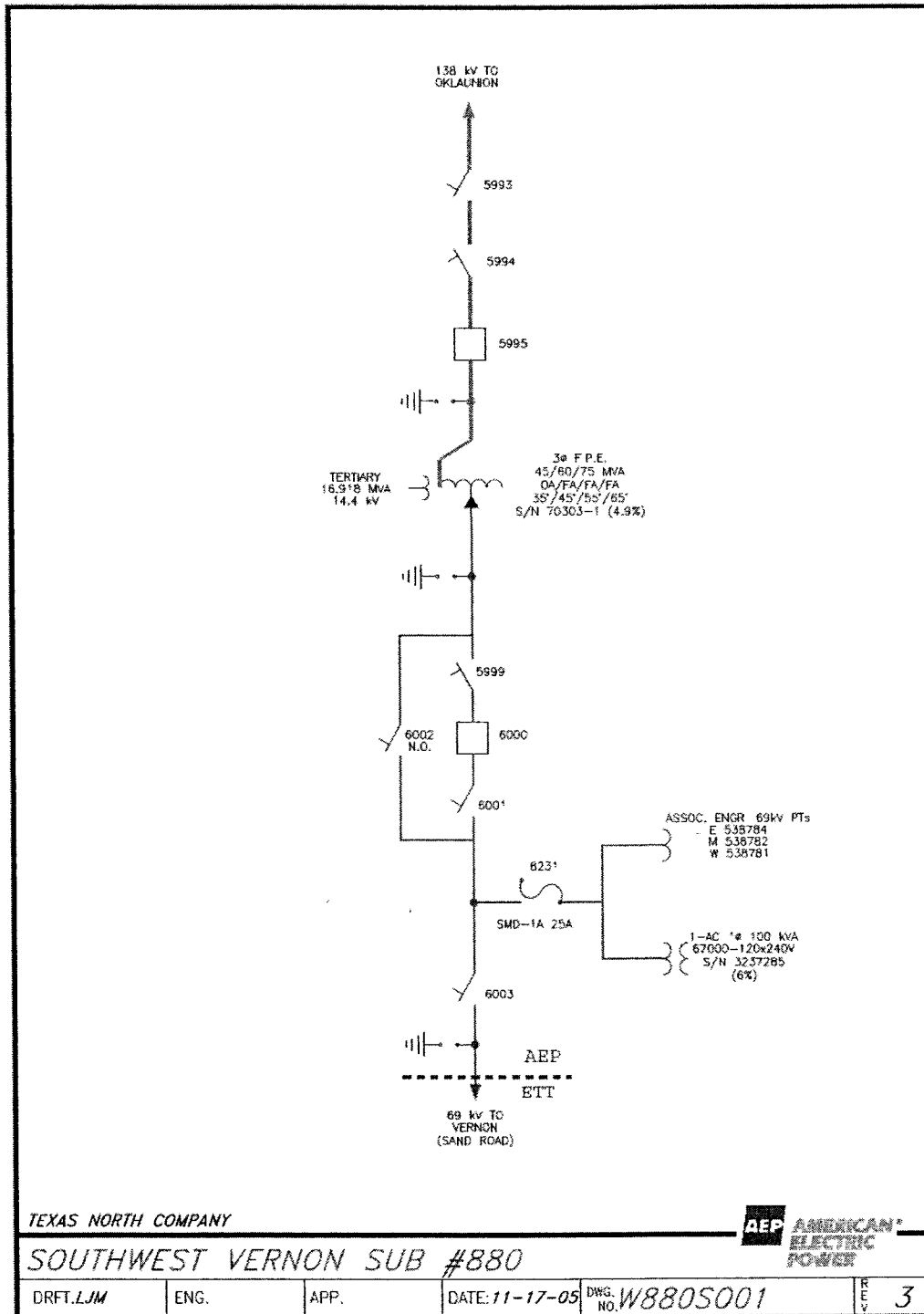
FACILITY SCHEDULE NO. 31

1. Name: **Southwest Vernon**
2. Facility Location: The Southwest Vernon Substation is located at 10025 CR 99 South in the City of Vernon, Wilbarger County, Texas. The Point of Interconnection is at the dead-end structure that terminates the 69 kV transmission line from the Vernon Main Substation where the jumper conductors from the substation equipment physically contact the connectors on the transmission line conductors.
3. Delivery Voltage: 69 kV
4. Normal Operation of Interconnection: Closed
5. One-Line Diagram Attached: Yes
6. Facility Ownership Responsibilities of the Parties:

ETT owns the following facilities:
 - the 69 kV transmission line from the Southwest Vernon Substation to the Vernon Main Substation
AEP owns the following facilities:
 - the Southwest Vernon Substation and all of the facilities within it
7. Operational Responsibilities of Each Party:
 - Each party controls and operates all the facilities it owns that are provided for in this Facility Schedule.
 - Per the December 21, 2007 Services Agreement between ETT and American Electric Power Service Corporation, AEP or its affiliates coordinate, direct, and perform all control center and field operation activities on the facilities owned by ETT. These activities shall include, but are not limited to, switching, clearances, and outages for planned maintenance and operations, emergency service restoration, and overall coordination of such activities with ERCOT.
8. Maintenance Responsibilities of Each Party:
 - Each Party is responsible for maintenance of the facilities it owns that are provided for in this Facility Schedule.
9. Cost Responsibilities of the Parties:

- Each Party will be fully responsible for the costs and liabilities related to the facilities it owns.

10. Other Terms and Conditions: None



FACILITY SCHEDULE NO. 32

1. Name: **Oklaunion**
2. Facility Location: The Oklaunion Substation is located at 12567 FM Rd. 3430, approximately 5 miles southeast of the City of Vernon, Wilbarger County, Texas. There are three (3) 138 kV and three (3) 345 kV Points of Interconnection at the south yard of this substation. The Points of Interconnection are located at i) the substation dead end structures where the conductors from the substation equipment connect to the conductors of the 138 kV transmission lines from the Southwest Vernon Substation and Vernon Main Street Substation, ii) the point where the 138 kV conductors from switch #1397 connect to circuit switcher #5607, iii) the substation dead end structures where the conductors from the substation equipment connect to the conductors of the 345 kV transmission lines from the Mulberry Red Creek Substation and Fisher Road Substation and iv) the 345 kV switch #5598 where the conductors from the substation connect to the south yard of the HVDC converter station.
3. Delivery Voltage: 138 kV & 345 kV
4. Normal Operation of Interconnection: Closed
5. One-Line Diagram Attached: Yes
6. Facility Ownership Responsibilities of the Parties:

ETT owns the following facilities:

- all transmission facilities the south yard of the Oklaunion Substation other than Telecommunication Facilities and dead-end structures between (i) the substation dead-end structures to which are attached the 138kV transmission lines to the Southwest Vernon Substation and Vernon Main Substation, 138kV tie line to the Oklaunion Power Plant reserve auxiliary transformers, the 345kV transmission line to the Fisher Road Substation, the 345kV tie line to the Oklaunion Power Plant, the 345kV transmission line to the Mulberry Red Creek Substation, and the 345kV transmission line to the south yard of the HVDC converter station and (ii) the transmission side bushings of circuit switcher #5607 excluding the bushings
- all protective, metering, or control facilities and equipment in the south yard of the Oklaunion Substation not functioning exclusively as protective, metering, or control devices for, or in support of the operation or maintenance of Distribution Facilities
- two (2) RTUs for ERCOT settlement metering and station control

AEP owns the following facilities:

- all Distribution Facilities within the south yard of the Oklaunion Substation including the distribution transformer and all facilities and equipment functioning exclusively as protective, metering, or control devices for, or in support of the operation or maintenance of Distribution Facilities
 - the substation property, including perimeter fencing, as well as control house structure within the Oklaunion Substation
 - the 138 kV facilities between circuit switcher #5607 and the Distribution Facilities, including circuit switcher #5607
 - the 345 kV facilities of the south yard of the HVDC converter station, including switch #5598
 - one (1) wireless remote communication device
7. Operational Responsibilities of Each Party:
- Each party controls and operates all the facilities it owns that are provided for in this Facility Schedule.
 - Per the December 21, 2007 Services Agreement between ETT and American Electric Power Service Corporation, AEP or its affiliates coordinate, direct, and perform all control center and field operation activities on the facilities owned by ETT. These activities shall include, but are not limited to, switching, clearances, and outages for planned maintenance and operations, emergency service restoration, and overall coordination of such activities with ERCOT.
8. Maintenance Responsibilities of Each Party:
- Each Party is responsible for maintenance of the facilities it owns that are provided for in this Facility Schedule.
9. Cost Responsibilities of the Parties:
- Each Party will be fully responsible for the costs and liabilities related to the facilities it owns.
10. Other Terms and Conditions: None

