

- the following facilities within the ground grid boundary of the Port Aransas Substation:
 - station service transformer if energized by distribution facilities
 - instrument transformers if energized by distribution facilities
 - ground grid
 - foundations
 - cable tray, trench or raceway or conduit bank
 - lighting
 - lightning rods and statics
 - spill prevention and retention facilities

7. Operational Responsibilities of Each Party:

Each party controls and operates all the facilities it owns that are provided for in this Facility Schedule.

Per the December 21, 2007 Services Agreement between ETT and American Electric Power Service Corporation, AEP or its affiliates coordinate, direct, and perform all control center and field operation activities on the switchyard facilities owned by ETT. These activities shall include, but are not limited to, switching, clearances, and outages for planned maintenance and operations, emergency service restoration, and overall coordination of such activities with ERCOT.

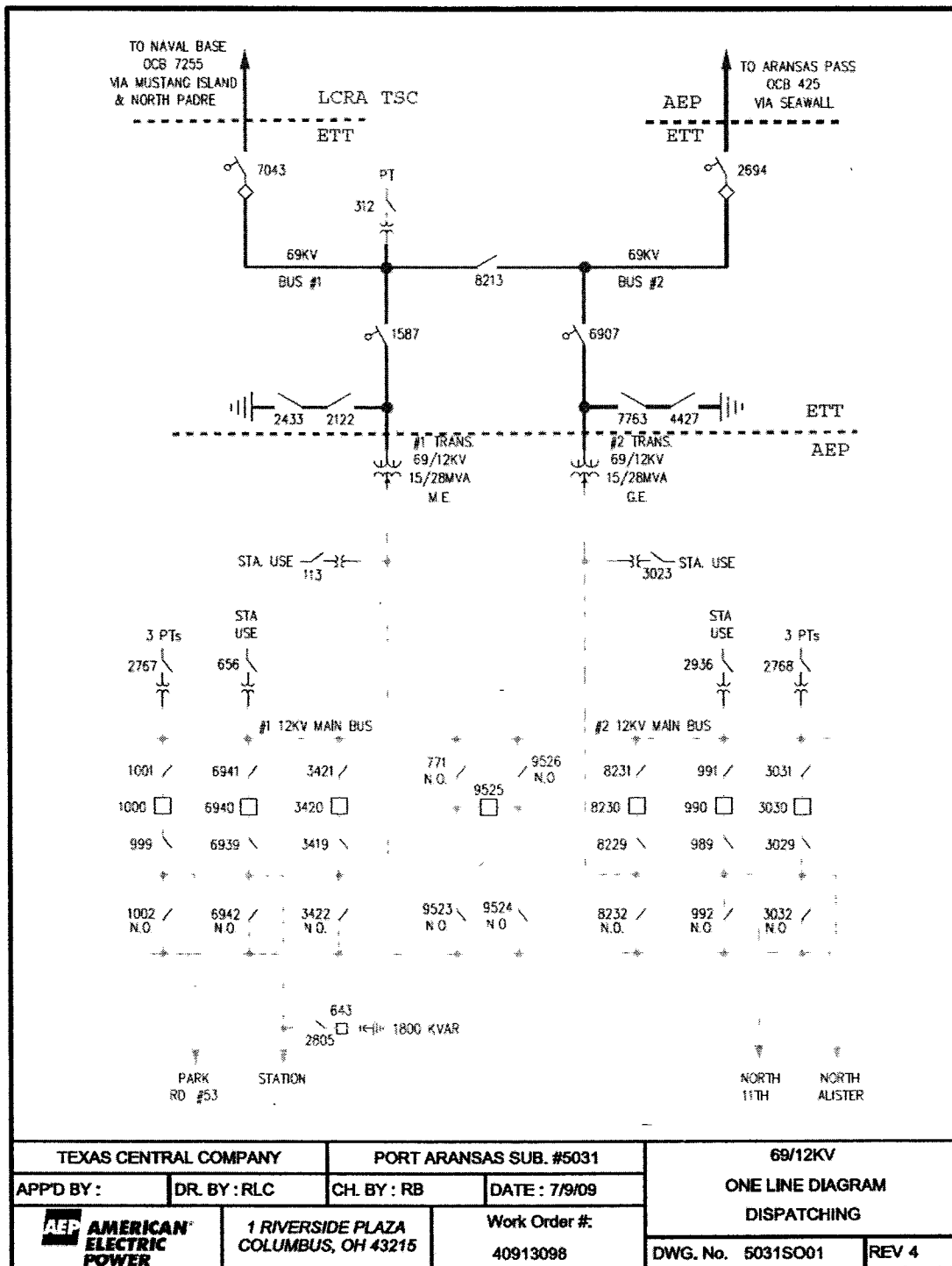
8. Maintenance Responsibilities of Each Party:

Each Party is responsible for maintenance of the facilities it owns that are provided for in this Facility Schedule.

9. Cost Responsibilities of the Parties:

Each Party will be fully responsible for the costs and liabilities related to the facilities it owns.

10. Other Terms and Conditions: None



FACILITY SCHEDULE NO. 23

1. Name: **West Batesville**
2. Facility Location: The West Batesville Substation is located at 756 E Hwy 57 approximately 10 miles east of City of La Pryor, Zavala County, Texas. There are three (3) Points of Interconnection at this location. They are at the substation dead-end structures that terminate the 138 kV transmission lines from the Batesville, Asherton and Uvalde substations where the jumper conductors from the substation equipment physically contact the connectors on the 138 kV transmission line conductors.
3. Delivery Voltage: 138 kV
4. Normal Operation of Interconnection: Closed
5. One-Line Diagram Attached: Yes
6. Facility Ownership Responsibilities of the Parties:

ETT owns the following facilities:

 - all transmission facilities, including the substation dead-end structures, within the West Batesville Substation between i) the substation dead-end structures to which is attached the 138kV transmission line to the South Texas Electric Cooperative Batesville Substation, ii) the substation dead-end structure to which is attached the 138kV transmission line to the Asherton Substation, and (iii) the substation dead-end structure to which is attached the 138kV transmission line to the Uvalde Substation
 - the substation property, including perimeter fencing, as well as the control house structure within the West Batesville Substation
 - one (1) station RTU

AEP owns the following facilities:

 - the 138kV transmission line from the West Batesville Substation to the South Texas Electric Cooperative Batesville Substation
 - the 138kV transmission line from the West Batesville Substation to the Asherton Substation
 - the 138kV transmission line from the West Batesville Substation to the Uvalde Substation
7. Operational Responsibilities of Each Party:

Each party controls and operates all the facilities it owns that are provided for in this Facility Schedule.

Per the December 21, 2007 Services Agreement between ETT and American Electric Power Service Corporation, AEP or its affiliates coordinate, direct, and perform all control center and field operation activities on the switchyard facilities owned by ETT. These activities shall include, but are not limited to, switching, clearances, and outages for planned maintenance and operations, emergency service restoration, and overall coordination of such activities with ERCOT.

8. Maintenance Responsibilities of Each Party:

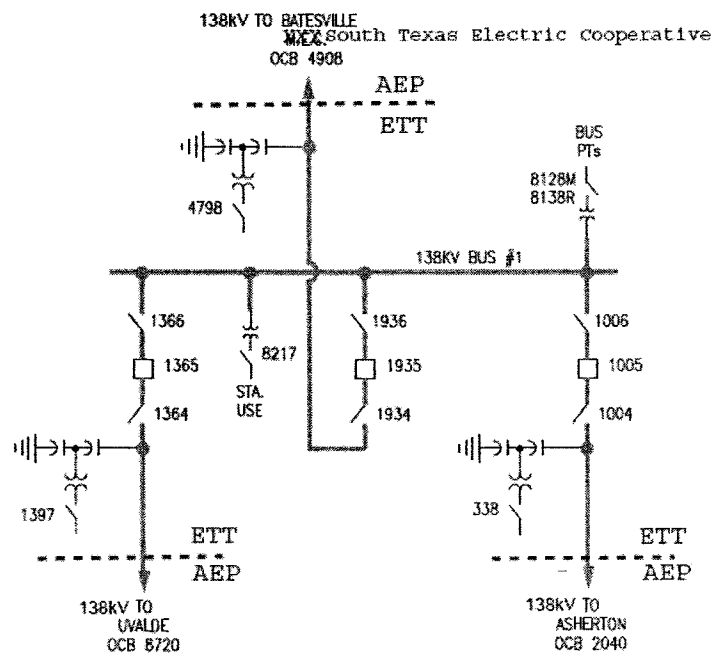
Each Party is responsible for maintenance of the facilities it owns that are provided for in this Facility Schedule.

9. Cost Responsibilities of the Parties:

Each Party will be fully responsible for the costs and liabilities related to the facilities it owns.

10. Other Terms and Conditions: None

GPS LOCATION:
N28* 58.3 / W99* 43.2



FACILITY SCHEDULE NO. 24

1. Name: **Citgo West**
2. Facility Location: The Citgo West Substation is located approximately 1 mile west of the intersection of I-37 and Hwy 358 in the City of Corpus Christi, Nueces County, Texas. The Point of Interconnection at the Citgo West Substation is at the substation dead-end structure that terminates the 138 kV transmission line from the Weil Tract Substation where the jumper conductors from the substation equipment physically contact the connectors on the transmission line conductors.
3. Delivery Voltage: 138 kV
4. Normal Operation of Interconnection: Closed
5. One-Line Diagram Attached: Yes
6. Facility Ownership Responsibilities of the Parties:

ETT owns the following facilities:

- the 138 kV transmission line from the Citgo West Substation to the Weil Tract Substation including the Optical Ground Wire (OPGW)
- entrance OPGW cable into and fiber distribution panel within the control house

AEP owns the following facilities:

- the following major transmission facilities within the Citgo West Substation that are not owned by Citgo:
 - 138 kV breakers #535, 665 and 4325
 - 138kV switches #727, 847, 664, 666, 4324, 4326, 526, 524, 536, 534, 967
 - one (1) station RTU

7. Operational Responsibilities of Each Party:

Each party controls and operates all the facilities it owns that are provided for in this Facility Schedule.

Per the December 21, 2007 Services Agreement between ETT and American Electric Power Service Corporation, AEP or its affiliates coordinate, direct, and perform all control center and field operation activities on the switchyard facilities owned by ETT. These activities shall include, but are not limited to, switching, clearances, and outages for planned maintenance and operations, emergency service restoration, and overall

coordination of such activities with ERCOT.

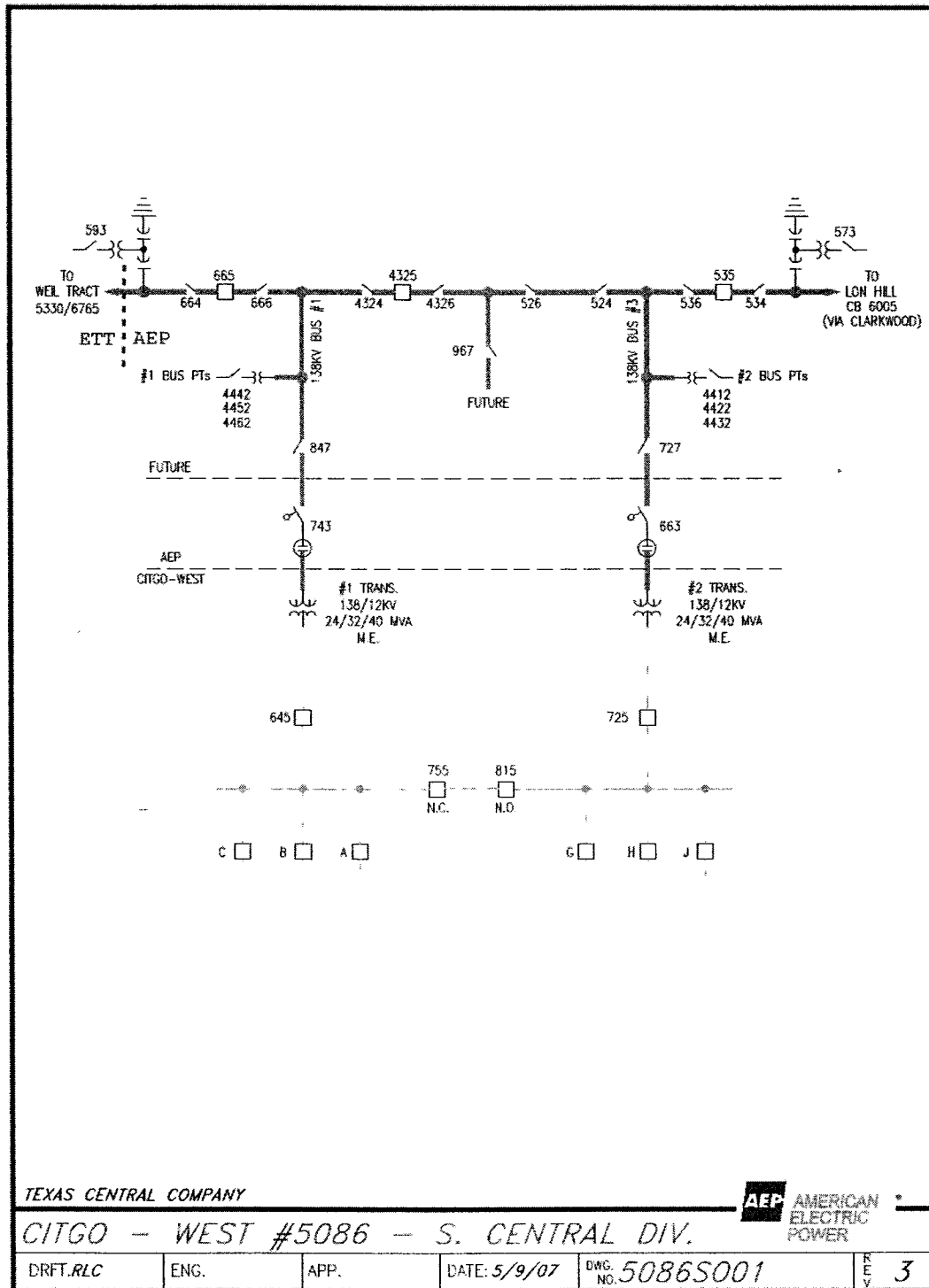
8. Maintenance Responsibilities of Each Party:

Each Party is responsible for maintenance of the facilities it owns that are provided for in this Facility Schedule.

9. Cost Responsibilities of the Parties:

Each Party will be fully responsible for the costs and liabilities related to the facilities it owns.

10. Other Terms and Conditions: None



FACILITY SCHEDULE NO. 25

1. Name: **Weil Tract**
2. Facility Location: The Weil Tract Substation is located at 300 Corn Products Rd in the City of Corpus Christi, Nueces County, Texas. The Point of Interconnection at the Weil Tract Substation is at the substation dead-end structure that terminates the 138 kV transmission line from the Citgo West Substation where the jumper conductors from the substation equipment physically contact the connectors on the transmission line conductors.
3. Delivery Voltage: 138 kV
4. Normal Operation of Interconnection: Closed
5. One-Line Diagram Attached: Yes
6. Facility Ownership Responsibilities of the Parties:

ETT owns the following facilities:
 - the 138 kV transmission line from the Weil Tract Substation to the Citgo West Substation including the Optical Ground Wire (OPGW)
 - entrance OPGW cable into and fiber distribution panel within the control house
AEP owns the following facilities:
 - the Weil Tract Substation including all of the facilities within it
7. Operational Responsibilities of Each Party:

Each party controls and operates all the facilities it owns that are provided for in this Facility Schedule.

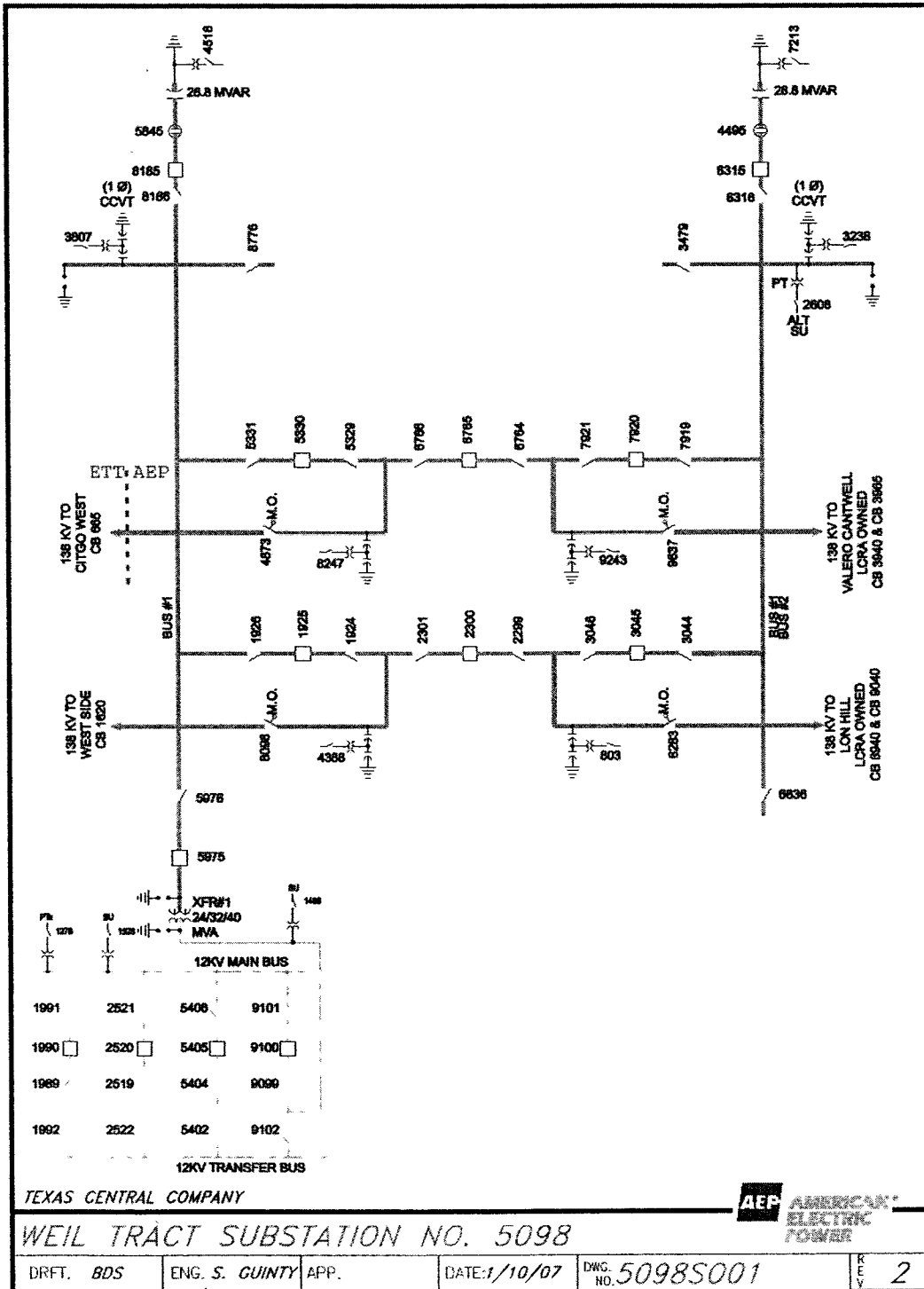
Per the December 21, 2007 Services Agreement between ETT and American Electric Power Service Corporation, AEP or its affiliates coordinate, direct, and perform all control center and field operation activities on the switchyard facilities owned by ETT. These activities shall include, but are not limited to, switching, clearances, and outages for planned maintenance and operations, emergency service restoration, and overall coordination of such activities with ERCOT.
8. Maintenance Responsibilities of Each Party:

Each Party is responsible for maintenance of the facilities it owns that are provided for in this Facility Schedule.

9. Cost Responsibilities of the Parties:

Each Party will be fully responsible for the costs and liabilities related to the facilities it owns.

10. Other Terms and Conditions: None



FACILITY SCHEDULE NO. 26

1. Name: **Lon C. Hill**
2. Facility Location: The Lon C. Hill Substation is located at 3601 Callicoatte Rd. in the City of Corpus Christi, Nueces County, Texas. The two (2) Points of Interconnection at the Lon C. Hill Substation are at the substation dead-end structure that terminates the 138/69 kV double circuit transmission line from the Hearn's Ferry Substation and Koch Upriver Road Substation where the jumper conductors from the substation equipment physically contact the connectors on the 138/69 kV transmission line conductors.
3. Delivery Voltage: 138 kV & 69 kV
4. Normal Operation of Interconnection: Closed
5. One-Line Diagram Attached: Yes
6. Facility Ownership Responsibilities of the Parties:

ETT owns the following facilities:

- 69kV conductors and static wires on approximately 5.7 miles of 138/69kV double circuit transmission structures (structures included) and approximately 1.2 miles of single circuit transmission structures (structures included) from the Lon C. Hill Substation to the Koch Upriver Substation
- 138kV conductors and static wires on approximately 5.7 miles of 138/69kV double circuit transmission structures (structures included) and approximately 0.5 miles on single circuit transmission structures (structures included) from the Lon C. Hill Substation to the Hearn's Ferry Substation

AEP owns the following facilities:

- the Lon C. Hill Substation including all of the facilities within it

7. Operational Responsibilities of Each Party:

Each party controls and operates all the facilities it owns that are provided for in this Facility Schedule.

Per the December 21, 2007 Services Agreement between ETT and American Electric Power Service Corporation, AEP or its affiliates coordinate, direct, and perform all control center and field operation activities on the switchyard facilities owned by ETT. These activities shall include, but are not limited to, switching, clearances, and outages

for planned maintenance and operations, emergency service restoration, and overall coordination of such activities with ERCOT.

8. Maintenance Responsibilities of Each Party:

Each Party is responsible for maintenance of the facilities it owns that are provided for in this Facility Schedule.

9. Cost Responsibilities of the Parties:

Each Party will be fully responsible for the costs and liabilities related to the facilities it owns.

10. Other Terms and Conditions: None

FACILITY SCHEDULE NO. 27

1. Name: **Hearns Ferry**
2. Facility Location: The Hearns Ferry Substation is located at 12301 Hearn Rd in the City of Corpus Christi, Nueces County, Texas. The two (2) Points of Interconnection at the Hearns Ferry Substation are at the substation dead-end structures that terminate the 138 kV transmission circuits from the Lon C. Hill Substation and Koch Upriver Road Substation where the jumper conductors from the substation equipment physically contact the connectors on the 138 kV transmission circuits' conductors.
3. Delivery Voltage: 138 kV
4. Normal Operation of Interconnection: Closed
5. One-Line Diagram Attached: Yes
6. Facility Ownership Responsibilities of the Parties:

ETT owns the following facilities:

- 138kV conductors and static wires on approximately 5.7 miles of 138/69kV double circuit transmission structures (structures included) and approximately 0.5 miles on single circuit transmission structures (structures included) from the Lon C. Hill Substation to the Hearns Ferry Substation
- 138kV conductors and static wires on the 138/69kV double circuit transmission structures (structures included) from the Hearns Ferry Substation to the Koch Upriver Substation

AEP owns the following facilities within the Hearns Ferry Substation*:

- one (1) station RTU
- 138 kV metering facilities

*Note: The Hearns Ferry Substation is owned by a retail customer of AEP

7. Operational Responsibilities of Each Party:

Each party controls and operates all the facilities it owns that are provided for in this Facility Schedule.

Per the December 21, 2007 Services Agreement between ETT and American Electric

Power Service Corporation, AEP or its affiliates coordinate, direct, and perform all control center and field operation activities on the switchyard facilities owned by ETT. These activities shall include, but are not limited to, switching, clearances, and outages for planned maintenance and operations, emergency service restoration, and overall coordination of such activities with ERCOT.

8. Maintenance Responsibilities of Each Party:

Each Party is responsible for maintenance of the facilities it owns that are provided for in this Facility Schedule.

9. Cost Responsibilities of the Parties:

Each Party will be fully responsible for the costs and liabilities related to the facilities it owns.

10. Other Terms and Conditions: None

FACILITY SCHEDULE NO. 28

1. Name: **Koch Upriver Road**
2. Facility Location: The Koch Upriver Road Substation is located at 8214 Upriver Road. & Tuloso Road in the City of Corpus Christi, Nueces County, Texas. The three (3) Points of Interconnection at the Koch Upriver Road Substation are at the substation dead-end structures that terminate the 138 kV transmission circuit from the Hearn's Ferry Substation, the 69 kV transmission circuit from the Lon C. Hill Substation and the 69 kV transmission line from the Valero West Substation where the jumper conductors from the substation equipment physically contact the connectors on the transmission circuits' conductors.
3. Delivery Voltage: 138 kV & 69 kV
4. Normal Operation of Interconnection: Closed
5. One-Line Diagram Attached: Yes
6. Facility Ownership Responsibilities of the Parties:

ETT owns the following facilities:

- 138kV and 69kV conductors and static wires on the 138/69kV double circuit transmission structures (structures included) from the Hearn's Ferry Substation to the Koch Upriver Substation
- the 69 kV transmission line from the Koch Upriver Road Substation to the Valero West Substation

AEP owns the following facilities within the Koch Upriver Substation*:

- the transmission facilities within the Koch Upriver Substation that are not owned by a retail customer of AEP as indicated on the attached one-line diagram
- all those transmission facilities indicated on the attached one-line drawings
- one (1) station RTU
- 138kV metering facilities

*Note: The Koch Upriver Substation is owned by a retail customer of AEP.

7. Operational Responsibilities of Each Party:

Each party controls and operates all the facilities it owns that are provided for in this

Facility Schedule.

Per the December 21, 2007 Services Agreement between ETT and American Electric Power Service Corporation, AEP or its affiliates coordinate, direct, and perform all control center and field operation activities on the switchyard facilities owned by ETT. These activities shall include, but are not limited to, switching, clearances, and outages for planned maintenance and operations, emergency service restoration, and overall coordination of such activities with ERCOT.

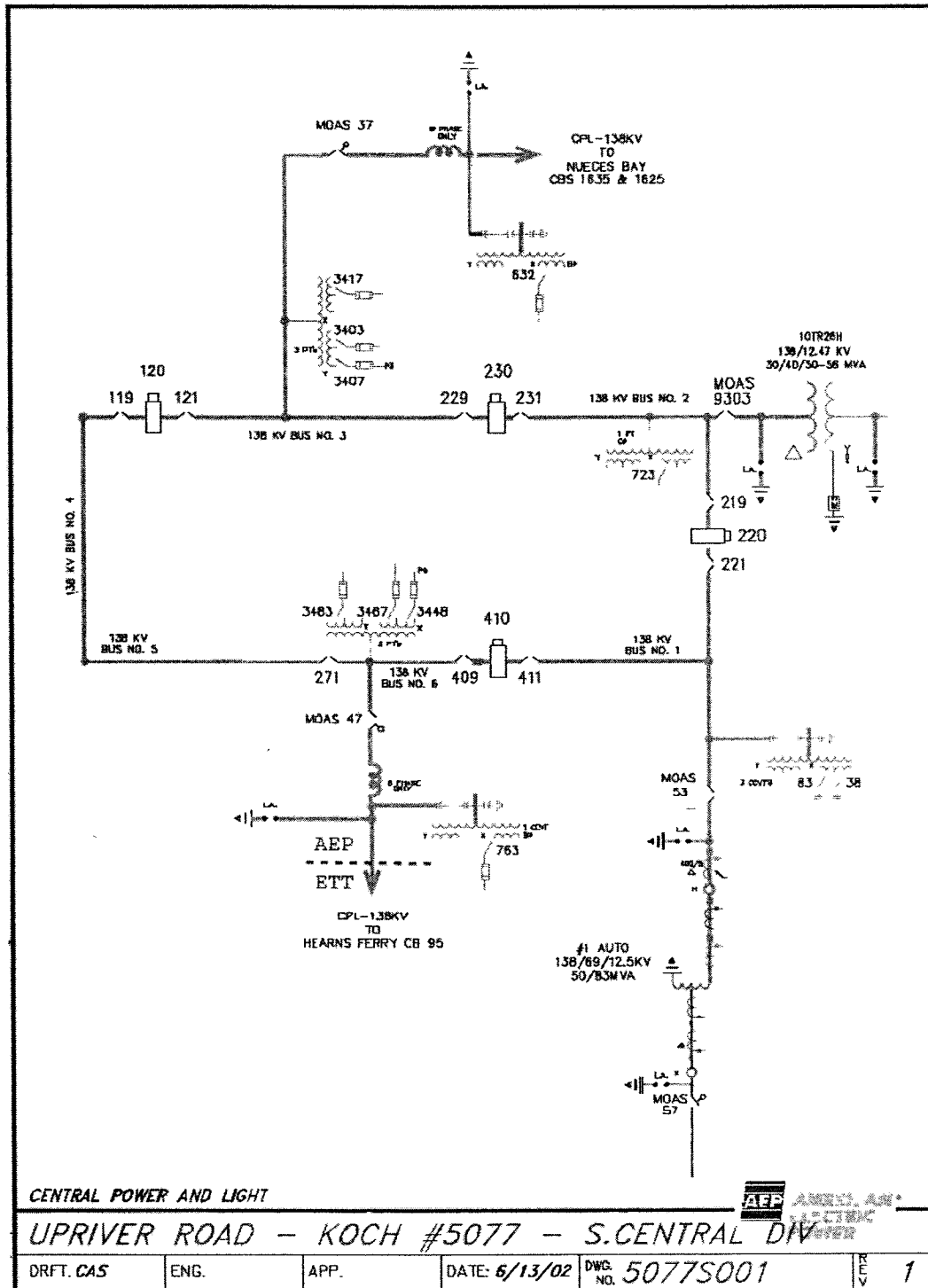
8. Maintenance Responsibilities of Each Party:

Each Party is responsible for maintenance of the facilities it owns that are provided for in this Facility Schedule.

9. Cost Responsibilities of the Parties:

Each Party will be fully responsible for the costs and liabilities related to the facilities it owns.

10. Other Terms and Conditions: None



FACILITY SCHEDULE NO. 29

1. Name: **Valero West**
2. Facility Location: The Valero West Substation is located at 6560 Upriver Road in the City of Corpus Christi, Nueces County, Texas. There are two (2) Points of Interconnection at the Valero West Substation are at the substation dead-end structures that terminate the 69 kV transmission lines from the Koch Upriver Road Substation and Valero East Substation where the jumper conductors from the substation equipment physically contact the connectors on the transmission lines' conductors.
3. Delivery Voltage: 69 kV
4. Normal Operation of Interconnection: Closed
5. One-Line Diagram Attached:
6. Facility Ownership Responsibilities of the Parties:

ETT owns the following facilities:

- the 69 kV transmission line from the Valero West Substation to the Koch Upriver Road Substation
- the 69 kV transmission line from the Valero West Substation to the Valero East Substation

AEP owns the following facilities:

- the transmission facilities within the Valero West Substation that are not owned by a retail customer of AEP
- one (1) station RTU
- 69kV metering facilities

7. Operational Responsibilities of Each Party:

Each party controls and operates all the facilities it owns that are provided for in this Facility Schedule.

Per the December 21, 2007 Services Agreement between ETT and American Electric Power Service Corporation, AEP or its affiliates coordinate, direct, and perform all control center and field operation activities on the switchyard facilities owned by ETT. These activities shall include, but are not limited to, switching, clearances, and outages

for planned maintenance and operations, emergency service restoration, and overall coordination of such activities with ERCOT.

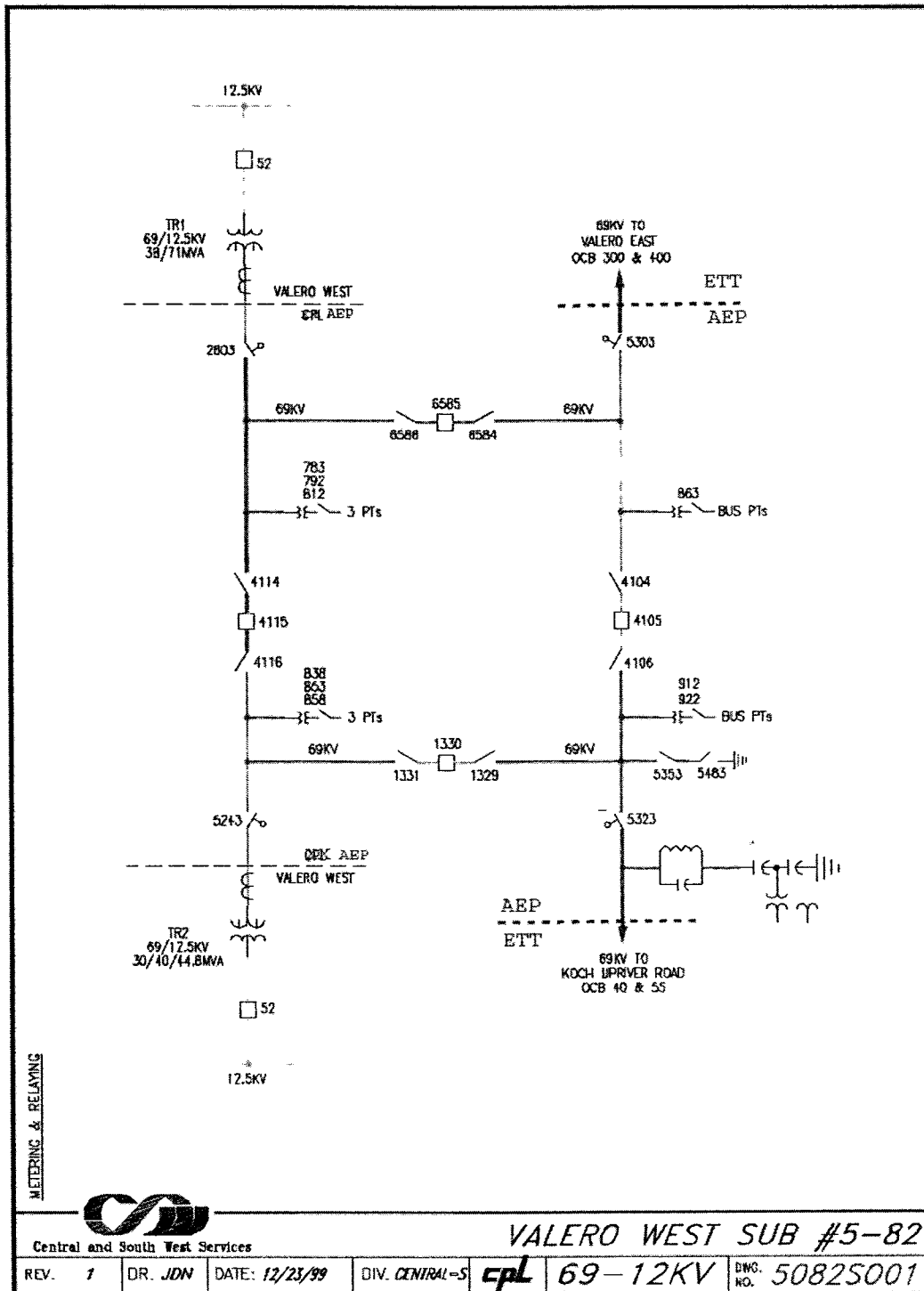
8. Maintenance Responsibilities of Each Party:

Each Party is responsible for maintenance of the facilities it owns that are provided for in this Facility Schedule.

9. Cost Responsibilities of the Parties:

Each Party will be fully responsible for the costs and liabilities related to the facilities it owns.

10. Other Terms and Conditions: None



FACILITY SCHEDULE NO. 30

1. Name: **Valero East**
2. Facility Location: The Valero East Substation is located at 6560 Up River Rd in the City of Corpus Christi, Nueces County, Texas. The two (2) Points of Interconnection at the Valero East Substation are at the substation dead-end structures that terminate the 69 kV transmission lines from the Valero West Substation and Highway 9 Substation where the jumper conductors from the substation equipment physically contact the connectors on the 69 kV transmission lines' conductors.
3. Delivery Voltage: 69 kV
4. Normal Operation of Interconnection: Closed
5. One-Line Diagram Attached: Yes
6. Facility Ownership Responsibilities of the Parties:

ETT owns the following facilities:

- the 69 kV transmission line from the Valero East to the Valero West Substation
- the 69 kV transmission line from the Valero East to the Highway 9 Substation including the 69 kV three pole switch at the Air Liquide tap and the approximately 100 foot 69 kV tap line to the Air Liquide Substation

AEP owns the following facilities:

- the Valero East Substation including all of the facilities within it that are not owned by a retail customer of AEP
- one (1) station RTU
- 69kV metering facilities

7. Operational Responsibilities of Each Party:

Each party controls and operates all the facilities it owns that are provided for in this Facility Schedule.

Per the December 21, 2007 Services Agreement between ETT and American Electric Power Service Corporation, AEP or its affiliates coordinate, direct, and perform all control center and field operation activities on the switchyard facilities owned by ETT. These activities shall include, but are not limited to, switching, clearances, and outages

for planned maintenance and operations, emergency service restoration, and overall coordination of such activities with ERCOT.

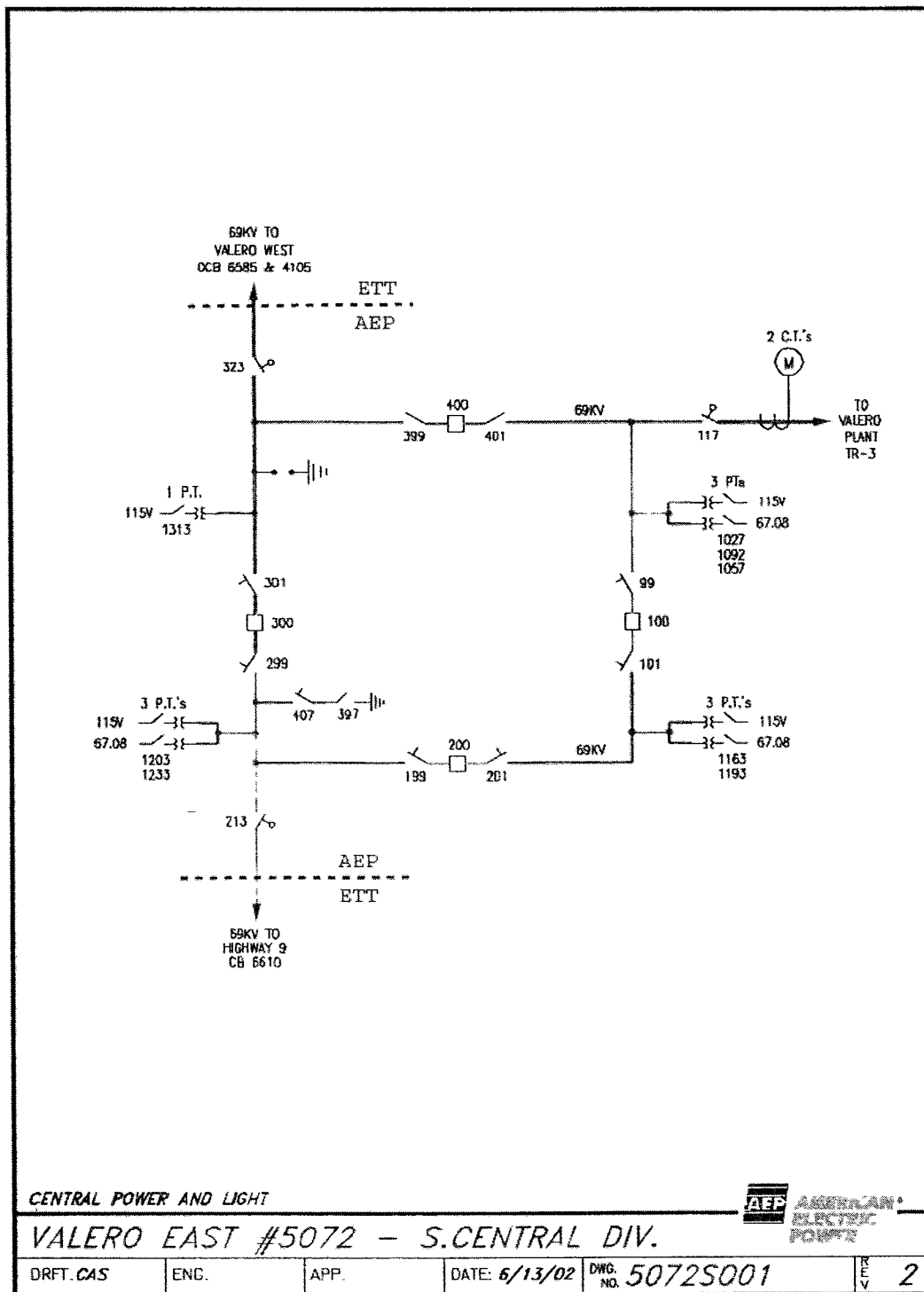
8. Maintenance Responsibilities of Each Party:

Each Party is responsible for maintenance of the facilities it owns that are provided for in this Facility Schedule.

9. Cost Responsibilities of the Parties:

Each Party will be fully responsible for the costs and liabilities related to the facilities it owns.

10. Other Terms and Conditions: None



FACILITY SCHEDULE NO. 31

1. Name: **Highway 9**
2. Facility Location: The Highway 9 Substation is located at 4509 Leopard St. in the City of Corpus Christi, Nueces County, Texas. The Point of Interconnection at the Highway 9 Substation is at the substation dead-end structure that terminates the 69 kV transmission line from the Valero East Substation where the jumper conductors from the substation equipment physically contact the connectors on the transmission line conductors.
3. Delivery Voltage: 69 kV
4. Normal Operation of Interconnection: Closed
5. One-Line Diagram Attached: Yes
6. Facility Ownership Responsibilities of the Parties:

ETT owns the following facilities:

 - the 69 kV transmission line from the Highway 9 Substation to the Valero East Substation including the 69 kV three pole switch at the Air Liquide tap and the approximately 100 foot 69 kV tap line to the Air Liquide Substation

AEP owns the following facilities:

 - the Highway 9 Substation including all the facilities within it
7. Operational Responsibilities of Each Party:

Each party controls and operates all the facilities it owns that are provided for in this Facility Schedule.

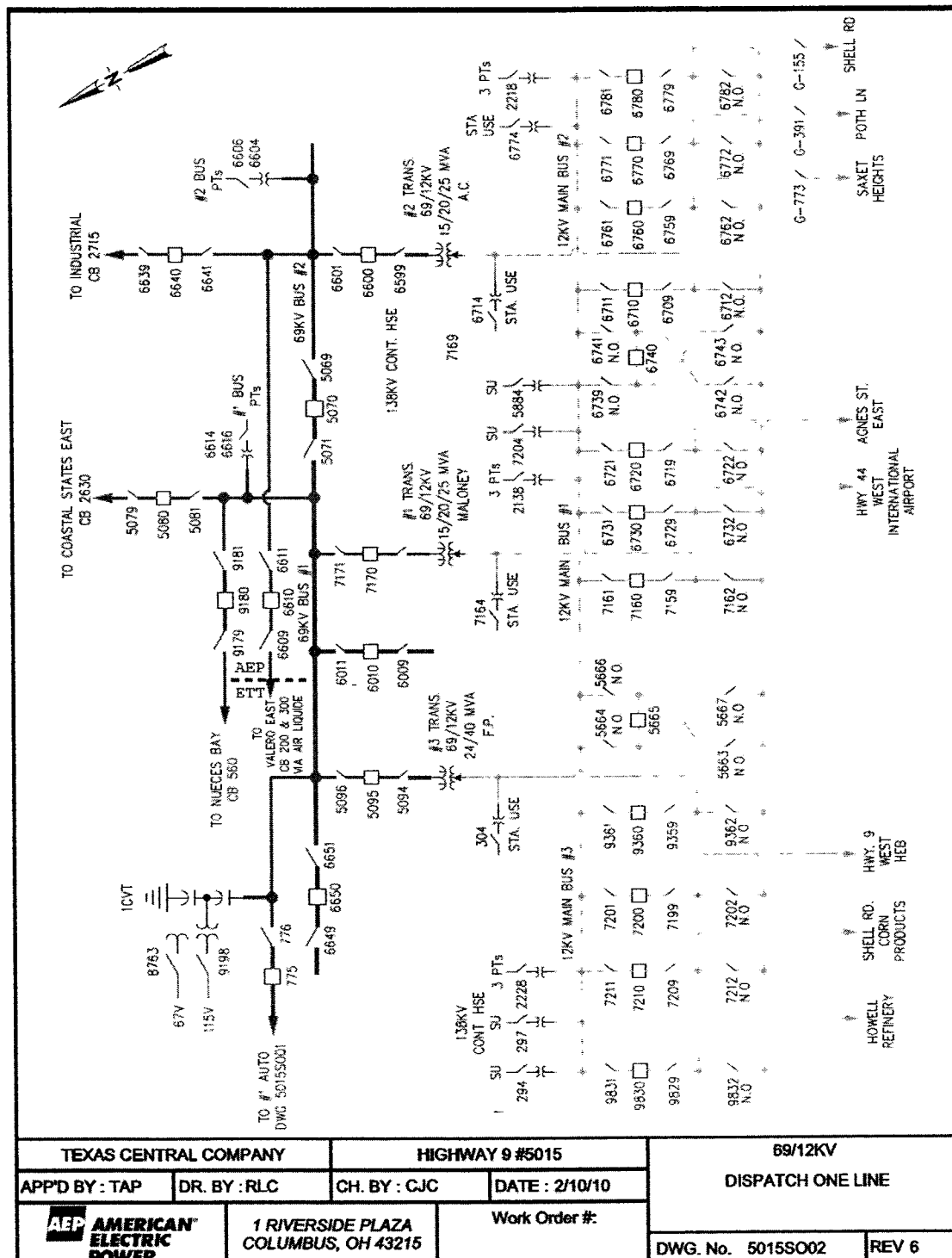
Per the December 21, 2007 Services Agreement between ETT and American Electric Power Service Corporation, AEP or its affiliates coordinate, direct, and perform all control center and field operation activities on the switchyard facilities owned by ETT. These activities shall include, but are not limited to, switching, clearances, and outages for planned maintenance and operations, emergency service restoration, and overall coordination of such activities with ERCOT.
8. Maintenance Responsibilities of Each Party:

Each Party is responsible for maintenance of the facilities it owns that are provided for in this Facility Schedule.

9. Cost Responsibilities of the Parties:

Each Party will be fully responsible for the costs and liabilities related to the facilities it owns.

10. Other Terms and Conditions: None



FACILITY SCHEDULE NO. 32

1. Name: **Nueces Bay**
2. Location: The Nueces Bay Substation is located at 2002 Navigation Blvd in the City of Corpus Christi in Nueces County, Texas. The eleven (11) Points of Interconnection at the 138 kV and 69 kV Nueces Bay substations are located at i) the substation dead-end structures that terminate the 138 kV transmission lines from the Koch Upriver Road Substation, Morris Street Substation, Whitepoint Substation, and Highway 9 Substation and the 69 kV transmission line from the Industrial Substation where the jumper conductors from the substation equipment physically contact the connectors on the transmission lines' conductors, ii) the substation risers that terminate the two de-energized 69 kV transmission lines from the Highway 9 Substation and iii) the 69 kV bushings of the two distribution transformers #1 and #2.
3. Voltage at Points of Interconnection: 138 kV & 69 kV
4. Normal Operation of Interconnection: Closed
5. One-Line Diagram Attached: Yes
6. Description of Facilities Installed and Owned by Each Party:

ETT owns the following facilities:

 - the substation property, including perimeter fencing, as well as all transmission facilities, including the substation dead-end structures, within the Nueces Bay 138 kV Substation between i) the substation dead-end structure to which is attached the LCRA Transmission Service Corporation (LCRA TSC) 138kV transmission lines to the Lon C. Hill Substation and Citgo North Oak Park Substation, ii) the substation dead-end structure to which is attached the 138kV transmission lines to the Koch Upriver Road Substation, Morris Street Substation, Whitepoint Substation and Highway 9 Substation, and iii) the 138kV transmission tie line to the Nueces Bay WLE, LP Unit #7 generator step-up transformer of the Nueces Bay WLE Energy Center
 - the substation property, including perimeter fencing, as well as all transmission facilities, including the substation dead-end structures, within the Nueces Bay 69kV Substation between i) the substation dead-end structure to which is attached the 69kV transmission line to the Industrial Substation, ii) the substation risers to which are attached the two de-energized 69 kV transmission lines to the Highway 9 Substation, and iii) the 69kV bushings of the two distribution transformers #1 and #2
 - 138kV transmission line between the Nueces Bay 138kV Substation and the Nueces Bay 69kV Substation excluding the structures, static wires, Optical Ground Wire (OPGW) and OPGW entrance cables in each substation

- one (1) air cooled 69kV series reactor within the Nueces Bay 69kV Substation on the 69kV transmission line to the Industrial Substation
- the control house structure within the Nueces Bay 138kV Substation and the Nueces Bay 69kV Substation
- one (1) station RTU within the Nueces Bay 138kV Substation
- all protective, metering, or control facilities and equipment within the Nueces Bay 138kV Substation and Nueces Bay 69kV Substation not functioning exclusively as protective, metering, or control devices for, or in support of the operation or maintenance of distribution facilities and equipment

AEP owns the following facilities:

- the 138kV transmission line to the Koch Upriver Road Substation
- the 138 kV transmission line to the Morris Street Substation
- the two-circuit 138kV transmission line to the Whitepoint Substation
- the two 138kV transmission lines to the Highway 9 Substation
- the 69kV transmission line to the Industrial Substation
- the two 69kV transmission lines to the Highway 9 Substation
- the high side bushings of the distribution transformers in the 69kV Nueces Bay Substation
- one (1) station RTU within the Nueces Bay 69kV Substation
- the following facilities within the ground grid boundary of the Nueces Bay 69kV Substation:
 - station service transformer if energized by distribution facilities
 - instrument transformers if energized by distribution facilities
 - ground grid
 - foundations
 - cable tray, trench or raceway or conduit bank
 - lighting
 - lightning rods and statics
 - spill prevention and retention facilities
- all structures including static wires and OPGW between the Nueces Bay 138 kV Substation and the Nueces Bay 69 kV Substation on which are located the 138 kV transmission tie conductors between the Nueces Bay 138 kV Substation and the Nueces Bay 69kV Substation and the conductors that comprise the 69kV transmission line to the Industrial Substation
- all oil circulation facilities including the risers and oil pump houses associated with transmission oil filled 69 kV cables and all oil filled 138kV cables that comprise part of the circuit #2 of the Nueces Bay to Highway 9 138kV transmission line and the de-energized 138kV circuit # 1 from the Nueces Bay 138kV Substation to the Nueces Bay 69kV Substation property

- all distribution facilities within the Nueces Bay 69kV Substation including the distribution transformers and all facilities and equipment functioning exclusively as protective, metering, or control devices for, or in support of the operation or maintenance of distribution facilities and equipment except for the circuit switcher

7. Operational Responsibilities of Each Party:

Each party controls and operates all the facilities it owns that are provided for in this Facility Schedule.

Per the December 21, 2007 Services Agreement between ETT and American Electric Power Service Corporation, AEP or its affiliates coordinate, direct, and perform all control center and field operation activities on the switchyard facilities owned by ETT. These activities shall include, but are not limited to, switching, clearances, and outages for planned maintenance and operations, emergency service restoration, and overall coordination of such activities with ERCOT.

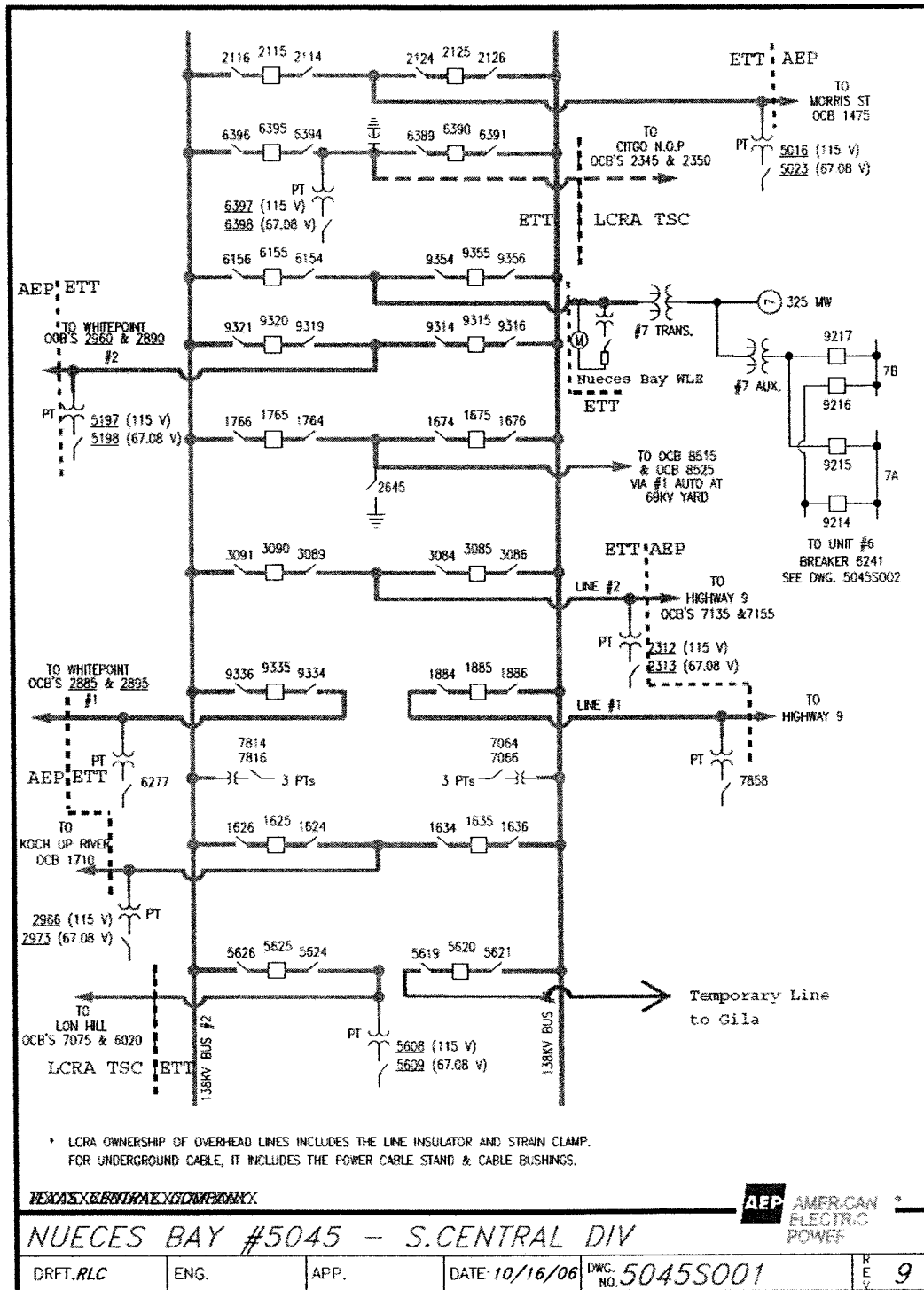
8. Maintenance Responsibilities of Each Party:

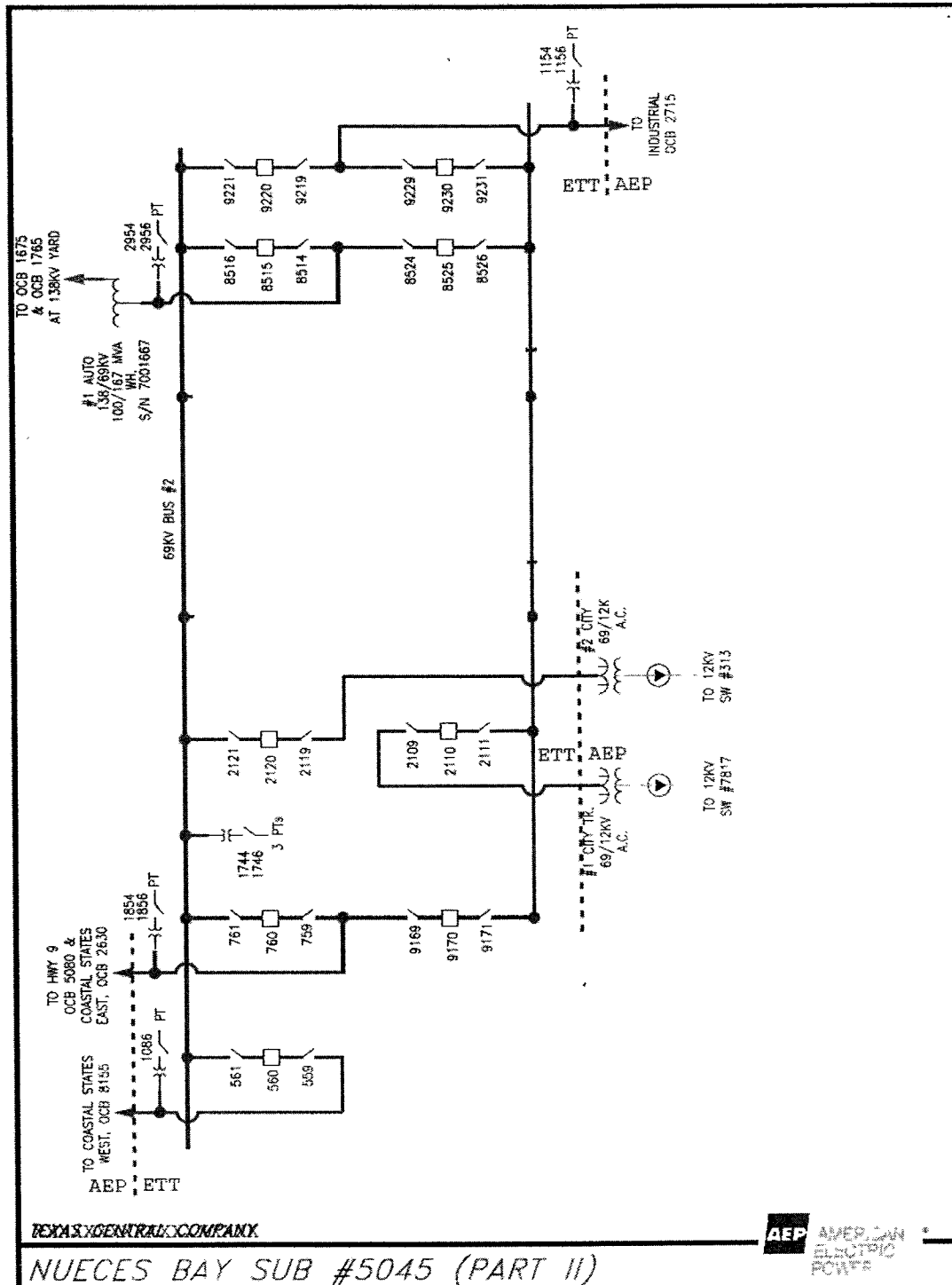
Each Party is responsible for maintenance of the facilities it owns that are provided for in this Facility Schedule.

9. Cost Responsibilities of the Parties:

Each Party will be fully responsible for the costs and liabilities related to the facilities it owns.

10. Other Terms and Conditions: None





FACILITY SCHEDULE NO. 33

1. Name: **Laguna**
2. Facility Location: The Laguna Substation is located at 498 Husslin Hornet in the City of Corpus Christi, Nueces County, Texas. The Point of Interconnection is located at the 69 kV bushings of the distribution transformer.
3. Delivery Voltage: 69 kV
4. Normal Operation of Interconnection: Closed
5. One-Line Diagram Attached: Yes
6. Facility Ownership Responsibilities of the Parties:

ETT owns the following facilities:

- all transmission facilities in the Laguna Substation between (i) the substation dead-end structures to which are attached the 69kV transmission line to the Airline Substation, and the 69kV transmission line to the Naval Base Substation (which dead-end structures are included), and (ii) the high side bushings of the distribution transformer in the Laguna Substation (which bushings are owned by AEP)
- all protective, metering, or control facilities and equipment within the Laguna Substation not functioning exclusively as protective, metering, or control devices for, or in support of the operation or maintenance of distribution facilities and equipment

AEP owns the following facilities:

- all distribution facilities within the Laguna Substation including the distribution transformers and all facilities and equipment functioning exclusively as protective, metering, or control devices for, or in support of the operation or maintenance of distribution facilities and equipment except for the circuit switcher
- the substation property, including perimeter fencing, as well as the control house structure within the Laguna Substation
- one (1) station RTU
- one (1) wireless remote communication device
- the following facilities within the ground grid boundary of the Laguna Substation:
 - station service transformer if energized by distribution facilities
 - instrument transformers if energized by distribution facilities
 - ground grid
 - foundations

- cable tray, trench or raceway or conduit bank
- lighting
- lightning rods and statics
- spill prevention and retention facilities

7. Operational Responsibilities of Each Party:

Each party controls and operates all the facilities it owns that are provided for in this Facility Schedule.

Per the December 21, 2007 Services Agreement between ETT and American Electric Power Service Corporation, AEP or its affiliates coordinate, direct, and perform all control center and field operation activities on the switchyard facilities owned by ETT. These activities shall include, but are not limited to, switching, clearances, and outages for planned maintenance and operations, emergency service restoration, and overall coordination of such activities with ERCOT.

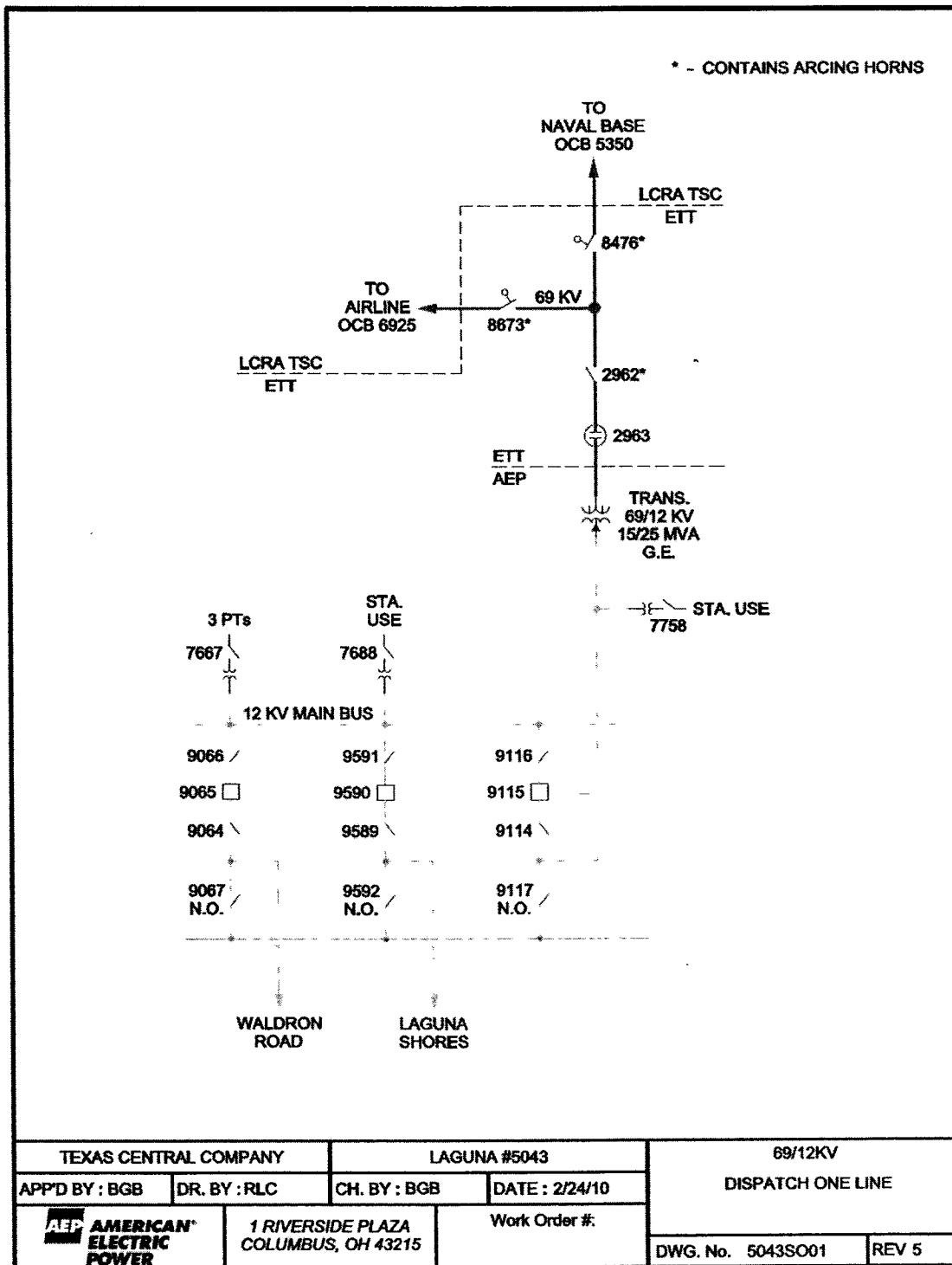
8. Maintenance Responsibilities of Each Party:

Each Party is responsible for maintenance of the facilities it owns that are provided for in this Facility Schedule.

9. Cost Responsibilities of the Parties:

Each Party will be fully responsible for the costs and liabilities related to the facilities it owns.

10. Other Terms and Conditions: None



FACILITY SCHEDULE NO. 34

1. Name: **McKenzie Road**
2. Facility Location: The McKenzie Road Substation is located at 1310 McKenzie Road in the City of Corpus Christi, Nueces County, Texas. The Point of Interconnection is located at the substation dead-end structure that terminates the 138 kV transmission line from the Westside Substation where the jumper conductors from the substation equipment physically contact the connectors on the 138 kV transmission line conductors.
3. Delivery Voltage: 138 kV
4. Normal Operation of Interconnection: Closed
5. One-Line Diagram Attached: Yes
6. Facility Ownership Responsibilities of the Parties:

ETT owns the following facilities:

- approximately 11.5 miles of three phase 138 kV transmission line conductor and 10.9 miles of structures from the Westside Substation to the McKenzie Road Substation

Note: LCRA Transmission Service Corporation owns the structures on approximately 0.6 miles of the line proximate to the McKenzie Road Substation

AEP owns the following facilities:

- the McKenzie Road Substation including all of the facilities within it
- static wire and OPGW fiber attached to the structures of the 138 kV transmission line from the Westside Substation to the McKenzie Road Substation
- the 138 kV transmission line from the McKenzie Road Substation to the Equistar Corpus Christi Substation

7. Operational Responsibilities of Each Party:

Each party controls and operates all the facilities it owns that are provided for in this Facility Schedule.

Per the December 21, 2007 Services Agreement between ETT and American Electric Power Service Corporation, AEP or its affiliates coordinate, direct, and perform all

control center and field operation activities on the switchyard facilities owned by ETT. These activities shall include, but are not limited to, switching, clearances, and outages for planned maintenance and operations, emergency service restoration, and overall coordination of such activities with ERCOT.

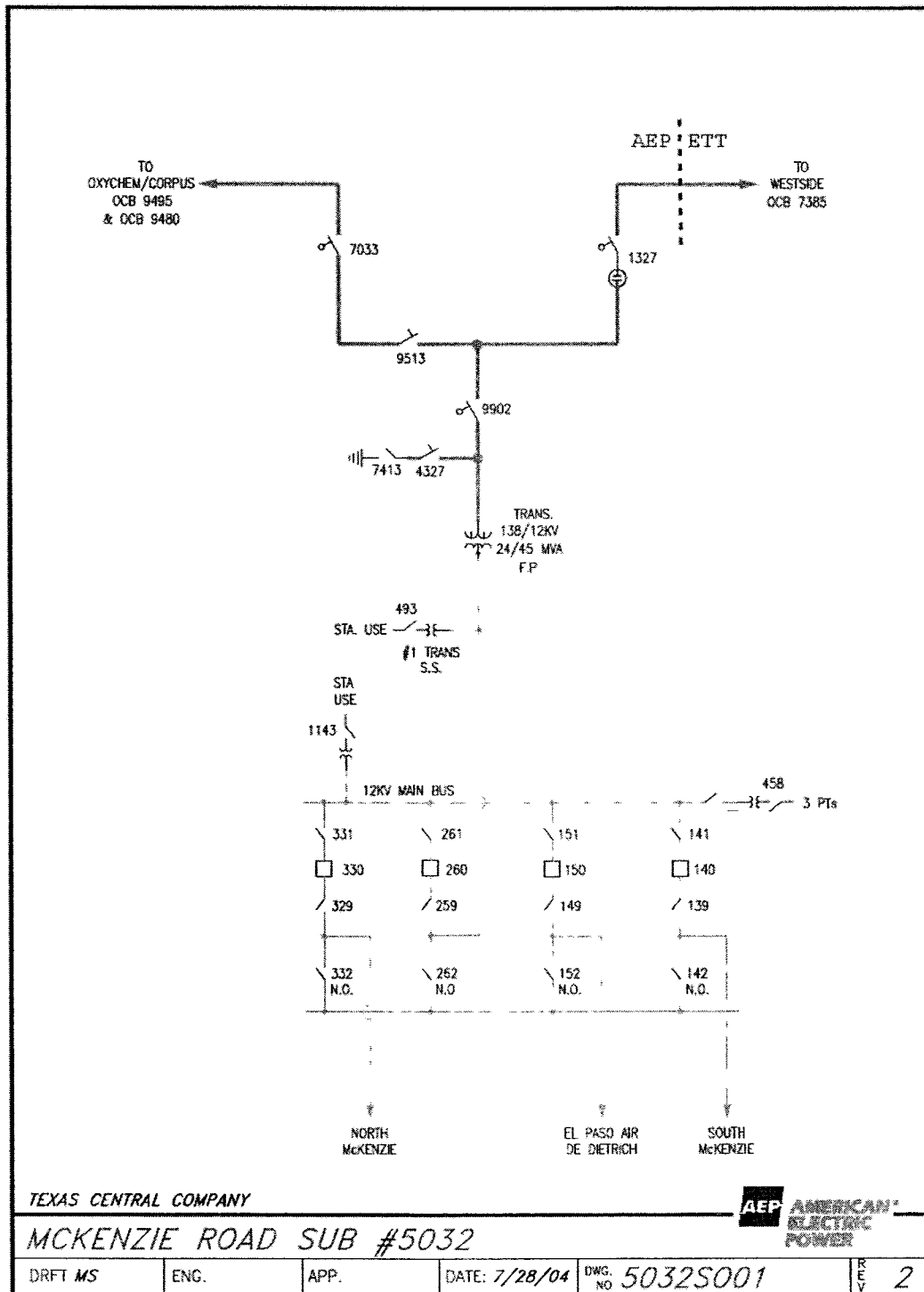
8. Maintenance Responsibilities of Each Party:

Each Party is responsible for maintenance of the facilities it owns that are provided for in this Facility Schedule.

9. Cost Responsibilities of the Parties:

Each Party will be fully responsible for the costs and liabilities related to the facilities it owns.

10. Other Terms and Conditions: None



FACILITY SCHEDULE NO. 35

1. Name: **Westside**
2. Facility Location: The Westside Substation is located at 1400 Holly Road in the City of Corpus Christi, Nueces County, Texas. The Point of Interconnection at the Westside Substation is at the substation dead-end structure that terminates the 138 kV transmission line from the McKenzie Road substation where the jumper conductors from the substation equipment physically contact the connectors on the 138 kV transmission line conductors.
3. Delivery Voltage: 138 kV
4. Normal Operation of Interconnection: Closed
5. One-Line Diagram Attached: Yes
6. Facility Ownership Responsibilities of the Parties:

ETT owns the following facilities:

- approximately 11.5 miles of three phase 138 kV transmission line conductor and 10.9 miles of structures and static wire from the Westside Substation to the McKenzie Road Substation

Note: LCRA Transmission Service Corporation owns the structures on approximately 0.6 miles of the line proximate to the McKenzie Road Substation

AEP owns the following facilities:

- the Westside Substation including all of the facilities within it
- static wire and OPGW fiber attached to the structures of the 138 kV transmission line from the Westside Substation to the McKenzie Road Substation
- fiber distribution panel associated with the OPGW on the Westside to McKenzie Road transmission line
- the 138 kV transmission line from the Westside Substation to the Airline Substation via the Cabaniss Substation
- the 138 kV transmission line from the Westside Substation to the Cantwell Substation via the Weil Tract Substation
- the 138 kV transmission line from the Westside Substation to the Javelina Substation via the West Oso Substation

- the 138 kV transmission line from the Westside Substation to the Morris Street Substation
- the 138 kV transmission line from the Westside Substation to the Holly Substation
- the 138 kV transmission line from the Westside Substation to the Arcadia Substation

7. Operational Responsibilities of Each Party:

Each party controls and operates all the facilities it owns that are provided for in this Facility Schedule.

Per the December 21, 2007 Services Agreement between ETT and American Electric Power Service Corporation, AEP or its affiliates coordinate, direct, and perform all control center and field operation activities on the switchyard facilities owned by ETT. These activities shall include, but are not limited to, switching, clearances, and outages for planned maintenance and operations, emergency service restoration, and overall coordination of such activities with ERCOT.

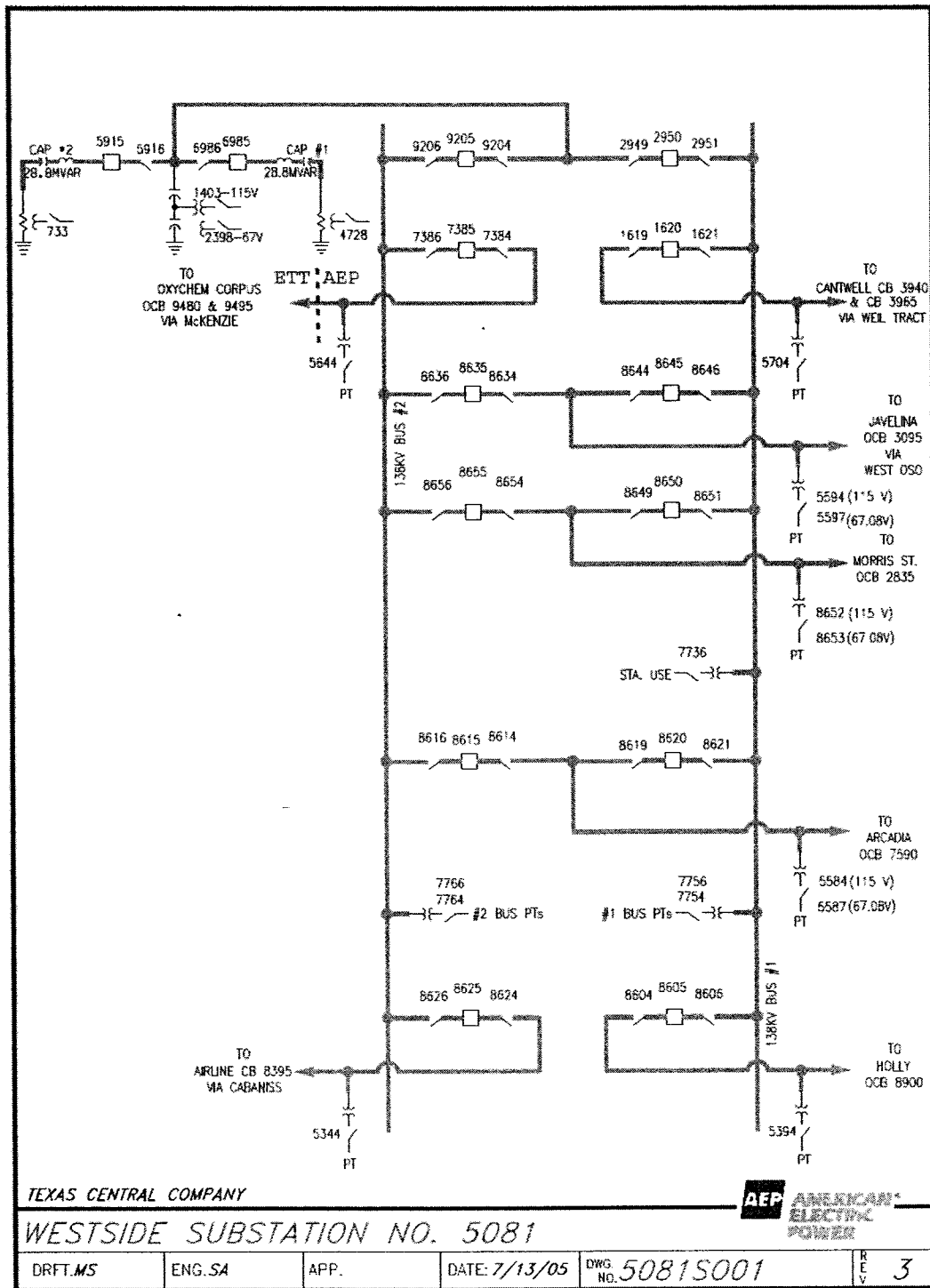
8. Maintenance Responsibilities of Each Party:

Each Party is responsible for maintenance of the facilities it owns that are provided for in this Facility Schedule.

9. Cost Responsibilities of the Parties:

Each Party will be fully responsible for the costs and liabilities related to the facilities it owns.

10. Other Terms and Conditions: None



FACILITY SCHEDULE NO. 36

1. Name: **Barney M. Davis**
2. Facility Location: The Barney M. Davis Substation is located at 4301 Waldron Road in the City of Corpus Christi, Nueces County, Texas. The five (5) Points of Interconnection at the Barney M. Davis Substation are located at the substation dead-end structures that terminate the 138 kV transmission lines from the Nelson Sharpe Substation via the Alazan Substation, Holly Substation via the Rodd Field Substation, Airline West Substation, Airline East Substation via the Woolridge Substation, and Airline Substation via the Pharoah Substation where the jumper conductors from the substation equipment physically contact the connectors on the transmission lines' conductors.
3. Delivery Voltage: 138 kV
4. Normal Operation of Interconnection: Closed
5. One-Line Diagrams Attached: Yes
6. Facility Ownership Responsibilities of the Parties:

ETT owns the following facilities:

- all transmission facilities, including the substation dead-end structures, within the Barney M. Davis Substation between and including the substation dead-end structures to which are attached i) the 138kV transmission lines to the Alazan, Rodd Field, Airline West, Woolridge and Pharoah substations and ii) the 138kV transmission tie lines to Unit #1, Unit #2, Unit #3, Unit #4 and the reserve auxiliary transformer of the Barney M. Davis LP Energy Center
- 28 MVAR capacitor banks #1 and #2
- the substation property, including perimeter fencing, as well as the control house structure within the Barney M. Davis 138kV Substation
- one (1) station RTU
- all protective, metering, or control facilities and equipment in the Barney Davis Substation not functioning exclusively as protective, metering, or control devices for, or in support of the operation or maintenance of distribution facilities and equipment

AEP owns the following facilities:

- the 138kV transmission line to the Nelson Sharpe Substation via the Alazan Substation

- the 138kV transmission line to the Holly Substation via the Rodd Field Substation
- the 138kV transmission line to the Airline West Substation
- the 138kV transmission line to the Airline East Substation via the Woolridge Substation
- the 138kV transmission line to the Airline Substation via the Pharoah Substation
- fiber entrance cables and distribution panels that are associated with the Optical Ground Wire (OPGW) fiber to the Rodd Field and Alazan substations
- station and telecom multiplex units including associated interface and power equipment
- monopole antenna structure including associated interface and power equipment

7. Operational Responsibilities of Each Party:

Each party controls and operates all the facilities it owns that are provided for in this Facility Schedule.

Per the December 21, 2007 Services Agreement between ETT and American Electric Power Service Corporation, AEP or its affiliates coordinate, direct, and perform all control center and field operation activities on the switchyard facilities owned by ETT. These activities shall include, but are not limited to, switching, clearances, and outages for planned maintenance and operations, emergency service restoration, and overall coordination of such activities with ERCOT.

8. Maintenance Responsibilities of Each Party:

Each Party is responsible for maintenance of the facilities it owns that are provided for in this Facility Schedule.

9. Cost Responsibilities of the Parties:

Each Party will be fully responsible for the costs and liabilities related to the facilities it owns.

10. Other Terms and Conditions: None

