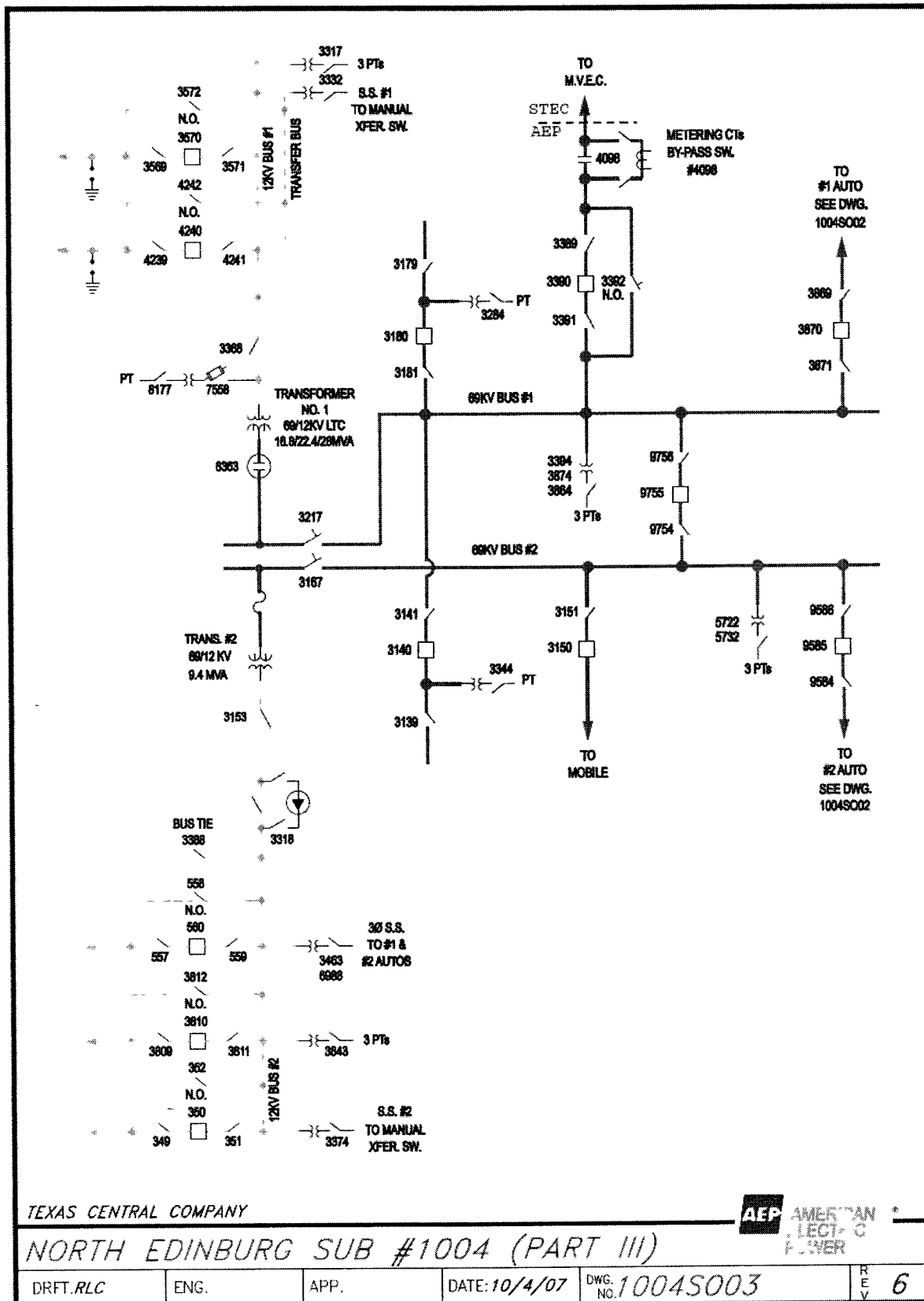


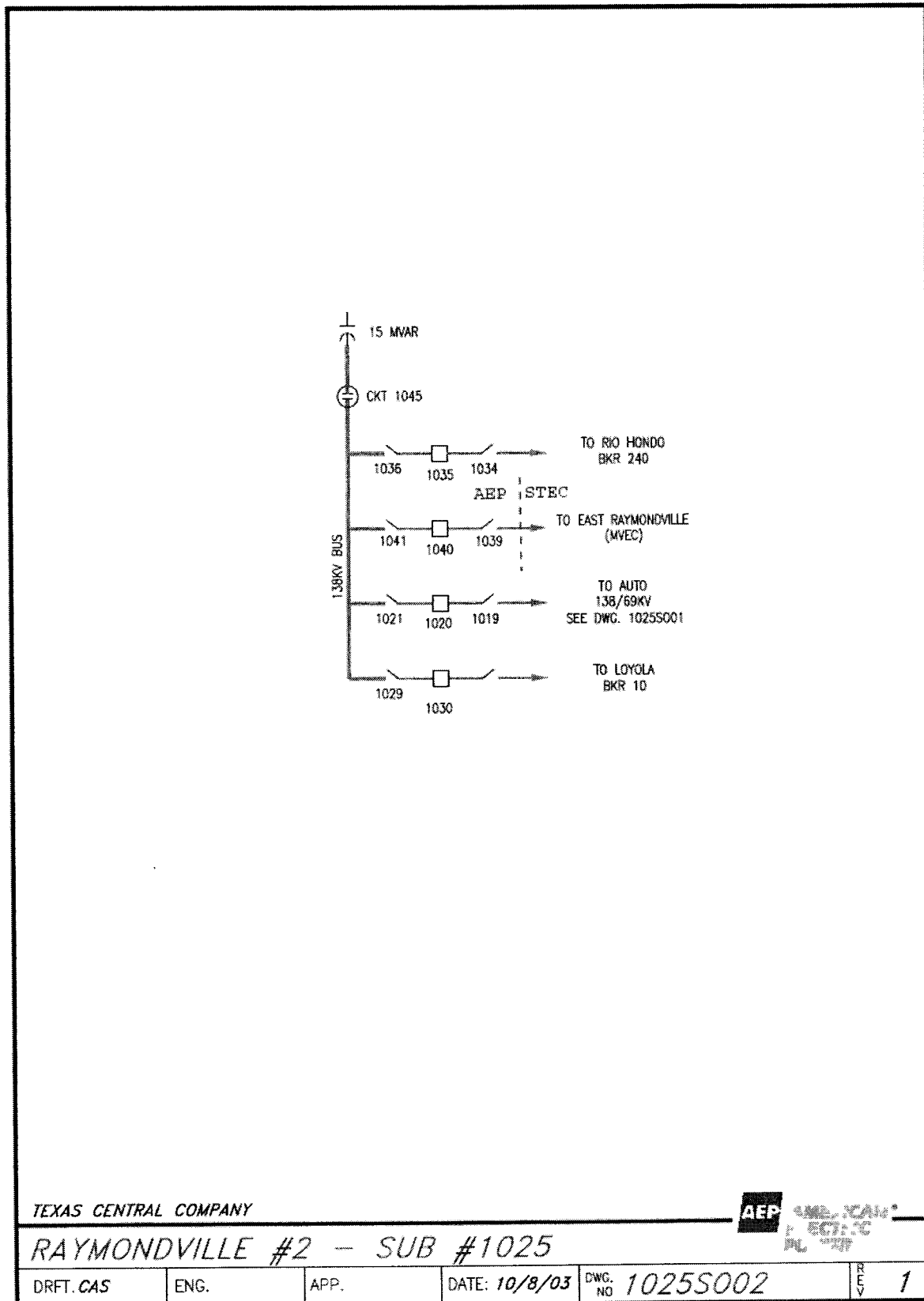
FACILITY SCHEDULE NO. 38

1. Name: **North Edinburg 69**
2. Facility Location: Company's North Edinburg Substation Company's North Edinburg Substation located on the northwest side of the Monte Cristo Road (FM 1925) and McColl Road intersection in Edinburg, Hidalgo County
3. Voltage at Point of Interconnection: 69kV
4. Metered Voltage: 69kV, line monitoring meter
5. Loss Adjustment Due To Meter Location: No
6. Normal Operation of Interconnection: Closed
7. One-Line Diagram Attached: Yes
8. Description of Facilities Installed and Owned by Each Party:
Company owns all equipment at this substation except for the following, which is owned by MVEC:
 - Cooperative SCADA monitoring and control equipment
 - Weather monitoring and communications equipment
 - Fiber communications equipment used for Cooperative communication
 - Cooperative's 69kV Faysville tap line connecting to Company's deadend structure inside the station
9. Operational Responsibilities of Each Party:
Cooperative operates Breaker #3390.
Company operates all remaining equipment at this station.
10. Maintenance Responsibilities of Each Party:
Each Party is responsible for the maintenance of its own equipment.
Company will maintain the site including vegetation control.
11. Other Terms and Conditions:
Cooperative has access to the station with a lock in the fence gate(s) and access to the control house.



FACILITY SCHEDULE NO. 39

1. Name: **Raymondville No. 2**
2. Facility Location: Company's Raymondville No. 2 Substation approx one mile east of the FM 186 and Hwy 77 Bypass intersection near Raymondville, Willacy County
3. Voltage at Point of Interconnection: 138kV
4. Metered Voltage: 138kV, line monitoring meter
5. Loss Adjustment Due To Meter Location: No
6. Normal Operation of Interconnection: Closed
7. One-Line Diagram Attached: Yes
8. Description of Facilities Installed and Owned by Each Party:
Company owns all equipment at this substation except for the following, which is owned by Cooperative:
 - Weather monitoring and communications equipment.
 - Cooperative SCADA monitoring equipment.
 - Communications equipment used for Cooperative communication.
 - Cooperative's 138kV line connecting to Company's deadend structure in the station
9. Operational Responsibilities of Each Party:
Cooperative operates breaker 1040.
Company operates all other equipment at this station.
10. Maintenance Responsibilities of Each Party:
Each Party is responsible for the maintenance of its own equipment.
Company will maintain the site including vegetation control.
11. Other Terms and Conditions:
Cooperative has access to the station with a lock in the fence gate(s) and access to the control room.

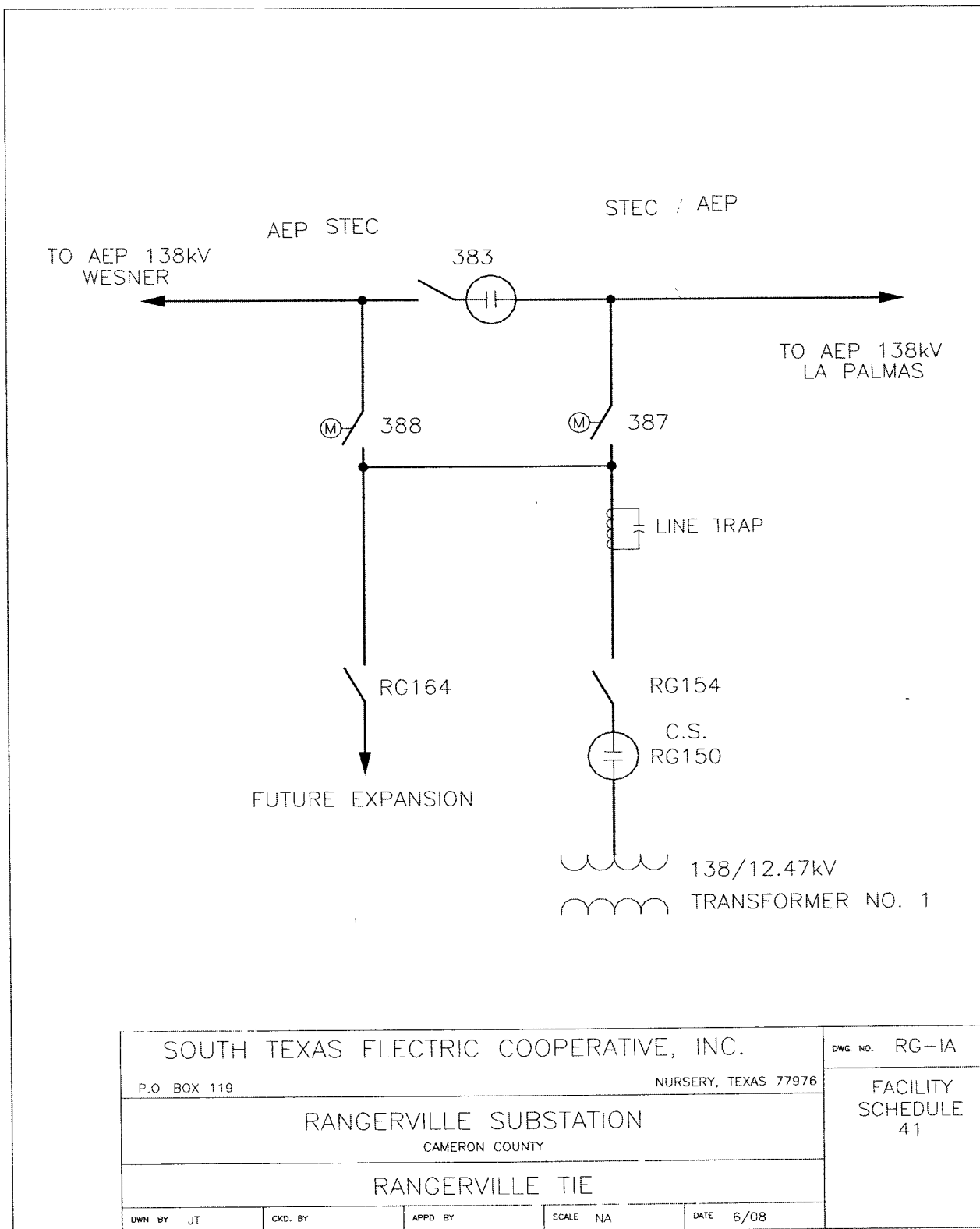


FACILITY SCHEDULE NO. 40

1. Name: **Port Mansfield Tie Line**
2. Facility Location: Pole mounted meter on the East Ranch on Company's last pole in the 12.47 kV feeder, approximately 20 miles east of Company's Raymondville No. 2 Substation.
3. Voltage at Point of Interconnection: 12.47 kV
4. Metered Voltage: 12.47 kV
5. Loss Adjustment Due To Meter Location: Yes.
6. Normal Operation of Interconnection: Closed
7. One-Line Diagram Attached: No
8. Description of Facilities Installed and Owned by Each Party:
Company owns the metering equipment.
Cooperative owns the switch that isolates its portion of the 12.47 kV circuit, an RTU and communication equipment. Magic Valley Electric Cooperative owns the distribution line connected past this meter point.
9. Operational Responsibilities of Each Party:
Each party will operate its own equipment.
Any switching shall be performed using good utility practice after informing the other party.
10. Maintenance Responsibilities of Each Party:
Maintenance is the responsibility of the equipment owner except that Cooperative shall maintain the meter, instrument transformers, and the isolation device(s).
11. Other Terms and Conditions:
Company calculates the loss factor based upon resistances between this meter point and the ERCOT system.

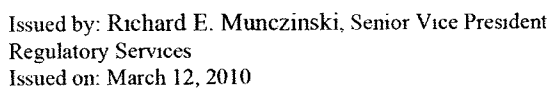
FACILITY SCHEDULE NO. 41

1. Name: **Rangerville**
2. Facility Location: Cooperative Rangerville Substation at 18669 FM 800,
Rangerville, Cameron County
3. Voltage at Point of Interconnection: 138kV
4. Metered Voltage: 12.47kV
5. Loss Adjustment Due To Meter Location: Yes
6. Normal Operation of Interconnection: Closed
7. One-Line Diagram Attached: Yes
8. Description of Facilities Installed and Owned by Each Party:
Cooperative owns all equipment at this substation except for the following, which is owned by Company:
 - Company SCADA monitoring and operating equipment
 - Company's 138kV lines to Wesmer and La Palma connected to Cooperative's deadend structure in the station.
9. Operational Responsibilities of Each Party:
Company operates MOS 388, MOS 387 and Circuit Switcher 383.
Cooperative operates all remaining equipment at this station.
10. Maintenance Responsibilities of Each Party:
Each Party is responsible for the maintenance of its own equipment.
Cooperative will maintain the site including vegetation control.
11. Other Terms and Conditions:
Company has access to the station with a lock in the entrance gate and access to the control house.



FACILITY SCHEDULE NO. 42

1. Name: **Rio Hondo**
2. Facility Location: Company's Rio Hondo Switching Station west of Searcy Road and north of Rio Hondo, Cameron County
3. Voltage at Point of Interconnection: 138kV
4. Metered Voltage: 138kV, line monitoring meter
5. Loss Adjustment Due To Meter Location: No
6. Normal Operation of Interconnection: Closed
7. One-Line Diagram Attached: Yes
8. Description of Facilities Installed and Owned by Each Party:
Company owns all equipment at this substation except for the following, which is owned by Cooperative:
 - Cooperative SCADA monitoring equipment
 - Fiber and radio communications equipment
 - Cooperative's 138 kV lines to Burns and East Rio Hondo connecting to Company's deadend structures in the station
9. Operational Responsibilities of Each Party:
Company operates all equipment at this station.
10. Maintenance Responsibilities of Each Party:
Each Party is responsible for the maintenance of its own equipment.
Company will maintain the site including vegetation control.
11. Other Terms and Conditions:
Cooperative has access to the station with a lock in the entrance gate(s) and access to the control house.



FACILITY SCHEDULE NO. 43

1. Name: **Weslaco Switching Station**
2. Facility Location: Company's Weslaco Switching Station near the intersection of Mile 6 West and Minnesota Roads near Weslaco, Hidalgo County
3. Voltage at Point of Interconnection: 138kV
4. Metered Voltage: 138kV, line monitoring meter
5. Normal Operation of Interconnection: Closed
6. Loss Adjustment Due To Meter Location: No
7. One-Line Diagram Attached: Yes
8. Description of Facilities Installed and Owned by Each Party:

Company installed and owns all equipment at this substation except for Cooperative's SCADA monitoring and control equipment and associated fiber and radio communications equipment.

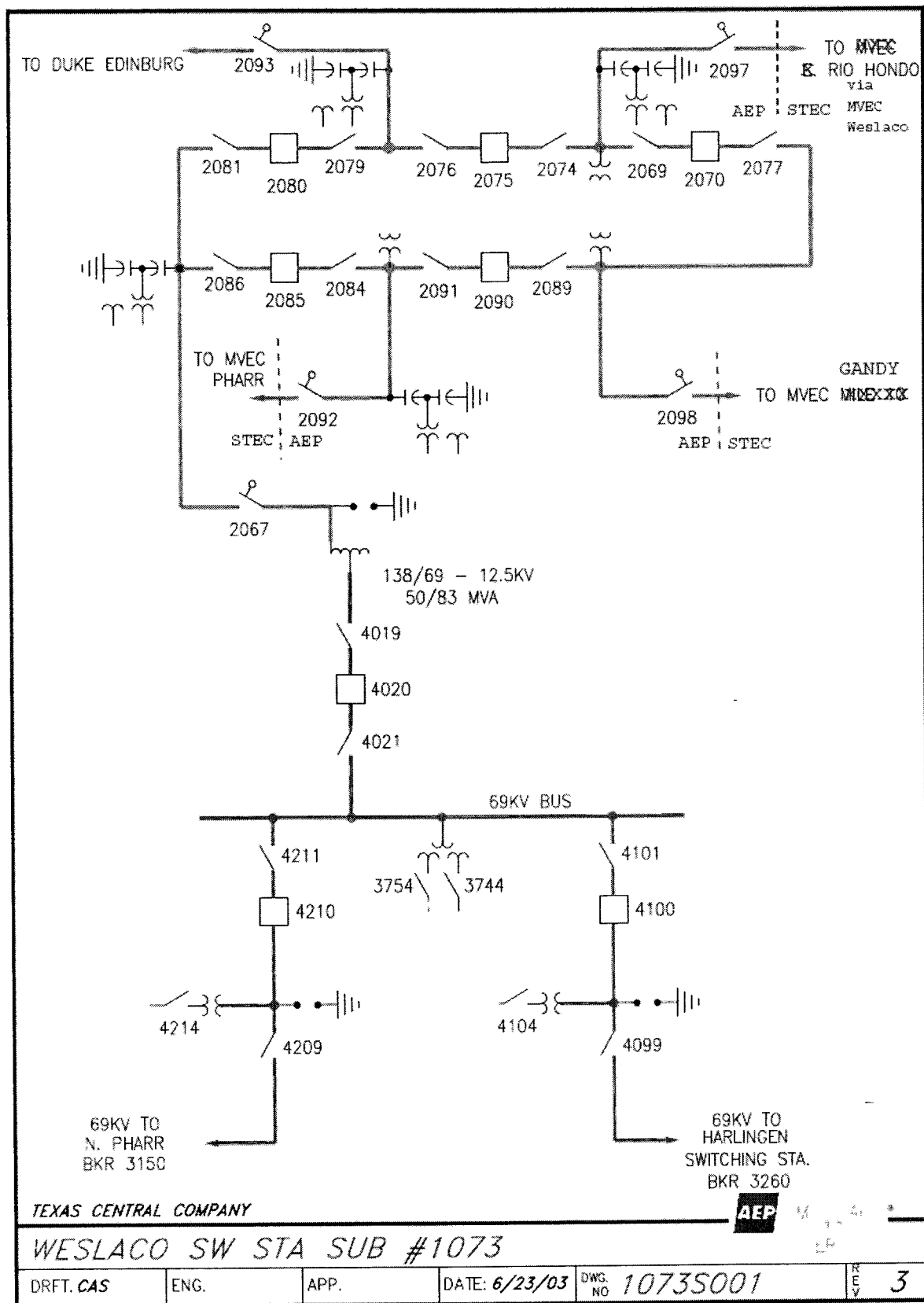
Cooperative owns the transmission lines to its Val Verde, Weslaco, and Gandy substations that connect to Company's deadend structures inside this station.
9. Operational Responsibilities of Each Party:
 - Cooperative operates Breaker 2070 and Breaker 2090.
 - Cooperative operates motor operated air switches 2092, 2097 and 2098.

Company operates all remaining equipment at this station.
10. Maintenance Responsibilities of Each Party:

Each Party is responsible for the maintenance of the equipment it owns.

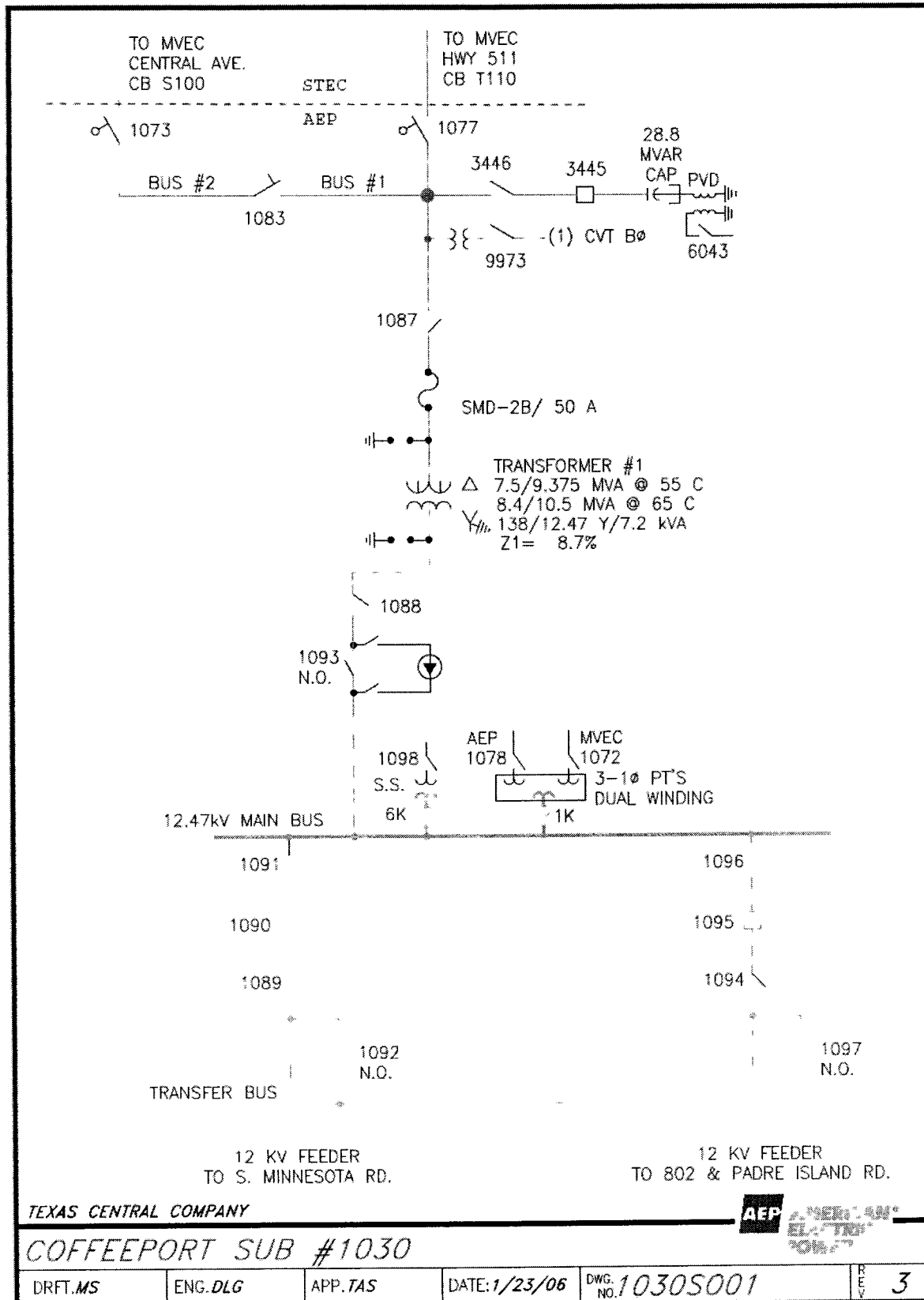
Company will maintain the site including vegetation control.
11. Other Terms and Conditions:

Cooperative has access to the station with a lock in the entrance gate(s) and access to the control house.



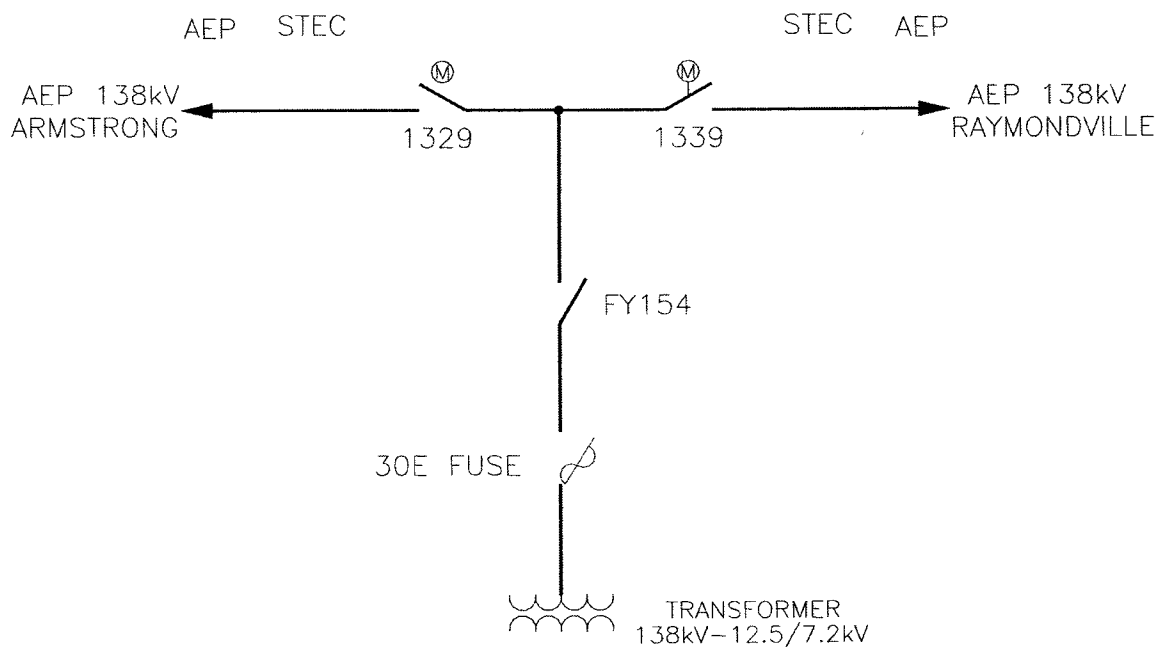
FACILITY SCHEDULE NO. 44

1. Name: **Coffee Port**
2. Facility Location: Company's Coffee Port Substation on Coffee Port Road between Hwy 802 and Hwy 48 just north of Brownsville, Cameron County
3. Voltage at Point of Interconnection: 138kV
4. Metered Voltage: 12.47kV
5. Loss Adjustment Due to Meter Location: Yes
6. Normal Operation of Interconnection: Closed
7. One-Line Diagram Attached: Yes
8. Description of Facilities Installed and Owned by Each Party:
Company owns all equipment at this substation except for the following, which is owned by Cooperative:
 - SCADA monitoring, control equipment, and associated communications equipment
 - Cooperative's 138kV transmission lines to Hwy 511 and Central Avenue that are connected to Company's deadend structure in this station
9. Operational Responsibilities of Each Party:
Both Parties may operate the capacitor bank air switch 6043 (AEP's 3446) which has dual lock capability.
Cooperative operates MOAS 1073, MOAS 1077, and Switch 1083.
Company operates all remaining equipment at this station.
10. Maintenance Responsibilities of Each Party:
Each Party is responsible for the maintenance of its own equipment.
Company will maintain the site including vegetation control.
11. Other Terms and Conditions:
Cooperative has access to the station with a lock in the entrance gate(s) and access to the control house.



FACILITY SCHEDULE NO. 45

1. Name: **F. Yturria**
2. Facility Location: Cooperative F. Yturria Substation at 113 CR 4132,
Raymondville, Kenedy County approx. 11 miles north of Raymondville on Highway 77
3. Voltage at Point of Interconnection: 138kV
4. Metered Voltage: 12.47kV
5. Loss Adjustment Due To Meter Location: Yes
6. Normal Operation of Interconnection: Closed
7. One-Line Diagram Attached: Yes
8. Description of Facilities Installed and Owned by Each Party:
Cooperative owns all equipment at this substation except for the following, which is owned by Company:
 - Radio communication equipment to communicate with Cooperative SCADA RTU
 - Company's 138kV transmission lines to Armstrong and Raymondville No. 2 connected to Cooperative's deadend structure in the station
9. Operational Responsibilities of Each Party:
Company operates Switch 1329 and Switch 1339.
Cooperative operates all remaining equipment at this station.
10. Maintenance Responsibilities of Each Party:
Each Party is responsible for the maintenance of its own equipment.
Cooperative will maintain the site including vegetation control.
11. Other Terms and Conditions:
Company has access to the station with a lock in the entrance gate(s) and access to the control house.



SOUTH TEXAS ELECTRIC COOPERATIVE, INC.				DWG. NO. FY-IA	
P O BOX 119		NURSERY, TEXAS 77976		FACILITY SCHEDULE 45	
F. YTURRIA SUBSTATION KENEDY COUNTY					
F. YTURRIA TIE					
DWN BY JT	CKD BY	APPD BY	SCALE NA	DATE 6/08	

FACILITY SCHEDULE NO. 46

1. Name: **Aderhold**
2. Facility Location: Cooperative's Aderhold Substation at 7318 East Mile 17 North, Edinburg, Hidalgo County near the intersection of Monte Cristo Road and Sharp Road near San Carlos.
3. Delivery Voltage: 138kV
4. Metered Voltage: 12.47kV
5. Loss Adjustment Due To Meter Location: Yes
6. Normal Operation of Interconnection: Closed
7. One-Line Diagram Attached: No
8. Description of Facilities Installed and Owned by Each Party:

Cooperative owns the 1.6 mile hairpin 138kV double circuit transmission line including the dead end structures in Company's North Edinburg – Elsa 138kV line to Cooperative's Aderhold Substation. Cooperative owns all equipment in the Aderhold Substation except for Company's radio equipment including antenna pole for communications with Cooperative's RTU.

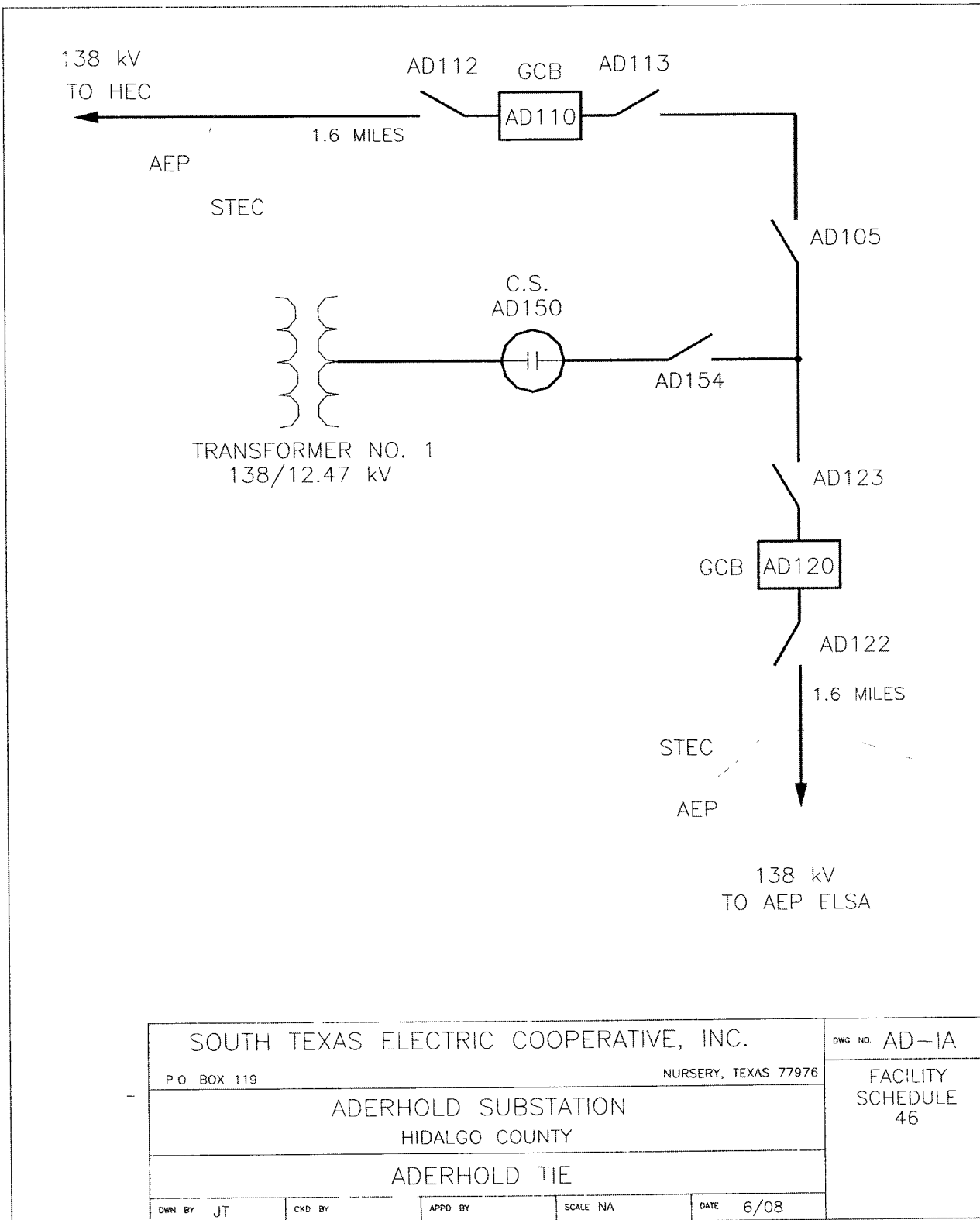
Company owns the 138kV transmission lines between Cooperative's deadend structure and the North Edinburg and Elsa Substations.

Each Party will provide their own SCADA communication circuit from the Aderhold Substation to their respective control centers.
9. Operational Responsibilities of Each Party:

Each Party operates the facilities it owns with the exception that Company also operates 138kV breakers AD110 and AD120.
10. Maintenance Responsibilities of Each Party:

Each Party maintains the facilities it owns with the exception that Company maintains the relays that protect the North Edinburg/HEC – Aderhold 138 kV transmission line and the Aderhold – Elsa 138 kV transmission line.
11. Other Terms and Conditions:

Company has access to the station with a lock in the entrance gate(s) and access to the control house.



FACILITY SCHEDULE NO. 47

1. Name: **Greta Tie Line**
2. Facility Location: Near Quintana Road and Hwy 59 intersection approx 11 miles northeast of Refugio, Texas
3. Delivery Voltage: 12.47 kV
4. Metering Voltage: 12.47 kV
5. Loss Adjustment Due To Meter Location: Yes
6. Normal Operation of Interconnection : Closed
7. One-Line Diagram Attached: Not Applicable
8. Description of Facilities to be Installed and Owned by Each Party:

Company originally installed all metering and isolation equipment including the pole at this distribution line metering point. Company owns the pole and the Company feeder conductors, crossarm, hardware, and the connections to the top of the isolation device.

Cooperative owns all equipment mounted on the pole associated with metering and switching the tie point. Victoria Electric Cooperative owns the distribution equipment on the load side of this metering point.
9. Operational Responsibilities of Each Party:

Company will operate those facilities it owns including the distribution line serving the tie point.

Cooperative will operate the facilities it owns.

Any switching shall be performed using good utility practice after informing the other party.
10. Maintenance Responsibilities of Each Party:

Maintenance is the responsibility of the equipment owner.
11. Other Terms and Conditions:

Company calculates the loss factor based upon resistances between this meter point and the ERCOT system.

FACILITY SCHEDULE NO. 48

1. Name: **Capehart Tie Line**
2. Facility Location: Near S. Emily Drive and US 181 intersection on outskirts of Beeville, Texas
3. Delivery Voltage: 12.47 kV
4. Metering Voltage: 12.47 kV
5. Loss Adjustment Due To Meter Location: Yes
6. Normal Operation of Interconnection : Closed
7. One-Line Diagram Attached: Not Applicable
8. Description of Facilities to be Installed and Owned by Each Party:

Company originally installed all metering and isolation equipment including the pole at this distribution line metering point. Company owns the pole and the Company supply feeder conductors, crossarm, hardware, and the connections to the top of the isolation device.

Cooperative owns all equipment mounted on the pole associated with metering and switching the tie point. San Patricio Electric Cooperative owns the distribution equipment on the load side of this metering point.
9. Operational Responsibilities of Each Party:

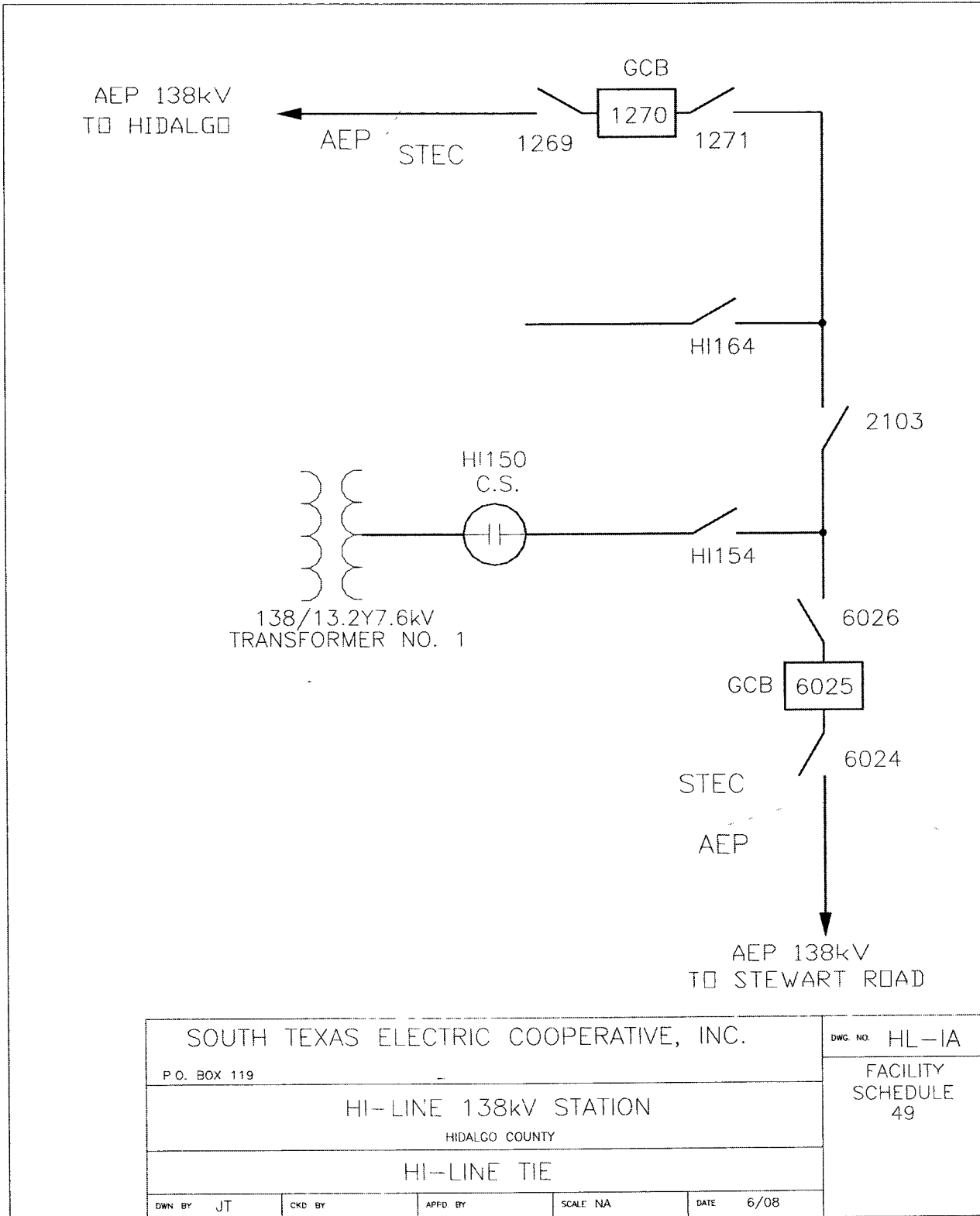
The parties shall operate the facilities they own but shall keep each other informed of switching and outage operations.
10. Maintenance Responsibilities of Each Party:

Maintenance is the responsibility of the equipment owner.
11. Other Terms and Conditions:

Company calculates the loss factor based upon resistances between this meter point and the ERCOT system.

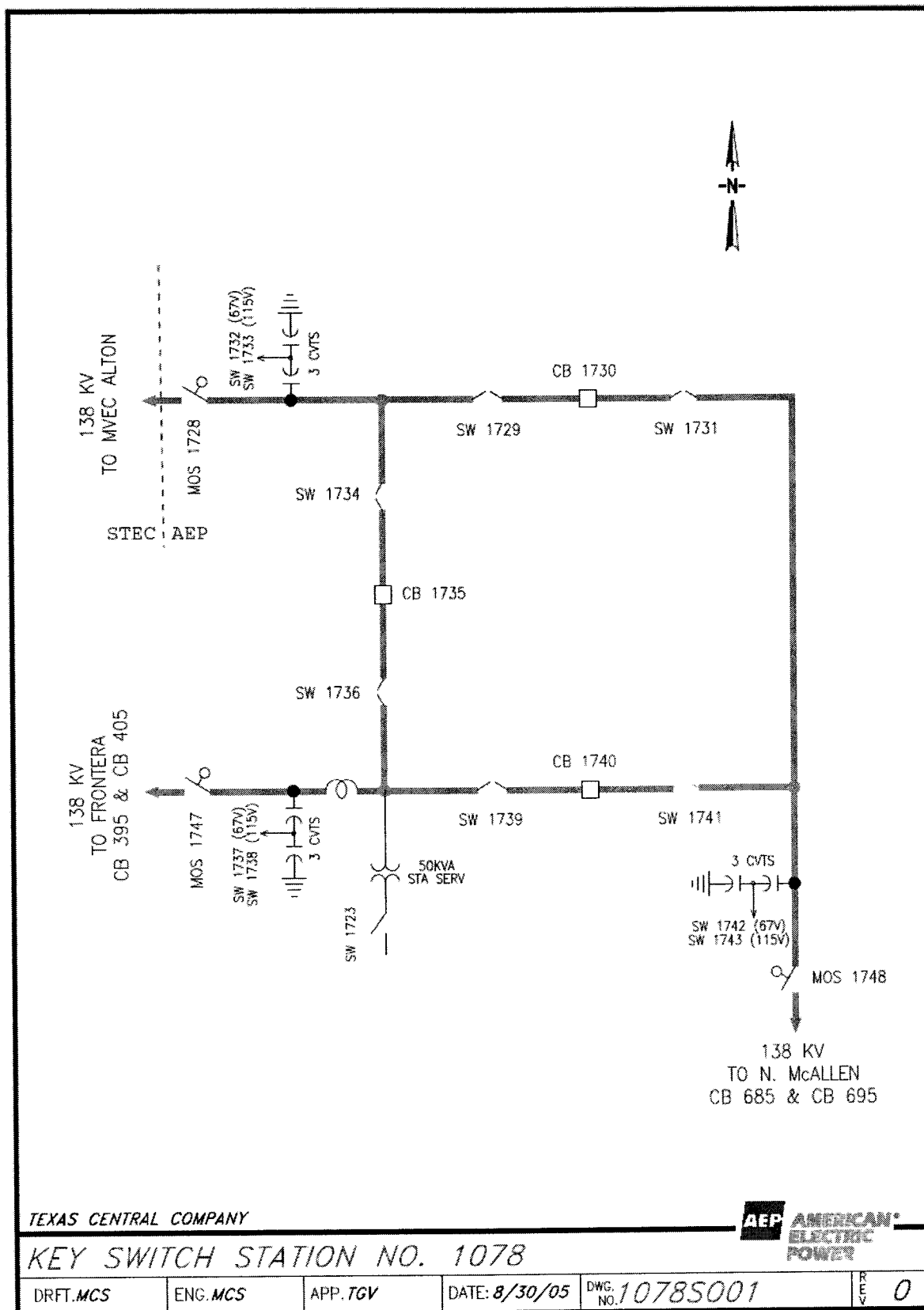
FACILITY SCHEDULE NO. 49

1. Name: **Hi-Line**
2. Facility Location: Cooperative Hi-Line Substation at 1121 W. Highline Road,
Pharr, Hidalgo County
3. Delivery Voltage: 138 kV
4. Metered Voltage: 12.47 kV
5. Loss Adjustment Due To Meter Location: Yes
6. Normal Operation of Interconnection: Closed
7. One-Line Diagram Attached: Yes
8. Description of Facilities Installed and Owned by Each Party:
Cooperative owns all equipment in the Hi-Line Substation with the exception of the
following Company owned equipment:
 - Company's RTU and associated communications equipment
 - Company's 138kV lines to Hidalgo and Stewart Road that are connected to
Cooperative's deadend structures
9. Operational Responsibilities of Each Party:
Company operates the equipment it owns and circuit breakers 1270 and 6025.
Cooperative operates the remaining equipment it owns.
10. Maintenance Responsibilities of Each Party:
Each Party maintains the facilities it owns.
11. Other Terms and Conditions:
Company has access to the station with a lock in the entrance gate(s) and access to the
control house.



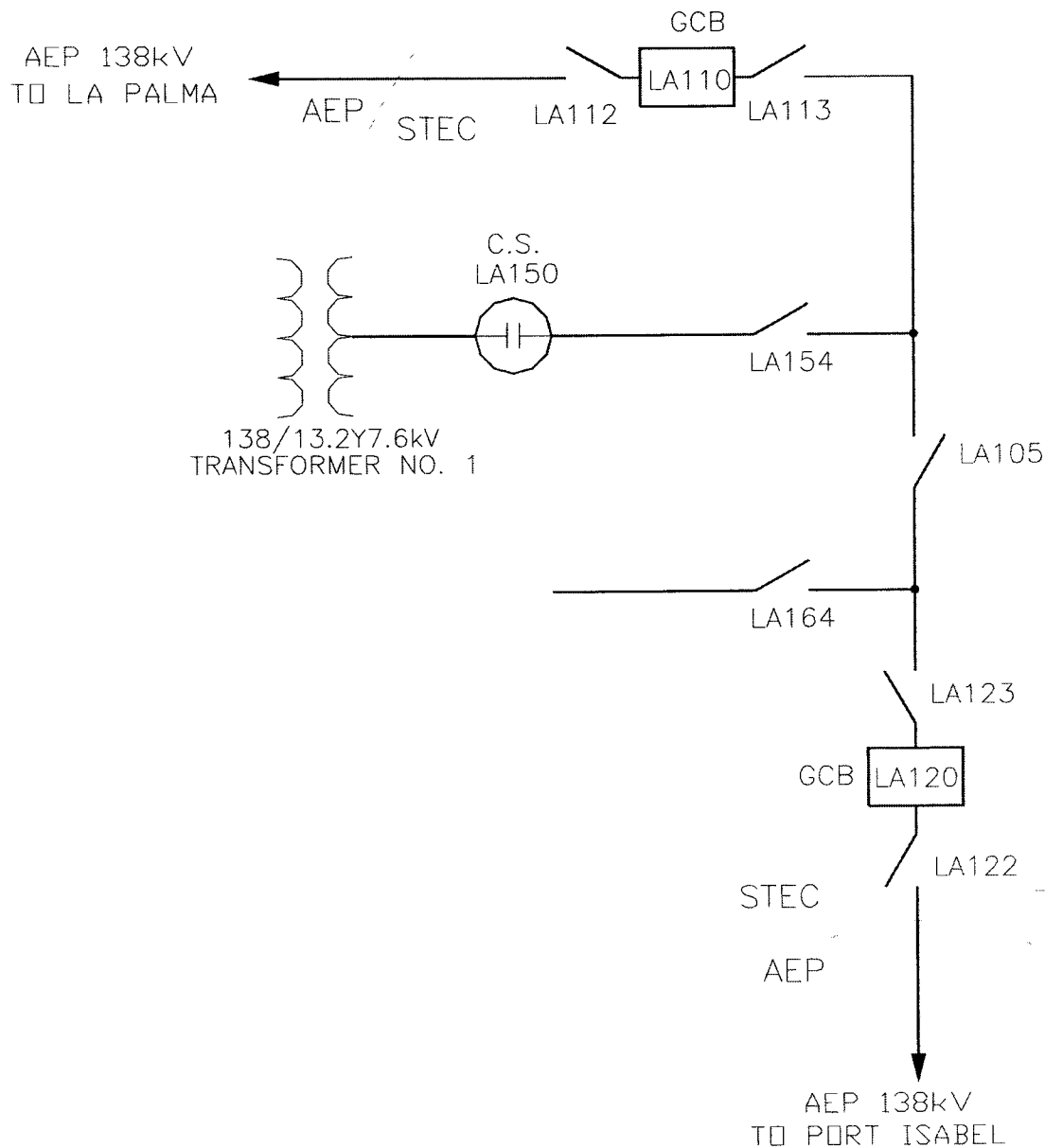
FACILITY SCHEDULE NO. 50

1. Name: **Key**
2. Facility Location: Company Key Switching Station on Mile 3 Road between Stewart and Bryan Roads approx. 5 miles northwest of McAllen in Palmhurst, Hidalgo County
3. Delivery Voltage: 138 kV
4. Metered Voltage: Not Applicable
5. Loss Adjustment Due To Meter Location: Not applicable
6. Normal Operation of Interconnection: Closed
7. One-Line Diagram Attached: Yes
8. Description of Facilities Installed and Owned by Each Party:
Company owns all equipment in its Key Switching Station with the exception of the following owned by Cooperative:
 - Cooperative 138kV line to Alton that connects to Company's deadend structure in the station
 - Cooperative RTU and associated communications equipment
9. Operational Responsibilities of Each Party:
Each Party operates the facilities it owns except that Cooperative operates circuit breakers 1730, 1735, and 1740.
10. Maintenance Responsibilities of Each Party:
Each Party maintains the facilities it owns.
11. Other Terms and Conditions:
Cooperative has access to the station with a lock in the entrance gate(s) and access to the control house.



FACILITY SCHEDULE NO. 51

1. Name: **Laureles**
2. Facility Location: Cooperative Laureles Substation at 30064 Adams Road, San Benito, Cameron County
3. Delivery Voltage: 138 kV
4. Metered Voltage: 12.47 kV
5. Loss Adjustment Due To Meter Location: Yes
6. Normal Operation of Interconnection: Closed
7. One-Line Diagram Attached: No
8. Description of Facilities Installed and Owned by Each Party:
Cooperative installed and owns all equipment in the Laureles Substation with the exception of the following:
 - Company's 138kV lines to La Palma and Port Isabel that connect to Cooperative's deadend structure in the station
 - Company's RTU and associated communications equipment
9. Operational Responsibilities of Each Party:
Each Party operates the facilities it owns except that Company operates circuit breakers LA110 and LA120.
10. Maintenance Responsibilities of Each Party:
Each Party maintains the facilities it owns.
11. Other Terms and Conditions:
Company has access to the station with a lock in the entrance gate(s) and access to the control house.



SOUTH TEXAS ELECTRIC COOPERATIVE, INC.					DWG. NO. LA-1A	
P.O. BOX 119					FACILITY SCHEDULE 51	
LAURELES SUBSTATION						
CAMERON COUNTY						
LAURELES TIE						
DWN. BY	JT	CKD. BY	APPD. BY	SCALE	NA	DATE 6/08

FACILITY SCHEDULE NO. 52

1. Name: **North Laredo**
2. Facility Location: Company's North Laredo Switching Station at 13434 IH 35,
Laredo, Webb County
3. Delivery Voltage: 138 kV
4. Metered Voltage: 24.94 kV
5. Loss Adjustment Due To Meter Location: Yes
6. Normal Operation of Interconnection: Closed
7. One-Line Diagram Attached: Yes..
8. Description of Facilities Installed and Owned by Each Party:

Company installed and owns all equipment in the North Laredo Switching Station including line breakers and associated equipment terminating Cooperative's 138kV line to its Botines Substation. Company installed and owns the jumpers from the Cooperative's tensioned conductor to the station equipment.

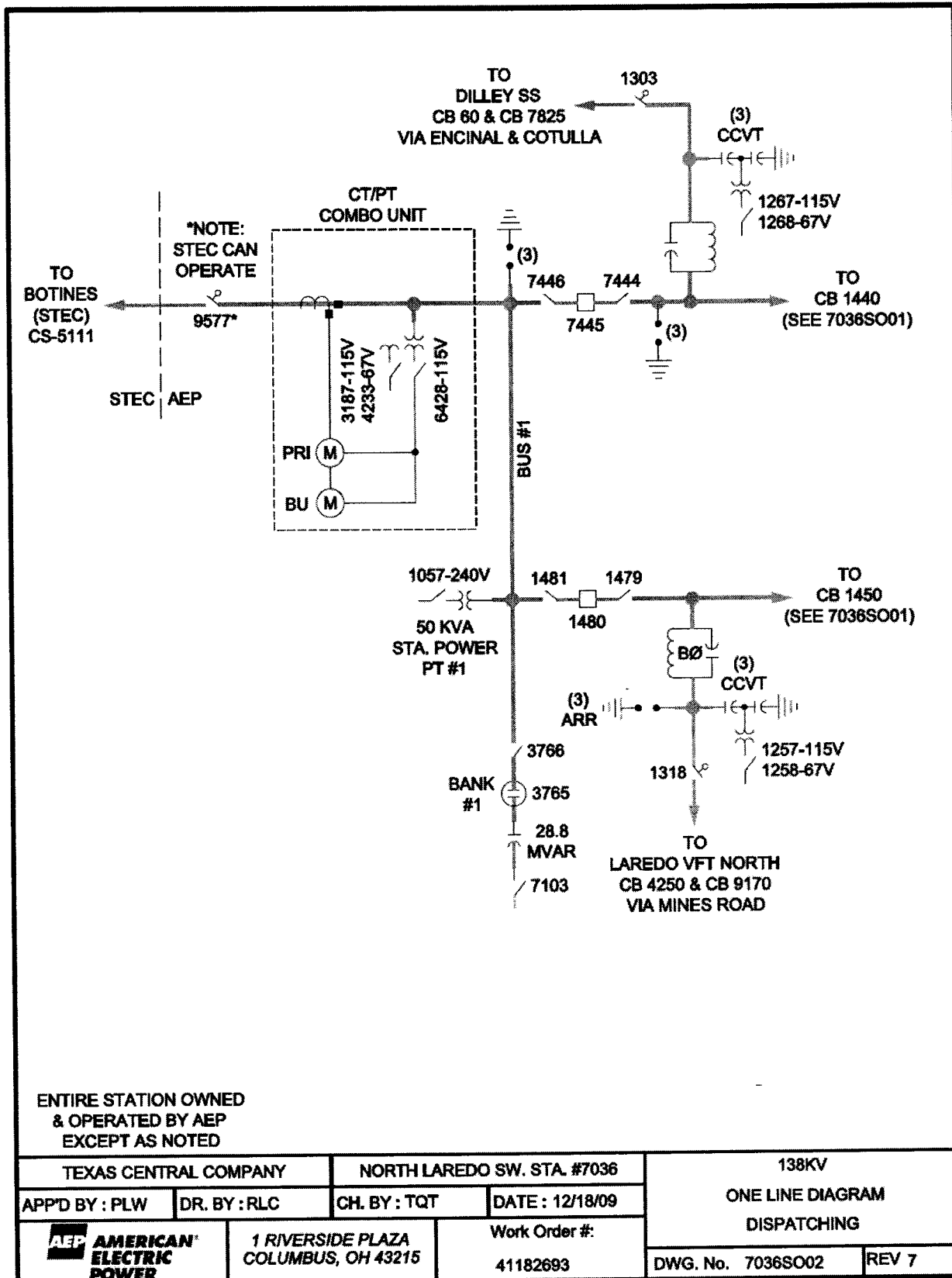
Cooperative installed and owns the 138 kV transmission line connecting Cooperative's Botines Station to the North Laredo Switching Station including the conductors to the Company's station deadend structure.
9. Operational Responsibilities of Each Party:

Company operates all equipment and facilities it owns.

Cooperative shall be allowed access to lock open and tag the air disconnect switch(es) that isolate its Botines - North Laredo 138kV transmission line.
10. Maintenance Responsibilities of Each Party:

Each Party maintains the facilities it owns.
11. Other Terms and Conditions Attached:

Company shall provide Cooperative with SCADA information from the breakers associated with this Point of Interconnection from the North Laredo Switching Station via existing communications networks.



FACILITY SCHEDULE NO. 53

1. Name: **Franklins Camp**
2. Facility Location: Cooperative Franklins Camp Substation at 5565 FM 2918, Churchill, Brazoria County
3. Delivery Voltage: not applicable
4. Metering Voltage: 138 kV
5. Loss Adjustment Due To Meter Location: not applicable
6. Normal Operation of Interconnection: not applicable
7. One-Line Diagram Attached: not applicable
8. Description of Facilities to be Installed and Owned by Each Party:

Company owns a revenue class meter along with associated wiring and isolation devices connected in parallel with Cooperative's meter on the Franklins Camp to Seaway 138kV transmission line.

Cooperative owns all other equipment at its Franklin's Camp Station.
9. Operational Responsibilities of Each Party:

Company operates those facilities it owns. All operations by Company shall be coordinated with STEC using good utility practices.

Cooperative will operate its facilities using good utility practices.
10. Maintenance Responsibilities of Each Party:

Maintenance is the responsibility of the equipment owner.
11. Other Terms and Conditions:

Company shall make this meter's data available to Cooperative upon request in an approved format usable by Cooperative. Company is also responsible for the communications path to its meter that affects remote reading except for any part of the path that utilizes Cooperatives communications network. Any work on Cooperative communications equipment solely for Company's access to its meter shall be paid by the Company.

ENCLOSURE 2

Operating Companies of the
American Electric Power System
FERC Electric Tariff, Second Revised Volume No. 6

Original Service Agreement No. 268
First Revised Sheet No. 1
superseding Original Sheet No. 1

Cancels Service Agreement No. 268

Notice of Cancellation

Issued by: Richard E. Munczinski, Senior Vice President-
Regulation and Public Policy
Issued on: March 10, 2010

Effective Date: February 19, 2010

ENCLOSURE 3

Operating Companies of the
American Electric Power System
FERC Electric Tariff, Second Revised Volume No. 6

First Revised Service Agreement No. 355
Superseding Original Service Agreement No. 355

Cancels Service Agreement No. 355

Notice of Cancellation

Issued by: Richard E. Munczinski, Senior Vice President-
Regulation and Public Policy
Issued on: March 10, 2010

Effective Date: February 19, 2010