

Control Number: 35077



Item Number: 157

Addendum StartPage: 0

**Project No. 35077**

**First Amendment to**

**INTERCONNECTION AGREEMENT**

**Between**

**City of LaGrange**

**and**

**LCRA Transmission Services Company**

RECEIVED  
09 DEC -4 PM 2:58  
PUBLIC UTILITY COMMISSION  
FILING CLERK

**November 20, 2009**

**FIRST AMENDMENT TO  
INTERCONNECTION AGREEMENT**

This First Amendment ("Amendment") is made and entered into this 20 day of November, 2009, between the City of La Grange ("City") and the LCRA Transmission Services Corporation ("Corporation") collectively referred to hereinafter as the Parties.

**WHEREAS**, the Corporation and the City entered into that certain Interconnection Agreement executed June 4, 2008 and

**WHEREAS**, the City will replace the grandfathered distribution breaker LG-30 with a City owned distribution breaker LG-30

**NOW, THEREFORE**, in consideration of the mutual promises and undertakings herein set forth, the Parties agree to amend the Agreement as follows:

1. Exhibit "A" attached to the Agreement is deleted in its entirety and the Exhibit "A" attached to this First Amendment is hereby added to the Agreement in lieu thereof.
2. Facility Schedule No. 1 (including the diagrams attached thereto) is deleted in its entirety and Facility Schedule No. 1 attached to this First Amendment is hereby added to the Agreement in lieu thereof.
3. Facility Schedule No. 1 (including the diagrams attached thereto) attached to this First Amendment will become effective upon execution of this First Amendment by the Parties.

Except as otherwise expressly provided for herein, the Agreement will continue in full force and effect in accordance with its terms.

IN WITNESS WHEREOF, the Parties have caused this First Amendment to be executed in several counterparts, each of which shall be deemed an original but all shall constitute one and the same instrument.

CITY OF LA GRANGE

By: 

Name: Shawn Raborn

Title: City Manager

Date: 11/20/09

LCRA TRANSMISSION SERVICES  
CORPORATION

By: 

Name: Ray Pfefferkorn, P.E.

Title: LCRA Transmission Engineering  
Manager

Date: 11/5/09





**FACILITY SCHEDULE NO. 1**  
**First Amendment**

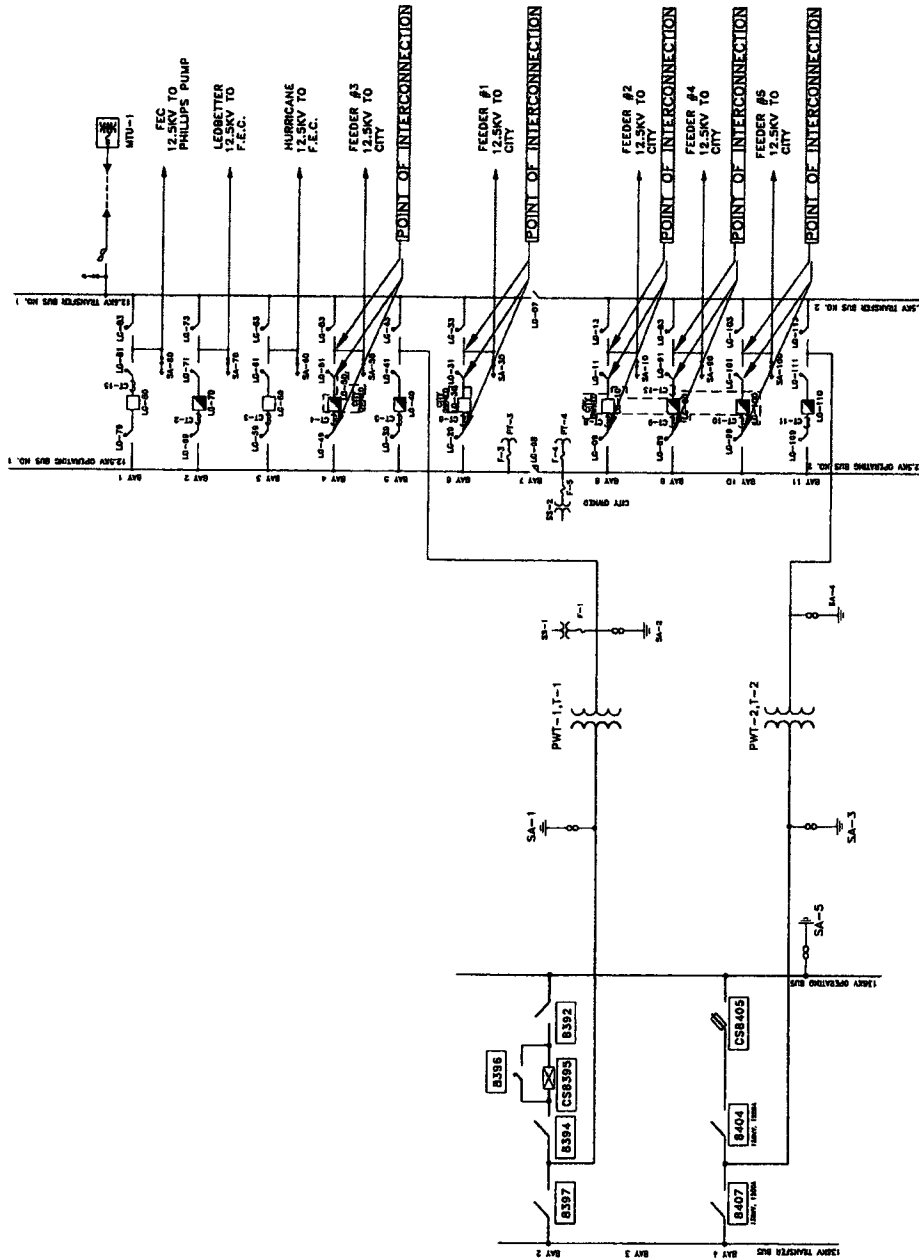
1. **Name:** La Grange Substation
2. **Facility Location:** The La Grange Substation is located at 2231 Von Minden Rd, La Grange, Fayette County, TX 78945
3. **Points of Interconnection:** There are fifteen (15) Points of Interconnection at the La Grange Substation generally described as:
  - where the incoming distribution line connects to the tubular bus between switches LG-11 and LG-13 at breaker LG-10.
  - where the jumper from breaker LG-10, passing through CT-8, connects to the 4 hole pad on switch LG-9.
  - where the jumper from breaker LG-10 connects to the 4 hole pad on switch LG-11.
  - where the incoming distribution line connects to the tubular bus between switches LG-31 and LG-33 at breaker LG-30.
  - where the jumper from breaker LG-30, passing through CT-6, connects to the 4 hole pad on switch LG-29.
  - where the jumper from breaker LG-30 connects to the 4 hole pad on switch LG-31.
  - where the incoming distribution line connects to the tubular bus between switches LG-51 and LG-53 at breaker LG-50.
  - where the jumper from breaker LG-50, passing through CT-4, connects to the 4 hole pad on switch LG-49.
  - where the jumper from breaker LG-50 connects to the 4 hole pad on switch LG-51.
  - where the incoming distribution line connects to the tubular bus between switches LG-91 and LG-93 at breaker LG-90.
  - where the jumper from breaker LG-90, passing through CT-9, connects to the 4 hole pad on switch LG-89.
  - where the jumper from breaker LG-90 connects to the 4 hole pad on switch LG-91.
  - where the incoming distribution line connects to the tubular bus between switches LG-101 and LG-103 at breaker LG-100.
  - where the jumper from breaker LG-100, passing through CT-10, connects to the 4 hole pad on switch LG-99.
  - where the jumper from breaker LG-100 connects to the 4 hole pad on switch LG-101.
4. **Transformation Services Provided by LCRA TSC:** Yes
5. **Metering Services Provided by LCRA TSC:** Yes

6. **Delivery Voltage:** 12.5 kV
7. **Metered Voltage and Location:** The metered voltage is 12.5 kV. The metering current transformers are in each distribution bay and in the total bays. The metering potential transformers are located on the 12.5 kV operating buses No. 1 and No. 2.
8. **One Line Diagram Attached:** Yes
9. **Description of Facilities Owned by Each Party:**  
 City of La Grange owns:
  - Five (5) distribution circuits including dead-end insulators that attach to the dead-end structure, conductor, and hardware
  - Five (5) distribution circuit breakers LG-10, LG-30, LG-50, LG-90, and LG-100 including foundations, jumpers and protection packages
 LCRA TSC owns:  
 The La Grange Substation including, but not limited to, the following items:
  - 138 kV operating and transfer bus including structures, insulators, foundations and jumpers
  - Two (2) power transformers PWT-1, T-1 and PWT-2, T-2 with associated surge arresters
  - Five (5) 138 kV switches 8392, 8394, 8397, 8404 and 8407
  - Two (2) circuit switchers CS-8395 with bypass switch 8396 and CS-8405
  - Thirteen (13) distribution and total bays including A-frames (13), trusses, insulators, disconnect switches, surge arresters, 12.5 kV operating and transfer bus, bus potential transformers, and metering current transformers (bays 12 and 13 are not shown on one line dwg)
  - Two (2) operating and transfer bus switch stands and bus tie switches
  - Two (2) total circuit breakers LG-40 and LG-110 including foundations, jumpers and protective relay packages
  - Underfrequency relay panel
  - Two (2) station service SS-1 and SS-2
  - Control house (metal)
  - Control house (cinder block)
  - Portable battery house with battery
10. **Operational Responsibilities of Each Party:**
  - The City will be responsible for the operation of the five (5) distribution circuit breakers serving the City feeders.
  - LCRA TSC will be responsible for the operation from the low voltage total breakers through the power transformers to the high voltage equipment.
11. **Maintenance Responsibilities of Each Party:** Each Party will be fully responsible for the maintenance of the equipment it owns.

12. **Other Terms and Conditions:** The City and LCRA TSC are to share access to the substation by LCRA TSC locks in the gate and in the control house doors.

# LA GRANGE ONE-LINE DIAGRAM

## First Amendment



LA GRANGE SUBSTATION

THIS IS NOT A COMPLETE ONE-LINE DIAGRAM.  
FOR A COMPLETE ONE-LINE DIAGRAM OF THIS  
SUBSTATION, REFER TO DRAWING S149-E-0001