



Control Number: 35077



Item Number: 154

Addendum StartPage: 0

Project No. 35077

Second Amendment to

INTERCONNECTION AGREEMENT

Between

City of Lampasas

and

LCRA Transmission Services Company

November 17, 2009

RECEIVED
03 DEC -4 PM 2:59
PUBLIC UTILITY COMMISSION
FILING CLERK

**SECOND AMENDMENT TO
INTERCONNECTION AGREEMENT**

This Second Amendment ("Amendment") is made and entered into this 19th day of November, 2009, between the City of Lampasas ("City") and the LCRA Transmission Services Corporation ("LCRA TSC") collectively referred to hereinafter as the Parties.

WHEREAS, the LCRA TSC and the City entered into that certain Interconnect Agreement executed June 16, 2008, as amended by that certain Amendment No. 1, executed as of September 30, 2008 (collectively, as amended, the "Agreement"); and

WHEREAS, the City added a third distribution circuit at the Naruna Substation

NOW, THEREFORE, in consideration of the mutual promises and undertakings herein set forth, the Parties agree to amend the Agreement as follows:

1. Exhibit "A" is deleted in its entirety and the Exhibit "A" attached to this Second Amendment is hereby added to the Agreement in lieu thereof.
2. Facility Schedule No. 2 (including the diagrams attached thereto) is deleted in its entirety and Facility Schedule No. 2 attached to this Second Amendment is hereby added to the Agreement in lieu thereof.
3. Facility Schedule No. 2 (including the diagrams attached thereto) attached to this Second Amendment will become effective upon execution of this Second Amendment by the Parties.

Except as otherwise expressly provided for herein, the Agreement will continue in full force and effect in accordance with its terms.

---The remainder of this page has intentionally been left blank---

IN WITNESS WHEREOF, the Parties have caused this Second Amendment to be executed in several counterparts, each of which shall be deemed an original but all shall constitute one and the same instrument.

CITY OF LAMPASAS

LCRA TRANSMISSION SERVICES CORPORATION

By: Judith A. Hetherly

By: Ray Pfefferkorn

Name: Judith A. Hetherly

Name: Ray Pfefferkorn, P.E.

Title: Mayor

Title: LCRA Transmission Engineering Manager

Date: 11/18/2009

Date: 11/5/09



FACILITY SCHEDULE NO. 2
Second Amendment

1. **Name:** Naruna Substation
2. **Facility Location:** The Naruna Substation is located at 1409 S. Howe, Lampasas, Lampasas County, Texas 76550.
3. **Points of Interconnection:** There are Nine (9) Points of Interconnection at the Naruna Substation generally described as:
 - where the incoming distribution line connects to the tubular bus between switches NA-11 and NA-13 at breaker NA-10.
 - where the jumper from breaker NA-10 connects to the 4 hole pad on switch NA-9.
 - where the jumper from breaker NA-10 connects to the 4 hole pad on switch NA-11.
 - where the incoming distribution line connects to the tubular bus between switches NA-21 and NA-23 at breaker NA-20.
 - where the jumper from breaker NA-20 connects to the 4 hole pad on switch NA-19.
 - where the jumper from breaker NA-20 connects to the 4 hole pad on switch NA-21.
 - where the incoming distribution line connects to the tubular bus between switches NA-41 and NA-43 at breaker NA-40.
 - where the jumper from breaker NA-40 connects to the 4 hole pad on switch NA-39.
 - where the jumper from breaker NA-40 connects to the 4 hole pad on switch NA-41.
4. **Transformation Services Provided by LCRA TSC:** Yes
5. **Metering Services Provided by LCRA TSC:** Yes
6. **Delivery Voltage:** 12.5 kV
7. **Metered Voltage and Location:** The metered voltage is 12.5 kV. The metering current transformers are located in PWT-1. The metering potential transformer is located on the 12.5 kV operating bus.
8. **One Line Diagram Attached:** Yes
9. **Description of Facilities Owned by Each Party:**

City of Lampasas owns:

 - Three (3) distribution circuits including dead-end insulators that attach to the dead-end structure, conductor, and hardware
 - Three (3) distribution circuit breakers NA-10, NA-20 and NA-40 and associated surge arresters.

LCRA TSC owns:

The Naruna Substation including, but not limited to, the following items:

- One (1) power transformers PWT-1, T-1 and associated surge arresters
- One (1) circuit switcher CS-19565
- Four (4) distribution and total bays including A-frames, trusses, insulators, disconnect switches, 12.5 kV operating and transfer bus, and bus potential transformers
- Station Service equipment
- Control house with battery

10. Operational Responsibilities of Each Party:

- The City will be responsible for the operation of the three (3) distribution circuit breakers serving the City feeders.
- LCRA TSC will be responsible for the operation from the low voltage bus through the power transformers to the high voltage equipment.

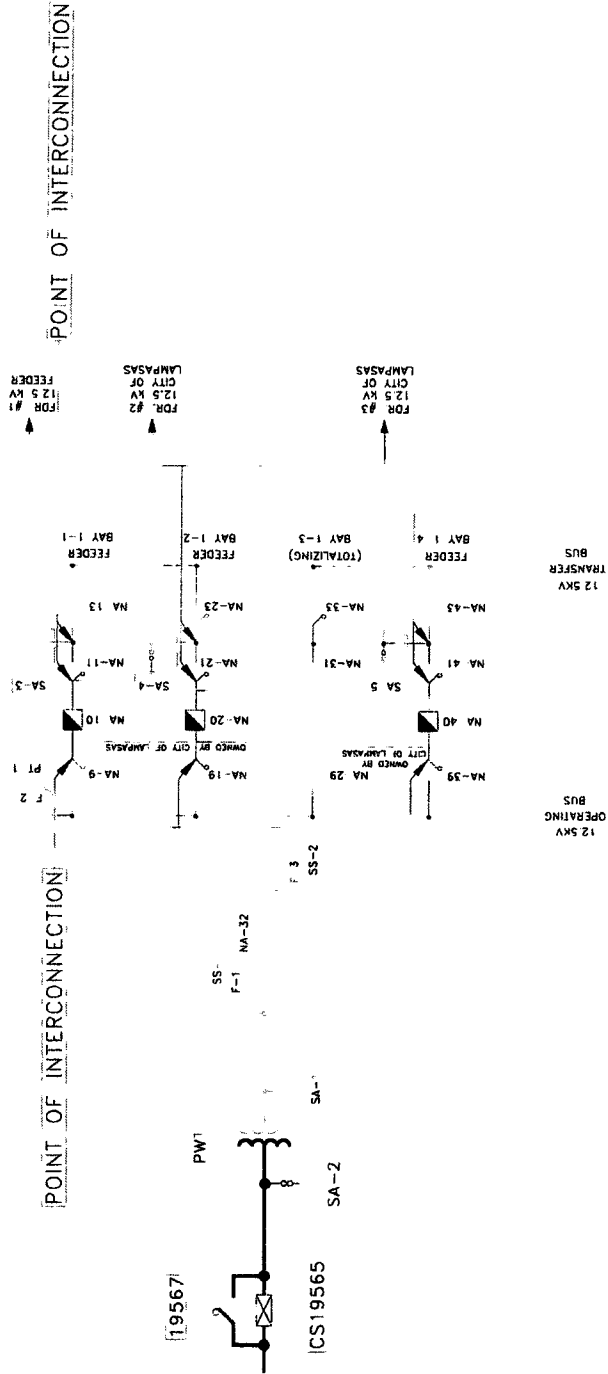
11. Maintenance Responsibilities of Each Party: Each Party will be fully responsible for the maintenance of the equipment it owns.

12. Other Terms and Conditions:

- The City and LCRA TSC are to share access to the substation by LCRA TSC locks in the gate and in the control house doors.

NARUNA ONE-LINE DIAGRAM

Second Amendment



NARUNA SUBSTATION

THIS IS NOT A COMPLETE ONE LINE DIAGRAM.
FOR A COMPLETE ONE-LINE DIAGRAM OF THIS
SUBSTATION, REFER TO DWG. S568-E-1