

Control Number: 35077



Item Number: 151

Addendum StartPage: 0

Project No. 35077

First Amendment to

INTERCONNECTION AGREEMENT

Between

City of Moulton

and

LCRA Transmission Services Company

RECEIVED
09 OCT 16 PM 4:28
PUBLIC UTILITIES COMMISSION
FILING CLERK

September 10, 2009

**FIRST AMENDMENT TO
INTERCONNECTION AGREEMENT**

This First Amendment ("Amendment") is made and entered into this 10th day of Sept., 2009, between the City of Moulton ("City") and the LCRA Transmission Services Corporation ("Corporation") collectively referred to hereinafter as the Parties.

WHEREAS, the Corporation and the City entered into that certain Interconnect Agreement dated May 28, 2009 and

WHEREAS, the City has been using one grandfathered distribution breakers and leasing one distribution recloser from the Corporation and

WHEREAS, the City will replace both of those distribution breakers with City owned breakers

WHEREAS, the Corporation will install a circuit switcher on the high side of the 138kV transformer

NOW, THEREFORE, in consideration of the mutual promises and undertakings herein set forth, the Parties agree to amend the Agreement as follows:

1. Exhibit "A" is deleted in its entirety and the Exhibit "A" attached to this First Amendment is hereby added to the Agreement in lieu thereof.
2. Facility Schedule No. 1 (including the diagrams attached thereto) is deleted in its entirety and Facility Schedule No. 1 attached to this First Amendment is hereby added to the Agreement in lieu thereof.
3. Facility Schedule No. 1 (including the diagrams attached thereto) attached to this First Amendment will become effective upon execution of this First Amendment by the Parties.

Except as otherwise expressly provided for herein, the Agreement will continue in full force and effect in accordance with its terms.

---The remainder of this page has intentionally been left blank---

IN WITNESS WHEREOF, the Parties have caused this First Amendment to be executed in several counterparts, each of which shall be deemed an original but all shall constitute one and the same instrument.

CITY OF MOULTON
CORPORATION

By: Cynthia A. McIntosh

Name: Cynthia A. MCintosh

Title: Mayor

Date: 9-11-09

LCRA TRANSMISSION SERVICES

By: Ray Pfefferkorn

Name: Ray Pfefferkorn, P.E.

Title: LCRA Transmission
Engineering Manager

Date: 10/6/09

---The remainder of this page has intentionally been left blank---



EXHIBIT A
Amendment No. 1

[illegible]

5

FACILITY SCHEDULE NO. 1
Amendment No. 1

1. **Name:** Moulton Substation
2. **Facility Location:** The Moulton Substation is located at 415 CR 260, Moulton, Lavaca County, Texas.
3. **Points of Interconnection:** There are six (6) Points of Interconnection in the Moulton Substation generally described as:
 - where the incoming distribution line connects to the tubular bus between switches MO-11 and MO-13 at breaker MO-10.
 - where the jumper from breaker MO-10 connects to the 4 hole pad on switch MO-11.
 - where the jumper from breaker MO-10 connects to the 4 hole pad on switch MO-9.
 - where the incoming distribution line connects to the tubular bus between switches MO-31 and MO-33 at breaker MO-30.
 - where the jumper from breaker MO-30 connects to the 4 hole pad on switch MO-31.
 - where the jumper from breaker MO-30 connects to the 4 hole pad on switch MO-29.
4. **Transformation Services Provided by LCRA TSC:** Yes
5. **Metering Services Provided by LCRA TSC:** Yes
6. **Delivery Voltage:** 12.5 kV
7. **Metered Voltage and Location:** The metered voltage is 12.5 kV. The metering current transformer is located in Bay #1 (regulator bay). The metering potential transformer is located on the 12.5 kV operating bus.
8. **One Line Diagram Attached:** Yes
9. **Description of Facilities Owned by Each Party:**

City of Moulton owns:

 - Two (2) distribution circuits including dead-end insulators that attach to the dead-end structures, conductor, and associated hardware
 - Two (2) distribution circuit breakers MO-10 and MO-30 and associated foundations, jumpers, relaying and cabling

LCRA TSC owns:

 - The Moulton Substation including, but not limited to, the following items:
 - One (1) power transformer PWT-1, T-1 with associated surge arresters
 - One (1) circuit switcher CS-945 with associated disconnect and bypass switches

804 and 947

- Three (3) single phase regulators REG-1
- Three (3) distribution and total bays including A-frames, trusses, insulators, disconnect switches, surge arresters, 12.5 kV operating and transfer bus, bus potential transformer, and metering current transformer
- Station Service equipment.
- Control house with station battery

10. Operational Responsibilities of Each Party:

- The City will be responsible for the operation of the two (2) distribution circuit breakers serving the City feeders.
- LCRA TSC will be responsible for the operation from the low voltage bus through the power transformer to the high voltage equipment.

11. Maintenance Responsibilities of Each Party: Each Party will be fully responsible for the maintenance of the equipment it owns.

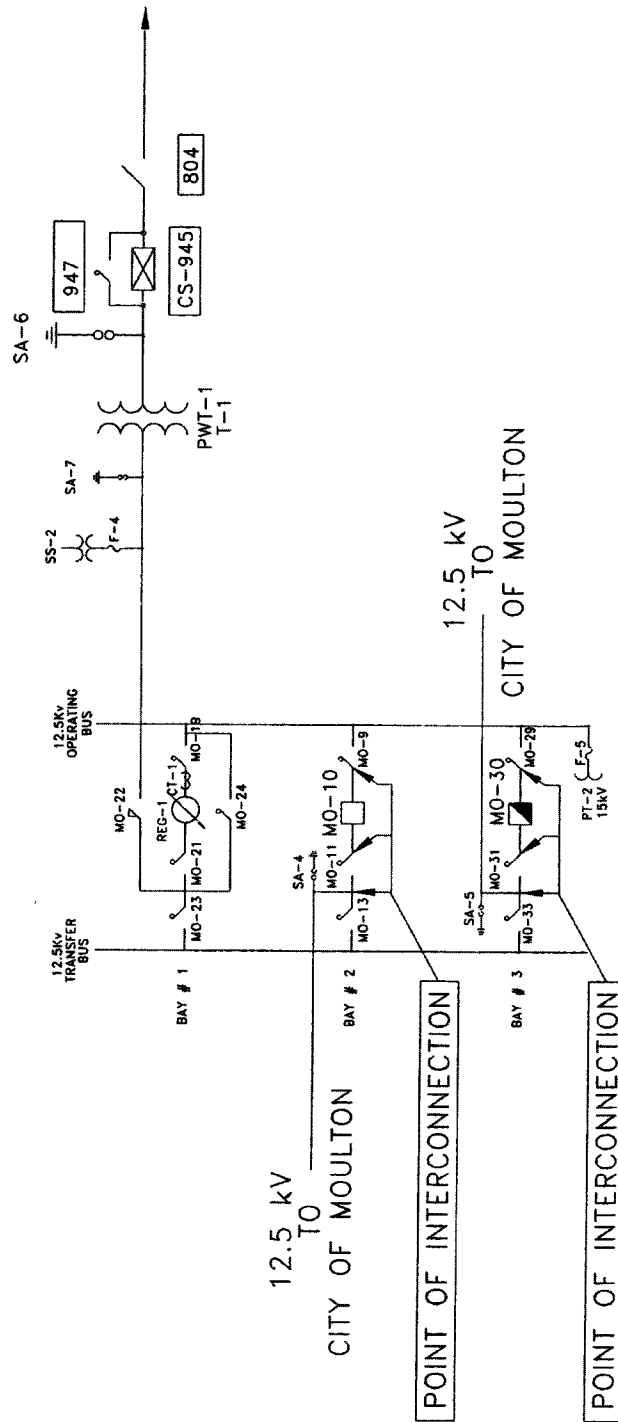
12. Other Terms and Conditions:

- The City and LCRA TSC are to share access to the substation by LCRA TSC locks in the gate and in the control house doors.

---The remainder of this page has intentionally been left blank---

MOULTON ONE-LINE DIAGRAM

Amendment No. 1



MOULTON SUBSTATION

THIS IS NOT A COMPLETE ONE-LINE DIAGRAM
FOR A COMPLETE ONE-LINE DIAGRAM OF THIS
SUBSTATION, REFER TO DWG. S166-E-1.