



Control Number: 35077



Item Number: 146

Addendum StartPage: 0

**Project No. 35077**

RECEIVED  
09 SEP - 1 PM 4:46  
PUBLIC UTILITY COMMISSION  
FILING CLERK

**First Amendment to**

**INTERCONNECTION AGREEMENT**

**Between**

**San Bernard Electric Cooperative**

**and**

**LCRA Transmission Services Corporation**

**August 4, 2009**

**FIRST AMENDMENT TO  
INTERCONNECTION AGREEMENT**

This First Amendment ("Amendment") to the Interconnection Agreement (the "Agreement"), dated February 9, 2009 between the San Bernard Electric Cooperative ("SBEC") and the LCRA Transmission Services Corporation ("LCRA TSC") is made and entered into this 4<sup>th</sup> day of August, 2009, between SBEC and LCRA TSC, collectively referred to hereinafter as the Parties. In consideration of the mutual promises and undertakings herein set forth, the Parties agree to amend the Agreement as follows:

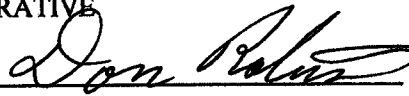
1. Exhibit "A" attached to the Agreement is deleted in its entirety and the Exhibit "A" attached to this First Amendment is hereby added to the Agreement in lieu thereof.
2. Facility Schedule No. 3 (including the diagrams attached thereto) is deleted in its entirety and Facility Schedule No. 3 attached to this First Amendment is hereby added to the Agreement in lieu thereof.
3. Facility Schedule No. 3 (including the diagrams attached thereto) attached to this First Amendment will become effective upon execution of this First Amendment by the Parties.
4. Facility Schedule No. 17 (including the diagrams attached thereto) is deleted in its entirety and Facility Schedule No. 17 attached to this First Amendment is hereby added to the Agreement in lieu thereof.
5. Facility Schedule No. 17 (including the diagrams attached thereto) attached to this First Amendment will become effective upon execution of this First Amendment by the Parties.

Except as otherwise expressly provided for herein, the Agreement will continue in full force and effect in accordance with its terms.

IN WITNESS WHEREOF, the Parties have caused this First Amendment to be executed in several counterparts, each of which shall be deemed an original but all shall constitute one and the same instrument.

SAN BERNARD ELECTRIC  
COOPERATIVE

LCRA TRANSMISSION SERVICES  
CORPORATION

By: 

By: 

Name: Don Roberts

Name: Ray Pfefferkorn, P.E.

Title: SBEC Electric Systems Manager

Title: LCRA Transmission Engineering  
Manager

Date: 8/4/09

Date: 7/28/09



**AMENDMENT NO 1  
EXHIBIT A**

<b>FACILITY SCHEDULE NO.</b>	<b>LOCATION OF POINT(S) OF INTERCONNECTION (# of Points)</b>	<b>INTERCONNECTION VOLTAGE (KV)</b>	<b>EFFECTIVE DATE OF INTERCONNECTION</b>
1	Bellville North (12)	12.5 kV	2/9/2009
2	Bellville South (3)	69 kV	2/9/2009
3	Bernardo (1)	69 kV	(Date of Amendment)
4	Colorado (7)	12.5 kV/69 kV	2/9/2009
5	Frelsburg (1)	138 kV	2/9/2009
6	Glidden (1)	69 kV	2/9/2009
7	Hallettsville City (6)	12.5 kV	2/9/2009
8	Macedonia(3)	24.9 kV/138 kV	2/9/2009
9	New Bremen (12)	12.5 kV	2/9/2009
10	Prairie View (4)	138 kV	2/9/2009
11	Quanex (2)	12.5 kV/69 kV	2/9/2009
12	Quanex Switch Structure (3)	69 kV	2/9/2009
13	Sheridan Switch Structure (3)	69 kV	2/9/2009
14	Thorstenburg Switch Structure (3)	69 kV	2/9/2009
15	Waller (5)	12.5 kV/138 kV	2/9/2009
16	Rock Island (0)		2/9/2009
17	Seaway (0)		(Date of Amendment)
18	Sheridan (0)		2/9/2009
19	Sunnyside (0)		2/9/2009
20	Thorstenburg #2 (0)		2/9/2009
21			
22			
23			
24			
25			
26			
27			
28			
29			
30			
31			
32			
33			
34			

**AMENDMENT NO 1  
FACILITY SCHEDULE NO. 3**

1. **Name:** Bernardo Substation
2. **Facility Location:** The Bernardo Substation is located at 1003 Dietrich Lane, Cat Springs, Colorado County, Texas 78933.
3. **Points of Interconnection:** There is one (1) Point of Interconnection in the Bernardo Substation generally described as:
  - where the jumper from Fuse F-1 attaches to the tubular bus running between switch 1766 and switch 1767.
4. **Transformation Services Provided by LCRA TSC:** Yes
5. **Metering Services Provided by LCRA TSC:** Yes
6. **Delivery Voltage:** 69 kV
7. **Metered Voltage and Location:** The metering voltage is 12.5 kV. The metering current transformer is located in the total bay. The bus potential transformer is located on the 12.5 kV operating bus.
8. **One Line Diagram Attached:** Yes
9. **Description of Facilities Owned by Each Party:**

SBEC owns:

The Bernardo Substation including, but not limited to, the following items:

- One (1) fuse F-1
- One (1) power transformer PWT-1 T-1 with associated surge arresters
- All distribution circuits including dead end insulators that attach to the dead end structure, conductors, and hardware
- All distribution circuit breakers including jumpers, protective relay packages and foundations
- All distribution and total bays including A-frames, trusses, insulators, disconnect switches, surge arresters, 12.5 kV operating and transfer bus, bus potential transformer and associated cabling
- Three (3) single phase regulators REG-1 with associated disconnect and bypass switches
- Underfrequency relay equipment
- Station service
- Control house (16' x 20') and battery

LCRA TSC owns:

- One (1) 138 kV in-line A-frame structure
- Three (3) 138 kV motor operated switches 1765 (with interrupter), 1766 and 1767
- One (1) metering current transformer CT-1

10. **Operational Responsibilities of Each Party:** Each Party is responsible for the operation of the equipment it owns.
11. **Maintenance Responsibilities of Each Party:** Each Party will be fully responsible for the maintenance of the equipment it owns.
12. **Other Terms and Conditions:** SBEC and LCRA TSC are to share access to the substation by LCRA TSC locks in the gate and in the control house doors.

**AMENDMENT NO 1  
FACILITY SCHEDULE NO. 17**

**Name:** Seaway Substation

- 1. Facility Location:** The Seaway Substation is located at 33956 Joseph Rd., Waller, Waller County, Texas 77484.
- 2. Points of Interconnection:** There are no Points of Interconnection in the Seaway Substation.
- 3. Transformation Services Provided by LCRA TSC:** Yes
- 4. Metering Services Provided by LCRA TSC:** Yes
- 5. Delivery Voltage:** N/A
- 6. Metered Voltage and Location:** The metering voltage is 4.18 kV and 24.9 kV. The metering current transformers are located in the Arco Pump distribution feeder; in the PWT-3, T-3 24.9 kV transformer bus; inside PWT-4, T-4 and in the PWT-1, T-2 24.9 kV transformer bus. The bus potential transformers are located on both 24.9 kV operating buses and on the Arco Pump distribution feeder.
- 7. One Line Diagram Attached:** Yes
- 8. Description of Facilities Owned by Each Party:**

SBEC owns: The Seaway Substation and all equipment and facilities except those listed as owned by LCRA TSC or Seaway Pipeline Company.

Seaway Pipeline Company owns:

  - One (1) power transformer PWT-2, T-1

LCRA TSC owns:

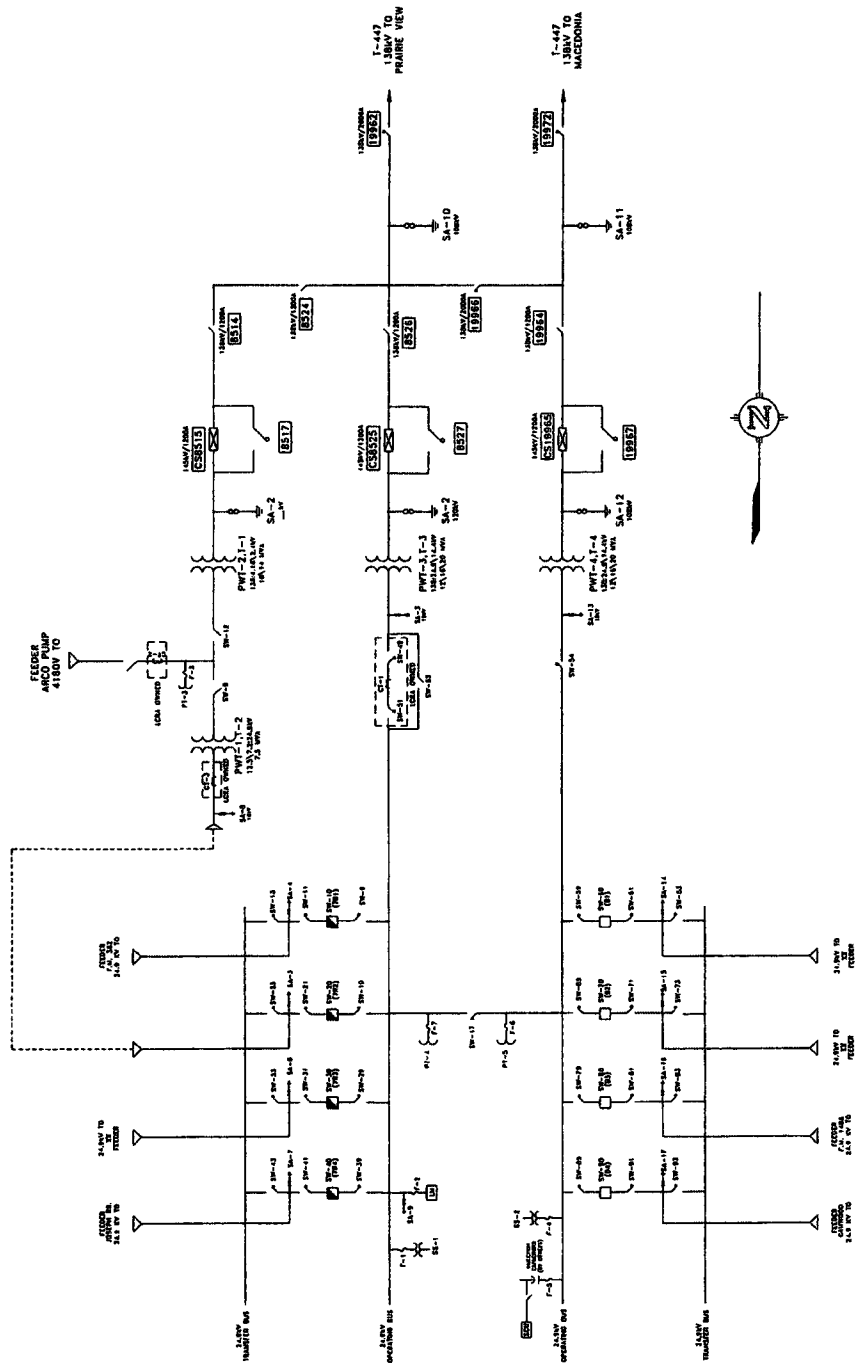
  - Three (3) metering current transformers CT-1, CT-2 and CT-3
  - Two (2) 25 kV switches SW-49 and SW-51
  - Metering equipment
- 9. Operational Responsibilities of Each Party:** Each Party is responsible for the operation of the equipment it owns.
- 10. Maintenance Responsibilities of Each Party:** Each Party will be fully responsible for the maintenance of the equipment it owns.

**11. Other Terms and Conditions:**

- SBEC and LCRA TSC are to share access to the substation by LCRA TSC locks in the gate and in the control house doors.
- The Seaway Pipeline Company (sometimes identified as TEPPCO) transformer PWT-2, T-1 is not, and will not be, included in the Transformation Service Agreement unless it is leased or purchased by LCRA TSC at some point in the future.



# SEAWAY ONE-LINE DIAGRAM



SEAWAY SUBSTATION  
 THIS IS NOT A COMPLETE ONE-LINE DIAGRAM  
 FOR A COMPLETE ONE-LINE DIAGRAM OF THIS  
 SUBSTATION, REFER TO DRAWING S28A-E-0452

8.