



Filing Receipt

Received - 2022-08-10 02:52:23 PM
Control Number - 35077
ItemNumber - 1457

Project No. 35077

INTERCONNECTION AGREEMENT

Between

Wind Energy Transmission Texas, LLC

and

Oncor Electric Delivery Company LLC

May 21, 2012

INTERCONNECTION AGREEMENT
BETWEEN
WIND ENERGY TRANSMISSION TEXAS, LLC
AND
ONCOR ELECTRIC DELIVERY COMPANY LLC

DATED: 5-21-2012

**INTERCONNECTION AGREEMENT
BETWEEN
WIND ENERGY TRANSMISSION TEXAS, LLC
AND
ONCOR ELECTRIC DELIVERY COMPANY LLC**

This Agreement is made and entered into this 21st day of May, 2012, by and between Wind Energy Transmission Texas, LLC ("WETT") and Oncor Electric Delivery Company LLC ("Oncor") each sometimes hereinafter referred to individually as "Party" or both referred to collectively as "Parties".

WITNESSETH

WHEREAS, each Party is the owner and operator of electric transmission facilities and is engaged in the business of transmitting electric energy within the Electric Reliability Council of Texas region; and

WHEREAS, the Parties desire to interconnect their respective electric systems in the respects and under the terms and conditions set forth below.

NOW, THEREFORE, in consideration of the premises and of the mutual covenants and conditions herein set forth, the Parties agree as follows:

ARTICLE I – EFFECTIVE DATE AND TERM

This Agreement shall become effective on the date first set forth above and shall continue in effect thereafter until all Facility Schedules in this Agreement have been terminated, or this Agreement in its entirety has been terminated, each in accordance with the terms of this Agreement.

ARTICLE II – OBJECTIVE AND SCOPE

2.1 It is the intent of the Parties, by this Agreement, to state the terms and conditions under which the Parties' electric systems will be interconnected and to identify the facilities and equipment provided by each Party at the Points of Interconnection.

2.2 This Agreement shall apply to the ownership, design, construction, control, operation, and maintenance of those facilities that are specifically identified and described in the Facility Schedules.

ARTICLE III – DEFINITIONS

For purposes of this Agreement, the following definitions shall apply:

3.1 Agreement shall mean this Agreement with all schedules and attachments hereto, and any schedules and attachments hereafter added by amendment to this Agreement.

3.2 ANSI Standards shall mean the American National Standards Institute Standards in effect at the time a new Point of Interconnection is constructed.

3.3 ERCOT shall mean the Electric Reliability Council of Texas, Inc., or its successor in function.

3.4 ERCOT Requirements shall mean the ERCOT Operating Guides, ERCOT Protocols, as well as any other binding documents adopted by ERCOT relating to the interconnection and operation of electric systems in ERCOT, including any amendments of those Guides, Protocols, and binding documents that are adopted by ERCOT from time to time, and any successors thereto.

3.5 Facility Schedule(s) shall mean the addendum(s) attached to and made a part of this Agreement that describe the responsibilities of the Parties at, or in association with, the Point(s) of Interconnection, including, but not limited to, with respect to ownership, design, construction, control, operation, and maintenance.

3.6 Good Utility Practice shall have the meaning ascribed thereto in PUCT Rule 25.5(56) or its successor.

3.7 IEEE Standards shall mean the Institute of Electrical and Electronic Engineers Standards in effect at the time a new Point of Interconnection is constructed.

3.8 NERC shall mean the North American Electric Reliability Corporation or its successor in function.

3.9 NERC Reliability Standards shall mean the electric reliability standards enforced by NERC and applicable to the Parties to this Agreement.

3.10 NESC shall mean the National Electrical Safety Code in effect at the time a new Point of Interconnection is constructed.

3.11 Person shall mean any individual, partnership, firm, corporation, limited liability company, association, trust, unincorporated organization or other entity.

3.12 Point(s) of Interconnection shall mean the points of interconnection specified in Exhibit A and described in the Facility Schedule(s) where the electrical systems of the Parties are connected or may, by the closure of normally open switches, be connected, such that electric power may flow in either direction.

3.13 PUCT shall mean the Public Utility Commission of Texas or its successor in function.

ARTICLE IV – ESTABLISHMENT, MODIFICATION, AND TERMINATION OF POINTS OF INTERCONNECTION

4.1 The Parties agree to interconnect their facilities at each Point of Interconnection in accordance with the terms and conditions of this Agreement.

4.2 The Parties agree to cause their facilities being newly constructed after the effective date of this Agreement, in conjunction with the establishment of a new Point of Interconnection, to be designed and constructed in accordance with (a) Good Utility Practice, (b) applicable laws and regulations, (c) the applicable provisions of the NERC Reliability Standards and ERCOT Requirements, and (d) the applicable provisions of the following standards in effect at the time of construction of this Point of Interconnection: NESC, ANSI Standards, and IEEE Standards.

4.3 With respect to Points of Interconnection newly constructed after the effective date of this Agreement, each Party will design its system protection facilities to isolate any fault occurring on its system that would negatively affect the other Party's system at such Point of Interconnection in accordance with applicable ERCOT Requirements and NERC Reliability Standards. The protection schemes used by the Parties at that Point of Interconnection will be determined by both Parties in a cooperative effort to achieve system coordination. Prior to commissioning that Point of Interconnection, both Parties will perform a complete calibration test and functional trip test of their respective system protection equipment including communication circuits between facilities.

4.4 A Point of Interconnection may be added to or deleted from this Agreement or have its normal status changed (closed or open) as mutually agreed by the Parties, in accordance with applicable laws and regulations, or as ordered by a regulatory authority having jurisdiction thereof. Prior to such addition, deletion, or status change of a Point of Interconnection, the Parties shall engage in coordinated joint planning studies to evaluate the impact of such addition, deletion, or status change and identify any mitigation measures (including but not limited to new or upgraded facilities) that might be needed in conjunction therewith. Such Point of Interconnection will not be connected, disconnected, or the normal status changed until the evaluation process described in the preceding sentence has been completed, all required mitigating measures have been implemented, any required regulatory approval has been obtained, and the appropriate Facility Schedule has been added, terminated, or amended, as the case may be. In the event a Point of Interconnection is deleted from this Agreement in accordance with this paragraph, each Party shall disconnect its facilities at such Point of Interconnection. Further, each Party will discontinue use of the facilities of the other Party associated with such Point of Interconnection, except to the extent mutually agreed by the Parties.

ARTICLE V - SYSTEM OPERATION AND MAINTENANCE

5.1 The Parties agree to cause their facilities at each Point of Interconnection, and their other facilities having, or which may reasonably be expected to have, an impact upon the facilities of the other Party to be operated and maintained in accordance with Good Utility Practice, applicable laws and regulations, and the applicable provisions of the ERCOT Requirements and NERC Reliability Standards.

5.2 If either Party proposes to make equipment changes or additions to (a) its equipment at a Point of Interconnection (including its system protection equipment) or (b) its system protection equipment at any other location that may affect the operation or performance of the other Party's facilities at a Point of Interconnection ("Changes"), such Party agrees to notify the other Party, in writing, in advance of making such proposed Changes, and the Parties will coordinate and cooperate on the assessment of the impact of such Changes on the electric systems of the Parties and the identification of any required mitigation measures (including but not limited to new or upgraded facilities). Those Changes will not be made until the required aforementioned mitigation measures have been implemented. The Parties will communicate with each other with respect to other equipment changes or additions in accordance with the ERCOT Requirements and NERC Reliability Standards.

5.3 A Party may interrupt service at a Point of Interconnection in accordance with applicable laws, regulations, and ERCOT Requirements.

5.4 Each Party will establish and maintain a control center that shall be staffed 24 hours per day, 7 days per week, with personnel capable of making operating decisions and possessing the ability to effect control of its transmission facilities at each Point of Interconnection (or make appropriate arrangements for a third party to establish and maintain such a control center on its behalf). For purposes of voice communications between the Parties' transmission control centers, phone numbers will be exchanged and

each Party will be notified of changes.

5.5 Neither Party will take any action that would cause the other Party that is not a "public utility" under the Federal Power Act to become a "public utility" under the Federal Power Act or become subject to the plenary jurisdiction of the Federal Energy Regulatory Commission.

ARTICLE VI – INDEMNIFICATION

6.1 Notwithstanding the provisions of Article X but subject to Section 12.2, each Party (the "Indemnifying Party") shall assume all liability for, and shall indemnify the other Party (the "Indemnified Party") for, any losses resulting from negligence or other fault in the design, construction, or operation of their respective facilities. Losses shall include costs and expenses of defending an action or claim made by a third Person, payments for damages related to the death or injury of any individual, damage to the property of the Indemnified Party, and payments by the Indemnified Party for damages to the property of a third Person, and damages payable by the Indemnified Party for the disruption of the business of a third Person. This Section 6.1 does not create a liability on the part of either Party to a retail customer or other third Person, but requires indemnification where such liability exists. The indemnification required under this Section 6.1 does not include responsibility for either Party's costs and expenses of prosecuting or defending an action or claim against the other Party or damages for the disruption of such Party's business. The limitations on liability set forth in this Section 6.1 do not apply in cases of gross negligence or intentional wrongdoing.

ARTICLE VII –NOTICES

7.1 Any notices, claims, requests, demands or other communications between the Parties hereunder, including but not limited to a notice of termination, notice of default, request for amendment, change to a Point of Interconnection, or request for a new Point of Interconnection, shall be (a) forwarded to the designees listed below for each Party, (b) deemed properly given if delivered in writing, and (c) deemed duly delivered when (i) delivered if delivered personally or by nationally recognized overnight courier service (costs prepaid), (ii) sent by facsimile or electronic mail with confirmation of transmission by the transmitting equipment (or, the first business day following such transmission if the date of transmission is not a business day), or (iii) received or rejected by the addressee, if sent by U.S. certified or registered mail, return receipt requested; in each case to the following addresses, facsimile numbers or electronic mail addresses and marked to the attention of the individual (by name or title) designated below:

If to WETT:

Wind Energy Transmission Texas, LLC
Wayne Morton, General Manager
210 Barton springs Road, Suite 150
Austin, Texas 78704
Telephone: 512-279-7393
Fax: 512-279-7398
Electronic mail: wayne.morton@windenergyoftexas.com

If to Oncor:

Oncor Electric Delivery Company LLC
Jeffrey B. Herring, Director – Transmission Services
2233B Mountain Creek Parkway
Dallas, Texas 75211
Telephone: 214-743-6812
Fax: 972-263-6710
Electronic mail: jherring@oncor.com

7.2 The above listed names, titles, and contact information of either Party may be changed upon written notification to the other Party.

ARTICLE VIII - SUCCESSORS AND ASSIGNS

8.1 Subject to the provisions of Section 8.2 below, this Agreement shall be binding upon and inure to the benefit of the permitted successors and assigns of the respective Parties.

8.2 Neither Party shall assign, directly or indirectly by operation of law or otherwise, any of its rights or obligations under this Agreement in whole or in part without the prior written consent of the other Party. Such consent shall not be unreasonably withheld, conditioned, or delayed, provided that neither Party will be required to consent to any assignment that would (a) subject it to additional federal or state regulation; (b) result in the imposition of additional costs of administration that the Party requesting consent to assignment does not agree to reimburse; or (c) in any way diminish the reliability of its system, enlarge its obligations, or otherwise create or maintain an unacceptable condition. Notwithstanding the foregoing, a Party may assign, without the consent of the other Party, its interest in this Agreement, in whole or in part, (a) to a successor to all or a substantial portion of the Party's transmission business; (b) to any transmission service provider (including an affiliate of the assigning Party) with the legal authority and operational ability to satisfy the obligations of the assigning Party under this Agreement; or (c) for collateral security purposes in connection with any financing or financial arrangements. The respective obligations of the Parties under this Agreement may not be changed, modified, amended, or enlarged, in whole or in part, by reason of any direct or indirect assignment, including pursuant to the sale, merger, or other business combination of either Party with any other Person. Any attempted assignment that violates this Section 8.2 shall be void and ineffective *ab initio*. Any assignment of this Agreement shall not relieve a Party of its obligations hereunder without the written consent of the other Party, such consent not to be unreasonably withheld, conditioned or delayed.

8.3 This Agreement is not intended to and shall not create rights of any character whatsoever in favor of any Persons other than the Parties, and the obligations herein assumed are solely for the use and benefit of the Parties.

ARTICLE IX – GOVERNING LAW AND REGULATION

9.1 This Agreement was executed in the State of Texas and must in all respects be governed by, interpreted, construed, and enforced in accordance with the laws thereof except as to matters exclusively controlled by the Constitution and statutes of the United States of America. This Agreement is subject to all valid applicable federal, state, and local laws, ordinances, rules, regulations, orders, and tariffs of, or approved by, duly constituted regulatory or other governmental authorities having jurisdiction.

9.2 This Agreement and all obligations hereunder, are expressly conditioned upon obtaining all required approvals, authorizations, or acceptances for filing by any regulatory authority whose approval, authorization or acceptance for filing is required by law. Both Parties hereby agree to support the approval of this Agreement before such regulatory authority and to provide such documents, information, and opinions as may be reasonably required or requested by either Party in the course of approval proceedings.

ARTICLE X – DEFAULT AND FORCE MAJEURE

10.1 The term “Force Majeure” as used herein shall mean any cause beyond the reasonable control of the Party claiming Force Majeure, and without the fault or negligence of such Party, which materially prevents or impairs the performance of such Party’s obligations hereunder, including but not limited to, storm, flood, lightning, earthquake, fire, explosion, failure or imminent threat of failure of facilities, civil disturbance, strike or other labor disturbance, sabotage, war, national emergency, or restraint by any federal, state, local or municipal body having jurisdiction over a Party.

10.2 Neither Party shall be considered to be in Default (as hereinafter defined) with respect to any obligation hereunder, other than the obligation to pay money when due, if prevented from fulfilling such obligation by Force Majeure. A Party unable to fulfill any obligation hereunder (other than an obligation to pay money when due) by reason of Force Majeure shall give notice and the full particulars of such Force Majeure to the other Party in writing or by telephone as soon as reasonably possible after the occurrence of the cause relied upon. Telephone notices given pursuant to this Section shall be confirmed in writing as soon as reasonably possible and shall specifically state full particulars of the Force Majeure, the time and date when the Force Majeure occurred and when the Force Majeure is reasonably expected to cease. The Party affected shall exercise due diligence to remove such disability with reasonable dispatch, but shall not be required to accede or agree to any provision not satisfactory to it in order to settle and terminate a strike or other labor disturbance.

ARTICLE XI - TERMINATION ON DEFAULT

11.1 The term “Default” shall mean the failure of either Party to perform any obligation in the time or manner provided in this Agreement. No Default shall exist where such failure to discharge an obligation is excused pursuant to Section 10.2 or is the result of an act or omission of the other Party or any of its agents. Upon discovery of a Default, the non-defaulting Party may give notice of such Default to the defaulting Party. Except as provided in Section 11.2, the defaulting Party shall have thirty (30) days from receipt of the Default notice within which to cure such Default; provided, however, if such Default is not capable of cure within thirty (30) days, the defaulting Party shall commence such cure within twenty (20) days after receipt of the Default notice and continuously and diligently exercise its efforts to complete such cure within ninety (90) days from receipt of the Default notice; and, if cured within such time, the Default specified in such notice shall cease to exist.

11.2 If a Default is not cured as provided in Section 11.1, or if a Default is not capable of being cured within the period provided for therein, the non-defaulting Party shall have the right, subject to receipt of any regulatory approvals required by applicable law, (a) to terminate, in its sole discretion, by written notice at any time until cure occurs either (i) this Agreement or (ii) any Facility Schedules as to which the Default relates and disconnect the associated Points of Interconnection, (b) to be relieved of any further obligation (i) hereunder (other than obligations associated with its own Defaults, if any, occurring prior to termination) if that Party shall have elected to terminate this Agreement or (ii) with respect to the terminated Facility Schedules and disconnected Points of Interconnection if it shall have elected to terminate any Facility Schedules as to which the Default relates and (c), whether or not that Party terminates this Agreement or any Facility Schedule, to recover from the defaulting Party all amounts due and receive all

other remedies to which it is entitled hereunder. The provisions of this Section 11.2 will survive termination of this Agreement.

11.3 The failure of a Party to insist, on any occasion, upon strict performance of this Agreement will not be considered to waive the obligations, rights, or duties imposed upon the Parties by this Agreement.

ARTICLE XII- MISCELLANEOUS PROVISIONS

12.1 Any undertaking by a Party to the other Party under this Agreement shall not constitute the dedication of the electrical system or any portion thereof of that Party to the public or to the other Party, and it is understood and agreed that any such undertaking shall cease upon the termination of this Agreement.

12.2 NOTWITHSTANDING ANYTHING HEREIN TO THE CONTRARY, IN NO EVENT SHALL EITHER PARTY BE LIABLE UNDER ANY PROVISION OF THIS AGREEMENT FOR ANY LOSSES, DAMAGES, COSTS OR EXPENSES FOR ANY SPECIAL, INDIRECT, INCIDENTAL, CONSEQUENTIAL, OR PUNITIVE DAMAGES, INCLUDING BUT NOT LIMITED TO LOSS OF PROFIT OR REVENUE, LOSS OF THE USE OF EQUIPMENT, COST OF CAPITAL, COST OF TEMPORARY EQUIPMENT OR SERVICES, WHETHER BASED IN WHOLE OR IN PART IN CONTRACT OR IN TORT, INCLUDING NEGLIGENCE, STRICT LIABILITY, OR ANY OTHER THEORY OF LIABILITY; PROVIDED, HOWEVER, THAT DAMAGES FOR WHICH A PARTY MAY BE LIABLE TO THE OTHER PARTY UNDER ANOTHER AGREEMENT (OR TO ANY THIRD PARTY) WILL NOT BE CONSIDERED TO BE SPECIAL, INDIRECT, INCIDENTAL, OR CONSEQUENTIAL DAMAGES HEREUNDER.

12.3 This Agreement is applicable only to the interconnection of the facilities of the Parties at the Points of Interconnection and does not obligate either Party to provide, or entitle either Party to receive, any service not expressly provided for herein. Each Party is responsible for making the arrangements necessary to receive any other service that either Party may desire from the other Party or any third party.

12.4 This Agreement, including all Facility Schedules, constitutes the entire agreement and understanding between the Parties with regard to the interconnection of the facilities of the Parties at the Points of Interconnection expressly provided for in this Agreement. The Parties are not bound by or liable for any statement, representation, promise, inducement, understanding, or undertaking of any kind or nature (whether written or oral) with regard to the subject matter hereof if not set forth or provided for herein. This Agreement replaces all other agreements and undertakings, oral and written, between the Parties with regard to the subject matter hereof. It is expressly acknowledged that the Parties may have other agreements covering other services not expressly provided for herein; such agreements are unaffected by this Agreement.

12.5 This Agreement shall not affect the obligations or rights of either Party with respect to other agreements (other than those specifically superseded by Section 12.4). Each Party represents to the other that there is no agreement or other obligation binding upon it, which, as such Party is presently aware, would limit the effectiveness or frustrate the purpose of this Agreement.

12.6 This Agreement may be amended only upon mutual agreement of the Parties, which amendment will not be effective until reduced in writing and executed by the Parties.

12.7 If any provision in this Agreement is finally determined to be invalid, void or unenforceable by any court having jurisdiction, such determination shall not invalidate, void or make unenforceable any other provision, agreement or covenant of this Agreement.

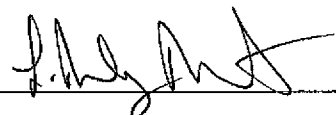
12.8 The descriptive headings of the various sections of this Agreement have been inserted for convenience of reference only and are to be afforded no significance in the interpretation or construction of this Agreement.

12.9 This Agreement will be executed in two or more counterparts, each of which is deemed an original, but all constitute one and the same instrument.

IN WITNESS WHEREOF, the Parties have caused this Agreement to be executed by the undersigned authorized representatives.

WIND ENERGY TRANSMISSION TEXAS,
LLC

ONCOR ELECTRIC DELIVERY COMPANY
LLC

By: 

By: _____

Name: Wayne Morton

Name: _____

Title: General Manager

Title: _____

Date: 5/4/12

Date: _____

12.8 The descriptive headings of the various sections of this Agreement have been inserted for convenience of reference only and are to be afforded no significance in the interpretation or construction of this Agreement.

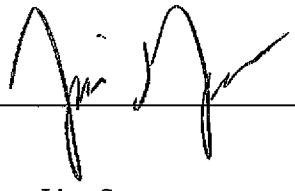
12.9 This Agreement will be executed in two or more counterparts, each of which is deemed an original, but all constitute one and the same instrument.

IN WITNESS WHEREOF, the Parties have caused this Agreement to be executed by the undersigned authorized representatives.

WIND ENERGY TRANSMISSION TEXAS,
LLC

ONCOR ELECTRIC DELIVERY COMPANY
LLC

By: _____

By:  _____

Name: _____

Name: Jim Greer

Title: _____

Title: Chief Operating Officer

Date: _____

Date: May 21, 2012

EXHIBIT A

LIST OF FACILITY SCHEDULES AND POINTS OF INTERCONNECTION

FACILITY SCHEDULE NO.	NAME OF POINT OF INTERCONNECTION	INTERCONNECTION VOLTAGE (KV)
1	Dermott	345
2	Odessa EHV	345
3	Scurry County South	345

FACILITY SCHEDULE NO. 1

1. Name: Dermott
2. Point of Interconnection location: The Points of Interconnection are located on WETT's deadend structures outside the fence at Oncor's Dermott Switching Station in Scurry County ("Switching Station"), at the point where WETT's jumpers from its transmission line conductors connect to Oncor's transmission line conductors entering the Switching Station.
3. Delivery voltage: 345 kV
4. Metering (voltage, location, losses adjustment due to metering location, and other): Not Applicable.
5. Normally closed (check one): ☒ Yes / ☐ No
6. One line diagram attached (check one): ☒ Yes / ☐ No
7. Facilities to be installed and owned by Oncor:
 - a) The Switching Station
 - b) Two deadend structures inside the Switching Station, reduced tension conductor spans from such structures to WETT's deadend structures located outside the Switching Station. The reduced tension spans shall use 1926 ACSS-TW conductors rated at 5000 Amps with a maximum operating temperature of 180° C and 7/16" EHS static wire.
 - c) 4 ea. – Circuit breakers, 345 kV, 5000 amperes, 50 kA
 - d) 8 ea. – Switch, air break, 345kV, 5500 amperes, gang operated, 3 phase
 - e) 6 ea. – CCVT's 345 kV, dual secondary windings for metering and relaying
 - f) 6 ea. – Surge arrestors, 345 kV
 - g) 1 lot – All galvanized steel structures, including deadends, switch stands, metering structures, surge arrestor supports, CCVT supports, line trap supports, static mast, and bus supports necessary for construction and operation of the switchyard facility
 - h) 1 lot – Associated buswork, conductor, connectors, grounding, conduit, control cable, foundation work, perimeter fencing, grading/dirt work and any appurtenances necessary for operation of the Switching Station
 - i) 1 lot – Control Building, including all lighting, AC power facilities, DC battery and charger system and auxiliary equipment
 - j) 1 lot – Relaying Equipment:
 - 2 – Line Current Differential panels, utilizing fiber circuits for the pilot channel with control of breakers
 - 2 ea – Line Relaying Panels with 2 panels used for control of each breaker
 - k) Fiber from Oncor's control building to Oncor's splice box located outside the fence at the Switching Station.
8. Facilities to be installed and owned by WETT:
 - a) Double-circuit 345 kV transmission line from the Switching Station to WETT's Cottonwood Switching Station, including bundled 1590 ACSR conductors, OPGW shielding, OPGW splices and required repeater station(s) along the transmission line, transmission line structures and rights-of-way ("Transmission Line").

- b) Two full-tension self-supporting deadend structures for the Transmission Line, including insulator strings, jumpers, and attachment hardware, constructed outside the Switching Station fence within the cross-hatched area as shown on the attached site plan.
- c) WETT will make the connection between the Transmission Line and Oncor's reduced tension span conductors at WETT's deadend structures outside the Switching Station.
- d) Fiber from Electric Transmission Texas' communication hut to Oncor's splice box.
- e) WETT will make the connection between the fiber owned by Oncor and WETT in the Oncor splice box outside the fence of the Switching Station.

9. Cost Responsibility:

Each Party shall be responsible for all costs it incurs associated with facilities it owns at, connected to, or associated with, the Points of Interconnection, including, but not limited to, costs associated with the ownership, engineering, procurement, construction, operation, maintenance, replacement, repair and testing of such facilities; provided, however, that this Paragraph 9 is subject to Article VI, Section 6.1 of this Agreement (Indemnification). This Paragraph 9 shall not relieve either Party of its respective obligation under that section.

10. Switching and Clearance:

Oncor has adopted formal switching procedures that govern safety related issues concerning the operation of its switches connected to these Points of Interconnection and will provide a copy of those procedures to WETT upon request. WETT agrees to comply with the aforementioned switching procedures of Oncor with respect to holds requested on switching devices owned by Oncor.

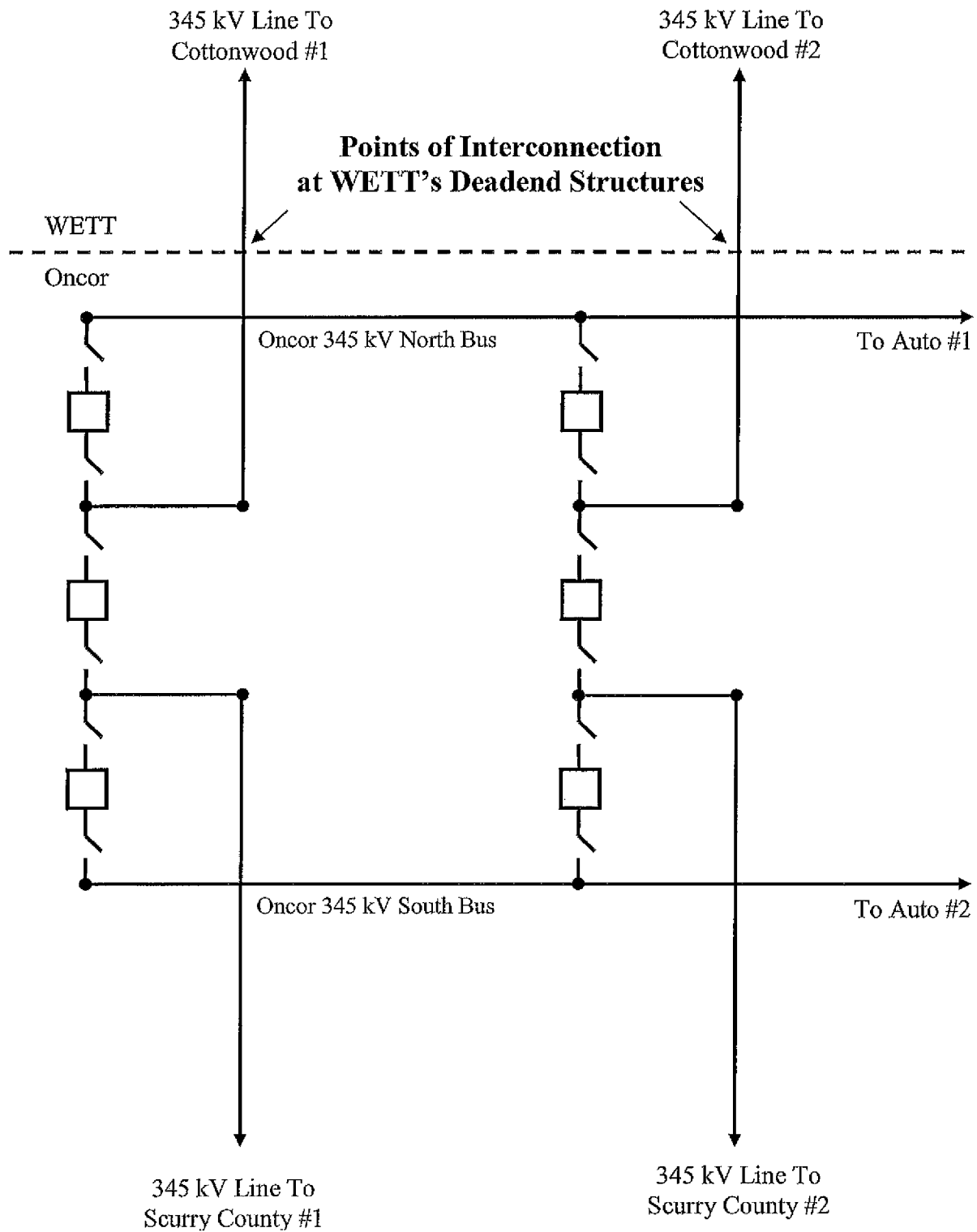
11. Standards:

The Parties agree to cause their facilities being newly constructed, as described in this Facility Schedule, to be designed and constructed in accordance with (a) Good Utility Practice, (b) applicable laws and regulations, (c) the applicable provisions of the NERC Reliability Standards and ERCOT Requirements, and (d) the applicable provisions of the following standards in effect at the time of construction of this Point of Interconnection: NESC, ANSI Standards, and IEEE Standards.

12. Supplemental terms and conditions attached (check one): ☒ Yes / ☐ No

- a) The Parties will comply with the version of Oncor Standard 500-252 Guideline – Facility Connection Requirements for Bi-Directional Points of Interconnection at Transmission Voltage with Electric Utilities in effect at the time this Facility Schedule is signed.
- b) The fiber interconnection, associated with the optical ground wire, will serve the purpose of facilitating system protection communication between the Switching Station and WETT's Cottonwood Switching Station. To the extent that Oncor provides any other services associated with such fiber interconnection, those services will be addressed in a separate agreement.

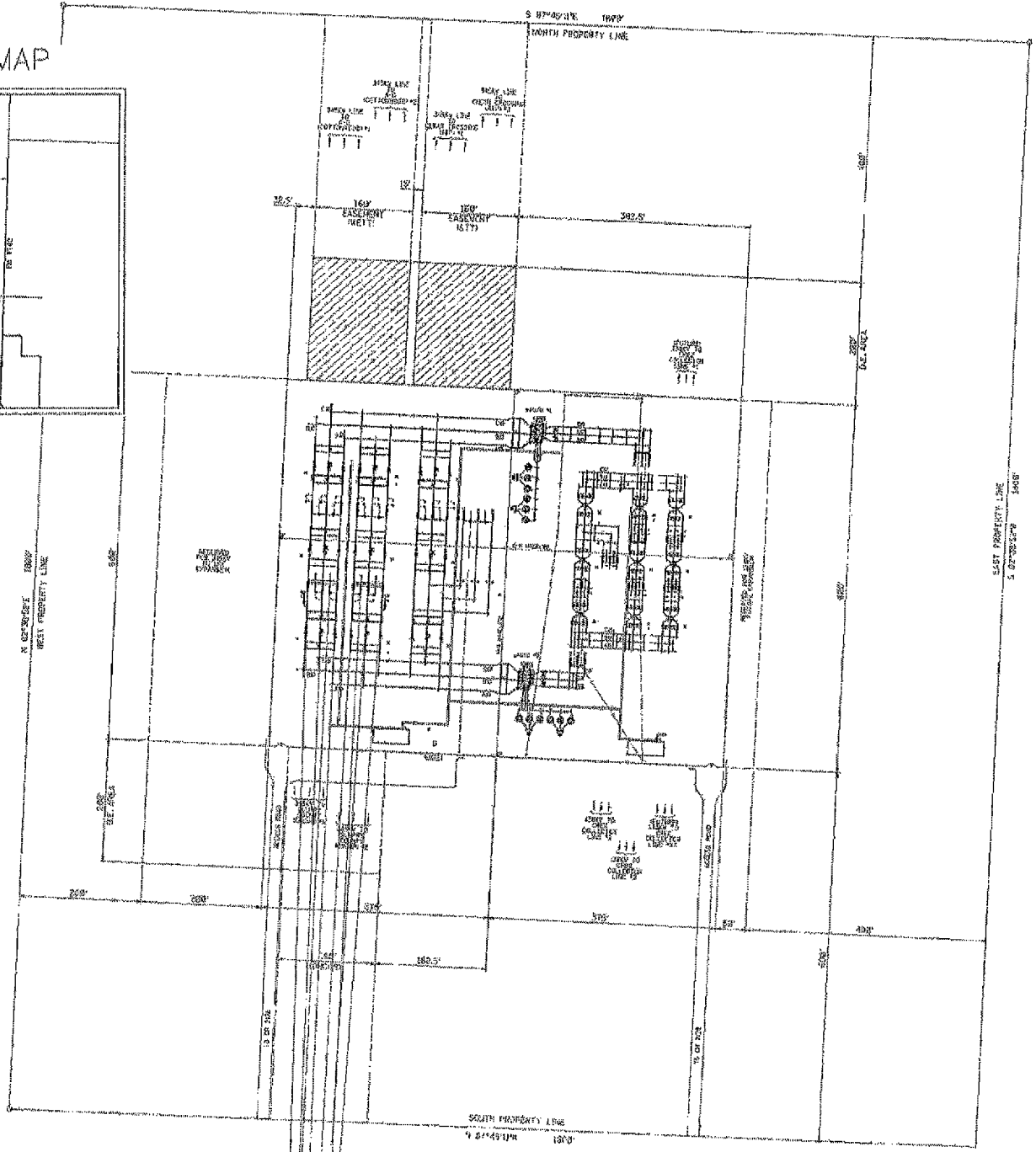
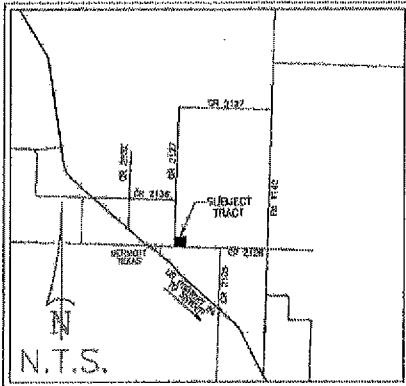
**ONE LINE DIAGRAM
DERMOTT SWITCHING STATION**



SITE PLAN DERMOTT SWITCHING STATION



VICINITY MAP



FACILITY SCHEDULE NO. 2

1. Name: Odessa EHV
2. Point of Interconnection location: The Point of Interconnection is located on WETT's deadend structures outside the fence at Oncor's Odessa EHV Switching Station in Ector County ("Switching Station"), at the point where WETT's jumpers from its transmission line conductors connect to Oncor's transmission line conductors entering the Switching Station.
3. Delivery voltage: 345 kV
5. Metering (voltage, location, losses adjustment due to metering location, and other): Not Applicable.
5. Normally closed (check one): ☒ Yes / ☐ No
6. One line diagram attached (check one): ☒ Yes / ☐ No
7. Facilities to be installed and owned by Oncor:
 - a) The Switching Station
 - b) Deadend structure inside the Switching Station, a reduced tension conductor span from such structure to WETT's deadend structure located outside the Switching Station. The reduced tension span shall use 1926 ACSS-TW conductors rated at 5000 Amps with a maximum operating temperature of 180° C and 7/16" EHS static wire.
 - c) 2 ea. – Circuit breakers, 345 kV, 3200 amperes, 50 kA
 - d) 4 ea. – Switch, air break, 345kV, 3200 amperes, gang operated, 3 phase
 - e) 3 ea. – CCVT's 345 kV, dual secondary windings for metering and relaying
 - f) 3 ea. – Surge arrestors, 345 kV
 - g) 1 lot – All galvanized steel structures, including dead-ends, switch stands, metering structures, surge arrestor supports, CCVT supports, line trap supports, static mast, and bus supports necessary for construction and operation of the switchyard facility
 - h) 1 lot – Associated buswork, conductor, connectors, grounding, conduit, control cable, foundation work, perimeter fencing, grading/dirt work and any appurtenances necessary for operation of the Switching Station
 - i) 1 lot – Control Building, including all lighting, AC power facilities, DC battery and charger system and auxiliary equipment
 - j) 2 lot – Relaying Equipment:
 - 1 – Line Current Differential panels, utilizing fiber circuits for the pilot channel with control of breakers
 - 1 ea – Line Relaying Panels with 2 panels used for control of each breaker
 - k) Fiber from Oncor's control building to Oncor's splice box located outside the fence at the Switching Station.
8. Facilities to be installed and owned by WETT:
 - a) A 345 kV transmission line from the Switching Station to WETT's Grelton Switching Station, including bundled 1590 ACSR conductors, OPGW shielding, OPGW splices and repeater station(s) along the transmission line, transmission line structures and rights-of-way

("Transmission Line").

- b) One full-tension self-supporting deadend structures for the Transmission Line, including insulator strings, jumpers, and attachment hardware, constructed outside the Switching Station fence within the cross-hatched area as shown on the attached site plan.
- c) WETT will make the connection between the Transmission Line and Oncor's reduced tension span conductors at WETT's deadend structure outside the Switching Station.
- d) Communication hut, outside the Switching Station fence within the cross-hatched area as shown on the attached site plan.
- e) Fiber from WETT's communication hut to Oncor's splice box.
- f) WETT will make the connection between the fiber owned by Oncor and WETT in the Oncor splice box outside the fence of the Switching Station.

9. Cost Responsibility:

Each Party shall be responsible for all costs it incurs associated with facilities it owns at, connected to, or associated with, the Points of Interconnection, including, but not limited to, costs associated with the ownership, engineering, procurement, construction, operation, maintenance, replacement, repair and testing of such facilities; provided, however, that this Paragraph 9 is subject to Article VI, Section 6.1 of this Agreement (Indemnification). This Paragraph 9 shall not relieve either Party of its respective obligation under that section.

10. Switching and Clearance:

Oncor has adopted formal switching procedures that govern safety related issues concerning the operation of its switches connected to these Points of Interconnection and will provide a copy of those procedures to WETT upon request. WETT agrees to comply with the aforementioned switching procedures of Oncor with respect to holds requested on switching devices owned by Oncor.

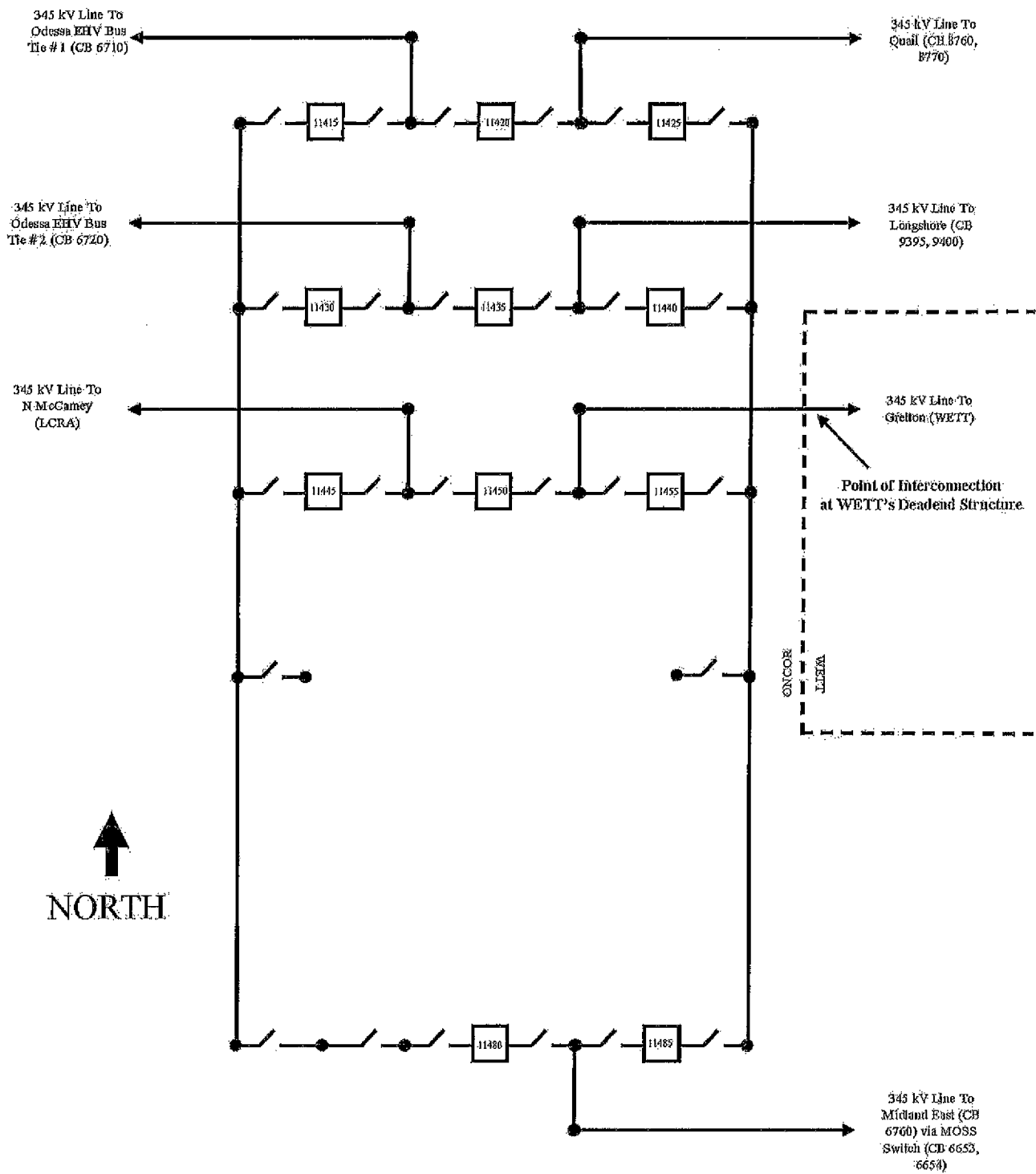
11. Standards:

The Parties agree to cause their facilities being newly constructed, as described in this Facility Schedule, to be designed and constructed in accordance with (a) Good Utility Practice, (b) applicable laws and regulations, (c) the applicable provisions of the NERC Reliability Standards and ERCOT Requirements, and (d) the applicable provisions of the following standards in effect at the time of construction of this Point of Interconnection: NESC, ANSI Standards, and IEEE Standards.

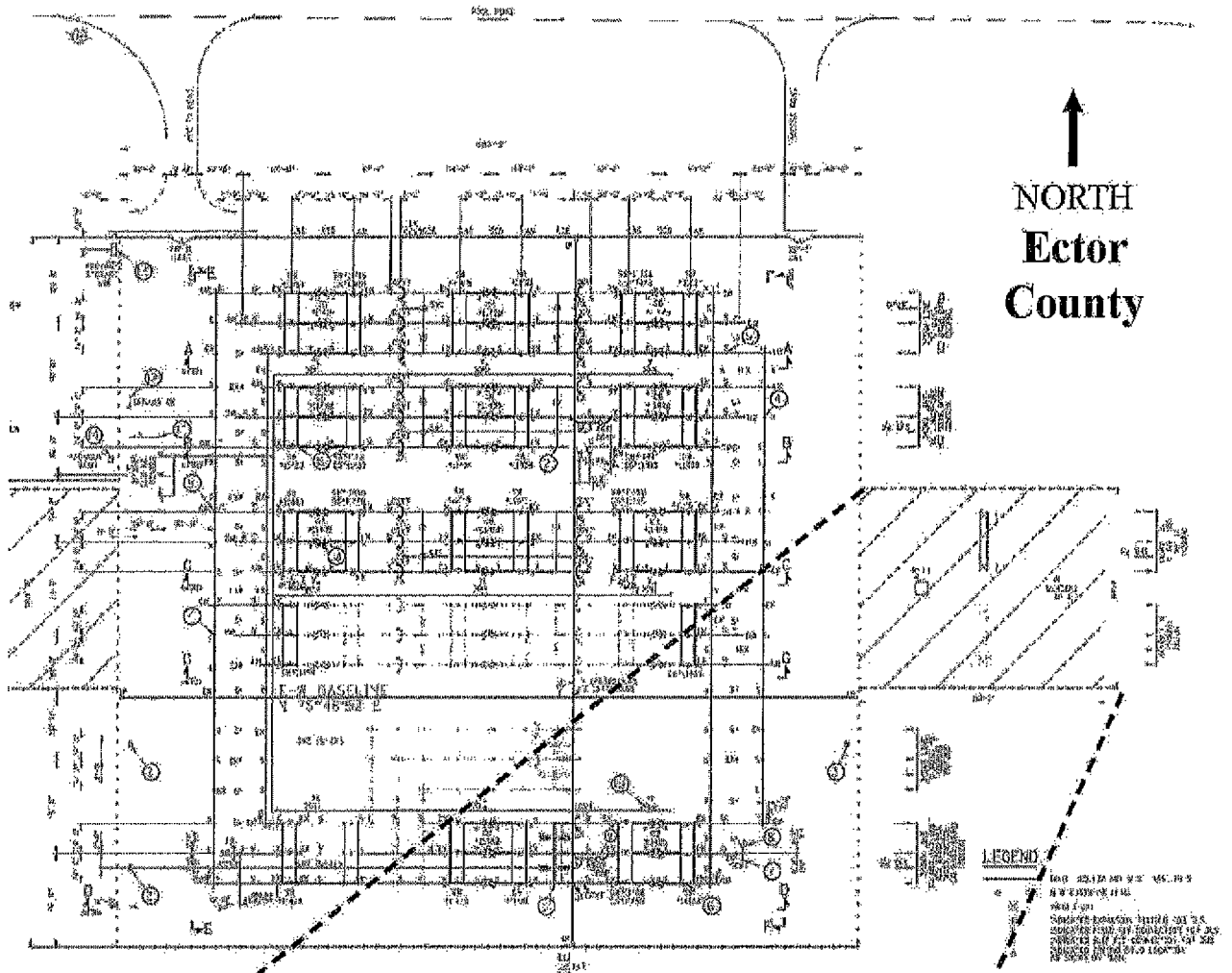
12. Supplemental terms and conditions attached (check one): ☒ X ☐ Yes / ☐ No

- a) The Parties will comply with the version of Oncor Standard 500-252 Guideline – Facility Connection Requirements for Bi-Directional Points of Interconnection at Transmission Voltage with Electric Utilities in effect at the time this Facility Schedule is signed.
- b) The fiber interconnection, associated with the optical ground wire, will serve the purpose of facilitating system protection communication between the Switching Station and WETT's Grelton Switching Station. To the extent that Oncor provides any other services associated with such fiber interconnection, those services will be addressed in a separate agreement.

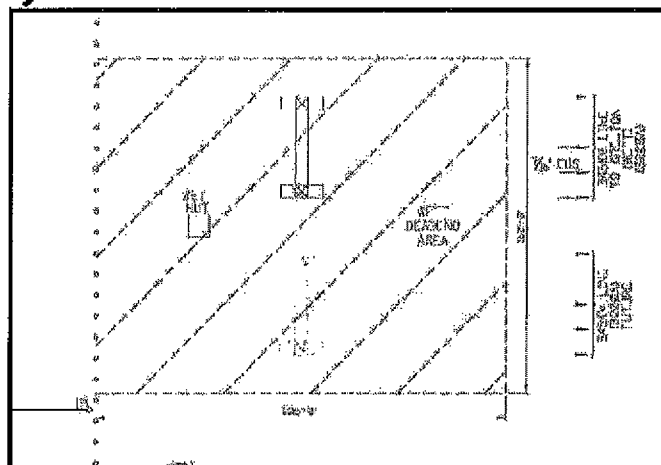
ONE LINE DIAGRAM ODESSA EHV SWITCHING STATION



SITE PLAN ODESSA EHV SWITCHING STATION



WETT's Designated Hatched Area Detail



FACILITY SCHEDULE NO. 3

1. Name: Scurry County South
2. Point of Interconnection location: The Point of Interconnection is located on WETT's deadend structure outside the fence at Oncor's Scurry County South Switching Station in Scurry County ("Switching Station"), at the point where WETT's jumpers from its transmission line conductors connect to Oncor's transmission line conductors entering the Switching Station.
3. Delivery voltage: 345 kV
6. Metering (voltage, location, losses adjustment due to metering location, and other): Not Applicable.
5. Normally closed (check one): ☒ Yes / ☐ No
6. One line diagram attached (check one): ☒ Yes / ☐ No
7. Facilities to be installed and owned by Oncor:
 - a) The Switching Station
 - b) Dead-end structure inside the Switching Station, a reduced tension conductor span from such structure to WETT's deadend structure located outside the Switching Station. The reduced tension span shall use 1926 ACSS-TW conductors rated at 5000 Amps with a maximum operating temperature of 180° C and 7/16" EHS static wire.
 - c) 4 ea. – Circuit breakers, 345 kV, 5000 amperes, 50 kA
 - d) 8 ea. – Switch, air break, 345kV, 5500 amperes, gang operated, 3 phase
 - e) 6 ea. – CCVT's 345 kV, dual secondary windings for metering and relaying
 - f) 6 ea. – Surge arrestors, 345 kV
 - g) 1 lot – All galvanized steel structures, including dead-ends, switch stands, metering structures, surge arrestor supports, CCVT supports, line trap supports, static mast, and bus supports necessary for construction and operation of the switchyard facility
 - h) 1 lot – Associated buswork, conductor, connectors, grounding, conduit, control cable, foundation work, perimeter fencing, grading/dirt work and any appurtenances necessary for operation of the Switching Station
 - i) 1 lot – Control Building, including all lighting, AC power facilities, DC battery and charger system and auxiliary equipment
 - j) 1 lot – Relaying Equipment:
 - 2 – Line Current Differential panels, utilizing fiber circuits for the pilot channel with control of breakers
 - 2 ea – Line Relaying Panels with 2 panels used for control of each breaker
 - k) Fiber from Oncor's control building to Oncor's splice box located outside the fence at the Switching Station.
8. Facilities to be installed and owned by WETT:
 - a) Double-circuit 345 kV transmission line from the Switching Station to WETT's Switching Station, including bundled 1590 ACSR conductors, OPGW shielding, OPGW splices and repeater station(s) along the transmission line, transmission line structures and rights-of-way ("Transmission Line").

- b) One full-tension self-supporting deadend structures for the Transmission Line, including insulator strings, jumpers, and attachment hardware, constructed outside the Switching Station fence within the cross-hatched area as shown on the attached site plan.
- c) WETT will make the connection between the Transmission Line and Oncor's reduced tension span conductors at WETT's deadend structure outside the Switching Station.
- d) Fiber from Electric Transmission Texas' communication hut to Oncor's splice box.
- e) WETT will make the connection between the fiber owned by Oncor and WETT in the Oncor splice box outside the fence of the Switching Station.

9. Cost Responsibility:

Each Party shall be responsible for all costs it incurs associated with facilities it owns at, connected to, or associated with, the Points of Interconnection, including, but not limited to, costs associated with the ownership, engineering, procurement, construction, operation, maintenance, replacement, repair and testing of such facilities; provided, however, that this Paragraph 9 is subject to Article VI, Section 6.1 of this Agreement (Indemnification). This Paragraph 9 shall not relieve either Party of its respective obligation under that section.

10. Switching and Clearance:

Oncor has adopted formal switching procedures that govern safety related issues concerning the operation of its switches connected to these Points of Interconnection and will provide a copy of those procedures to WETT upon request. WETT agrees to comply with the aforementioned switching procedures of Oncor with respect to holds requested on switching devices owned by Oncor.

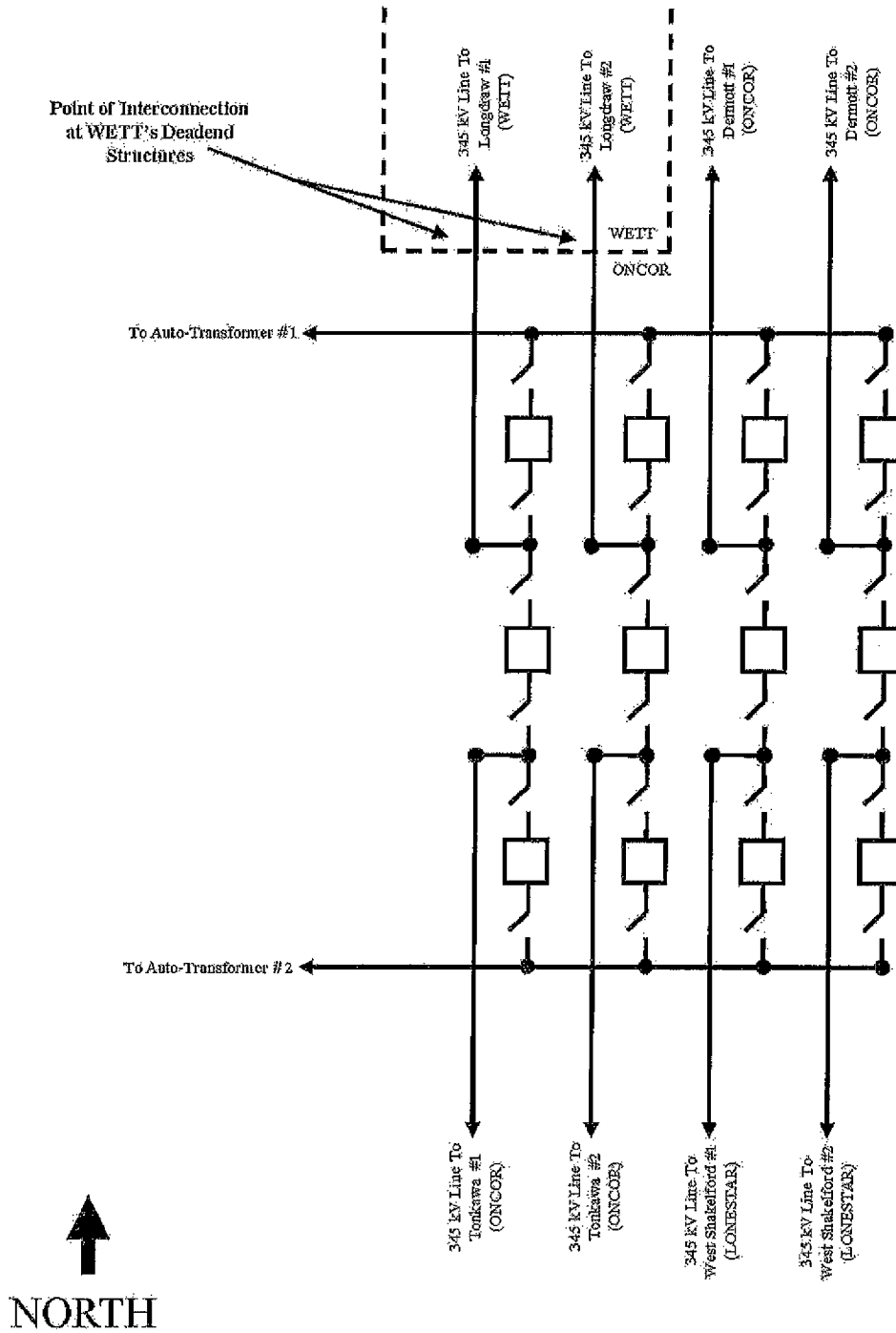
11. Standards:

The Parties agree to cause their facilities being newly constructed, as described in this Facility Schedule, to be designed and constructed in accordance with (a) Good Utility Practice, (b) applicable laws and regulations, (c) the applicable provisions of the NERC Reliability Standards and ERCOT Requirements, and (d) the applicable provisions of the following standards in effect at the time of construction of this Point of Interconnection: NESC, ANSI Standards, and IEEE Standards.

12. Supplemental terms and conditions attached (check one): ☒ Yes / ☐ No

- a) The Parties will comply with the version of Oncor Standard 500-252 Guideline – Facility Connection Requirements for Bi-Directional Points of Interconnection at Transmission Voltage with Electric Utilities in effect at the time this Facility Schedule is signed.
- b) The fiber interconnection, associated with the optical ground wire, will serve the purpose of facilitating system protection communication between the Switching Station and WETT's Long Draw and Faraday Switching Stations. To the extent that Oncor provides any other services associated with such fiber interconnection, those services will be addressed in a separate agreement.

ONE LINE DIAGRAM SCURRY COUNTY SWITCHING STATION



↑
NORTH
Scurry
County

