

FACILITY SCHEDULE NO. 61

- 1 Name: **Matthews**
2. Location: The Matthews Substation is located 2/10 mile south of the town of Matthews, Texas, on FM 102 in Colorado County. The Point of Interconnection is located where the jumper connectors from the 69 kV transformer switch connect to the 69 kV bus.
3. Delivery Voltage: 69 kV
4. Normal Operation of Interconnection: Closed
5. One-Line Diagram Attached: Yes
6. Facility Ownership Responsibilities of the Parties:

LCRA owns the following facilities.

- the following transmission lines comprised of structures, easements, conductors, insulators, and connecting hardware:
 - Matthews to Eagle Lake 69 kV transmission line
 - Matthews to Garwood City 69 kV transmission line
- transmission line dead-end insulator strings and termination hardware
- 69 kV transmission line switches 1783 and 1754
- 69 kV buses, both 69 kV high bus and 69 kV low bus, including conductors, jumpers between buses, insulators and termination hardware
- jumpers from switches 1783 and 1754 to the lines and to the 69 kV bus

AEP owns the following facilities:

- the Matthews Substation including all facilities within it, except for those facilities owned by LCRA
- the 69 kV transformer switch and jumper that connect to the 69 kV bus conductors inside the Matthews Substation
- any under-built distribution voltage circuits attached to the 69 kV transmission lines that terminate into the station

7. Facility Operation and Maintenance Responsibilities of the Parties:

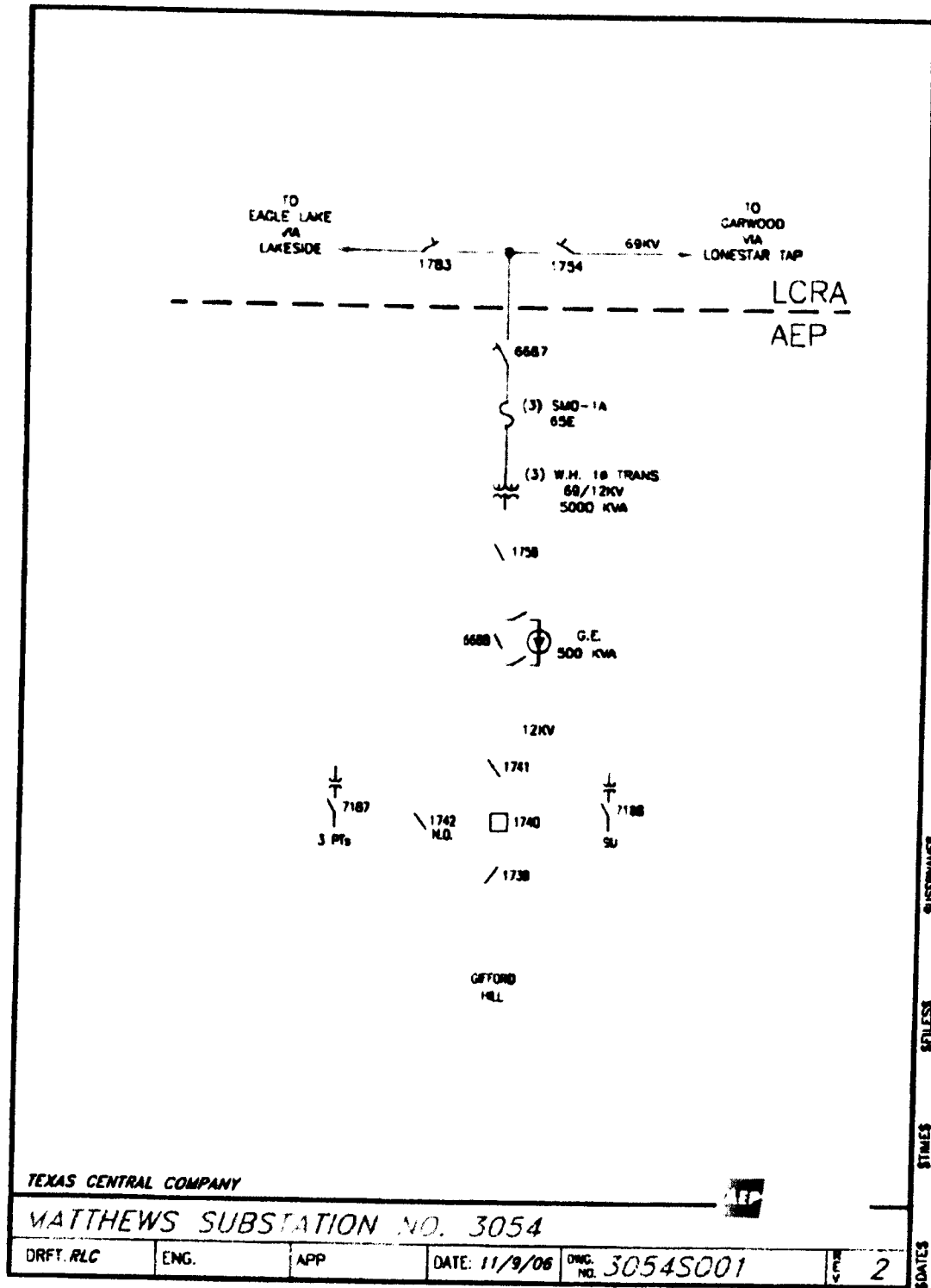
- AEP will control and operate the following equipment until LCRA takes over operational control.

- 69 kV switch 1783 and associated 69 kV transmission line to Eagle Lake via Lakeside Pump
- 69 kV switch 1754 and associated 69 kV transmission line to Garwood City via Lone Star Tap
- AEP controls and operates all other equipment in the station including the following:
 - 69 kV switch 6687
 - all distribution equipment in the station
- Each Party maintains the facilities it owns that are provided for in this Facility Schedule. Maintenance of the facilities, including circuit breaker relays, that are owned by one Party that protect the facilities owned by the other Party, will be subject to review and approval by the other Party.

8. Cost Responsibilities of the Parties:

- Each Party will be fully responsible for the costs and liabilities related to the facilities it owns.
- Each Party will be responsible for all costs it incurs in connection with the establishment and maintenance of the Point of Interconnection in accordance with this Facility Schedule.

9. Other Terms and Conditions: None



FACILITY SCHEDULE NO. 62

- 1 Name: **Garwood Lone Star**

2. Location: The Garwood Lone Star Substation (a.k.a. Lone Star Cement) is located off of FM 2614 between the towns of Garwood and Matthews, Texas in Colorado County. The Point of Interconnection is located where the AEP jumper from the 69 kV transformer switch connects to the 69 kV tap transmission line.

3. Delivery Voltage: 69 kV

4. Normal Operation of Interconnection: Closed

5. One-Line Diagram Attached: Yes

6. Facility Ownership Responsibilities of the Parties:

LCRA owns the following facilities

- the following transmission lines comprised of structures, easements, conductors, insulators, and connecting hardware:
 - Garwood City to Matthews 69 kV transmission line
- transmission line dead-end insulator strings and termination hardware
- transmission tap line from the station to the Garwood City to Matthews 69 kV transmission line, and associated 69 kV line switches 1947 and 1953

AEP owns the following facilities:

- the Garwood Lone Star Substation including all facilities within it
- the 69 kV transmission tap line surge arresters
- any under-built distribution voltage circuits attached to the 69 kV transmission lines that terminate into the station

7. Facility Operation and Maintenance Responsibilities of the Parties:
 - AEP will control and operate the following equipment until LCRA takes over operational control:
 - 69 kV switch 1947 and associated 69 kV transmission line to Matthews,
 - 69 kV switch 1953 and associated 69 kV transmission line to Garwood City,
 - 69 kV transmission tap line from the Garwood City to Matthews 69 kV line to the Lone Star station.
 - AEP controls and operates all other equipment in the station including the

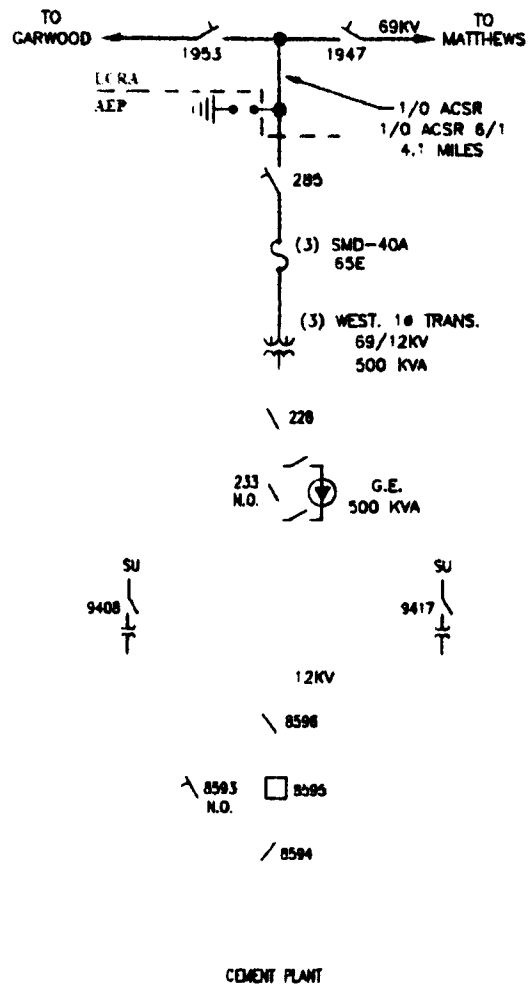
following:

- 69 kV switch 285
- all distribution equipment in the station
- Each Party maintains the facilities it owns that are provided for in this Facility Schedule. Maintenance of the facilities, including circuit breaker relays, that are owned by one Party that protect the facilities owned by the other Party, will be subject to review and approval by the other Party.

8. Cost Responsibilities of the Parties:

- Each Party will be fully responsible for the costs and liabilities related to the facilities it owns.
- Each Party will be responsible for all costs it incurs in connection with the establishment and maintenance of the Point of Interconnection in accordance with this Facility Schedule.

9. Other Terms and Conditions: None



GARWOOD LONESTAR NO. 3070

AEP AMERICAN
ELECTRIC
POWER

DRFT. ALC

ENG.

APP.

DATE: 11/6/06

DWG. NO. 3070S001

3

FACILITY SCHEDULE NO. 63

- 1 Name: **Garwood City**
2. Location: The Garwood City Substation is located southeast of Garwood, Texas on Mansfield Road in Colorado County. The Point of Interconnection is located at the top connectors on the jumpers that connect the 69 kV high bus to the 69 kV low bus.
3. Delivery Voltage: 69 kV
4. Normal Operation of Interconnection. Closed
5. One-Line Diagram Attached: Yes
6. Facility Ownership Responsibilities of the Parties:

LCRA owns the following facilities:

- the following transmission lines comprised of structures, easements, conductors, insulators, and connecting hardware:
 - Garwood City to Matthews 69 kV transmission line
 - Garwood City to El Campo 69 kV transmission line
- transmission line dead-end insulator strings and termination hardware
- 69 kV transmission line switches 848 and 856
- 69 kV high bus, including conductors, insulators and termination hardware
- jumpers from the 69 kV transmission line switches 856 and 848 to the lines and to the high bus
- 1 – 69 kV line potential transformer and foundation

AEP owns the following facilities:

- the Garwood City Substation including all facilities within it, except for those facilities owned by LCRA
- the 69 kV low bus and jumpers to high bus inside the Garwood City Substation
- any under-built distribution voltage circuits attached to the 69 kV transmission lines that terminate into the station

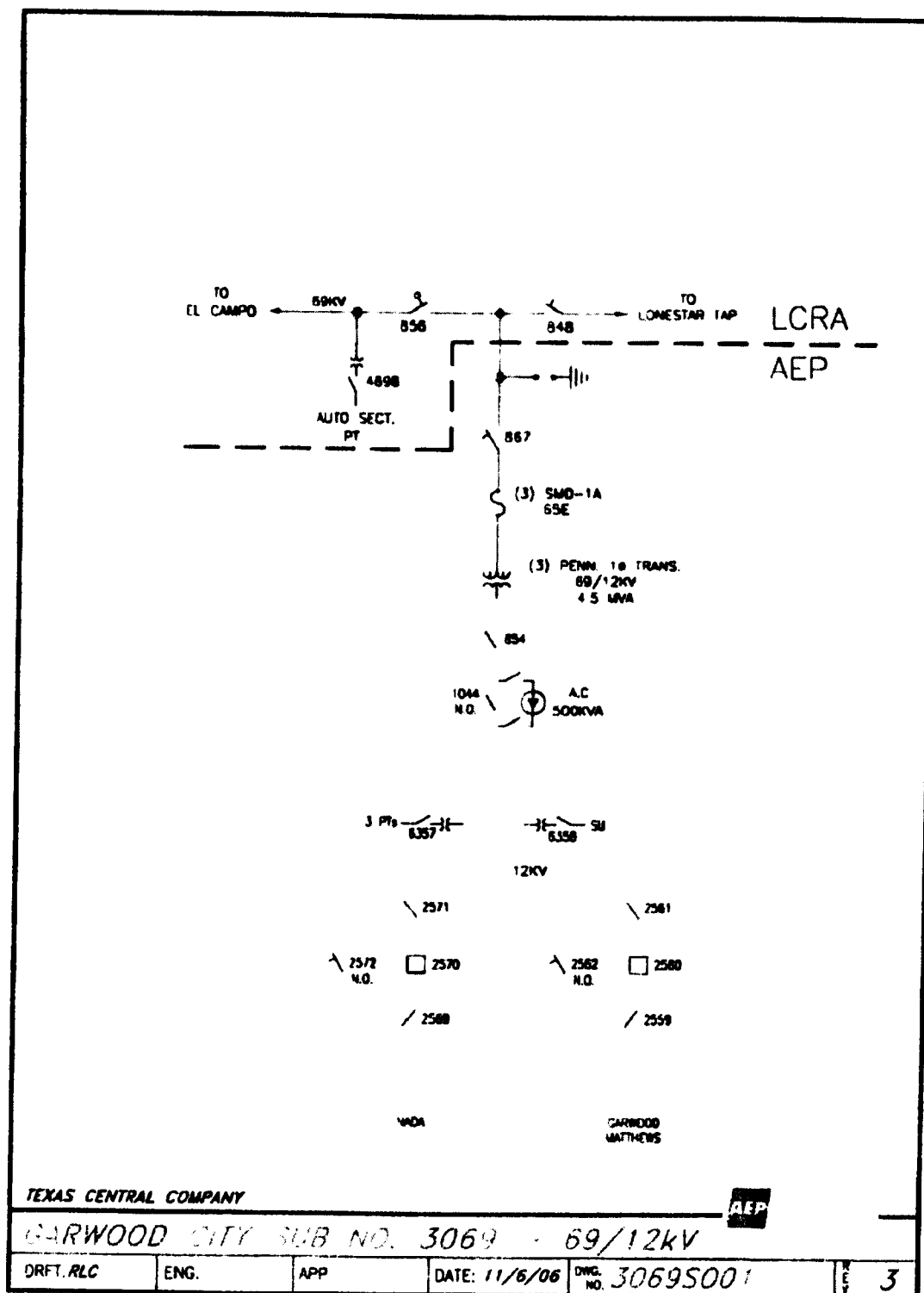
7. Facility Operation and Maintenance Responsibilities of the Parties:
 - AEP will control and operate the following equipment until LCRA takes over operational control:
 - 69 kV switch 848 and associated 69 kV transmission line to Lone Star tap

- 69 kV switch 856 and associated 69 kV transmission line to El Campo
- AEP controls and operates all other equipment in the station including the following:
 - 69 kV switch 867
 - all distribution equipment in the station
- Each Party maintains the facilities it owns that are provided for in this Facility Schedule. Maintenance of the facilities, including circuit breaker relays, that are owned by one Party that protect the facilities owned by the other Party, will be subject to review and approval by the other Party.

8. Cost Responsibilities of the Parties:

- Each Party will be fully responsible for the costs and liabilities related to the facilities it owns.
- Each Party will be responsible for all costs it incurs in connection with the establishment and maintenance of the Point of Interconnection in accordance with this Facility Schedule.

9. Other Terms and Conditions: None



FACILITY SCHEDULE NO. 64

1. **Name:** **El Campo**

2. **Location:** The El Campo Substation is located at 506 Marion Street in El Campo, Texas in Wharton County. There are two Points of Interconnection at the El Campo Substation. One is at the termination of the 69 kV transmission line from the Garwood City Substation and the other is at the termination of the 69 kV transmission line from the Altair Switching Station. Both Points of Interconnection are located at the point where the jumper conductors from the station equipment physically contact the connectors on the 69 kV transmission line conductors.

3. **Delivery Voltage:** 69 kV

4. **Normal Operation of Interconnection:** Closed

5. **One-Line Diagram Attached:** Yes

6. **Facility Ownership Responsibilities of the Parties:**

AEP owns the following facilities:

- the El Camp Substation including all the facilities within it
- jumper conductors from the station facilities to the Point(s) of Interconnection
- deadend structures that terminate all transmission lines into the station
- any under-built distribution voltage circuits attached to the 69 kV transmission lines that terminate into the station

LCRA owns the following facilities:

- the following transmission lines comprised of structures, easements, conductors, insulators, and connecting hardware:
 - El Campo to Garwood City 69 kV transmission line
 - El Campo to Altair 69 kV transmission line
- insulators and hardware on the deadend structures that terminate the 69 kV transmission line from the Garwood City Substation
- insulators and hardware on the deadend structures that terminate the 69 kV transmission line from the Altair Switching Station

7. **Facility Operation and Maintenance Responsibilities of the Parties:**
 - AEP controls and operates the El Campo Station, including all facilities within it

- AEP controls and operates all transmission lines that terminate into the station except for the 69 kV lines from the Eagle Lake and Altair substations
- AEP will control and operate the following equipment until LCRA takes over operational control
 - 69 kV transmission line to Eagle Lake, via Garwood
 - 69 kV transmission line to Altair
- Each Party maintains the facilities it owns that are provided for in this Facility Schedule. Maintenance of the facilities, including circuit breaker relays, that are owned by one Party that protect the facilities owned by the other Party, will be subject to review and approval by the other Party.

8. Cost Responsibilities of the Parties:

- Each Party will be fully responsible for the costs and liabilities related to the facilities it owns.
- Each Party will be responsible for all costs it incurs in connection with the establishment and maintenance of the Point of Interconnection in accordance with this Facility Schedule.

9. Other Terms and Conditions: None

FACILITY SCHEDULE NO. 65

1. **Name:** **B&B Gravel**
2. **Location:** The B&B Gravel Substation is located at 6747 State Hwy 71, Garwood, Texas in Colorado County. The Point of Interconnection is located where the top connectors on the AEP transformer switch connects to the LCRA 69 kV jumpers.
3. **Delivery Voltage:** 69 kV
4. **Normal Operation of Interconnection:** Closed
5. **One-Line Diagram Attached:** Yes
6. **Facility Ownership Responsibilities of the Parties:**

LCRA owns the following facilities:

- the following transmission lines comprised of structures, easements, conductors, insulators, and connecting hardware:
 - B&B Gravel to Altair 69 kV transmission line
 - B&B Gravel to Garwood Pump 69 kV transmission line
- transmission line wood H-frame structure, including equipment mounting crossarms for 69 kV line switch 3897
- transmission line dead-end insulator string and termination hardware
- 69 kV sectionalizing switch 3897
- jumpers from switch 3897 to the 69 kV line and to switch 3927

AEP owns the following facilities:

- the B&B Gravel Substation including all facilities within it
- the following equipment on the H-frame structure owned by LCRA:
 - 69 kV switch 3927 and associated mounting hardware
 - 69 kV arresters and associated mounting hardware
 - 69 kV fuses and associated mounting hardware
- any under-built distribution voltage circuits attached to the 69 kV transmission lines that terminate into the station

7. **Facility Operation and Maintenance Responsibilities of the Parties:**

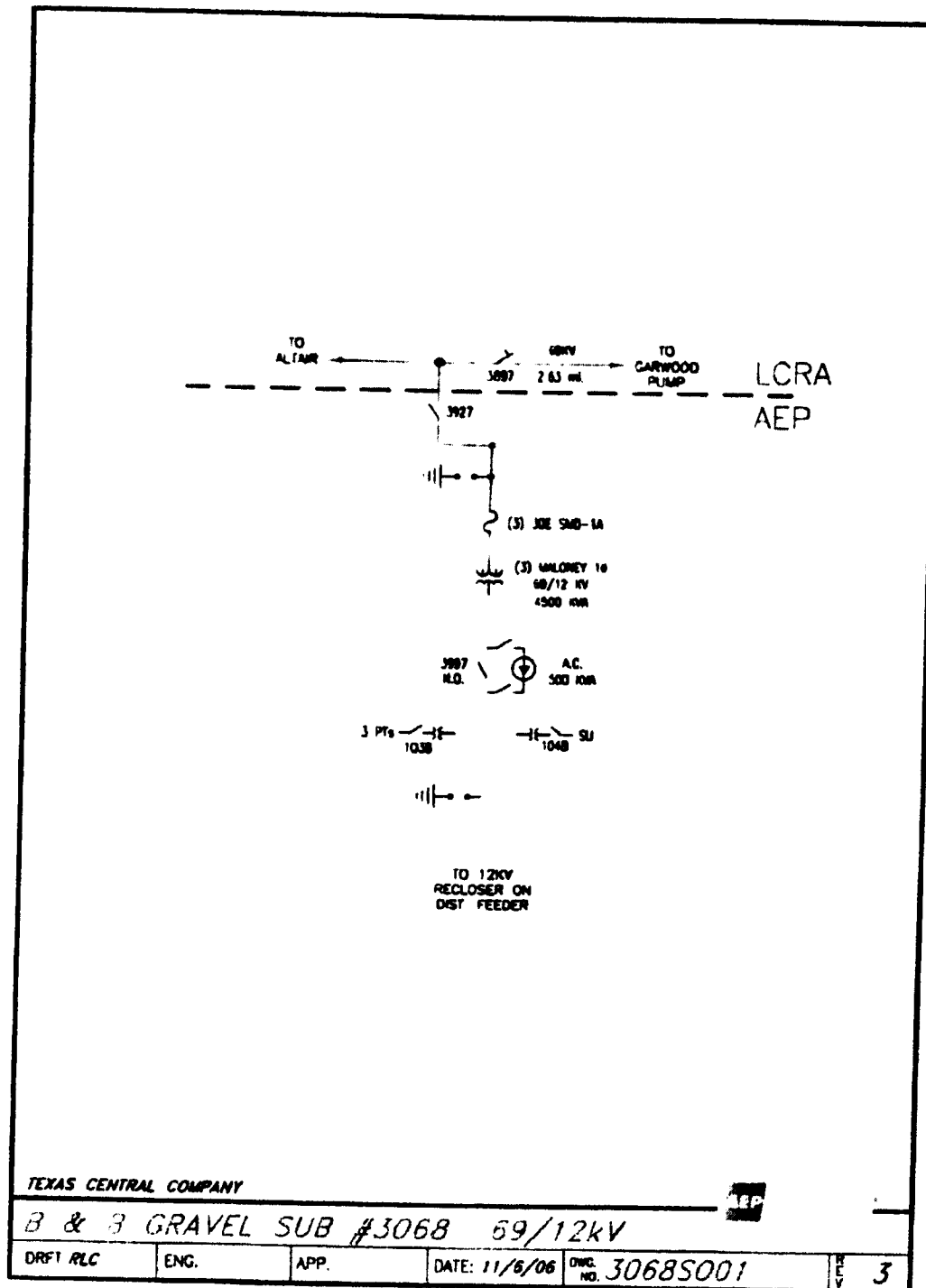
- AEP will control and operate the following equipment until LCRA takes over operational control:

- 69 kV switch 3897 and associated 69 kV transmission line to Altair and Garwood Pump
- AEP controls and operates all other equipment in the station including the following:
 - 69 kV switch 3927
 - all distribution equipment in the station
- Each Party maintains the facilities it owns that are provided for in this Facility Schedule. Maintenance of the facilities, including circuit breaker relays, that are owned by one Party that protect the facilities owned by the other Party, will be subject to review and approval by the other Party.

8. Cost Responsibilities of the Parties:

- Each Party will be fully responsible for the costs and liabilities related to the facilities it owns.
- Each Party will be responsible for all costs it incurs in connection with the establishment and maintenance of the Point of Interconnection in accordance with this Facility Schedule.

9. Other Terms and Conditions: None



FACILITY SCHEDULE NO. 66

1. Name: **Garwood Pump**
2. Location: The Garwood Pump Substation is located north of Garwood, Texas in Colorado County. (From Garwood, travel north 4.9 miles on Highway 71, turn east at canal and follow the gravel road 1.7 miles.) The Point of Interconnection is located at the termination of the 69 kV transmission line continuing from the B&B Gravel Substation where the AEP jumper conductors from the Garwood Pump Substation equipment physically contact the connectors on the 69 kV transmission line conductors.
3. Delivery Voltage: 69 kV
4. Normal Operation of Interconnection: Closed
5. One-Line Diagram Attached: Yes
6. Facility Ownership Responsibilities of the Parties:

LCRA owns the following facilities:

- the following transmission lines comprised of structures, easements, conductors, insulators, and connecting hardware:
 - Garwood Pump to B&B Gravel 69 kV transmission line
- insulators and hardware on the structures that terminate the 69 kV transmission line onto the station structure

AEP owns the following facilities:

- the Garwood Pump Substation including all facilities within it
- any under-built distribution voltage circuits attached to the 69 kV transmission lines that terminate into the station

7. Facility Operation and Maintenance Responsibilities of the Parties:

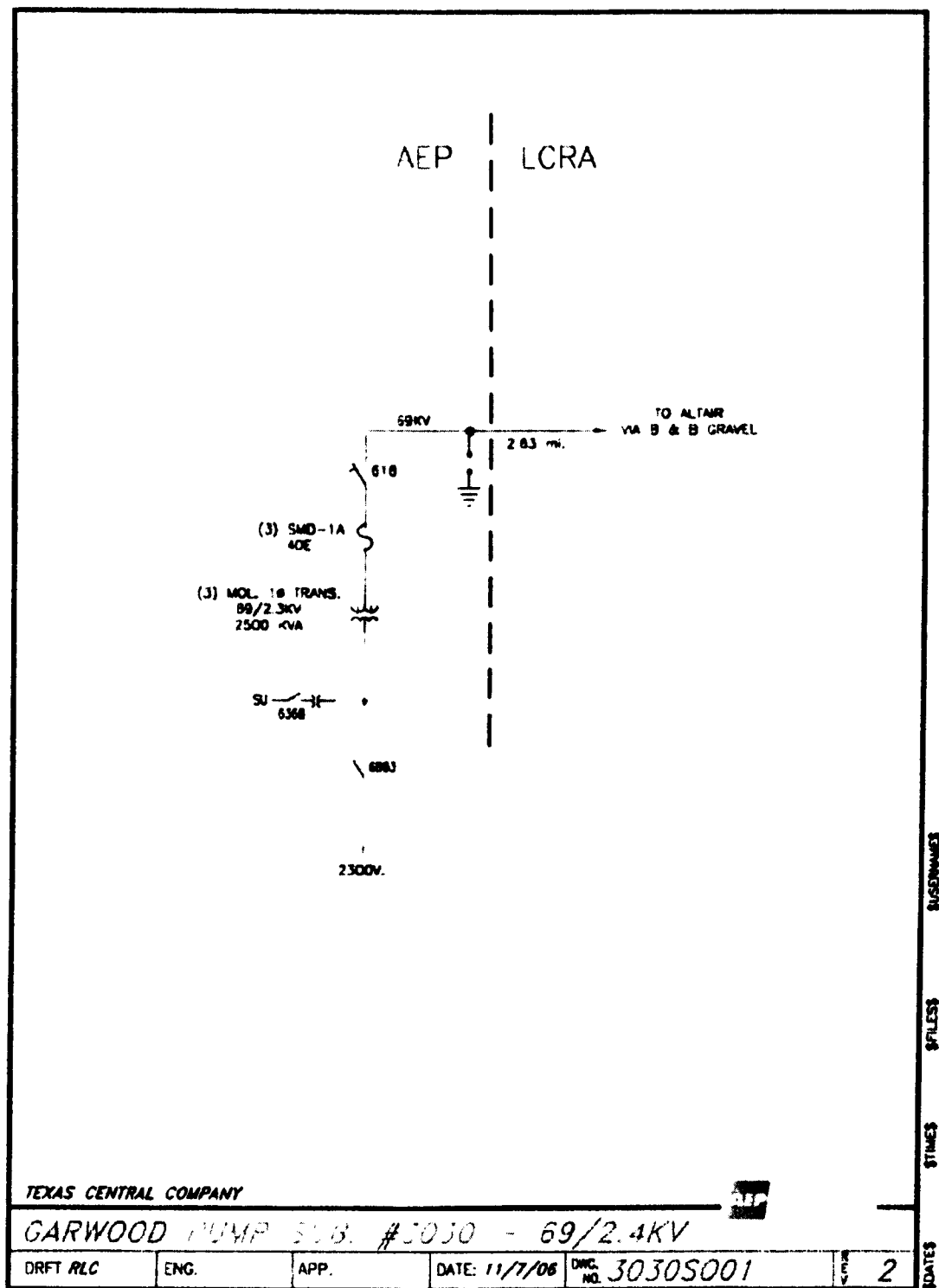
- AEP will control and operate the following equipment until LCRA takes over operational control:
 - 69 kV transmission line from the station to B&B Gravel station.
- AEP controls and operates all other equipment in the station including the following:
 - 69 kV switch 618
 - all distribution equipment in the station

- Each Party maintains the facilities it owns that are provided for in this Facility Schedule. Maintenance of the facilities, including circuit breaker relays, that are owned by one Party that protect the facilities owned by the other Party, will be subject to review and approval by the other Party

8. Cost Responsibilities of the Parties:

- Each Party will be fully responsible for the costs and liabilities related to the facilities it owns.
- Each Party will be responsible for all costs it incurs in connection with the establishment and maintenance of the Point of Interconnection in accordance with this Facility Schedule.

9. Other Terms and Conditions: None



FACILITY SCHEDULE NO. 67

1. **Name:** **Ideal Cement**
2. **Location:** The Ideal Cement Substation, a.k.a. Garwood Ideal Substation, is located north of Garwood, Texas in Colorado County. (From Garwood, go north 4.1 miles on Highway 71, turn west, travel 1.7 miles, turn left and travel 2.1 miles.) The Point of Interconnection is located where the AEP jumper conductors from the Ideal Cement Substation equipment physically contact the connectors on the 69 kV transmission line.
3. **Delivery Voltage:** 69 kV
4. **Normal Operation of Interconnection:** Closed
5. **One-Line Diagram Attached:** Yes
6. **Facility Ownership Responsibilities of the Parties:**

LCRA owns the following facilities:

- the following transmission lines comprised of structures, easements, conductors, insulators, and connecting hardware:
 - Altair to Garwood Relief Pump 69 kV transmission line
- insulators and hardware on the deadend structures that terminate the 69 kV line onto the station structure

AEP owns the following facilities:

- the Ideal Cement Substation including all facilities within it
- any under-built distribution voltage circuits attached to the 69 kV transmission lines that terminate into the station

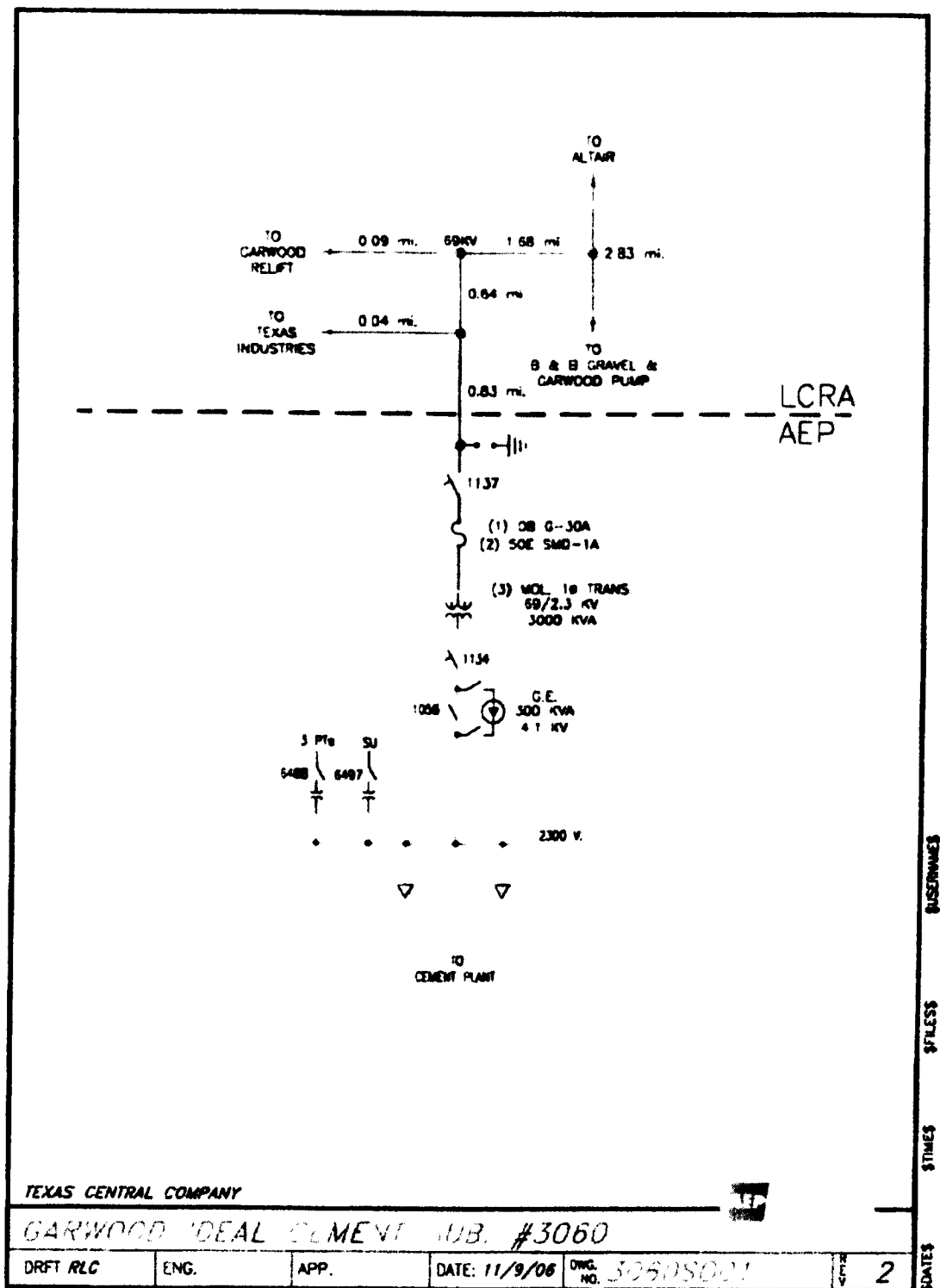
7. **Facility Operation and Maintenance Responsibilities of the Parties:**
 - AEP will control and operate the following equipment until LCRA takes over operational control:
 - 69 kV transmission line from the station to Altair
 - AEP controls and operates all other equipment in the station including the following:
 - 69 kV switch 1137
 - all distribution equipment in the station

- Each Party maintains the facilities it owns that are provided for in this Facility Schedule. Maintenance of the facilities, including circuit breaker relays, that are owned by one Party that protect the facilities owned by the other Party, will be subject to review and approval by the other Party.

8. Cost Responsibilities of the Parties:

- Each Party will be fully responsible for the costs and liabilities related to the facilities it owns.
- Each Party will be responsible for all costs it incurs in connection with the establishment and maintenance of the Point of Interconnection in accordance with this Facility Schedule.

9. Other Terms and Conditions: None



FACILITY SCHEDULE NO. 68

1. **Name:** **Garwood Relief**

2. **Location:** The Garwood Relief Substation is located north of Garwood, Texas in Colorado County. (From Garwood travel north 4.2 miles on Highway 71, turn west, travel 1.7 miles, turn right on gravel road and travel 1.3 miles.) The Point of Interconnection is located at the termination of the 69 kV line that is tapped off of the Altair Switching Station to Garwood Pump Station 69 kV transmission line where the jumper conductors from the station equipment physically contact the connectors on the 69 kV transmission line conductors.

3. **Delivery Voltage:** 69 kV

4. **Normal Operation of Interconnection:** Closed

5. **One-Line Diagram Attached:** Yes

6. **Facility Ownership Responsibilities of the Parties:**

LCRA owns the following facilities:

- the following transmission lines comprised of structures, easements, conductors, insulators, and connecting hardware:
 - Garwood Relief to Altair 69 kV transmission line
- insulators and hardware on the deadend structures that terminate the 69 kV transmission tap line into the station

AEP owns the following facilities:

- the Garwood Relief Substation including all facilities within it
- any under-built distribution voltage circuits attached to the 69 kV transmission lines that terminate into the station

7. **Facility Operation and Maintenance Responsibilities of the Parties:**
 - AEP will control and operate the following equipment until LCRA takes over operational control:
 - 69 kV transmission tap line from the station to Altair
 - AEP controls and operates all other equipment in the station including the following:
 - 69 kV switch 108

Attachments – Page 117

- all distribution equipment in the station
 - Each Party maintains the facilities it owns that are provided for in this Facility Schedule. Maintenance of the facilities, including circuit breaker relays, that are owned by one Party that protect the facilities owned by the other Party, will be subject to review and approval by the other Party.
8. Cost Responsibilities of the Parties:
- Each Party will be fully responsible for the costs and liabilities related to the facilities it owns.
 - Each Party will be responsible for all costs it incurs in connection with the establishment and maintenance of the Point of Interconnection in accordance with this Facility Schedule.
9. Other Terms and Conditions: None

