



Control Number: 35077



Item Number: 100

Addendum StartPage: 0

PUBLIC UTILITY COMMISSION OF TEXAS
Substantive Rule 25.195(e)

Project No. 35077

Revised Interconnection Agreement

Dated as of April 3, 2009

Between

AEP Texas Central Company

and

Electric Transmission Texas, LLC

APRIL 24, 2009

TABLE OF CONTENTS

<u>SECTION</u>	<u>FILE NAME</u>	<u>Page</u>
Revised Interconnection Agreement	No File	2-16

2009 APR 24 PM 3:06
PUBLIC UTILITY COMMISSION OF TEXAS
FILING CLERK



April 22, 2009

Kimberly D. Bose
Secretary
Federal Energy Regulatory Commission
888 First Street, NE
Washington, DC 20426

Dear Secretary Bose:

Pursuant to Section 35.13 of the Commission's regulations, 18 CFR § 35.13, American Electric Power Service Corporation ("AEPSC"), as agent for AEP Texas Central Company ("AEPTCC"), submits for filing new and revised sheets of the transmission interconnection agreement (the "Transmission Interconnection Agreement") between AEPTCC and Electric Transmission Texas, LLC ("ETT"). These sheets reflect further amendments to the Transmission Interconnection Agreement that have occurred since previous amendments were filed on March 2, 2009 in Docket No. ER09-792-000. Only those sheets affected by these most recent amendments are being filed herewith.

Purpose and Background for the Filing

The purpose for this filing is to terminate a point of interconnection and establish three new points of interconnection between the AEPTCC and ETT transmission systems in the Electric Reliability Council of Texas.

On March 17, 2008 the Transmission Interconnection Agreement was accepted by the Commission in Docket No. ER08-466-000 as Service Agreement No. 660 under the Open Access Transmission Service Tariff of the American Electric Power System (the "OATT").

On March 2, 2009 AEPSC filed with the Commission new and revised sheets of the Transmission Interconnection Agreement that were assigned to Docket No. ER09-792-000. These new and revised sheets reflected Amendment No. 1 to the Transmission Interconnection Agreement that was executed by AEPTCC and ETT to provide for the establishment of new points of interconnection at two locations in Kenedy County, Texas. As of this date, Docket No. ER09-792-000 has not been closed by the Commission.

On April 3, 2009 AEPTCC and ETT executed Amendment No. 2 to the Transmission Interconnection Agreement that provided for the termination of one point of interconnection and the establishment of three additional points of interconnection at four locations in Webb County, Texas. Amendment No. 2 of the Transmission Interconnection Agreement provides for 1) the

replacement of existing Facility Schedule Nos. 2 and 3 of the Transmission Interconnection Agreement in their entirety to reflect the termination of one of the four 138 kV points of interconnection at ETT's Laredo North VFT Yard and the establishment of one 69 kV point of interconnection at AEPTCC's Laredo Plant respectively and 2) the addition of Facility Schedule Nos. 10 and 11 to the Transmission Interconnection Agreement that provide for the establishment of points of interconnection in the Laredo-Freer 69 kV and Laredo VFT North-Bruni 138 kV transmission tie lines respectively.

Requested Effective Date

AEPSC requests an effective date of April 3, 2009 for the new and revised sheets of the Transmission Interconnection Agreement filed herewith. This date coincides with the date that ETT and AEPTCC executed Amendment No.2 to the Transmission Interconnection Agreement.

Other Filing Requirements

AEPSC believes that the materials and information provided herewith are adequate to allow the Commission to accept these revised sheets for filing. These revised sheets do not provide for rates or charges so AEPSC is submitting no cost support. There are no specifically assigned facilities. To the extent that AEPSC has not complied with the technical requirements of the Commission's regulations applicable to this filing, AEPSC respectfully requests waiver of such regulations. AEPSC has served a copy of this filing on ETT and the Public Utility Commission of Texas. A copy of this filing is available for public inspection in AEPSC's offices in Tulsa, Oklahoma and Austin, Texas. Correspondence and communication concerning this filing should be addressed as follows:

Kevin F. Duffy
Assistant General Counsel – Regulatory Services
American Electric Power Service Corporation
1 Riverside Plaza
Columbus, Ohio 43215
kfduffy@aep.com

Robert L. Pennybaker
Manager, Transmission and Interconnection Services
American Electric Power Service Corporation
P.O. Box 201
Tulsa, Oklahoma 74102
rlpennybaker@aep.com

This filing consists of an original and five (5) copies each of the following:

1. this transmittal letter; and
2. Enclosure 1 which includes the revised and new sheets of the Transmission Interconnection Agreement that are designated as Second Revised Sheet No. 24, First Revised Sheet Nos. 28 thru 33, and Original Sheet Nos. 55 thru 58 of Service Agreement No. 660 under the OATT.

Questions regarding this filing should be directed to me by phone at (918) 599-2719 or by e-mail at cashields@aep.com.

Respectfully submitted,

A handwritten signature in cursive script that reads "Chris A. Shields".

Chris A. Shields
Principal Regulatory Consultant for AEPSC

Enclosures

cc:	Calvin Crowder - ETT	John Seidensticker - AEPSC
	Kevin Duffy – AEPSC	Lauri White – AEPSC
	Robert Pennybaker – AEPSC	Steven Beaty – AEPSC

ENCLOSURE 1

SCHEDULE 3.1

FACILITY SCHEDULE NO.	LOCATION OF POINT(S) OF INTERCONNECTION (# of Points)	INTERCONNECTION VOLTAGE (KV)	DATE INCLUDED OR EXCLUDED IN THIS OR PREVIOUS INTERCONNECTION AGREEMENT*
1	Laredo VFT South Yard (3)	230 & 138	December 21, 2007
2	Laredo VFT North Yard (3) Amendment No. 1	138	April 3, 2009
3	Laredo Plant/Statcom Yard (2) Amendment No. 1	138 & 69	April 3, 2009
4	North Laredo Switching Station (3)	138	December 21, 2007
5	Hamilton Road (3)	138 & 69	December 21, 2007
6	Falfurrias (2)	138 & 69	December 21, 2007
7	Zapata (5)	138	December 21, 2007
8	Ajo Switching Station (2)	345	January 31, 2009
9	Gulf Wind North (1)	345	January 31, 2009
10	Laredo-Freer Tie Line (1)	69	April 3, 2009
11	Laredo VFT North-Bruni Tie Line (1)	138	April 3, 2009

* These dates do not reflect the date that the Point of Interconnection was established.

FACILITY SCHEDULE NO. 2

Amendment No. 1

1. Name: **Laredo VFT North Yard**
2. Location: The Laredo VFT North Yard is located in Laredo, Texas in Webb County. There are three Points of Interconnection at the Laredo VFT North Yard. The Points of Interconnection are located at the station dead-ends where the jumpers from the station equipment connect to the three terminating transmission lines.
3. Delivery Voltage: 138kV
4. Normal Operation of Interconnection: Closed
5. One-Line Diagram Attached: Yes
6. Facility Ownership Responsibilities of the Parties:

AEP owns the following facilities:

- 138kV line from Laredo VFT North to Laredo Plant #1 circuit, including hardware and insulators for attaching to the ETT station dead-end (connects to disconnect switch 7184)
- 138kV line from Laredo VFT North to Laredo Plant #2, including hardware and insulators for attaching to the ETT station dead-end (connects to disconnect switch 6734)
- 138kV line from Laredo VFT North to North Laredo Switching Station, including hardware and insulators for attaching to the ETT station dead-end (connects to switch 1123)
- 12kV station service circuit between Laredo VFT South Yard and Laredo VFT North Yard
- 48 count duct/OPGW fiber going between VFT North control house and the Laredo Plant control house
- 48 count duct fiber between VFT South control house and the VFT North control house
- Fiber multiplexer communications equipment located in the VFT North control house

ETT leases the Laredo VFT North Yard from AEP and owns all other facilities not mentioned above, including the following:

- all protection and control panels located in the ETT control house
- the 138kV line section between Laredo VFT and Laredo VFT North
- the approximate 16 mile portion of the Laredo VFT North– Bruni 138 kV

transmission line, including right-of-way, from the Laredo VFT North Yard to a structure where it ties to the remaining portion of the transmission line that is owned by AEP

7. Facility Operation Responsibilities of the Parties:

AEP controls and operates all the facilities it owns that are provided for in this Facility Schedule.

AEP or its affiliates coordinate, direct, and perform all control center and field operation activities on the switchyard facilities owned by ETT. These activities shall include, but are not limited to, switching, clearances, and outages for planned maintenance and operations, emergency service restoration, and overall coordination of such activities with ERCOT.

8. Facility Maintenance Responsibilities of the Parties:

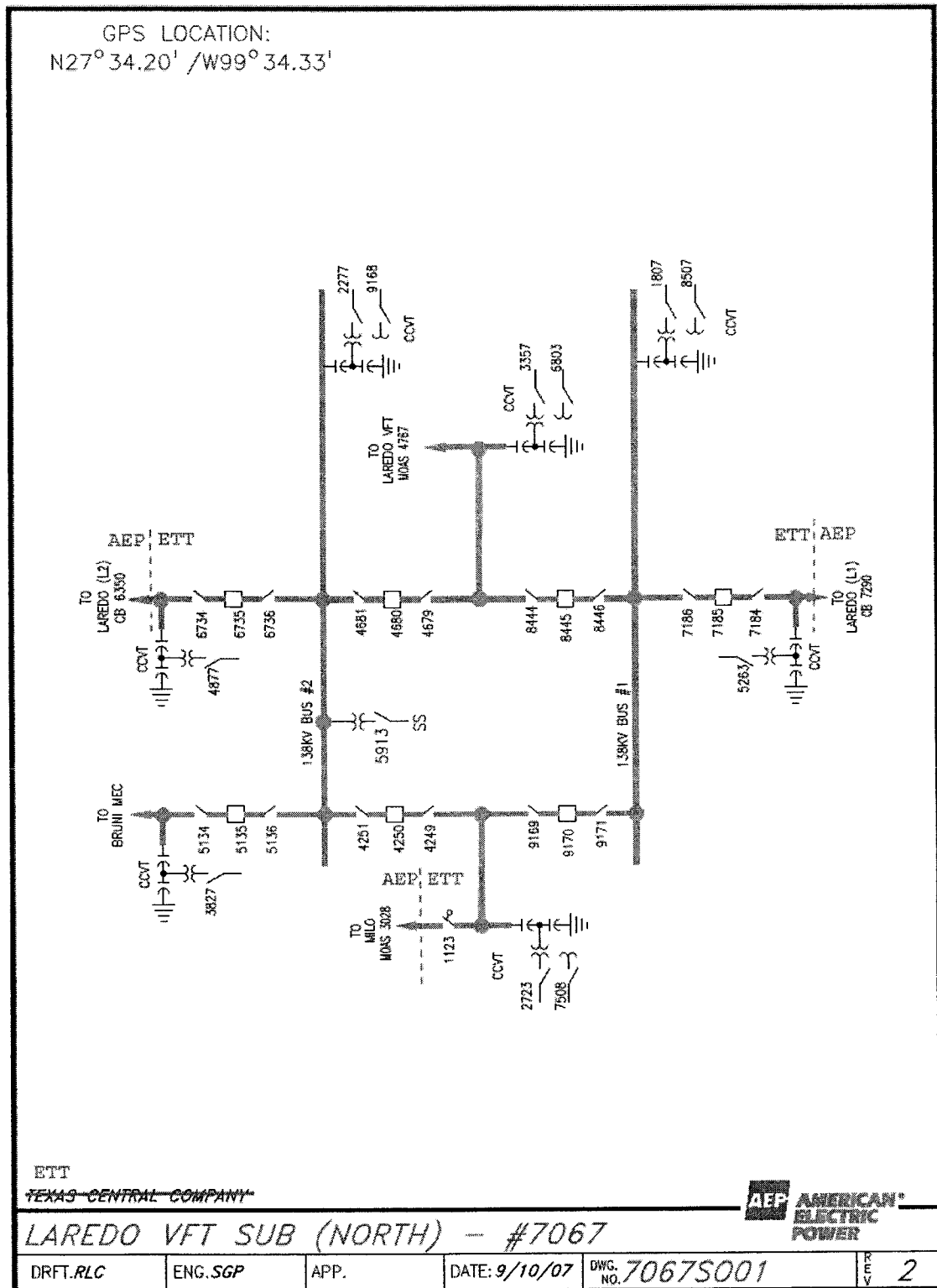
Each Party is responsible for maintenance of the facilities it owns that are provided for in this Facility Schedule. Maintenance of the facilities, including circuit breaker relays, that are owned by one Party that protect the facilities owned by the other Party, will be subject to review and approval by the other Party.

9. Cost Responsibilities of the Parties:

Each Party will be fully responsible for the costs and liabilities related to the facilities it owns.

10. Other Terms and Conditions:

Control cables that connect one Party's equipment to the other Party's equipment will be owned by the Party that owns the equipment being controlled.



Issued by: J. Craig Baker, Senior Vice President
Regulatory Services
Issued on: April 22, 2009

Effective Date: April 3, 2009

FACILITY SCHEDULE NO. 3
Amendment No. 1

1. Name: **Laredo Plant/Statcom Yard**
2. Location: The Laredo Plant and Statcom Yard are located in Laredo, Texas in Webb County. There are two Points of Interconnection at this location. One Point of Interconnection is located where the station equipment jumpers connect to the transmission line serving the Statcom Yard of the Laredo Plant. The other Point of Interconnection is located in the 69 kV Yard of the Laredo Plant where the station equipment jumpers connect to the transmission line from the Freer Substation.
3. Delivery Voltage: 138kV & 69kV
4. Normal Operation of Interconnection: Closed
5. One-Line Diagram Attached: Yes
6. Facility Ownership Responsibilities of the Parties:

ETT leases property in the Statcom Yard from AEP and owns the following facilities:

- one station dead-end structure at the capacitor installation location, including foundations and all attachments
- one set of three phase 138kV free standing current transformers, foundations, stands, etc., including jumpers from this equipment to the AEP line
- 138kV switch 7163, 138kV circuit switcher 5577, 57.6 MVAR capacitor bank #1, foundations, stands, jumpers, etc., and associated protection and control equipment
- 138kV switch 6177, 138kV circuit switcher 4587, 57.6 MVAR capacitor bank #2, foundations, stands, jumpers, etc., and associated protection and control equipment
- the approximate 17 mile portion of the Laredo Plant– Freer 69 kV transmission line, including right-of-way, from the Laredo Plant to a structure where it ties to the remaining portion of the transmission line that is owned by AEP
- hardware and insulators for attaching the Laredo Plant – Freer 69 kV transmission line to the Laredo Plant dead-end structure

AEP owns all other facilities not mentioned above, including:

- two transmission structures for the 3-span line section between the Statcom dead-end structure and the capacitor dead-end structure, including all conductors in this 3-span section, insulators, jumpers and hardware, foundations, etc.
- all fiber multiplexer equipment and fiber paths emanating from this location.

- the conductors from the 69 kV Yard to the Point of Interconnection

7. Facility Operation Responsibilities of the Parties:

AEP controls and operates all the facilities it owns that are provided for in this Facility Schedule.

AEP or its affiliates coordinate, direct, and perform all control center and field operation activities on the switchyard facilities owned by ETT. These activities shall include, but are not limited to, switching, clearances, and outages for planned maintenance and operations, emergency service restoration, and overall coordination of such activities with ERCOT.

8. Facility Maintenance Responsibilities of the Parties:

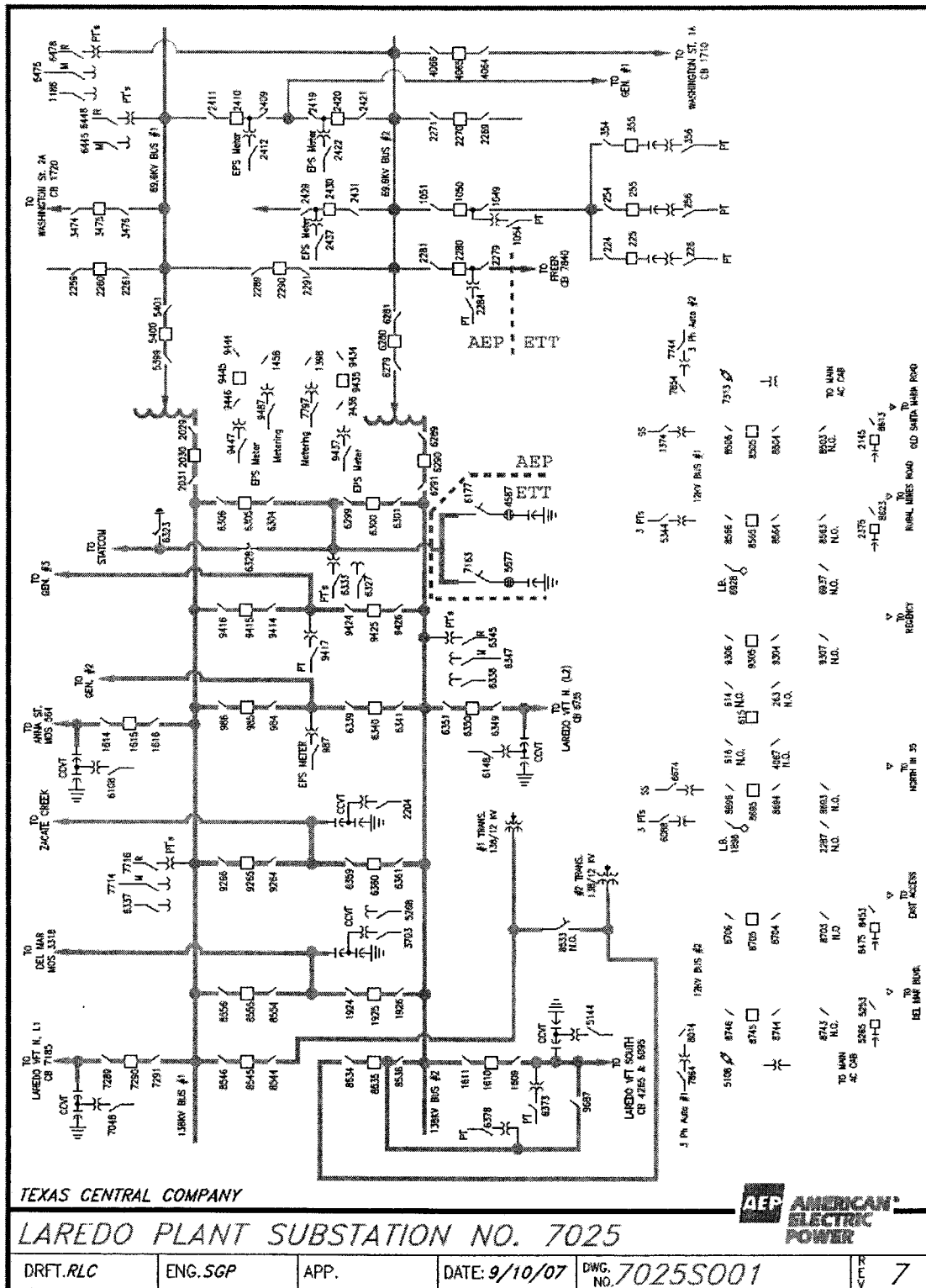
Each Party is responsible for maintenance of the facilities it owns that are provided for in this Facility Schedule. Maintenance of the facilities, including circuit breaker relays, that are owned by one Party that protect the facilities owned by the other Party, will be subject to review and approval by the other Party.

9. Cost Responsibilities of the Parties:

Each Party will be fully responsible for the costs and liabilities related to the facilities it owns.

10. Other Terms and Conditions:

Control cables that connect one Party's equipment to the other Party's equipment will be owned by the Party that owns the equipment being controlled.



FACILITY SCHEDULE NO. 10

1. Name: Laredo - Freer Tie Line
2. Location: The Laredo to Freer 69 kV transmission line is located in Webb County, Texas. It originates at the 69 kV Yard of the Laredo Plant and terminates at the Freer Substation. The Point of Interconnection is located in the transmission line at a structure approximately 17 miles from the Laredo Plant.
3. Delivery Voltage: 69kV
4. Normal Operation of Interconnection: Closed
5. One-Line Diagram Attached: No
6. Facility Ownership Responsibilities of the Parties:

ETT owns the following facilities:

 - the approximate 17 mile portion of the Laredo Plant– Freer 69 kV transmission line, including right-of-way, from the Laredo Plant to the Point of Interconnection
 - the structure, including insulators and hardware, at the Point of Interconnection

AEP owns the following facilities:

 - the portion of the Laredo Plant– Freer 69 kV transmission line, including right-of-way, from the Freer Substation to the Point of Interconnection
7. Facility Operation Responsibilities of the Parties:

AEP controls and operates all the facilities it owns that are provided for in this Facility Schedule.

AEP or its affiliates coordinate, direct, and perform all control center and field operation activities on the facilities owned by ETT. These activities shall include, but are not limited to, switching, clearances, and outages for planned maintenance and operations, emergency service restoration, and overall coordination of such activities with ERCOT.
8. Facility Maintenance Responsibilities of the Parties:

Each Party is responsible for maintenance of the facilities it owns that are provided for in this Facility Schedule.
9. Cost Responsibilities of the Parties:

Each Party will be fully responsible for the costs and liabilities related to the facilities it owns.

10. Other Terms and Conditions: None

FACILITY SCHEDULE NO. 11

1. Name: Laredo VFT North - Bruni Tie Line
2. Location: The Laredo VFT North to Bruni 138 kV transmission line is located in Webb County, Texas. The Point of Interconnection is located in the transmission line at a structure approximately 16 miles from the Laredo VFT North yard of the Laredo Plant.
3. Delivery Voltage: 138kV
4. Normal Operation of Interconnection: Closed
5. One-Line Diagram Attached: No
6. Facility Ownership Responsibilities of the Parties:

ETT owns the following facilities:

- the approximate 16 mile portion of the Laredo VFT North– Bruni 138 kV transmission line, including right-of-way, from the Laredo VFT North yard to the Point of Interconnection
- the structure, including insulators and hardware, at the Point of Interconnection

AEP owns the following facilities:

- the portion of the Laredo VFT North– Bruni 138 kV transmission line, including right-of-way, from the Bruni Substation to the Point of Interconnection

7. Facility Operation Responsibilities of the Parties:

AEP controls and operates all the facilities it owns that are provided for in this Facility Schedule.

AEP or its affiliates coordinate, direct, and perform all control center and field operation activities on the facilities owned by ETT. These activities shall include, but are not limited to, switching, clearances, and outages for planned maintenance and operations, emergency service restoration, and overall coordination of such activities with ERCOT.

8. Facility Maintenance Responsibilities of the Parties:

Each Party is responsible for maintenance of the facilities it owns that are provided for in this Facility Schedule.

9. Cost Responsibilities of the Parties:

Each Party will be fully responsible for the costs and liabilities related to the facilities it owns.

10. Other Terms and Conditions: None