



Control Number: 29165



Item Number: 12

Addendum StartPage: 0



RECEIVED
2004 FEB 19 PM 3:09
PUBLIC UTILITY COMMISSION
FILING CLERK

American Electric Power
400 West 15 Street #650
Austin, TX 78701
jpe:cdp

February 19, 2004

Mr. Larry Reed
Electric Division, Commission Staff
Public Utility Commission of Texas
1701 N. Congress
Austin, TX 78711

Re: Project No. 29165 – Service Quality Report for Reporting Year 2003

Dear Mr. Reed,

Attached please find the Reliability and Continuity of Service Report for the reporting year 2003 for AEP Texas North Company (formerly West Texas Utilities Company). This report is filed in accordance with Substantive Rule Section 25.81, Project 29165.

As reported in several of the prior year Reliability and Continuity Reports, AEP Texas Central Company would like to remind the Commission Staff of the changes in outage reporting which were implemented beginning in May 2000. These changes were implemented to benefit both AEP Texas North Company and the customer by providing more accurate information on each outage, allowing for better prediction of the location of outages and the number of customers affected, and helping to shorten the duration of outages. AEP Texas North Company will also have better information to supporting planning, design, construction, and maintenance of the distribution facilities. More accurate information will be used in targeting maintenance programs based on the key interruption types by geographic area. AEP Texas North Company and its customers are continuing to achieve the benefits of the outage reporting changes.

AEP, along with its merged partner Central and South West (CSW) have been implementing outage reporting process improvements in stages over the last seven years. A report titled "Outage Reporting Process Improvements" has been provided in prior Reliability and Continuity of Service Reports describing the type of changes made and the benefits and impacts provided by these changes. Progress has been made in the implementation of the Distribution Geospatial Information System that has been discussed in prior reports and an update is being provided as Attachment A.

Also, as indicated in prior Reliability and Continuity of Service Reports, Substantive Rule Section 25.52 (f)(1), provides the Commission the ability to approve adjustments if appropriate for improvements such as those described. AEP Texas North Company is appreciative of how the Commission Staff has worked with the AEP Texas companies in Docket No. 25157; *Petition of American Electric Power Company, Inc. for Establishment of Project to Modify Quality of Service Plan and Motion for Interim Stay of Plan Provisions* in establishing the 3-year standard for its SAIFI and SAIDI performance measures in that docket that takes into account the impact from the outage reporting process improvements as provided by Section 25.52 (f) (1).

Sincerely,

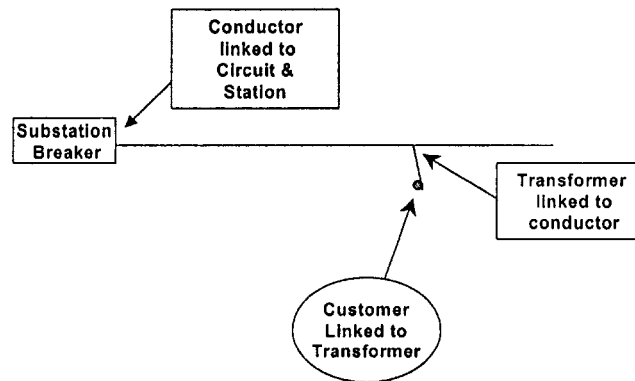
A handwritten signature in black ink, appearing to read "Randal E. Roper". The signature is fluid and cursive, with the first name "Randal" being more prominent than the last name "Roper".

Randal E. Roper
Regulatory Case Manager, AEPSC

Attachment

PROCESS REQUIRED FOR CUSTOMER IDENTIFICATION TO DISTRIBUTION CIRCUITS IN TEXAS

As part of the management of AEP's Distribution Wires Assets, AEP is implementing a DGIS (Distribution Geospatial Information System) using the GE Smallworld platform that provides, on a landbase background, an electrically connected model of distribution wires assets needed to deliver energy from the substation breaker to each energy delivery point (customer service address) off the distribution system.



The diagram above provides a simple visual picture of the data that has to be linked together in order to identify an individual customer to a particular circuit. Where key linkage information is not readily available, an expensive field inventory has to be made to collect the necessary data to provide the customer connectivity links.

This model, as it is interfaced with AEP's Outage Management System, will provide significant benefit through the availability of more accurate Reliability Statistics due to the automation of collection of outage data. To date, approximately 46% of AEP Texas North Company customer delivery points have been associated with circuits. However, the cities of Abilene and San Angelo currently have 89% of delivery points associated to their circuits. Work is continuing for the AEP Texas North Company system, with a completion target by the end of 2005. To date approximately 92+% of AEP Texas Central Company customer delivery points are associated to circuits. Internal work processes are continuing for a few rural areas in the southwest area of AEP Texas Central Company, with a completion target by the end of 2004. For SWEPCO-TX 98% of the customer delivery points are associated to circuits. Once data is collected in the field, it has to be modeled within the DGIS and OMS Smallworld systems so as to properly link the feeder circuit to a physical address and the physical address to in the case of the AEP Texas companies an ESI ID. As indicated before, this process requires an extensive field inventory and considerable amount of work integrating the information into the different systems; therefore, the timing can be considerably affected by the effort required to meet these targets.

§25.52. -- Reliability and Continuity of Service.

<http://www.puc.state.tx.us/rules/subrules/electric/25.52/25.52.doc>

Application. This section applies to all electric utilities as defined by the Public Utility Regulatory Act (PURA) §31.002(6) and all transmission and distribution utilities as defined by PURA §31.002(19). The term "utility" as used in this section shall mean an electric utility and a transmission and distribution utility.

Public Utility Regulatory Act §31.002

<http://www.puc.state.tx.us/rules/statutes/index.cfm>

DEFINITIONS.

The term "Electric utility" does not include a municipally owned utility or an electric cooperative.

Information typed in highlighted cells will appear on following sheets.

	Type Name of Utility in the Cell Below
Utility:	AEP Texas North Company
	Type Total Number of Distribution Feeders in the Cell Below
Feeders:	400
Due:	February 16, 2004
File:	Five Printed Copies and One Electronic Copy of This Excel File
Project:	29165
Address:	Attn: Filing Clerk Public Utility Commission of Texas P.O. Box 13326 Austin, Texas 78711-3326

If you have any questions, please contact:

Larry Reed
Electric Division
Commission Staff

Voice: 512 936 7357

Fax: 512 936 7428

E-mail: <mailto:larry.reed@puc.state.tx.us>

Service Quality Report
To The
Public Utility Commission of Texas
In Accordance With
Substantive Rule §25.81
2003 Reporting Year

AEP Texas North Company

Project 29165

Service Quality Report to the Public Utility Commission of Texas

AEP Texas North Company

System SAIFI	Annual	Jan	Feb	March	April	May	June	July	Aug	Sept	Oct	Nov	Dec
Forced													
2003	0.75	0.03	0.05	0.04	0.05	0.06	0.18	0.03	0.09	0.09	0.07	0.04	0.03
Scheduled													
2003	0.02	0.00	0.00	0.00	0.00	0.01	0.00	0.00	0.00	0.01	0.00	0.00	0.00
Outside Causes													
2003	0.41	0.03	0.00	0.02	0.04	0.06	0.09	0.04	0.06	0.03	0.01	0.00	0.03
Major Events													
2003	0.00	0.00	0.00	0.00	0.00	0.00	0.00	0.00	0.00	0.00	0.00	0.00	0.00
With Storms	1.181												
Without Storms	1.181												

Service Quality Report to the Public Utility Commission of Texas

AEP Texas North Company

System SAIDI	Annual	Jan	Feb	March	April	May	June	July	Aug	Sept	Oct	Nov	Dec
Forced 2003	48.33	2.61	2.52	1.76	2.19	3.68	17.09	3.49	5.04	4.44	2.89	1.28	1.34
Scheduled 2003	0.57	0.00	0.00	0.00	0.06	0.10	0.01	0.17	0.00	0.12	0.10	0.00	0.00
Outside Causes 2003	31.31	1.32	0.23	0.85	4.25	4.18	10.33	2.93	1.38	0.55	0.60	0.03	4.64
Major Events 2003	0.00	0.00	0.00	0.00	0.00	0.00	0.00	0.00	0.00	0.00	0.00	0.00	0.00
With Storms	80.2												
Without Storms	80.2												

Service Quality Report to the Public Utility Commission of Texas

Distribution Feeder Indices for Forced Interruptions

List all Distribution Feeders on Texas System

Total Number of Feeders

With 10 or More Customers

400

Add or Delete Rows as Necessary

AEP Texas North Company

2003 SAIFI Ranking	2002 SAIFI Ranking	Substation Identification	Feeder Identification	Number of Customers	2003 SAIFI Value
1	69	MCCAMEY	2415	180	14.717
2	1	PECOS VALLEY	4080	60	7.517
3	74	TEXON	4345	142	5.423
4	8	MCCAMEY	2855	117	5.368
5	321	MIDWAY LANE	3440	91	5.066
6	62	MCCAMEY	2420	141	4.809
7	118	SA LAKE DR	5865	1,194	4.157
8	141	MCCAMEY	2830	1,030	4.139
9	401	VERNON CITY PLANT	5835	87	4.057
10	new	SHAFTER	50803	64	3.781
11	71	RANKIN	5735	18	3.778
12	187	BOBCAT HILLS	6655	11	3.727
13	21	PRESIDIO	6135	1,088	3.366
14	220	OZONA	3555	34	3.353
15	10	MASTERSON FIELD	2101	177	3.294
16	130	CLYDE	3635	540	3.280
17	24	RIO PECOS	3835	152	3.243
18	22	CLYDE	3630	314	3.210
19	84	AB HARTFORD ST	3815	643	3.196
20	70	BRONTE AMBASSADOR	6650	31	3.161
21	23	CLYDE	1755	106	3.151
22	311	VERNON	4275	670	3.145
23	28	CLYDE	1760	348	3.118
24	41	STAMFORD	4565	937	3.100
25	268	JUNCTION	4335	643	3.098
26	new	MESA VIEW	7045	160	3.088
27	296	VERNON CITY PLANT	5780	689	3.086
28	111	AB OVER STREET 12KV	1645	478	3.084
29	44	SONORA	2045	843	3.071
30	129	SAND ROAD	5290	714	3.070
31	373	VERNON CITY PLANT	5840	86	3.058
32	400	VERNON CITY PLANT	5770	368	3.054
33	377	VERNON CITY PLANT	5785	184	3.054
34	17	AB HARTFORD ST	3820	1,361	3.046
35	135	SPUDDER FLAT	4180	69	3.029
36	35	AB HARTFORD ST	3685	232	3.017
37	2	CLARENDON	4040	718	2.602
38	103	AB OVER STREET 12KV	1635	339	2.563
39	186	SA MATHIS FIELD	4790	33	2.485
40	190	MUNDAY	6715	243	2.481
41	73	AB RAINEY CREEK	4550	359	2.368
42	235	INDIAN MESA	2695	159	2.327
43	230	SA JACKSON ST	4690	429	2.319

Service Quality Report to the Public Utility Commission of Texas

AEP Texas North Company

2003 SAIFI Ranking	2002 SAIFI Ranking	Substation Identification	Feeder Identification	Number of Customers	2003 SAIFI Value
44	42	BRONTE	3590	159	2.302
45	81	BEN FICKLIN	6175	432	2.248
46	159	CHILLICOTHE	4530	553	2.244
47	291	JUNCTION	4340	943	2.178
48	5	PECAN BAYOU	6810	620	2.145
49	258	SA AVENUE N	1695	1,255	2.144
50	131	HASKELL 12KV	3770	680	2.128
51	107	AB REBECCA LANE	2710	287	2.122
52	117	SONORA 138 SUB	4810	874	2.105
53	66	SA MATHIS FIELD	5100	251	2.096
54	398	SWENSON	136	33	2.091
55	27	AB DYESS 2	6335	352	2.088
56	228	AB COUNTRY CLUB	4730	191	2.073
57	209	CHRISTOVAL	6620	466	2.071
58	82	ROCHESTER	3290	62	2.065
59	113	SPUR	417	95	2.063
60	247	BRONTE	3560	131	2.061
61	232	SA JACKSON ST	4695	259	2.058
62	12	DUNEFIELD (N CRANE)	3885	55	2.055
63	264	SA WALNUT ST	3915	555	2.054
64	83	STAMFORD PUMP	3930	37	2.054
65	341	AFTON	2225	59	2.051
66	299	ELDORADO	1845	1,127	2.042
67	262	CAREY	6115	116	2.034
68	381	SPUR	414	265	2.030
69	348	AB COUNTRY CLUB	4725	143	2.028
70	376	SPUR	411	265	2.026
71	351	SA JACKSON ST	4685	2,908	2.020
72	326	WELLINGTON	3700	611	2.018
73	298	CHILLICOTHE	4525	589	1.998
74	360	MCELROY	5165	173	1.983
75	315	AB SHELTON ST	3660	569	1.691
76	99	SA SOUTH	2595	356	1.545
77	140	INDIAN MESA	2690	79	1.506
78	52	TURKEY	2980	361	1.485
79	394	HAMLIN SHELL	6330	22	1.455
80	244	ALBANY	3640	296	1.439
81	215	ELDORADO	2880	65	1.431
82	77	CHILDRESS 69	1480	404	1.399
83	14	AB ELMDALE	4520	70	1.386
84	75	SA COKE ST	3905	122	1.352
85	371	AB ELM CREEK	4780	556	1.349
86	166	TURKEY	3825	342	1.330
87	272	BUSH KNOB	5200	272	1.313
88	19	WELLINGTON	1770	222	1.293
89	106	CROSS PLAINS	2915	542	1.273
90	329	MENARD	3755	936	1.265
91	94	ALPINE 12KV	3875	522	1.255

Service Quality Report to the Public Utility Commission of Texas

AEP Texas North Company

2003 SAIFI Ranking	2002 SAIFI Ranking	Substation Identification	Feeder Identification	Number of Customers	2003 SAIFI Value
92	288	RULE	3396	479	1.240
93	217	COLLEGE HILLS	4840	518	1.222
94	133	AB REBECCA LANE	5550	570	1.218
95	124	AB OIL MILL	3900	617	1.199
96	250	QUANAH	1830	563	1.190
97	316	WOODSON OIL FIELD	30	38	1.184
98	87	COLLEGE HILLS	6145	485	1.175
99	307	ASPERMONT	3380	690	1.171
100	188	ROARING SPRINGS	6155	24	1.167
101	32	PECAN BAYOU	6815	1,140	1.154
102	157	MERTZON (CVEC)	1530	668	1.147
103	353	CHILDRESS 20TH ST	5725	658	1.144
104	46	AB OVER STREET 12KV	3140	553	1.136
105	109	SHAMROCK	144	498	1.135
106	18	PAULANN	6280	717	1.134
107	206	BALLINGER	4395	411	1.134
108	352	AB EAST 12KV	4825	529	1.132
109	261	AB CANYON ROCK	5035	650	1.125
110	312	IRAAN	2055	368	1.122
111	317	TWILIGHT TRAIL	5855	574	1.120
112	275	RIO PECOS	513	42	1.119
113	132	AB OVER STREET 12KV	1840	784	1.117
114	165	SPUDDER FLAT	4175	63	1.111
115	123	THROCKMORTON	3190	674	1.102
116	281	MELVIN	4955	157	1.102
117	48	MERKEL	1895	767	1.096
118	175	IRAAN	2050	455	1.090
119	320	IRAAN	4305	45	1.089
120	368	SA AVENUE N	1975	461	1.085
121	245	MUNDAY	3365	427	1.082
122	231	EDEN	1780	294	1.082
123	98	WELLINGTON	1765	812	1.078
124	6	TUSCOLA	3305	982	1.076
125	254	MENARD	3760	580	1.074
126	386	MCCAMEY	3670	484	1.072
127	142	MEMPHIS	3335	961	1.068
128	121	ROCHESTER	3295	268	1.067
129	91	FT DAVIS	4515	889	1.066
130	395	KNOX CITY	3985	16	1.063
131	181	ONYX REA	3260	98	1.061
132	92	QUANAH	100	49	1.061
133	219	SONORA 138 SUB	4805	591	1.061
134	213	PUTNAM	2129	211	1.057
135	346	BRONTE	4160	390	1.051
136	3	BAIRD	5125	647	1.046
137	76	AB MAPLE ST	5755	696	1.045
138	339	BEN FICKLIN	6180	1,280	1.041
139	89	CHILDRESS 20TH ST	5720	118	1.034

Service Quality Report to the Public Utility Commission of Texas

AEP Texas North Company

2003 SAIFI Ranking	2002 SAIFI Ranking	Substation Identification	Feeder Identification	Number of Customers	2003 SAIFI Value
140	363	AFTON	2310	273	1.033
141	361	BENJAMIN (BEPC)	5680	169	1.030
142	356	AB VOGEL ST	4650	961	1.026
143	59	MUNDAY	2080	732	1.026
144	387	BEN FICKLIN	6185	620	1.026
145	57	AB SHELTON ST	4640	738	1.023
146	285	AFTON	2355	49	1.020
147	163	SPUR	5170	1,095	1.009
148	383	AILEEN	4600	379	1.008
149	153	VERNON	5000	485	1.002
150	184	SA COKE ST	4915	208	1.000
151	399	TRUSCOTT	3845	41	1.000
152	365	EDEN	3195	543	0.978
153	101	PUTNAM	2131	185	0.962
154	168	AB MCMURRY	3235	339	0.876
155	211	AB VOGEL ST	4410	311	0.788
156	200	ALPINE 12KV	6825	1,637	0.677
157	68	SA GRAPE CREEK	5365	140	0.671
158	248	ALBANY	2029	211	0.607
159	4	PECOS VALLEY	4075	20	0.600
160	233	CROSS PLAINS	2920	540	0.598
161	252	VALERA HUMBLE	7015	92	0.565
162	306	FLOMOT	4089	79	0.544
163	310	ALBANY	3540	550	0.544
164	new	PERKINS PROTHO	3180	19	0.526
165	328	ALBANY	3655	634	0.494
166	210	ESTELLINE	3535	115	0.461
167	136	SA SOUTH	4795	219	0.447
168	86	RISING STAR	5075	431	0.441
169	195	FREISS RANCH	4870	59	0.441
170	196	MORAN	2108	192	0.438
171	218	CROSS PLAINS	1795	588	0.429
172	95	SA GRAPE CREEK	4700	1,051	0.425
173	201	THROCKMORTON	2090	55	0.418
174	115	MATADOR	3030	517	0.414
175	216	RISING STAR	5080	675	0.393
176	229	COLLEGE HILLS	4845	341	0.390
177	97	SA EMERSON ST	4630	392	0.362
178	90	CISCO	1680	543	0.355
179	72	SARAGOSA	1590	17	0.353
180	139	BRADY	5015	213	0.352
181	205	AB COUNTRY CLUB	4855	287	0.348
182	364	AB CANYON ROCK	5025	38	0.342
183	266	CISCO	1690	968	0.337
184	253	CHERRY CREEK TAP	5245	12	0.333
185	259	HUMBLE KEMPER	1490	18	0.333
186	37	WINTERS	3765	1,106	0.323
187	202	ROUNDTOP	4490	51	0.314

Service Quality Report to the Public Utility Commission of Texas

AEP Texas North Company

2003 SAIFI Ranking	2002 SAIFI Ranking	Substation Identification	Feeder Identification	Number of Customers	2003 SAIFI Value
188	122	STAMFORD	2815	691	0.307
189	93	CISCO	1685	183	0.301
190	128	SA SOUTHLAND HILLS	5860	150	0.293
191	161	CLARENDON	5005	724	0.287
192	251	AB EAST 12KV	4820	454	0.286
193	391	COLLEGE HILLS	5515	195	0.267
194	148	SA NORTH	3120	1,094	0.264
195	241	HIGHLAND	6385	773	0.260
196	25	AB MCMURRY	3240	302	0.255
197	297	STERLING CITY	1445	752	0.251
198	192	ALPINE 12KV	3155	1,316	0.236
199	9	TRENT	2850	17	0.235
200	270	FT CHADBOURNE	6515	74	0.230
201	189	SA NORTH	3115	225	0.227
202	276	HEDLEY	5870	83	0.217
203	199	AB CANYON ROCK	5030	409	0.213
204	119	AB WALNUT ST	3110	576	0.212
205	110	SHAMROCK	148	1,043	0.208
206	80	POWELL FIELD	2529	15	0.200
207	new	SILVER	4295	10	0.200
208	85	TRENT	4245	275	0.200
209	336	AB HARTFORD ST	3690	162	0.198
210	290	ANSON REA (SEC)	5215	468	0.188
211	224	TALPA ATLANTIC	5180	86	0.186
212	96	TANKERSLY (CVEC)	5260	728	0.183
213	302	RULE	3378	128	0.180
214	263	WAGGONER	5900	39	0.179
215	207	VALENTINE	5590	749	0.178
216	191	AB MAPLE ST	5750	98	0.173
217	53	STAMFORD	6255	503	0.173
218	127	AB SHELTON ST	3060	1,623	0.173
219	269	QUANAH	3975	145	0.172
220	279	FT CHADBOURNE	6520	423	0.170
221	274	SA WALNUT ST	4635	1,499	0.167
222	349	ACME BESTWALL	4150	24	0.167
223	30	ASPR CONTINENTAL	3830	12	0.167
224	144	POWELL FIELD	2528	37	0.162
225	286	MARFA	1900	821	0.162
226	182	SA GRAPE CREEK	5220	742	0.160
227	331	KNOX CITY	3390	228	0.158
228	223	AB VOGEL ST	4560	431	0.158
229	227	CHILDRESS 69	1800	426	0.157
230	39	MARFA	1905	735	0.155
231	208	ROTAN	1860	669	0.151
232	277	SA SOUTHLAND HILLS	5055	595	0.148
233	305	SA SOUTHLAND HILLS	5455	660	0.144
234	214	CROWELL	3490	49	0.143
235	292	VERNON	1520	782	0.141

Service Quality Report to the Public Utility Commission of Texas

AEP Texas North Company

2003 SAIFI Ranking	2002 SAIFI Ranking	Substation Identification	Feeder Identification	Number of Customers	2003 SAIFI Value
236	237	CISCO	1675	854	0.139
237	323	MILES	4670	501	0.136
238	179	HAROLD	3055	38	0.132
239	29	MERTZON (CVEC)	2905	221	0.131
240	301	VERHALEN	4465	23	0.130
241	149	PEACOCK	43	47	0.128
242	372	AILEEN	6435	470	0.121
243	13	HAWLEY	4455	581	0.120
244	314	KNOX CITY	3300	599	0.120
245	257	EDITH HUMBLE	6170	117	0.120
246	221	VERNON	1750	92	0.120
247	284	HAMLIN	3775	336	0.119
248	255	PADUCAH CITY	1930	557	0.118
249	120	SAND ROAD	5655	699	0.116
250	146	SA LAKE DR	5880	1,661	0.116
251	322	OZONA	3810	854	0.114
252	234	SA WALNUT ST	3920	283	0.113
253	104	ROBERT LEE	4120	302	0.113
254	138	SA COKE ST	4910	1,001	0.112
255	303	SARAGOSA	1552	833	0.112
256	105	AB ELM CREEK	5045	575	0.111
257	289	HIGHLAND	6370	586	0.109
258	193	ROBY	3795	84	0.107
259	309	SANTA ANNA	3420	281	0.107
260	226	PAINT ROCK	5235	197	0.107
261	280	WINTERS	2113	973	0.105
262	340	QUANAH	3530	554	0.103
263	271	FT DAVIS	3345	477	0.103
264	240	OZONA	4185	1,137	0.101
265	330	BALLINGER	4370	910	0.100
266	61	SA EMERSON ST	4620	972	0.098
267	344	SA AVENUE N	1655	575	0.097
268	369	ROWENA	4480	143	0.091
269	222	AB MCMURRY	3245	840	0.089
270	260	CHRISTOVAL	6615	848	0.085
271	155	HASKELL 12KV	3495	1,367	0.083
272	366	SA JACKSON ST	4250	226	0.080
273	156	CEDAR GAP (TEC)	4115	38	0.079
274	160	AB OIL MILL	2780	431	0.077
275	212	EOLA	4950	249	0.076
276	40	TUSCOLA	3730	700	0.076
277	64	MUNDAY REA (BKEC)	2015	53	0.075
278	100	SA NORTH	3130	398	0.075
279	203	ALPINE 12KV	3160	1,259	0.075
280	167	ABILENE PLANT	1565	269	0.074
281	79	ASPR CONTINENTAL	4800	27	0.074
282	355	RANKIN	6400	297	0.074
283	126	MEMPHIS	3025	396	0.073

Service Quality Report to the Public Utility Commission of Texas

AEP Texas North Company

2003 SAIFI Ranking	2002 SAIFI Ranking	Substation Identification	Feeder Identification	Number of Customers	2003 SAIFI Value
284	172	SHEFFIELD	6430	220	0.073
285	38	TWILIGHT TRAIL	4290	1,657	0.070
286	114	SA SOUTH	3990	336	0.068
287	88	AB SHELTON ST	3040	385	0.068
288	239	ABILENE PLANT	1575	283	0.067
289	304	AB EAST 12KV	4830	752	0.066
290	249	HAMLIN	3270	1,008	0.066
291	137	SAND ROAD	5195	613	0.065
292	283	AB SHELTON ST	3050	1,206	0.064
293	173	ABILENE PLANT	1735	143	0.063
294	384	COLLEGE HILLS	5520	223	0.063
295	397	SA CONCHO	1725	32	0.063
296	154	SA SOUTH	3995	583	0.062
297	147	ROBERT LEE	4125	723	0.061
298	313	JAYTON	6125	364	0.060
299	58	BIG LAKE	4655	1,175	0.060
300	63	ABILENE PLANT	1580	83	0.060
301	145	SA JACKSON ST	4260	733	0.060
302	243	VERNON	3340	368	0.060
303	55	ROTAN	1865	343	0.058
304	183	SA EMERSON ST	4625	223	0.058
305	236	MERKEL	1890	572	0.058
306	242	SA CONCHO	1705	299	0.057
307	333	AB MCMURRY	4355	1,114	0.057
308	293	AB ELM CREEK	4745	687	0.055
309	308	CHILDRESS 69	2800	676	0.055
310	65	SA LAKE DR	6030	1,012	0.052
311	158	CHILDRESS 69	4865	847	0.052
312	325	PADUCAH CITY	1935	424	0.052
313	16	BAIRD	5120	409	0.051
314	354	SA NORTH	3125	1,600	0.051
315	295	SA SOUTHLAND HILLS	5050	834	0.050
316	294	SA AVENUE N	1730	782	0.050
317	36	SAND ROAD	5295	405	0.049
318	194	ABILENE PLANT	1570	265	0.049
319	267	AB RAINEY CREEK	4220	125	0.048
320	49	STAMFORD	2835	295	0.047
321	347	WYLIE	2675	845	0.047
322	51	AB MCMURRY	4510	708	0.047
323	337	SA JACKSON ST	4265	1,215	0.046
324	50	AB DYESS 1	1775	284	0.046
325	357	ANSON 12KV	6635	558	0.045
326	300	MORAN	2107	404	0.045
327	378	AB RAINEY CREEK	4225	231	0.043
328	278	SA WALNUT ST	3925	697	0.043
329	265	WYLIE	2665	855	0.040
330	204	SA CONCHO	1700	205	0.039
331	332	WYLIE	6340	1,217	0.039

Service Quality Report to the Public Utility Commission of Texas

AEP Texas North Company

2003 SAIFI Ranking	2002 SAIFI Ranking	Substation Identification	Feeder Identification	Number of Customers	2003 SAIFI Value
332	362	WEINERT	6490	132	0.038
333	324	ANSON 12KV	6630	397	0.038
334	350	AB SHELTON ST	3145	882	0.037
335	374	AB COUNTRY CLUB	4735	478	0.036
336	152	AB MCMURRY	4360	1,198	0.033
337	338	AB VOGEL ST	4405	672	0.031
338	47	AB ELM CREEK	4775	566	0.030
339	342	BALLINGER	4375	1,268	0.030
340	150	HEDLEY	5845	305	0.030
341	171	AB SHELTON ST	3045	446	0.029
342	273	KIRKLAND	3545	37	0.027
343	15	PRESIDIO	4540	1,046	0.027
344	151	QUANAH	3100	766	0.026
345	345	BARNHART	3725	117	0.026
346	180	GIRARD	6260	39	0.026
347	134	HAROLD	1495	39	0.026
348	343	BRADSHAW (CLIMAX)	11301	41	0.024
349	7	MATADOR	3090	254	0.024
350	56	BIG LAKE	4665	424	0.024
351	389	GRAYBACK	3315	304	0.023
352	60	AB ELM CREEK	1815	479	0.023
353	116	AB RAINEY CREEK	4270	749	0.023
354	385	HIGHLAND	6380	2,250	0.022
355	197	SA CONCHO	1715	292	0.021
356	143	SUN VALLEY	4300	98	0.020
357	379	TWILIGHT TRAIL	3150	459	0.020
358	102	ALPINE 12KV	6820	720	0.018
359	54	PAULANN	6310	613	0.018
360	327	AILEEN	4605	394	0.018
361	287	SANTA ANNA	3415	507	0.018
362	34	SHAMROCK	1835	71	0.014
363	164	RANKIN	6405	335	0.012
364	319	CROWELL	3980	722	0.011
365	359	TWILIGHT TRAIL	4285	1,328	0.011
366	26	PLASTERCO (MWEC)	2720	194	0.010
367	177	AB OIL MILL	3895	292	0.010
368	169	AB WALNUT ST	3785	1,752	0.010
369	125	HIGHLAND	6375	199	0.010
370	20	CEDAR GAP (TEC)	5445	102	0.010
371	380	SA WALNUT ST	3910	514	0.010
372	388	COLLEGE HILLS	4835	312	0.010
373	318	AB ELM CREEK	1810	1,376	0.009
374	334	SA SOUTH	3500	939	0.009
375	382	AB REBECCA LANE	6915	948	0.007
376	174	SA EMERSON ST	4860	417	0.007
377	176	ABILENE PLANT	3175	281	0.007
378	112	SA SOUTH	4255	182	0.005
379	246	ABILENE PLANT	1910	735	0.005

Service Quality Report to the Public Utility Commission of Texas

AEP Texas North Company

2003 SAIFI Ranking	2002 SAIFI Ranking	Substation Identification	Feeder Identification	Number of Customers	2003 SAIFI Value
380	225	AB REBECCA LANE	5555	951	0.005
381	78	AB SHELTON ST	3435	320	0.003
382	282	ROBY	2276	334	0.003
383	370	AB EAST 12KV	5760	1,034	0.002
384	170	AB MCMURRY	4350	1,086	0.002
385	358	AB ELM CREEK	1825	734	0.001
386	33	AB ELM CREEK	1820	33	0.000
387	new	AB ELMDALE	4085	18	0.000
388	178	AB WALNUT ST	3445	752	0.000
389	390	ABILENE PLANT	1740	174	0.000
390	11	ABILENE PLANT	1915	88	0.000
391	375	ASPERMONT	6640	89	0.000
392	238	BEST ATLANTIC	ATLB	23	0.000
393	new	BRYANTS RANCH	5104	10	0.000
394	256	CORINTH	2590	27	0.000
395	67	CROCKETT HEIGHTS	4668	85	0.000
396	392	CROSS PLAINS	5130	58	0.000
397	43	GRAYBACK	3320	28	0.000
398	335	HASKELL 12KV	5240	53	0.000
399	31	PAULANN	6285	63	0.000
400	402	WEINERT	3363	132	0.000

Service Quality Report to the Public Utility Commission of Texas

Distribution Feeder Indices for Forced Interruptions

List all Distribution Feeders on Texas System

Total Number of Feeders

With 10 or More Customers

400

Add or Delete Rows as Necessary

AEP Texas North Company

2003 SAIDI Ranking	2002 SAIDI Ranking	Substation Identification	Feeder Identification	Number of Customers	2003 SAIDI Value
1	1	PECOS VALLEY	4080	60	1,482.7
2	62	MCCAMEY	2415	180	1,228.6
3	76	RANKIN	5735	18	1,078.7
4	28	TEXON	4345	142	814.9
5	281	MIDWAY LANE	3440	91	712.9
6	279	JUNCTION	4335	643	606.8
7	69	BRONTE AMBASSADOR	6650	31	559.5
8	199	SPUDDER FLAT	4180	69	528.7
9	72	BOBCAT HILLS	6655	11	507.3
10	6	MASTERTON FIELD	2101	177	500.0
11	134	CHRISTOVAL	6620	466	404.7
12	244	OZONA	3555	34	389.1
13	324	JUNCTION	4340	943	384.5
14	106	SA MATHIS FIELD	4790	33	382.6
15	26	SA MATHIS FIELD	5100	251	350.2
16	42	MCCAMEY	2855	117	346.4
17	229	EDEN	1780	294	346.3
18	359	EDEN	3195	543	331.2
19	330	MCELROY	5165	173	326.1
20	247	TURKEY	3825	342	309.4
21	16	CLARENDON	4040	718	299.3
22	195	PUTNAM	2129	211	293.5
23	394	HAMLIN SHELL	6330	22	284.5
24	49	INDIAN MESA	2690	79	281.4
25	264	MELVIN	4955	157	275.8
26	25	RIO PECOS	3835	152	265.1
27	317	AFTON	2225	59	261.5
28	91	PRESIDIO	6135	1,088	246.4
29	60	STAMFORD PUMP	3930	37	242.6
30	new	MESA VIEW	7045	160	235.1
31	11	DUNEFIELD (N CRANE)	3885	55	231.4
32	238	BUSH KNOB	5200	272	228.2
33	29	MCCAMEY	2420	141	224.1
34	131	SA LAKE DR	5865	1,194	223.6
35	290	AFTON	2355	49	221.2
36	97	ROCHESTER	3295	268	212.0
37	252	SA JACKSON ST	4690	429	199.9
38	174	INDIAN MESA	2695	159	183.8
39	83	SA SOUTH	2595	356	183.2
40	282	BRONTE	3560	131	176.7
41	54	SPUDDER FLAT	4175	63	175.7
42	81	STAMFORD	4565	937	174.0
43	41	PAULANN	6280	717	170.2

Service Quality Report to the Public Utility Commission of Texas

AEP Texas North Company

2003 SAIDI Ranking	2002 SAIDI Ranking	Substation Identification	Feeder Identification	Number of Customers	2003 SAIDI Value
44	325	CHILLICOTHE	4525	589	169.9
45	276	SA AVENUE N	1695	1,255	167.5
46	71	ROCHESTER	3290	62	165.5
47	226	ROARING SPRINGS	6155	24	163.3
48	401	VERNON CITY PLANT	5835	87	158.0
49	15	BEN FICKLIN	6175	432	151.6
50	new	SHAFTER	50803	64	151.0
51	40	CROSS PLAINS	2915	542	148.5
52	267	RULE	3396	479	146.3
53	30	CLYDE	1755	106	143.0
54	177	SONORA 138 SUB	4810	874	139.8
55	129	TURKEY	2980	361	139.5
56	24	ALPINE 12KV	3875	522	138.0
57	51	SA GRAPE CREEK	5365	140	136.3
58	189	MENARD	3760	580	127.6
59	36	CLYDE	3630	314	123.9
60	321	VERNON	4275	670	123.7
61	96	AB OVER STREET 12KV	1635	339	120.1
62	398	SWENSON	136	33	118.5
63	43	PUTNAM	2131	185	117.6
64	358	BENJAMIN (BEPC)	5680	169	113.5
65	171	SAND ROAD	5290	714	112.9
66	165	CLYDE	3635	540	112.8
67	124	CHILDRESS 69	1480	404	107.1
68	179	MUNDAY	6715	243	106.6
69	61	SONORA	2045	843	104.7
70	139	AB OIL MILL	3900	617	104.7
71	329	IRAAN	2055	368	104.4
72	193	CHILLICOTHE	4530	553	99.7
73	220	IRAAN	2050	455	98.1
74	128	SA COKE ST	3905	122	96.4
75	354	AB EAST 12KV	4825	529	94.6
76	231	CAREY	6115	116	94.5
77	114	QUANAH	100	49	93.4
78	38	CLYDE	1760	348	92.2
79	223	MERTZON (CVEC)	1530	668	91.4
80	362	IRAAN	4305	45	90.2
81	200	SA SOUTH	4795	219	88.7
82	84	BRONTE	3590	159	88.7
83	349	MENARD	3755	936	88.2
84	221	SA WALNUT ST	3915	555	88.0
85	138	AB OVER STREET 12KV	1645	478	87.6
86	216	AB COUNTRY CLUB	4730	191	85.4
87	395	KNOX CITY	3985	16	84.9
88	283	VERNON CITY PLANT	5780	689	84.9
89	136	THROCKMORTON	3190	674	84.5
90	375	VERNON CITY PLANT	5840	86	84.0
91	400	VERNON CITY PLANT	5770	368	83.8

Service Quality Report to the Public Utility Commission of Texas

AEP Texas North Company

2003 SAIDI Ranking	2002 SAIDI Ranking	Substation Identification	Feeder Identification	Number of Customers	2003 SAIDI Value
92	371	VERNON CITY PLANT	5785	184	83.8
93	339	WELLINGTON	3700	611	83.3
94	2	PECOS VALLEY	4075	20	82.7
95	399	TRUSCOTT	3845	41	82.0
96	230	BALLINGER	4395	411	81.8
97	20	AB DYESS 2	6335	352	81.7
98	4	AB ELMDALE	4520	70	80.8
99	56	COLLEGE HILLS	6145	485	80.2
100	173	SHAMROCK	144	498	80.0
101	385	AILEEN	4600	379	79.5
102	151	MCCAMEY	2830	1,030	77.8
103	50	AB HARTFORD ST	3820	1,361	74.5
104	22	PECAN BAYOU	6810	620	73.7
105	376	AB ELM CREEK	4780	556	73.7
106	93	AB RAINEY CREEK	4550	359	73.7
107	205	COLLEGE HILLS	4840	518	73.3
108	353	AB CANYON ROCK	5025	38	71.9
109	68	SA SOUTHLAND HILLS	5860	150	70.6
110	31	BAIRD	5125	647	69.0
111	308	FLOMOT	4089	79	66.5
112	44	AB REBECCA LANE	2710	287	66.4
113	343	ELDORADO	1845	1,127	65.2
114	268	FT CHADBOURNE	6520	423	64.9
115	156	SPUR	417	95	63.0
116	312	MUNDAY	3365	427	62.5
117	299	AB SHELTON ST	3660	569	61.9
118	386	BEN FICKLIN	6185	620	61.4
119	307	BEN FICKLIN	6180	1,280	60.7
120	80	WINTERS	3765	1,106	60.6
121	141	AB REBECCA LANE	5550	570	59.8
122	284	WOODSON OIL FIELD	30	38	59.7
123	178	SA COKE ST	4915	208	58.0
124	147	AB HARTFORD ST	3815	643	56.8
125	294	TWILIGHT TRAIL	5855	574	56.0
126	117	AB HARTFORD ST	3685	232	55.2
127	303	HUMBLE KEMPER	1490	18	54.6
128	368	AB VOGEL ST	4650	961	54.1
129	243	RIO PECOS	513	42	53.8
130	350	AB COUNTRY CLUB	4725	143	53.5
131	162	HASKELL 12KV	3770	680	52.5
132	65	SA GRAPE CREEK	4700	1,051	52.2
133	19	AB OVER STREET 12KV	3140	553	51.9
134	58	MERKEL	1895	767	51.8
135	155	SPUR	5170	1,095	51.1
136	384	SPUR	411	265	50.1
137	202	VALERA HUMBLE	7015	92	49.4
138	278	ELDORADO	2880	65	49.0
139	213	SA JACKSON ST	4695	259	48.3

Service Quality Report to the Public Utility Commission of Texas

AEP Texas North Company

2003 SAIDI Ranking	2002 SAIDI Ranking	Substation Identification	Feeder Identification	Number of Customers	2003 SAIDI Value
140	132	AB OVER STREET 12KV	1840	784	48.1
141	389	SPUR	414	265	47.0
142	204	AB VOGEL ST	4410	311	46.5
143	108	CHILDRESS 20TH ST	5720	118	46.2
144	210	CROSS PLAINS	2920	540	46.0
145	85	WELLINGTON	1765	812	45.2
146	266	ALBANY	3640	296	44.2
147	18	TUSCOLA	3305	982	43.5
148	66	SARAGOSA	1590	17	43.4
149	235	AB CANYON ROCK	5035	650	43.1
150	381	SA AVENUE N	1975	461	42.5
151	82	SA NORTH	3120	1,094	42.1
152	32	SHAMROCK	148	1,043	42.1
153	39	SA EMERSON ST	4630	392	41.0
154	122	MORAN	2108	192	39.7
155	388	MCCAMEY	3670	484	38.8
156	101	FREISS RANCH	4870	59	37.9
157	159	STAMFORD	2815	691	37.6
158	135	ESTELLINE	3535	115	37.0
159	new	PERKINS PROTHO	3180	19	36.1
160	332	SA JACKSON ST	4685	2,908	36.0
161	225	ALPINE 12KV	6825	1,637	35.4
162	217	VERNON	5000	485	35.1
163	249	ALBANY	2029	211	35.1
164	92	SA GRAPE CREEK	5220	742	34.6
165	241	CHERRY CREEK TAP	5245	12	34.3
166	98	MUNDAY	2080	732	34.1
167	126	AB MCMURRY	3235	339	32.9
168	33	PECAN BAYOU	6815	1,140	32.9
169	153	BRADY	5015	213	31.4
170	59	TANKERSLY (CVEC)	5260	728	30.9
171	219	EDITH HUMBLE	6170	117	30.3
172	391	COLLEGE HILLS	5515	195	28.8
173	236	COLLEGE HILLS	4845	341	27.8
174	196	SONORA 138 SUB	4805	591	27.8
175	224	FT CHADBOURNE	6515	74	27.3
176	7	WELLINGTON	1770	222	26.7
177	306	AB HARTFORD ST	3690	162	26.5
178	206	HIGHLAND	6385	773	26.4
179	90	POWELL FIELD	2529	15	26.1
180	127	FT DAVIS	4515	889	25.9
181	355	BRONTE	4160	390	25.7
182	176	CLARENDON	5005	724	25.5
183	183	AB CANYON ROCK	5030	409	25.4
184	175	MATADOR	3030	517	24.7
185	163	THROCKMORTON	2090	55	24.5
186	146	RISING STAR	5075	431	24.5
187	239	RISING STAR	5080	675	24.4

Service Quality Report to the Public Utility Commission of Texas

AEP Texas North Company

2003 SAIDI Ranking	2002 SAIDI Ranking	Substation Identification	Feeder Identification	Number of Customers	2003 SAIDI Value
188	145	CISCO	1685	183	24.3
189	318	ASPERMONT	3380	690	23.8
190	95	MEMPHIS	3335	961	23.7
191	255	CROSS PLAINS	1795	588	23.6
192	313	ALBANY	3540	550	23.3
193	130	CISCO	1680	543	22.8
194	87	TRENT	4245	275	22.1
195	73	AB MAPLE ST	5755	696	22.1
196	212	ROUNDTOP	4490	51	21.9
197	250	QUANAH	1830	563	21.6
198	280	SA WALNUT ST	4635	1,499	21.3
199	133	SA NORTH	3115	225	21.3
200	119	POWELL FIELD	2528	37	20.8
201	new	SILVER	4295	10	19.7
202	125	ALPINE 12KV	3155	1,316	19.2
203	337	AFTON	2310	273	18.3
204	257	CISCO	1690	968	18.3
205	197	CHRISTOVAL	6615	848	18.2
206	322	ALBANY	3655	634	17.9
207	269	AB EAST 12KV	4820	454	17.8
208	120	MERTZON (CVEC)	2905	221	17.7
209	342	CHILDRESS 20TH ST	5725	658	17.4
210	209	MILES	4670	501	16.3
211	261	QUANAH	3975	145	15.8
212	293	SA SOUTHLAND HILLS	5455	660	15.8
213	161	SA JACKSON ST	4260	733	15.8
214	309	OZONA	3810	854	15.6
215	256	SA SOUTHLAND HILLS	5055	595	15.3
216	148	AB WALNUT ST	3110	576	15.0
217	185	VALENTINE	5590	749	14.8
218	14	TRENT	2850	17	14.5
219	263	HEDLEY	5870	83	14.4
220	301	STERLING CITY	1445	752	14.3
221	186	AB COUNTRY CLUB	4855	287	14.3
222	211	EOLA	4950	249	12.9
223	228	PAINT ROCK	5235	197	12.4
224	34	ASPR CONTINENTAL	3830	12	12.1
225	319	SARAGOSA	1552	833	12.0
226	262	CISCO	1675	854	11.9
227	365	ACME BESTWALL	4150	24	11.8
228	344	KNOX CITY	3300	599	11.3
229	154	SA LAKE DR	5880	1,661	11.2
230	116	AB MAPLE ST	5750	98	10.9
231	48	AB MCMURRY	3240	302	10.9
232	203	SA WALNUT ST	3920	283	10.8
233	17	HAWLEY	4455	581	10.7
234	300	ANSON REA (SEC)	5215	468	10.6
235	198	AB VOGEL ST	4560	431	10.0

Service Quality Report to the Public Utility Commission of Texas

AEP Texas North Company

2003 SAIDI Ranking	2002 SAIDI Ranking	Substation Identification	Feeder Identification	Number of Customers	2003 SAIDI Value
236	188	SA SOUTH	3995	583	10.0
237	111	CEDAR GAP (TEC)	4115	38	9.6
238	105	SHEFFIELD	6430	220	9.6
239	137	SA COKE ST	4910	1,001	9.5
240	320	MARFA	1900	821	9.4
241	292	HAMLIN	3775	336	9.2
242	123	AB SHELTON ST	4640	738	9.1
243	331	WYLIE	2675	845	9.1
244	100	AB SHELTON ST	3040	385	9.0
245	259	FT DAVIS	3345	477	8.9
246	184	MARFA	1905	735	8.5
247	345	KNOX CITY	3390	228	8.4
248	75	STAMFORD	6255	503	8.4
249	311	VERHALEN	4465	23	8.3
250	94	MEMPHIS	3025	396	8.3
251	233	OZONA	4185	1,137	8.3
252	168	SAND ROAD	5655	699	8.2
253	382	COLLEGE HILLS	5520	223	8.2
254	289	SA SOUTHLAND HILLS	5050	834	8.0
255	167	TALPA ATLANTIC	5180	86	8.0
256	288	ROTAN	1860	669	7.9
257	27	PEACOCK	43	47	7.9
258	64	ONYX REA	3260	98	7.9
259	35	SA EMERSON ST	4620	972	7.6
260	374	AILEEN	6435	470	7.3
261	291	ABILENE PLANT	1565	269	7.3
262	316	WINTERS	2113	973	7.3
263	274	CHILDRESS 69	1800	426	7.2
264	103	AB SHELTON ST	3060	1,623	7.1
265	334	VERNON	1520	782	6.9
266	215	CROWELL	3490	49	6.9
267	9	TWILIGHT TRAIL	4290	1,657	6.7
268	245	HAROLD	3055	38	6.6
269	237	ABILENE PLANT	1735	143	6.5
270	275	ABILENE PLANT	1575	283	6.5
271	333	SA NORTH	3125	1,600	6.5
272	351	BALLINGER	4370	910	6.2
273	273	JAYTON	6125	364	6.1
274	360	ANSON 12KV	6635	558	6.1
275	298	VERNON	1750	92	6.0
276	367	SA JACKSON ST	4250	226	5.9
277	254	SA CONCHO	1705	299	5.9
278	112	ROTAN	1865	343	5.6
279	379	HIGHLAND	6380	2,250	5.6
280	304	AB RAINEY CREEK	4220	125	5.5
281	88	ROBERT LEE	4120	302	5.4
282	302	PADUCAH CITY	1930	557	5.4
283	341	SA AVENUE N	1655	575	5.4

Service Quality Report to the Public Utility Commission of Texas

AEP Texas North Company

2003 SAIDI Ranking	2002 SAIDI Ranking	Substation Identification	Feeder Identification	Number of Customers	2003 SAIDI Value
284	246	WAGGONER	5900	39	5.4
285	172	ALPINE 12KV	3160	1,259	5.2
286	260	HIGHLAND	6370	586	5.1
287	352	RANKIN	6400	297	5.0
288	170	SAND ROAD	5195	613	4.8
289	310	QUANAH	3530	554	4.8
290	144	CHILDRESS 69	4865	847	4.7
291	380	ROWENA	4480	143	4.7
292	287	MORAN	2107	404	4.6
293	74	ASPR CONTINENTAL	4800	27	4.6
294	169	HASKELL 12KV	3495	1,367	4.5
295	142	SA NORTH	3130	398	4.4
296	347	PADUCAH CITY	1935	424	4.4
297	227	AB MCMURRY	3245	840	4.3
298	356	SANTA ANNA	3420	281	4.3
299	86	MUNDAY REA (BKEC)	2015	53	4.2
300	296	SA JACKSON ST	4265	1,215	4.2
301	180	ROBY	3795	84	4.0
302	46	TUSCOLA	3730	700	3.9
303	190	AB SHELTON ST	3045	446	3.8
304	373	AB RAINEY CREEK	4225	231	3.8
305	327	AB EAST 12KV	4830	752	3.8
306	361	BRADSHAW (CLIMAX)	11301	41	3.7
307	295	AB ELM CREEK	4745	687	3.7
308	326	RULE	3378	128	3.7
309	13	SUN VALLEY	4300	98	3.7
310	270	AB MCMURRY	4355	1,114	3.6
311	166	ROBERT LEE	4125	723	3.5
312	297	CHILDRESS 69	2800	676	3.5
313	253	WYLIE	2665	855	3.4
314	10	BIG LAKE	4655	1,175	3.3
315	277	AB SHELTON ST	3050	1,206	3.3
316	314	BARNHART	3725	117	3.3
317	240	SA WALNUT ST	3925	697	3.2
318	366	GRAYBACK	3315	304	3.1
319	305	HAMLIN	3270	1,008	3.1
320	113	SA SOUTH	3990	336	3.1
321	192	ABILENE PLANT	1570	265	3.0
322	140	ABILENE PLANT	1580	83	3.0
323	121	SAND ROAD	5295	405	3.0
324	52	SA EMERSON ST	4625	223	2.9
325	397	SA CONCHO	1725	32	2.9
326	150	AB OIL MILL	2780	431	2.9
327	335	WYLIE	6340	1,217	2.8
328	340	ANSON 12KV	6630	397	2.8
329	23	AB MCMURRY	4510	708	2.8
330	107	BAIRD	5120	409	2.7
331	149	AB ELM CREEK	5045	575	2.7

Service Quality Report to the Public Utility Commission of Texas

AEP Texas North Company

2003 SAIDI Ranking	2002 SAIDI Ranking	Substation Identification	Feeder Identification	Number of Customers	2003 SAIDI Value
332	348	AB VOGEL ST	4405	672	2.7
333	187	HEDLEY	5845	305	2.7
334	272	VERNON	3340	368	2.6
335	218	MERKEL	1890	572	2.6
336	336	AB SHELTON ST	3145	882	2.6
337	207	QUANAH	3100	766	2.4
338	47	AB DYESS 1	1775	284	2.4
339	234	SA CONCHO	1700	205	2.2
340	265	SA AVENUE N	1730	782	2.2
341	201	SA LAKE DR	6030	1,012	2.1
342	143	AB ELM CREEK	4775	566	2.0
343	372	AB COUNTRY CLUB	4735	478	2.0
344	370	TWILIGHT TRAIL	3150	459	1.9
345	12	BIG LAKE	4665	424	1.8
346	346	BALLINGER	4375	1,268	1.8
347	67	GIRARD	6260	39	1.8
348	77	AB ELM CREEK	1815	479	1.7
349	323	CROWELL	3980	722	1.7
350	78	STAMFORD	2835	295	1.6
351	8	PLASTERCO (MWEC)	2720	194	1.6
352	364	WEINERT	6490	132	1.5
353	160	AB MCMURRY	4360	1,198	1.5
354	55	PRESIDIO	4540	1,046	1.4
355	182	RANKIN	6405	335	1.3
356	115	SA SOUTH	4255	182	1.2
357	158	AB RAINEY CREEK	4270	749	1.2
358	79	PAULANN	6310	613	1.1
359	377	AB REBECCA LANE	6915	948	1.1
360	89	MATADOR	3090	254	1.1
361	118	HAROLD	1495	39	1.0
362	248	AB REBECCA LANE	5555	951	1.0
363	383	SA WALNUT ST	3910	514	1.0
364	315	AILEEN	4605	394	0.9
365	109	HIGHLAND	6375	199	0.9
366	285	KIRKLAND	3545	37	0.8
367	271	SANTA ANNA	3415	507	0.8
368	214	ALPINE 12KV	6820	720	0.8
369	338	TWILIGHT TRAIL	4285	1,328	0.7
370	3	SHAMROCK	1835	71	0.7
371	45	SA EMERSON ST	4860	417	0.7
372	181	AB WALNUT ST	3785	1,752	0.7
373	157	SA CONCHO	1715	292	0.6
374	387	COLLEGE HILLS	4835	312	0.6
375	5	CEDAR GAP (TEC)	5445	102	0.5
376	242	AB ELM CREEK	1810	1,376	0.4
377	258	SA SOUTH	3500	939	0.4
378	232	ABILENE PLANT	3175	281	0.3
379	164	AB OIL MILL	3895	292	0.3

Service Quality Report to the Public Utility Commission of Texas

AEP Texas North Company

2003 SAIDI Ranking	2002 SAIDI Ranking	Substation Identification	Feeder Identification	Number of Customers	2003 SAIDI Value
380	222	ABILENE PLANT	1910	735	0.3
381	37	AB MCMURRY	4350	1,086	0.2
382	363	AB EAST 12KV	5760	1,034	0.2
383	152	AB SHELTON ST	3435	320	0.2
384	369	AB ELM CREEK	1825	734	0.1
385	286	ROBY	2276	334	0.1
386	21	AB ELM CREEK	1820	33	0.0
387	new	AB ELMDALE	4085	18	0.0
388	191	AB WALNUT ST	3445	752	0.0
389	390	ABILENE PLANT	1740	174	0.0
390	53	ABILENE PLANT	1915	88	0.0
391	378	ASPERMONT	6640	89	0.0
392	110	BEST ATLANTIC	ATLB	23	0.0
393	new	BRYANTS RANCH	5104	10	0.0
394	251	CORINTH	2590	27	0.0
395	57	CROCKETT HEIGHTS	4668	85	0.0
396	392	CROSS PLAINS	5130	58	0.0
397	63	GRAYBACK	3320	28	0.0
398	328	HASKELL 12KV	5240	53	0.0
399	70	PAULANN	6285	63	0.0
400	402	WEINERT	3363	132	0.0

Service Quality Report to the Public Utility Commission of Texas

AEP Texas North Company

INTERRUPTION CAUSES

Provide the percentage of interruptions attributable to each cause.

2003 Reporting Year

Causes of Forced Interruptions	Percentage
Weather (Including Lightning)	43.27%
Vegetation	10.52%
Animals and Birds	14.08%
People (Including cars and farm equip)	2.68%
Utility-owned Equipment	18.28%
Other	3.98%
Unknown	7.19%